

MINUTES  
of the  
Thirty-seventh Annual Session  
of the  
**Surry Missionary Baptist  
Association**



Held with  
**Holly Springs Baptist Church**  
Mount Airy, N. C.

Thursday and Friday, July 27 and 28, 1939



The next session will be held with the Indian Grove  
Baptist Church on Thursday and Friday  
after the fourth Sunday in September, 1940

Preacher: Delmer D. Hodges

## Standing Committees

Program Committee: O. E. Ward; W. E. Woodruff; Eph Whisenhunt.

Foreign Missions: Mrs. C. R. Merritt

Home Missions: L. F. Walker

State Missions: Lonnie Flemmings

Christian Education: Mrs. N. J. Martin

Mills Home: Mrs. Frank Tolar

Baptist Hospital: Mrs. J. S. Belton

Old Ministers Relief: R. W. Hovis

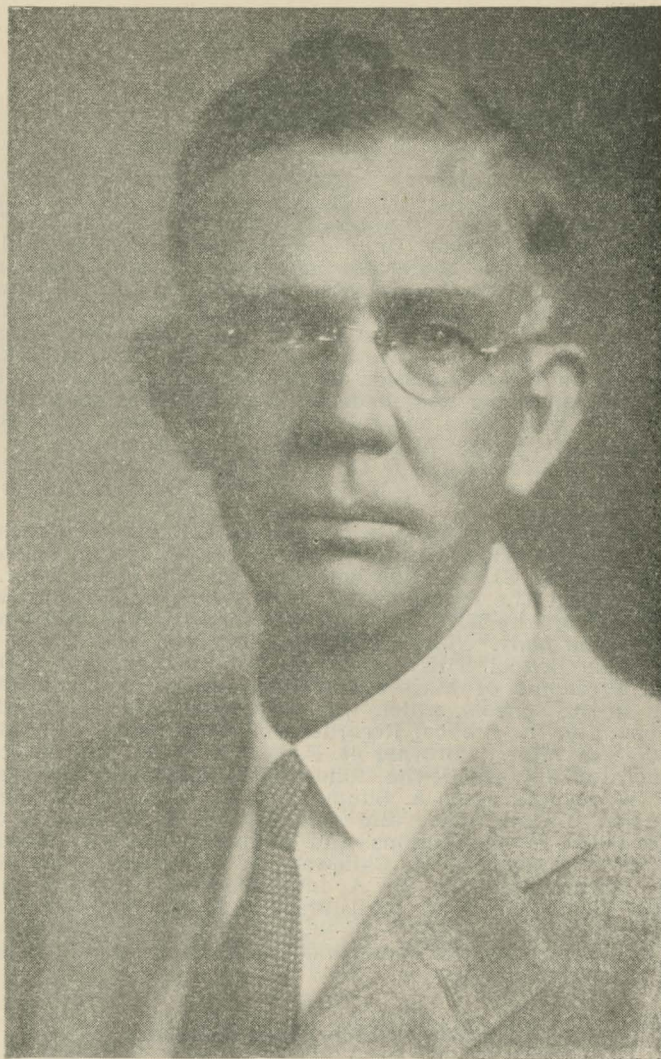
Temperance and Public Morals: E. C. James

B. T. U.: A. L. Hiatt

Sunday Schools: H. M. Finch

Executive Committee: R. W. Key; C. A. Simmons; J. T. Threate;  
A. V. West and J. H. Hall

Historical Commission: C. H. Haynes, Chmn; Luther Byrd, Sec'y;  
C. A. Simmons, Asst. Sec'y; J. E. Barker; F. T. Llewellyn; W. L. Reece;  
C. C. Hutchens; I. W. Reece; W. E. Woodruff; Claude Harris; J. H. Hall.



These minutes of the 37th annual session of the Surry Baptist Association are dedicated to the late Dr. J. Thomas Smith, of Westfield, whose death last spring brought to an end a life of outstanding service to the Master and his fellowmen. A lifelong Baptist, a veteran physician and minister, he healed both the physical and spiritual ills of his people.

## PROCEEDINGS

Holly Springs Baptist Church

Mount Airy, N. C.

Thursday Morning, July 27, 1939

The thirty-seventh annual session of the Surry Missionary Baptist Association met at 9:30 with the Holly Springs Baptist Church. The song used in opening was: "Standing on the Promises of God". The opening prayer was led by Dr. Hoyt Blackwell, of Mars Hill, N. C. Brother A. V. West, the Moderator conducted the devotional and read his annual report, which was adopted and ordered printed in minutes.

Brother J. W. Chilton, pastor of the church in which we are meeting, welcomed the Association to his church. Brother Eph Whisenhunt led the prayer in behalf of Brother W. L. Reece, who is sick.

The program for this session of the Association was adopted and the roll call of churches was made with 45 churches answering. The Moderator then recognized the following visitors: Rev. W. A. Simmons from the state of Kansas; Miss Ellen Daniels of Salisbury; Mr. & Mrs. Grady Burges of Greensboro, N. C.; J. A. McCain, Winston-Salem, N. C. Rev. E. A. Long, Germanton, N. C. and Rev. Delmer Hodges a new minister and pastor.

The Moderator appointed a committee on new churches: Eph Whisenhunt, O. E. Ward and R. W. Key. J. W. Hylton delivered an address on Sunday Schools and will hand in the report later. Mrs. C. N. Myers read the report on W. M. U. Work which was adopted.

The report on the B. T. U. Work was read by A. L. Hiatt and was adopted by the body. Mrs. I. O. Wallace read the report on the Vacation Bible School. This report was adopted as read. Dr. Hoyt Blackwell, President of Mars Hill College, spoke to us on Christian Education in the Schools, which was very much enjoyed by all.

The report on the Biblical Recorder not being ready, C. A. Simmons will hand it in later. Brother R. F. Terrell spoke on the Recorder. The Moderator Appointed the following Committees: Entertainment, Pastor J. W. Hylton, John A. Simmons, S. M. Stone, C. N. Welch and C. W. Marion. Time, Place and Preacher: J. W. Hylton, W. O. Snow, Dr. M. Y. Allen. Resolutions and Memorials: O. E. Ward, T. S. Draughn, G. A. Tucker, J. W. Calloway, W. A. Gough, C. A. Simmons. Finance: John Llewellyn, D. A. Livengood, B. E. Edwards. To Revise the list of Ordained Ministers: C. A. Simmons, C. L. Harris, R. W. Key.

The annual sermon was postponed until after lunch. Benediction by T. S. Draughn.

### Thursday Afternoon Session

The Association opened with a song and a prayer by Rev. W. A. Simmons of the State of Kansas. The annual sermon was delivered by Rev. A. S. Hale, pastor of the First Baptist Church of Mount Airy. He used for his text John 12-21. This message was greatly enjoyed. S. F. Morton led the Association in prayer after which a collection was taken for Flippin Memorial Church amounting to \$12.01. H. C. Baughn read the report on State Missions and also spoke on this report which was adopted. O. E. Ward read the report on Home Missions and spoke to us on this report. This report was also adopted.

The report on Foreign Missions was read and spoken on by Mrs. Eph Whisenhunt and adopted. The report on Christian Education was read by Mrs. W. L. Reece and adopted. Brother M. O. Alexander spoke on the Cooperative Program as did also Brother R. W. Hovis.

Earl James conducted the 'Round Table' discussion of our work and opportunities as a whole. Moved to adjourn until morning, with a prayer by Brother McCain.

### Friday Morning Session

The Association opened the Friday Morning Session by singing: "At The Cross...", and with prayer by C. C. Hutchens. The devotional was conducted by Lonnie F. emming. Eph Whisenhunt, Chairman of the Committee on New Churches recommended that we accept Blue's Grove Baptist Church in full fellowship into the Surry Association. The Association accepted the church into the Association.

R. L. West discussed the retirement plan of Old Ministers. Brother McCain also spoke on this plan. The Clerk read the report on Old Ministers which was adopted. Mrs. J. S. Belton read the report on our Baptist Hospital and spoke on this report. Brother Smith Hagaman, Superintendent of the Hospital, spoke to us on the Hospital and its work.

The Association recognized a large number of visitors from the Pilot Mountain Association as well as A. C. Woodruff of Elkin Asso. Brother Granvill Gwynn from Virginia was recognized.

J. M. Hayes from Meredith College was recognized.

Dr. Jacob Gartenhaus brought us a great message on Jewish Work. Benediction for lunch was by W. A. Simmons.

### Friday Afternoon Session

The Association opened with a song service.

Dr. Leslie Campbell, President of Campbell College spoke on Christian Education. Mrs. F. G. Toler read the report on Mills Home, which was adopted. Brother I. G. Greer, Superintendent of Mills Home spoke to us on the Orphanage work and we all thoroughly enjoyed his message. Mrs. Paul Wagoner read the report on Baptist Training Union which was adopted. W. E. Woodruff read the report on Temperance and Public Morals. Miss Emma Cook read the report on Womans Missionary Union. Dr. Paul W. Green spoke about Home Life.

The election of officers for the coming year was next taken up and resulted as follows: Moderator, A. V. West; Vice-Moderator, Eph Whisenhunt; Clerk, J. H. Hall; Statistical Secretary, Claud Harris; Treasurer, J. W. Hylton.

The Association adjourned to meet with Indian Grove Baptist Church on Thursday after the fourth Sunday in September, 1940.

The closing prayer was by Brother McCain.

A. V. WEST, Moderator

J. H. HALL, Clerk

CLAUD HARRIS, Statistical Secretary

### Report on Sunday Schools

I feel that during the last twelve months that material progress has been made among the Sunday schools of the Surry Baptist Association, as many churches have added additional space to better accommodate the various classes in their Sunday Schools. There also seems to be a revival of interest on the part of Pastors, Superintendents, Teachers and others in connection with the activities in the county in promoting efficiency and loyalty.

I am glad to inform you, that the Surry Baptist Sunday School Association is increasing in attendance and interest as shown during its various monthly meetings with the different churches of the Association. And if properly supported this association appears to be filling a long standing need among our Sunday Schools and more especially with the rural schools.

Respectfully submitted,

J. W. Hylton

### Report on Denominational Literature

Since the Surry Association is a Denominational Organization we have chosen to name this report on Denominational Literature, rather than Religious Literature. Therefore, we will confine this report to our Denominational Literature, State and South wide. Religious books, quarterlies, and periodicals are distributed through book store at State Baptist Headquarters and through the organizations in the church, such as the Sunday schools, B. T. U. and others. Thousands of dollars are spent by the churches to distribute these periodicals, and the churches should see to it that these quarterlies are studied, and not distributed wastefully. Then there are W. M. U. periodicals published at the W. M. U. headquarters in Birmingham, such as the Royal Service, the Window, and other publications. The Foreign Mission Board is now published at Richmond, Va. a monthly publication The Commissions, which is having a steady increase in the number of subscriptions. Charity and Children, published by the Thomasville Orphanage, has a benevolent mission. Its purpose is to create sympathy and support of orphans, especially for those at Thomasville and Kennedy Home, near Kinston. But, The Biblical Recorder is a responsibility of our own convention and Association. It is owned by the denomination, and is dependent upon the cooperation of the churches of the State to maintain its circulation. We therefore, recommend that the churches of this Association follow the plan as outlined for them.

Respectfully submitted,  
C. A. Simmons

### Report on State Missions

For a hundred years the objective of State Missions has been to win the people of North Carolina to Christ and then to the fellowship which the churches provide. During more recent years, notably during the past quarter of a century, the training and development of these who come into the churches has become an additional function of State Missions, so that from small beginnings the State Mission task now includes many various activities. These we list and discuss briefly.

**Missionary Pastoral Assistance:** "To the poor the gospel is preached" in many needy and strategic places. Many of our strong churches are trophies of State Missions. Moreover, hundreds of churches formerly aided by the Board are now returning to the treasury for all purposes one hundred fold. The task is not finished, but merely begun. In many sections the majority of the pastors do not receive sufficient support from their churches to keep them fit for Kingdom service. Hence they must find work to do with their hands in order to support their families. The result is that about the only work they can do for their people is an occasional sermon. The visitation and the training of the membership are almost unknown in widely scattered areas. There is spiritual hunger which is not being supplied. The hungry sheep look up and are not fed, because the pastors are busy with this, that, and the other in an attempt to supply the physical needs of their families.

**Teaching and training:** In the early days attention was almost solely on evangelism. Now that our membership has grown so rapidly emphasis must be given to the training and development of the membership, without, however omitting evangelism. About 1900, State Missions began to assume a part of its enlarging task. Sunday school departments were established as a part of the general work. The workers connected with this department, as time would permit, went out to the churches in an effort to secure and train better teachers and to put into operation better methods of Sunday school administration. At a later period the B. Y. P. U.--known as the B. T. U.--was organized, emphasizing not so much the teaching but the training and development of the membership.

**Church Building:** All through the years, and even at the present time, churches in strategic centers are aided in building church houses.

**Indians:** The State Mission Board is responsible for giving the Gospel to the Indians in Robeson county. Rev. and Mrs. M. C. Lunsford have been working there for several years.

**Negroes:** The Baptist State Convention is now undertaking some cooperative work with the Negro State Convention. At one time it was necessary to provide white workers among the Negroes.

**Work among Students in the Colleges:** During the large part of the year young people from sixteen to twenty-five are removed from the home church to the institutions. At present State Missions is undertaking to provide a few whole or part time student secretaries in our educational centers.

**Hospitals and Sanatoriums:** State Missions is seeking to minister to those who are sick in body and soul in the following institution: Oteen Hospital; Western North Carolina Sanatorium at Black Mountain; the State Sanatorium and Samaritan near Aberdeen.

**General Missionaries:** M. O. Alexander and J. C. Pipes are doing a notable work in holding revivals, visiting general meetings, aiding churches in the formation of fields; and in answering all kinds of calls that come to them for assistance. Another man is greatly needed since these two can meet only a portion of the urgent calls which come to them.

Another State Mission opportunity which we have not yet undertaken is a ministry to prison population. Surely at the earliest opportunity this work should become a definite part of our State Mission Program.

Let us therefore maintain an aggressive program of State Missions. In so doing, we shall through our testimony both as individuals and as churches, save ourselves and win the people of the world.

Respectfully submitted,  
H. C. Baughn

### Report of Moderator

Some years ago when our country was in the midst of the most deplorable economic and financial depression in its history, our government passed an act in our National Congress, entitled the National Recovery Act. Plans and policies were set up with a view to financial and economic recovery.

For some years our Baptist leaders have been more and more concerned about moral and spiritual conditions existing in our midst.

This applies to our Southern, State, Associational and Church leaders. Seemingly a large percentage of our citizenship have forgotten God and left Him out of their transactions, plans and calculations. Christian people have not been sufficiently awake and aware of their spiritual degradation.

Family religion, family worship and family instructions in Bible truths and fundamentals for Christian life and living have been and are now to a large extent and often wholly neglected.

Masses of people in our Association and elsewhere apparently and in fact are repudiating our Churches by word and deed.

Too many empty pews in all our churches made possible largely because of neglect, indifference and refusal on the part of the large percentage of the members of our various churches. Churches should always be first in our thinking and acting daily.

No organization can compare to it. It is GOD MADE, all others are man made. There can be no substitute for it.

By far the greatest asset any community can have is a Church of Christ actively engaged in condemning sin and extolling righteousness, holding high the banner of Christ for in Christ and Christ only can salvation from sin and its penalties be found.

Churches of our denomination and others striving for the salvation of men and women, boys and girls, in life and character as well as the souls of us all, should receive our heartiest support and most fervent prayers.

Our people saved and unsaved, have fallen into ease and luxury that have led into worse sin.

This means that we are allying ourselves too much with the world and its sin. We have failed to keep our covenant with God and consequently have been losing power and influence over the people of the world. Our spiritual temperance as a people and as a denomination is far too low.

#### **INDEED WE NEED TO RECOVER OURSELVES SPIRITUALLY**

**Humility:** God calls for humility first. Thinking more highly of ourselves than we ought to think and trusting self to the exclusion of God is one of our besetting sins today. God delights in humility, for "Jehovah is nigh unto them that are of a broken heart, and saveth such as are of contrite spirit.

**Prayer:** Then God calls us to earnest, fervent prayer. The need of prayer is universal. No man can be what he ought to be and have the power he ought to have without prayer. The Christian Church had its origin in a revival of religion, and that revival was the result of ten days prayer meeting. All genuine revivals are born in prayer and we need never hope to have a spiritual recovery in our Churches and denomination until we see God earnestly and agonizingly in persistent prayer. Prayer is the channel through which blessings of God will come to us. There is no other way.

**Seek His Face:** But God says also that His people must seek his face. To seek the face of God and forsake our ways is the most necessary condition that confronts us. To meet God is the obligation of all who are interested in a plan of action that will raise this life to the lofty heights of divine approval. To seek His face is to seek His favor humbly through prayer.

**Repent:** And finally God calls on us to repent, for He bids that we turn from our wicked ways. But real repentance, I fear is almost lost with us. And yet Jesus says "Except we repent, we shall all likewise perish." He draws a fine line of demarcation between them that repent and them that do not. Repentance is accompanied with deep Godly sorrow and regret from sin. We should as it were pull it out of the heart, roots and all, and cast it from us with a determination never to indulge in it again. God cannot restore us to Himself and we can never experience a real revival of religion in our personal lives, churches, or denomination until we accept this plan for Spiritual Recovery and practice what is included therein. When we come into His presence with deepest reverence and humility, in prayer, seeking properly the favor of God, repenting of our sins we have His promise that He will hear and receive and forgive and restore. May we meet these conditions laid down by God Himself, and claim fulfillment of his promise.

**Needed-Greatly Needed--A Million Personal Soul-Winners:** These words were recently spoken by Dr. Scarborough of the Southern Baptist Convention. "If we had", says Dr. Scarborough, "A million consecrated soul-winners constantly at work, with Pentecostal praying, witnessing and power, all pastors could baptize each Sunday and between Sundays. As it is it takes twenty-three Baptists a whole year to lead one to Christ and membership in a Baptist church."

Suppose we had a million working constantly--faithfully--WHAT A MIGHTY RESULT. Pentecost would be repeated and perpetuated and a new day would sweep Christianity and the world. How are we to get them? Dr. Scarborough suggests some ways: Pray for them; plan for them; train them; call them out; urge out; lead them out; and go with them. This is largely the task of the preachers, but the task also of the mothers, Sunday school teachers, and all Christians. This is the major task of Christianity today.

Jesus is always trying to get his disciples to "look on the field". When He looked at the world field, Jesus saw men lost, scattered as sheep without a shepherd, despairing, defeated and dying. We should see the world through the eyes of Jesus. Present day population 2,012,000,000. Only 606,883,855 people are even nominal Christians. 1,405,116,145 who have never named the name of Christ. Every Christ-



ian needs to hear Jesus crying, and to see Jesus dying for the lost souls. Jesus seemed always to see sinners through His tears, and his blood. He beheld the city and wept over it. Luke 19:41. Not merely with a tear on His cheek, but with a sob in His soul. He was always conscious of being surrounded by lost men and women. For them He preached, prayed, served and sacrificed, suffered and died.

Evidences are unmistakably clear now that we are moving in the right direction. Southern Baptists were blessed in an unusual and unprecedented manner in 1938. Note the following inventory, viz: 24,932 churches-gain 88; 477,018 members-gain 174,583; 22,075 ordained ministers-gain 386; Baptisms in 1938-256,814-gain over 1937, 52,247-largest on record; 23,514 Sunday schools-gain 203; members 3,368,851-gain 157,144 second largest on record; 38,202 B. T. U.'s-gain 2,849; 805,945 members-gain 63,738-largest in history; 38,597 W. M. U. organization-gain 4,003; Contributions \$2,614,556-gain \$257,553; Gifts to local work \$29,466,838-gain \$257,553; Missions and benevolences, education \$5,798,529-gain \$96,379; Grand total \$35,256,340-gain \$2,999,653; Value of church property \$210,446,838-gain 3,778,425; North Carolina is a great state and growing splendidly each year. Baptist people are numerous. Practically 50% of all professing Christians in North Carolina are Baptists. God has blessed us wonderfully. We have a fine opportunity but a fearful responsibility. God continues to bless and we are moving forward. 2,491 churches-gain 23; members 489,272 baptisms 26,787-6,334 baptisms over 1937. Net gain all churches 17,728; 34 Indian churches-gain 3,133 members-baptisms 369, gain in baptisms over 1937 369; 2,453 Sunday schools-19 Mission Schools-members 412,111 gain 51 schools-26,846 members-greatest gain of any State in the South; 34 Indian schools with 2,947 members; Cooperative contributions \$675,601.46-gain \$36,333.51; local work \$2,802.42-gain \$184,528.92; Co-operative churches 2,218; 273 according to information did not cooperate-8 of these were in our own association; Per capita Southern Baptists all purposes \$7.46; Per capita North Carolina \$7.11; Surry Association \$5.81.

In 1933-34 our per capita contributions for all objects were \$2.83-1936-37-\$4.63; 1937-38-\$5.81. We have been making steady progress. I thank you most heartily for your interest, thus manifested.

Note however, that we are still \$1.30 under state average, and \$1.65 under Southern Baptist Average. We have gained \$2.98 per capita to all objects-more than doubled-from 1933-34 to 1937-38. This is a fine record for four years. I again say that I fully appreciate it.

Let us continue to move forward in all lines of endeavor for the expansion of God's Kingdom and the up-building of His churches. By all means we should place the salvation of souls first. But do not neglect or lose sight of by indifference or otherwise that we should all make a strong united effort in the matter of lifting our people to higher grounds in Christ.

Our Sunday school Association, less than two years of age, has been doing splendid work and making steady progress. Bro. Eph Whisenhunt is a wise, enthusiastic, constructive leader. Every pastor in our Association and all preachers who are not in the pastorate should endeavor to lead all sections in our Association and all teachers and workers of every kind, should strive also to aid in building up the wonderful work.

Vacation Bible Schools have been greatly increased this year under the progressive leadership of Mrs. I. O. Wallace of Mountain Park and also Miss Daniel of Salisbury.

I urge your hearty support of this very important work also and trust next year we shall have several workers with us in order that we may put on a school in every church in our Association.

I suggest-yes request, our entire Christian force in this Association shall place themselves on the altar of service and sacrifice next Associational year in a larger way and with greater determination and Christian enthusiasm than at any time in the history of our Association.

Respectfully submitted,  
A. V. West, Moderator

### Report on Daily Vacation Bible School

In a Vacation Bible School a teacher has the greatest opportunity to magnify Christ and to build character. Last year was the first time we had a Bible School work as an associational program. Five schools were reported and every one said that the Bible School had meant more to the lives of the children than any one program they had ever seen. Indeed, it is one of the greatest opportunities of a teacher to magnify Christ in his or her life.

This summer six schools have been held and ten more have dates definitely arranged if they can get them carried out as planned. Be sure to see the Bible School exhibit--see the pictures, handwork, books, and daily program.

Miss Ellen Daniels of Salisbury is here under the auspices of the Baptist Sunday School Board directing this work for the summer. You will hear her speak this afternoon during the conference period. Miss Mary Lee Earnest, a Meredith College graduate, and one of Mr. L. L. Morgan's approved workers will be with us August 6th to help with the Vacation Bible Schools. Her coming will enable us to have two schools a week and thus reach many more churches. These young ladies want to come and help any church in the association put on a school that would like to have them.

Christ has been magnified in the lives of the teachers before their pupils in every school held, and in numbers of them several of the children have accepted Christ as their Saviour and Lord and united with the church. The work is one of the most important that a church can have for only a week or ten days. The success of it depends on the teacher. In order that we may do our best in the remaining schools this summer I want to suggest several points we need to think about definitely if we are teachers.

1. Look at yourself:

Do I know Christ in a personal way so that I can point my pupils to Him? Am I willing to give my time to His work? Do I love boys and girls and will try to understand their limitations?

2. Keep your body fit and strong:

Do I get plenty of rest so as to be my best before my pupils? Will I see that the visiting worker has a home for the time she is with us where she can stay every night and be free to rest and work as she needs it? Will I pray for patience and wisdom to guide my children whom I teach?

3. Take a look at your pupil:

Do I know the spiritual condition of my pupils? What are my pupils' possibilities? How can I help my pupil in his home life? Do I know how to tactfully lead my pupil in his learning?

4. Study your Task:

Am I familiar with the books and materials used in my work? Will I furnish songs, games, refreshments, handwork materials and plan a well rounded program to fit the needs of my pupils? Will I promote the school before the date set so that there shall be no haphazard beginning?

5. Work toward an aim:

What kind of a pupil will he be when he finishes my Bible School? Will he be a stronger Christian, will he know Jesus more and love to serve Him? Have I cultivated an appreciation of home, Missions, the church, God's world, Citizenship, the flags of our country, the Bible and its teachings? Have I helped to make his world a better place in which to serve? Will he be a better leader tomorrow because of my leading?

If there are people here today who believe in boys and girls from 4 to 17 years of age and feel that they need Jesus as a Saviour and friend and really want to help them to find Him will you not see that preparation is made for the Vacation Bible School in your church? Will you select consecrated teachers to help and interest your boys and girls in this program. Jesus said, "If I be lifted up I will draw all men unto me." He wants you to build for Him by molding Christian

Character that he may be real to those you lift up to Him.

"A builder builded a temple,  
He wrought it with grace and skill,  
Pillars and groins and arches  
All fashioned to work his will.  
Men said as they saw its beauty,  
"It shall never know decay,  
Great is thy skill, O Builder!  
Thy fame shall live for aye."  
A teacher builded a temple,  
With loving and infinite care,  
Planning each arch with patience  
Laying each stone with prayer.  
None praised her unceasing efforts,  
None knew her wondrous plan,  
For the temple the teacher builded  
Was unseen by the eyes of man.  
Gone is the builder's temple,  
Crumbled into the dust,  
Low lies each stately pillard  
Food for consuming rust.  
But the temple the teacher builded,  
Will last while the ages roll,  
For the beautiful, unseen temple,  
Was a child's immortal soul.

Respectfully submitted,  
Mrs. I. O. Wallace.  
Associational Vacation Bible School Director

### Report on Temperance and Public Morals

It is noted that the general subject of this afternoon's discussion has as a keynote "The Church in its Ministry of teaching." It is most fitting, therefore, that the report on Temperance and Public Morals should come under this heading and stress both the timeliness and importance of education as the surest way of promoting temperance and of creating a wholesome environment for the growth of personal morals and social health.

For some years past the religious and moral forces of our country in our effort to combat the evils of strong drink, gambling and social sins, have put too much faith in legal remedies and law-enforcement groups. Alas, the failure and ultimate repeal of the prohibition amendment marked the burial place of many prohibitionist's hopes for a sober world. Since that time many a preacher and many a religious teacher have wondered about his tasks, disillusioned, discouraged, disconsolate. Many seem to feel now that the only contribution to the temperance cause possible is that of denunciation and the calling of hard names.

Nor can we shut our eyes to the fact that since repeal, drinking and intoxication have increased, that the very social atmosphere today over much of the land is such as to encourage drinking and condone excesses and refractions of the moral code. Gambling and the urge to gamble is more widespread than for many years. It is enough to cause one to cry from the housetops--to shout his denunciation at every individual or institution that encourages this sort of thing. And yet what will such a course accomplish?

Let us recall that for many years the temperance and moral forces of the United States carried on a systematic campaign designed on the one hand to educate youth to abstain from drink and on the other to co-operate with the W. C. T. U., the Non-Partisan League and other groups of outlaw liquor. Repeal not only killed off militant opposition groups but paralyzed for the most part our campaign of moral suasion and education. Fortunate for us in North Carolina the United Dry Forces, headed up by a dry lawyer in Raleigh, is doing a noble service in the temperance cause and it should have the moral and

financial support of all good citizens. Last week this organization carried the wet and dry issue to practically every church and community in Buncombe county and succeeded in defeating the wets in their effort to vote legalized liquor stores. The outcome of that contest has put heart into all our temperance forces. Right here in Surry county its effects will be such as to encourage our law-enforcement officers in their recent but most commendable efforts to dry up many a wet spot.

After all may we recommend as the most lasting and effective way to fight the drink evil that of the educational rather than the militant approach. We strongly believe that if our pastors and Sunday school teachers; if our Christian parents in the homes would resolve to make it their business to instruct the youth of our land as to the perils and evils of strong drink; the folly of gambling and the certain shame and deterioration of character incident to social vice, in a very few years we would have created an atmosphere of moral wholesomeness and sobriety that would insulate society against these evils. And when we have done that religiously and faithfully for a few years we would find legislative groups most willing to enact laws to protect society. Our law-enforcement officers would be encouraged to apprehend offenders. Our judges, who now by fines, only license bootleggers, would inflict penalties that deter offenders. Let us not delude ourselves into the the belief that public officials are indifferent to the wishes of Christian groups. They only see our indifference, they see us asleep on the job and it is their business as they see it, to do what the clear cut majority indicates. So long as Christian people work at the job of character building, so long as their influence surcharges the social atmosphere with spiritual lightning public officials dare not grow indifferent. The greatest insurance against social evils of all kinds is an active church membership that's really and trully working at their task of bringing the Kingdom of God into a perplexed world.

Respectfully submitted,  
W. E. Woodruff.

### B. T. U. Report

**WHY HAVE A BAPTIST TRAINING UNION?** We find the answer to this question in II Timothy 2:15: "Study to show thyself approved unto God, a workmen that needeth not to be ashamed, rightly dividing the Word of Truth." Also in I Thessalonians 4:11 we find, "And that ye study to be quiet, and to do your own business, and to try to work with your own hands, as we commaded you.

That is just the reason we should have a Baptist Training Union organization--to help the Christians (adults as well as young people) to train themselves for the greater and more useful service for our Lord and Master. We cannot do efficient work for Him in any organization of the church without first being trained and without studying and learning new methods of reaching unsaved people in our communities. Our church rolls are filled with strayed and lost members. Our standing numerically, is strong--our enlistment and efficiency is weak. The average church has given little consideration to the young Christian. Our Evangelism must go beyond the other baptistry. There must be more concern than about adding names to our church rolls.

The B. T. U. trains these young Christians in speaking for their Saviour. It trains them in Bible study, in prayer, in supporting the church with their money, in sending their money to the foreign fields, in regular attendance upon the church services.

The Training Union member's personality is strengthened because of the sympathetic Christian atmosphere with which he comes in contact from Sunday to Sunday.

If we are to have strong baptist churches, our constantly changing membership must be trained to serve and trained in our doctrines. If the spiritual life of the young Christian is to be guarded and protected, his social life must be promoted within the church family. The Training Union gives the best possible social contact.

The Training Union exists for the entire membership of the church. The most fertile field of enlightenment is with the new convert. He is interested and eager to learn. Regardless of age, if he is genuinely converted, his heart yearns to know and to do. The Training Union is answering the call of an inward experience of the young Christian.

To enlist new converts, first--we must create the place by proper organization. Second--we must enlist mature Christians for leadership in our training service. Third--we must organize to meet the needs of all ages of new converts. The work of enlisting them in the Training Union should be looked after with almost as much concern as their baptism. Go after them while the warmth of conversion stirs their souls. Teach them to walk in the right way before they are tempted by the enemy to walk in the wrong way. The strong trained Christian is the best evidence of the genuineness of Christianity.

No department of our churches has developed so rapidly or proved so effective in developing the members of our churches. The adults are coming to see the need of training. The whole family is being enlisted. The church is being filled for the evening worship. As we increase the rolls of the Training Union we decrease the roll of backsliders and the indifferent. The Training Union holds within its power to give to the church a trained, aggressive, loyal, working, intelligent membership. As we train our people we will increase our witness to the truth. We will enlarge the boundry of our service. We will raise standards of living and standards of giving. We will give a new meaning to church membership.

Matthew 9:37-38 "Then saith He unto His deciples, the harvest truly is plenteous, but the laborers are few. Pray ye therefore, the Lord of the harvest, that He will send forth laborers unto His harvest."

Truly the harvest is plenteous in our Surry Association. We have many souls who could be reached by the Training Union. Shall we go after them? Shall we train them in greater service for our Master? Or shall we leave them as babes in Christ? Shall we follow the verse, 2 Peter 3:18 "But grow in grace, and in the knowledge of our Lord and Saviour Jesus Christ-----".

May we ask that every person in the Association join us in asking God to send us more laborers to help us organize Baptist Training Unions in all our churches, thus having stronger Christians and stronger churches. Isaiah 6:8--"Also I heard the voice of the Lord, saying, Whom shall I send, and who will go for us? Then said I, Here am I, send me." Can we say that today? Are we willing to say "Lord, send me to teach people how to be better Christians? And let us pray for the Lord to call men to preach the Gospel or teach, or whatever it may be. He will, if we will only ask, ask and ye shall receive.

Respectfully submitted,  
A. L. Hiatt.

### Report on Religious Education

The right kind of education is the foundation of the morals of any people, that kind is christian education. Where the training of the mind in the various branches required in the standard of the schools and colleges of our country is entwined the principles of morality, which form the character of the individual throughout the whole fabric of the course of instruction.

Education of the individual without religious training oftimes results in the worst form of sin and crime.

It has been said, that an educated rascal is the most dangerous man in any community.

The standard of any country or nation never rises above the level of the morals of the people, hence the necessity for christian education is very evident.

While the great work the State is doing for educating our youth, is to be appreciated in a measure, but it does not attempt to give christian education; that is left to the denominational schools, and is

a challenge to every member of a Christian Church to amend where the State is deficient.

If we would have the morals of our young people what they should be, let us put forward our efforts to get them in Christians schools.

The Baptists of North Carolina are glad to say that the doors of their schools and colleges are open, and bid them come and partake of knowledge that prepares them for service through life.

From public record we observe that the morals of our people are retrograding, and have a tendency to demoralize rather than upbuild. Shall we continue the downward trend?

It behooves us as an organization to encourage our youth to attend Christian schools, where influence for good is put before them each day, and may we in our homes, our communities, our Sunday Schools, our State and our Southland, help them to remember the words of our Lord, in His Great Commission, "Teach them to observe all things even as He has commanded."

Respectfully submitted,

Mrs. W. L. Reece.

### Report of W. M. U.

The annual meeting of the Woman's Missionary Union of the Surry Association was held July 6th at Mount Carmel Church. Mrs. C. N. Myers, superintendent, presided over the morning session, the central theme being "The Challenge of a New Day." Interesting and challenging reports were given by associational officers and representatives from the active societies.

The address of the morning was made by B. K. Mason, superintendent of the Charlotte Division, who used as her subject, "Telling the Story."

An impressive memorial service for Mrs. Edna R. Harris was conducted by Mrs. E. C. James.

The afternoon session was devoted to the work of the young people of the association. Mrs. Robert Transou, Young People's leader, presided and presented a report on the year's work. An illustrated song, "World Children For Jesus," was presented by the Sunbeams of Mount Carmel Church under the direction of Mrs. Eph Whisenhunt. A talk on "The Challenge of the W. M. U. Training School" was given by Miss Estelle Cockerham.

After reports of committees the closing prayer was led by Mrs. W. A. Jackson. The 1940 meeting will be held at Elkin Valley Church.

Mrs. C. N. Myers, Supt.

### Report on Baptist Hospital

The Baptist Denomination owns and operates 20 hospitals in 14 Southern States. These have a total bed capacity of 3,000. About 100,000 patients were treated in these, last year.

Our own Baptist Hospital, located in Winston-Salem, received its first patients May 28, 1923. Since that date 44,635 patients have been treated (July 14, 1939). A little more than 4,000 were treated last year. This number will not be increased this year as we have gone the limit. A little more than one-third of these were service patients, that is, they paid little or nothing. About 90% of these came from outside of Winston-Salem.

It is always interesting to note the large number of mothers who have families of children at home. More than 1,000 of these last year were blessed to return to their more than 3,000 children.

The hospital treated last year about 100 preachers, missionaries and ministerial students. Almost all these were free service.

The hospital with its fine staff of 72 doctors and four internes rendered during last year \$196,177.00 of free service. We have 42 specialists on our free service staff.

The hospital has a staff of 82 nurses--51 are students in training. The Nurses Training School can accept only 16 in its September Class--these have already been selected from a little more than 500 applicants.

It is interesting to note that these patients come from almost every county in the state. A fair idea can be obtained any day by a check up of any of the large wards. A few days ago it was demonstrated that the seven patients in a ward were an average of 102 miles from home.

It is little less than a tragedy that during the past year the hospital has been compelled to turn away more than 2,000 patients for the lack of room. During the year, it is estimated that 1,000 patients in Winston-Salem, who could pay their bills, were turned away in order that the hospital might take those who could not pay a hospital bill.

Plans are going forward to immediately add 100 more bed space to the hospital, giving the hospital a bed capacity of 212. This will enable the hospital to treat 8,000 patients each year. This ought not to be a difficult task for a denomination comprising a membership of almost a half million--one-half the entire membership of all denominations of our state. For the expense of caring for these multitudes of sick who cannot pay, we must look largely to the Mother's Day offering and the free donations of the Hospital linen by the W. M. U. and other church organization.

Respectfully submitted,

### Report on Old Ministers Relief

We have heard a good deal about security in our generation and the distress which followed in the wake of the World war. Millions turned to dictators or to new systems of government which promised them security.

I wish that time and space for this report would permit a more detailed account, to such an extent that when read every layman would have as thorough an understanding of the Board and its work and benefits to the aged ministers and their families as the ministers themselves have. It may be that less than an average of one of every hundred laymen know scarcely anything of what some of our ministers have to go through and of the working of the Board. We can't take time to review the original plan of the work, but the new plan is the age security plan. The basis of this plan is four percent (4%) of the pastor's salary paid by the pas'or and four percent (4%) paid by the church, one percent (1%) by the Convention. Last year at this time about forty churches in a dozen states were participating in this new plan. Now there are more than one hundred and thirteen churches participating. Some say this is slow progress. The serious difficulty that has to be met is that the church is asked to join its minister, or pastor, in providing the cost. As there are some of us ministers who feel embarrassed in presenting this matter to our church, or churches, it might be well for each church in the Association to appoint a committee of several of their members who are aggressive enough to make a study of their various plans of this Board and confer with their minister, or pastor, of course. Then, with his consent, they could systematically enlighten the membership of their obligation to their minister, or pastor, along this line. The laymen of our church owe a great debt to our ministers.

Respectfully submitted,  
S. F. Morton

### Report on Foreign Missions

The past year has been a mammoth year in regards to gatherings held around the World. The International Missionary Council was held at Madras, India. Southern Baptists sent as their representative Dr. Chas. E. Maddy, Secretary of the Foreign Mission Board.

The Baptist World Alliance, Dr. Truett said will be the greatest Baptist meeting since Pentacost. It is the sixth World Congress. Sixty nations are represented and it is in session in Atlanta, Ga., now.

Foreign Mission week at Ridgecrest is the week following the World Alliance and on the program for the week are speakers from England, Hungary, Italy, Chile, Spain, Brazil, China and Rumania.

The Lottie Moon Christmas Offering is the major feature of Southern Baptists. Last year the amount given was more than fifty percent in excess of the goal. Already \$315,000.00 has come in and still the gifts continue. "The Lord loveth a cheerful giver." One hundred and twenty-five missionaries are being supported by the offering and many other very urgent kinds of work are being carried on. Every church should share in giving to the Lottie Moon Christmas Offering. This gift to the Christ Child, whose birthday we celebrate, should exceed all other combined gifts to family and friends. Every resident church member should contribute to missions.

Dr. George Sadler, once missionary to Africa is now newly appointed secretary to Europe, Africa and the Near East.

We now have 439 missionaries in sixteen countries. There are 1,774 churches, 1,053 of them are self supporting. Last year there were 16,207 new converts by baptism.

In Africa only five percent of the people are Christians. In China forty-five percent of the country is still untouched by Christianity. Out of the almost five million Chinese only two million are Church members. Seventy million Chinese are homeless, hungry, refugees, victims of war and destined to death. Three cents a day feeds a grown person or one dollar a month. Twenty cents will save the life of a child for a month. "In as much as ye have done it unto one of the least of these ye have done it unto me."

Revival fires are glowing around the world this year. What part do we have in them? Let us work, pray and give that His Kingdom may speedily come in the hearts of all mankind.

Respectfully submitted,  
Mrs. Eph Whisenhunt.

### Letter From Mr. Reece

To Bro. A. V. West, Moderator and the body of the Surry Baptist Association: As I am not with you in person and may not be during this session, on account of previous condition of my health, however, which is now considerably improved, I take this means of thanking your body to the fullest extent, for your kindness in inserting my photograph in the minutes of the last session of the Association, as a token of the appreciation of the services I rendered during the time I was Moderator.

Also I desire to express my sincere thanks to Bro. A. V. West, your present Moderator, for his gracious act in presenting the Association with a beautiful and useful gavel, in memory of the service I rendered as your former Moderator.

May the Lord bless your body in its efforts for the upbuilding of God's Kingdom on earth.

With love and respect,

W. L. Reece.

### Our Objectives

1. Every Church with a pastor.
2. A Revival in each Church each year.
3. Every church with a Sunday school enrollment at least as large as resident Church membership.
4. At least 50% of our Churches with B. T. U.
5. At least 50% of our churches with a W. M. U.
6. Vacation Bible School in every Church during 1940.
7. A one-week School for Christian workers-that-is-pastors, Sunday School Superintendents, teachers and all other workers in our Association during 1939-40 with an attendance if possible from every Church in our Association.



- 8. At least 50% of our Churches with a club for the Biblical Recorder.
- 9. 100% of our Sunday Schools making a monthly donation to the Mills Home.
- 10. At least 50% of our Sunday Schools with a club for the Charity and Children.
- 11. A.1 Churches making a contribution to our denominational work.  
O. E. Ward

**List of the Dead**

**Antioch:** Mrs E. B. Sparger; Mrs. W. J. Hodges; Mrs. Jess Gwyn; Dave Holder; Raymond Sparks. **Bean Shoals:** D. W. Coon; J. N. Owen; John Scott; Mrs. Eliza Chilton. **Copeland:** Mrs. Lucinda Butcher. **Elkin 1st:** Mrs. Ida Cockerham; Mrs. C. A. Reid. **Fancy Gap:** Russell Quesenberry; **Flat Rock:** Mrs Cephus Gravely; **Gum Orchard:** Harding Hayes; **Highland Park:** W. L. Davenport; I. S. Lineback; T. D. Overby. **Holly Springs:** Mrs. Bessie King; Mrs. Addie Linnens. **Mt. Carmel:** Mrs. Myrtle Cox; A. C. Beck; Rawley Davis. **Mt. Airy:** Howard Combs; J. R. Galloway; R. M. Smith; Fred Witt; Mrs. E. C. Estes; Mrs. J. M. Hill. **Mountain View:** Taylor Lowe. **Pinnacle View:** Mrs. Mary Jane Dezern. **Piney Grove:** J. Abram Eads; Mrs. Lillie Mae Simpson. **Rockyford:** Carl McMickle. **Siloam:** Gives 2. deaths but dont list them. **White Plains:** Mrs. Mary Easley; Shady Bowman. **Westfield:** Dr. J. T. Smith; Mrs. Delia Jessup, (Last Charter Member); Miss Flora Inman; Mrs. Virgie Cook; Mrs. Martha Simmons. **Woodville:** Mrs. Delphia East.

42 Listed, 2 not listed from Siloam.  
O. E. Ward, J. W. Calloway, T. S. Draughn, G. A. Gough.

**Donations to Baptist Orphanage**

An ioch -----	\$19 99	Mount Herman -----	0.00
Bannertown -----	32 83	Mountain Park -----	12.92
Bean Shoals -----	12.00	Mountain View -----	9.50
Calvery -----	11.10	Mount Zion -----	0.00
Central View -----	0.00	New Bethel -----	0.00
Cross Roads -----	3.00	New Hope -----	4.50
Copeland -----	4.75	New Lie -----	0.00
Dobson -----	20.13	Oak Grove -----	0.00
Elkin -----	375.80	Pinnacle View -----	4.30
Fair View -----	7.74	Piney Grove -----	7.65
Friendsnip -----	4.00	Pine Ridge -----	0.00
Fancy Gap -----	12.79	Rockford -----	21.41
Flat Rock -----	76.00	Rockyford -----	5.00
Frippin Memorial -----	20.86	Rock Hill -----	0.00
Gum Orchard -----	0.00	Salem -----	1.50
Hills Grove -----	2.00	Salem Fork -----	34.14
Highland Park -----	5.00	Simmon's Grove -----	16.00
Holly Springs -----	3.00	Siloam -----	10.00
Indian Grove -----	3.00	Sulphur Springs -----	18.35
Ivy Green -----	0.00	S.a.e Mountain -----	1.82
Little Mountain -----	0.00	Union Cross -----	6.19
Little Ricamond -----	0.00	Westfield -----	35.00
Ladonia -----	0.00	White Plains -----	35.04
Mount Airy, First -----	352.54	Woodville -----	6.17
Mount Carmel -----	43.50	<b>TOTAL -----</b>	<b>1,259.52</b>

**ARTICLES OF FAITH**

1. That we believe in one only true and living God, and that there are three persons in the Godhead: The Father; The Son; The Holy Ghost.
2. That we believe the Scriptures of the Old and New Testaments are the words of God, and the only rule of faith and order.
3. That we believe that salvation is by Grace, through faith in our Lord Jesus Christ.

4. That we believe baptism and the Lord's supper are ordinances instituted by Jesus Christ, to be practiced only by believers in their scriptural order.

5. That we believe baptism is the immersion of a believer. And only those who are thus baptized are in fellowship with the church of Christ, in faith and doctrine, and they only should take the Lord's Supper.

6. That we believe in the final perseverance of the saints.

7. That we believe in the resurrection of the dead, and a general judgment.

8. That we believe the punishment of the wicked will be everlasting and the joy and happiness of the righteous will be eternal.

9. That we believe no minister has the right to administer the ordinance of baptism only such as have been called and set apart by the imposition of hands by the presbytery.

10. That we believe in the doctrine of growth in grace and sanctification as set forth in the New Testament. But we do not believe that sinless perfection is attained by anyone in this life.

#### RULES OF ORDER

1. That the officers of the Association shall be elected at the close of each session instead of at the opening. That these officers serve through the following Associational year.

2. That each session of the Association shall be opened with religious exercise, conducted by such persons as the moderator may designate.

3. That at each daily session the names of the delegates shall be called and the proceedings of the previous session read before entering upon the regular business of the day.

4. That the members shall observe toward the officers and each other that courtesy that becomes Christians.

5. That any member wishing to speak shall arise and address the Moderator.

6. That no member shall speak more than twice on the same subject without permission of the Association.

7. That all motions made and seconded shall be definitely stated by the Moderator before discussion.

8. That no motion shall be withdrawn after discussion without the consent of the Association.

9. That when a motion is under discussion no motion or proposition shall be maintained or considered except to adjourn, which several motions shall have preference in the order in which they are stated.

10. That after a motion has been decided, any member having voted in the majority may move a consideration.

11. That all questions except as relate to the amendment of the Constitution shall be decided by the majority of the votes cast.

12. That the Association shall have the right to determine what subjects it will consider and the order of their consideration.

13. That no member shall absent himself from the session of the Association without the consent of the Moderator.

14. That these rules may be amended at any time during an annual session of this Association by a majority.

#### CONSTITUTIONS OF SURRY ASSOCIATION

Art. I This Association shall be denominated and known as the Surry Baptist Association.

Art. II That the object of this Association shall be the promotion of the Kingdom of Christ among men, and the accomplishing of this shall be in strict conformity to the New Testament.

Art. III This Association shall be composed of delegates chosen by the churches composing it (each church being entitled to four delegates and four alternates). The ministers of the Gospel who belong to churches connected with this body or are pastors of churches so connected shall be ex-officio members of this Association.

Art. IV That the Messengers from each church shall bear a letter certifying their appointment, giving an account of the conditions of the church, and account of the contributions for each purpose during the year.

Art. V That the officers of this Association shall be a Moderator, a Clerk and a Treasurer, who shall be chosen annually by ballot; a majority of the ballots cast shall be necessary to elect in each case, and they shall hold their offices until their successors are elected and are ready to assume the duties of their respective offices.

Art. VI That it shall be the duty of the Moderator to preside at and during the deliberations of the body, enforce and observe the Constitution, preserve decorum, appoint committees, decide all questions of order, and give the casting vote in case of a tie.

Art. VII that it shall be the duty of the Clerk to keep and record the proceedings of each meeting, superintend the printing and the distributions of the Minutes thereof among the churches composing the body.

Art. VIII That it shall be the duty of the Treasurer to receive all funds sent to this body by the churches for all purposes, or collected during the session of this Association, and distribute the same as ordered by the body. He shall make an annual report to this body of the sums received and from what source, and the manner of their distribution and to whom and for what purpose, and the conditions of the treasury.

Art. IX That the Association may annually appoint an executive board of five members which shall have charge of the Associational Missions and such other objects as may be entrusted to them by the Association. They shall have power to disburse all sums paid them by the Treasurer of the Association for objects under their charge, and to collect and disburse funds for their objects during intervals of the meeting of this body, and they shall make an annual report of all their doings to the Association, including a report of collections and expenditures.

Art. X That any church desiring to become a member of this Association shall present her petition at an annual meeting thereof through delegates appointed for that purpose, and if the Association shall decide to receive her, the Moderator shall extend the right hand of fellowship to the delegates.

Art. XI That the Association shall have power and it shall be its duty to withdraw fellowship from any church or churches that neglect or refuse to maintain gospel order.

Art. XII That the Association may invite visiting brethren to seats with the body, and to extend, to them all privileges except that of voting.

Art. XIII That this Association shall meet annually at such time and place as it selects.

Art. XIV That, by appointment of the Association, there shall be preached an introductory sermon, a missionary sermon if ordered by the body, and such other preaching as the Association may direct.

Art. XV That this constitution may be amended by any annual session of the Association by a vote of two-thirds of the delegates present.

Art. XVI That this Association will not retain a church who permits its members to manufacture or sell spirituous liquors.

### Treasurers Report

#### Minute Fund

1938—			
July 31	By amount from last year	-----	\$ 2.39
July 30	By W. L. Reece	-----	84.96
Aug. 17	Joe Hall, Mount Carmel Church	-----	1.00
Aug. 17	Paid Joe Hall, services as Clerk	-----	\$20.00
Aug. 23	Mount Airy First Church	-----	12.00
Sept. 9	Paid J. E. Cockerham, printing Minutes	-----	64.50
Sept. 9	Paid J. H. Hall, postage	-----	5.00
Sept. 9	Claud Harris	-----	2.20
May 9	Paid A. V. West, programs	-----	2.50
June 30	J. H. Hall, postage	-----	5.00
July 3	Balance on hand	-----	5.50
			<b>\$102.50</b>
			<b>\$102.50</b>

#### Aged Ministers

1938—			
July 31	Received from W. L. Reece	-----	\$1.69
Aug. 10	Sent to M. A. Huggins	-----	\$1.69

#### Cooperative Program

1938—			
Jan. 18	Cross Roads Church	-----	\$ .75
July 30	By W. L. Reece	-----	47.47
Sept. 10	Forwarded to M. A. Huggins	-----	\$48.22
July 31, 1939	F. T. Llewellyn, Treasurer		\$48.22

### Pastors of the Association

Antioch	-----	Lonnie Flemming
Bean Shoals	-----	E. C. Norman
Blue's Grove	-----	Dalmer D. Hodges
Bannertown	-----	S. F. Morton
Cross Roads	-----	J. W. Calloway
Central View	-----	George Burrus
Cope and	-----	L. W. Burrus
Calvary	-----	Richard Daye
Dobson	-----	Richard L. West
Elkin	-----	Eph Whisenhunt
Fancy Gap	-----	L. B. Murray
Friendship	-----	T. S. Draughn
Flippin Memorial	-----	Lonnie Flemming
Flat Rock	-----	O. E. Ward
Fairview	-----	J. W. Calloway
Gum Orchard	-----	J. W. Calloway
Highland Park	-----	J. F. Sellars
Hills Grove	-----	Lester Campbelle
Holly Springs	-----	J. W. Chilton
Ivy Green	-----	L. M. Cook
Indian Grove	-----	W. T. Crissman
Little Mountain	-----	G. A. Tucker
Ladonia	-----	George Burrus
Little Richmond	-----	
Mountain Park	-----	E. G. Jordan
Mount Herman	-----	L. W. Burrus
Mount Carmel	-----	Frank Weatherman
Mount Airy, First	-----	A. S. Hale
Mountain View	-----	S. F. Morton
Mount Zion	-----	J. W. Chilton
New Bethel	-----	J. H. Hall
New Hope	-----	C. W. Simmons
Oak Grove	-----	Lonnie Flemming
New Life	-----	W. F. Weatherman
Pinnacle View	-----	E. C. Norman
Pine Ridge	-----	L. M. Cook
Piney Grove	-----	G. A. Tucker

Rocky Ford	A. B. Hayes
Rock Hill	John Hinson
Rockford	D. G. Reece
Sulphur Springs	W. T. Crissman
Salem	W. T. Crissman
Salem Fork	E. G. Jordan
Siloam	T. S. Draughn
Simmons Grove	J. W. Chilton
Slate Mountain	G. A. Tucker
Union Cross	
White Plains	J. F. Sellars
Westfield	R. W. Hovis
Woodville	J. H. Hall

**Ministers Other Than Pastors**

W. H. Gough	Pinnacle, N. C.
Lawrence Phillips	Toast, N. C.
J. L. Powers	Elkin, N. C.
T. M. Chandler	Kernersville, N. C.
Gurne Holder	Mount Airy, N. C.
Curtis Leitwich	Galax, Va.
R. D. Fletcher	Mount Airy, N. C.
W. C. James	Mount Airy, N. C.
M. G. Hayes	Mt. Airy, N. C.
C. C. Hayes	Mt. Airy, N. C.
Claude Lawson	Lakeview, N. C.
T. G. Marion	Dobson, N. C.
A. M. Feltz	Mount Airy, N. C.
W. E. Woodruff	Mt. Airy, N. C.
C. L. Harris	Mount Airy, N. C.
B. M. Phillips	Ararat, N. C.
J. R. Wright	Mountain Park, N. C.
Matt Brooks	Dobson, N. C.
Odell Lawson	Ararat, N. C.
J. A. Tilley	Ronda, N. C.
Odell Adams	Siloam, N. C.
J. W. Culler	Ellerbe, N. C.
E. M. Culler	Mount Airy, N. C.
E. B. Draughan	Elkin, N. C.
C. C. Hutchens	Mount Airy, N. C., R. 4
H. R. Key	Mount Airy, N. C., R. 4
	C. A. Simmons, C. L. Harris, R. W. Key, Comm.

**REPORT ON TIME, PLACE AND PREACHER**

We the Committee on Time, Place and Preacher, recommend that our next session be held with the Indian Grove Baptist Church on Thursday and Friday after the fourth Sunday in September, 1940.

Preacher: De'mer D. Hodges.

M. Y. Allen, J. W. Hylton, W. O. Snow, Committee.

CHURCHES	City (T) Co. (C) Village (V)		When Constituted	PASTORS AND POST OFFICES														
				Days of Meeting	Members Rep't. Last Year	Baptisms	Letters	Statements	Restorations	Letters	Exclusions	Erasures	Deaths	Total Present Members	Weekly Prayer Meetings	Revivals Held	Observance of Lord's Supper	Families Receiving State Baptist Paper
Antioch	c	1858	Lonnie Flemming, Mt. Airy	1-3	210	5	5					1	5	214	n	2	1	3
Bannertown	v	1906	S. F. Morton, Winston Salem	1	155		3				2		156	n	1		2	
Bean Shoals	v	1867	E. C. Norman, East Bend	1	190	4						4	190	n		1		
Blue's Grove		1939	D. D. Hodges, Mt. Airy										18					
Calvary	v	1914	Richard Day, Elkin	1-3	190	29	4		3	2		67	157	n	2	1	10	
Central View	c	1910	Geo. Burrus, Rockford	1	63								63	n		1	2	
Cross Roads	c	1864	J. W. Calloway, State Road	1	40								40	y	1			
Copeland	c	1896	L. W. Burrus, Boonville	4	96							1	94	n		1		
Dobson	v	1877	R. L. West, Yadkinville	1-2	64	41	7			2			110	n		1	2	
Elkin First	t	1889	Eph Whisenhunt, Elkin	Ev'y	501	14	14	1		19		1	508	y	1	4	52	
Fair View	c	1912	J. W. Calloway, State Road	4	129	2	4			2			133	y	1			
Friendship	c	1895	T. S. Draughn, Crutchfield	4	115	12				1			126	n		1	1	
Fancy Gap	v	1929	L. B. Murry, State Road	3	99	22	5			1			121	y	2	1		
Flat Rock	v	1889	O. E. Ward, Mt. Airy	Ev'y	169	16	1		2			1	187	y	1	4	10	
Flippin Memorial	c	1937	Lonnie Flemming, Mt. Airy	2-4	23	12	3					1	37	y	1	1		
Gum Orchard	c	1865	J. W. Calloway, State Road	2	156					1			154	y	1	1		
Hills Grove	c	1905	Lester Campbell, Greensboro	2-4	122	3	1			5			120	n	2			
Highland Park	v	1927	J. F. Sellers, Mt. Airy	1-4	201	82	6	2		12			286	y	2			
Holly Springs	c	1900	J. W. Chilton, Mt. Airy	1	197	1	1	1		1			197	y	2	1		
Indian Grove	c	1895	W. T. Crissman, Siloam	2	112	3	2			1	2		114	n	1			
Ivy Green	c	1916	L. M. Cook, Mt. Airy	2	57	7			6	2			62	y	1			
Little Mountain	c	1928	G. A. Tucker, Pilot Mountain	4	82								82	n	1	1		
Little Richmond	c	1885																
Ladonia	c	1900	Geo. Burrus, Rockford	1	38		6						44	y	1	1		
Mount Airy First	t	1878	A. S. Hale, Mt. Airy	Ev'y	867	15	12			20		3	865	y	1	6	54	
Mount Carmel	v	1890	Frank Weatherman, Jonesville	2	160	14	2			6			167	n	1	1		
Mount Hermon	c		L. W. Burrus, Boonville	1	75	3	1			2			77	n	1	1	1	
Mountain Park	v	1912	E. G. Jordon, Elkin	1	121	3	7			6			126	n	1	1		
Mountain View	v	1895	S. F. Morton, Winston Salem	4	65		2					1	66	n	1			
Mount Zion	c	1913	J. W. Chilton, Mt. Airy	3	133	6	2						141	n		1		
New Bethel	c	1913	J. H. Hall, Mt. Airy	1	71	2				3			69	n	1	1		
New Hope	c		C. W. Simmons, Jonesville	4	80	6				4			82	n		1		
New Life	c	1920	W. F. Weatherman, Jonesville	1	69	1	1	1					72	n	1	1		
Oak Grove	c	1893	Lonnie Flemmings, Mt. Airy	2	50	4				2			52	n	1	1		
Pinnacle View	c	1930	E. C. Norman, East Bend	1	101	10		2		2			110	n	2	1		
Piney Grove	c	1898	G. A. Tucker, Pilot Mountain	3	167	46	7			20			178	y	2	1		
Pine Ridge	c	1921	L. M. Cook, Mt. Airy	3	58								58	n	1	1		
Rockford	v	1847	D. G. Reece, Jonesville	1-4	126	17	1			2			142	n	1	1		
Rocky Ford	c		A. B. Hayes, Hayes	1	56	2	9			1			65	n	1	1	2	
Rock Hill	c		John Hinson, Arlington	1-2	56	13		2		2		26	43	n	2			
Salem	c	1898	W. T. Crissman, Siloam	1	178	3	1						182	n	1	1		
Salem Fork	c		E. G. Jordon, Elkin	1	57	5							62	n	1	1	1	
Simmons Grove	c		J. W. Chilton, Mt. Airy	2	126	2	3			2			129	n	1	1	4	
Siloam	v	1900	T. S. Draughn, Crutchfield	1	128	5				2			129	n	1	1		
Sulphur Springs	c	1872	W. T. Crissman, Siloam	3	198	4							201	n	1	1		
Slate Mountain	c	1915	G. A. Tucker, Pilot Mtn.	2	116					4		34	78	y			1	
Union Cross	c			2	148	1	1			8			142	n	1	1		
Westfield	v	1879	R. W. Hovis, Westfield	1-3	327	3	1			5			321	n	1	2	2	
White Plains	v	1856	J. F. Sellers, Mt. Airy	2-4	147	47	14						201	y	2	12	2	
Woodville	c	1913	J. H. Hall, Mt. Airy	1	154	1				3			151	n	2	1	1	
TOTAL					6843	466	124	8	11	144	4	132	45	7122	50	61	150	

CHURCHES	SUPERINTENDENTS AND POST OFFICES	Cradle Roll, Under 3 Years	Beginners, 3-5 Years	Primaries, 6-8 Years	Juniors, 9-12 Years	Intermediates, 13-16 Years	Young People, 17-24 Years	Adults, 25 Years and Up	Extension Department	Gen. and Dept. Officers	Total Enrollment	Average Attendance	Baptism from Sunday School	Enrollment of Vac. School	Ave. Attendance Vac. School
Antioch	C. E. Tate, Mt. Airy	10	27	26		26	43			8	140	70	1		
Bannertown		2	16	23	39	32	28	24		10	174	91			
Bean Shoals	J. C. Trulove, Pinnacle		21		13		28	24		8	85	33	1		
Blue's Grove	S. C. Smith, Mt. Airy			9	9	10	22	22		6	78				
Calvary	C. L. Stone, Mt. Airy		40	36	102	36	53	49		10	326	118			
Central View	B. T. Hodges, Dobson		10		10		15			6	85	35			
Cross Roads	G. E. Isaacs, Dobson	4	2	4	10	3	11	16		5	50	25			
Copeland	Mrs. Clarice Wood, Dobson	7			17		24	12		6	60	40			
Dobson	J. T. Threatte, Dobson									11	132	100	40		
Elkin First	T. A. Leeper, Elkin	34	27	44	79	73	61	153	54	4	534	231	14		
Fair View	Marvin Wilmoth, Dobson	5	7	14	21	18	25	35		6	130	32	4		
Friendship	Dan Woodruff, Elkin	8	18		12		23	40		1	102	65	11		
Fancy Gap	C. R. Hayes, Mt. Airy	6	6	8	19	18	30	7		11	105	75	12		
Flat Rock	W. C. Baughn, Mt. Airy	27	43	34	67	45	37	57		8	310	244	16	121	81
Flippin Memorial	Sandy Stevens, Mt. Airy		10	16	17		22	15		2	82	45	2		
Gum Orchard	J. W. Mounce, Elkin		6	6	8	18	12	9			59	27			
Hills Grove					8		25	18		9	60	45			
Highland Park	Emery Nixon, Mt. Airy	28	27	33	50	38	40	108		15	339	162	52		
Holly Springs	E. E. Simmons, Mt. Airy	12	10	14	22	20	25	21		12	136	65			
Indian Grove	T. M. Kirkman, Mt. Airy		14		13	25		22			74	36			
Ivy Green	Ed Smith, Mt. Airy	14			20		17	22			73				
Little Mountain	C. S. Weldon, Mt. Airy		16		11	11	11	13			62				
Little Richmond															
Ladonia	A. J. Hayes, Mt. Airy	5	4	6	16	6	24	20			81	55			
Mount Airy First	H. M. Finch, Mt. Airy	36	44	92	131	85	41	183	105	6	723	332	13	135	120
Mount Carmel	J. S. Sprinkle, Mt. Airy		39		37	19	58	23		8	184	98	8	60	60
Mount Hermon	Mrs. Cockerhan, Crutchfield			9	10	20		23			62	38	3		
Mountain Park	Mrs. Bynum Golden, S. Road		18	15	19	11	39	47	3	3	144	58	3		
Mountain View	E. L. Schuyler, Lowgap		20	15		12	10	18		4	79	44			
Mount Zion	J. E. Tilley, Ararat										40	25			
New Bethel	Lum Golden, Lambsburg, Va.										100	55			
New Hope	Jim Lewellyn, Dobson	4	15			9	19	27		7	82	47	2		
New Life					12		15	10		5	42	25	1		
Oak Grove	Kelly Cockerham, Mt. Airy		6	8	8	6		16			44	35			
Pinnacle View	Gilmer Denny, Pinnacle		21		10	17	30	35		12	125	51	6		
Piney Grove			20	12	17	26		36		7	118	68			
Pine Ridge	R. C. Beamer, Mt. Airy		16		20	16		17		6	69	30			
Rockford	H. G. Hollyfield, Rockford	5	6	8	12	14	35	20			100	60	17		
Rocky Ford	Roy Thompson, Mtn. Park			15	15	12	10	15			52	37	1		
Rock Hill	C. E. Wall, Ararat	4	5	4	18		15	8		5	46				
Salem	Mary Jane Draughan, Dobson									7	58	25			
Salem Fork	Kizzy Martin, Elkin	8	5	3	11	10	10	8		5	60	32	4	17	
Simmons Grove	C. L. Armstrong, Mt. Airy		21		18	10	24	16		8	103	59	2	27	24
Siloam															
Sulphur Springs	R. W. Key, Mt. Airy	4	6	28	21	22	36	53		7	177	87	4		
Slate Mountain			12	8	16	13	17	12			78	46			
Union Cross	Floyd Stanley, Elkin									6	70				
Westfield	Luther Byrd, Westfield	5	5	24	35	32	35	50		20	206	98	3	62	55
White Plains	Woodrow Jones, Mt. Airy		26	12	25	12	65	32		9	174	75	18		
Woodville	Tom Cook, Mt. Airy		26		18	48		20		6	112	58	1		
<b>TOTAL</b>		<b>218</b>	<b>598</b>	<b>527</b>	<b>1042</b>	<b>745</b>	<b>1002</b>	<b>1414</b>	<b>162</b>	<b>277</b>	<b>6255</b>	<b>3147</b>	<b>239</b>	<b>422</b>	<b>340</b>

CHURCHES	Does Church Own Home	CHURCH CLERKS AND POST OFFICES	When Was it Built	Material Used	Persons Seated	Number of Rooms	Department	Assembly Rooms	Separate Class Rooms	Value of Church and Ground	Value of Pastor's Home	Value of Church Property	Indebtedness all Property	Insurance Carried
Antioch		Frank Beamer, Mt. Airy	1876	wood	400	1				3,600		3,600		
Bannertown		B. E. Edwards, Mt. Airy	1906	wood	300	1				2,000		2,000		
Bean Shoals		C. E. Gough, Pinnacle	1906	wood	400	1				5,000		5,000		
Blue's Grove		Roy Simmons, Mt. Airy		wood										1,000
Calvery		C. L. Stone, Toast	1914	wood	475	3				2,200		2,200		
Central View		B. T. Hodges, Dobson	1910	wood	300	1				1,000		1,000		700
Cross Roads		Maude Haymore, Dobson	1899	wood	400	1				2,600		2,600		
Copeland		J. R. Venable, Dobson	1896	wood	635	1				3,000		3,000		
Dobson		John G. Llewellyn, Dobson	1903	brick	400	1				5,000		5,000		3,000
Elkin First		Willie Gwyn, Elkin		brick	300	33	6			45,500	4,500	50,000	2,200	17,000
Fair View		C. C. White, Dobson	1912	wood	300	1				1,200		1,200		
Friendship		Andy Greenwood, Elkin	1929	brick	500	1				4,000		4,000	45	800
Fancy Gap		H. S. Segraves, Mt. Airy	1922	wood	300	1				2,000		2,000		
Flat Rock		R. H. Loftis, Mt. Airy	1905	stone	250	12	11			10,000		10,000	4,000	4,000
Flippin Memorial		D. A. Livengood, Mt. Airy	1937	wood	200	1				800		825	10	
Gum Orchard		L. W. Isaacs, Rusk	1865	wood	400	1				1,500		1,500		
Hills Grove		Roscoe Hill, Pilot Mountain	1905	wood	400	1				1,500		1,500		
Highland Park		Emery Nixon, Mt. Airy	1938	brick	400	8	1	7		3,000		3,000	16	
Holly Springs		John A. Simmons, Mt. Airy	1900	wood	500	3		10		2,500		2,650		1,500
Indian Grove		T. M. Kirkman, Mt. Airy	1895	wood	200	1								
Ivy Green		Ed Smith, Mt. Airy	1916	wood	300	1				1,000		1,000	100	
Little Mountain		Mrs. B. E. Atkins, Mt. Airy	1926	wood	600	1								
Little Richmond				wood										
Ladonia		Geo. Hayes, Mt. Airy	1911	wood	500	1				1,000		1,000	100	
Mount Airy First		T. F. Butner, Mt. Airy	1907	stone	400	43	7			60,000	10,000	70,000	1,000	46,775
Mount Carmel		J. L. Sprinkle, Mt. Airy	1894	wood	300	5				2,200		2,200		1,000
Mount Hermon		T. W. Cockerham, Crutchfield	1916	wood	300	1				1,000		1,000		
Mountain Park		Claude Harris, State Road	1912	wood	300	4	4	3		2,350		2,500		1,000
Mountain View		C. F. Carson, Lowgap		wood	250	1				700		700		
Mount Zion		S. F. Watson, Ararat	1913	wood	400	1				800		1,000		
New Bethel		Rueben. McCraw, Mt. Airy	1913	wood	250	1				900		900		
New Hope		W. H. Stone, Dobson	1915	wood	400	1				1,200		1,200		
New Life		Mittie Isaacs, Dobson	1920	wood	300	1				1,000		1,000		
Oak Grove		N. E. Boyles, Mt. Airy	1898	wood	200	1				1,000		1,000		
Pinnacle View		Mrs. J. S. Fulk, Pinnacle	1937	wood	350	1				1,800		1,800		
Piney Grove		Jesse F. Woodruff, Mt. Airy	1898	wood	500	1				800		800		
Pine Ridge		W. R. Hall, Mt. Airy	1921	wood	300	1				1,000		1,000		
Rockford		H. G. Holyfield, Rockford	1916	wood	700	2				4,000		5,000		
Rocky Ford		Paul E. Burch, Mtn. Park		wood	200	3	1	2		1,000		1,500		
Rock Hill		L. E. Moore, Mt. Airy	1915	wood	150	1				200		200		
Salem		Johnie Collins, Dobson	1928	wood	400	1				1,500		1,500		
Salem Fork		Buck White, Elkin	1907	wood	300	1				1,000		1,050		
Simmons Grove		Mrs. Ruby Cook, Mt. Airy		wood	400	1		5		1,600		1,700	112	300
Siloam		W. O. Snow, Dobson	1900	wood	300	1				1,000		1,000		
Sulphur Springs		Louise Hiatt, Pilot Mtn.	1910	wood	450	1				900		900		
Slate Mountain		Otis Davis, Mt. Airy	1915	wood	250	1				500		500		
Union Cross		William Draughn, Elkin		wood						1,500		1,500		
Westfield		L. P. Pell, Pilot Mtn.	1929	brick	500	5	4	4		15,000		15,000		10,000
White Plains		R. E. York, Mt. Airy	1876	wood	300	1				1,200		1,400		
Woodville		Bessie Tilley, Mt. Airy	1913	wood	500	1	1	1		1,000		1,100		
TOTAL					17460	158	35	32	193,550	14,500	210,525	7,583	83,050	



CHURCHES	REGULAR TREASURERS AND POST OFFICES	REGULAR TREASURERS AND POST OFFICES											TOTAL
		Pastors Salary	Other Salaries	Ministerial Help & Supply	Building and Repairs	Church Debt & Interest	Incidentals	Literature	Help Given Local Poor	For Printing Minutes	Other Objects	Pledged to Co-op Program	
Antioch		235.87	2.00	105.85	72.29		45.91	36.56	4.00	1.00	50.53	75.00	554.01
Bannertown	B. E. Edwards, Mt. Airy	250.10	27.50				88.00	47.23			25.10	50.00	440.43
Bean Shoals	R. P. Gough, Pinnacle	150.00		41.81			28.81	22.07		2.00	17.10		261.79
Blue's Grove													
Calvery	L. H. Stone, Toast	266.50		186.99	227.33		24.68	58.10					763.52
Central View	B. T. Hodges, Dobson	50.00		12.00				6.00		2.00			70.00
Cross Roads	Mrs. Elizia Haymore, Dobson	29.50		13.50	50.00		10.22	3.97		1.50		10.00	108.69
Copeland	J. R. Venable, Dobson	75.62		19.15			5.00	15.63		2.00			117.40
Dobson	Mrs. D. T. Sparger, Dobson	360.00		90.00			70.60	50.00		5.00			575.60
Elkin First	L. F. Walker, Elkin	2400.00	207.50	349.00	1015.56	1121.00	691.90	399.71	33.80	5.00	872.91	1750.00	7096.38
Fair View	C. C. White, Dobson	53.80		10.00			20.00	12.20		1.00			97.00
Friendship	J. T. Ring, Elkin	177.90		34.05		45.00	143.92	29.93	10.10	2.20	6.00		449.10
Fancy Gap	B. M. Culliman, Mt. Airy	151.16		55.45			40.88	40.78	40.00	1.04	116.00		445.27
Flat Rock	A. L. Hiatt, Mt. Airy	1560.00		50.00	62.50	299.60	182.63	150.00	75.45	4.00	165.12		2549.30
Flippin Memorial		63.00		30.00	100.00			22.97		1.00		25.00	216.97
Gum Orchard	L. W. Isacs, Rusk	28.39		30.25			2.75	12.88		1.50			75.77
Hills Grove		90.85		52.50			5.95	19.62		1.00	61.00		232.02
Highland Park	Elmo Renegan, Mt. Airy	173.38		21.83	511.81		35.32	65.94	21.00	3.00	22.15		854.43
Holly Springs	Roy Stone, Mt. Airy	107.44		37.00	152.51		148.26	49.97	4.00	2.00		50.00	502.18
Indian Grove	T. M. Kirkman, Mt. Airy	100.00			525.35		2.25	5.95				15.00	633.55
Ivy Green		59.86					15.25	9.16		2.00			86.27
Little Mountain	B. E. Adkins, Ararat	80.00		53.00				6.00		1.00		12.00	140.00
Little Richmond													
Ladonia	E. M. Amburn, Mt. Airy	60.00					10.00	7.71		1.05		10.00	78.76
Mount Airy First	R. R. Jackson, Mt. Airy	3600.00	1625.00	410.00	3937.56	211.38	1464.39	418.50	45.63	12.00	660.22	3500.00	10585.18
Mount Carmel	B. D. Reece, Mt. Airy	122.00		26.00	4.54		65.44	50.09	29.95	3.00	31.72	50.00	332.74
Mount Hermon	J. W. Cockerham, Crutchfield	50.00		9.50	19.00		47.00	7.00		1.50			134.00
Mountain Park	Mrs. R. H. Nixon, Mtn. Park	136.24		35.50	6.50		48.32	66.24	6.50	2.85	27.74	50.00	329.85
Mountain View	Mrs. J. B. Thompson, Low Gap	189.00		60.00			15.00	30.00		2.00			296.00
Mount Zion													
New Bethel	Rubin McCraw	70.26								1.50			71.76
New Hope	W. H. Stone, Dobson				140.00		9.60	10.01		2.50	74.49		236.60
New Life		39.04		19.20				10.00		2.00			70.24
Oak Grove	N. E. Boyles, Mt. Airy	155.63		17.02			12.00	6.00		1.00	12.60		204.25
Pinnacle View	Miss Ruth Fulk, Pinnacle	69.20		13.00		100.00	10.00	22.64		2.00			216.84
Piney Grove	S. C. Smith, Mt. Airy	130.14					22.32		5.00				157.46
Pine Ridge	R. C. Beamer, Mt. Airy	35.00		12.40	36.38		9.60	10.00	5.00				108.38
Rockford	H. G. Holyfield, Rockford	150.00		40.00	28.76		38.10	21.97	2.00	2.02		20.00	283.05
Rocky Ford		125.00		30.00			10.00	30.00				10.00	195.00
Rock Hill	Maggie Buelin, Ararat	25.50											25.00
Salem	W. B. Edmonds, Dobson	60.00											60.00
Salem Fork		84.80					9.35	14.25		2.60	45.00		156.00
Simmons Grove	Mrs. Ruby Cook, Mt. Airy	50.00		20.00	14.00	165.45	29.54	28.59		1.50			309.08
Siloam	Howard Hardy, Siloam	100.00		52.00			13.92			2.00			167.92
Sulphur Springs	J. F. Redman, Mt. Airy	100.40		33.63	178.07		25.00	26.19		2.00			365.29
Slate Mountain		71.04		10.10	23.80			14.00		2.00	3.00		25.00
Union Cross	Gomery Dobbin, E'kin	72.00		20.00	50.00		30.00	19.42		3.37	17.50		210.29
Westfield	Mrs. J. T. Smith, Westfield	322.50		94.00			178.93	40.87		3.00	51.91		691.21
White Plains	R. E. York, Mt. Airy	402.30		129.31	21.50		34.35	43.75		3.00			634.21
Woodville	Tom Cook, Mt. Airy	136.82		42.21			14.00	10.48	8.00	2.00	10.00	25.00	223.51
TOTAL		18645.94	1862.00	2249.23	7150.96	1952.43	3686.87	1974.70	285.63	93.13	2270.09	5652.00	32410.30

CHURCHES	REGULAR TREASURERS AND POST OFFICES											
		To Co-op. Program	Associational Missions	State Missions	Home Missions	Foreign Missions	Christian Education	Orphanage	Hospitals	Other Special Gifts	Total Given to Missions etc.	Grand Total
Antioch		15.60		1.42				36.78	13.00		66.80	620.81
Bannertown	B. E. Edwards, Mt. Airy	7.50	12.00		15.00	15.00		52.48	16.27		118.25	558.68
Bean Shoals	R. P. Gough, Pinnacle	5.45						12.10	7.33		24.78	286.57
Blue's Grove								4.34	2.19		6.53	6.53
Calvery	L. H. Stone, Toast	5.37						34.40	7.40	11.74	50.89	795.43
Central View	B. T. Hodges, Dobson							2.00			2.00	72.00
Cross Roads	Mrs. Elizia Haymore, Dobson	1.50						3.00			4.50	113.19
Copeland	J. R. Venable, Dobson	5.00						2.75	1.60		9.35	126.75
Dobson	Mrs. D. T. Sparger, Dobson	4.00						27.75	15.00		46.75	622.35
Elkin First	L. F. Walker, Elkin	1344.41		21.39	50.11	81.91	51.93	341.52	86.75	191.00	2186.15	9288.53
Fair View	C. C. White, Dobson							11.93	6.57		18.50	115.50
Friendship	J. T. Ring, Elkin	5.00						107.00	15.05	50.00	177.05	626.15
Fancy Gap	B. M. Culliman, Mt. Airy	29.69						42.00	21.00		92.69	537.96
Flat Rock	A. L. Hiatt, Mt. Airy	47.00		12.00		20.00		77.50	30.00		186.50	2735.80
Flippin Memorial		20.00						24.44	9.20	10.00	64.24	281.21
Gum Orchard	L. W. Isacs, Rusk											75.77
Hills Grove		1.00						2.00	1.00		4.00	236.02
Highland Park	Elmo Renegan, Mt. Airy								17.69	40.55	58.24	912.67
Holly Springs	Roy Stone, Mt. Airy	16.85		2.00		4.75		5.00	10.46		40.06	542.24
Indian Grove	T. M. Kirkman, Mt. Airy								4.25		4.25	637.80
Ivy Green						2.05		2.05	7.82		11.92	98.19
Little Mountain	B. E. Adkins, Ararat											140.00
Little Richmond												
Ladonia	E. M. Amburn, Mt. Airy					1.00		1.00	1.45		3.45	82.21
Mount Airy First	R. R. Jackson, Mt. Airy	3583.97		24.69	31.07			402.81	68.35	375.10	4455.81	15,040.99
Mount Carmel	B. D. Reece, Mt. Airy	47.35		7.04	1.60	8.15		89.88	16.00		169.97	502.71
Mount Hermon	J. W. Cockerham, Crutchfield	4.87							3.00	8.00	15.87	149.87
Mountain Park	Mrs. R. H. Nixon, Mtn. Park	2.00		7.00	1.60	4.25		31.17	6.58		52.60	382.45
Mountain View	Mrs. J. B. Thompson, Low Gap							5.00	9.50		14.50	310.15
Mount Zion											2.50	74.26
New Bethel	Rubin McCraw					2.50						
New Hope	W. H. Stone, Dobson							3.64	2.00		5.64	242.24
New Life												70.24
Oak Grove	N. E. Boyles, Mt. Airy							17.25	11.06		28.31	232.56
Pinnacle View	Miss Ruth Fulk, Pinnacle							4.17	1.84		6.02	222.85
Piney Grove	S. C. Smith, Mt. Airy							2.68	5.00		7.68	165.14
Pine Ridge	R. C. Beamer, Mt. Airy								1.44		1.44	109.82
Rockford	H. G. Holyfield, Rockford	20.00						25.00	2.80		47.80	330.85
Rocky Ford								30.00	5.00		35.00	230.00
Rock Hill	Maggie Buelin, Ararat											25.00
Salem	W. B. Edmonds, Dobson											60.00
Salem Fork		23.89						19.28	1.26		44.48	200.43
Simmons Grove	Mrs. Ruby Cook, Mt. Airy			5.98				16.00	6.85		28.83	337.91
Siloam	Howard Hardy, Siloam	20.00						10.00			30.00	197.92
Sulphur Springs	J. F. Redman, Mt. Airy			2.80				17.33	4.76	24.79	49.68	414.97
Slate Mountain								12.91	5.85		18.76	142.78
Union Cross	Gomery Dobbin, Elkin							8.85			8.85	219.14
Westfield	Mrs. J. T. Smith, Westfield	44.00				30.50		35.00	20.00		129.50	820.71
White Plains	R. E. York, Mt. Airy							47.11	8.11	2.00	57.22	691.43
Woodville	Tom Cook, Mt. Airy	2.25		2.00				9.17	3.00	6.00	22.42	245.93
<b>TOTAL</b>		<b>5256.70</b>	<b>12.00</b>	<b>86.32</b>	<b>99.38</b>	<b>170.11</b>	<b>51.93</b>	<b>1577.29</b>	<b>456.43</b>	<b>719.18</b>	<b>8312.28</b>	<b>41132.71</b>