

A Celebration of Life

Earline W. Parmon

*Emmanuel Baptist Church
1075 Shalimar Drive
Winston-Salem, NC*

**Reverend Dr. John Mendez, Pastor
Pastor Paul Lowe - Officiating**

Obituary

The Honorable Earline W. Parmon was born in Buffalo, NY to the late James and Margaret Cathcart. She was preceded in death by her loving husband of 47 years, Albert Parmon, her brother, Danny Ross Cathcart, her sister, Katrina Reid and her great-grandson, Cortland Harper Simmons. She was educated in the Forsyth County Public School System. She went on to graduate from Winston-Salem State University and proudly served in the U.S. Army Reserves before beginning her political career. She was a founding member of Exodus Baptist Church where she was ordained in August 2003. There, she served as an Associate Minister under the leadership of Pastor Johnny Stowe and currently Pastor Alvin Carlisle.

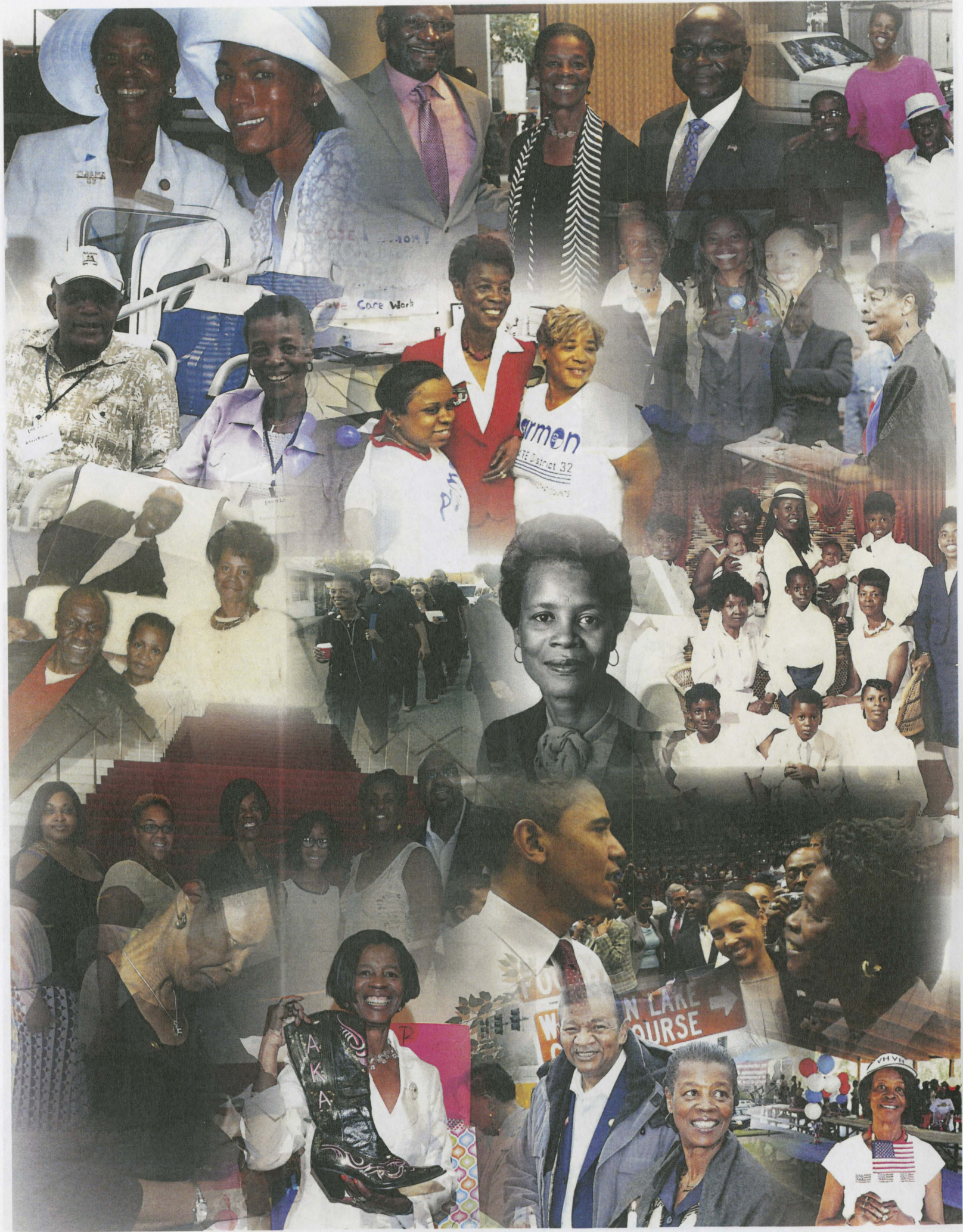
She leaves to cherish her memories, five children, Elaine King, Grady Parmon, Tracy Ingram, Angela Milton (Charles), and Morticia Killian (Kelvin); nine grandchildren, Shannon, Charla, Malachi, Lyndell Jr, Shalonda, LaSonya, KaTrina, Caylah, DeBrian and Pierre and; 14 great-grandchildren; one brother James White, Sr (Joanne), three sisters Gwendolyn Cathcart, Deborah Burnett, and Linda Simmons, all of Buffalo, NY; two uncles, Richard White of Charlotte, NC and James Hairston of Winston-Salem; a devoted and loving niece Alethea Barbour (Tim); a host of nieces, nephews and other relatives; seven godchildren; Tonya McDaniel, Tanya Wiley-Brown, Jemmise Bowen, Shawna Williams, Velma Thomas, Everette Witherspoon, and James "Jimmie" Bowen III.

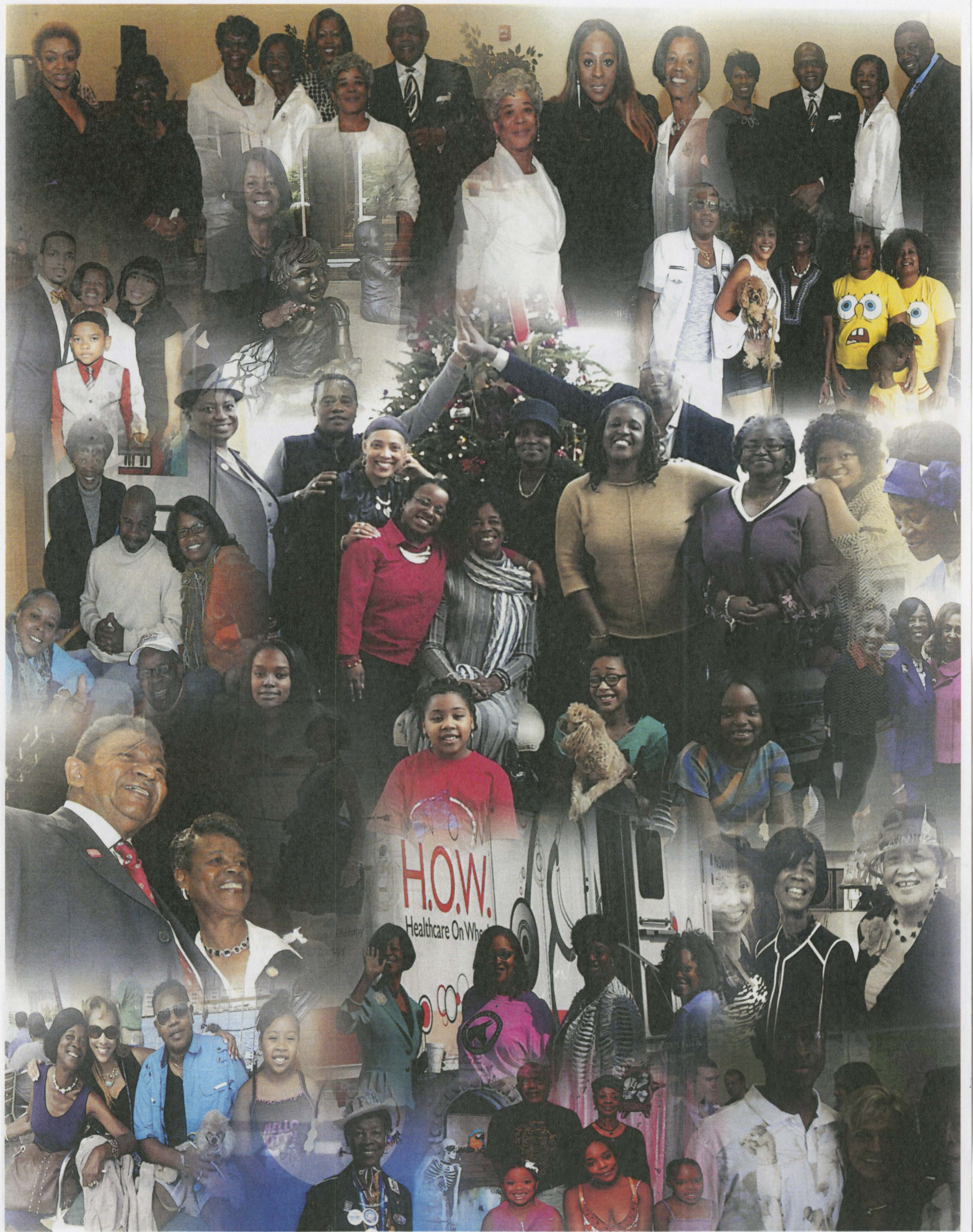
She also leaves to cherish her memories four sister-friends Congresswoman Alma Adams, Marie Roseboro, Representative Evelyn Terry and Doris Harrell. Earline shared her political experiences with a few trailblazers, Forsyth County Commissioner Walter Marshall; Susan Frye, Clerk of Court, the late Patrick Hairston; the late Velma Hopkins; the late Mazie Woodruff; Larry Womble, former State Representative, Representative Beverly Earle; Annie Mobley, former State Representative; Reverend Dr. John Mendez and Martha Wood, former Mayor of Winston-Salem.

Senator Parmon's public life was filled with many accomplishments, accolades, victories, etc. She was affiliated and held memberships with many various organizations, far too many to list. We have chosen just a few to share with you; no organization more important than another, she put her heart and soul into every one of them:

Alumni of Winston-Salem State University
Honorary Doctorate from Winston-Salem State University
Former NC Senator District 32
NC State House Representative 2002-2012
Forsyth County Commissioner for 12 years
First African-American Senator for Forsyth County
First African-American Woman elected as Chairman of Forsyth County Democratic Party
Founder and Director of LIFT Academy and Charter School 1982-2001
National Organization of Black Elected Legislative Women
Active member of Phi Omega Chapter of Alpha Kappa Alpha Sorority, Inc.
Top Ladies of Distinction

Senator Parmon loved the Word of God and strived to live by it day-to-day. Her life scripture was Proverbs 3:4-6. When thoughts of her comes to your mind, read this passage and allow it to encourage you.





Order of Service

Processional

*Selection.....Exodus United Baptist Church
Praise Team*

*Reading of Old Testament Scripture.....Bishop Todd Fulton
Mount Moriah Outreach Center*

*Reading of New Testament Scripture.....Elder Lamonte Williams
Diggs Memorial Church*

*Prayer of Consolation.....Reverend Dwight Hash, Sr.
Bethlehem Missionary Baptist Church*

*Special Tribute.....US Congresswoman Alma Adams
NC 12th Congressional District*

*Special Presentation.....Mayor Allen Joines
City of Winston Salem*

*Selection.....Exodus United Baptist Church
Praise Team*

*Resolutions.....Mr. Jerry Gilmore, Sr.— Community
Sis. Wanda Morrison — Church*

*Acknowledgements/Reflections.....Senator Dan Blue
(2 - 3 minutes) Senate Minority Leader
Reverend Garland Pierce
NC State Representative*

*Former Representative Annie Mobley — NC House 5th District
Elaine Riddick— Eugenics Survivor
Linda Garrou— Former NC Senator 32nd District
Reverend Dr. John Mendez*

*Family Tributes..... Morticia Parmon-Killian— Daughter
Shalonda Ingram —Granddaughter
Quintin Bracey— Nephew*

Selection..... Sis. LeJuene Thompson

*Eulogy.....Pastor Alvin Carlisle
Exodus United Baptist Church*

Benediction

Recessional

****Interment - Evergreen Cemetery****

2124 New Walkertown Rd. Winston-Salem, NC 27101
Repass will be held at Emmanuel Baptist Church

Pall Bearers

Nephews

Honorary Pall Bearers

*Deacons & Male Chorus
Exodus United Baptist Church*

Flower Bearers

Nieces

Honorary Flower Bearers

*Missionary & Women's Fellowship
Exodus United Baptist Church*

"Don't Quit"

*When things go wrong, as they sometimes will, When the road you're trudging seems all uphill,
When the funds are low and the debts are high, And you want to smile, but you have to sigh,
When care is pressing you down a bit - Rest if you must, but don't you quit.*

*Life is queer with its twists and turns, As every one of us sometimes learns,
And many a fellow turns about When he might have won had he stuck it out.
Don't give up though the pace seems slow - You may succeed with another blow.*

*Often the goal is nearer than it seems to a faint and faltering man;
Often the struggler has given up when he might have captured the victor's cup;
And he learned too late when the night came down, How close he was to the golden crown.*

*Success is failure turned inside out - The silver tint in the clouds of doubt,
And you never can tell how close you are, It might be near when it seems afar;
So stick to the fight when you're hardest hit -
It's when things seem worst that you must not quit.*

Acknowledgements

The Parmon Family would like to express our sincere appreciation to all who exhibited acts of kindness during our time of bereavement. The prayers, cards, food and fellowship will never be forgotten. We extend our gratitude to all the members of Emmanuel Baptist Church and Exodus Baptist Church for your assistance and thoughtfulness during this very difficult time. May God continue to bless each and every one of you.

Novant Health Medical Center

*Funeral Arrangements Entrusted To
Gilmore's Funeral Home*