



DAK 111K 1052

ELKIN HIGH SCHOOL LIBRARY

NANCY GAMBILL
Photography Editor

NEIL MULLIS
Business Manager

MARGARET CLEARY
Circulation Manager

JOHN ATWELL
Advertising Manager

EDNA DILLON
Editor-in-Chief



THE ELK 1952

PUBLISHED BY THE STUDENTS
OF
ELKIN HIGH SCHOOL
ELKIN, NORTH CAROLINA



FOREWORD

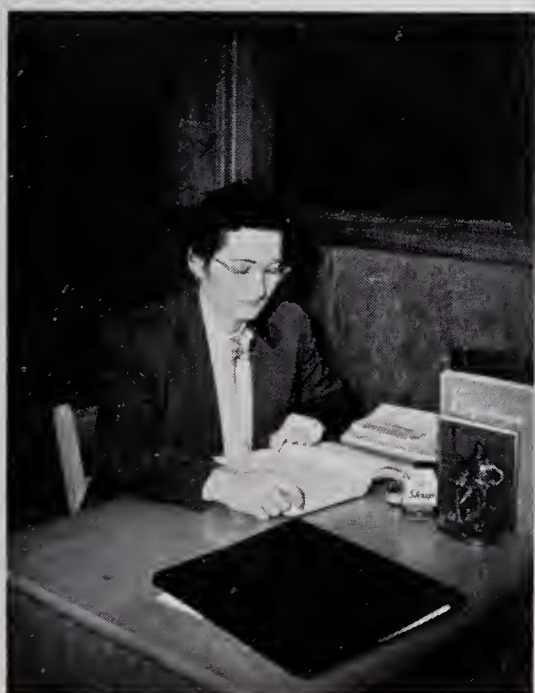
It has been our desire and purpose to portray for you the leading personalities and the highlights of this eventful year. It is our sincere wish that in years to come you may sit with this book of memories and be proud of the role you have played in this vital chapter of the history and progress of our school.

TO

Mrs. Adrian Nixon



WE DEDICATE



With grateful hearts, we, the Senior Class of 1952, dedicate this annual to Mrs. Adrian Nixon. We wish to express our sincere appreciation for the faithful guidance, inspiration, and loyal support of a willing adviser and true friend.

A
D
M
I
N
I
S
T
R
A
T
I
O
N



MR. N. H. CARPENTER, A.B., M.A.
Superintendent
Lenoir Rhyne College, Duke University
University of North Carolina



MR. F. C. SCHIEBOUT, A.B., M.A.
Principal
Calvin College, Columbia University



MRS. EVON LOVETT
Secretary

FACULTY

Miss Emma Cooke
A.B., Mathematics, English. Duke University, Berea.

Mr. Jim Hayworth
A.B., M.E., Physical Education, Guidance, Sociology. University of North Carolina.

Miss Mary Holland
A.B., Home Economics. University of South Carolina; Columbia College; Woman's College, University of North Carolina.

Mr. Jesse G. Hollingsworth
History. University of North Carolina, University of Texas.

Miss Jewell Kelly
B.S., Physical Education. Woman's College, University of North Carolina.

Mrs. Adrian Nixon
B.S., Secretarial Administration. Woman's College, University of North Carolina.

Mr. Theodore A. Orr, Jr.
B.S., Music. High Point College.

Mrs. Mae Bryant Pardue
B.S., English, History, Physical Education. Appalachian State Teachers College.

Mr. W. R. Richardson
B.S., Science, Social Studies. Appalachian State Teachers College.

Mrs. H. J. Royall
B.S., English, History, French. Appalachian State Teachers College.

Miss Eva Steelman
B.S., English, Spanish, Library Science. Appalachian State Teachers College.

Mr. Joseph T. Watts
B.S., English, Social Studies. Appalachian State Teachers College.

Miss Ethel Whitley
A.B., Mathematics. Woman's College, University of North Carolina.

Mr. Robert Yarborough
A.B., Physical Education, Sociology. Guilford College.

Mr. R. B. Young
A.B., Mathematics and Shop. Duke University.





BOARD OF EDUCATION

MR. HUBERT PARKER.....*Vice-Chairman*


MR. N. H. CARPENTER.....*Secretary*

MR. R. W. HARRIS.....*Chairman*

MR. GARLAND JOHNSON.....*Treasurer*

MR. E. H. HOLBROOK

MR. BRADY WOODRUFF



Elkin High School
Class of 1951



OFFICERS

Johnny Hunter *President*
Zetta Lou Freeman *Secretary*
Sam W. Marshall *Treasurer*
Edna Dillon *Vice-President*

SENIOR CLASS

MOTTO

"Not for ourselves, but for all."

COLORS

Lavender and White

FLOWER

Lily of the Valley

MASCOTS

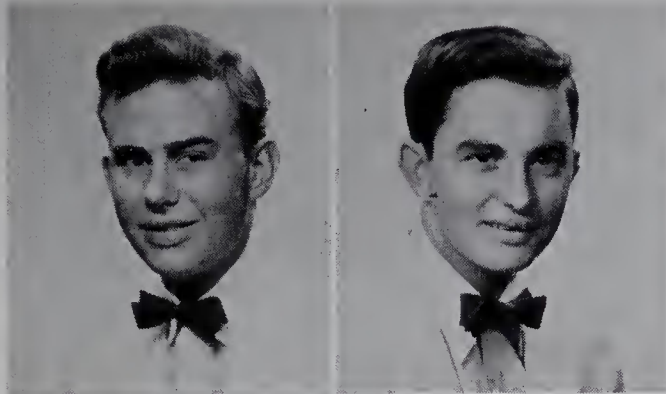
Daphne Aldridge
Ronnie Holbrook



SENIORS

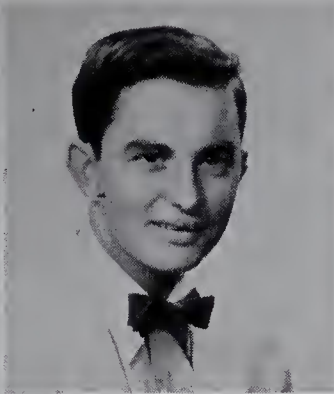
John Atwell

Dependable John, for athletics he
will strive,
Maybe some day he'll learn how
to drive.



Bill Barnette

A boy like Bill is hard to find;
His personality and ability will
always shine.



Anna Mae Beulin

Anna Mae, who works at the
State,
Is very original and up-to-date.

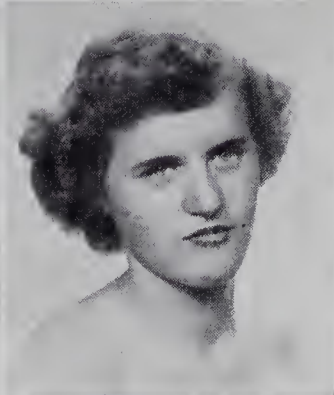


Alda Blevins

Tall, dark, and very sweet,
A pair of eyes that you can't beat.

Bonnie Sue Bowman

Capable, studious, and very sweet,
She blows a trumpet that's really
neat.

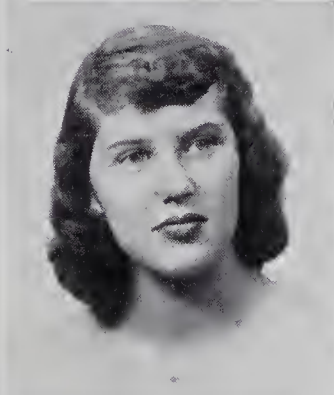
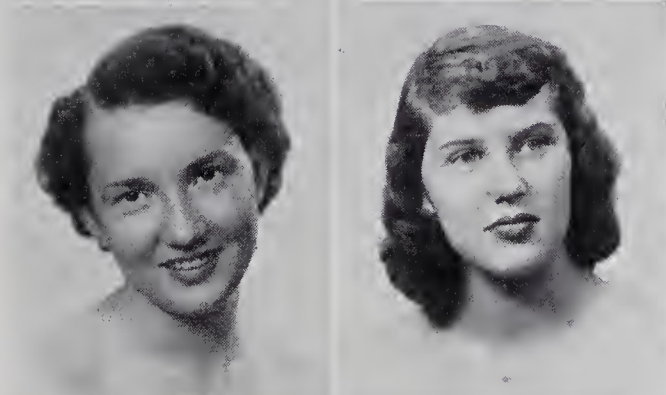


Honor Lucille Bright

Smiling, sweet, and very demure,
A friend of whom you're always
sure.

Peggy Brooks

Peggy is our only nurse;
From this work may she fill her
purse.



Anne Carter

Her voice is her outstanding trait,
And as a friend, she's really great.

David J. Causey

He's the strong and silent type,
Always busy, never a gripe.

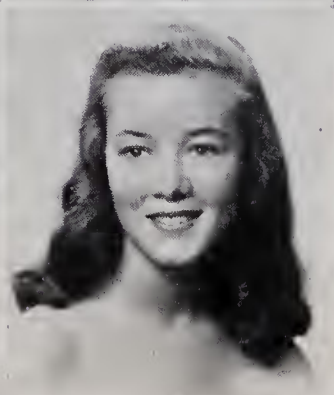
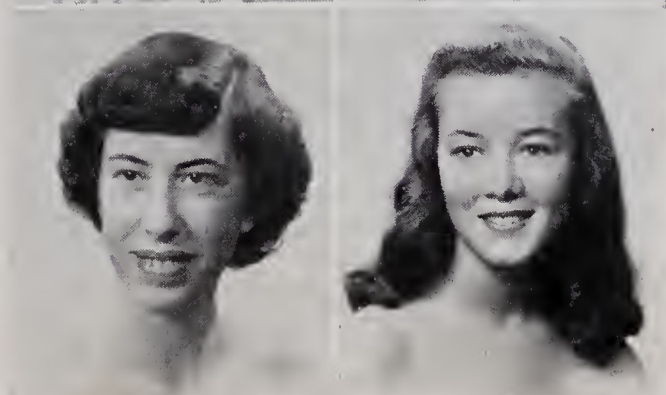


Mary Sue Chipman

The center on our football team,
She's very neat and on the beam.

Margaret Cleary

On alto she is very strong;
Her dignity and manners will
linger long.



Ruthie Click

The cutest girl in our class,
A small, sweet, and friendly lass.

SENIORS

Rex Cockerham

Always ready to laugh at jokes,
He's got a Ford that never chokes.

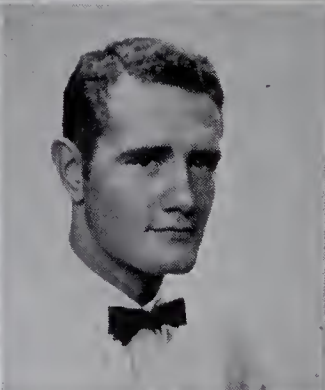


Frankie Cooper

Her friendly ways we must
mention,
And to Bill goes her attention.

Jackie Keith Cooper

Jackie is a wonderful guy,
Always happy, but a little shy.



Robert Creed

The only boy in our class who's
married,
His friends are many, his interests
varied.

Edna White Dillon

She's the editor of this book;
At none but Louis will she look.

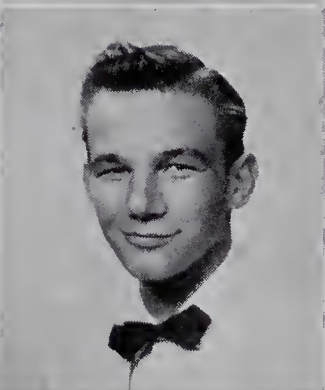
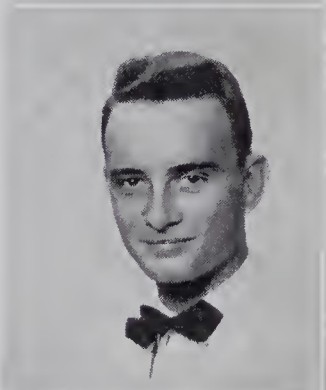


Della Sabrilla Dobbins

Smart, dependable, full of vim,
Sabbrilla is engaged to Jim.

Robert Jett Driver, Jr.

His nickname is "Lefty," his by
word "O, Yes";
We know he'll be a great success.

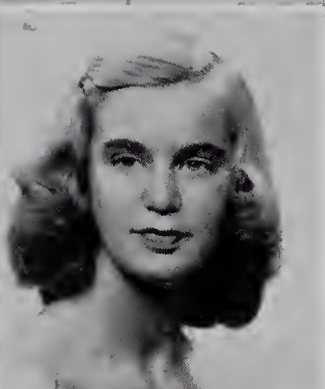


Billy O'Neil Francis

"Heisel" Francis, watch him go,
He's a boy you're glad to know.

Zetta Lou Freeman

She is cute, her eyes are dark,
And for Eldon, there's a spark.



Nancy Carroll Gambill

She is this year's football queen;
Some of her jokes should go on
screen.

Bertie Mae Gentry

Smart, serious, and very sincere,
She will forever to us be dear.



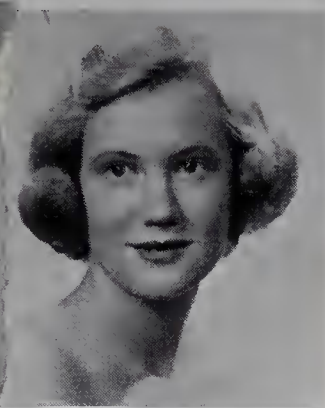
Carolyn Gentry

In her studies she is smart;
Her friendship with us will never
part.

SENIORS

Thomas Daniel Stanley

Tommy, who has a Henry J.,
Is admired for his friendly way.

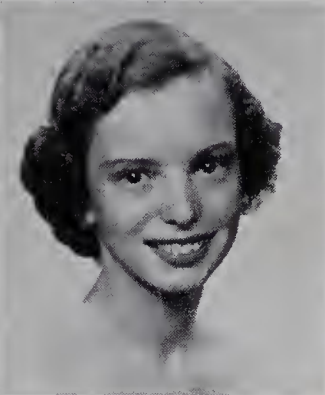
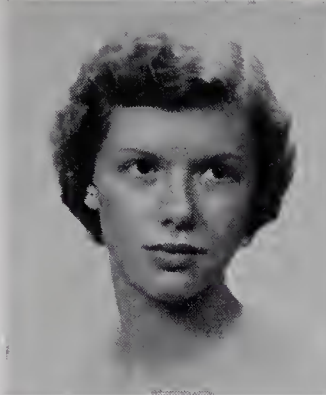


Dixie Graham

All her help she'll gladly loan;
To her friends, "no" was never
known.

Pat Graham

Popular, witty and an athletic
gem,
She's a good leader with a lot of
vim.

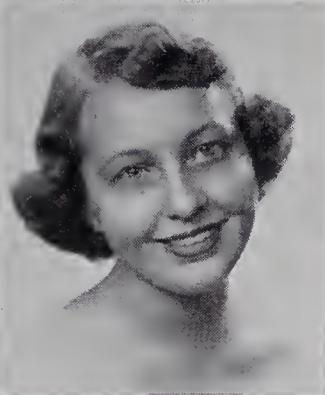
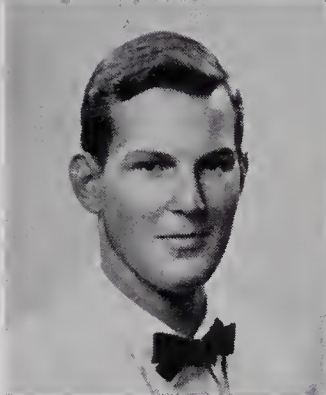


Linda Sue Guyer

She is president of the F.H.A.
And always has a friendly "hey."

John A. Hampton

His help he will gladly lend;
John is everybody's friend.



Norma Lee Hanks

Always kind to everyone,
When with her, you'll have some
fun.

Edwin F. Harris, Jr.

Very intelligent and popular too,
He's forever thinking up some-
thing new.

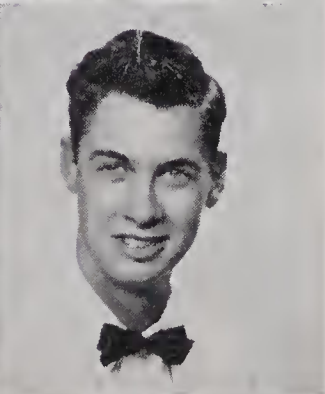
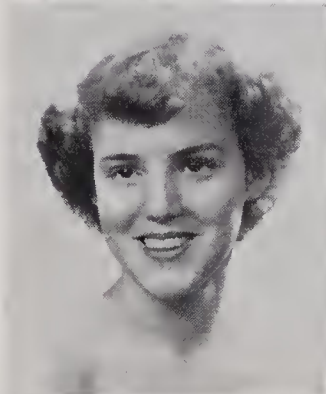


Elizabeth Ann Harris

Her fine qualities we all admire;
Our love for her will never tire.

Vetreal Hinson

Vetreal is a friendly girl,
And soon she will be married to
Earl.



Fred Holcomb

He has never been known to do
any harm;
Mr. Hollingsworth can stand
under his arm.

Johnny Hunter

If you like to listen to him,
Just turn the dial to WIFM.



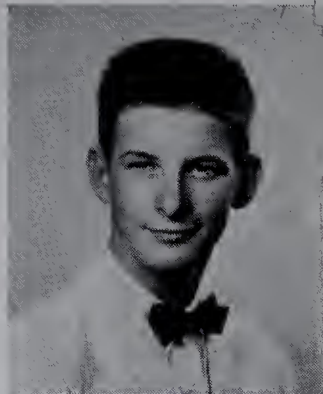
Gwen King

Very frank and easy to please,
When in a crowd, she's at ease.

SENIORS

George Lee McCoin

George grew up like a weed;
For more friends he has no need.

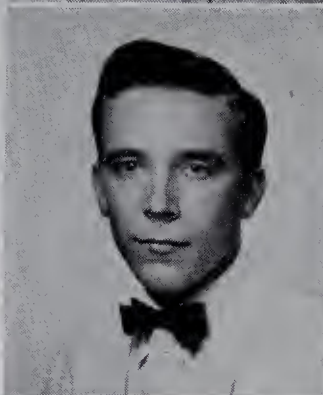


Frankie Cooper

Her friendly ways we must
mention,
And to Bill goes her attention.

Sam W. Marshall

The fastest walker we have seen,
And in politics he's very keen.

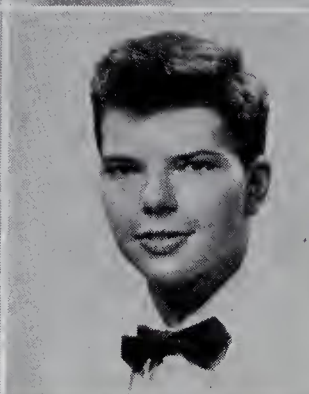
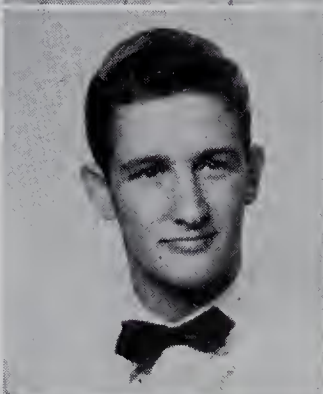


Vera Genevieve Money

A pleasing and sweet personality,
To this her friends will all agree.

Neil Mullis

He just moved here from
Tennessee,
But he's as friendly as can be.

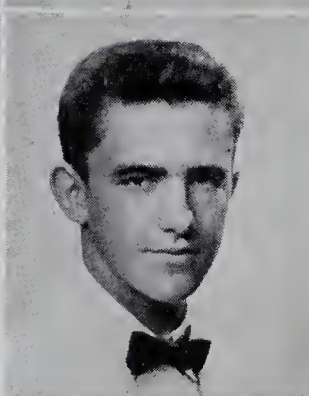


Charles Louis Neaves

Louis is the president of E.H.S.,
And will always stand out among
the best.

Ann Lee Osborne

A little timid but sweet just the
same,
She will make for herself a name.

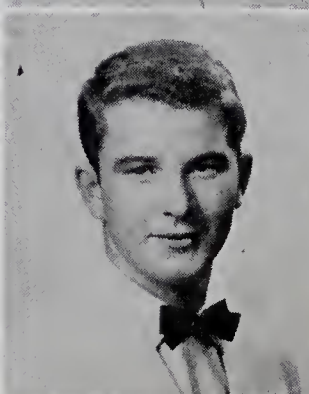
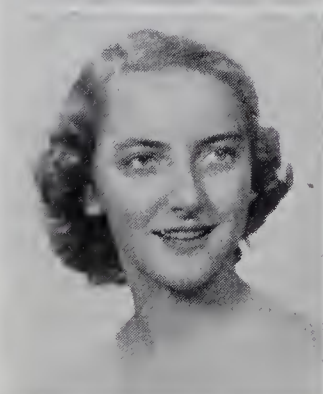


Daniel Joseph Park

He would argue with a stake,
But Danny's got what it will take.

Bettyjean Parks

Quick in problems and light on
her feet,
She's got a quality that you can't
beat.



Eldon Hudson Parks

His car, "The Green Hornet,"
they call,
"Heaf" is a standing friend to all.

Faye Payne

Happy go lucky, carefree and all,
But when you need help, give her
a call.



Mary Lee Price

A quiet girl is Mary Lee;
She was as pleasant as could be.

SENIORS

Thomas Daniel Stanley

Tommy, who has a Henry J.,
Is admired for his friendly way.



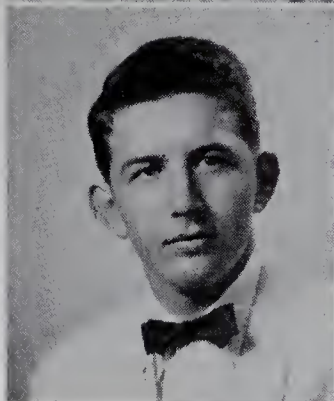
Bobby Steele

"Romeo" as he's known to us;
His friendly ways will never rust.



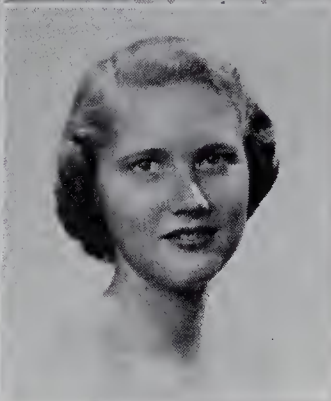
John Henry Steele

John Henry shoots with accuracy;
In life we know a success he'll be.



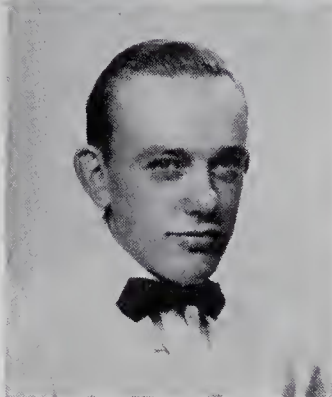
Betty Lou Wall

A former "Miss Elkin High,"
Is pretty and will always try.



Frank Dee Young

He would do anything for a laugh,
And you should see him crank
that mimeograph.



CLASS POEM

Tell us, O ubiquitous and omniscient Walls,
That which you have seen.
"I have seen all—Your perfections and imperfections,
Your merits and shortcomings.

"I have seen you planning and hoping,
I have seen you helping and hindering,
I have seen you hurting and loving,
I have seen you trying and loafing,
I have seen you desiring and striving,
I have seen you winning and losing,
I have seen you asking and giving,
I have seen you thinking and wondering,
I have seen you dreaming and discovering,
I have seen all.

"Now I see you leaving me,
Trying in vain to express the inexpressible gratitude
To those who have dedicated themselves to inspire you
To seek the truth.
Seek it.

"Now I see you leaving each other,
Trying not to show the tug at your heart.
Remember your cheerful friends,
Remember every year, day, and second you were together.
These things are you—
Remember them."

—E. F. Harris, Jr., Poet

SENIOR ACHIEVEMENTS

JOHN ATWELL—Football 1, 2, 3, 4; Basketball 1, 3, 4; Baseball 1, 2, 4; Hi-Y Club 1, 2, 3, 4, Sergeant-at-Arms 4; Monogram Club 2, 3, 4; Class Treasurer 3; Bi-Phy-Chem Club 3; Spanish Club 3, 4, Chaplain 4; Advertising Manager *The Elk* 4; Associate Editor *The Elk Antler* 4; Glee Club 4.

BILL BARNETTE—Football 3, 4; Basketball 3, 4; Baseball 3, 4; Monogram Club 3, 4, President 4; Hi-Y Club 3, 4; Sports Editor *The Elk Antler* 4; *The Elk Staff* 4; Glee Club 4.

ANNA MAE BEULIN—Student Council 2; Tri-Hi-Y 1, 2; Cheerleader 1, 2; D.O. Club 4, Treasurer 4.

ALDA BLEVINS—Lewisville High School 1, 2, 3; F.H.A. Club 4; Glee Club 4.

BONNIE SUE BOWMAN—Band 1, 2, 3, 4, Secretary and Treasurer 1, Student Director 3, Treasurer 4; Spanish Club 3, 4, President 4; Beta Club 3, 4; Bi-Phy-Chem Club 3; Marshal 3; Glee Club 4.

HONOR LUCILLE BRIGHT—4-H Club 1, 2, 3, 4; D.O. Club 4.

PEGGY BROOKS—Traphill High School 1, 2, 3; D.O. Club 4.

ANNE CARTER—Tri-Hi-Y Club 3, 4; *The Elk Antler Staff* 4; *The Elk Staff* 4; Glee Club 4.

DAVID J. CAUSEY—4-H Club 2; Spanish Club 3; D.O. Club 4.

MARY SUE CHIPMAN—Tri-Hi-Y Club 1, 2, 3, 4; Basketball 1, 2; *The Elk Antler Staff* 4; *The Elk Staff* 4; Quill and Scroll 4, Secretary 4; Glee Club 4.

MARGARET CLEARY—Tri-Hi-Y Club 1, 2, 3, 4; Library Assistant 2; Band 3, Beta Club 3, 4; Basketball Manager 3, 4; Associate News Editor *The Elk Antler* 4; Circulation Manager *The Elk* 4; Quill and Scroll 4; Glee Club 4.

RUTHIE CLICK—Class Vice-President 1; Tri-Hi-Y Club 1, 2, 3, 4; Basketball 1, 2, 3, 4; Cheerleader 1, 2, 3, 4; Feature Editor *The Elk Antler* 4; *The Elk Staff* 4; Monogram Club 4; Glee Club 4.

REX COCKERHAM—Hi-Y Club 4; Spanish Club 4.

FRANKIE COOPER—4-H Club 1, 2; F.H.A. Club 1, 2; Tri-Hi-Y Club 4; D.O. Club 4.

JACKIE KEITH COOPER—Baseball 1; Football 3; Hi-Y Club 3, 4; D.O. Club 4.

ROBERT CREED—Football 1, 2, 4; Baseball 1, 2, 3; Monogram Club 1, 2, 3, 4; Class President 2; Basketball 2, 3; Student Council 3; Production Manager *The Elk Antler* 3; *The Elk Staff* 3; D.O. Club 4, President 4; Glee Club 3.

EDNA WHITE DILLON—Class Treasurer 1; Basketball 1; Cheerleader 1, 2, 3, 4; Tri-Hi-Y Club 1, 2, 3, 4, President 4; Beta Club 3, 4, President 4; Chief Marshal 3; Monogram Club 3, 4; Interclub Council 4; *The Elk Antler Staff* 4; Editor-in-Chief *The Elk* 4; Quill and Scroll 4; Class Vice-President 4; Glee Club 4.

DELLA SABRILLA DOBBINS—Dobson High School 1, 2; 4-H Club 3, 4, Reporter 3, Pianist 4; Beta Club 3, 4, Chaplain 4; Office Assistant 3; D.O. Club 4, Secretary 4.

ROBERT JETT DRIVER, JR.—Central Junior High School 1; Lane High School 2; Baseball 3, 4; Student

Council 4; Monogram Club 4; Hi-Y Club 4; Basketball 4; D.O. Club 4, Vice-President 4; Football 4, Co-Captain 4.

BILLY O'NEIL FRANCIS—4-H Club 1, 2; Baseball 2, 3, 4; Monogram Club 3, 4, Vice-President 3; Football 3, 4; Track 3, 4; Hi-Y Club 3, 4; *The Elk Staff* 4; Glee Club 4.

ZETTA LOU FREEMAN—Basketball 1, 2, 3, 4; Tri-Hi-Y Club 3, 4; Monogram Club 3, 4; Spanish Club 3, 4, Secretary 4; *The Elk Antler Staff* 4; *The Elk Staff* 4; Glee Club 4.

NANCY CARROLL GAMBILL—Tri-Hi-Y Club 1, 2, 3, 4; Fashion Editor *The Elk Antler* 4; Photography Editor *The Elk* 4; Quill and Scroll 4; Class Giftorian 4; Football Queen 4.

BERTIE MAE GENTRY—Ronda High School 2, 3; 4-H Club 3; Beta Club 4; D.O. Club 4.

CAROLYN GENTRY—Tri-Hi-Y Club 1, 2; Beta Club 3, 4; Spanish Club 3, 4; Glee Club 4.

JOSEPH BIRDETTE GENTRY, JR.—4-H Club 1, 2, 3, 4, President 3, 4, Vice-President County Council 4; Monogram Club 3, 4; Basketball 2; Football 3, 4; Glee Club 3, 4.

DIXIE GRAHAM—Tri-Hi-Y Club 1, 2, 3, 4, Vice-President 3; Cheerleader 1, 2, 3; Track 2; Marshal 3; Monogram Club 2, 3, 4; Beta Club 3, 4.

PAT GRAHAM—Cheerleader 1, 2, 3, 4, Chief 4; Tri-Hi-Y Club 1, 2, 3, 4, Treasurer 3, Vice-President 4; Basketball 1, 2, 3, 4; Class President 1; Class Vice-President 3; Student Council 1, 4, Treasurer 4;



Nancy Gambill, Football Queen

SENIOR ACHIEVEMENTS

Monogram Club 2, 3, 4; Beta Club 3, 4, Secretary 4; Interclub Council 3, 4, Reporter 3, Treasurer 4; Marshal 3; Girls' State 3; Art Editor *The Elk Antler* 4; *The Elk Staff* 4; Quill and Scroll 4, President 4; Class Historian 4; Glee Club 4.

LINDA SUE GUYER—4-H Club 1, 2, 3, 4, Secretary 4; F.H.A. Club 1, 2, 3, 4, Vice-President 3, President 4; D.O. Club 4; Glee Club 3.

JOHN A. HAMPTON—Hi-Y Club 2, 3, 4; Boys' State 3; Beta Club 3, 4, Treasurer 4; Bi-Phy-Chem Club 4; Glee Club 4.

NORMA LEE HANKS—4-H Club 1, 3, 4; Tri-Hi-Y Club 2, 3, 4; D.O. Club 4; Glee Club 3.

EDWIN F. HARRIS, JR.—Hi-Y Club 1, 2, 3, 4, Sergeant-at-Arms 3, Treasurer 4; Football 1, 3, 4, Co-Captain 4; Glee Club 2; Spanish Club 2, 3, 4, Secretary 3; Track 2, 3; Boys' State 3; Class President 3; Monogram Club 3, 4; Beta Club 3, 4, Vice-President 4; Interclub Council 4; Student Council 4; Class Poet 4.

ELIZABETH ANN HARRIS—Basketball 1; Tri-Hi-Y Club 1, 2, 3, 4, Secretary 3; Cheerleader 2, 3, 4; Girls' State 3; Marshal 3; Interclub Council 3; Student Council 3, 4, Secretary 4; Beta Club 3, 4; Monogram Club 4; Editor-in-Chief *The Elk Antler* 4; *The Elk Staff* 4; Quill and Scroll 4; Glee Club 4.

VETREAL HINSON—F.H.A. Club 1, 2, Secretary 2; Tri-Hi-Y Club 1, 3; Social Editor *The Elk Antler* 3; D.O. Club 4.

FRED HOLCOMB—Basketball 1, 2; 4-H Club 1, 2, 3; Baseball Manager 2; Football Manager 2, 3; Hi-Y Club 2, 3, 4; Monogram Club 2, 3, 4; Assistant Production Manager *The Elk Antler* 4; *The Elk Staff* 4.

JOHNNY HUNTER—Assistant Production Manager *The Elk Antler* 3; Glee Club 3; Class President 4; D.O. Club 4.

GWEN KING—Latin Club 3, 4; Bi-Phy-Chem Club 3, 4; Tri-Hi-Y Club 4; Office Assistant 3, 4.

GEORGE LEE McCOIN—4-H Club 4.

SAM D. MARSHALL—D.O. Club 4.

SAM W. MARSHALL—Senior Scouts 1, 2, 3, 4; Hi-Y Club 2; Spanish Club 3, 4; Class Treasurer 4.

VERA GENEVIEVE MONEY—4-H Club 1, 2, 3, 4; Vice-President 3, 4, County Treasurer 3; F.H.A. Club 1, 2, 3; Glee Club 3; D.O. Club 4.

NEIL MULLIS—Sullivan High School 1, 2, 3; Football 4; Baseball 4; Hi-Y Club 4; Debating Club 4, President 4; Bi-Phy-Chem Club 4; Spanish Club 4; Track 4; Business Manager *The Elk* 4; News Editor *The Elk Antler* 4; Cheerleader 4.

CHARLES LOUIS NEAVES—Hi-Y Club 1, 2, 3, 4, Treasurer 3; Football 2, 3, 4; Basketball 3, 4; Student Council 3, 4, President 4; Interclub Council 3; Monogram Club 4; Glee Club 4.

ANN LEE OSBORNE—Cheerleader 1, 2, 3, 4; Basketball 1, 2, 3, 4; Tri-Hi-Y Club 2, 3, 4; Monogram Club 3, 4; F.H.A. Club 4; Glee Club 4.

DANIEL JOSEPH PARK—Hi-Y Club 1, 2, 3, 4, President 4; Basketball 1, 3, 4; Student Council 2, 3, Vice-President 3; Track 2, 3, 4; Monogram Club 2, 3, 4; Beta Club 3, 4; Football 3, 4; Football Manager 2; Baseball 3, 4; Interclub Council 4, Vice-President 4; Class Prophet 4; Debating Club 4; Glee Club 4.



Mr. Elkin High, Bobby Steele
Miss Elkin High, Dorothy Hodges

BETTYJEAN PARKS—4-H Club 1; F.H.A. Club 3; Marshal 3; Spanish Club 3, 4; Bi-Phy-Chem Club 3, 4, Reporter 4; Beta Club 3, 4; Basketball 3, 4; Monogram Club 4; Tri-Hi-Y Club 4; Class Testator 4.

ELDON HUDSON PARKS—4-H Club 2, 3; Hi-Y Club 2, 3, 4; Glee Club 3, 4; Assistant Production Manager *The Elk Antler* 3; Business Manager 4; Football 4; *The Elk Staff* 3, 4; Monogram Club 4; Class Giftorian 4.

FAYE PAYNE—F.H.A. Club 1; Cheerleader 2; Tri-Hi-Y Club 1, 2, 3, 4; Exchange Editor *The Elk Antler* 4; *The Elk Staff* 4; Glee Club 4.

MARY LEE PRICE—Basketball 2, 3; F.H.A. Club 3, 4; D.O. Club 4.

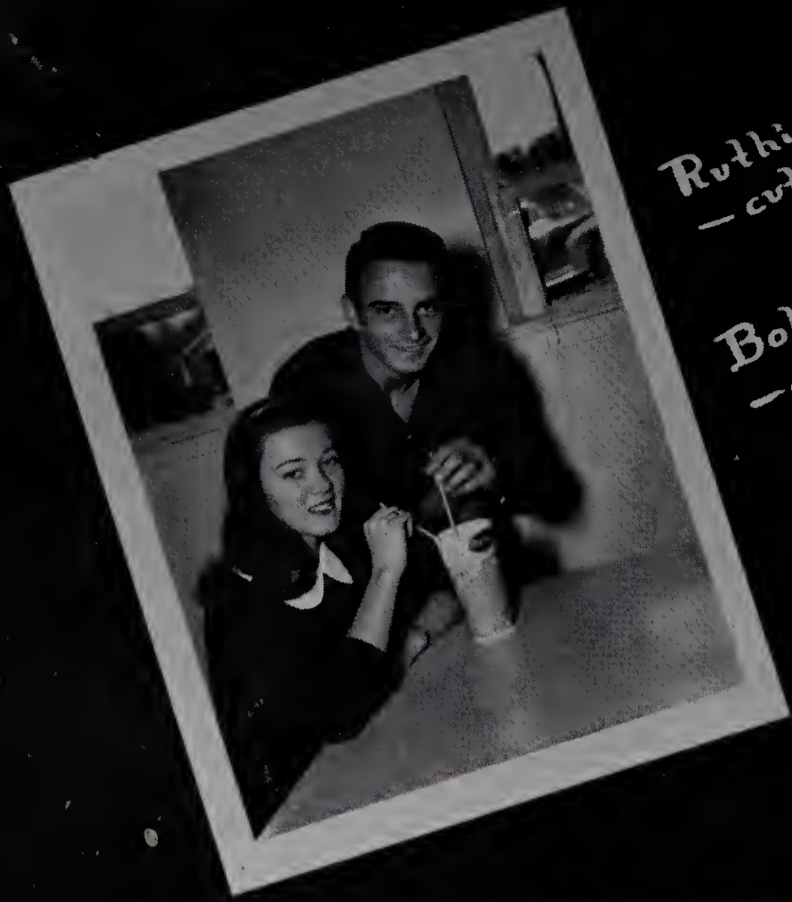
THOMAS DANIEL STANLEY—West Yadkin High School 1, 2, 3; D.O. Club 4.

BOBBY STEELE—C. H. Friend High School 1; Basketball 2, 3, 4; Sports Editor *The Elk Antler* 3, Fashion Editor 4; *The Elk Staff* 3, 4; Spanish Club 4; Hi-Y Club 4.

JOHN HENRY STEELE—4-H Club 1, 2, 3; Basketball 2, 3, 4; Baseball 2, 3, 4; Monogram Club 2, 3, 4; Hi-Y Club 3, 4; Bi-Phy-Chem Club 3, 4; Assistant Business Manager *The Elk Antler* 4; *The Elk Staff* 4.

BETTY LOU WALL—Tri-Hi-Y Club 1, 2, 3, 4; Basketball 1, 2, 3, 4; Miss Elkin High 3; Class Secretary 3; Monogram Club 2, 3, 4; Social Editor *The Elk Antler* 4; *The Elk Staff* 4; Quill and Scroll 4; Glee Club 4.

FRANK DEE YOUNG—Student Council 1; 4-H Club 1, 2, 3, 4; Hi-Y Club 1, 2, 3, 4; Monogram Club 1, 2, 3, 4, Treasurer 4; Basketball 3, Manager 1, 2; Football Manager 3; Baseball 3, 4; Baseball Manager 1, 2; Track 3, 4; Sports Editor *The Elk Antler* 3, Production Manager 4; *The Elk Staff* 3, 4; Glee Club 4.



Ruthie Click
- cutest girl
Bobby Driver
- cutest boy



Pat Graham
- most popular girl
best all-around
friendliest
best personality
wittiest
most athletic girl

John Hampton
- most studious boy



Bonnie Bowman
- most studious girl
most apt-to-succeed

John Atwell
- most athletic boy



Danny Park
- most ambitious boy

Johnny Hunter
- most apt-to-succeed

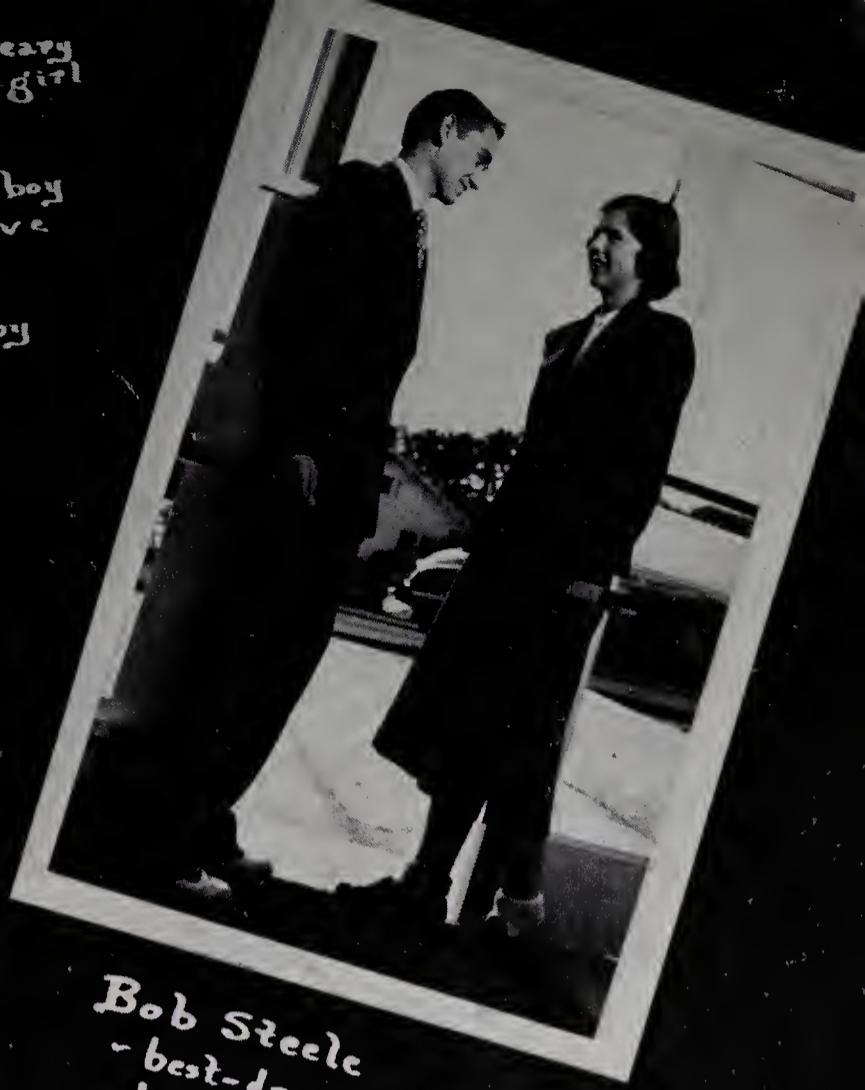


Anna Mae Beulin
- most original girl
Abie Harris
- most original boy
best personality
most intelligent



Margaret Cleary
- most dignified girl

Bob Creed
- most dignified boy
- most attractive
- best sport
- friendliest boy

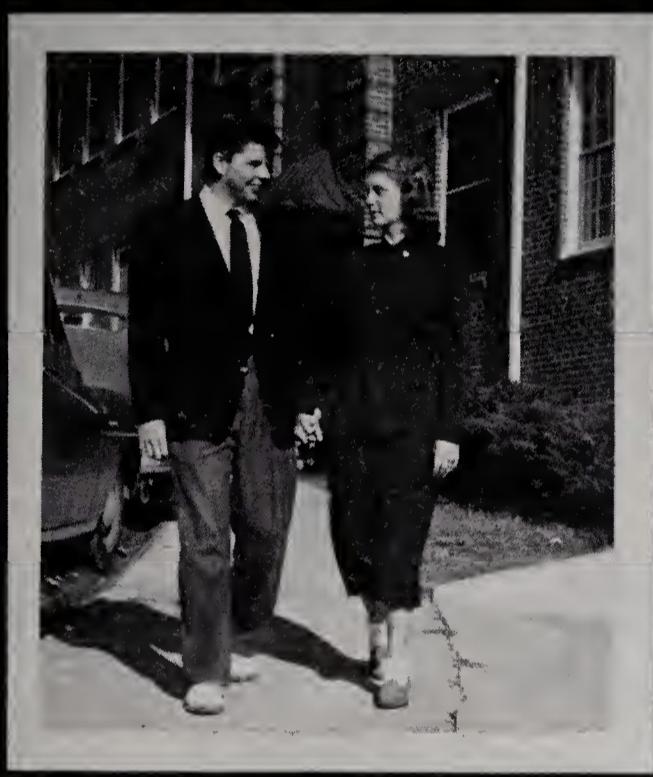


Bob Steele
- best-dressed boy
- best mannered

Elizabeth Harris
- best mannered girl
- most ambitious
- most intelligent

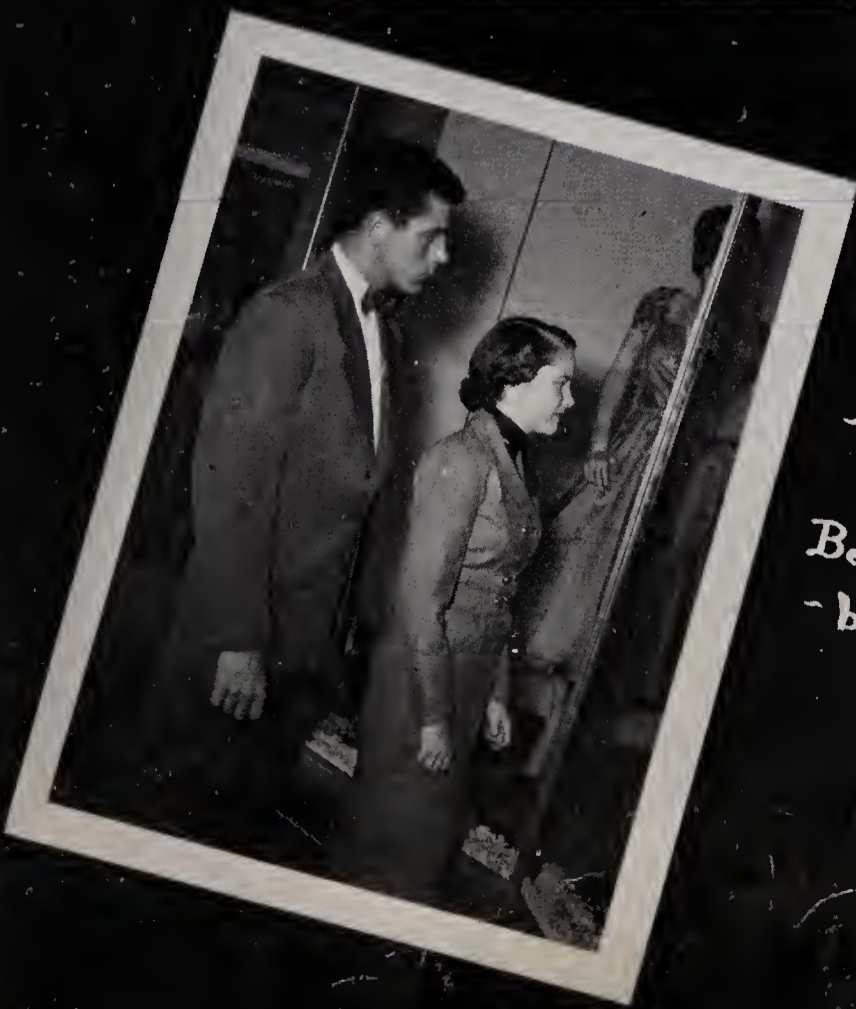
Louis Neaves
- best all-around

Edna Dillon
- most attractive



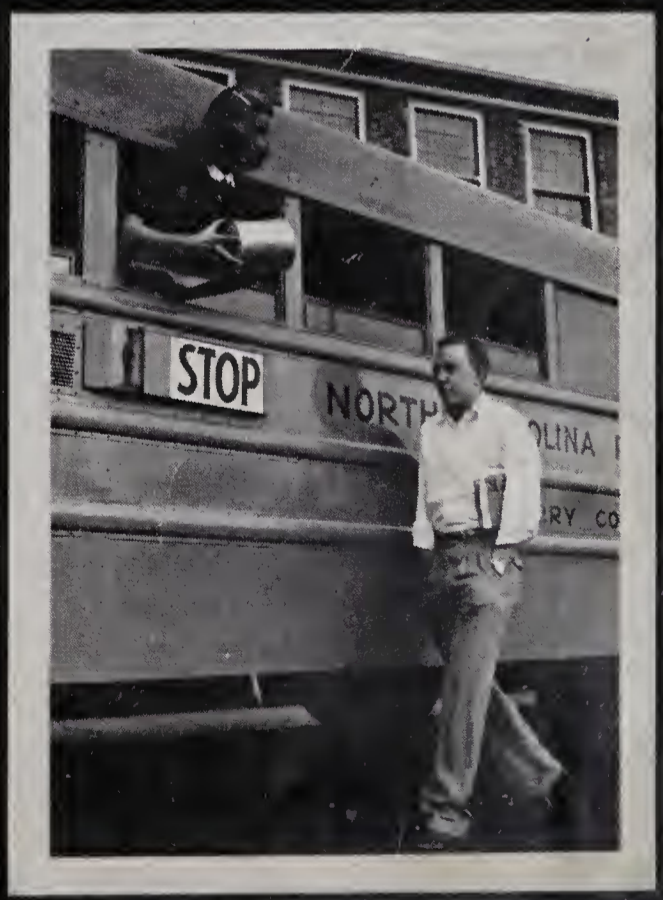
Bob Steele

Elizabeth Harris



J.B. Gentry
- most popular boy

Betty Wall
- best-dressed girl



Nancy Gambill
- best sport
Frank Young
- wittiest boy

CLASS HISTORY

DEDICATION

We dedicate this series of novels to our teachers and parents, who have so carefully and constantly inspired, loved and moulded us into the characters we are. May we, the characters, resolutely merit their efforts.

INTRODUCTION

Through these four historical novels we attempt to record for you who have watched us go through these, the best pages of our lives, our activities during the past four years in Elkin High School.

VOLUME I

Title—Freshman Year.

Author—Eighty-two inexperienced and confused Freshmen.

Leading Characters—Pat Graham, president; Ruthie Click, vice-president; Betty Wall, secretary; and Edna Dillon, treasurer.

Publishers—Miss Ethel Whitley and Miss Eva Steelman.

Date of Publication—1948-1949.

Review

This style of writing is new to the authors, who have had only elementary training. They are a trifle shy at expressing their thoughts, but soon become accustomed to their environment and are quick to learn. Pat Graham and Betty Jo Walters are Student Council representatives. Several Freshmen receive national Latin awards. Although it is brief, we are well satisfied with our first publication.

VOLUME II

Title—Sophomore Year.

Author—Sixty-six cheerful Sophomores.

Leading Characters—Bob Creed, president; J. T. Atkins, vice-president; George Gambill, secretary; and Jo Ann Crater, treasurer.

Publishers—Mrs. Arbie Miles, Mr. Vernon Price, and Miss Mary E. Holland.

Date of Publication—1949-1950.

Review

Our characters have become more prominent and are taking an active part in the school organizations and extra-curricular activities. Our second book has an improved setting—a new school building. Bobby Steele becomes a member of our class. Bonnie Bowman participates in the Oratorical Contest. One of our members, Jo Ann Crater, is elected "football queen" for the 1949 football season. Anna Mae Beulin and Danny Park are the Sophomore representatives in the Student Council, and Danny is elected vice-president for the following year. J. T. Atkins is crowned "football king" at the annual girls' football game. Our second year as "underclassmen" is successfully finished, and we look forward with great expectations to our third edition.

VOLUME III

Title—Junior Year.

Author—Fifty-seven enthusiastic Juniors.

Leading Characters—Abie Harris, president; Pat Graham, vice-president; Betty Wall, secretary; John Atwell, treasurer.

Publishers—Miss Betty Linney and Mr. Jesse Hollingsworth.

Date of Publication—1950-1951.

Review

One would be compelled to scrutinize every bookshop to find a book so happy and sanguine. Two new characters, Bob Driver and Alda Blevins, have been added. It is a book of many highlights. Edna Dillon, Elizabeth Harris, Pat Graham, Bonnie Bowman, Bettyjean Parks and Dixie Graham are elected marshals; Johnny Hunter is declared winner of the local "I Speak for Democracy" contest and also achieves third place in the state-wide "Voice of Democracy" contest; we receive our long awaited class rings, and although we have

CLASS HISTORY

seen them many times, it gives us an unforgettable thrill to have one of our own; Elizabeth Harris and Louis Neaves represent us in the Student Council; our female characters win the intramural basketball contest while the males are runners-up; Pat Graham and Elizabeth Harris are chosen to attend Girls' State, and John Hampton and Abie Harris obtain the privilege of being the first boys selected to attend Boys' State from this community; thirteen of our characters endure a rigorous, Beta Club initiation; and three of our members are elected to offices in the Student Council for the following year—Louis Neaves, president; Elizabeth Harris, secretary; and Pat Graham, treasurer. We approach our climax, the Junior-Senior prom, selling magazines, boosterettes, and sponsoring a Mr. and Miss Elkin High contest, in which one of our own Juniors, Betty Wall, captured the title, "Miss Elkin High." Our Junior-Senior prom, "A Day in the Old South," will truly be a day we shall never forget. We worked hard, and were rewarded for our efforts by lingering memories of the beguiling, old Southern setting and the music of Dick Levin and his orchestra.

VOLUME IV

Title—Senior Year.

Author—Fifty-three proud Seniors.

Leading Characters—Johnny Hunter, president; Edna Dillon, vice-president; Zetta Lou Freeman, secretary; and Sam W. Marshall, treasurer.

Publishers—Mrs. Hardin Royall and Mrs. Mae Pardue.

Date of Publication—1951-1952.

Review

The critics acclaim us for this, our best work. Neil Mullis, Thomas Stanley and Peggy Brooks have come into our midst. Elizabeth Harris is elected Editor-in-Chief of *The Elk Antler*, and Edna Dillon is elected Editor-in-Chief of *The Elk*.

Pat Graham is selected chief cheerleader. Nancy Gambill is crowned "football queen" by Abie Harris and Bob Driver, co-captains for the 1951 football season. Abie Harris and Bob Driver represent the Senior Class in the Student Council. Many of our characters have participated in sports, band and cheerleading during the past four years. Those who have participated in football are as follows: John Atwell, Louis Neaves, Danny Park, Neil Mullis, Abie Harris, Eldon Parks, Jackie Cooper, Bill Francis, Bob Creed, Bob Driver, Bill Barnette and J. B. Gentry; in girl's football: Pat Graham, Mary Sue Chipman, Bettyjean Parks, Edna Dillon, Dixie Graham and Gwen King; in basketball: Bill Barnette, John Atwell, Bob Steele, Ruthie Click, Mary Sue Chipman, Betty Lou Wall, Edna Dillon, Louis Neaves, Danny Park, Bettyjean Parks, Abie Harris, Elizabeth Harris, Zetta Lou Freeman, Bill Francis, John Henry Steele, Ann Osborne, Bob Driver, Bob Creed, Fred Holcomb, Alda Blevins and Frank Young; in baseball: Bill Francis, John Henry Steele, Jackie Cooper, Bob Driver, Bob Creed, Bill Barnette, John Atwell, Danny Park, Neil Mullis and Frank Young; in softball: Margaret Cleary, Bettyjean Parks, Frankie Cooper and Gwen King; in track: Danny Park, Abie Harris, Johnny Hunter, Bill Francis and Dixie Graham; in cheerleading: Ann Osborne, Pat Graham, Ruthie Click, Edna Dillon, Elizabeth Harris, Faye Payne, Anna Mae Beulin and Dixie Graham; in band: Bonnie Bowman and Margaret Cleary.

Many of us will go forward to join a higher and more experienced staff, and others of us will become authors in their own special fields of life. We have happily written these pages and now place the books on the shelf, never to be forgotten by us, and we hope by you.

Finis

Pat Graham, Historian



OFFICERS

- Patsy Francis *Secretary*
J. L. Lowe, Jr. *President*
Errol Hall *Treasurer*
Sarah Boyles *Vice-President*

JUNIOR CLASS

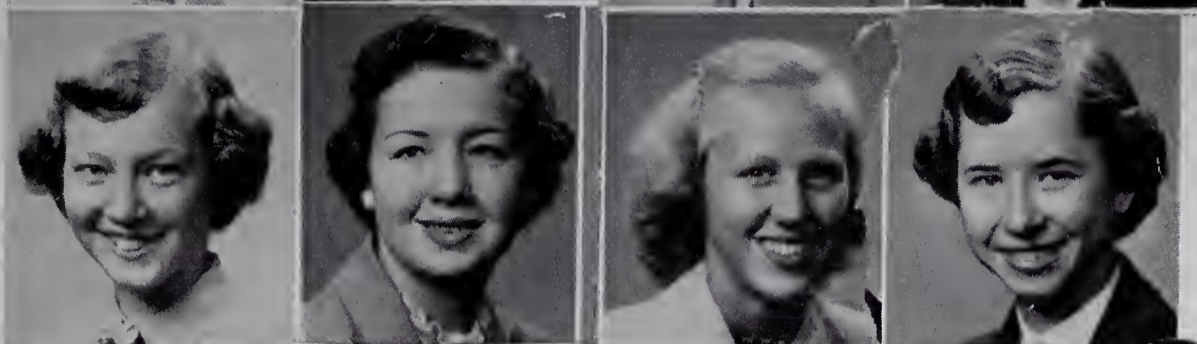


JUNIORS

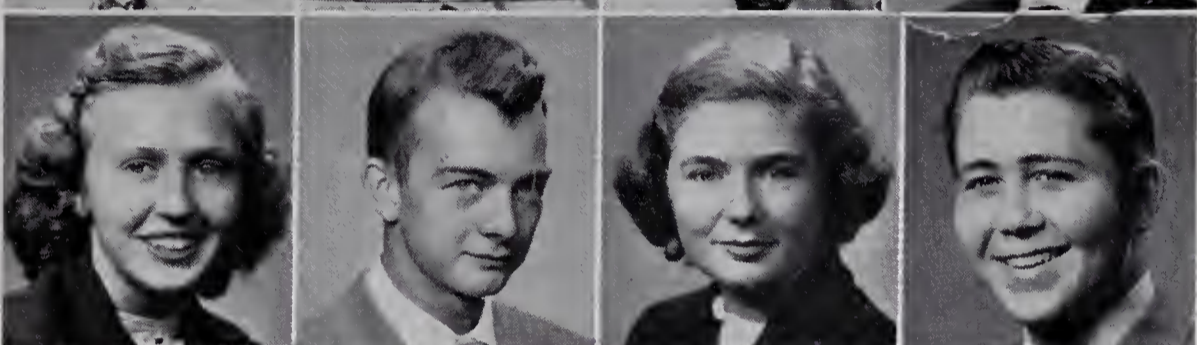
Peggy Jean Adams
 Charles Ashby
 Patsy Atkins
 Lucy Ann Ball



Jean Bowman
 Sarah Boyles
 Mabel Brinegar
 Janet Burcham



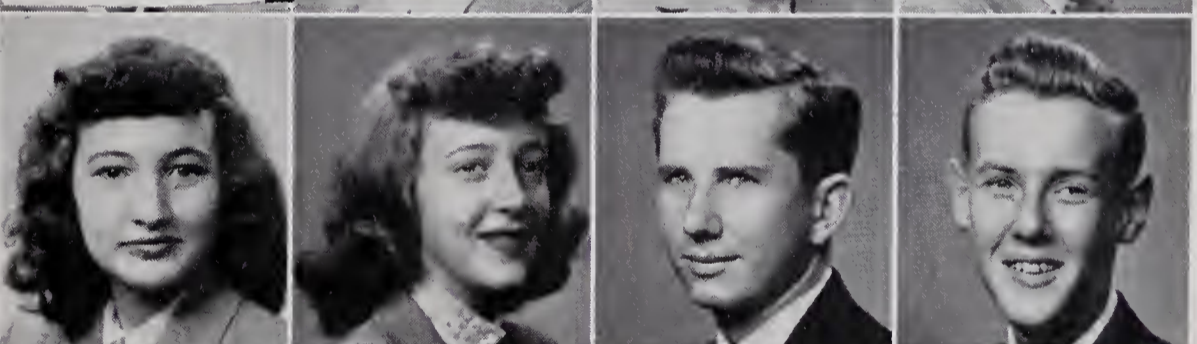
Barbara Cave
 Frank Chatman
 Joyce Cochrane
 Roger Collins



Dale Combs
 Kitty Cranford
 Cathryn Darnell
 Jacque Darnell



Polly Dudley
 Ann Durham
 Charles Edwards
 Fred Eidson



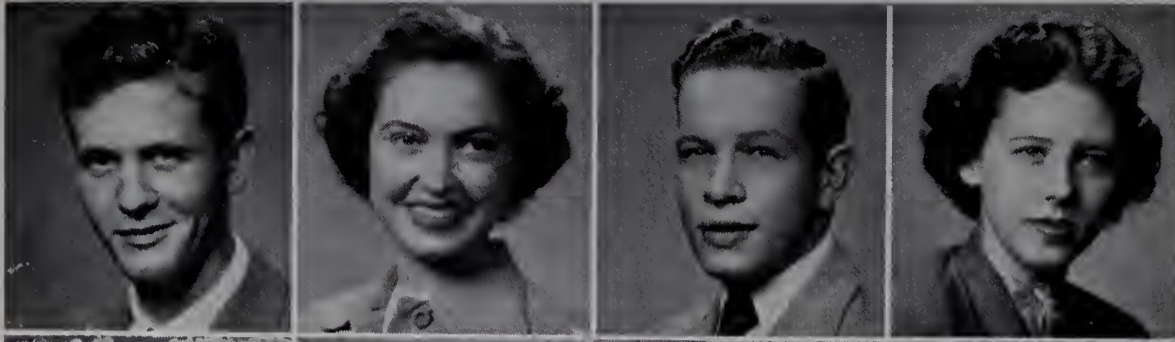
Betty Felts
 Pat Francis
 Buddy Gaither
 Jack Gentry



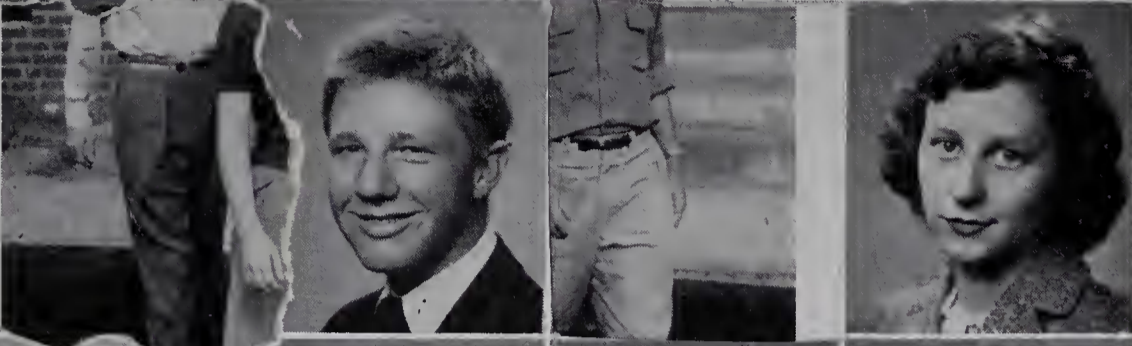
June Gentry
 Carol Guth
 Edna Guyer
 Kay Guyer



JUNIORS



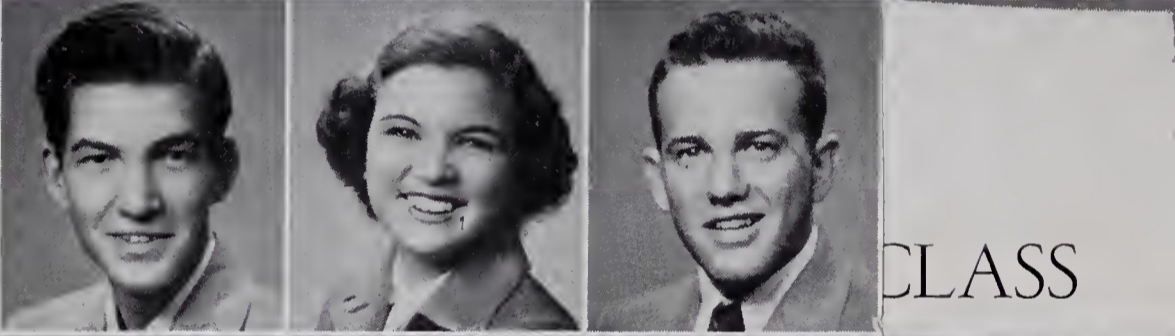
Errol Hall
 Betty Ellen Harris
 David Hayes
 Emaline Hayes



Howard Hayes
 John D. Haynes
 Shirley Helton
 Dorla Hinson



Angelene Holbrook
 Bettie Jean Holbrook
 Patsy Holcomb
 Bobby Holloway



Ronald Jennings
 Georgia Jolley
 J. L. Lowe, Jr.
 Cortez Gilbert Lowery

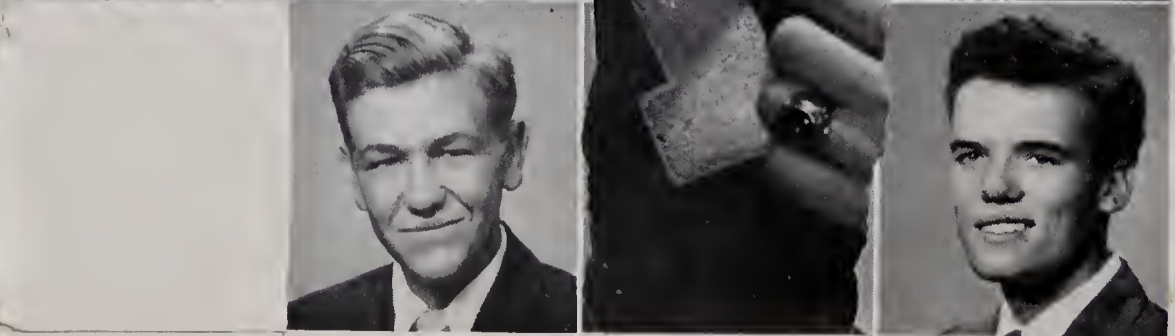
CLASS



Parks McBride
 Shirley Lawrence Maines
 Mary Lou Martin
 Patsy Martin



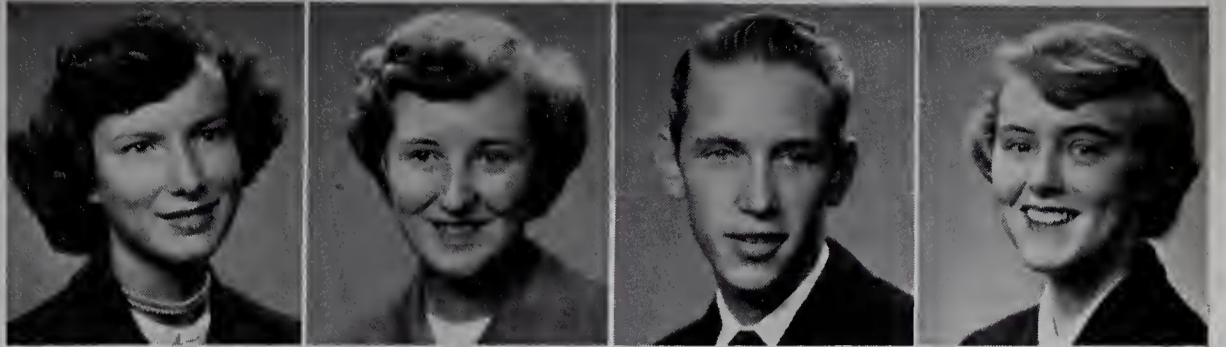
Jacque Miller
 Dickie Minish
 Emaline Mitchell
 Kathryn Osborne



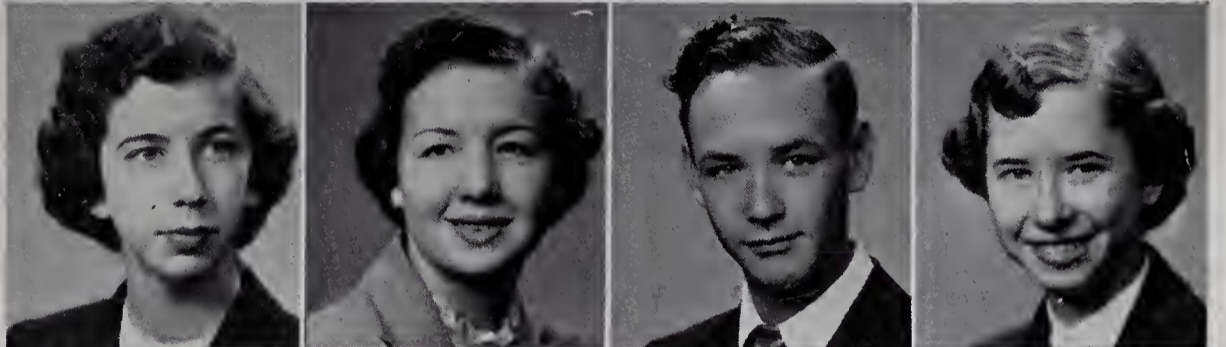
Polly Price
 Bobby Reinhardt
 Frances Russell
 Donald Settle

JUNIORS

Virginia Pardue Shoemaker
 Barbara Sofley
 Tommy Sprinkle
 Carol Stuart



Betty Thomasson
 Colleen Transou
 Archie Tucker
 Wanda Tulbert



Lois Wagoner
 Mickey Wagoner
 Janet Walker
 Henry Walters



Pat Williams
 Faye Wilmoth



Charles Fletcher '51
 Betty Ellen Harris '53





OFFICERS

Charles Johnson *Secretary*

Murphy Osborne *President*

Betty Gale Disher *Treasurer*

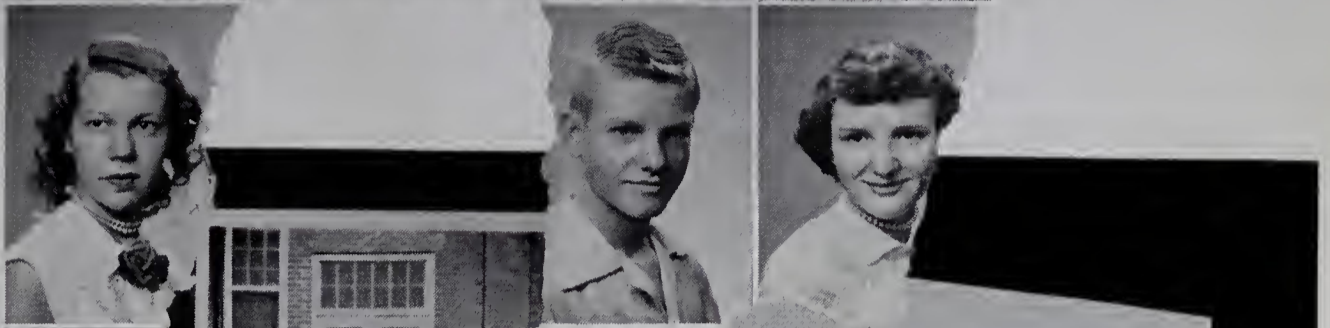
SOPHOMORE CLASS



A. P. Alexander
 Dorothy Barker
 Velda Blackburn
 Jane Boyles
 Jackie Brown



Martha Bruce
 Janice Butner
 Dickie Caudle
 Shirley Caudle
 Helen Chatman



Millie Cleary
 Daniel Cockerham
 Nancy Cockerham
 Sammy Cockerham
 Maxine Collins



Peggy Collins
 Frankie Combs
 Barbara Cooper
 Mildred Cooper
 Sally Corder



Ailene Couch
 Jo Ann Couch
 Jimmy Darnell
 Johnny Davis
 Clifton DeBorde



Betty Gail Disher
 Violet Durham
 Kay Farrell
 Miner Flynt
 Billy Joe Gentry



Bobby Gentry
 Norma Jean Gentry
 Bobby Graham
 Mary Guyer
 Tony Hanks



Peggy Harmon
 Lee Harpe
 Edith Hayes
 Jimmy Hemric
 Steve Hinshaw





Lena Holbrook
Joan Hudson
Nola Hutchins
Doris Ingool
Ruthie Jackson

Larry James
Charles Johnson
Joe Jurney
Joe Layell
Thelma Luffman

Dorothy McBride
Phyllis Maines
Donald Marshall
Billy Martin
Sylvia Martin

Rex Masten
Loretta Miller
Royce Miller
Betty Ruth Nixon
Murphy Osborne

Ellen Poplin
Jimmy Price
June Pruitt
Edith Ray
Peggy Reinhardt

Weldon Richardson
Jimmy Ring
Pat Seagraves
Lana Settle
Maxine Settle

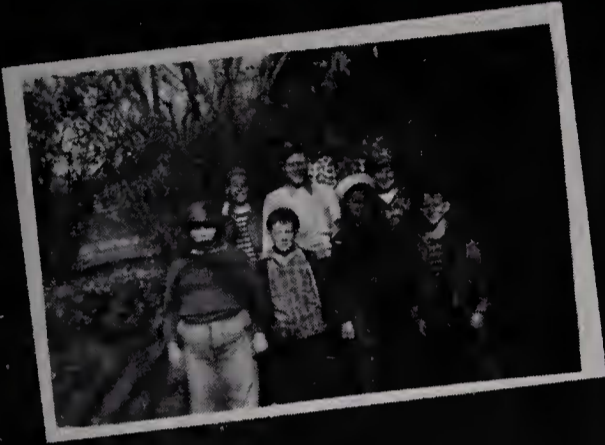
Margaret Shepherd
Nicky Shore
Jackie Sloop
Mary Lois Smith
Patsy Sofley

Johnny Swaim
Jo Ann Teague
Billie Tinsley
Gailya Tucker
Buddy Vestal

Chalmer Waters

Pat Windsor

Donald Yarboro





OFFICERS

Jeane Smitherman *Vice-President*

Joe Price *President*

Lyndon DeBorde *Secretary*

Twinkle Jackson *Treasurer*

FRESHMAN CLASS



Barbara Jean Adams
 Rena Adams
 Cora Alexander
 Betsy Ball
 Kay Beulin



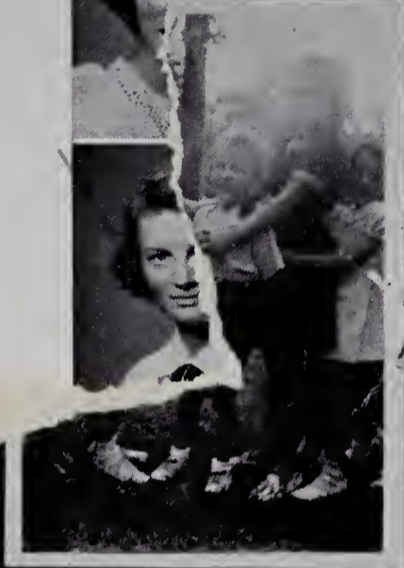
Jimmy Bivins
 Edward Blackburn
 Rita Blackburn
 Melba Blevins
 Jimmy Bradley



Alyce Braxton
 Walter Burch
 Annie Gray Calhoun
 Donald Carter
 Willie Carter



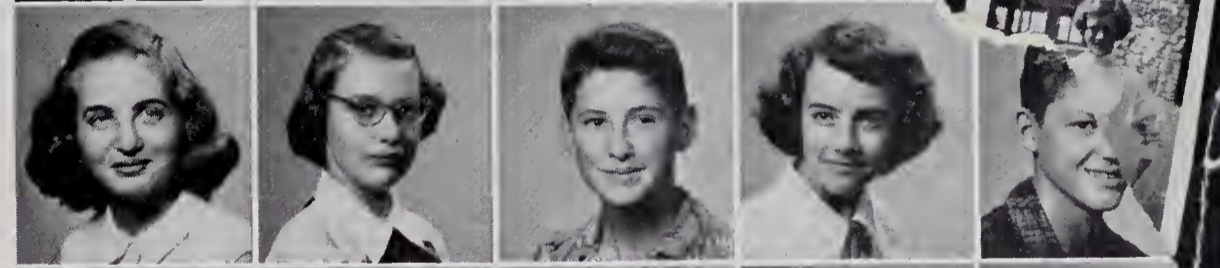
Glenda Leigh Caudle
 Jimmy Chappell
 "Bill" Cheek



Dr. Edwards
 Howard Felts



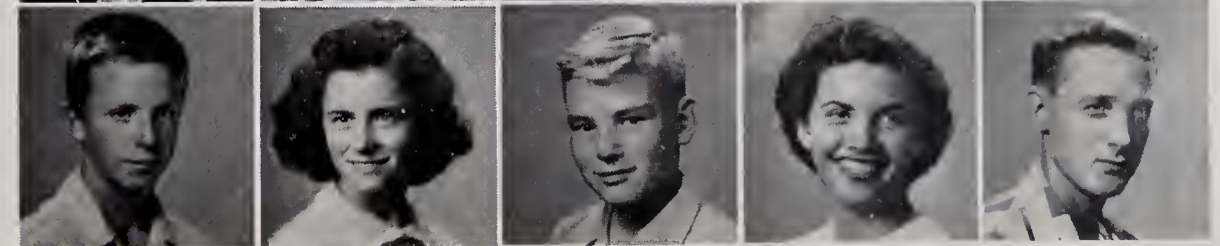
Margaret Fletcher
 Vicky Franklin
 Wendell Guth
 Annie Kathern Guyer
 Allen Hall



Henry Hampton
 B. W. Harris, Jr.
 Clyde Hayes
 Clara Haynes
 Bruce Hinson



Harold Hinson
 Jane Hinson
 Dick Hodel
 Dorothy Hodges
 Bud Holcomb



*Some
 Dorothy
 Beulin*



Josie "Jo" Irvin
 Annie Sue Jackson
 Twinkle Jackson
 Linda Jennings
 Jimmy Jolley

Donald Koontz
 Mary Laffoon
 Dolores Lipford
 Mary Ann Long
 Glenda Ruth Lowe

Jeane Smith

Anice Lyon
 Melvin McBride
 Eddie Martin
 Aubrey Merritt
 Pat Mitchell

Joe Price

Lyndon De

Twinkle Ja

Barbara Newman
 Junior Newman
 Nellie Newman
 Allen O'
 R



le Rose
 Bobby Roth
 Barbara Sale

Larry Simmons
 Jimmy Sloop
 Rose Marie Smith
 Jeane Smitherman
 Arlie Stanley

Ferrell Stroud
 Barbara Ann Swaim
 Nancy Lee Swaim
 Jimmy Taylor
 Marquita Thomas

Billy Transou
 Ralph Triplette
 Hollis Tucker
 Howard Tucker
 Lorene "Loddy" Tucker

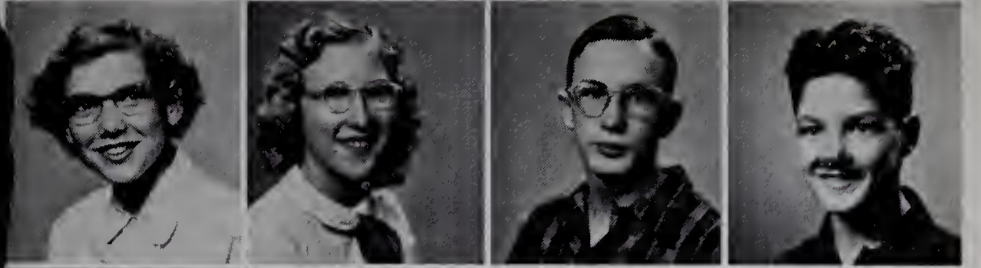
Bill Tulbert

Dolores Wagoner

Shelba Wagoner

Bennie Ward

Charlie Waters



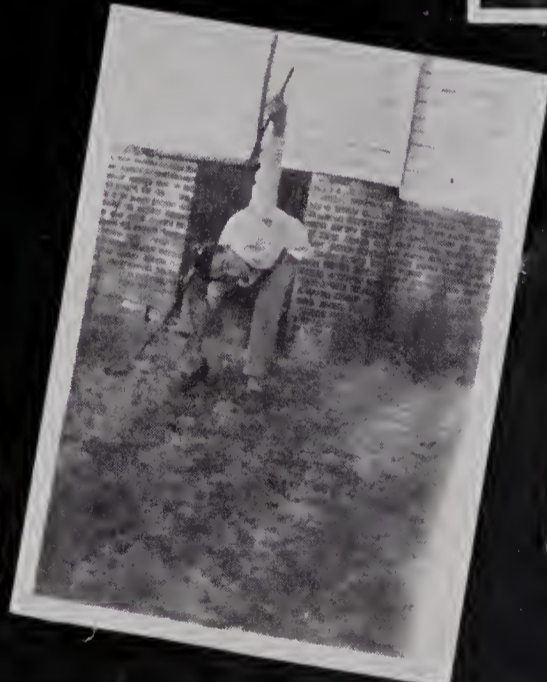
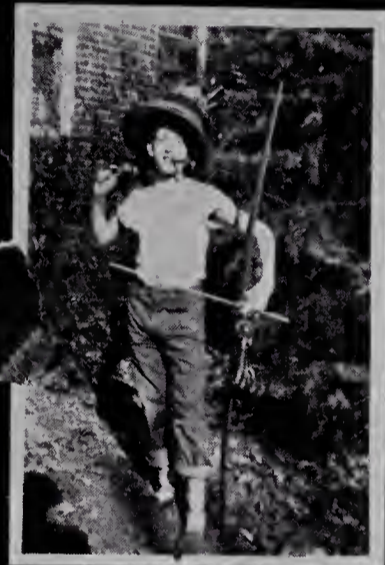
Frances West

Betty Lou Williams

Millicent Winstead

Jimmy Woodruff

Felix Yarboro



EIGHTH GRADE

Miss Kelly's Home Room

First Row: Beth Pardue, Jo Ann Darnell, Melinda Helton, Emma Lee Holbrook, Pat Cass, Mary Dudley, Jean Konkle, Rita Caudle, Clara Belle Tucker, Karen Sprinkle, Abbye Davis, Helen Graham, Deanna Stuart, Carole Brown, Phyllis Brown, Louise Laxton, Anne Hine.

Second Row: Betty Jean Prevette, Carrie Bet Smoot, Sandra Pennell, Jacqueline Miller, Martha Blevins, Nancy Martin, Elizabeth Ann Settle, Nancy Adams, Hilda Sloope, Mary Frances Hart, Betty Ann Parker, Betsy Ashby, Nancy Dixon, Barbara McLeod, Linda Ford, Mae Money, Betty Lou Wiles, Miss Jewell Kelly, Adviser.

Miss Steelman's Home Room

First Row: David Myers, Doris Blackburn, Patsy Guyer, Nancy Lyons, Linda Walker, Georgia Holcomb, Minnie Lou Atkins, Barbara Cooper, Sally Ray, Dorothy Lanning, Barbara Felts, Chris Glenn.

Second Row: Miss Eva Steelman, Adviser; Phyllis Vanhoy, Lottie Mae Hemric, Sara Jane Sheppard, Emelene Corder, Patsy Harris, Jerry James, Phillip Royall, Johnny Martin, Harry Smith, David Woodruff, Kedron Norman.

Mr. Yarborough's Home Room

First Row: Farrell Settle, Henry Jackson, Billy Bruce, Harold Jackson, Jim Edwards, Charles Walters, Tommy Holcomb, Kenneth Hudson, Bobby Carter, Sammy Elmore, Melvin Thompson, Eddie Carter, Tony Chipman, Billy Driver, Steve Long, Ray Luffman, Charlie Evans, Jim Thompson.

Second Row: Rex Judd, Jimmy Harris, Buddy Farrell, Roy King, Donald Cass, Oscar Reynolds, Jack Tatum, Cheslie Brinegar, Donald White, Grady Mickle, Colvin Hege, John Beale, Franklin Williams, Ted Hall, Ray Whitaker, Jakie Mullis, Mr. Bob Yarborough, Adviser.



9551





Louis Neaves
President

STUDENT COUNCIL



Clockwise: Mr. F. C. Schiebout, Adviser; Mary Martin, June Pruitt, Lyndon DeBorde, Gilbert Lowery, Phyllis Brown, Abie Harris, Delores Wagoner, Pat Graham, Treasurer; Polly Price, Vice-President; Elizabeth Harris, Secretary; Robert Driver, Joe Price, Shirley Helton, Emaline Mitchell, J. L. Lowe, Johnny Beale, Louis Neaves, President.

SPANISH CLUB

Seated: Edna Guyer, Pat Francis, Bob Holloway, Treasurer; Abie Harris, Wanda Tulbert, Lois Wagoner, Bettyjean Parks, Emaline Hayes. • *First Row Standing:* Carolyn Gentry, Bonnie Bowman, President; Zetta Lou Freeman, Secretary; Jean Bowman. • *Second Row Standing:* Polly Dudley, June Gentry, Sam W. Marshall, Bobby Steele, Parks McBride, Neal Mullis, John Atwell, Charles Ashby, Miss Eva Steelman, Adviser.



LATIN CLUB

First Row: Joe Price, Dick Hodel, Robert Pardue, Carol Stuart. • *Second Row:* Miner Flynt, Janet Walker, Nancy Swaim, Twinkle Jackson, Alyce Braxton, Jean Smitherman. • *Third Row:* Kay Farrell, Mary Martin, Sarah Boyles, Watana Owens, Vickie Franklin, Barbara Sale, Annie Gray Calhoun, Nancy Cockerham. • *Fourth Row:* Fred Eidson, Carol Guth, J. L. Lowe, Jr., Shirley Helton, Margaret Fletcher, Kitty Cranford, Polly Price, Wendell Guth. • *Fifth Row:* Glenda Lowe, Mary Ann Long, Mary Ann Laffoon, Gwen King, Linda Jennings, Betty Jean Holbrook, Felix Yarboro, Gilbert Lowery. • *Standing:* Miss Emma Cooke, Adviser; Jane Boyles, President; Larry James, Vice-President; Jackie Brown, Secretary; Janice Butner, Treasurer; Frances Russell, Program Chairman; John Davis, Reporter.



THE ELK STAFF

Edna Dillon *Editor*

John Atwell *Advertising Manager*

Nancy Gambill *Photography Editor*

QUILL AND SCROLL

Senior: Betty Wall, Margaret Cleary, Elizabeth Harris, Edna Dillon, Patsy Martin.
Standing: Pat Graham, President, Nancy Gambill, Mary Sue Chipman, Secretary.



THE ELK ANTLER STAFF

Elizabeth Harris *Editor-in-Chief*

Pat Graham *Art Editor*

Frank Young *Production Manager*



First Row: Bobby Steele, Fashion Editor; Pat Graham, Art Editor; Margaret Cleary, Assistant News Editor. • *Second Row:* Neil Mullis, News Editor; Mary Sue Chipman, Sports Editor; Zetta Lou Freeman, Assistant Feature Editor; Faye Payne, Exchange Editor; Betty Wall, Social Editor; Patsy Martin, Assistant Art Editor. • *Third Row:* John Henry Steele, Assistant Business Manager; Archie Tucker, Reporter; Ann Carter, Reporter; John Atwell, Assistant Editor; Eldon Parks, Business Manager; Ruthie Click, Feature Editor; Nancy Gambill, Fashion Editor; Edna Dillon, Reporter. • *Fourth Row:* Bill Barnette, Sports Editor; Frank Young, Production Manager; Fred Holcomb, Assistant Production Manager; Frank Chatman, Circulation Manager; Carl Benge, Reporter; Thomas Groce, Assistant Production Manager; Elizabeth Harris, Editor-in-Chief; Mrs. Adrian Nixon, Adviser.



BETA CLUB

First Row: Bonnie Bowman, Mary Lou Martin, Joyce Cochrane. • *Second Row:* Danny Park, Pat Graham, Secretary; Jean Bowman, Shirley Helton, Sabrilla Dobbins, Chaplain; Dixie Graham, Margaret Cleary, Polly Price, Louis Neaves, Carolyn Gentry, Patsy Martin. • *Third Row:* Mr. Joseph Watts, Adviser; Edna Dillon, President; Errol Hall, Sarah Boyles, John Hampton, Treasurer; Elizabeth Harris, Charles Edwards, Bertie Gentry, Carol Guth, Janet Walker, June Gentry, Bettyjean Parks, Emaline Hayes. • *Fourth Row:* Fred Eidson, Charles Ashby, Abie Harris, Vice-President.



MARSHALS

Sarah Boyles, Chief; Janet Walker, Emaline Hayes, Joyce Cochrane, Mabel Brinegar, Fred Eidson

DEBATING CLUB

Nancy Cockerham, Patsy Francis, Secretary-Treasurer; Emaline Hayes, Vice-President; Mr. W. R. Richardson, Adviser; Neil Mullis, President; Pat Windsor, Sylvia Martin, Danny Park, John Hampton.



BI-PHY-CHEM CLUB

First Row: Gilbert Lowery, Janet Burcham, Sarah Boyles, Pat Francis, Secretary; Betty Ellen Harris, Patsy Martin, Ann Durham, Mabel Brinegar, Carol Stuart. • *Second Row:* Bettyjean Parks, Reporter; Carol Guth, Mary Martin, Frances Russell, Dorothy Barker, Kitty Cranford. • *Standing:* Mickey Wagoner, President; Johnny Davis, J. L. Lowe, Jr., Treasurer; Emaline Hayes, Vice-President; Bobby Graham, Dickie Minish, Neil Mullis, Librarian; John Henry Steele, John Hampton, A. P. Alexander, Betty Thomasson, Polly Price, Margaret Shepherd, Mr. W. R. Richardson, Adviser.







FOOTBALL

First Row: Bobby Gentry, Manager; John Haynes, Bill Barnette, Larry James, Clyde Hayes, Abie Harris, Danny Park, Howard Hayes, J. L. Lowe, Jr., Miner Flynt, Coach Yarborough. • *Second Row:* Parks McBride, Manager; John Davis, Jimmy Billings, Nicky Shore, Jimmy Price, A. P. Alexander, Bobby Holloway, Robert Driver, Eldon Parks, Bobby Joe Darnell, Melvin McBride, Assistant Coach Eldridge. • *Third Row:* Frank Chatman, Manager; Mickey Wagoner, Louis Neaves, J. B. Gentry, Neil Mullis, Billy Francis, John Atwell, Joe Jurney, Jimmy Rogers, Rex Masten, Mr. Jim Hayworth, Athletic Director.

SCORES 1951

Sept. 15.....	Granite Falls	0.....	Elkin 31
Sept. 21.....	Valdese	27.....	Elkin 6
Sept. 28.....	Mineral Springs	26.....	Elkin 20
Oct. 5.....	Boone	0.....	Elkin 7
Oct. 12.....	Franklin	6.....	Elkin 45
Oct. 26.....	Sparta	0.....	Elkin 48
Nov. 3.....	Boonville	0.....	Elkin 25
Nov. 9.....	Jonesville	12.....	Elkin 13
Nov. 16.....	Hudson	7.....	Elkin 27
	Totals	78.....	222



COACHES

Mr. Claude Eldridge *Assistant Coach*
 Mr. Jim Hayworth *Athletic Director*
 Mr. Bob Yarborough *Head Coach*

CHEERLEADERS

SENIORS

Ann Osborne, Elizabeth Harris, Pat Graham, Chief; Edna Dillon, Ruthie Click.



JUNIORS

Angelene Holbrook, Wanda Tulbert, Shirley Helton, Janet Walker, Sarah Boyles, Shirley Lawrence, Emaline Mitchell, Bettie Jean Holbrook, Janet Burcham.



SOPHOMORES

Mary Lois Smith, Phyllis Maines, Jackie Brown, Janice Butner, Ellen Poplin, Sylvia Martin, Jane Boyles, Edith Ray, Pat Windsor, June Pruitt.



FRESHMEN

Nancy Swaim, Josie Lee Irvin, Lorene Tucker, Shelby Jean Couch.





GIRLS' BASKETBALL

First Row: Frances Russell, Ruthie Click, Ann Osborne, Janet Walker, Pat Graham, Zetta Lou Freeman.

Second Row: Bettyjean Parks, Polly Price, Carol Guth, Jackie Brown, Jackie Sloop, and Miss Jewell Kelly, Coach.





BOYS' BASKETBALL

Kneeling: Joe Jurney, Louis Neaves, Fred Eidson, Mickey Wagoner, Murphy Osborne.

Standing: Mr. Claude Eldridge, Coach; Bill Barnette, John Henry Steele, Billy Francis, John Atwell, Danny Park, J. L. Lowe, Jr.



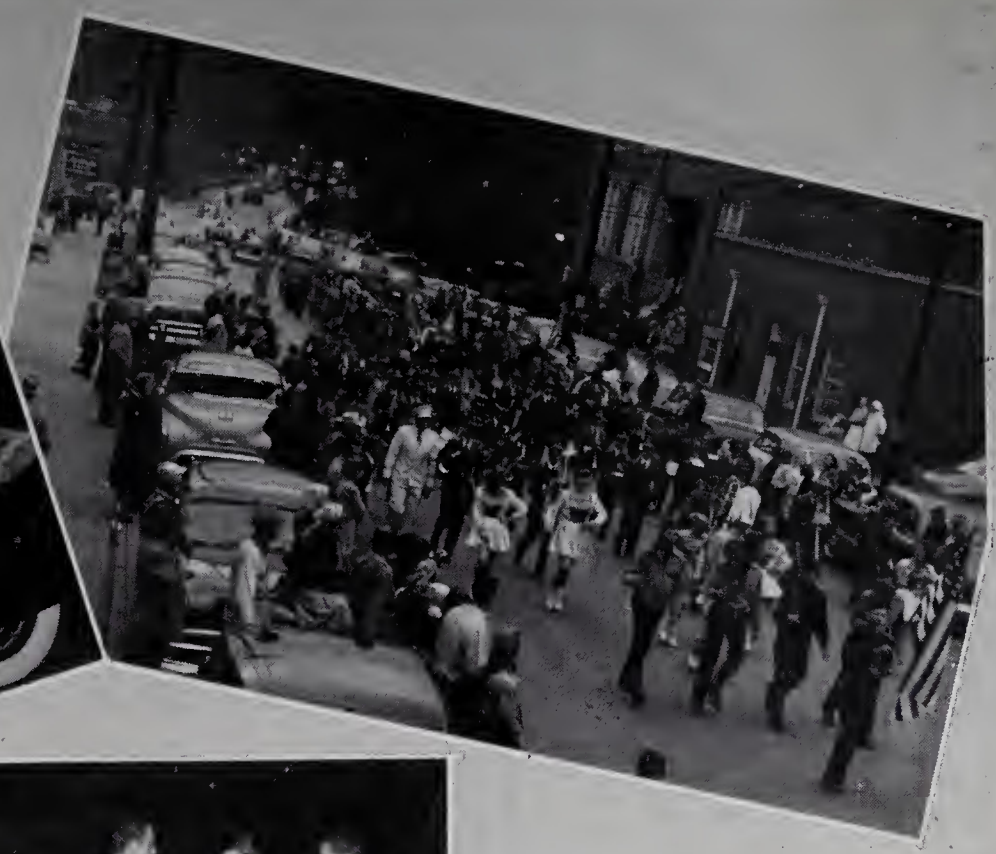


BASEBALL

First Row: Johnnie Davis, Robert Driver, Howard Hayes, Murphy Osborne, J. L. Lowe, Jr., Archie Tucker, Frank Young, John D. Haynes, Danny Park, Sam Harris.

Second Row: Mr. Vernon Price, Coach; Frank Chatman, Manager; John Henry Steele, Charles Cockerham, Billy Francis, Bob Creed, R. C. Osborne, C. E. Councilman, Bill Barnette, Mickey Wagoner, Nicky Shore, Manager.





Vestal Cash Grocery

Quality Western Meats
Frozen Foods — Fresh Vegetables

WE DELIVER

929 Bridge Elkin, N. C.
Phone 671

Wolfe Brothers

FURNITURE

Phone 3-F-23

State Road, N. C.

G & B Oil Company

E. C. Boyles

Wholesale and Retail

Phone 370

Reeves, Lyric, State Theatres

The "Showplace" of Surry County



Movies Are Still The World's
Finest Entertainment

Compliments of

Elkin Leather Company



"Everything in Leather"

Elkin, N. C.

Compliments of

Yadkin Valley Packers, Inc.

Dealers in

Meats—Sausages—Frozen Foods

Elkin, North Carolina

The North Wilkesboro
Coca-Cola Bottling Co.



Hinshaw Hardware Co.

Phone 143 — Elkin, N. C.

Servel, The Motorless Refrigerator
Necchi Sewing Machines

The Better Home Store

Amana Home Freezers

Isenhour's Jewelry

Gifts that Last

Main Street, Elkin, N. C.

Compliments of

J. M. Franklin



Architect and Engineer

Elkin, N. C.

J. H. Beeson
Mutual Insurance Service



109 East Main Street Phone 17

COMPLIMENTS OF

Boonville
Cleaners and Laundry



Brown's Machine Co.
Electric and Acetylene Welding



PHONE 237



Compliments
of

White Swan Laundry



Compliments of

J. C. Penney Co.

108 E. Main Elkin, N. C.

Phone 139

Compliments of

Thomasson Florist

Flowers for All Occasions

Elkin, N. C.

Phone 323

Compliments of

Ed Snyder's

R.C.A.

Philco

Bendix

Hotpoint

Compliments of

Lawrence Dry Cleaners

Phone 187

Elkin, N. C.

Western Auto



Everything for the
Auto and Home Appliances

Compliments of

Holcomb Bros., Inc.

Plumbing and Heating

Elkin, N. C.

Compliments of

H. C. Burcham and Son, Inc.

General Contractors

Elkin, N. C.

1120 Elk Spur Extension

Phone 61-W

Cato's

Your Friendly Ladies' Wear Store

Cato's - Elkin



For High Quality

MEATS and GROCERIES

F. A. Brendle & Son, Inc.

Ratledge Service Station

Oil and Gas that Saves You Cost
From Tank Car to Car Tank

Elkin, N. C.

COMPLIMENTS OF

**Harris and Wagoner
Men's Store**



Elmore's

Mutual Insurance Agency

The Dividend Agency



111 Main St.

Phone 738

Compliments of

Yadkin Finance Corp.



"Home Company For Home Folks"

Compliments of

Gwyn Insurance Agency, Inc.

SERVICE and SECURITY



Phone 258

Elkin, N. C.

Compliments of

The Hotel Elkin

Carolina-Tennessee

Coach Co.

Phone 462-J

Charter buses anywhere in the
United States.

North Wilkesboro, N. C.

Parks Shoe Center

"Your Comfort Is Our Business"



Phone 802-J

K & B Service Station



Sinclair Products

Goodyear Batteries and Tires

Washing and Greasing

Compliments of

Pepsi-Cola Bottling Co.

Phone 590

Elkin-Jonesville, N. C.

Compliments of

Butner and McLeod Motor Co.

"Your Friendly Ford Dealers"

Elkin, N. C.

Triangle Super Service
Cecil Crouse, Owner

J & J Oil Company
Distributors

Wholesale
Fuel, Kerosene, Gasoline
Intersection of Highway 67-21

Phone 69 Jonesville, N. C.

"Our name is our motto"

Watches — Diamonds — Jewelry



Carl W. Steele Jewelry Store

Elkin, N. C.

Congratulations and Best Wishes

To the Class of 1952

Elkin-Jonesville
Building and Loan Association

COMPLIMENTS
OF

Minute Grill



PHONE 581

Compliments of

Rose's 5-10-25c Store
Clarice Oakley, Manager

No. 108

Elkin, N. C.

Compliments
of

Kennedy Auto Supply



Elkin, N. C.

Compliments of

Dainty Lady Beauty Shoppe



Phone 152

INSURANCE — REAL ESTATE

Hugh A. Royall



Phone 111

Yadkin Auto Sales

Dodge, Plymouth, Dodge Trucks



Phone 32

Whitener Lumber Company

Complete Line of Building Material

Phone 2-F-11

State Road, N. C.

Congratulations and Best Wishes
To the Class of 1952

**Veteran
Plumbing and Heating**

**T. A. Finley, Distributor
GULF OIL CORPORATION**



Phone 11

Elkin, N. C.



Hensel Lumber Company

Elkin, N. C.



Compliments of

Surry Hardware Company

Quality and Service

Phone 38

Elkin, N. C.

Griffin Sporting Goods

Elkin, N. C.



MacGregor — Goldsmith
Athletic Equipment
Office and School Supplies
Gift Items

Compliments of
Lucy Gray's Beauty Shoppe



Phone 380

Elkin, N. C.

F. W. Chevrolet, Inc.

Elkin, N. C.

Sales and Super Service

Night Phone 775 — Day Phone 255

WRECK SERVICE

Compliments of

Elk Pharmacy

Phone 310

Elkin, N. C.

Always at Your Service

Coke's Place

Phone 676

Pit Barbecue

Plates and Sandwiches

Soft Drinks

Turner Drug Co., Inc.

Elkin, N. C.

George E. Royall

Edwin Royall

Henry Dillon

For the Best in Fountain Service

Elk Printing Co., Inc.

Phone 96

Elkin, N. C.

QUALITY PRINTING



Publisher of "Elkin Tribune"

Compliments of

**Blackwelder
Furniture Company**

The Home of Quality Furniture
For Less Money

Open Till 7:30 P. M.—Phone 549

Jonesville, N. C.

Snow Motor Company

136 So. Bridge St.

Phone 613

Sales — Buick — Service

ROSE & DAY, INC.



Pontiac Sales and Service

24-Hour Wrecker Service



Day Phone 345

Night Phone 10-F-22

Abernethy's Pharmacy

"A Good Drug Store"



Elkin, North Carolina

The Rexall Store

COMPLIMENTS OF

THE BANK OF ELKIN

ELKIN, N. C.



Member Federal Deposit Insurance Corporation

PHONE 80

Elkin Furniture Company

Manufacturers of

Bedroom

Furniture

REDDY KILOWATT

"Your Electrical Servant"



Duke Power Co.

COMPLIMENTS
OF

**BRENDLE
CASH WHOLESALE**

INCORPORATED



J. D. BRENDLE

The Basketeria, Inc.



FRESH FRUITS
AND
VEGETABLES



101 Main Street Elkin, N. C.

Compliments of

Cash & Carry Store INCORPORATED



WHOLESALE
AND
RETAIL



Elkin, N. C.

L. G. BALFOUR COMPANY

Service—Quality—Value—Beauty

Class Rings and Pins
Commencement Invitations
Club Insignias
Memorial Plaques
Diplomas
Personal Cards

Represented by Mr. John Beale, Jr.

P. O. Box 97
Johnson City, Tennessee

GRAHAM & CLICK

High Quality School Supplies



ELKIN, N. C.

Shell Super Service

TOMMY JOHNSON, *Manager*



713 North Bridge Street

Your Service Center

COMPLIMENTS
OF

Martin's Bakery



DOUGHNUTS



FRIED PIES

COMPLIMENTS OF

Spainhour's

**A
Modern
Department Store**

ELKIN, NORTH CAROLINA

WHITE BROTHERS

Concrete and Cinder Blocks

Phone 627

Well, Road and Drain Tile

Steel Windows

All Kinds of Building Material



Located just out of Jonesville on the
Boonville highway.

Compliments of

Klondike Farm

Elkin, N. C.

Tops In Milk and Dairy Products



Fine Cows Produce Fine Milk

CHATHAM

GRILL

Lower Floor

Y M C A



ELKIN, N. C.

SUPER TIRE SERVICE

A. Dan Hudspeth, Owner

Factory-Method Recapping

Wheel Aligning and Balancing

Firestone Tires and Tubes

Willard Batteries

Phone 246

689 North Bridge Street

Elkin, North Carolina

Carolina Bloomer Company

Elkin, N. C.

Rayon and Nylon
Non-run Tricot Panties



**BELK - DOUGHTON
COMPANY**

CLOTHING FOR ALL OCCASIONS

ELKIN, N. C.

COMPLIMENTS OF

**REINS STURDIVANT
FUNERAL HOME**

NORTH WILKESBORO, N. C.

FOR FARMING EQUIPMENT

SEE

Surry Tractor Co.

COMPLIMENTS OF

**Mathis & Morrison
Furniture Co.**

ELKIN, N. C.

Compliments of

Sinclair Refining Co.

Elkin, N. C.

Stimpson Motor Service
West Elkin Phone 61-R

☆

FIRST CLASS WORK

Compliments of the

Valley Drive-In Theater

For the best in entertainment drive out to the Valley Drive-In Theater where there is always a good show rain or moon!

Compliments of

**HARRIS
TEXACO SERVICE**

Goodrich tires, batteries, and accessories

Marfak lubrication, washing, polishing and waxing

620 North Bridge St.
Phone 811

Compliments of

REDMON'S STUDIO
INCORPORATED
ELKIN, NORTH CAROLINA

☆

"Photography in the Modern Manner"

Chatham Blankets



Chatham Manufacturing Company

Elkin, North Carolina



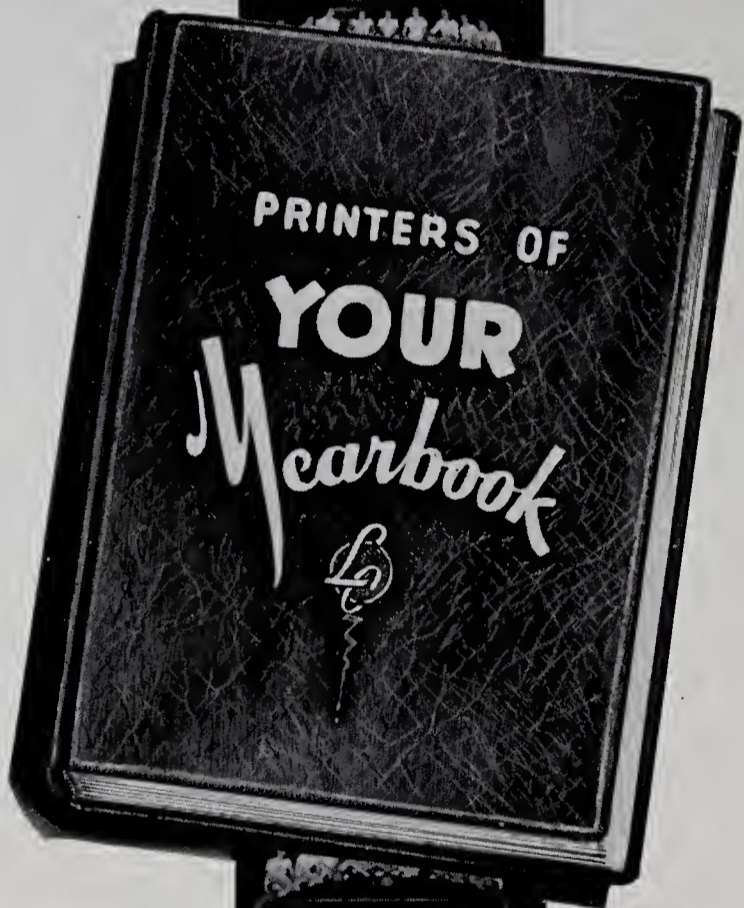
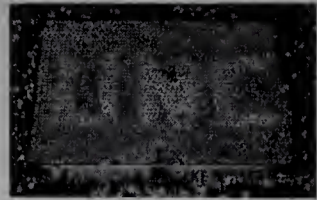
Devoted to

Elkin's Progress



SPONSORS

C. E. Chappell	Crissman Clothiers
Alexander & Neaves	Evan Brown
Biltmore Grill	Dr. J. H. Howard
Elkin Valley Grocery	W. M. Wall
Dr. J. M. Hall	Floyd Z. Stanley
Wilkes Transportation Co.	Auto Parts Co.
Dr. J. W. Jolley	Dr. B. H. Harding
Dairy Queen	Dr. R. M. Cooke
Roger's Shoe Shop	Al Hinshaw
Elkin Barber Shop	Carolina Ice & Fuel Co.
E. F. Harris, Jr.	Carl Rose
Dr. Seth M. Beale	Dr. V. W. Taylor
Tom's Studio	Dr. Lin Fincannon
Roy Bates Radio Shop	J. I. Cockerham
Master Craft Shoe Shop	Dr. Claude A. McNeil, Jr.
Marlin's Esso Service	Dr. Olivia Abernethy
State Road Hardware	Dr. F. R. Fleming
Hall-Knott & Edwards	Dr. E. G. Click
Dr. J. A. Harrell	A. O. Bryan
Dr. R. B. Harrell	Dr. H. L. Johnson
Shorty Collins	J. M. Speas
Kat Burcham	Mary's Beauty Shop
Doug Darnell	Hayes & Speas Funeral Home



LASSITER CORPORATION

CHARLOTTE, NORTH CAROLINA

School Publications



