

Mount Airy

INCLUDING THE TOWNS OF DOBSON AND PILOT MOUNTAIN

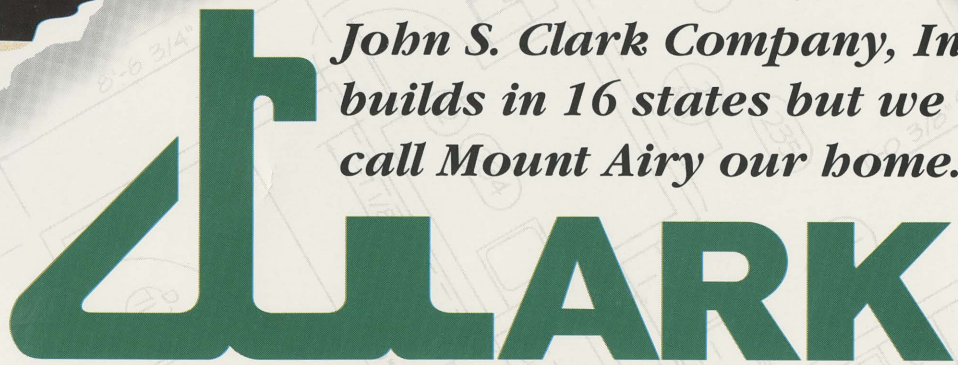


Cover design by Lois Tifley

JOHN S. CLARK COMPANY
GENERAL CONTRACTORS

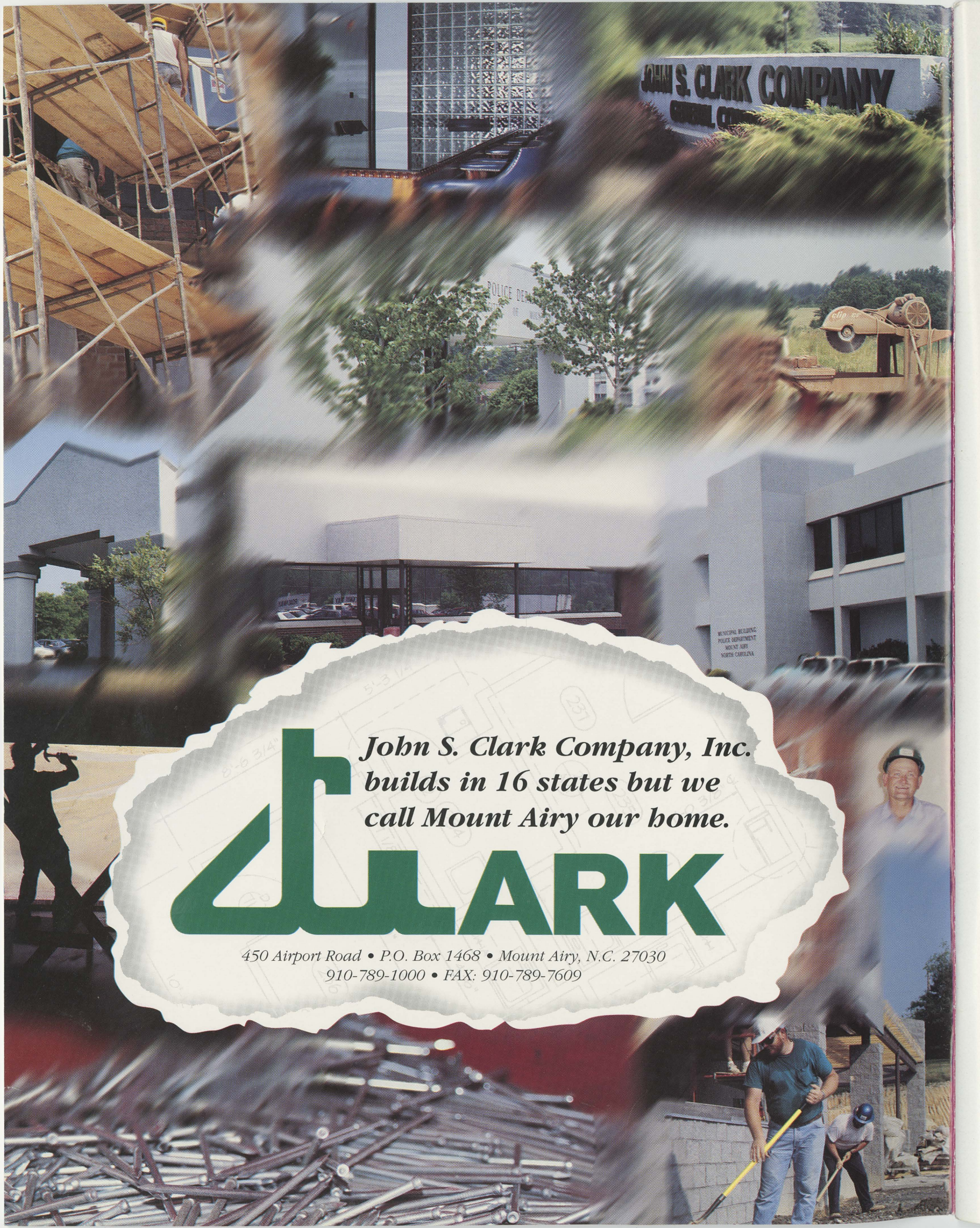
POLICE DEPARTMENT

MUNICIPAL BUILDING
POLICE DEPARTMENT
MOUNT AIRY,
NORTH CAROLINA



*John S. Clark Company, Inc.
builds in 16 states but we
call Mount Airy our home.*

450 Airport Road • P.O. Box 1468 • Mount Airy, N.C. 27030
910-789-1000 • FAX: 910-789-7609



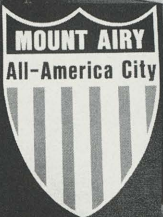
INDEX

Welcome To Surry County	4
Mount Airy or Mayberry	8
The History of Surry County	11
Recreation.....	16
County Map.....	22
Autumn Leaves Festival	23
Making A Home in Surry	24
Dobson	32
Transportation	34
Accommodations.....	35
Educational Opportunities	37
Local Statistics	42
Pilot Mountain.....	45
Restaurants.....	46
Emergency & Medical Services	47
Economic Diversity	51
Outlets	58-59

*A publication of The Mount Airy News for The Greater Mount Airy Chamber of Commerce.
Editor, Angela Leonard, Mount Airy News Staff*

Experience Mount Airy!

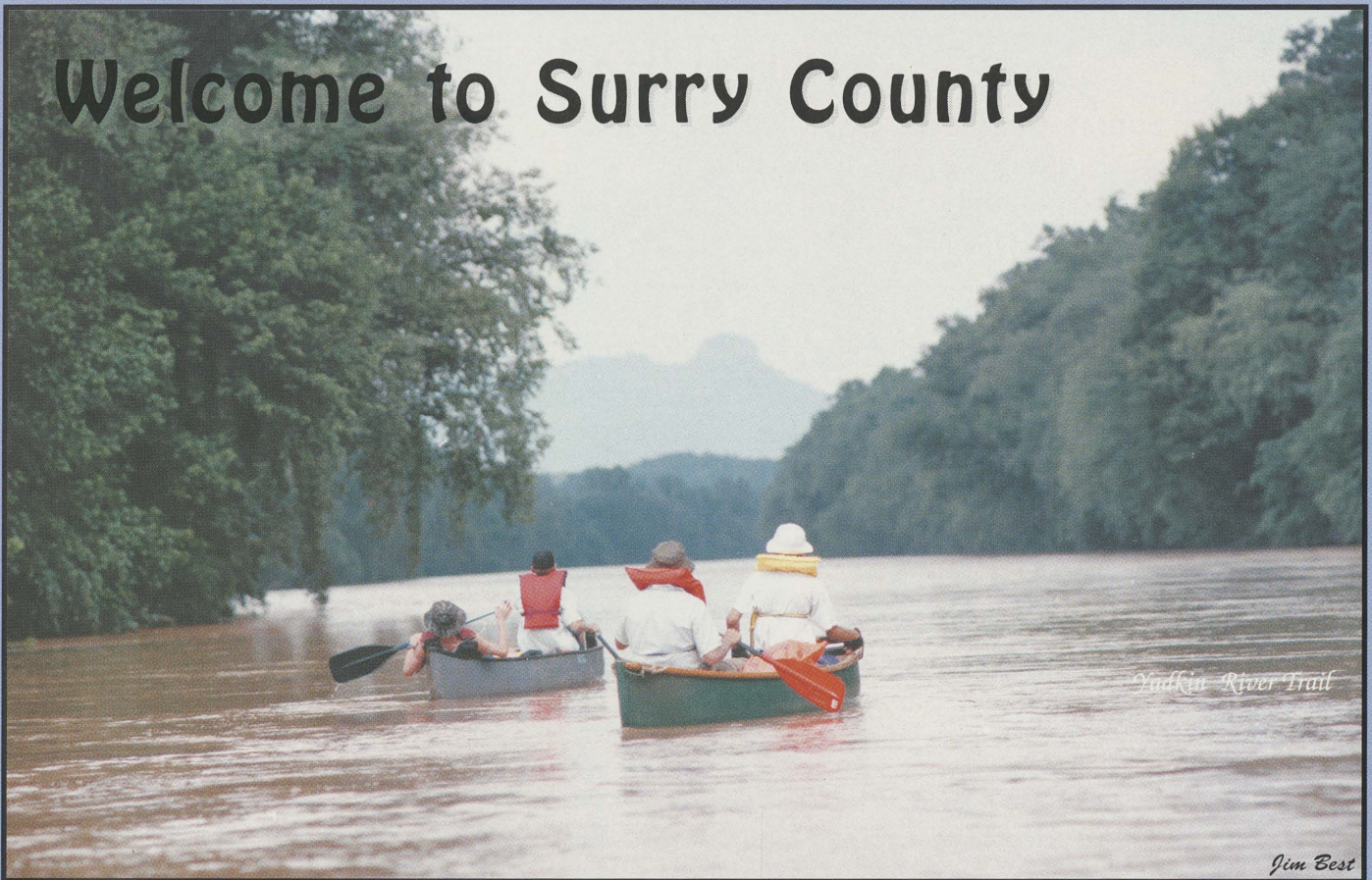
- Historic Neighborhoods • Museum of Regional History
- World's Largest Open-face Granite Quarry
- Home of Andy Griffith and the fabled Mayberry
- Hundreds of charming stores in our downtown shopping district
(including art galleries and antique stores!)
- Local theater • Recreation • Thriving industries
- Excellent education opportunities • Many fine places of worship



Come spend time with us. You'll like what you see!

300 S. Main Street, Mount Airy 910-786-3501

Welcome to Surry County



Nestled amid the foothills of the Blue Ridge Mountains in Northwestern North Carolina, Mount Airy welcomes visitors with the magical lure of a small town, yet with feet firmly planted in the modern world.

The hometown of well-known television and movie actor Andy Griffith, Mount Airy still boasts much of the charm upon which he based the town of Mayberry in the long-running television series, "The Andy Griffith Show." But that claim to notoriety has not locked the town in the past or limited its appeal. In Mount Airy it's still possible to recapture a by-gone era's best qualities without trading the benefits of modern day life.

The town blends historical homes, a scenic countryside and a cozy downtown brimming with creative shops with shopping centers and industrial parks that are home to modern textile, plastics, furniture and appliance industries. Its inherent charm is enhanced by active restoration efforts in the historical districts and a thriving downtown business community. These characteristics joined others in earning the city a rank of 36th on the list of The 100 Best Small Towns in America in 1995. A year earlier, the town of some 8,100 residents was also selected, after stiff competition, as an All-America City.

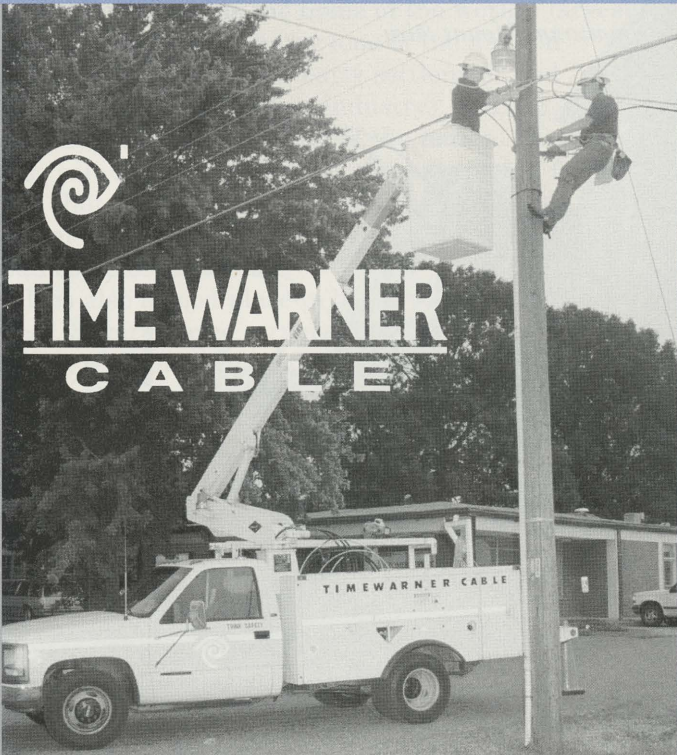
Those accolades, however, are only labels --

although well-deserved ones. They are recognition of the town's attributes, from the neighborliness of friendly greetings on downtown sidewalks to the availability and quality of services and the range of employment options and opportunities.

The largest municipality in Surry County, Mount Airy, serves as a shopping and employment center for the surrounding county and adjoining counties in North Carolina and Virginia. Its industrial facilities draw thousands to the town for work, and many of them linger to shop before returning to the areas they call home. At the same time, the town serves as a bedroom community for those desiring small-town lifestyles for their families, but choosing to work in larger, metropolitan areas to the south.

From two interstate highways to the information superhighway, Mount Airy is closely linked to the major metropolitan areas in the Southeast. U.S. 52 and Interstates 77 and 74 connect the area by four-lane highway to Winston-Salem, High Point, Greensboro, and






TIME WARNER
CABLE

*Your Hometown Connection
 To The World!*
1-800-247-9112

Everything You Look For In A Bank

**SURREY BANK
 & Trust**

**Local Decisions!
 Local Officers & Employees**

**Locally Owned!
 Local Board of Directors**

Corner of W. Pine Street and Franklin Road
 910-719-2310

**Propane
 Fuel Oil
 Appliances
 Installations**

**Hwy. 268 East
 Pilot Mountain, NC
 (910) 368-3678
 Main Office- Elkin
 (910) 835-3607**

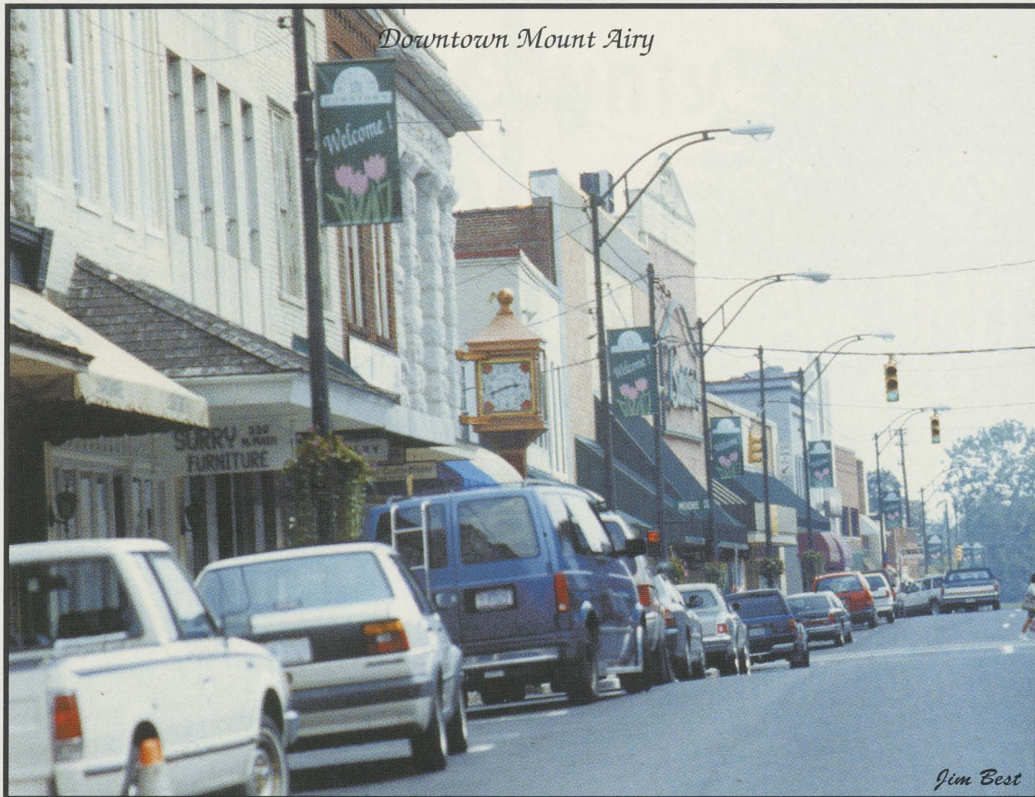


Quality Service Since 1930.

Charlotte. Even Raleigh is less than 150 miles away along four-lane highways. Industrial development in these areas provides not only jobs, but support services for the industries that choose to locate in Mount Airy and Surry County. On-line communication services link the area even more quickly with these same areas as well as the rest of the nation.

Any town, however, is more than a place to work or a place to sleep. For many people, Mount Airy is both, with progressive schools, effective law enforcement, and modern public services able to support additional growth. At the same time, a conscious effort has been made to preserve the unique qualities of small town life that so many people seek and enjoy, be it historical housing or the friendliness of neighbors who would only be

Downtown Mount Airy



Jim Best

casual acquaintances in a faster-paced community.

Residents of the area who choose to live and work here have a range of employment options as the coun-



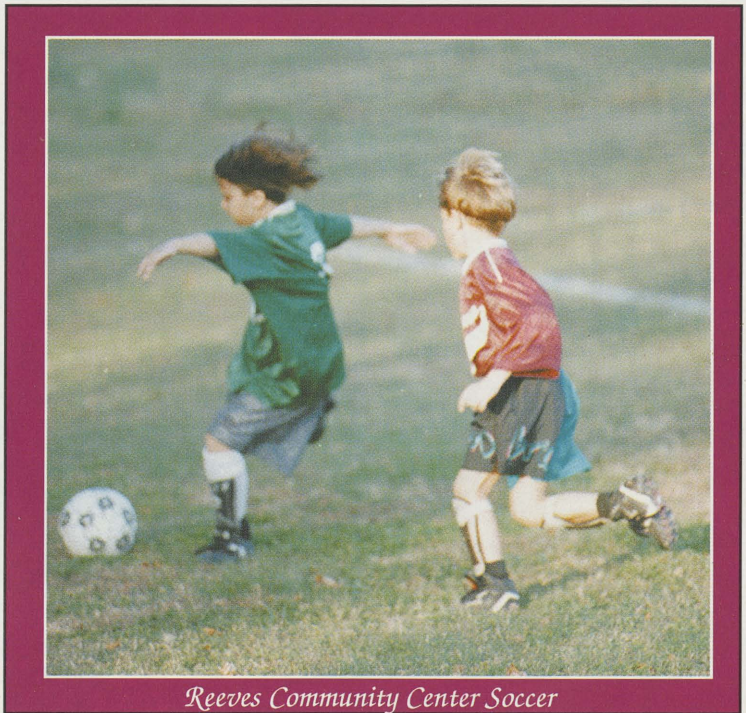
Jim Best

Puckett Cabin on the Blue Ridge Parkway

ty is known both as the home of the world's largest open-faced granite quarry (one of the natural resources that led to its early settlement and which remains a thriving industry), and the hosiery and toaster capital of the nation. Diversity also can be found in smaller manufacturing facilities that run the gamut from printing textiles for infant wear to producing payment books for companies across the U.S.

It is also a good place to begin your own business. Several large corporations call Mount Airy home, with businesses that have grown to reach across the state. Downtown's diverse shopping district is still growing, with room for new businesses as well, and provides a market for the region's creative talents with galleries and craft shops.

When not at work, there is plenty to do in the county and nearby. There are indoor and outdoor public pools, and a complete recreation facility in Mount Airy, community-based youth recreation programs throughout the county, and other private facilities as well. Those seeking to commune with nature or the past may drive down U.S. 52 to Pilot Mountain State Park or Horne Creek Living Historical Farm, or travel east along N.C. 89 to Hanging Rock State Park in nearby Stokes County. For a day's driving pleasure as well as historical stops along the way, the Blue Ridge Parkway is only 10 miles north of Mount Airy off U.S. 52, offering desti-



Reeves Community Center Soccer

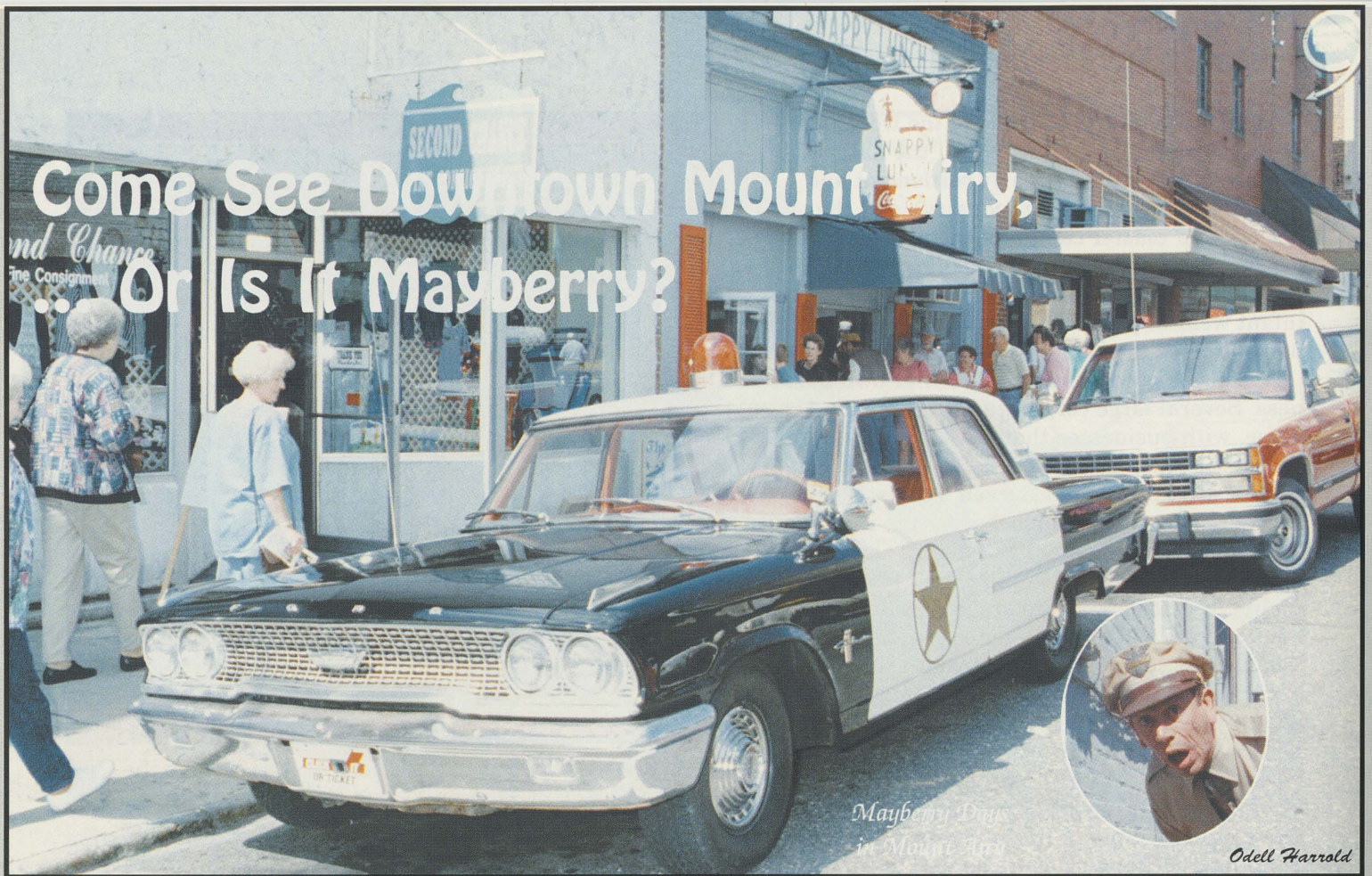
nations to the north and southwest as it links the Great Smoky Mountains and the Shenandoah.

Whatever your reason for coming to Mount Airy, you'll find a warm, friendly community that is always ready to welcome those who decide to make the area their home -- for an hour, a day, a week, or a lifetime.

All Roads Lead To Community Bank

No matter where your travels in the county may take you, there is a **Community Bank** near by.

No other bank has as many Surry County locations as we have - Four Convenient Locations - with Local Decision Making - & - Saturday Banking - Makes **Community Bank** the smart choice!



Come See Downtown Mount Airy, ... Or Is It Mayberry?

*Mayberry Days
in Mount Airy*

Odell Harrold

When visitors come to Mount Airy, either on business, as tourists, or to visit family and friends, a frequent request is "Take me to Mayberry." The lure of small town America still appeals to people who want to find the place where everyone was a neighbor and the most serious threat to peace and serenity was when Ernest T. Bass visited town with a sack filled with rocks.

Andy Griffith grew up in Mount Airy, in a small frame house on East Haymore Street, and the town served as the model for the well-known town of television lore on "The Andy Griffith Show." Even today some of the familiar haunts of Mayberry's residents have their real-life equals in Mount Airy.

Mayberry fans can get a start on their visit to Mount Airy with a stop at the Visitors Center on North Main Street, where nearly half of the main floor is dedicated to an Andy Griffith museum, with memorabilia from Mayberry and from Andy Griffith's more recent venture, "Matlock."

Fans will also want to stop by two of Mayberry's favorite haunts -- The Snappy Lunch, home of the pork chop sandwich, and Floyd's Barbershop, where gossip was thicker than the hair on the floor. Those businesses are located on North Main as well, in the central business district, side-by-side. During tourist season the line at the Snappy Lunch often runs out onto the sidewalk, but they never seem to run out of pork chops, as long as you don't run out of patience. Next door at Floyd's, you can have your picture made in an old-time barber chair and check out the gallery of visitors on the wall.

Mayberry collectors will also want to roam the streets and stop in at the galleries and gift shops. There are Mayberry items as well as original paintings of scenes around the area that Andy Griffith may have enjoyed as a boy -- especially Pilot Mountain, which was referred to as Mount Pilot on the television show and was the frequent destination of short, out-of-town trips.

True, dyed-in-the-wool Mayberry fans will also want to return for Mayberry Days in late September when much of downtown turns into a festival of Mayberry reincarnate and the annual dinner meeting of The Andy Griffith Show Rerun Watchers Club is held in town. Fans recreate some of Mayberry's famous characters -- such as Barney Fife, Otis the town drunk and Ernest T. Bass complete with sack -- and actors from the original show are special guests. There is also a Mayberry Patrol Car, around town most of the year but prominently displayed that weekend. At the Andy Griffith Playhouse, there are checkers on the lawn, arts and crafts, food, and guided walking tours of downtown "Mayberry."

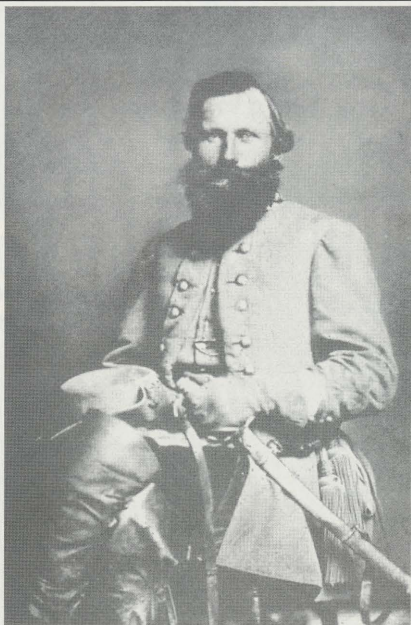
Whenever you're looking for Mayberry, you'll be able to find it in Mount Airy -- in small doses or large -- every day of the year.

"Laurel Hill"

Birthplace and
boyhood home of
J.E.B. Stuart

5 Miles North
Of Mt. Airy On
N.C. 104

- Homeplace
- Self-guided walking tours
- Annual encampment



J.E.B. Stuart

Maj. Gen. of the calvary under Gen. Robert E. Lee

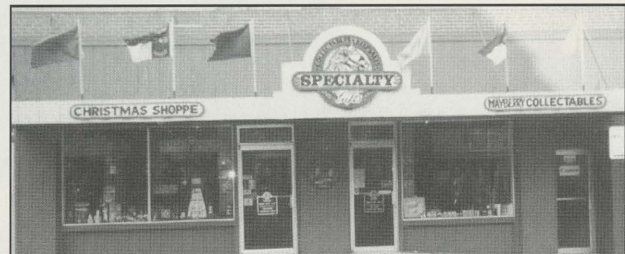
J.E.B. Stuart Birthplace, Inc.

P.O. Box 240
Ararat, VA. 24053
540 - 251-1833



Tax Exempt Organization For Donations 501-C-3.

The Mayberry Collectors SPECIALTY Center



SPECIALTY GIFTS

140 N. Main Street • Mt. Airy, NC 27030

(Across from Snappy Lunch)

Call 1-800-551-7970 for our
FREE Mayberry Catalog

Moving to the area? Call us first.

Soon, you'll be meeting new neighbors and making new friends. At Centura, we look forward to being both. We're ready to talk with you about your individual financial needs. From checking and savings accounts to home loans and insurance, Centura can help make your move a little easier.

In fact, you can take advantage of Centura's personal service **before** you pack your first box. Just call our Mount Airy financial center at (910) 789-5511 or our Pilot Mountain financial center at (910) 368-6000 to set up your accounts or learn more about the variety of services we offer. And ask about convenient banking at our ATMs at each branch and in the Wal-Mart located at 2241 Rockford St., Mount Airy. We'll help you take care of your financial needs today so you can focus on the "challenge" of moving tomorrow!



Call a Centura Money Manager today!

 **Centura**
The Money Managers®

<http://www.centura.com>
email@centura.com



501 North Main Street • Mount Airy, NC 27030 • (910) 789-5511
800 South Key Street • Pilot Mountain, NC 27041 • (910)368-6000

Centura Bank. Member FDIC.



Progressive Technologies

The Battery Solutions People



MANAGEMENT TEAM



PRODUCTION FACILITY

331 Shelly Brook Drive • Pilot Mountain, NC • 910-368-1375
Progressive Technologies Supports Economic Development

Our Past Lives On Everyday

Whether it is a historical marker by the side of a winding county road, pointing out the significance of a special place in time, or a gracious turn-of-the-century home in Mount Airy decorated for the holidays and open for tours, the past lives on in Surry County.

First settled in the early 1700s, the greater Mount Airy area has had nearly 300 years to develop its own unique culture and heritage -- one which it simultaneously preserves and enriches today.

While embracing modern technology and a farsighted economic development effort, the area has managed to maintain a sense of its roots and their importance to the future. That reverence for the past has helped preserve many concrete links to the past with such facilities as Horne Creek Living Historical Farm and a number of historical homes in the city and county.

One of the earliest historical references to the area was in 1729, when William Byrd visited the area and noticed the unique formation of Pilot Mountain. Twenty years later, early mapmakers named the area "The Hollows" in reference to its protected status within the encircling ring of mountains.

Surry County was formed in 1771, and named for Lord Surrey, a member of Parliament who protested the taxes levied on the colonists by the British. The county was home to farmers and tradespeople until 1775, when granite was discovered to the east of The Hollows.

The center of trade in The Hollows developed around the plantation of High Sheriff Martin Armstrong along the Ararat River on what is now Hamburg Street. In 1801, the plantation was sold to a Virginian, Thomas Perkins, who christened his new home with the lyrical name of Mount Airy. The surrounding settlement gradually took on that name as



Horne Creek Living Historical Farm

well, as the area grew into the county's largest municipality.

Shifting of county lines with the creation of new counties out of Surry caused the county seat to be moved twice by the mid-1800s. In 1850, the final shift put the county seat where it remains today -- in Dobson, a small settlement named for a prominent politician, William Polk Dobson. A small town grew up around the courthouse square, and the original courthouse, completed in 1853, stood until 1916 when it was replaced by the current structure.

The Civil War passed quietly for Surry County, noticed by the loss of fathers, sons and brothers who went away to war and never returned. No battles of note were fought within the county; however, annual events in nearby Patrick County, Va., at the birthplace of Confederate General J.E.B. Stuart provide a glimpse into that time period with an encampment and battle reenactments.

Until 1888, the area's residents were largely farmers who traveled to Mount Airy to trade or seek professional assistance. That year, the railway made its way out of the south to Mount Airy, and a new age of industrial and commercial development began. Coming to serve the granite quarry, the railway also provided easier transportation and a wider market for

the timber growing on the mountains and hills and the area's farming economy found a new outlet as well. The first manufacturing began at that time with furniture and tobacco factories. Textiles, too, took root in the town.

The rich heritage provided a fertile atmosphere that has long drawn people to the area and contributed to producing talented native sons and daughters as well.

One of the county's historical markers notes the area in White Plains where Eng and Chang Bunker, the first well-known pair of Siamese twins, made their homes after retiring from P.T. Barnum's sideshow in the 1800s. They raised large families and are buried there, and the county is still home to many of their descendants.

In more recent times, the unique musical heritage of the area, where traditional mountain and bluegrass music have long had a stronghold, has produced bluegrass great Tommy Jarrell and country music singer Donna Fargo ("The Happiest Girl in the Whole U.S.A."), both of whom once called the area home.

The past is more than a rich heritage on which to base the future. It survives in many ways through active groups and dedicated foundations that make possible the preservation of not only the area's history, but actual links to the past that are as easy to find as the Snappy Lunch on Main Street or the old log tobacco barns that still dot the countryside throughout Surry County.



Mount Airy Museum of Regional History



- Outdoor swimming pool
- Fax machine
- Meeting Room facilities
- Free HBO & ESPN
- Free local telephone & color tv with remote
- Executive suites with Whirlpool
- Valet services
- Much, much more!



2136 Rockford Street, Mount Airy, NC 27030
910- 789-2000

Cross Creek Country Club

*Championship Golf
Tennis
Swimming
Dining*

Greenhill Road, Mount Airy 910-789-5193



Gertrude Smith House

Angela Leonard

We're More Than
A Bank. We're Your
Neighbors.

BB&T

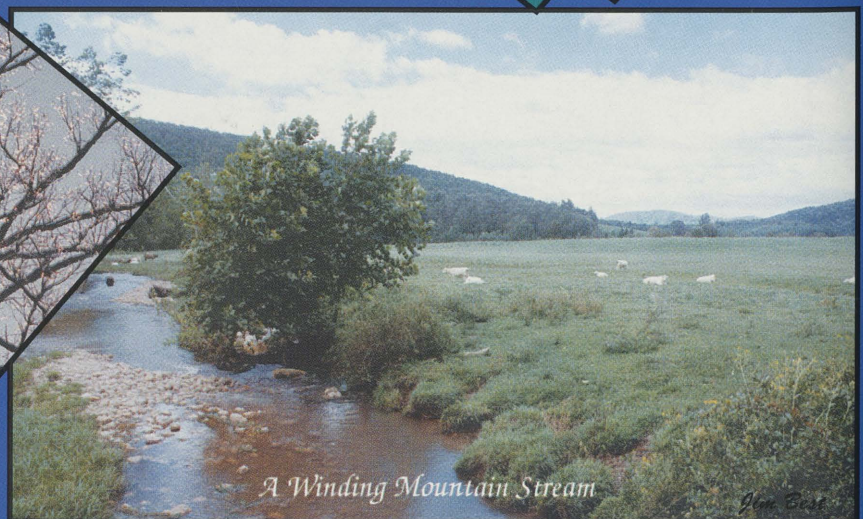
You can tell we want your business.

Member FDIC.

The Place To Be Any Day ..

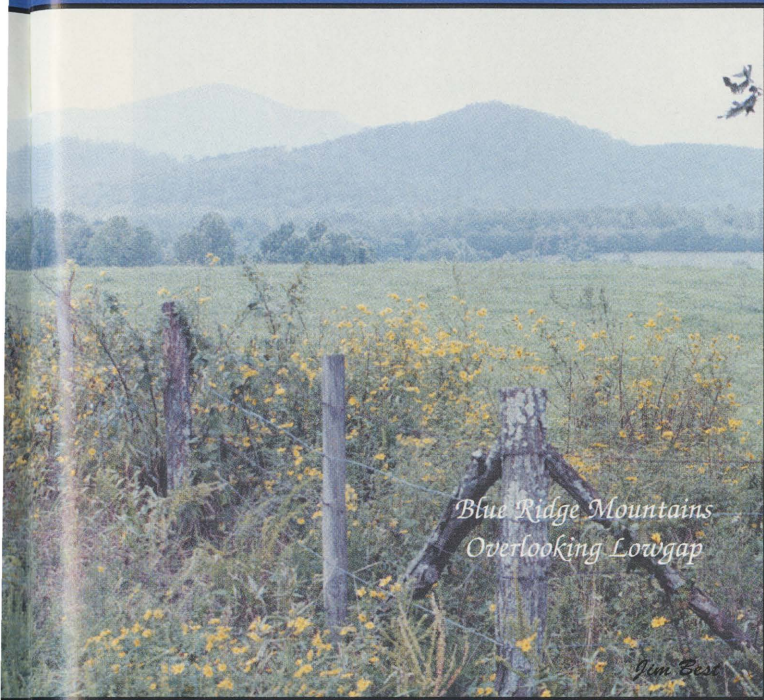


Wildflowers Along the Blue Ridge Parkway



A Winding Mountain Stream

Surry County



BLUE RIDGE ENTERPRISES, INC. General Contractor

Mount Airy, North Carolina 910-789-2134

Established in 1959, Blue Ridge Enterprises, Inc. constructs industrial plants, warehouses, commercial buildings, retail stores, schools, banks, college facilities, offices, restaurants, churches, apartment complexes, condominiums and retirement facilities. Competitively bid and negotiated projects range from thousands of dollars to millions. Blue Ridge Enterprises, Inc. is licensed in North Carolina, South Carolina, Tennessee and Virginia.

SouthData

||||| INCORPORATED



**Remittance Documents For
Banks
Mortgage Companies
Property Managers**

**1401 Boggs Drive, Mount Airy, NC
910-719-5000. FAX 910-789-4143**



Mount Airy Fiddlers Convention

Angela Leonard

Relaxation Is A Breeze

When the 40-hour work-week is over, you won't have to go far to find plenty to do with your free time. Whether it's physical activity you want, or the excitement of a first-hand view of NASCAR racing, you'll find Surry County is a good place to begin.

The area is blessed with not only the best that Mother Nature has to offer, but a wealth of historical sites and the most modern facilities for enjoying time off as a spectator or a participant.

Sparkling streams and rolling hills provide the nature enthusiast with ample opportunities to sample the best of the Blue Ridge Mountains and foothills. North of Mount Airy along U.S. 52, the **Blue Ridge Parkway** passes through the mountains on its long journey from the Shenandoah Valley to the Great Smoky Mountains.

Developments along the parkway offer camping, picnicking, hiking, scenic views and historical sites in either direction. The well-known **Mabry Mill** is sited on the parkway in nearby Meadows of Dan, to the north of Surry County. The hiking, picnic areas and views of **Cumberland Knob**, are located south along the scenic route to the north. A traditional music center proposed at **Fisher Peak** on the North Carolina/Virginia line will offer music as well as a

1,100-acre national park when completed.

Surry County boasts one of the most unique mountain formations in America at **Pilot Mountain**, south of Mount Airy along U.S. 52. Thrust from the flat Piedmont 7 million years ago, the mountain is formed of molten rock which cooled to a granite formation rising 1,500 feet above the surrounding valley. At its feet, the **Yadkin River Trail** winds a watery route with portages and protected access.

The mountain is now the site of **Pilot Mountain State Park**, which offers nature programs and hikes throughout the summer months.

In the northwestern portion of the county another mountain is a draw for Boy Scouts from across the



Keep On Running...

GENERAC
ENGINE POWERED TOOLS

Headquarters For
Free Standing
And Standby
Generators And
Pressure Washers

INGERSOLL-RAND
AIR COMPRESSORS

...F & W and Aurora Pumps...

LEESON...LINCOLN...BALDOR
ELECTRIC MOTORS

**SURRY ELECTRIC
MOTORS AND CONTROLS**

425 Hadley St., Mount Airy, NC
(910) 786-1712

**CORE ELECTRIC
REBUILDERS, INC.**

ALTERNATORS, STARTERS &
GENERATORS EXCHANGE SYSTEM
425 Hadley Street, Mount Airy, NC
(910) 786-6869



NationsBank[®]

704 Independence Blvd.
Mt. Airy, NC 27030
910-719-3300

901 N. Main St.
Mt. Airy, NC 27030
910-719-3325

100% Improvement.



- Free Continental Breakfast
- Free Local Calls
- Free In-Room Movie Channel
- Free Lodging For Kids 18 And Under
- Meeting Room
- Exercise Room
- Swimming Pool
- Interior Corridor
- Data Ports In Every Room

A sign of change for the better. A hotel you can count on. And a 100% guarantee of your complete satisfaction. Or your next night is free. If we didn't mean it, we wouldn't put up this sign.

2029 Rockford Street - Hwy. 601
Mount Airy, N.C. 27030

FOR RESERVATIONS CALL 1-800-HAMPTON

eastern portion of the nation who come to **Raven Knob** to participate in camping and other activities.

Just outside the county, within an hour's drive along N.C. 89 west, **The New River Trail State Park** winds its way north from Galax, Va., following an abandoned railway line and offering a trail for hikers, bicyclers, and horse riders alike. Further east, up Highway 103 to Patrick County, Va., there is camping and rafting in Kibler Valley, and swimming at **Fairy Stone Park**. In Stokes County, east along N.C. 89, **Hanging Rock State Park** offers additional outdoor options.



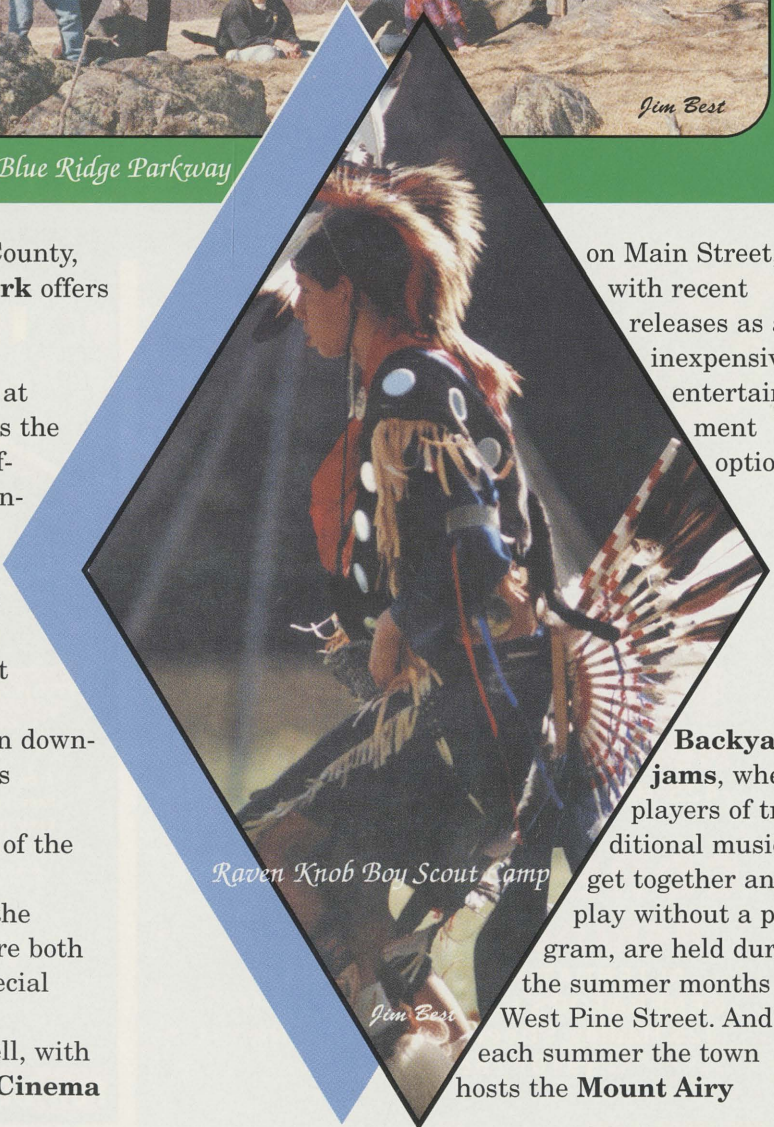
Hiking on the Blue Ridge Parkway

Visiting the Past

The rich heritage of the region is preserved at many sites around Surry County, whether it is the genteel lines of old homes, the toil of a turn-of-the-century farm, the living music of the mountains, or the burial and birthplaces of the region's native sons and daughters.

On Main Street in Mount Airy, **The Mount Airy Museum of Regional History** offers a glimpse back into the past with exhibits about the natural history and the settlement of the region, as well as the more recent past. Also in downtown, the **Mount Airy Visitors Center** offers brochures including one from the Mount Airy Restoration Foundation for a self-guided tour of the town's historical homes and businesses. The **Gertrude Smith House**, built in 1907, and the **William Alfred Moore House**, circa 1862, are both open to the public by appointment, and on special occasions.

The region's music lives on downtown as well, with the Hometown Opry held at the **Downtown Cinema**



Raven Knob Boy Scout Camp

on Main Street, with recent releases as an inexpensive entertainment option.

Backyard jams, where players of traditional music get together and play without a program, are held during the summer months on West Pine Street. And each summer the town hosts the **Mount Airy**



Odell Harrold

Autumn Leaves Wagon Train

Fiddlers' Convention in Veterans Memorial Park on West Lebanon Street, attracting the masters of traditional music from throughout the surrounding area to participate in competitions and entertain the music's devoted fans.

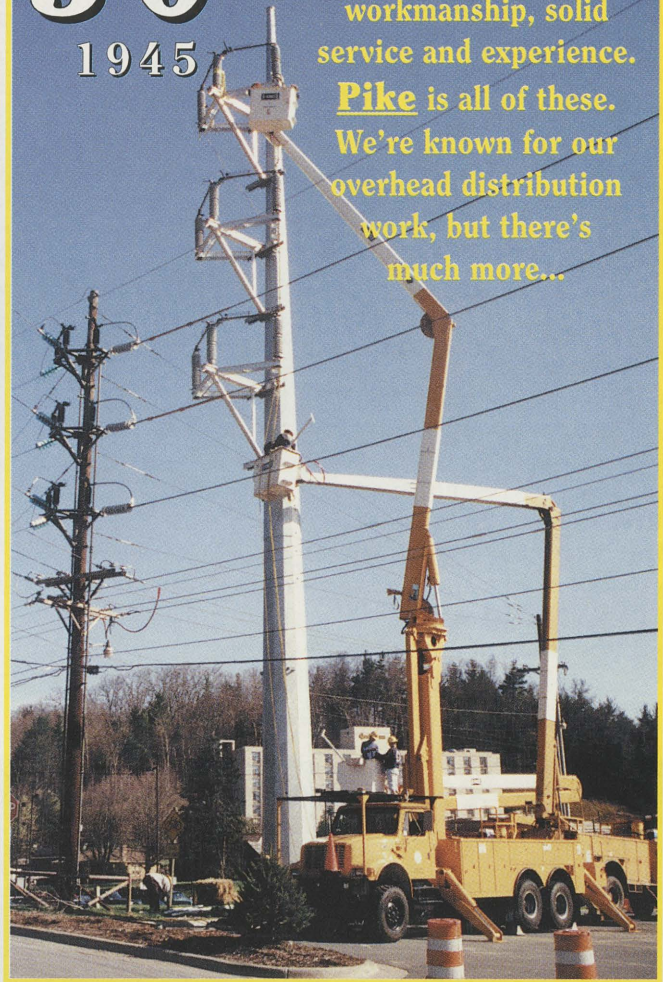
The **Andy Griffith Playhouse** on Rockford Street also hosts periodic performances of both traditional music and more modern music forms, as well as being the home of the Surry Arts Council which produces live theatrical performances throughout the year and hosts many programs for the area's youth, both at the playhouse and in the schools.

South of Pilot Mountain along U.S. 52, **Horne Creek Living Historical Farm** in Pinnacle recreates the farming life of the early 1900s at the Hauser Family Farm, which was one of the leading farms in the county at the turn of the century. The original farmhouse, barn, and other outbuildings still stand and the land is worked without the aid of modern technology or machinery. Authentic crops and animal varieties are at home on the farm, from the vegetables in the garden to the milk cow and mule grazing nearby. The farm is open for tours and also hosts special events such as corn-shucking in the fall.

Turning east from Mount Airy, those in search of the past may want to drive through White Plains on old Highway 601 to the **burial site of the "Original Siamese Twins,"** Eng and Chang Bunker, who moved to Surry County with their wives after retiring from P.T. Barnum's sideshow. They farmed in White Plains

Since
50
YEARS
1945

Reputations for excellence are born of the highest quality workmanship, solid service and experience. **Pike** is all of these. We're known for our overhead distribution work, but there's much more...



- Underground Distribution
- Guided Boring
- Transmission
- Substation Construction
- Right-Of-Way Clearance
- Storm Restoration
- Commercial and Industrial Wiring & HVAC
- Working In 12 States
- 3,300 Employees
- Over 4,000 Pieces Of Equipment

PIKE®

P.O. Box 868 • 351 Riverside Drive • Mount Airy, NC 27030

910-789-2171

and died there in the mid-1800s after raising 21 children.

The flavor of the past lives on each September at the Sonker Festival at the **Edwards-Franklin House**, a plantation house built in the 1790s in the Skull Camp area of the county just off N.C. 89 west and partially restored by the county historical society.

Civil War fans may not find the scenes of many great battles, or even the remains of a home, but they can visit the **birthplace of General J.E.B. Stuart** by taking Highway 104 north of Surry County. Each fall the farm is the site of a living history encampment and reenactment of a skirmish between Northern and Southern battalions, complete with the boom of authentic weaponry.

The Best of Modern Alternatives

Not everyone wants to step back into the past or

relax along a mountain stream when they have time off. Surry County offers easy access to more excitement for those who want something else from their free time.

Golf courses, outdoor pools, and private **water parks**, along with a host of **softball leagues** offer warm weather recreation in the county for those who want physical activity to round out their week.

The **Reeves Community Center** in Mount Airy has a wide-range of options year-round including an indoor pool, gymnasium, racquetball courts, a Nautilus weight room, and a wide-range of leisure classes for youth and adults.

An easy drive to the west or south can open up more breath-taking options such as **skiing** -- on the ski resorts at Banner Elk, Sugar Mountain, Beech Mountain and Seven Devils, or on the water at Lake Norman and other scattered lakes.

Prefer spectator sports? There are plenty of those as well. Amateur action abounds on the ballfield with the Surry Pride **baseball** team or on local race tracks in Elkin and Winston-Salem. Minor league **hockey** and baseball, along with **NCAA basketball and football** action are also nearby in Winston-Salem.

If you need professionals to set your pulse to racing, try **NASCAR** action at North Wilkesboro, Charlotte, or Bristol and Martinsville, Va. Each year brings rac-



Amana
A Raytheon Company

Making A Difference

Whether your kitchen is known for borscht or brats, paella or pizza, quality appliances can mean the difference between feast and famine.

Amana has been making that difference in homes across America for 60 years. And while quickly prepared meals have replaced weekly menu-planning, nothing can replace a genuine Amana.

Amana. Making a difference in your home.

Brannock & Hiatt Furniture
420-422 North Main Street, Mount Airy
786-8659 Service 786-4442

FREE DELIVERY!

ing leaders to the local tracks.

Prefer football or basketball? Then you're still in luck. Charlotte, just an easy drive away along Interstate 77, has both NBA and NFL teams. The **Charlotte Hornets** were added during NBA expansion and quickly gained a loyal following. In their second-year of play, the **Carolina Panthers** have also moved into their new stadium in Charlotte, bringing with them already dedicated fans.

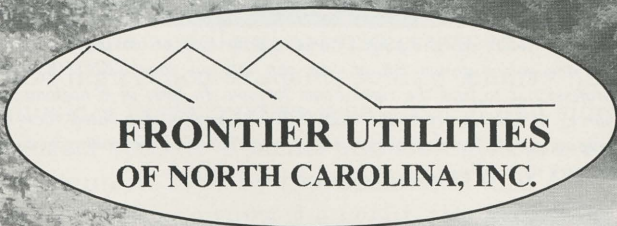
Whatever your playtime choices, chances are good you'll find a place to indulge yourself in or near Surry County, from the quiet relaxation of a mountain stream to the screaming exhilaration of the final minutes of a pro-ball game. Choosing what to do may be the most difficult part.



Carolina Panthers

NATURAL GAS FOR SURRY COUNTY

Clean. Efficient. Safe.



"It is our privilege to serve you"
P.O. Box 1126 Wilkesboro, NC 28697
910-838-8802

Park Place Furniture Accessories & Art



No matter where you make your nest, it's how you feather it that makes it home.

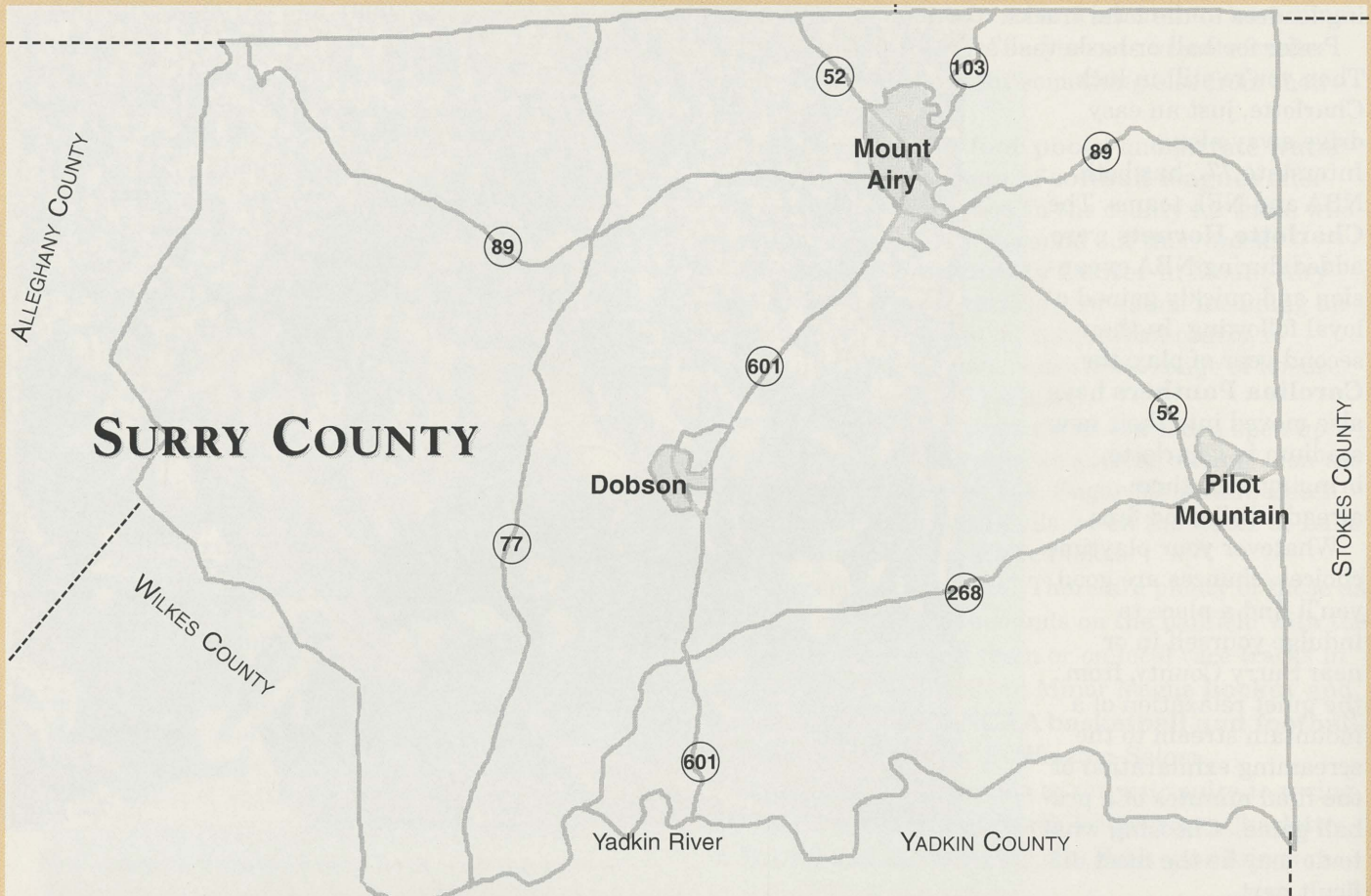
*Featuring Furniture Made In Mt. Airy • Custom Built Furniture
• Original Art Gallery • Decorative Accessories and Gifts*

127 RAWLEY AVENUE • MT. AIRY, NC 27030

Mon. - Fri. 9:30 - 5:30

Sat. 10:00 - 1:00

910-789-8591



Over 400 Manufacturers To Serve You.

*Your North Carolina Connection For
Fine Furniture With Savings Of
30% - 60% Off Your Local Prices.*

Homeaway Furniture

910-786-6151 • 1-800-334-9094



Whether you're searching for a home to grow into, or looking to replace the one you've grown out of, you can rely on your CENTURY 21® professional to find the right home for you. In fact, in a nationwide survey of homeowners*, the CENTURY 21 system was rated "best at helping people find and buy the right home." So if you're looking to move on, give us a call.



Homestead Realty

135 Moore Avenue
Mt. Airy, NC 27030
910-789-1655

Visit Us In Historic Downtown!

Autumn Leaves Festival



You don't have to wait until October to find something to do special in Surry County. From spring until early winter, the area hosts a complete range of festivals and special events that, like the Autumn Leaves Festival, are sure to have something to please everyone.

Pilot Mountain MayFest
 Mother's Day Weekend
 Downtown Pilot Mountain

Mount Airy Fiddlers Convention
 First Weekend in June
 Veterans Memorial Park
 Mount Airy

Piedmont Berry Festival
 Third Weekend in July
 Courthouse Square
 Downtown Dobson

Christmas in July
 Mayberry Mall
 Mount Airy

Mayberry Days
 Last Weekend in September
 Andy Griffith Playhouse
 Downtown Cinema
 Mount Airy

Sonker Festival
 First Weekend in October
 Edwards-Franklin House
 Beulah Community

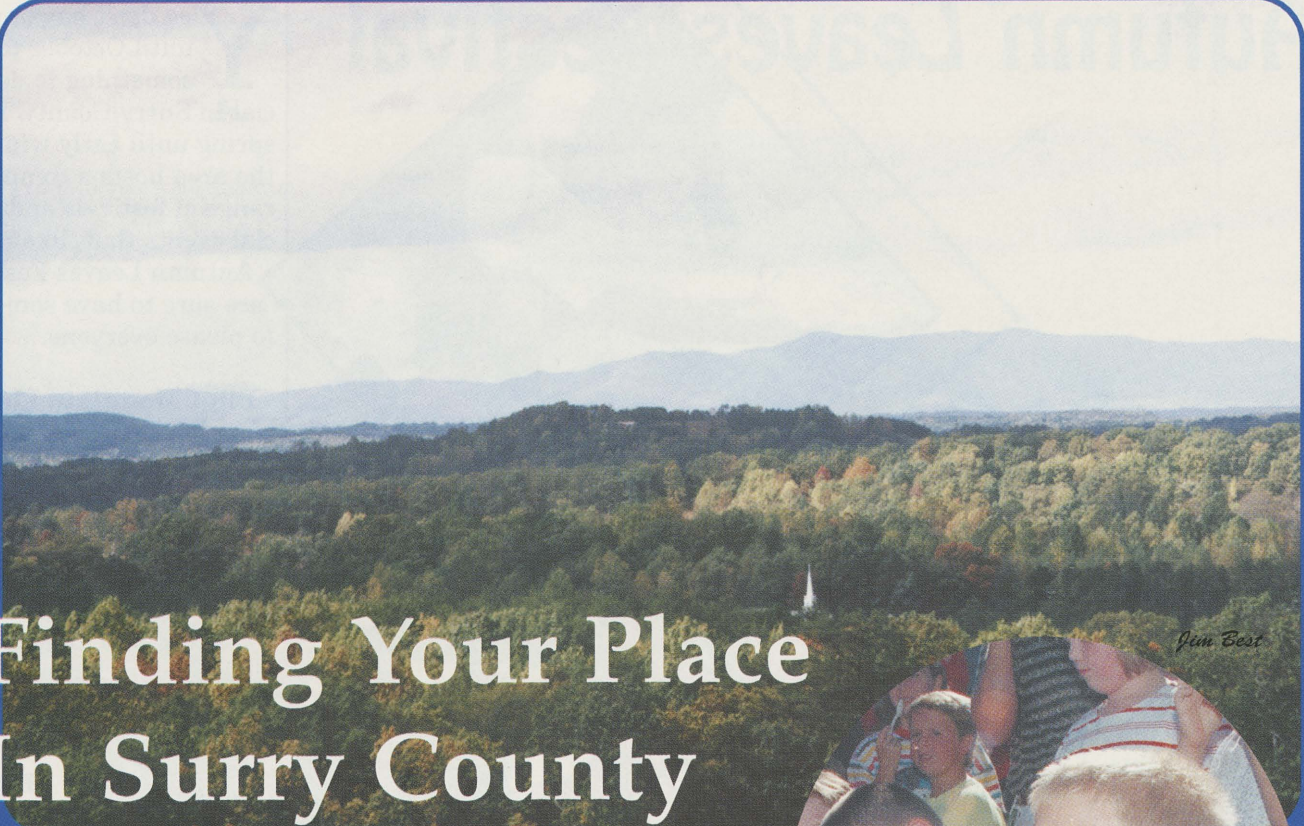
Autumn Leaves Festival
 Second Weekend in October
 Mount Airy

Just as fall is painting the surrounding hills with yellows, reds, golds and oranges, downtown Mount Airy is transformed into a three-day street festival with live entertainment, arts and crafts being sold and created, and a wide range of tempting food choices to please even visitors who aren't interested in shopping.

The Autumn Leaves Festival begins the second Friday of October and continues through Sunday with streets in the central business district blocked off for street vendors and activities, and other events taking place around the town.

Main Street and sections of the adjoining streets from Pine Street north to Independence Boulevard become a street bazaar with a special flavor unique to the area. In among the baskets, woodworking, art prints and floral arrangements there are quilters, banjo pickers, and high school students selling country ham biscuits. Traditional music is performed on a bandstand and sidewalk curbs become the perfect spot for a picnic and a chance to rest tired legs.

Begun in 1967 by the Greater Mount Airy Chamber of Commerce, which still sponsors the event, the Autumn Leaves Festival annually attracts upwards of 200,000 people to one or more of its many events, or to simply wander the streets and enjoy the sights, sounds and flavors of the foothills.



Finding Your Place In Surry County

The Hills of Surry County

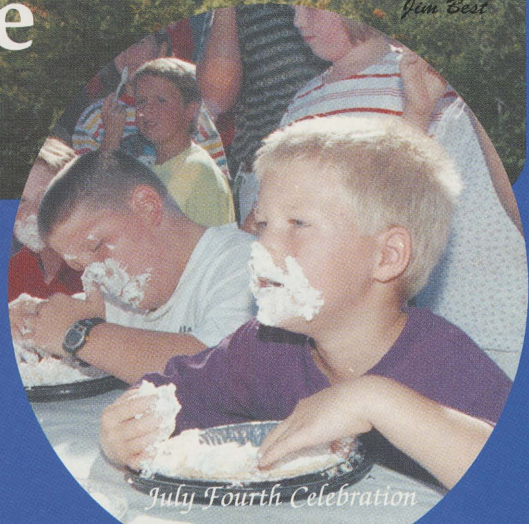
Moving to a new community is a big step for anyone, but one that is easy if the move is to Surry County. Whatever plans you have for your new home -- from housing to community involvement -- you'll find your niche somewhere in Surry County.

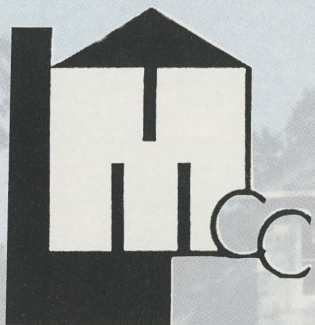
Finding A Home

When you are choosing a place to live, there are many things to consider. Do you want an apartment in town with no upkeep or yard work? Looking for a house in the suburbs in a developed community? Or do you prefer room to roam, a home with acreage or even a farm?

Whichever option will suit your lifestyle, finding the home that meets your need is as easy as driving around the county and stopping by a local real estate office.

As the county's most developed area, Mount Airy offers many housing alternatives for town living. Choices vary from homes in the historic downtown district to modern apartments with conveniences to meet the needs of





Lee Mills Construction Co., Inc. General Contractors

Office (910) 789-2005
Home (910) 789-3314
Unlimited Residential &
Commercial Builders



Custom construction, handled turn key has been our specialty since 1976. We offer in-house designing, drafting, interior decorating, etc., while providing an unequaled and unique product with all emphasis focused toward our clients.

Prime building lots are available from our two subdivisions, Country Manor Estates and Saddle Brook. Country Manor Estates is located in Mount Airy, N.C. off Red Brush Road and Saddle Brook is located behind Surry-Yadkin Electric in Dobson, N.C.

Family-owned and operated, we make building the enjoyable, once in a lifetime experience its meant to be. After completing over 300 homes and offices, we see our clients as our friends.





North Main Street, Mount Airy

more hectic living. Outside the town limits, but within the city's school district, you can find subdivisions and less developed areas.

The county's other municipalities, Dobson, Elkin and Pilot Mountain, also offer the options of town living -- apartments, homes, and subdivisions alike -- with the convenience of shopping and other services nearby.

Outside the boundaries of the towns, the county's housing ranges from exclusive developments to large farms, from wooded hillsides to open farmland, and everywhere in between.

If you want a mountainside retreat where deer and turkey may be found in the backyard, then the hills in the northern and western portions of the county offer plenty of solitude. Prefer rolling pastures with horses or cattle? Then look to the south. Hills and a mixture of woods and fields? Try the central portion of the county where farms and developments mingle. Whatever view you want, you can have it outside your picture window.

Not only do you have your choice of locations, but price range is also widespread, meeting the

needs of everyone from first-time homeowners to those who have achieved their goals and want a home to reflect their success.

Mobile home parks, developed under county guidelines, often make it possible for young couples to have a home of their own when they cannot afford a site-built home. Older homes scattered throughout the county are also available in lower price ranges.

In 1995, when property was last reappraised for taxes, the median home was valued at \$48,000.

According to county tax records, about 9,000 homes are valued below the median. Many homes are also higher priced, with nearly 2,000 valued at more than \$100,000.



Dogwoods

Joining The Community

Wherever you choose to live, finding ways to become involved in the life around you won't be hard.

It's merely a matter of matching your talents and interests to the many community groups that are active throughout the area.

If you're a parent, the first point of contact is likely to be the school where your child is a student. Parent groups at the schools support extracurricular events and add to the classrooms as well through their involvement in programs. Those who desire more input in the system can seek a seat on the county or city school boards, both of which serve as elected boards.

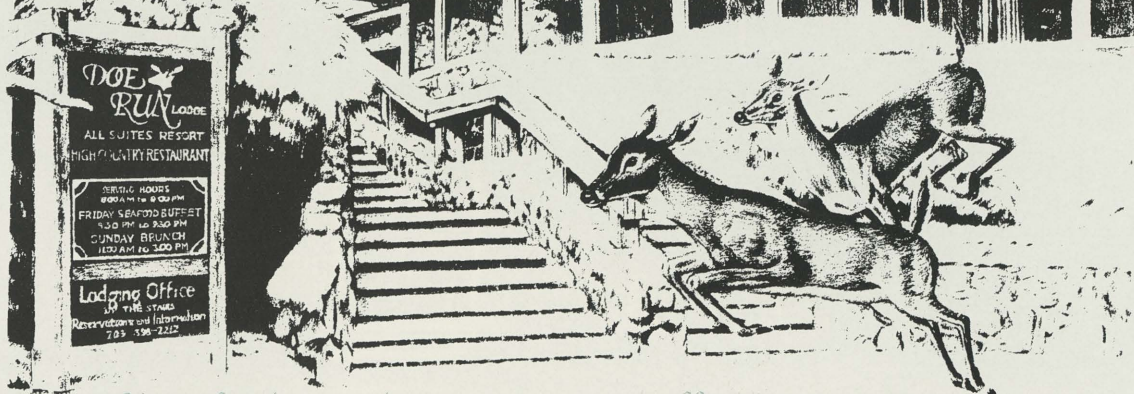
Those who want to be involved with children, but have none of their own or none in school, can still find ways to help the area's youth through such programs as recreational groups and youth foundations. Many community groups, such as Ruritans, also provide youth services in recreational programs, such as summer baseball or softball leagues. There



Odell Harrold

Summer Cool Down

Tranquility



3000 feet above the day-to-day routine at an all-suites resort. Fine dining, full-service bar, live weekend entertainment. Perfect for business conferences and retreats, family vacations, romantic getaways.

The Doe Run at Groundhog Mountain.

Milepost 189, Blue Ridge Parkway, Fancy Gap, VA 24328

1-800-325-6189 • 540-398-2212

18/100 Lullland Bayhead

DOE RUN

are also active scouting programs throughout the county, and summer camping programs at Raven Knob -- a Boy Scout camp in the northern portion of the county.

Volunteers are also welcomed in the schools through the Partners in Education program, which many local businesses participate in. Through those programs employees volunteer time in the classroom or in extracurricular activities that enrich children's education.

The county also has active volunteer fire departments and rescue squads in many communities. These organizations, which receive limited county support, provide a vital service to the county and a worthwhile opportunity for residents to help their friends and neighbors during emergencies.

Civic Organizations

Those who want to play an active part in their community have many options for involvement. Surry County's list of civic organizations includes everything from the Altrusa Club to the Veterans of Foreign Wars. There are Women's Clubs, Lions Clubs, Ruritan Clubs, Jaycees, Kiwanis Clubs, American Legion, Mount Airy Rotary and the Elks Lodge. There are several Masonic Lodges, as well as Order of the Eastern Star and Shriners.

For those with more specific interests, there are two



February Snow


garden clubs, the Multiple Sclerosis Society, the Mount Airy Ministerial Association and Yokefellows, the Surry Friends of Youth, and the Surry Humane Society.

Want to find out about Surry County's past, or your own? There's the Surry County Historical Society, the Genealogical Society, and the Mount Airy Restoration Foundation.

Have some volunteer time and interested in helping



- Custom Homes
- Customized Plans
- Additions
- Offices
- Custom Cabinets

**DAVID
HILL** 
Custom Builders

Simpson Mill Road, Mount Airy 910-789-5517

others? Northern Hospital of Surry County has an active auxiliary that assists in many aspects of the hospital's operation, especially in dealing with families of patients.

Those interested in finding out more about the area even have a club of their own -- the Mount Airy Newcomers Club -- just in case you have any problem finding out where or how to get involved.

Special Interests or Talents

Those with a special talent or skill aren't forgotten when it comes to finding a means of putting that talent to work.

The Surry Arts Council is an active performing arts forum, which not only brings in special programs and sponsors festivals, but also stages productions with local performers. Events range from concerts to theater and are produced at either the Andy Griffith Playhouse or the Downtown Cinema, and frequently feature open auditions, inviting any interested performer to try out.

The local arts guilds provide involvement for those with other talents in the arts, with shows at the public libraries. Local galleries also welcome work by the artists and craftspeople who live throughout Surry County.

Prefer athletic activities? Then adult recreation leagues may provide the outlet you'll want. Both Mount Airy and Pilot Mountain have recreation centers with ongoing programs throughout the year. Bowling leagues and other activities are easily found in the area as well.

Surry Arts Council's "Li'l Abner"



Religious Choices

Religion was often the bond that brought Surry County's early settlers together, and it remains a strong part of the community today -- no matter what faith you choose to follow.

The area's oldest religions are Quaker and Episcopalian, along with Baptist, Methodist, and Presbyterian, and the historic Trinity Episcopal Church on Main Street in Mount Airy over a century old. Other religions are well-established as well, and churches throughout the county provide differing doctrines and services to meet the needs of county residents.

BRINGING COMPREHENSIVE ME

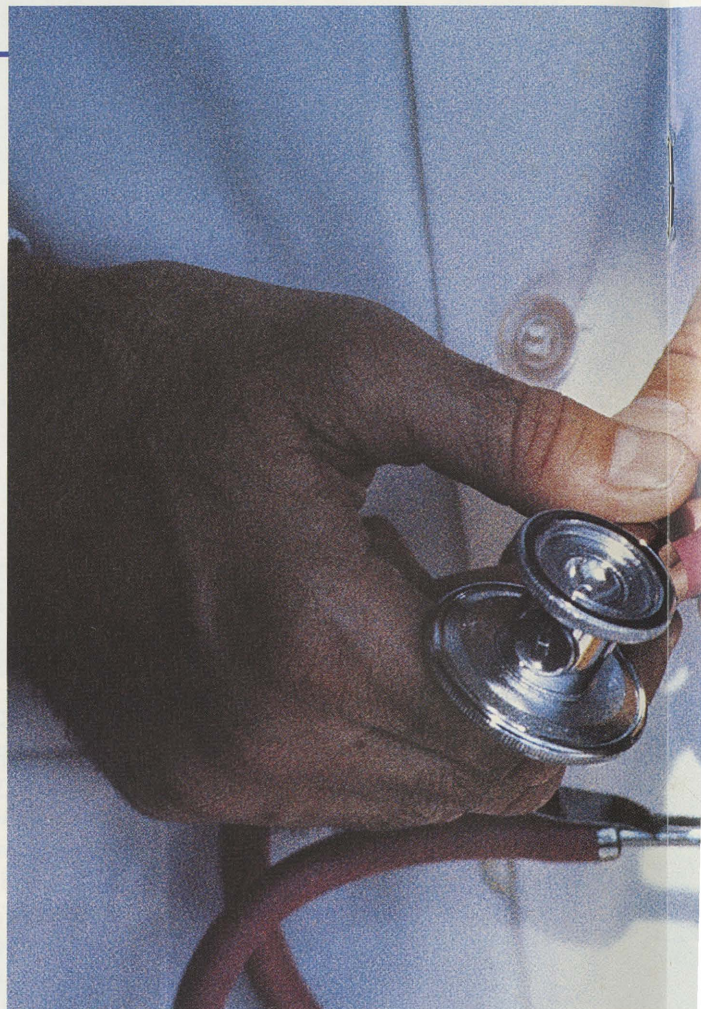
OUR MISSION

“Northern Hospital of Surry County, a community health care system, provides access to health services for the people of Surry County and the surrounding areas, striving to improve the quality of life through the promotion of healthy lifestyles and the delivery of quality care.”

Built in 1956, Northern Hospital of Surry County is a public, not-for-profit hospital offering a wide range of inpatient and outpatient services. Accredited by the Joint Commission of Accreditation of Healthcare Organizations, our 137-bed hospital features a highly trained medical staff and other professionals dedicated to providing the care our community needs to stay healthy and productive.

■ MEDICAL STAFF

The medical staff represents a full range of care including *family practice, orthopedics, neurology, primary care, internal medicine, cardiology, obstetrics and gynecology, pediatrics, gastroenterology, surgery, urology and oncology*. Our physicians also utilize some of the most advanced diagnostic



equipment to detect disease in its earliest and most treatable stage including MRI (magnetic resonance imaging), nuclear medicine, CT scanning and ultrasound. The hospital's Outpatient Surgery Unit also allows people to have surgery more conveniently and affordably close to home.

■ SERVICES

Northern Hospital continues to expand services so local residents can stay close to home for medical care. The hospital offers physical rehabilitation for those disabled by accident or illness as well as chemotherapy for those battling cancer. For those

MEDICAL CARE CLOSE TO HOME



allows more women to have this important diagnostic procedure.

For patients discharged from the hospital, but requiring home care, Northern Hospital provides skilled nursing care as well as physical, speech and occupational therapy. Assistance with personal care and other needs for daily living are provided by our home care division. For terminally ill patients and their families, Northern Hospital provides this specialty care through Northern Hospice.

■ COMMUNITY OUTREACH

Northern Hospital is also committed to reaching out beyond the hospital into the community to make care more accessible. Northern Pediatrics, Northern Medical Center, Dobson Medical Center, Westfield Medical Center and King Medical Center were established to meet the growing medical needs of our community.

with emotional disorders, the hospital also provides inpatient and outpatient psychiatric services.

Expectant parents will also appreciate the hospital's newly renovated birthing rooms which allow parents a home-like atmosphere in which to bring a new child into the world.

Because the hospital is dedicated to keeping the community healthy, Northern Hospital offers educational classes for expectant parents on such topics as parenting, childbirth, CPR and infant care. Other classes are held to help people understand the importance of making healthy lifestyle decisions.

The hospital's new mobile mammography unit now



**NORTHERN
HOSPITAL**
OF SURRY COUNTY

If you want to know more about the services or medical staff at Northern Hospital of Surry County call (910) 719-7000.

P.O. Box 1101 ■ 830 Rockford Street
Mt. Airy, NC 27030-1101

Surry County Seat -- Dobson

Established at the geographical center of the county in the mid-1800s to serve as Surry's county seat, Dobson is first and foremost a court town.

The three-story courthouse and its square serve not only as the focus of most of the town's enterprise, but also as a shady park with looming trees, benches, and grassy lawns, the perfect place for a bag lunch or relaxation during the town's annual Berry Festival.

The courthouse is surrounded on all four sides by businesses ranging from a service station to banks, a drug store and a restaurant. Many of the buildings, however, are offices for attorneys, probation, counseling services, and the many other professionals whose work is entwined with the day-to-day business of the courts.

With most of the town's business district on the streets circling the courthouse, the town relies on the constant activity surrounding the court's services for its incoming business — a tradition that dates back as far as "court day" in the 1800s, when people from throughout the county would come to Dobson to trade, visit, and participate in courthouse events when the infrequent courts were scheduled.

Now court is practically a daily affair and a full-time job for those it involves. The county is developing plans to renovate and expand the courthouse, last renovated in the 1970s, to add two new criminal courtrooms and additional space for support services.

As the need for county services has grown, so has Dobson, with a building for the sheriff's department and a jail housing 80-odd prisoners, a county agricultural building for the Cooperative Extension Service, and in the eastern part of town a modern county government complex. The county's emergency communications center, along with an Emergency Medical Services' outpost, is located south of town just off Highway 601.

County investments have encouraged other growth — a shopping center near the government complex, and new development across from the courthouse as well — big news in a small town

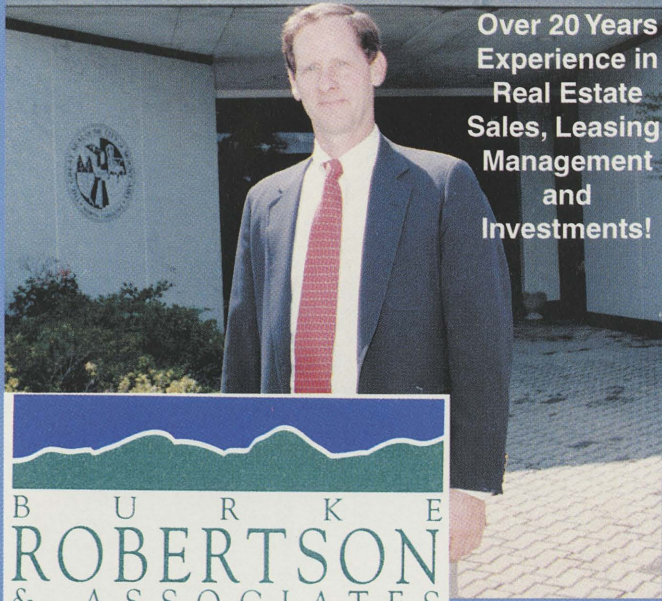


such as Dobson, where the three-man police department shares its office space with the volunteer fire department. West of town, Dobson boasts one of the county's two public outdoor pools, a new elementary school, and a new middle school.

More centrally located is the high school, and Surry Community College, one of the top-rated community colleges in the state. Students from throughout the county, and beyond, can reach the campus easily along Highway 601 or Interstate 77, which passes nearby, or one of the gently winding secondary roads that leads into town.

The town's main industry is located east of the downtown area as well. Wayne's Farms operates a large poultry processing facility there, providing jobs to those who work in the plant, as well as the dozens of farmers in the surrounding county who raise poultry.

MOUNT AIRY, NORTH CAROLINA



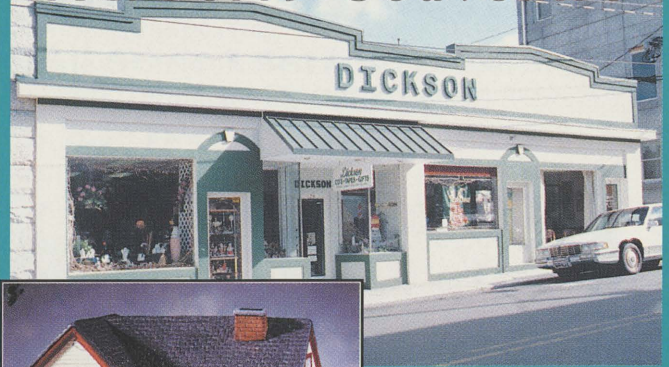
Over 20 Years
Experience in
Real Estate
Sales, Leasing,
Management
and
Investments!

BURKE
ROBERTSON
& ASSOCIATES

170 W. Independence Blvd., Mount Airy, NC 27030
(910) 786-1900

*Let Us Help You Open Doors In Real Estate
Throughout The Region!*

Mayberry Souvenirs



Dickson is a must see, one-of-a-kind place. Enjoy it's special charm and equally charming shopkeepers. Many unique products all made with the highest quality craftsmanship.

Wally's Service Station

Mayberry Souvenirs, Gourmet Food Products,
Department 56, Boyd's Bears, Madame Alexander Dolls,
Carousels, Lighthouses, Music Boxes, Cassettes, CD's,
Fontanini, Civil War Items, Dreamsicles, Wilton Products
And Much More!

Dickson

124 Franklin Street, Mount Airy, North Carolina
910-786-5240



*Surry
Temporary
Services, inc.*



Teresa D. Yeatts

We are local and the people we hire to work at your company are from this area. We all have a lot of pride in this community and work hard to earn the respect of good people like yourself. Being the hometown service is important to us. It means our good name is on the line every day. Call us for your next assignment. We're right down the street.

259 North Main Street, Mount Airy, North Carolina 27030 (910) 789-8220

Plenty of Ways to Get You There



Whether you're passing through the county, trying to get from one end of the county to the other, or looking for fast transportation to some more distant spot, Surry County makes it easy for you to get there.

Crossing the County

The county is criss-crossed by primary state routes, interstates, and well-maintained secondary roads that provide critical connections between the different municipalities and townships.

Primary roads connect Mount Airy to the other municipalities, with a four-laned U.S. 52 from Mount Airy to Pilot Mountain to the south, and Highway 601 running from the city to the county seat in Dobson. U.S. 52 is a limited access road, while Highway 601 is largely undeveloped along its borders, making travel simple between the three areas.

Driving Away

Whether you're taking a trip or sending a shipment of cargo to some distant destination, the county's highway network offers a quick commute to the open road.

U.S. 52 goes south to Winston-Salem and the Piedmont Triad area, giving Surry County close connections to the shopping, entertainment, and employment of the larger, more metropolitan areas. Heading north along the same highway, you quickly reach the Virginia border.

Need to go further? Interstate 77 traverses the western part of the county, a quick drive from Mount

Airy on Route 89, or a second interchange just south of Dobson. I-77 takes drivers quickly to Charlotte to the south, or north to West Virginia.

Construction on what was originally a connector linking U.S. 52 and I-77 with limited access four-lane is expected to be complete before the turn of the century. The road, however, has been upgraded and will be Interstate 74, merging with other highways in places and requiring additional new construction across the state for completion.

By Plane, Train, or Wire

You can get out of town even faster if you fly, and whether you own your own plane or work for a corporation which does, then the Mount Airy/Surry County Airport can offer you a place for departure and coming home.

Shipments can also go out by train, although the Norfolk and Southern Railway no longer runs a passenger train to the area. Local trucking companies offer shipment services as well to speed delivery of locally manufactured items to points beyond.

The information superhighway also runs through Surry, so you can get the information you need, or send your data quickly and easily.

Whatever needs to travel -- merchandise, information, personnel, or you and your family -- it can travel to and from Surry County with an ease that belies the county's rural character and easy pace of life making the area truly a place where you'll never feel tied down.

Accommodations

MOTELS

Best Western-Bryson Inn, 3630 W. Pine St.,
Mount Airy1-800-528-1234

Callaway Motel, Hwy 52, North, Mount Airy
.910-786-4195

Comfort Inn, 2136 Rockford St., Mount Airy
.1-800-789-2000

Hampton Inn, 2028 Rockford St., Mount Airy
.1-800-HAMPTON

Holiday Inn Express, Hwy 52 & 268, Pilot
Mountain910-368-5531

Holly Inn Motel, Hwy 52, North, Mount Airy
.910-786-8387

Surry Inn, Rt. 1, Box 591, Dobson
.1-800-258-3117

Mayberry Motor Inn, Hwy 52 Bypass, Mount
Airy910-786-4109

BED & BREAKFAST

Mayberry Bed & Breakfast, 329 W. Pine St.,
Mount Airy910-786-2045

Merritt House Bed & Breakfast, 618 N.
Main St., Mount Airy1-800-290-6290

Pine Ridge Inn Bed & Breakfast, 2893 W.

Pine St., Mount Airy910-789-5034

Scenic Overlook Bed & Breakfast, Rt. 3,
Box 20B, Pinnacle (No Children)910-368-9591

The Blue Fawn Bed & Breakfast, 3052
Siloam Road, Siloam910-374-2064

The Carriage House Bed & Breakfast, 218
Cherry Street, Mount Airy . . .1-800-707-8798

Inn at Orchard Gap, Blue Ridge Parkway
Milepost 194/195, Fancy Gap, Va.540-398-3208

Doe Run, Blue Ridge Parkway Milepost 189,
Hillsville, Va.800-325-6189

Trails End Bed & Breakfast, 129 Sante Fe
Trail, Pinnacle910-325-3268

COUNTRY INN

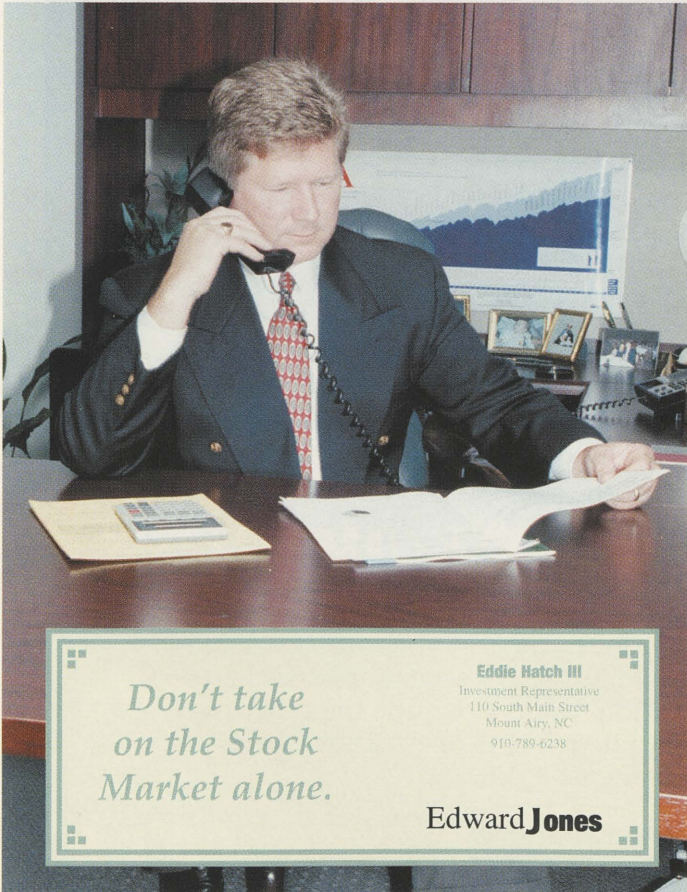
Cascade Mountain Inn, Blue Ridge Parkway
Milepost 199, Fancy Gap, Va. . .540-728-2300

CAMPING

Blue Ridge Foothills Family Campground,
Inc., Rt. 3, Box 85-A, Dobson . .800-554-1477

Homeplace Recreation Park, Rt. 1, Box 300,
Ararat910-374-5173

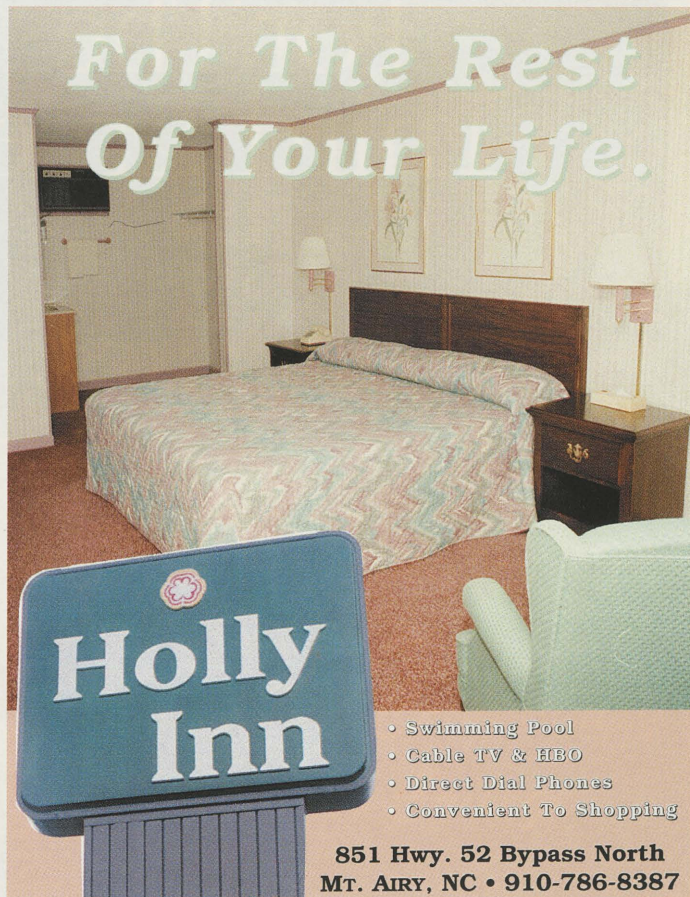
Pilot Mountain State Park .910-325-2355



*Don't take
on the Stock
Market alone.*

Eddie Hatch III
Investment Representative
110 South Main Street
Mount Airy, NC
910-789-6238

Edward Jones




*For The Rest
Of Your Life.*

**Holly
Inn**

- Swimming Pool
- Cable TV & HBO
- Direct Dial Phones
- Convenient To Shopping

**851 Hwy. 52 Bypass North
MT. AIRY, NC • 910-786-8387**



We've
Won A Once
In A Lifetime
Award.

For The
Third Time.

(1972, 1984 & 1995)

Most power companies would be thrilled to win the prestigious Edison Award. It's presented annually by the Edison Electric Institute to the nation's most outstanding electric utility -- truly a once-in-a-lifetime recognition.

We've won it for an unprecedented third time.

Duke Power would like to thank the Institute for again choosing us to receive our industry's highest honor. Thanks, too, to each of our more than 1.7 million customers for giving us

the opportunity to be our best.

And we'd especially like to thank our shareholders, who year after year have encouraged us to greater heights. We will continue to work hard to justify your faith in us.

We're proud of this great honor. But we know that the laurels we've won are not for resting on; they are, instead, for building on. So we have placed the 1995 Edison Award alongside the other two. And have begun anew to be the very best -- all over again.

DUKE POWER

Winner, 1995 Edison Award

A Learning Experience In Surry County

Being a part of Surry County -- as a parent, child, or any other citizen -- means being presented with endless opportunities for learning.

Educational opportunities in the county range from certified day care programs to the ability to earn a bachelor's degree through a special program at Surry Community College.

Two universities and a college are less than an hour's drive away.

Public Education

A bond referendum several years ago put Surry County's schools well on the way toward having modern facilities for the students.

Many of the county's schools have been remodeled or replaced in the last decade. A new alternative high school for students who need extra atten-



Central Middle School

LEARN MORE = EARN MORE



tion to succeed was opened in September 1996 at one of the former elementary schools which had been closed a year earlier after a new building was completed.

The county's government has also exhibited an ongoing commitment to education, raising the amount allocated to the schools for two years in succession.

As well as upgraded facilities, the county's schools are committed to excellence and providing a well-rounded education for students. There are numerous extra-curricular activities and each of the three county high schools has strong athletic teams for inter-scholastic competition.

The county has nine elementary schools, three middle schools, and three high schools, ranging in size upwards from East Surry High School to Surry Central and finally North Surry.

The city has a separate school division which receives additional funding from a school district tax. There are two elementary schools and a combination junior and senior high school facility in the city.

Continuing Education

After high school, Surry Community College, located in Dobson, makes it easy for students to continue their education. The community college is one of the top rated in the highly acclaimed North Carolina Community College System, and is steadily growing



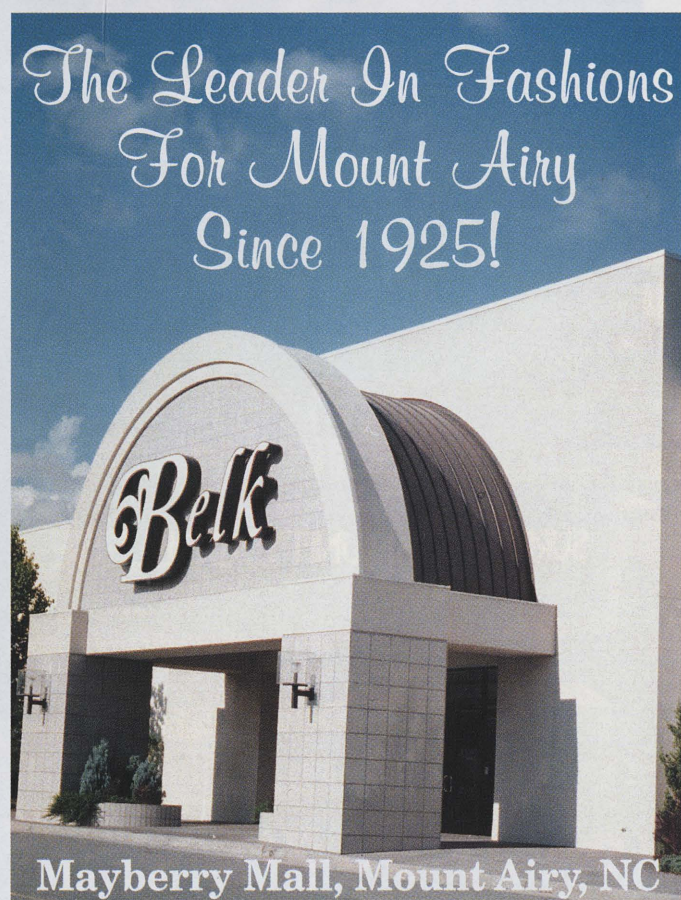
Mount Airy High School

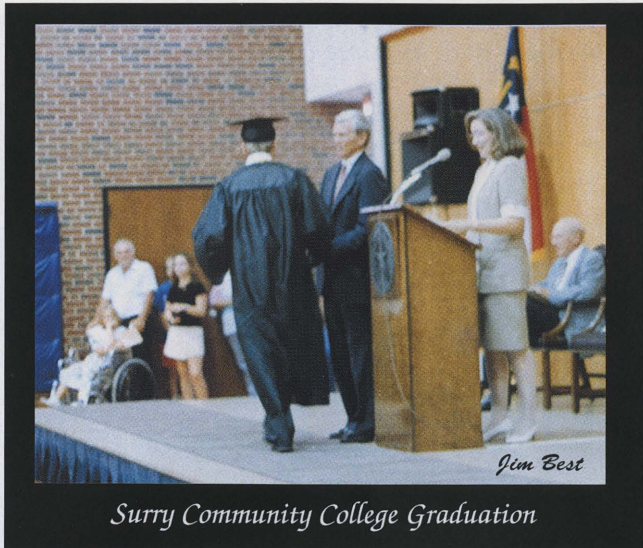


*Marion's
Jewelry & Gifts*

"Now In Our 30th Year Of Business"

Mayberry Mall • Mount Airy • 910-786-5566





Surry Community College Graduation

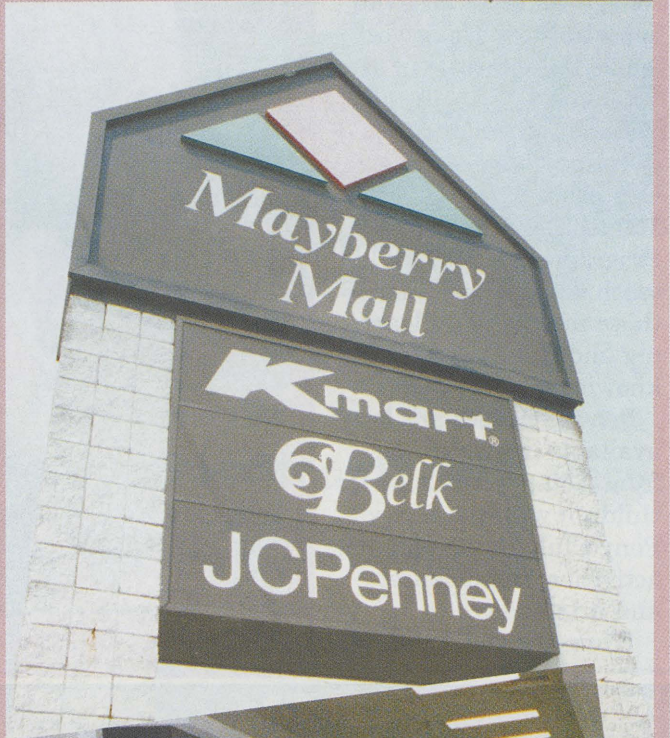
with the addition of a new Medical Sciences building.

In addition to two-year degree programs, Surry Community College also works with local industries to design programs for employee training, and aids in retraining displaced workers as well.

There are also class offerings which are not aimed at a degree, but for enjoyment of the participants, such as woodworking.

For those serious about continuing their education with a four-year degree, a cooperative agreement between Gardner-Webb College and Surry Community

Shopping Made Simple...



OVER 20 GREAT STORES!
Shop The Mall That Bears The Name Mayberry.

Hwy. 52 Bypass, Mount Airy



JC Penney®
 Mayberry Mall

College allows students to attend Surry and take classes that will eventually earn them a bachelor's degree from Gardner-Webb.

Outside the Class

Learning opportunities aren't limited to those found inside the school, or college walls. In fact, the opportunities are as varied as the interests of area residents.

The local North Carolina Cooperative Extension Service offers a Master Gardeners Program each year to teach gardening skills to those interested in learning and passing on their knowledge.

Private classes are available in everything from riding instruction for children with the Surry Pony Club, to recreational activities, self-defense, and arts and crafts.

Wherever you are in life,

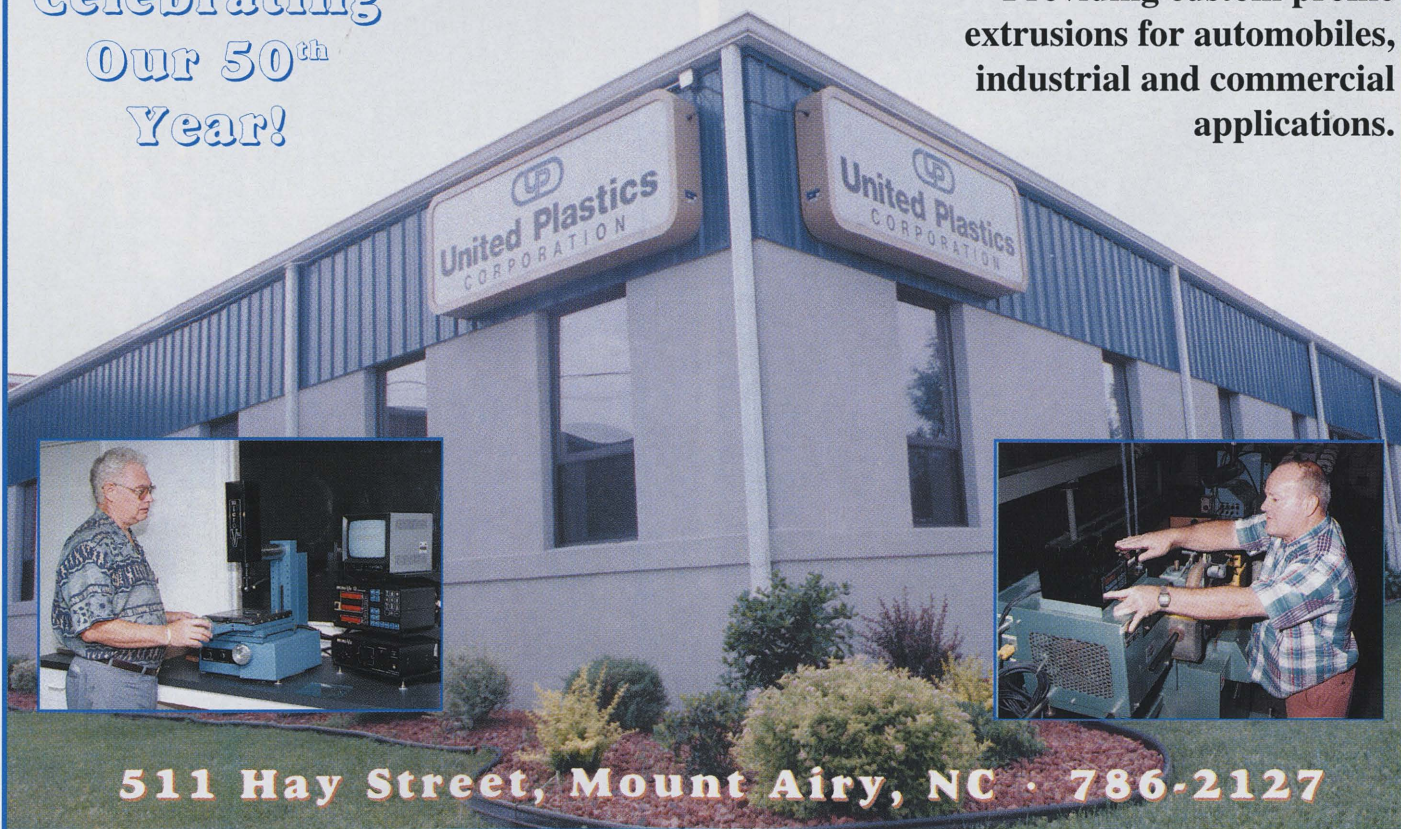
you'll find there's more to learn, and plenty of options for learning here in Surry County.



Field Day at Jones Elementary School

**Celebrating
Our 50th
Year!**

**Providing custom profile
extrusions for automobiles,
industrial and commercial
applications.**



NDI

Network Dynamics, Inc.

Connecting People To Their Work



- Computer Network Engineering Service
- Local and Wide Area Networks
- Microsoft and Novell Certified

1401 BOGGS DRIVE, MT. AIRY, NC 27030
PHONE (910) 719-6800



Strand, Skees, Jones & Company

A North Carolina C.P.A. firm since 1945 with an office in Mount Airy since 1962.

910-786-8347

Leading The Way In Real Estate And Auctions Since 1964



Highway 601 - Mount Airy, NC
NC Lic. #685 - VA Lic. #2

ROGERS
REALTY & AUCTION CO.

Telephone - 910-789-2926
1-800-442-7906

Statistical Data

POPULATION

	1980	1994
County	59,449	64,348
City	6,862	8,139

CLIMATE

Annual Average Temperature	.57.4
Monthly Average Temperature	
January	.32.2
July	.75.8
Annual Average Rainfall (inches)	.45.5
Annual Average Snowfall (inches)	.10.5
Elevation	.1,100 ft.
Mount Airy Area	.6.81 square miles
Surry County Area	.539 square miles

GOVERNMENT

Type of Government	
.....	City Council/Manager
.....	County Board of Commissioners/Manager

FINANCIAL INSTITUTIONS

Banks	.8
-------	----

UTILITIES & SERVICES

Electricity	
.....	Duke Power Company
.....	Surry Yadkin Electric Membership Corp.
Water Source	
.....	City -- Lovill/Stewart Creeks
.....	Capacity 8.5 million gallons per day
Wastewater Treatment	
.....	Mount Airy Water Treatment
.....	Capacity 7 million gallons per day
Solid Waste Disposal	. Surry County Landfill
Natural Gas	
Frontier Utilities Of N.C. (Awarded Franchise)	

COMMUNICATIONS

Major Newspapers Received	.4
Local Newspapers	.3 (1 daily)
Cable Television Providers	.3
Local Radio Stations	.4
Telephone	
.....	Sprint-North Carolina
.....	Surry Telephone Membership Corp.

LABOR ANALYSIS

Employers with workforce over 500	.8
Labor Force	.32,240
Unemployment Rate	.3.7%
Median Family Income (1993)	.\$33,300

TAXES (RATES EFFECTIVE JULY 1, 1996)

Real Estate (per \$100)	
Surry County (countywide)	\$.052
Mount Airy	\$.048
Mount Airy School District	\$.012
Dobson	\$.038
Pilot Mountain	\$.046
<i>(Municipal, School and Fire District Taxes are Added to the Overall County Rate)</i>	

TRANSPORTATION

Highways	
U.S. Primary	U.S.52
State Primary	N.C. 89, 601, 104, 103
Interstate	I-77, I-74
Airports	
.....	Mount Airy/Surry County Airport
Nearest Commercial	Piedmont Triad 50 miles
Railway	Norfolk and Southern
Bus Service	Greyhound
In-City/County	YVEDDI

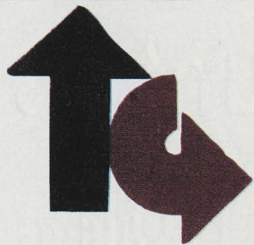
EDUCATION

Elementary	
City	.2
County	.10
Junior High/Middle School	
City	.1
County	.3
Community College	Surry Community College
Nearest Colleges/Universities	
.....	Wake Forest University (35 miles)
.....	Winston-Salem State University (36 miles)
.....	Salem College (37 miles)

COMMUNITY INFORMATION/

ECONOMIC DEVELOPMENT

The Greater Mount Airy Chamber of Commerce	(910) 786-6116
Surry County Economic Development Partnership Inc.	(910) 386-4781
Surry County Manager	(910) 401 8201
Mount Airy City Manager	(910) 786-3503
Dobson Town Manager	(910) 386-8962
Pilot Mountain Town Manager	(910) 368-2248



Town & Country Realty of Mount Airy, Inc.

*We're not the best because we're
the oldest, we're the oldest
because we're the best!*

- Oldest established Real Estate Company in town.
- Computerized Multiple Listing
- New Construction Available
- 100's of Lots and Tracts Available



660 West Lebanon Street
Mount Airy, NC 27030
910-786-2115



*The Area's Finest
Lodging And
Dining Experience!*

Pine Ridge Inn

Hwy. 89 West
Mount Airy, N.C.
(910) 789-5034

35 Years Of Complete Real Estate Service.

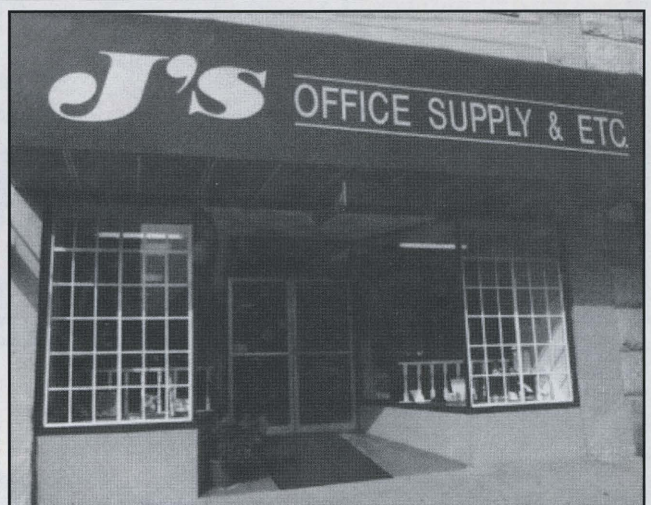
- Private Sales & Auctions
- Homes, Farms
- Small Lots & Tracts
- Commercial Property

In addition to our sales and auction staff, we
have 3 state licensed real estate appraisers.

**GARSON
McMILLIAN**
REAL ESTATE & AUCTION CO.

805 N. Main Street - Mount Airy, NC
1-800-787-3665
Doris McMillian, Broker

We Guarantee You Will Be Satisfied With Our Service!



**Headquarters For All Your Office
Supplies And Furniture...Name Brand
Discount Prices**

**J's OFFICE SUPPLY
& ETC.** 

159 N. Main Street • PO Box 392 • Mount Airy, NC 27030
(910) 789-2222 • 1-800-543-9192 • FAX (910) 789-4600
Fred & Phyllis Jennings, Owners



INTERNET ACCESS PROVIDER



LOCAL EXCHANGE SERVICE



WIRELESS COMMUNICATIONS

Surry County's Connection To The World



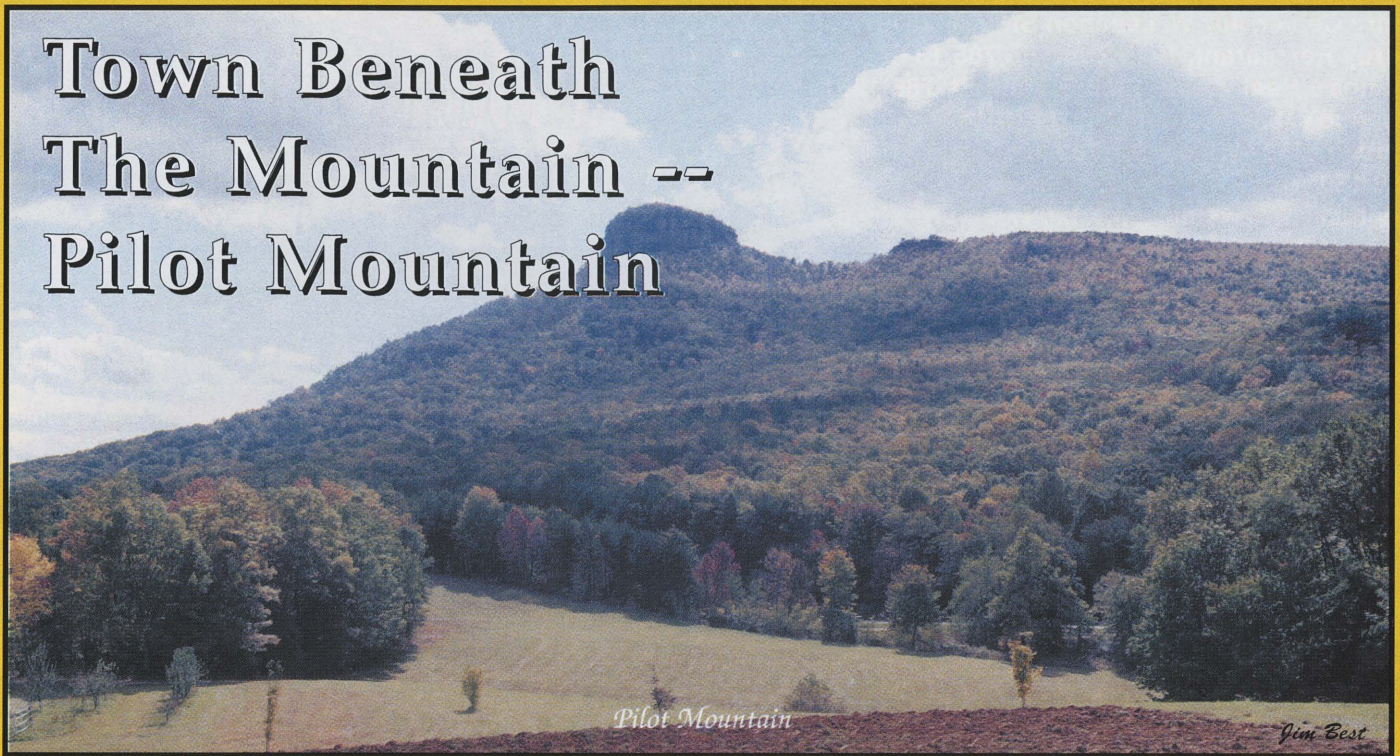
**SURRY
TELEPHONE
MEMBERSHIP CORPORATION**



"Owned By Those We Serve"

**819 East Atkins Street
Dobson, NC 2701
910-374-5021**

Town Beneath The Mountain -- Pilot Mountain



From throughout most of Surry County, the looming shape of Pilot Mountain can be seen, rising above the surrounding piedmont and the town that shares its name.

Pilot Mountain was one of the first landmarks noted in the early settlement of the county, and it is not surprising that the town near its feet should choose the same name.

Like much of Surry County, Pilot Mountain is home to tree-lined streets and gracious older homes, as well as more modern conveniences. Despite its small size, the town is home to industries, businesses, and the public services found in larger areas, as well as one of the county's three high schools and a middle school.

Located just off U.S. 52 between Mount Airy and the Stokes County line, the town is poised on the brink of more growth, with recently upgraded public utilities to serve it. The new interstate highway from I-77 will join U.S. 52 just north of the town, providing easy interstate access and making the town the municipality closest to the interchange.

The town is already home to East Surry Industrial Park, which houses three industries and a day care center with room for about 100 children. All three of the industries at the site are examples of the diversification that Surry County relies on as protection against depressions in its textile base. Progressive Technologies assembles battery packs to provide auxiliary power units; Silk Screen Services designs artwork for shirts, hats, jackets, bibs, and other textiles; and Nor Pak packages garments and other items. Pilot Mountain is also home to two textile operations at other sites.

As Surry County's third municipality, Pilot Mountain also boasts a public library branch, a recreation center, its own town board of commissioners and police department, and its own plan for growth — a plan it is likely to see come to fruition with new roads, new faces, and new services in the coming years.



Prepared For Any Emergency

There's no such thing as a good time or place to be sick or injured; to have to deal with the trauma of an automobile accident or fire; but when these local and personal disasters arise, Surry County is prepared with first-rate emergency response teams and facilities for care.

The county funds a full-service emergency services department, with full funding for Emergency Medical Services and supplementary funding for fire departments through special tax districts.

Surry County is also home to the state's regional hazardous materials response team -- bringing enhanced training and top-of-the-line equipment into the county for local use as well as regional emergencies.

Mount Airy has volunteers in its rescue squad and a paid fire department organization with two stations to serve the entire city.

Volunteer rescue squads, along with the volunteer



Surry County Emergency Medical Services

fire departments, are based in many localities throughout the county, providing not only a needed service for their neighbors, but, during their fundraising, community events such as dinners, breakfasts, ham shoots, and other activities.



Surry Medical Specialists, P.A.

Charles R. Bokesch, M.D.
Internal Medicine
Cardiology

Charles G. Robertson, Jr., M.D.
Family Practice

Wade H. Marion, PA-C
Adult Medicine
Adolescent Medicine

"Serving Surry County for 30 Years"

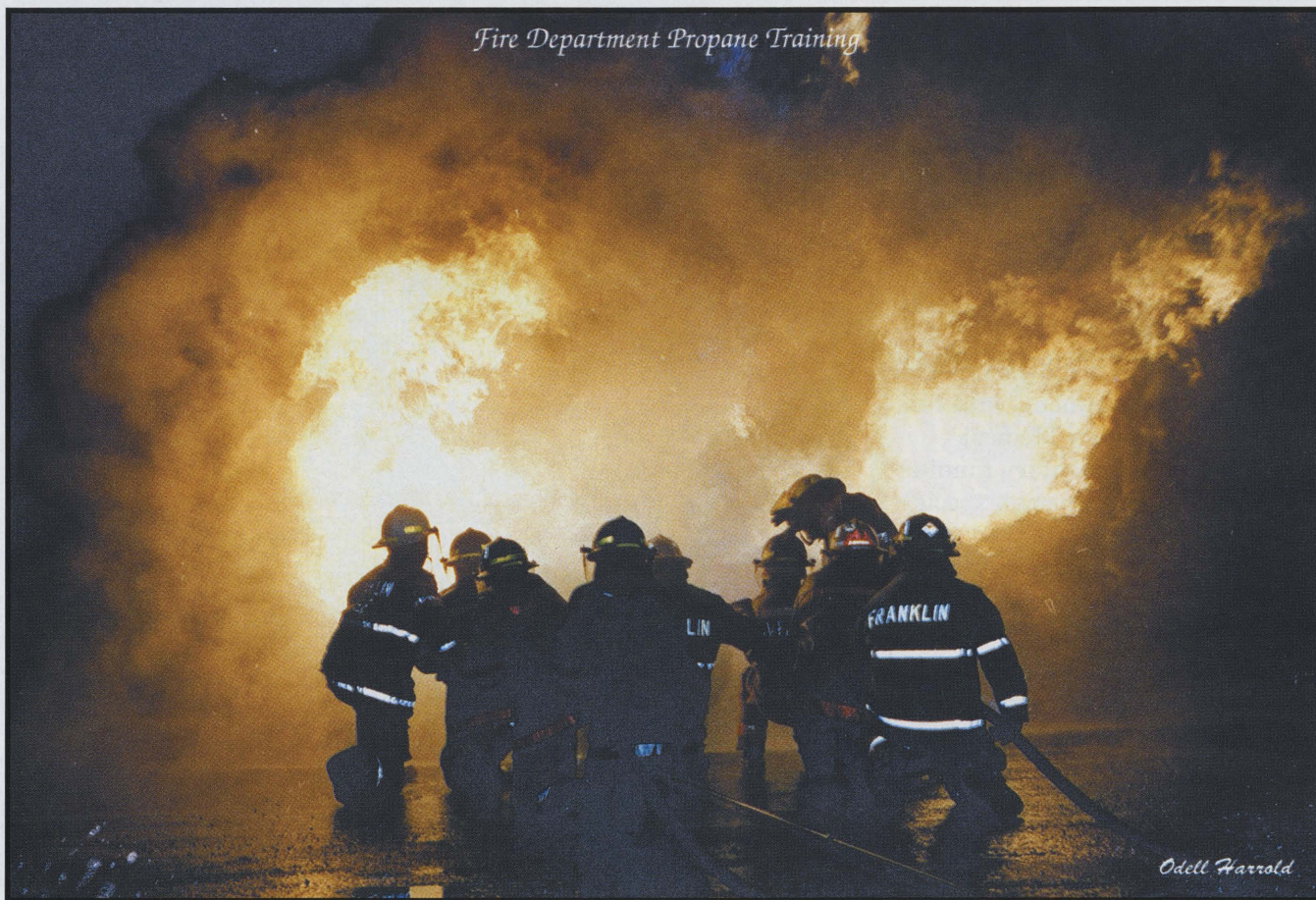
New Patients Welcomed

708 S. South Street
Mount Airy, N.C. 27030

All Insurances Filed

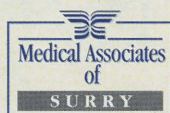
(910) 786-6146

Fire Department Propane Training



Odell Harrold

Health Care Made Easy



Pediatric Care
Cecil Thoppil, MD
Gloria King, PNP-C

Gastroenterology
Mark Appler, MD

Internal Medicine
Roger Kerley, MD

Internal Medicine/Geriatrics
Penny McDonald, MD
Joyce Perry, GNP-C

Family Medicine
Nelson Gardner, MD
Borden Hooks, MD
Joseph Jackson, MD
Deborah Lord, PA-C
Ken Lyons, PA
Edward McDowell, PA-C



Injury Diagnosis & Treatment
Health Promotion
Programs & Education
Drug Screenings
On-Site Job Analyses

Occupational Health
Nelson Gardner, MD
Edward McDowell, PA-C

**For more information or
to make an appointment,
call Medical Associates
of Surry at 719-6100
and CMI Occupational
Health at 789-6182.**



At Medical Associates of Surry and CMI Occupational Health, our goal is to make health care easy... to provide the right care in the right place at the right time for Mount Airy and Surry county employers and residents. That's why we're located in one convenient location and offer a full range of care, from pediatrics and geriatrics to occupational medicine.

Affiliated with Carolina Medicorp, Inc.

Growing Medical Community

In addition to emergency services to deal with the unexpected, Surry County also has a growing medical community and non-profit hospital -- Northern Hospital of Surry County.

The hospital works through a cooperative arrangement with North Carolina Baptist Hospital and Bowman Gray School of Medicine in Winston-Salem to provide advanced health care services to area residents. Those in need of emergency care that is unavailable locally can be transferred to Winston-Salem by AirCare medical helicopter or by ambulance in less than 30 minutes.

A technological linkup between the two facilities that allows physicians in Winston-Salem to aid local physicians in examining x-rays and making a diagnosis is just one example of the cooperative spirit that exists between the two facilities.

The hospital has about 150 beds, and a recently



renovated birthing center as well as upgraded services in chemotherapy, physical therapy, and other areas. A medical community of private physicians is also growing around the hospital for care in other areas.

In addition, the county has an active public health department which works with schools and employers to provide on-site health care in addition to the normal services of a public health department.

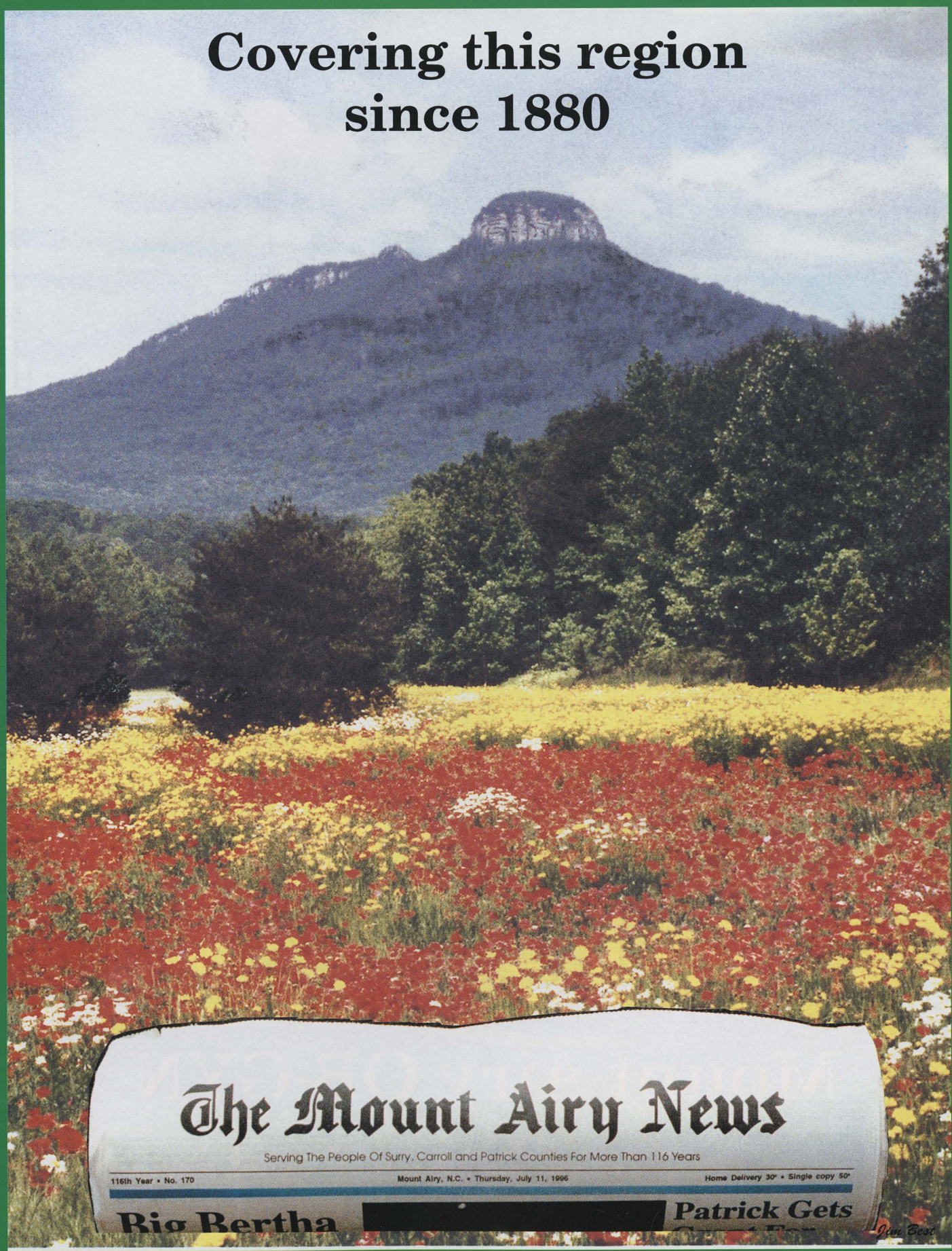
Mount Airy OB-GYN

"The Place To Be."

Obstetrics • Gynecology • On-Site Mammography
Ultrasound • Infertility • Cancer Screening

510 S. South Street, Mount Airy • 786-4522

**Covering this region
since 1880**



The Mount Airy News

Serving The People Of Surry, Carroll and Patrick Counties For More Than 116 Years

116th Year • No. 170

Mount Airy, N.C. • Thursday, July 11, 1996

Home Delivery 30¢ • Single copy 50¢

Rio Bertha



Patrick Gets

Jim Best

From Quarry To Plastics . . . Surry Has Diversified Base



North Carolina Granite Corporation

Jim Best

When the first settlers came to Surry County over 200 years ago, their goals in life were simple -- making a home and building a life for themselves in the unsettled foothills of North Carolina.

They came, initially, as farmers, building an agricultural tradition that has spanned the generations and the decades to continue in many areas of the county where tobacco, cattle, strawberries, poultry, and, in smaller numbers, other farm products still generate the income to keep family farms in operation. Even while the county has developed, Surry County still maintains a rural feel in many areas where large tobacco and corn fields line the roads that cross the farms.

But life has changed a great deal in Surry County over the intervening centuries. The discovery of granite east of Mount Airy resulted in the arrival of immigrants with skills in working the stone and helped earn the nickname "The Granite City" for the town. North Carolina Granite Corporation, established in 1889, still operates the world's largest open-faced quarry with roughly 200 employees there. According to geologists, the stone supply from the quarry will last indefinitely, even with such varied uses as curbing for northern sidewalks, blocks for local

churches, and special design items for walls and parks at the 1996 Summer Olympics in Atlanta.

The growth of the granite quarry came, as much of the area's industrialization did, with the arrival of the Norfolk-Southern railway in 1888. The railway was lured to the area to serve the quarry and in turn opened up the region with improved transportation to markets to the south.



Floyd S. Pike Electrical Contractors

Your
North Carolina
 Business AND INDUSTRY CONNECTION

SURRY

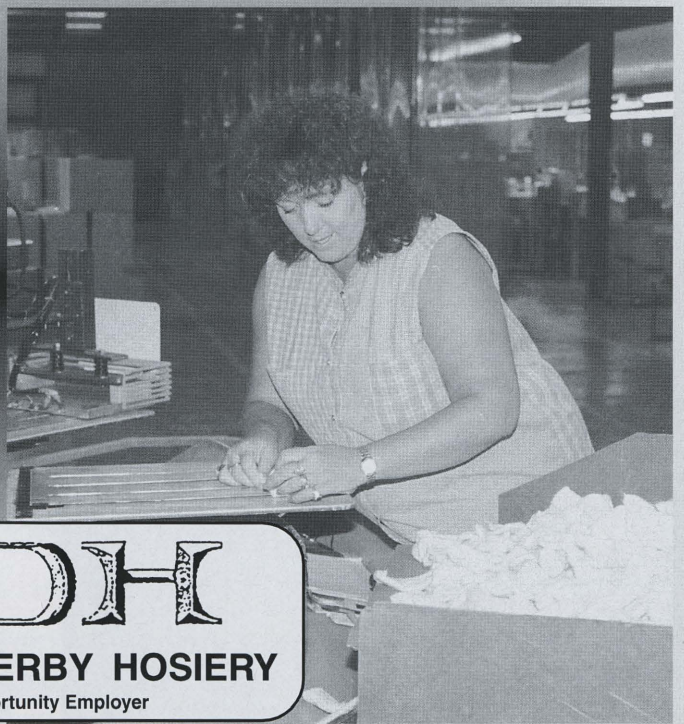
P.O. Box 1282 • Dobson, NC 27017 • 910-386-1781
 SURRY COUNTY
 ECONOMIC DEVELOPMENT
 PARTNERSHIP, INC.

**The
 North Carolina
 Granite
 Corporation**

White Mount Airy Granite

P.O. Box 151-Quarry Road
 Mount Airy, North Carolina 27030
 (910) 786-5141 1-800-227-6242
 FAX (910) 786-6984

**MAKING A DIFFERENCE IN SURRY COUNTY AND
 THE HOSIERY INDUSTRY**



KDHI
KENTUCKY DERBY HOSIERY
 An Equal Opportunity Employer



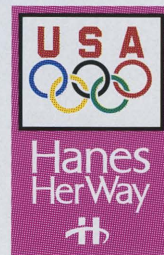
Tobacco Harvest Near Dobson

Top brands made by top people at
SARA LEE SOCK COMPANY



Champion[®]
 SOCKS

Just my Size[®]



Proud To Sponsor
 The 1996 U.S. Olympic Team
 From Head To Toe.
36USC380

SPALDING[®]



Proud To Sponsor The 1996 U.S. Olympic Team
 From Head To Toe.
36USC380

A Division of Sara Lee Corporation



Renfro Corporation, Mount Airy

THE SKY IS THE LIMIT

Inner strength,
traditional values,
connections to the
world... Ask us why
the sky is the limit
when you locate in
Surry County



Surry County Government

118 Hamby Road, Suite 329, Dobson, NC 27017 (910) 401-8201

In the last few decades, highway improvements have put Surry County on two interstate routes -- Interstate 77 and the soon-to-be completed Interstate 74 -- giving the once isolated foothills easy access to most of the Eastern United States.

As the industrial age began, Surry County turned to its natural resources, becoming in the early years a furniture manufacturing center utilizing the timber from the neighboring hills.

Through the years, however, the area's greatest resource has become its people, willing and able to work in a number of industries from the still thriving tobacco fields to the specialized machine embroidery



of Cross Creek Apparel; from the nationally-known granite quarry to Candle Corp. of America's manufacturing and distribution facilities.

Economic Stability

Since the dawn of the industrial age in Surry

*Shop Downtown
Mount Airy!*

**MOUNT AIRY
DOWNTOWN**

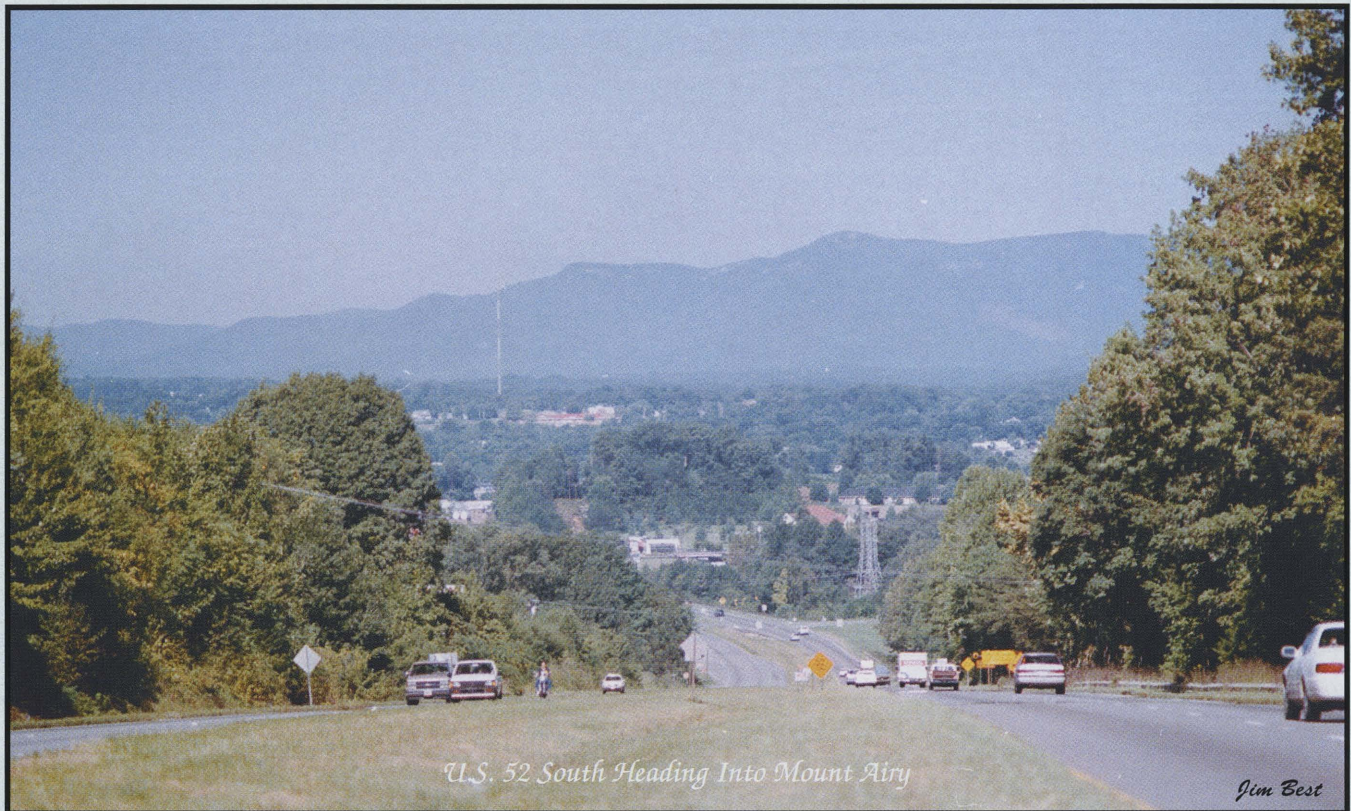
*Surry County's Most Unique and
Largest Shopping Area!*

The Area's Finest Homes....

**Are Built With The
Finest Materials From...**

**RIVERSIDE
BUILDING SUPPLY, INC.**

**511 East Pine Street, Mount Airy, NC
(910) 789-2141**



U.S. 52 South Heading Into Mount Airy

Jim Best

County, much of the economy has been dependent upon textiles, which despite recent diversification still provide a large percentage of the area's employment.

Nationally known manufacturers of knitwear and hosiery can be found in Mount Airy, with smaller facilities and subcontractors in the surrounding municipalities. Local manufacturers include Kentucky Derby Hosiery, Cross Creek Apparel, Pine State Knitwear, Renfro Corp., Spencer's Inc., and Sara Lee, producing everything from knit sportswear to sweaters and infant wear. Smaller textile plants provide support work and subcontract jobs for the larger facilities, doing such projects as printing material or finish work on items.

But other well-known industries can be found here as well. Hamilton Beach/Proctor Silex employs around 1,000 at a toaster manufacturing facility here and many visitors to the town often receive a "homemade" toaster-oven as a gift to remember the city.

The county's industries, however, aren't limited to furniture, textiles, and toasters, although those long-term staples have provided a sound base on which to build. Now the local economy plays home base to such growing companies as Floyd S. Pike Electrical Contractors employing over 2,500 people in all areas of electrical construction; Leonard Building, manufacturers of wooden and aluminum outbuildings, truck tops and other automotive accessories; Insteel Industries, manufactures of wire and steel products; Candle Corp. of America, which has a manufacturing

facility operating and a distribution center under construction in Elkin; John S. Clark Company Inc., one of the major engineering firms in the state; Wayne Poultry with feed plants and a processing operation in Dobson; Weyerhaeuser, creating structural panels in Elkin; and three plastics manufacturers located in Mount Airy and Pilot Mountain.

Agriculture Remains Strong

Despite the county's growth and the abundance of manufacturing and other jobs, Surry County also maintains a healthy agricultural economy producing everything from poultry and feed to tobacco and strawberries.

Most of the county's larger farms are located in the southwestern section of the county, where rolling hills are covered with corn, tobacco or hay crops. Other farms throughout the county raise smaller crops, such as pick-your-own strawberries, cabbage, or other garden produce. During the harvest season, roadside stands and produce markets around the area offer some of the best in locally grown crops. A weekly farmers' market in Mount Airy, open each Saturday morning, gives smaller growers an opportunity to sell their wares and local shoppers a shot at farm-fresh items.

Farmers also raise beef cattle in free-grazing and feed lot operations, and black and white milk cows are easily found grazing in the fields between their trips to the milk barn. Long, narrow buildings, many with

growing market.

Room To Grow

Despite a healthy economy, Surry County and its municipalities aren't content to sit back and relax, but continue to work to bring additional industries to the county. With Interstate 74 under construction, along with three large interchanges, and Interstate 77 offering three interchanges of its own in the county, the area is poised for development and eager to meet industrial and business needs.

The primary area for development will be a 400-acre industrial/commercial site near the I-74/Highway 601 interchange just south of Mount Airy. The county and city are preparing the site with commercial properties at the front and more than 300 acres set aside for industrial development. Water and sewer lines are being extended to the site as well.

For those interested in the area, but not bound for

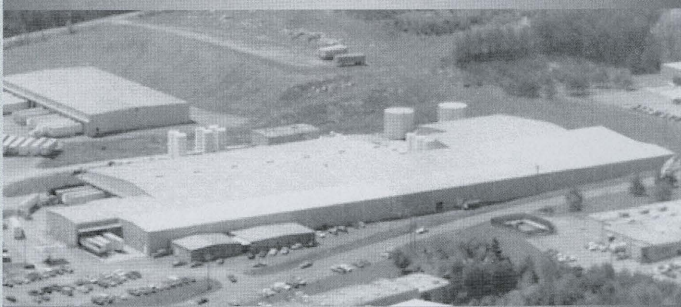


Westwood Industrial Park

Jim Best

that site, there are other industrial parks and developments both in Mount Airy and near other municipalities as well. Elkin is also developing a site near the I-77 interchange, and Pilot Mountain hopes to capitalize on the new interstate nearby with more growth at its own industrial park.

Quality Urethane Foam-In Place Systems From North Carolina Foam Industries, Inc.

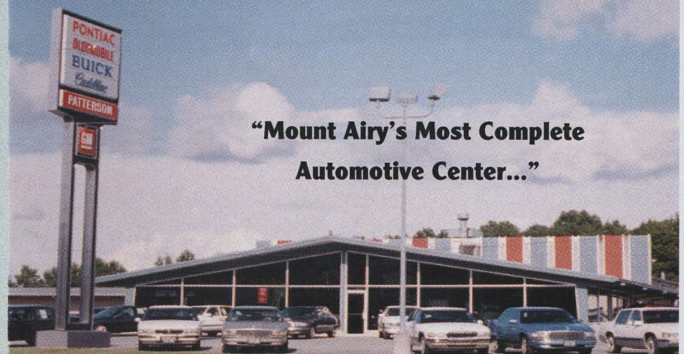


North Carolina Foam Industries
P.O. Box 1528 • Mount Airy, NC 27030

No Dealer Offers More

...More Makes
...More Models
...Better Service

"Mount Airy's Most Complete
Automotive Center..."



PATTERSON

Pontiac • Buick • Olds
• Cadillac • GMC Truck

Hwy. 52 By-Pass, Mount Airy • 786-2181

Factory Outlet

Drastic Reductions
When Compared
To Retail Stores!



**PINE
STATE
OUTLET**

Our factory is right
across the street... That
means you save more!

Fredrick Street · Mt. Airy, NC · 910-789-9437

Come to Mount Airy for Outlet Buys For The Whole Family

Some people are ahead of the game before they start.



CrossCreek®

Visit the Cross Creek Outlet store at 186 Independence Blvd., Mt. Airy NC (910)786-5214



N.C. 89 Winding Through Lowgap

Jim Best

Spencer's **FACTORY OUTLET**
 INFANT AND CHILDREN'S WEAR

The Leader In Brand Name Children's Wear For Over 70 Years!



Since 1926

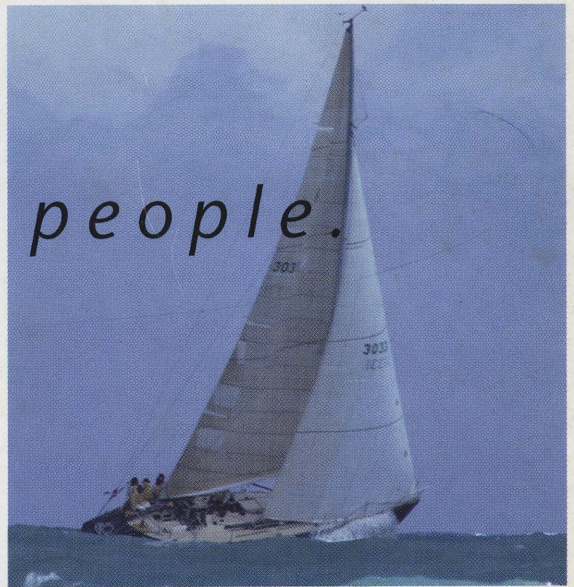
Excellent Prices On First Quality,
 Close-Outs And Irregulars!

Corner of Renfro St. & Hines Ave.
 (Near Low's Foods)

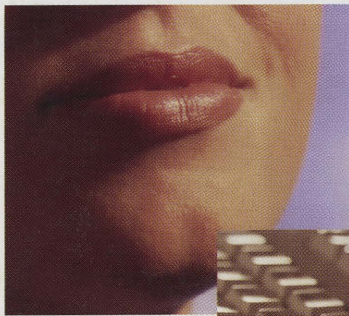
910- 789-2677

Store Hours:
 9 a.m. - 6 p.m. Mon. Sat.

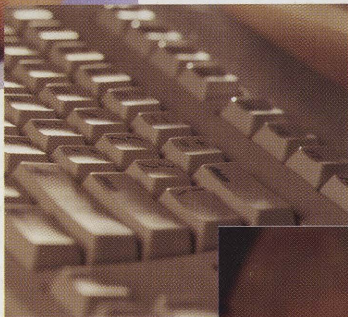
The future is all things to all people.



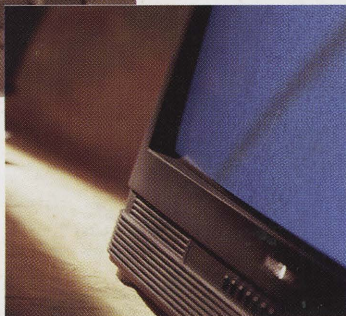
With your local Sprint company, the world can be a beautifully uncomplicated place for your business to explore.



Voice



Data



Video

We offer everything you need to move past the barriers of different technologies, and create a seamless flow for all of your voice, video and data communications. What lies ahead for both of us is simply fascinating.

www.sprint.com

Here's where it gets easier.SM

