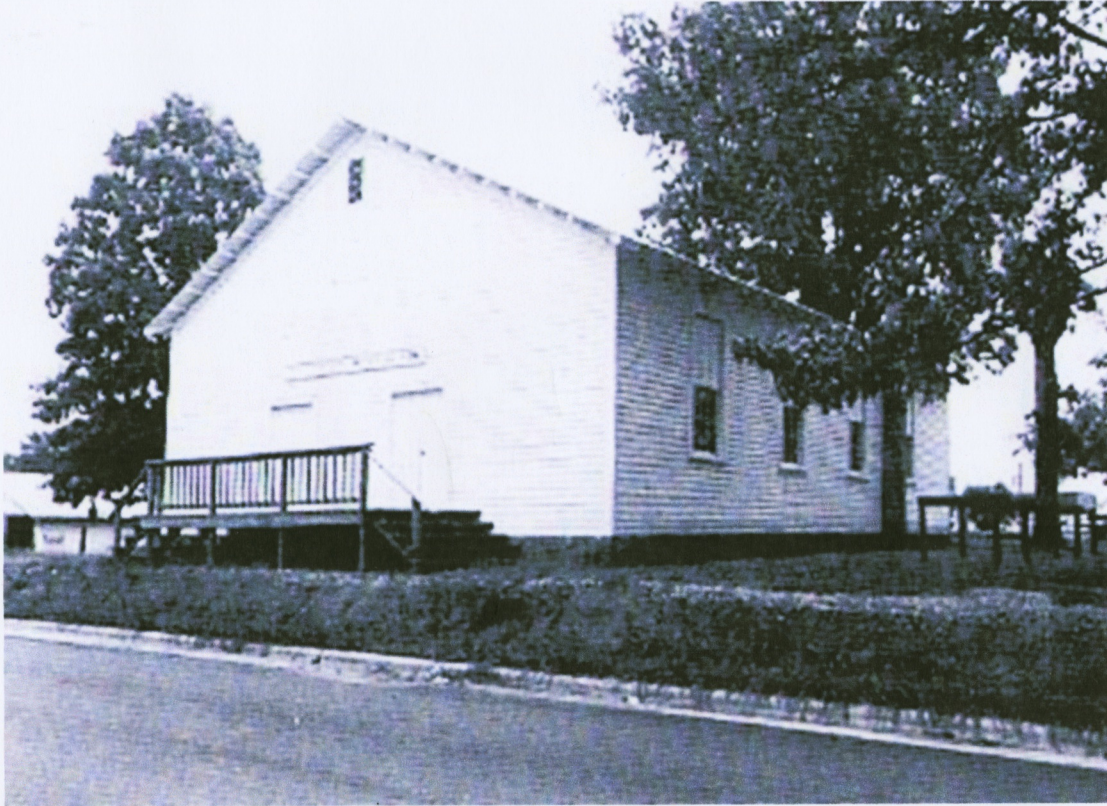


## Pilot Mountain Primitive Baptist Church



**Figure 137: Primitive Baptist Church, Key Street.**

Gabriel Osborn (Dock) Key came to Pilot Mountain from the Eldora community. He along with other interested individuals established the Pilot Mountain Primitive Baptist Church in 1896. The church building was a frame and timber construction build on the back portion of property located on the northeast corner of Main and Key Streets. The structure has undergone several changes through the years, but remains basically the same. The church originally had a bell tower that faced West Main Street. It can be seen Figure 70.



**Figure 138: 1933 Stone Family Reunion in front of the Primitive Baptist Church. Notice the single door on the front of the building and the entrance on the right side.**