

SQUIRE'S VOICE

Surry Community College

P.O. Box 304; Dobson, N.C.

Tuesday, November 12, 1985

Vol. XIX No. 1

SQUIRE'S VOICE welcomes readers

The staff of the SQUIRE'S VOICE would like to take this opportunity to WELCOME everyone to Surry Community College for the 1985-86 year. We would also like to let the students, faculty and staff know that we are here for you.

This year's paper will, hopefully, be published once every two or three months. In each issue, we will try to notify our readers of the latest information taking place on campus.

However, in order for us to succeed in our attempts, we need the support of all those at SCC. Please help us keep you informed and entertained. If there are any suggestions for improvement of the Squire's Voice please place them in the suggestion boxes located in various areas of the campus.

THANK YOU FOR YOUR SUPPORT.

The SQUIRE'S VOICE co-editors

Phi-Beta Lambda elects officers

BY SANDRA LLEWELLYN

Phi-Beta Lambda is the business club on campus, but interested persons don't have to be business majors to join the club.

This club has been on campus for over 10 years. They meet on Tuesday's or Thursday's at 1 pm in room V-206A. Annual dues are \$11. These dues help with finance expenses to attend the annual PBL convention. The club was presented with two awards at last year's convention: first place for Business Law and third place for Business Administration.

The ratio in the club is really good for men; there is only one man to every 25 women.

New officers for the 1985-86 year are: President, Wesley Wood; Vice-President, Robin Marsh; Secretary, Janet Taylor; Treasurer, Cheryl Stewart; Historian, Sandra Williams. The Parliamentarian is still to be elected.

The advisor is Mr. Sherman Layell.

Upcoming events will focus on money-raisers to help with additional club expenses. Also, a Christmas party is scheduled, but its date has not yet been set.

SCC implements new computers

BY LYNNE EDWARDS

John Collins, Dean of Career Education, proposed that the college get a new computer room and computer room and computers this year. The equipment was ordered on July 30, and has now arrived. The computers are IBM-PC'S, and are located in the Business (V) Building.

The teachers who use the computer rooms for classes are: Dwight Atkins, Mike Boing, Josephine Crawford, Jerry Eller, Paula Gupton, Diane Johnson, Carol Norman, Shelia Snow-Norman, Joe Reid, Ronnie Lee Snow, and coordinator Charles Strickland.

The classes that are offered are: EDP 100: Microcomputer Operations; EDP 101: Introduction to Computer Science; EDP 102: Computer Science Programming in BASIC; EDP 103: Computer Science Advanced BASIC; EDP 203: Computer Science Assembly Language; EDP 204: Computer PASCAL; EDP 205: Computer Science FORTRAN; EDP 206: Computer Science COBOL 1; EDP 207: Computer Science COBOL 2; EDP 208: Computer Science FILE PROCESSING; EDP 209: Computer Science Systems Analysis; EDP 210: Computerized Accounting; EDP 211: Data Processing Applications.

The languages the computers offer are: COBOL, FORTRAN, RPG, PASCAL and ASSEMBLER.

The two fields computer students can enter are BUSINESS COMPUTER PROGRAMMING and ENGINEERING TECHNOLOGY, which are both described in the College Catalog on pages 35 and 44.



The Mount Airy Chapter of the American Red Cross held a bloodmobile Wed., Oct. 23 in the SCC gymnasium. A total of 146 potential donors went through the bloodmobile station. 17 were deferred for minor medical reasons supplying a total of 128 pints of blood. Participants included 11 first-time blood donors. (Photo by Donna Burnette)

SGA sponsors Halloween contest

BY SANDRA LLEWELLYN

The Student Association (S.G.A.) has been on the SCC campus since 1966.

On October 15 a meeting was held to introduce the candidates running for club representatives. The actual election was held October 16 in the SCC cafeteria. Valid student I.D.'s were required to vote. Everyone running for office was elected.

The S.G.A. objectives are to provide members with academic credit in return for many hours of hard work. The club also helps students acquire skills that are necessary for social culturalization. Another of the club's primary goals is political organization.

Some upcoming projects planned for 1985-86 include a reasonable number of student activities such as a Christmas Dance, Spring Formal, Halloween events, concerts and student election, active participation in community-service projects, and acting in an advisory capacity to students.

The 1985-86 officers are: President, Kip Thomas; Vice-President, Brenda Allen; Secretary, Cheryl Stewart; Treasurer, Danny Bottoms.

The group's advisor is Dr. Sherry Madison.

LEO elects officers, plans activities

BY SANDRA LLEWELLYN

At 11:30 am on Tuesday, Sept. 24, the new Law Enforcement Organization (LEO) officers were elected. They are: President, Danny Bottoms; Vice-President, Donald Johnson; Secretary, April Allred; Treasurer, Jamie Huff; Parliamentarian, Kim Warden; Sergeant at Arms, Vernie Hunt.

The Club advisor is Mr. J.T. Henson.

The LEO class of Surry Community College usually meets every two weeks. Annual dues are five dollars.

Club members will be selling fruit cakes with proceeds going to pay for the annual LEO convention. These conventions aid members in understanding the new rules and regulations of the law system.

This chapter has been on campus for approximately 10 years.

Jazz competition seeks musicians

BY PAM ROGERS

The sixth annual Southern Comfort Collegiate Dixieland Jazz Competition and the National Association of Jazz Educators (NAJE) is holding its annual Dixieland Jazz band competition.

If interested, faculty members should gather six or seven of SCC's top student musicians. The students are asked to record a 20-minute audition on cassette, of their rendition of Dixieland Jazz. The cassettes must be recorded between September 1 and November 15 and received by the latter date.

Three finalists will then be selected to compete live in the "Battle of the Dixieland Jazz Bands" in Anaheim, California this January.

How will participants and their schools benefit? An all-expense paid tour of America, including public concerts and appearances, a \$1000 grant for SCC's music department, individual \$1000 scholarships for each member of the band, and much more will be awarded.

For more information, contact Carolyn Pepin or Liz Rytel, at 211 E. Ontario Street, Suite 1300, Chicago, Illinois 60611, or call (312) 280-7000. More information is also available from Miss Ring in C-129 on the SCC campus.

Winter quarter schedule set

BY DARRYL BLACK

Students should have seen their advisors October 28 - November 1 to select courses for Winter Quarter, and were advised to stay as much as possible within their last schedules.

All students who pre-registered for classes may pay their fees in the Business Office from 8 am - 4 pm November 11 - 15. (Evening students may pay from 5:45-7:15 pm Monday - Thursday).

November 22 has been designated as CHANGE DAY. Students may make changes in their schedules at this time by seeing their respective counselors in Student Services.

Registration Day will be November 26, 8-11:30 am, 1-4 pm, and 6-8 pm.

On December 2, Winter Quarter classes begin and December 13 is the Last Day to Drop and-or Add Classes.

Student Government Association means "declare your commitment"

BY SANDRA LLEWELLYN

On October 31, the Student Government Association (S.G.A.) of Surry Community College held a Halloween contest for three ten-dollar gift certificates. The categories that were judged were the funniest, the scariest, and the most original costumes.

There were seven contestants: a cat, a witch, a clown, a carpenter, an old man, an Indiana Jones character, and a punk rocker.

The winners were the old man character, DAN MEREDITH; the witch, SUZANNE FREEMAN; and the carpenter, DARA COLLINS. These were selected as funniest, scariest and most original, respectively.

The judges were Miss Pam Ring, Miss Paula Stanley, Mr. Sherman Layell and Mrs. Vonda Comer. Master of ceremony was Dr. Carlyle Shepherd.

While this contest was in progress, a few S.G.A. members were on campus, passing out small complimentary treats, while the rest of the S.G.A. were away attending a convention in Charlotte, North Carolina.

Who's behind the counter: Recognizing the cafeteria staff

BY PAM ROGERS

Have you ever wondered just who cooks those delicious meals in the SCC cafeteria?

Bev Richardson and Margaret Hardy are the two main cooks working "behind the scenes" and preparing the daily meals. Other dedicated members of the staff include Judy Cook, manager; Yvonne Hodges, assistant manager; Pat Branch, Margaret Lawrence and Betty Jo Burton.

"Monday, Wednesday and Friday are our heaviest days," Cook commented, "and it sometimes gets quite hectic with the rush of people. Even so, I love my job. I enjoy meeting people and, overall, everyone is polite and nice... I think the cafeteria is a comfortable place for everyone to gather and socialize."

Lawrence has been cooking for SCC for eight years. She said, "The students have helped out more this year than in recent ones as far as properly disposing of their trash. They're doing a fine job."

For anyone who generally skips breakfast or who just doesn't find time to eat at home, breakfast is served at SCC from 7:15-11 am. The cafeteria is open every day 6:30 am-2:30 pm.

There is also a night shift, operated by two students involved in the Work-Study Program. At that time, the cafeteria reopens 5:45-8:45 pm for those attending night

school. Sandwiches, snacks and drinks are the only items served.

A few students, faculty and staff were asked to share their opinions about school lunches and the atmosphere of the cafeteria.

Second-year college parallel student Jerry Tuttle said, "It's a convenient place to get something good to eat between classes, and you don't have to drive elsewhere to get it."

Dee Dee Wall, a student majoring in General Office Technology, added, "The food is great. The cooks are friendly and it's just like eating Grandma's home cookin'."

Kevin Hawks, first-year college parallel student, enjoys the "quick service." He added, "There's a nice atmosphere in the cafeteria and the food is good, too."

The lunchroom offers a variety of foods from burgers and fries to green beans and fried apples. In addition to fountain drinks, the lunchroom has four drink machines available for those preferring a different brand of soft drink. For those students with lighter appetites, a snack machine is also available.

Smokers who run out of cigarettes can obtain them from the cafeteria at 95 cents a pack, instead of going to a nearby store.

Mrs. Minnie Hyler, English instructor, and Pat Pauley, bookstore staff member, also had enthusiastic replies about lunches.



Pictured above (l-r) are the 1985-86 cooks: Betty Jo Burton; Margaret Lawrence; Margaret Hardy; Yvonne Hodges, assistant manager; Bev Richardson; Judy Cook, manager; and Pat Branch. Photo by Tammy Corder

Blue Ridge Parkway celebrates anniversary

BY TAMMY CORDER

September 11 marked the 50th anniversary of the Blue Ridge Parkway, a modern wilderness road covering the crest of the Blue Ridge Mountains. The Parkway stretches through Virginia into North Carolina, and ends at the top of the Great Smoky Mountains.

The idea for the Parkway was implemented by Harold Ickes, Secretary of the Interior. The main objective was to preserve the raw beauty of the mountains with roads of horizons that ran parallel to the range.

The project began in 1935. The first 12-mile section started at the Lowgap-Sparta Road near Cumberland Knob. Many of the men who began the project came from the unemployment lines of Alleghany County. Almost 90 percent of the labor force was comprised of mountain men from that area.

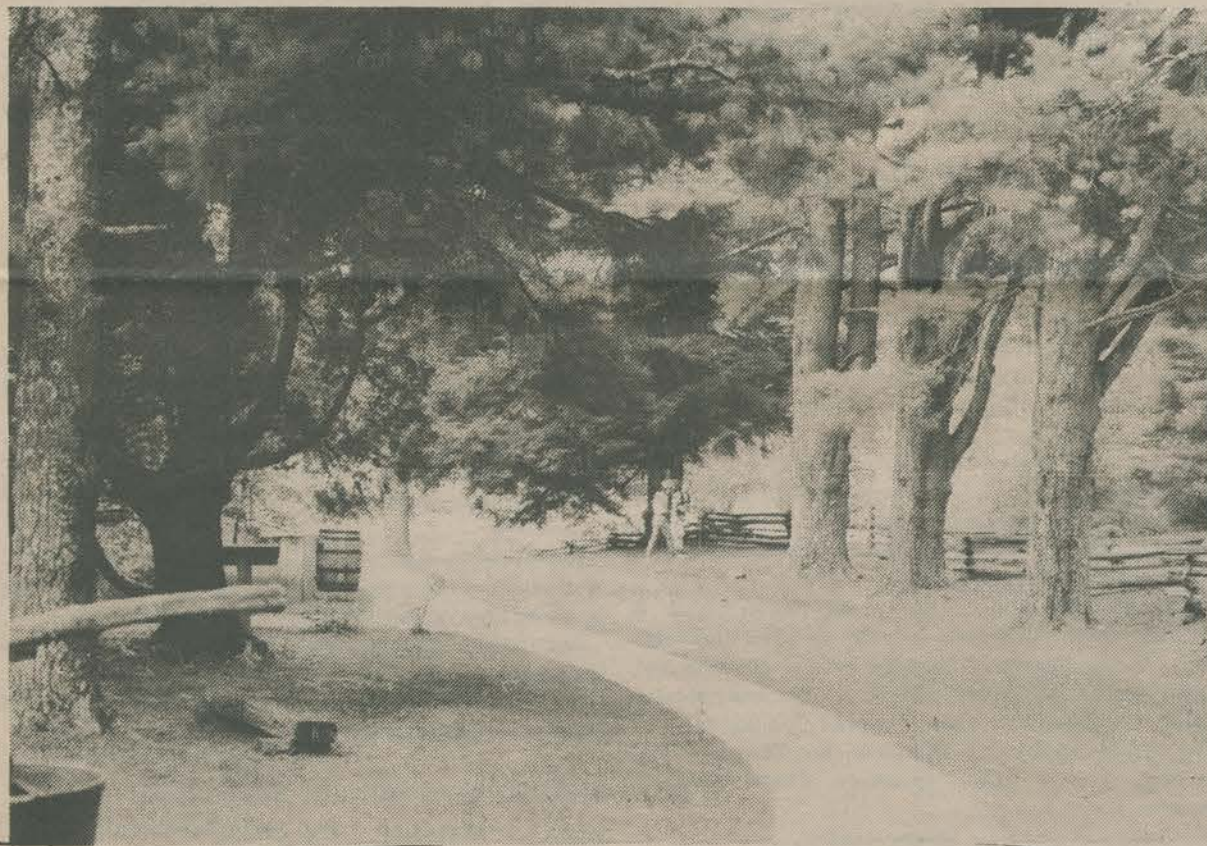
Construction on the Parkway was slowed by World War II. Later, disputes with the Cherokee nation caused the original route to be moved to the northwest edge of Cherokee and end at the foot of the Smokies. Consequently, the section of the Parkway near Asheville was not completed until the 1960's.

The final section concentrates on the Grandfather Mountain area and includes the Linn Cove Viaduct. This 1,243-foot S-shaped, precast, segmental bridge is the first of its kind to be built in the United States. The target date for completion is 1987.

This special legacy, the Blue Ridge Parkway, holds an abundance of scenic treasures for both area residents and travelers. In late September and early October, the mountains resemble "Grandma's quilt" as Mother Nature paints her landscape with rich hues of yellows, oranges and reds, complemented with vibrant greens and blues.

In 1984 alone, over 19 million visitors enjoyed the area's beautiful National Park system. Camping, hiking and picnicking are only a few of the activities that are constantly available. Doughton Park, near milepost 240, is known for excellent camping accommodations and hiking trails. Grandfather Mountain, located at mileposts 121.1 - 291.9, offers everything a vacationist could ask for. There, as well as in many areas around Fancy Gap and U.S. 52, one will find craft shops and country stores that thrive to keep the handicrafts and heritage of the mountain people alive.

To many of the area residents, the Blue Ridge represents a shelter from Old Man Winter's breath. But, for those who look again and take the time to travel the Blue Ridge Parkway, there exists a slice of land that has been allowed to escape the scars of man's cultivation. In the past 50 years, the Parkway has become a part of the scenery, not an intruder. It is evidence of how well and how intelligently man can preserve his precious earth with minimal effort.



Visitors take advantage of the glorious beauty of the Parkway. (Photo by Jason Morris)

Fall brings freshmen to Surry Community College campus

BY TAMMY CORDER

For various reasons a new fall quarter at Surry Community College always brings a massive wave of strangers, most commonly known as "freshman," to the SCC campus.

Everyone has been a freshman at the high school or college level. Yet, what makes this classification of students different from others? Is it the fact that they are new faces for everyone to see or that they seem so out of place as they dart about campus looking for various classes?

From the freshman's point of view, beginning a new school year at the college level differs somewhat from those freshman days in high school. First, the seniors are not lurking around every corner with class rings on their hands, wanting to "knock knots on heads," nor are there assigned monitors to see that everyone is in class when he or she should be. The freshman finds that he has a newborn

freedom; yet, he has no idea of what to do with it.

When polled on their ideas, the following freshman expressed these opinions.

Marianne Farmer: "In college you have more freedom and you meet a variety of people from different schools. There is more time from class to socialize."

Leesa Moxley: "You have to take more responsibility upon yourself for your studies."

Edwin Hull: "There is more freedom and more atmosphere."

Jeanean Edwards: "There is more freedom. You get to lay out class and you are more on your own. You get to meet different people, too."

Karen Speaks: "I have more homework to do, but it is better because I have breaks between classes for social time. I also get to meet different people."

Hinshaw recommends intramural programs to provide athletic competition for students, faculty

BY LYNNE EDWARDS

Since intercollegiate basketball was removed from the Surry Community College curriculum in 1983, few sports are available on the SCC campus. In order to provide athletic competition for both students and faculty, Paul Hinshaw recommended that an intramural volleyball league be established.

The principal rules are: 1.) No street shoes on the basketball floor; 2.) a student must be carrying five credit hours to be eligible to participate in the volleyball program; 3.) a team must win two out of three games; 4.) time limit games will be played if necessary; 5.) only six players may be on the court during play; 6.) a team will forfeit the game if it cannot have six players on the court five minutes after the scheduled game time.

7.) A player will be disqualified for any act of unsportsmanlike conduct; 8.) trophies will be awarded to members of the championship team; 9.) the champions will be the regular season winner; if there is a tie, there will be a playoff series; 10.) an official roster will be turned in at the first game.

TEAMS AND THEIR COACHES

COMER'S BUNCH	Kevin Comer
DEMOLITION DUCKS	Dwain Hunt
DOO-BEE'S FACULTY	Miles Wilmoth Carlyle Shepherd
GOOBIES	Richard Bernabe
THE LADIES	Tracie Creed



The Ladies face a recent opponent in the team's struggle to win their first volleyball match of the season. Their efforts were demised, however, by a more powerful student team. (Photo by Donna Burnette)

Athletic department provides intramural tennis

BY LYNNE EDWARDS

Although intercollegiate basketball was removed from the Surry Community College campus a few years ago, students are still given an opportunity to participate in an intramural tennis program, which was established after Mr. Paul Hinshaw proposed the idea in 1983.

The following rules apply to all participants: A student must be carrying a minimum of six quarter hours; a match consists of the best two out of three games; all matches must be completed by the date listed on the schedule, or they

will be forfeited; all match scores must be verified and turned into Coach Hinshaw's office upon the conclusion of each match; the winners of the regular season play will then participate in a single elimination tournament; the champion will receive a trophy.

If players have problems contacting their opponents, Hinshaw will assist in scheduling the match.

Standard UNITED STATES LAWN TENNIS ASSOCIATION rules also apply to all matches.

Women's Intramurals

October 21	October 28
Lisa Dollyhigh	Lisa Dollyhigh
BYE	Kim Young
Kim Young	Kim Young
Marie Fowler	Pam Cook
Pam Cook	Pam Cook
BYE	Vicky Hilton
Vicky Hilton	Vicky Hilton
BYE	Carolyn Collins
Carolyn Collins	Carolyn Collins
BYE	Lyn Gamble
Lyn Gamble	Lyn Gamble
BYE	Sandra Journey
Sandra Journey	Sandra Journey
Tracy Hooker	Michelle Mason
Michelle Mason	Michelle Mason
BYE	

Men's Intramurals

October 21	October 28
Stewart Mauck	Brian Edwards (6-1, 7-6)
Brian Edwards	Dwain Hunt
Dwain Hunt	Dwain Hunt
Richard Hardy	Klee Liles (6-1, 6-4)
Klee Liles	Klee Liles (6-1, 6-4)
Doug Holt	Brian Warren
Brian Warren	Brian Warren
Ted Williams	Charles Collins
Charles Collins	Charles Collins
Jeff Denny	Brian Thacker
Brian Thacker	Brian Thacker
Jeff Powell	Brad Smith (6-0, 6-0)
Brad Smith	Brad Smith (6-0, 6-0)
Chad Eller	John Gammons
John Gammons	John Gammons
Kevin Shinault	

These are a list of the teams and the coaches of each of the teams. The schedule is printed below. The last two games and players will be listed in next issue.

Date	East Court	West Court	Time
October 15 (Tuesday)	Doo-Bee's & Comer's Bunch		
	Goobies & Demo Ducks	2:30	
	Faculty & The Ladies		
	Demo Ducks & Comer's Bunch	3:30	
October 17 (Thursday)	Ladies & Doo-Bee's Faculty & Comer's Bunch	2:30	Comer's Bunch & Demo Ducks
October 22 (Tuesday)	Ladies & Demo Ducks Faculty & Comer's Bunch	2:30	
	Doo-Bee's & Faculty	Comer's Bunch & Ladies	3:30
October 24 (Thursday)	Goobies & Doo-Bee's Ladies & Faculty	2:30	
	Comer's Bunch & Faculty	Winner & Demo Ducks	3:30
October 29 (Tuesday)	Demo Ducks & Goobies Doo-Bee's & Faculty	3:30	
October 31 (Thursday)	Ladies & Goobies Comer's Bunch & Faculty	2:30	Doo-Bee's & Demo Ducks & Comer's Bunch 3:30
November 5 (Tuesday)	Ladies & Demo Ducks Goobies	2:30	Doo Bee's & Faculty Comer's Bunch & Ladies 3:30 Ladies & Goobies Faculty & Demo Ducks 4:30

The wins and losses are listed in this chart:

Comer's Bunch	7 Wins, 0 Losses
Doo-Bee's	6 Wins, 4 Losses
Goobies	4 Wins, 3 Losses
Faculty	4 Wins, 3 Losses
Demolition Ducks	2 Wins, 3 Losses
The Ladies	0 Wins, 6 Losses

Students, faculty express themselves

Welcome to the first edition of the "Expressions" page. The SQUIRE'S VOICE staff hopes you enjoy it. If any member of the student body, faculty, or staff has a creative writing work that he or she would like to contribute, please place the material in Miss Ring's mail box, or see features editor, Jennifer Barrett.

The Stranger

Who are you?
I often ask.
You never answer.
Always dark,
Forever mysterious.
Constantly you haunt
My thoughts,
Control my mind.

Why don't you speak?
Please listen.
I need to talk.
I am lonely;
Happiness has vanished.
Reality is painful,
Harsh and cold.
I climb a fantasy.

Do you know a secret?
The darkness you possess
Is an unfamiliar lyric
For the quiet finale
Of learning the truth.
It's time to reveal
Your unknown identity--
Myself.

EDWINA THOMAS



From SPRING IN SODOM

A willow tree above me,
Cool grass beneath my feet,
A smiling girl beside me--
Oh, Lord, the world was sweet!
Look, now, another couple
Are lazing where we lazed,
But will tomorrows trysting
Find all the willows razed?
The drills and wheels and shovels
Of nearby Sodom Town
Have scarred the flesh of summer green
Where summer sun beats down.
The dust of progress chokes us,
A cancer feeds our fears,
The season of the sorrows
Are on our latter years.

WARREN CHILTON

A Single Tear

A single tear is shed
As a life,
Once protected inside,
Begins to live.

The small child,
Exploring the world,
Unprotected,
Cries for his mother.

Now a young man,
Running free,
He needs no protection.
His mother worries.

On his own,
Lonely and scared,
He seeks protection
From the mother he deserted.

He now lies still;
Life is gone.
His mother is now alone.
A single tear is shed.

DONNA BURNETTE



Walk Softly

Enter into my soul and heart
But walk softly, so as not to tear me apart.
Knowing you is like hearing a mountain song--
Sweet and loving, yet solid and strong
With a steady heartbeat.
Being without you is like darkness without stars.
Time spent with you is time spent with spring sunshine
and a gentle breeze;
An autumn moonlit night in the south.
You are the tree upon which I lean,
The earth upon which I plant my roots.
May your life always be as wonderful
As mine was while I was with you.

JENNIFER BARRETTE

The Pain of Loving

I think of you all the time
And every song of love and pain rings true.
If only I could get you out of my mind
Maybe then my heart would heal, too.

I've seen you in my dreams and we were in love;
But I awaken to reality and hurt
To realize that you don't exist in my world.

If only I could get over loving you,
Then I'd be able to go on with life.
But I need another chance to prove myself to you
So that I can go on living--
Or should it be dying?

JENNIFER BARRETT

From AUTUMN IN SODOM

Last night summer perished
With all her raiment on--
The north wind sang her epitaph,
A duet with the dawn.
Still warm to touch she lies there
On Sodom's gentle hills,
Her green blood, no more pulsing,
Awaits October's chills.

WARREN CHILTON

From WINTER IN SODOM

Comes winter time and Christmas,
And ghosts are caroling,
And voices gone from Sodom
Return on mem'ries wing,
And never blest were wise men
With gifts like this to bring:
The resurrected beauty of
The old familiar things.

WARREN CHILTON

Newspaper staff offers advice to readers

Do you have a problem you just can't seem to solve? Do you need advice on a tough situation? We're not Ann Landers or Abigail VanBuren, but we can offer some simple advice to you.

In order to do so, however, we first need your help. We will be placing boxes in various spots on campus. Please drop your written problems into the advice boxes and we will choose some to publish in the school paper with our advice offered to help solve your problems.

For those situations we feel are too delicate to publish, or for those requesting private responses, we have designated a place within the office area of the C building where responses may be obtained. These answers will be placed in sealed envelopes.

We are looking forward to hearing from the Surry students and we hope we can help our fellow classmates. Thank you for your support.

Arts Council offers concert

BY PAM ROGERS

The Foothills Arts Council is offering a "double concert," which will be held November 10 at the First Baptist Church, Gwyn Avenue; Elkin, NC.

Entertainment will include two artists, pianist Bill Gouge and soprano Mary Cook. Gouge will present a solo during the first half of the show. Both artists will entertain during the second portion of the show.

Gouge presents a range of music from ragtime to classical. The purpose of the concert is to expose, firsthand, the works and personalities of creative artists who are involved in the fine arts.

Admission is free.

In Memory of Crystal Reavis

BY TAMMY CORDER

Crystal, clear and brilliant; this was Crystal Reavis. On October 21, 1985 Crystal died in a tragic automobile accident. Such a young death is hard to accept and understand.

Crystal's many friends remember her as a fun-loving young adult who liked to live life to its fullest. She will be missed immensely.

The following poem written by one of Crystal's friends, Susan Groce, makes a statement about Crystal Reavis that many of her friends share and the SQUIRE'S VOICE would like to share the poem with you.

"Crystal"

So much of life missed;
So many words unsaid;
The loss of a loved one so dear.

When will the pain stop?
The many tears shed?
We feel her presence still.

Lord, please be with this one
You lay upon your bed;
And with you, may her soul be free.

So many memories passed
Of crazy things we did.
She now has nothing to fear.

The feelings so intense--
Let words be never said
That she has died unloved.

We will remember her with love
In all the days ahead;
The loss of Crystal so dear.

SUSAN GROCE

The SQUIRE'S VOICE is a school publication written, edited and produced by Surry Community College students. The publication implements the same policies as those established by the MOUNT AIRY NEWS.

CO-EDITORS Pam Rogers
Teresa Snow
NEWS EDITOR Donna Burnette
CLUBS EDITOR Sandra Llewellyn
FEATURE EDITOR Jennifer Barrett
SPORTS EDITOR Lynne Edwards
MANAGING EDITOR
& PUBLIC RELATIONS. Darryl Black
BUSINESS MANAGER Jenny Coe
PHOTOGRAPHY EDITOR
AND ARTIST Tammy Corder
PHOTOGRAPHER Jason Morris
ADVISOR Pam Ring