

THE ELK '57

Mike Carpenter



Presenting the

Spirit of

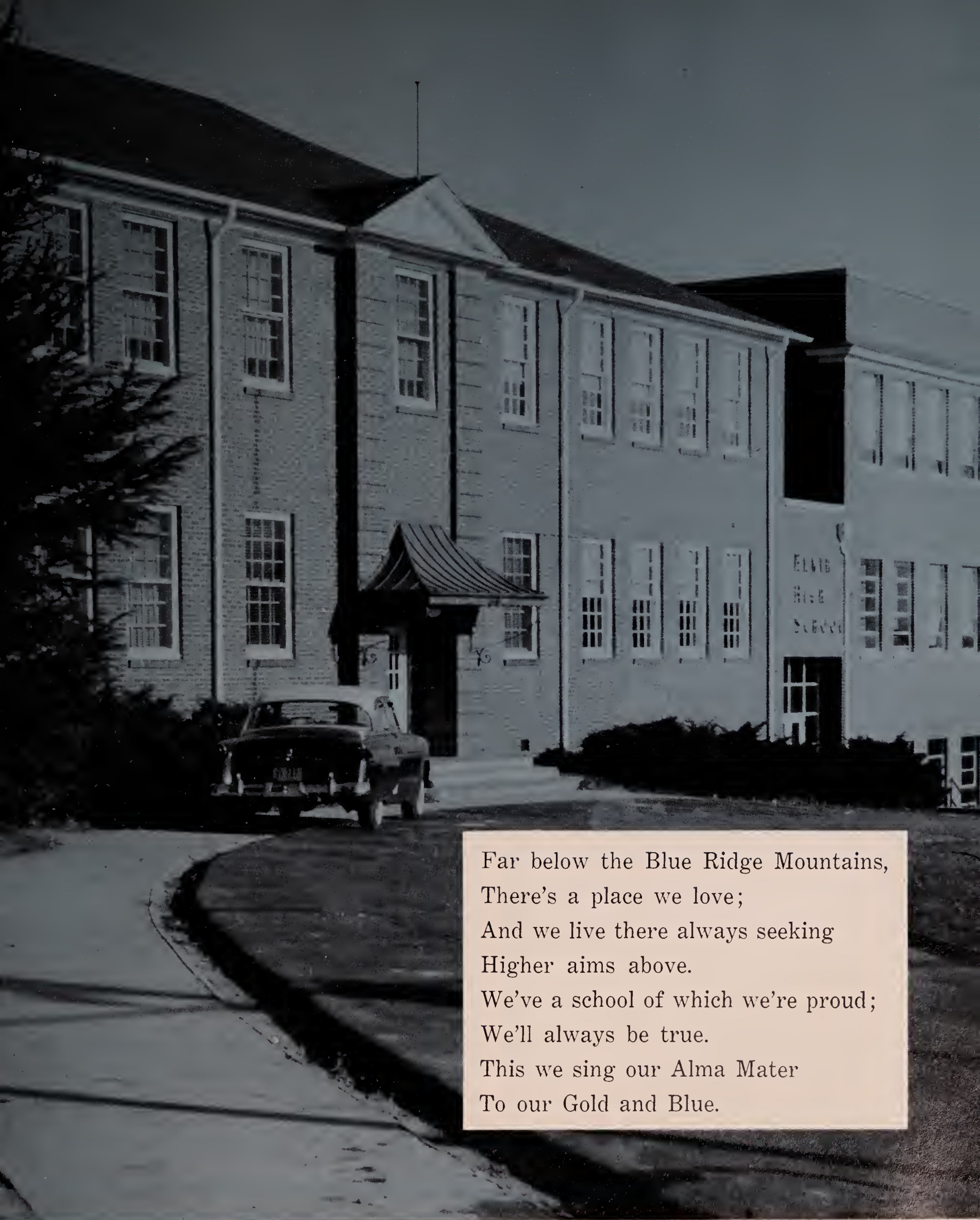
EHS



The Nineteen Hundred and Fifty-Seven

ELK

presented by the journalism class of
ELKIN HIGH SCHOOL



Far below the Blue Ridge Mountains,
There's a place we love;
And we live there always seeking
Higher aims above.
We've a school of which we're proud;
We'll always be true.
This we sing our Alma Mater
To our Gold and Blue.

ELKIN, NORTH CAROLINA



MR. CARL A. LITAKER

We gratefully dedicate

THE '57 ELK TO
MR. CARL A. LITAKER

for
helpful guidance

for
understanding
our problems

for
true friendship

for
constant inspiration



DEDICATION



A SPIRITED STORY OF OUR YEAR

Within these pages of the Elk for '57, there is something more meaningful than pictures and type . . . herein lies our "way of life." These are our very own—our school, our classmates, our teachers. Here are the spirit, the memories, the little incidents of everyday school life which live forever in our hearts and in our memories.



"For Pete's sake—where's that 'A'?"

"Republican or Democrat?"



"Soup's on!"



Last eatin' 'til lunch.



"I know I haven't lost another library book!"

A Day at Elkin High

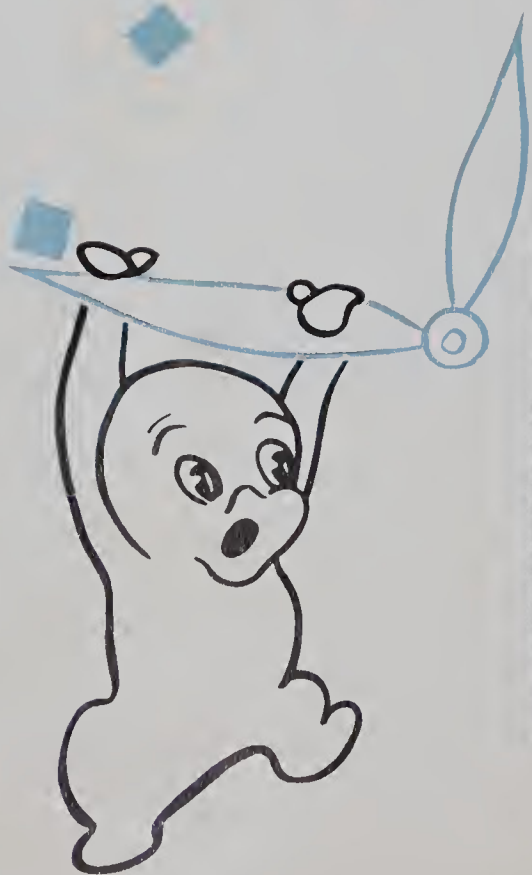
As we turn the pages of the '57 Elk, the clock moves its hands through a typical day at Elkin High School from 8:15 until 3:01, thus revealing precious memories of hours gone by.

| | |
|----------------|----|
| Administration | 10 |
| Classes | 14 |
| Superlatives | 28 |
| Activities | 44 |
| Athletics | 60 |
| Advertisements | 70 |

8:15 Bell



Morning Devotions





Classroom Assembly

Lunch breaks the day.

3:01 Bell—at last!





MR. N. H. CARPENTER
Superintendent



MR. CARL A. LITAKER
Principal



SCHOOL BOARD

Hoke Henderson, Hubert Parker,
N. H. Carpenter, Everett Holbrook,
Brady Woodruff, Richard Atkinson



ADMINISTRATION



MRS. CARL CALLOWAY
Librarian

MR. DAVID GENTRY
Band, Chorus

MRS. JOHN BARBOUR
Commercial



MRS. ADRIAN NIXON
Diversified Education, Commercial

MR. WADE WILMOTH
Eighth Grade

MR. CLAUDE ELDRIDGE
Diversified Occupations

MRS. DOUGLAS BRENDLE
Eighth Grade

MISS ETHEL WHITLEY
Mathematics

MRS. J. F. BIVINS
Mathematics

FACULTY





MRS. BURNIS PARDUE
English

MISS EMMA COOKE
English, Latin

MRS. HARDIN ROYALL
English, Spanish

MR. BLOIS GRISSOM
Eighth Grade

MISS ELIZABETH PRETTYMAN
Physical Education

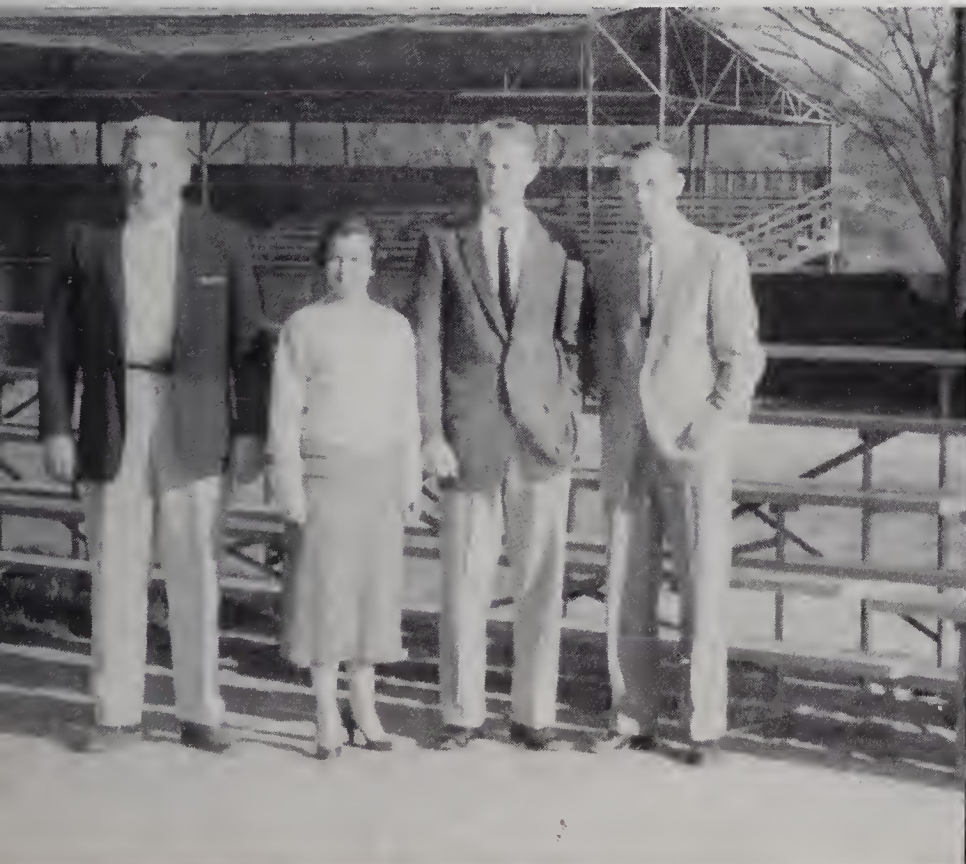
MR. HUBERT MORROW
Physical Education, Drivers' Training

MR. CLIFTON NOBLE
History

MISS MARY HOLLAND
Home Economics

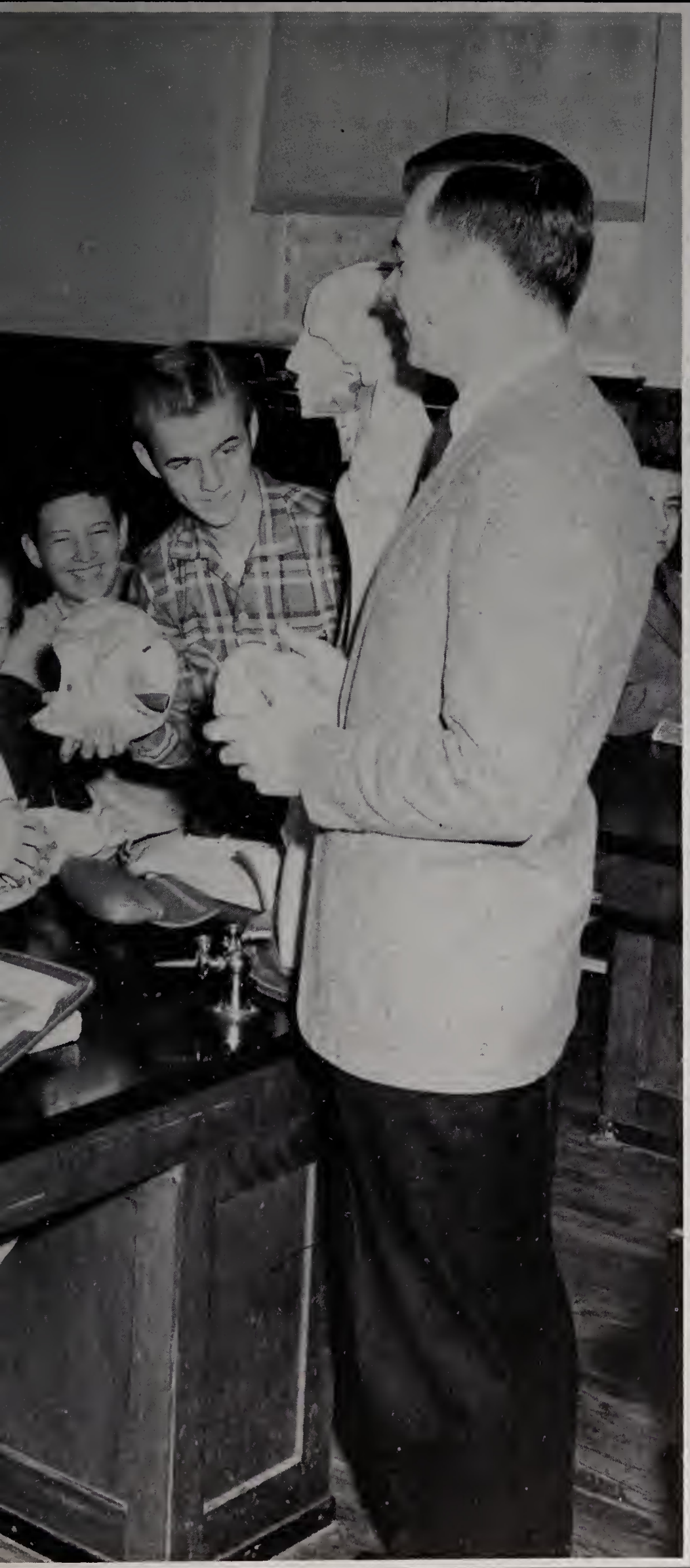
MR. BERT E. JOINES
Science

MR. E. L. FREEMAN
Industrial Arts, Science



FACULTY





C
L
A
S
S
E
S





Pat Cockerham, Secretary; Windle Yarboro, President;
Norman Stephens, Vice-President; David Pardue, Treasurer.

"SENIORS AT LAST!" was the joyous cry at E. H. S. on that September morning when our carefree vacation was interrupted by thoughts of school and classes. After the confusion of the first few weeks, we finally began to settle down to the task of studying and playing the role of dignified — (who? us?) — Seniors. Sometimes, though, our bookkeeping and English took a back seat; for with ball games, the Senior play, parties, the Washington trip, and more ball games, who had time to study?

A Senior it seems



MASCOTS

Greg West and Debbie Maines.



"Man, this sure beats plane geometry!"

has dignity and dreams.



EDWARD BLAINE ABSHER

"Race Hoss" . . . 5 second gears . . . "Ed"
Intramurals 2; D. O. Club 3,4.

PHYLLIS MARIE ALLEN

Majorette . . . short and sweet . . . diligent
Latin Club 1,2,3; Spanish Club 4; Monogram Club 1,2,3,4;
Beta Club 3, 4; Tri-Hi-Y 1,2,3,4, Treasurer 2; Majorette 1,2,3,4,
Co-chief 3,4; Intramurals 1,2; Marshal 3; Representative to
Girls' State 3.

NANCY LOUISE ATKINS

Reeves . . . pretty red hair . . . nice to know
Science Club 2; F. H. A. 3; F. S. A. 2; Glee Club 3; Intra-
murals 1; D. E. Club; 4.

EVA ARLENE BARKER

Mt. Park . . . talk . . . fun-loving . . . talk
Monogram Club 3,4; Cheerleader 1,2,3,4; Office Assistant 4;
F. H. A. 3,4; Tri-Hi-Y 1,2,4; Intramurals 1,2; Track 1,2.





FANNIE CAROL BENGÉ

A bit bashful . . . kind . . . sweet and thoughtful
F. S. A. 3,4; D. E. Club 4.

WALTER LEROY BRINEGAR

Camera-bug . . . quiet and serious . . . well-liked
Beta Club 3; Science Club 3,4; D. O. 3,4; Intramurals 1,2.

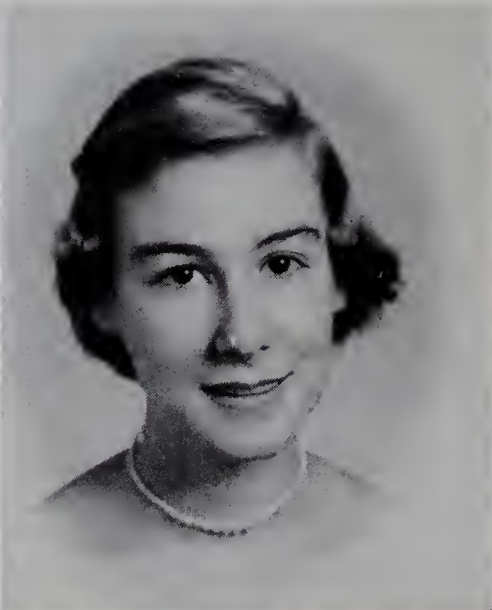
PATRICIA JO BUNNELL

Already spoken for . . . Utah . . . newcomer
Tooele High School, Tooele, Utah, 1,2,3.

BETTY RUTH BYRD

*Good things come in small packages . . .
winsome smile*

F. H. A. 2,3,4; Reporter 3; F. S. A. 3,4, Treasurer 4; Glee Club 4; Library Assistant 4.



DONALD VANCE BYRD

Don . . . Mac's . . . admirable . . . gets around
Football 1,2,3; Glee Club 1; Hi-Y 2,3,4; D. E. Club 4; Intramurals 1,2.

IMA LOU BYRD

James Dean fan . . . rush, rush . . . Rose's . . . gay
F. H. A. 4; F. S. A. 3,4; Tri-Hi-Y 4.

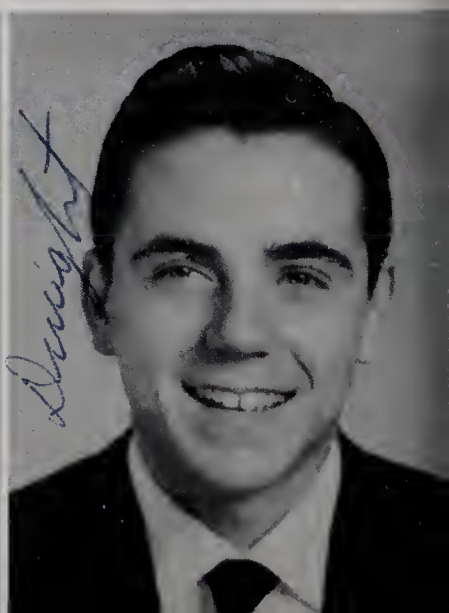
SENIORS . . .

NEVETTE MICHAEL CARPENTER

Vicki . . . "11" . . . Tri-captain . . . wise cracks
Hi-Y 2,3,4, Reporter 4; Monogram Club 2,3,4, Treasurer 4; Beta Club 4; Football 1,2,3,4, Tri-captain 4; Basketball 3,4; Advertising Manager of THE ELK 4; Student Council 3; Delegate to Boys' State 3; Class President 1; Golf 1,2,3,4; Latin Club 1,2; Track 2; Intramurals 1,2.

DWIGHT LESTER CASS

Short . . . Hot-Rod fan . . . loves racin' and cars
4-H Club 1,2,3; Band 1,2; D. O. Club 3,4; Intramurals 1,2.



MELBA MARIE CAUDLE

*Home Ec. . . . quiet (sometimes) . . .
sweet disposition*

F. H. A. 1,2,3,4, Parliamentarian 2, Vice President 3, President 4; F. S. A. 4; D. E. 4; Intramurals 1,2.

NANNIE SYBRILLA CAUDLE

Sweet and silent . . . true friend . . . willing worker

F. H. A. 1,2; Class Treasurer 2; Class Secretary 3; Beta Club 3,4 Tri-Hi-Y 2; Feature Editor of THE ELK ANTLER 4; Student Council 4, Secretary 4; Senior Superlative.



CECIL FRANKLIN CHIPMAN

"Hoppy" . . . Reeves . . . tall and quiet

Hi-Y 1; D. O. Club 3,4.

PATTY ANN COCKERHAM

Cute wink . . . Mt. Park . . . vivacious and loads of fun

Class Secretary 4; Monogram Club 3,4; F.H.A. 3,4, Secretary 3, Chaplain 4; Spanish Club 3; Tri-Hi-Y 1,4; Cheerleading 1,2,3,4; Office Assistant 4; Homecoming Attendant 4; Senior Superlative Intramurals 1.

JOSEPH PACHAL COCKERHAM

M. P. H. S. . . . full of mischief . . . witty . . . blond
Mountain Park High School 1,2,3.

EDWARD DARNELL COLLINS

Wilkesboro . . . fun loving . . . friendly

4-H Club 1,2,3; D. O. Club 4; Intramurals 1,2; Football 2.



SENIORS . . .



LINDA ANNE COOPER.

Likes Magdalene . . . 4'11" . . . California . . . lively

F. H. A. 4; Glee Club 3; Intramurals 1,2,3; Spanish Club 3; Track 1,2; Tri-Hi-Y 4.

HATTIE MARIE COUCH

Pretty hair . . . shy smile . . . music lover

Band 1,2; D. O. Club 4.

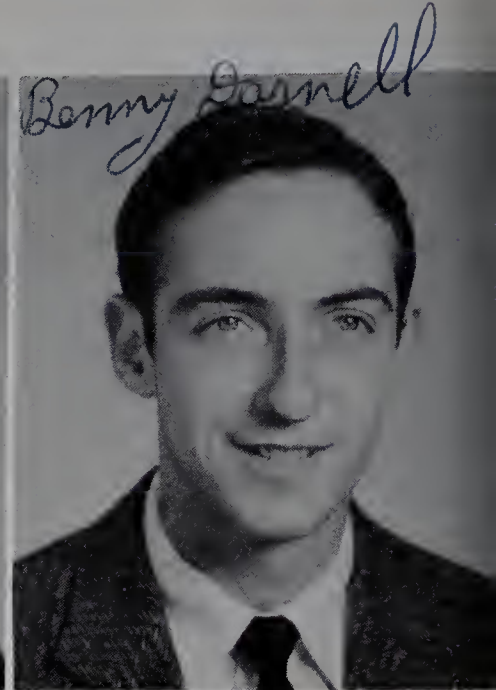


LINVILLE PHILLMORE COUCH
"Phil" . . . camera bug . . . physics and stuff
Band 1,2,3,4, Drum Major 4; Track 2,4; Science Club 3,4,
President 3; Photography Editor of THE ELK 4

HELEN LOUISE CRANFORD
Big, brown eyes . . . personality plus . . . pickles
Latin Club 1,2,4, Secretary 2; Tri-Hi-Y 1,2,3,4, Reporter 1,
Secretary 2, Co-Chaplain 4; Monogram Club 2,3,4; Band 1,2,
Secretary 2; Beta Club 3,4, Delegate to Beta Club Convention
3,4; Basketball 2; Cheerleading 1; Class Secretary 1; Office
Assistant 4; Interclub Council 2,4; Assistant Art Editor of
the ELK ANTLER 4; Editor-in-Chief of THE ELK 4; In-
tramurals 1,2,3; Interstate Tri-Hi-Y Conference 1,3.

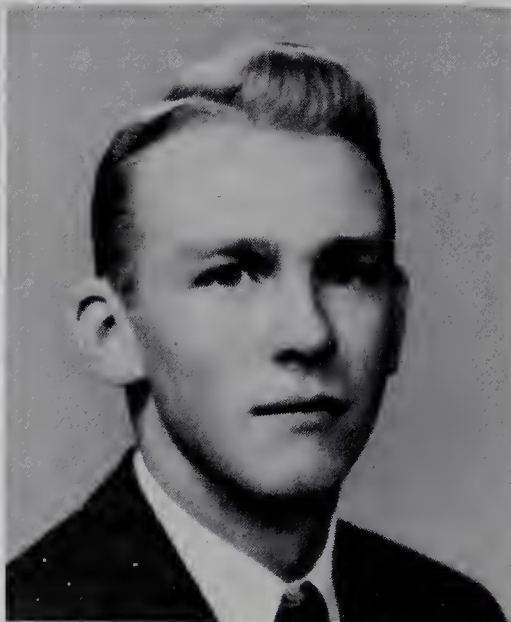
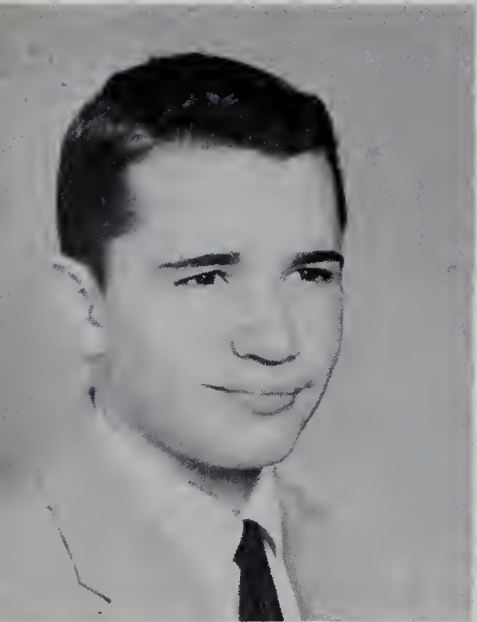
GARVEY MONROE DAMERON
Honest . . . "Elvis" . . . hard worker . . . likeable
4-H Club 1,2,3; D. O. Club 4; D. E. Club 3; Track 1,2.

BENNY LEE DARNELL
Good guy . . . dependable . . . considerate . . . kind
Bus Driver 4.



WILLIAM HAMPTON DAVIS
"Little Bill" . . . loves bridge . . . sports enthusiast
Tennis 1,2,3,4; Monogram Club 2,3,4, Chaplain 4; Intramurals
1,2; Student Council 4; Hi-Y 2,3,4; Latin Club 1,2; Band 1,2;
Beta Club 3,4; Sports Editor of THE ELK ANTLER 4; Mar-
shal 3, B. S. A. 1,2,3,4, Senior Crew Leader 4.

BILL HENRY DAVIS, JR.
"Big Bill" . . . loves baseball . . . Linda
Monogram Club 4; D. O. Club 4; Baseball 1,2,3; Track 1;
Intramurals 1,2.



JAMES ALAN FINNEY
*Jim . . . mischief . . . good natured . . .
unrationed friendliness*
Monogram Club 4; Hi-Y 2,3,4; Beta Club 3,4; Spanish Club
3,4, President 4.

MARY EVELYN GENTRY
*Love that math . . . diligent worker . . .
easy to get along with*
F. H. A. 1,2,3,4, Secretary 2; County Chaplain 3; Library
Assistants' Club 2; Spanish Club 3,4; Beta Club 3,4; F. S. A.
3,4; Student Council 4; Intramurals 1,2; Assistant Advertising
Manager of THE ELK 4.



SENIORS . . .

MACK ALLAN GENTRY

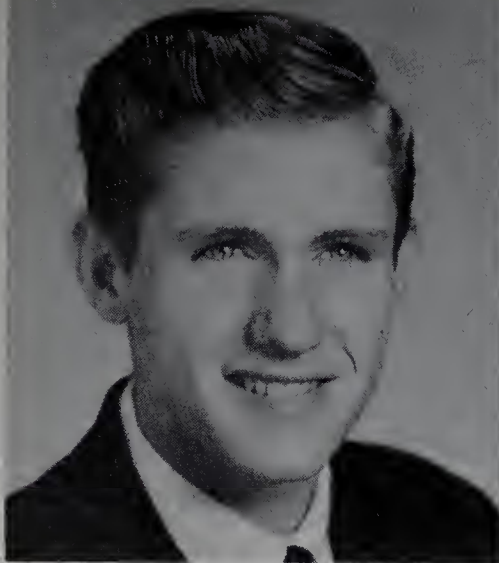
Hard worker . . . carpenter . . . dependable

D. O. Club 3,4.

MILDRED DEAN GENTRY

Dimples . . . artistic . . . cheery charm

Mountain Park High School 1; Exchange Editor of THE ELK ANTLER 3,4; F. S. A. 4; Intramurals 2,3; Office Assistant 4; Glee Club 3.



PATRICK REAVIS GUYER

"Pat" . . . friendly . . . good physique

Latin Club 1,2,3; Hi-Y 2,3,4; Football 3,4; Science Club 2; Track 4; Intramurals 1,2,3; Business Manager of THE ELK ANTLER 4; Glee Club 4.

ELIZABETH CAIN HARPE

Thoughtful . . . small and smiling . . . good sport

Intramurals 1,2; Spanish Club 3,4; F. S. A. 3,4, Vice President 4; Tri-Hi-Y 4; Glee Club 4.

WAYNE THOMPSON HARRIS, JR.

Romeo II . . . big feet . . . "speedo" . . . nut

Class Vice President 3; Leaders' Club 1,2,3; Hi-Y 2,3,4, Vice President 3; Beta Club 3,4, President 4; Latin Club 1,2; Student Council Treasurer 4; Delegate to Boys' State 3; Monogram Club 2,3,4, Treasurer 3; Interclub-Council 3; Senior Superlative; Fashion Editor of THE ELK ANTLER 4; Circulation Manager of THE ELK 4; Baseball 1,2,3,4; Football 1,2; Basketball 2,3,4; Honorable Mention All Northwest 3; B. S. A. 1,2; Intramurals 1,2,3.

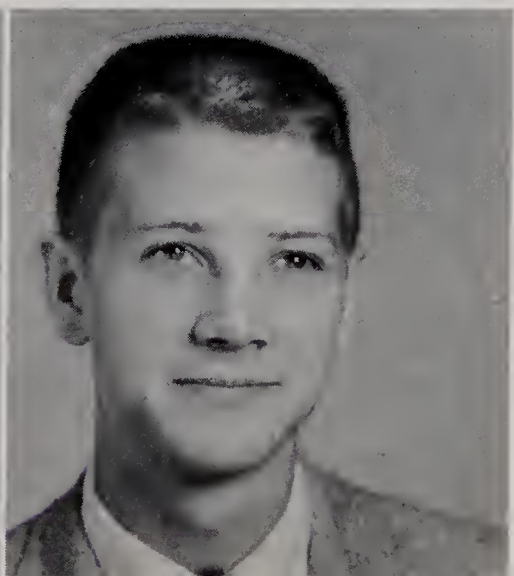
KATHERENE JEANE HAYES

Tall . . . "Kat" . . . dependable . . . good natured

Beta Club 3,4; D. E. Club 4, Secretary 4; Glee Club 3, Pianist 3; Intramurals 1,2; Student Council 2.



SENIORS . . .



HARRY HANCOCK HENSEL, JR.

Studious . . . history lover . . . politician

Student Council 2,3,4, Parliamentarian 2, Vice President 3, President 4; Delegate to NCSCC 2,4; Delegate to WDNCSCC 3,4; Delegate to NCSC, Toledo, Ohio 3; Delegate to SASC, Tulsa, Oklahoma 4; Beta Club 3,4; Hi-Y 2,3,4; Delegate to Interstate Hi-Y Conference 2; Senior Superlative.

JAMES PHILLIP HINSHAW

Cheryl . . . serious and polite . . . admirable

D. O. Club 4, Vice President 4; Hi-Y 2,3,4, Sergeant-at-Arms 4; Glee Club 2,3; Intramurals 1,2,3; Basketball 1,2,3,4; Band 1.



GARY GRANT HOLBROOK
Carrot top . . . a touch of mischief . . . cute
 D. O. Club 3,4; 4-H Club 1,2,3; Intramurals 1,2.

LARRY BRENT JOHNSON
Loves basketball . . . courteous . . . lazy
 Monogram Club 2,3; Hi-Y 2,3; Basketball 1,2,3; Baseball 1,2,5;
 Leaders' Club 1,2,3; D. O. Club 4; Intramurals 1,2; Sports
 Editor of THE ELK ANTLER 3.

CHARLES GARLAND JOHNSON, JR.
Industrious . . . loves to read . . . deep thinker
 Football 1,2,3; Tennis 1,2; Golf 3,4; Hi-Y 2,3,4; Leaders' Club 1;
 Latin Club 1,2; Beta Club 3,4; Monogram Club 4; Intramurals
 1,2.

HENRY CLATE "BUD" LANNING
Witty . . . cat . . . gets around . . . fun-loving
 Hi-Y 2,3; D. O. Club 4; Intramurals 1,2,3; Basketball Manager
 1,2,3; Football Manager 1,2,3; Baseball Manager 1,2; Monogram
 Club 1,2,3; Track 1,2.



JULIA ANN LEARY
"Duly" . . . pesters Mrs. Calloway . . . a touch of mischief . . . "Magnolia"
 Beta Club 3,4; Tri-Hi-Y 2,3,4; Latin Club 1,2; Library Assistants' Club 3,4, President 4.

PHYLLIS ANN LOWE
Phyl . . . great little forward . . . "11" . . . loves to dance
 Monogram Club 1,2,3,4; Majorette 1,2,3,4, Chief 3,4; Basketball 1,2,3,4, Co-Captain 4; Tri-Hi-Y 1,2,3,4, Secretary 4; Beta Club 3,4; Latin Club 1,2,4; Senior Superlative; Intramurals 1,2,3; Student Council 1.

SENIORS . . .

LINDA ANN LYON
Bill . . . infectious laughter . . . sweet spirited
 Tri-Hi-Y 1,2,3; Beta Club 3,4; D. O. Club 3,4; Library Assistants' Club 3; Intramurals 1,2.

DONNA EDITH MAINES
Artistic . . . good natured . . . a favorite
 Art Editor of THE ELK ANTLER 4; Spanish Club 3,4, Reporter 4; 4-H Club 1,2,3; Cheerleader 1,2,3; Glee Club 2,3; Office Assistant 4; Library Assistants' Club 1,2; Student Council 1,3; F. S. A. 4; Intramurals 2; Monogram Club 3,4.



MARY MAGDALENE MARSH

Always with Linda . . . sings . . . California . . . talk

F. S. A. 2; F. H. A. 1,4; Intramurals 1,2,3; Glee Club 3; Tri-Hi-Y 4; 4-H Club 1; Library Assistants' Club 1,2,3; Science Club 2.

NORMA SUE MARTIN

Bobby . . . Oh! Those eyes . . . lighthearted

D. E. Club 4; Latin Club 2,3; Tri-Hi-Y 3; Intramurals 1,2.



SHIRLEY RENEGAR McBRIDE

Bewitching eyes . . . striking . . . likeable

4-H Club 1; Glee Club 2,3; D. E. Club 4.

LORENE HARRIET MIDKIFF

Pretty eyes . . . reserved . . . sweet and silent

Glee Club 3,4; F. H. A. 4.

LONNIE PRICE MILLER

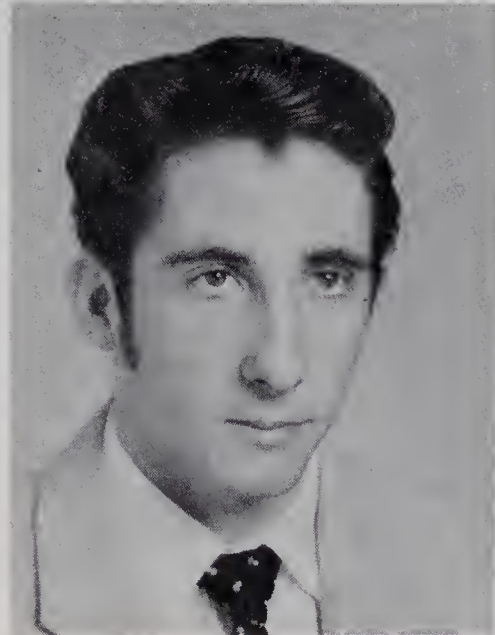
Already taken . . . "Elvis" haircut . . . true blue . . . "Hoss"

4-H Club 1,2,3; D. O. Club 3,4; Intramurals 1,2.

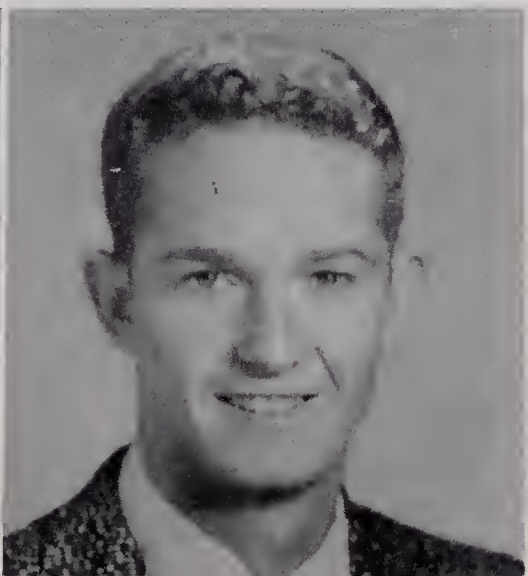
MARY SYLVIA MONEY

Majorette . . . short and likeable . . . "an apple a day"

Majorette 1,2,3,4; Monogram Club 3,4; Spanish Club 3,4; Tri-Hi-Y 3,4; F. S. A. 4; Office Assistant 4; Band 3; Intramurals 1,2,3.



SENIORS . . .



CAROLE ESTELLE MOODY

Chief cheerleader . . . rosy cheeks . . . personality plus

Tri-Hi-Y 1,2,3,4; Cheerleader 1,2,3,4, Chief 4; Monogram Club 3,4; Beta Club 3,4; Student Council 2; Spanish Club 3,4, Secretary 4; Office Assistant 4; Glee Club 3; Advertising Manager of THE ELK 3; Business Manager of THE ELK 4.

SAMMIE LEE NEWMAN

Big, big flirt . . . curly red hair . . . devilish disposition

Monogram Club 2,3,4; Intramurals 1,2,3,4; Glee Club 2; D. O. Club 4; Hi-Y 2,3,4, Sergeant-at-Arms 2; Football 1,2,3,4; Honorable Mention All Conference 3,4; Baseball 2,3,4; Basketball 4; Leaders' Club 1,2,3; Bus Driver 2,3; Track 3,4; Science Club 3.



ROBERT SPILMAN NOE, JR.

Bob . . . versatile athlete . . . handsome . . . nice guy
Band 1; WNC All-State Band 1; Student Council 1; Class Vice President 2; Beta Club 3,4; Latin Club 1,2; President 2; Monogram Club 2,3,4, Vice President 4; Hi-Y 2,3,4, Treasurer 4; Leaders' Club 2, Vice President 2; Spanish Club 4; Football 1,2,3,4; All-Conference 2,4; Basketball 2,3,4; Tennis 1,2,3,4; Senior Superlative.

DAVID RAY PARDUE

Best personality . . . a good friend . . . polite
Monogram Club 4; Intramurals 1,2,3; Glee Club 2,3; D. E. Club 4, President 4; Hi-Y 2,3,4; Baseball Manager 1,2,3; Basketball 3; Leaders' Club 1; Class Treasurer 4; Senior Superlative.

PAUL DAVID PARDUE

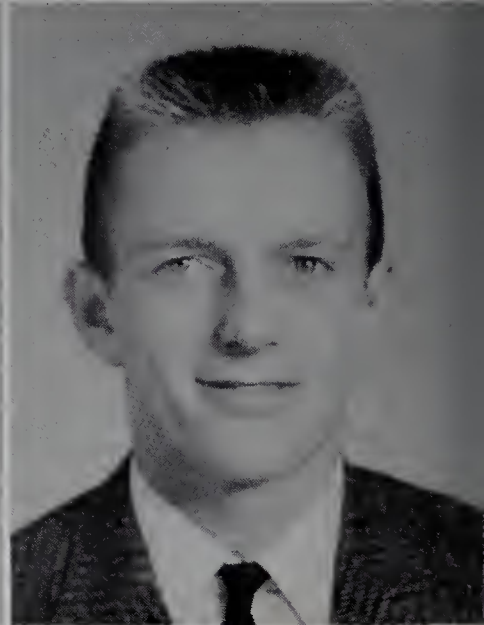
Friendly . . . rare . . . curly hair

D. O. Club 4; 4-H Club 3,4; Intramurals 3; Football 3,4; Bus Driver 3.

WILLIAM ROSCOE POPLIN, JR.

Bill . . . A&P fan . . . Wilbur . . . dependable

Latin Club 1,4; Spanish Club 4; Science Club 2, Treasurer 2, Hi-Y 2,3,4; Football 3,4; Golf 1,2,3,4; Monogram Club 3,4; Beta Club 3,4; B. S. A. 1,2,3,4, Senior Crew Leader 3.



LAWANNA JEAN PRUITT

Pretty blond hair . . . Mac's . . . Ray . . . letters, letters

Glee Club 2,3; Intramurals 1,2; Beta Club 3,4; F. S. A. 3,4, Secretary 4; D. E. Club 4, Treasurer 4.

GALE PAGE REEVES

"Hot-Rod" . . . Oh! That laugh! . . . fudge . . . jus' wunnerful

Beta Club 3,4, Chaplain 4; Beta Club Convention 3,4; Latin Club 1,2,3,4; Tri-Hi-Y 1,2,3,4, President 4; Interclub Council 4, Chaplain 4; Blue Ridge Assembly 3; Interstate Tri-Hi-Y Conference 4; Library Assistants' Club 4, Reporter 4; Editor-in-Chief of THE ELK ANTLER 4; THE ELK Staff, Intramurals 1,2; Senior Superlative.



JAMES DONALD REINHARDT

Plays trumpet . . . girls, girls, girls . . . National Guard

West Yadkin High School 1,2; Band 3,4; Glee Club 3,4.

ALBERT LEE ROSE

Works for Ed . . . neat dresser . . . nice to know

Band 1,2; Intramurals 1,2; Spanish Club 3,4; Science Club 3; Hi-Y 2,3,4.



SENIORS . . .

RICHARD MILES ROYALL

"Brain, Inc." . . . "mully right!" . . . neat dresser . . . outstanding

Student Council 2,4; Hi-Y 2,3,4, Secretary 3, President 4; Science Club 3,4, Vice President 3; Latin Club 1,2, Vice President 2; Beta Club 3,4, Treasurer 4; Monogram Club 2; Chief Marshal; Senior Superlative; Band 1,2; A.S. Northwest Band 2; Tennis 3,4; Golf 2; Beta Club Convention 3,4; Interclub Council 3,4; Art Editor of THE ELK 4; Class President 2,3; Blue Ridge Assembly 3.



BARBARA JEAN SETTLE

"Bobby" . . . Jewel Box . . . thoughtful . . .

Majorette 1,2,3; Monogram Club 2,4; Tri-Hi-Y 1,2; D. E. Club 4; Glee Club 3; Track 1,2; Intramurals 1,2,3.



REMONA JACKSON SIZEMORE

Griffins . . . reserved and capable . . . blue eyes

D. E. Club 4, Reporter 4; Science Club 2; F. H. A. 1,2,3,4, Treasurer 2,3; F. S. A. 2,3,4, President 3,4; Library Assistants' Club 3.

MARGARET JANE SNEED

Friendly . . . pretty hair . . . Belk's . . . considerate

Latin Club 1,2; Tri-Hi-Y 3; D. E. Club 4; Intramurals 1,2.

PHYLLIS CAROLE SOUTHARD

Cheerleader . . . laughs easily . . . cute personality

Monogram Club 4; Tri-Hi-Y 1,2,3,4; Cheerleader 2,3,4; Office Assistant 3,4; Senior Superlative; Glee Club 3; News Editor of THE ELK ANTLER 4; F. S. A. 4; Intramurals 1,2,3; Circulation Manager of THE ELK ANTLER 3.

PEGGY JO SPRINKLE

Sweet disposition . . . Starlight Grill . . . '50 Plymouth

Dobson High School 1,2; D. E. Club 3,4.



SENIORS . . .



JERRY MORGAN STEELE

Tall and timid . . . athlete . . . easy to get along with

Monogram Club 2,3,4, President 4; 4-H 1,2,3; Senior Superlative; Mr. Elkin High 3; Football 1,2,3,4, Tri-Captain 4; All Yadkin Valley 3,4; Honorable Mention All State 3,4; Basketball 1,2,3,4; All County 3,4; Honorable Mention All Northwest 3,4; All State 4; Baseball 1,2,3,4; Track 1,2,3,4; Intramurals 1,2,3.

NORMAN ULIN STEPHENS

"Belk Doughton & Stephens" . . . loves to sing . . . Harold's buddy

Band 1; Hi-Y 2,3,4, Secretary 4; Spanish Club 3,4, Vice President 4; Class Vice President 4; Glee Club 4; Intramurals 1,2,3; Interclub Council 4.



FRANKIE LEE STEWART

Basketball . . . most athletic . . . popular . . . sweet
Latin Club 1,2, Reporter 2; Library Assistants' Club 1; Monogram Club 3,4, Secretary 3,4; Tri-Hi-Y 1,2,3,4, Treasurer 4; Basketball 1,2,3,4, Co-Captain 4; Beta Club 3,4, Secretary 4; Marshal; Class Treasurer 3; Interclub Council 4; Intramurals 1,2,3; Senior Superlative.

SYLVIA CHERYL SWAIM

Phillip . . . blue-eyed doll . . . that sparkle on her finger

Intramurals 1,2; Cheerleader 1,2,3; Tri-Hi-Y 1,2,3,4; Glee Club 3; F. S. A. 2,3, Chaplain 3; Circulation Manager of THE ELK ANTLER 3; D. E. Club 4.

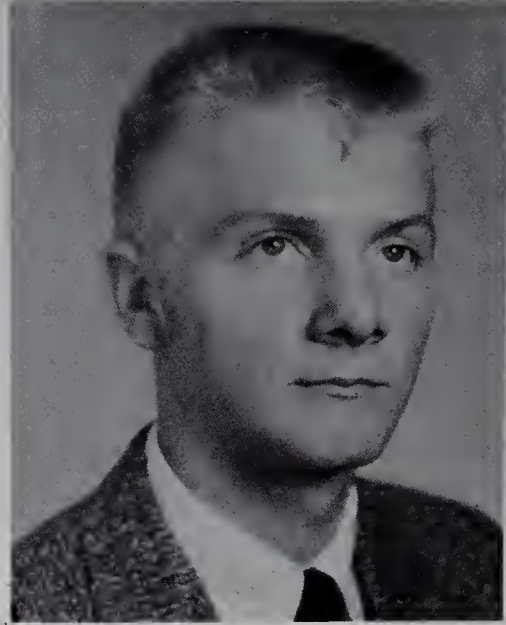
JERRY LEON SWIFT

Cotton top . . . Zephyr . . . full of witty remarks
4-H 1,2; Intramurals 1,2,3; D. O. Club 3,4.

JACK SANDERS TATUM

Hummmmmmm . . . Louie . . . always gettin' in trouble!

Latin Club 2; Hi-Y 2,3,4; Football 1; Football Manager 4.



JULIA ANN THOMPSON

Chemistry—Ugh! . . . loves sports . . . mischievous
Beta Club 3,4; Tri-Hi-Y 3; Glee Club 4; Science Club 4; Intramurals 1,2,3; Library Assistants' Club 3.

JO ANN TRANSOU

Jo . . . a willing worker . . . blushes, too . . . genuine

F. H. A. 3,4; Glee Club 3; Band 1,2; Intramurals 2.



SENIORS . . .

BRENDA ANN VESTAL

"Bav" . . . Wake Forest . . . music, music . . . boats
Tri-Hi-Y 1,2,3,4, President 2, Vice President 3; Co-Chaplain 4; Interclub Council 2,3,4, President 4; Latin Club 1,2, Chaplain 2; Student Council 3; Beta Club 3,4, Vice President 4; Glee Club 4; Cheerleader 1,2,3,4; Monogram Club 3,4; Senior Superlative; Intramurals 1,2; Marshal; Delegate to Girls' State 3.

NANCY LOU WALLS

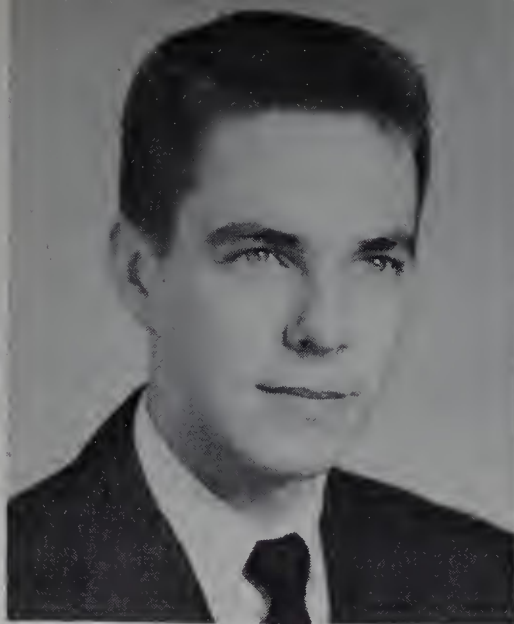
Spainhours . . . neat as a pin . . . true blue
Library Assistants' Club 1,2; Intramurals 1,2; Student Council 2; D. E. Club 3,4.



ROBERT HAROLD WALTERS

*Norman's buddy . . . sings like Elvis . . .
full of mischief*

Hi-Y 2,3,4, Vice President 4; Spanish Club 3,4, Treasurer 4;
Science Club 4; Basketball 3,4; Intramurals 1,2,3; Interclub
Council 4; Glee Club 4; Delegate to Blue Ridge Assembly 3.



RAMONA WATERS

"Mona" . . . giggle . . . talk . . . talk . . . giggle

Tri-Hi-Y 2,3,4; Monogram Club 3,4; Cheerleader 1,2,3; F. H. A.
1; Library Assistants' Club 1; Office Assistant 4; Track 1,2;
Intramurals 1; Spanish Club 3,4, Reporter 3, Chaplain 4;
Art Editor of THE ELK ANTLER 4; Fashion Editor of THE
ELK ANTLER 4.



BOB GENE WEATHERMAN

*Rather quiet . . . easy on the eyes . . .
quite a character*

Football 2; Glee Club 1; D. E. Club 4; Intramurals 1,2.

MARGIE LOUISE WEST

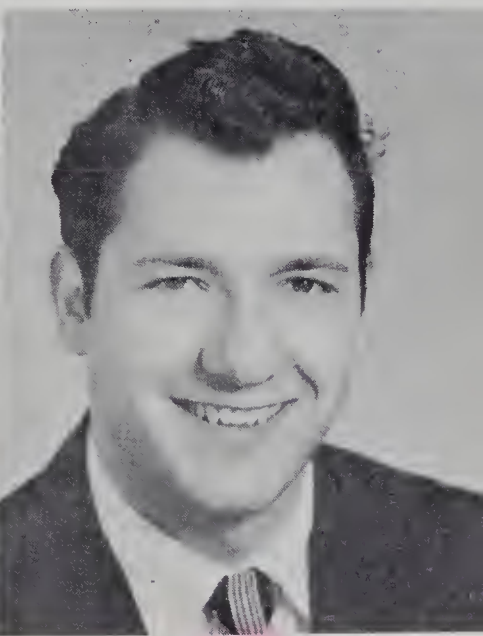
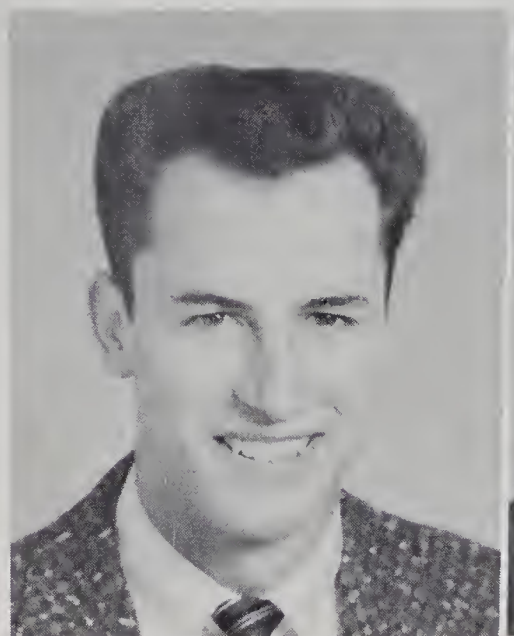
Ready wit . . . seldom serious . . . full of life

Glee Club 2,3; Intramurals 1,2; Track 1,2; F. S. A. 3,4; D. E.
Club 4; Senior Superlative.

WOODROW WILSON WILES, JR.

*"Woodie" . . . Mr. Touchdown . . . ALWAYS
tardy . . . so handsome*

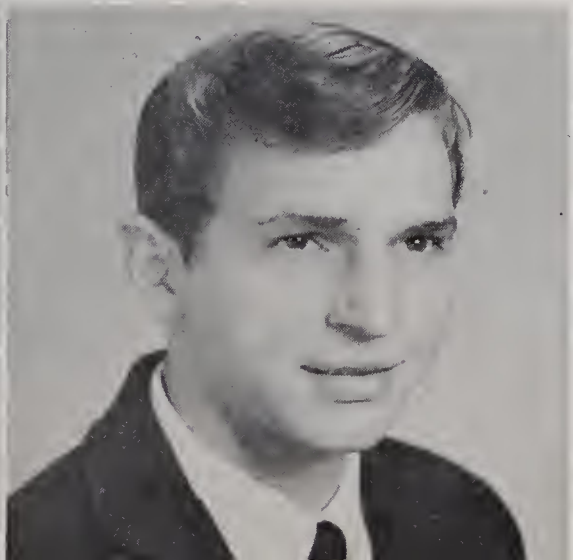
Hi-Y 4; Monogram Club 2,3,4; Leaders' Club 1; Football 1,2,3,4;
All Yadkin Valley 4; Honorable Mention All State 4; Basket-
ball 3,4; Baseball 1,2,3,4; Track 1,2,3,4; Intramurals 1,2,3; 4-H
Club 1; Senior Superlative.



HARVEY LEE WOOTEN, JR.

H. L. . . . nice smile . . . interesting . . . likeable
Football 1; Band 1; Track 2; Intramurals 1,2,3; D. E. Club 4.

SENIORS . . .



WINDLE LEE YARBORO

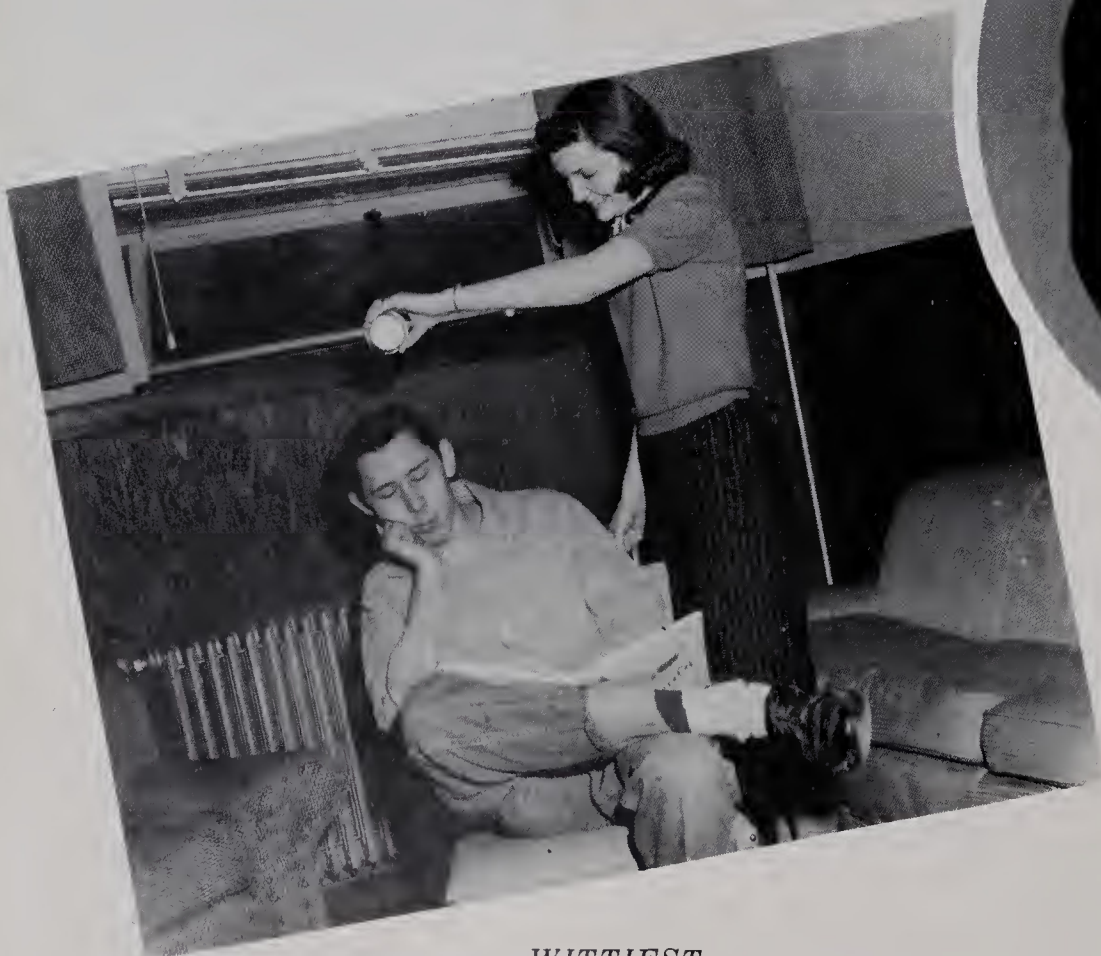
A favorite . . . admirable . . . sparkling smile

Football 1,4; Hi-Y 2,3; 4-H Club 1,2,3,4, Chaplain 2, President
3; Band 1,2; Leaders' Club 1; D. O. Club 4, President 4; Class
President 4; Intramurals 1,2,3; Track 1; Fashion Editor of
THE ELK ANTLER 3.

MOST ATTRACTIVE
PAT COCKERHAM and WOODIE WILES



MOST APT TO SUCCEED
BRENDA VESTAL and HARRY HENSEL



WITTIEST
LOUISE WEST and JACK TATUM



MOST POPULAR
GALE REEVES and BOB NOE

. . . SENIOR



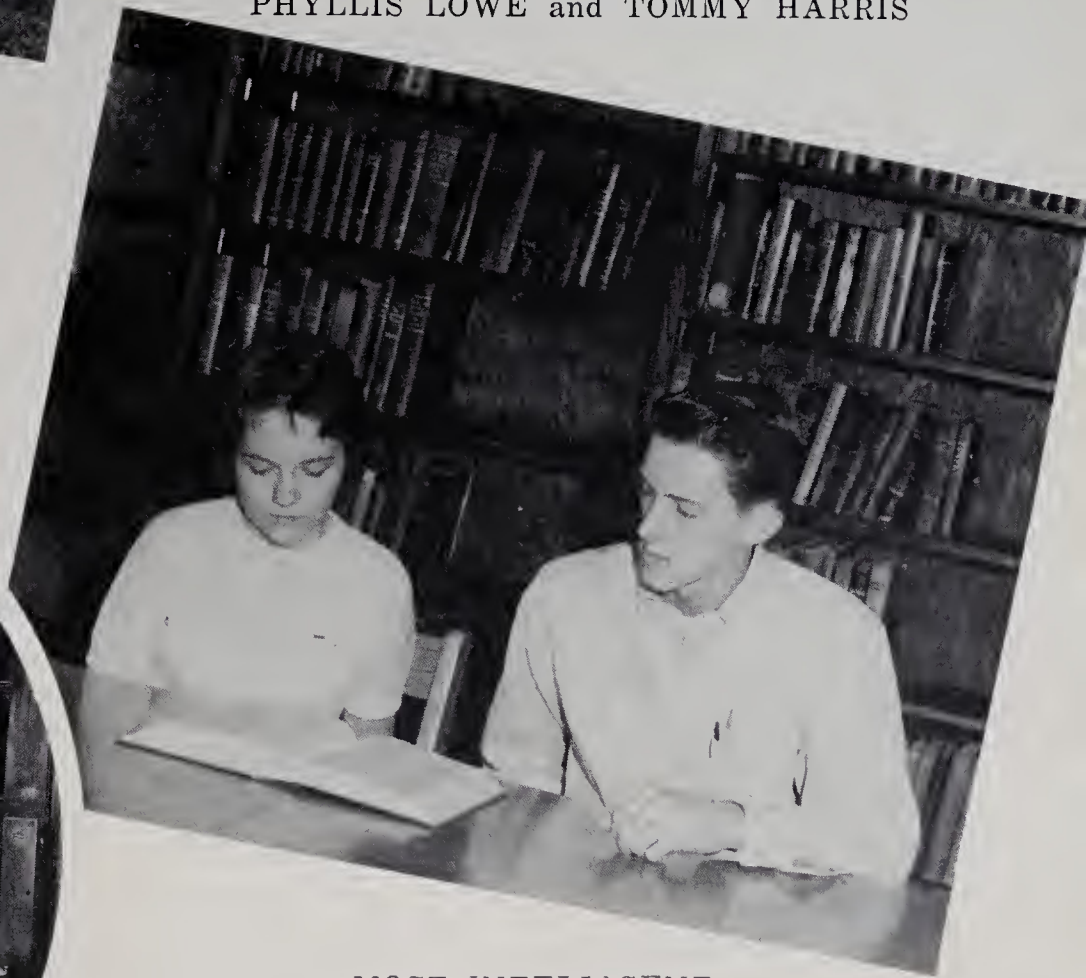
BEST PERSONALITY
CAROLE SOUTHARD and DAVID PARDUE



BEST SPORT
PHYLLIS LOWE and TOMMY HARRIS



MOST ATHLETIC
FRANKIE STEWART and JERRY STEELE



MOST INTELLIGENT
SYBRILLA CAUDLE and RICHARD ROYALL

SUPERLATIVES



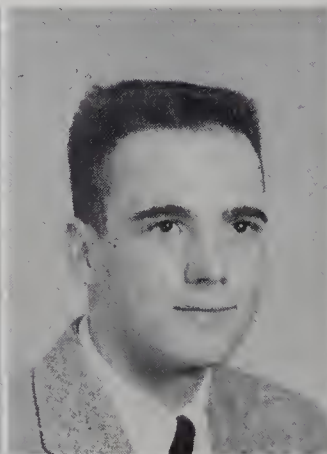
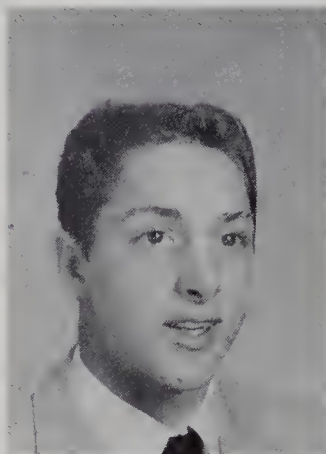
Juniors! The long hard journey is coming to an end; now we will be seniors. We have finished our year of work as juniors—we sold magazines; we presented the junior play; and we have built the Junior-Senior—and now we are ready to receive the responsibility and pleasure of being seniors.

What will the year ahead bring? We will have to wait and hope that all our plans and dreams will be fulfilled.

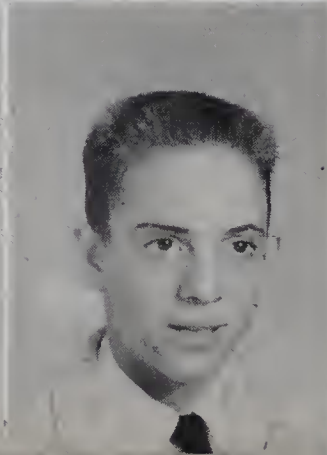
President.....Jim Shore
 Vice President.....Wally Holcomb
 Secretary.....Dellaphine Carter
 Treasurer.....Siyble Carlton

JUNIORS . . .

Bobby Adams
 Jimmy Allen
 Judy Beale
 Alfred Billings

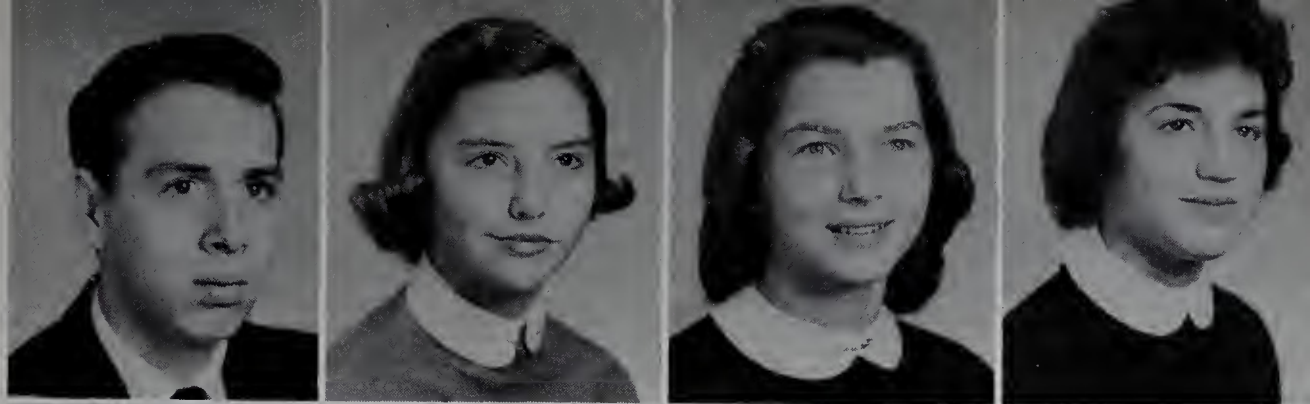


Judy Blackburn
 Max Blackburn
 Buddy Bruce
 Carol Burcham



JUNIORS

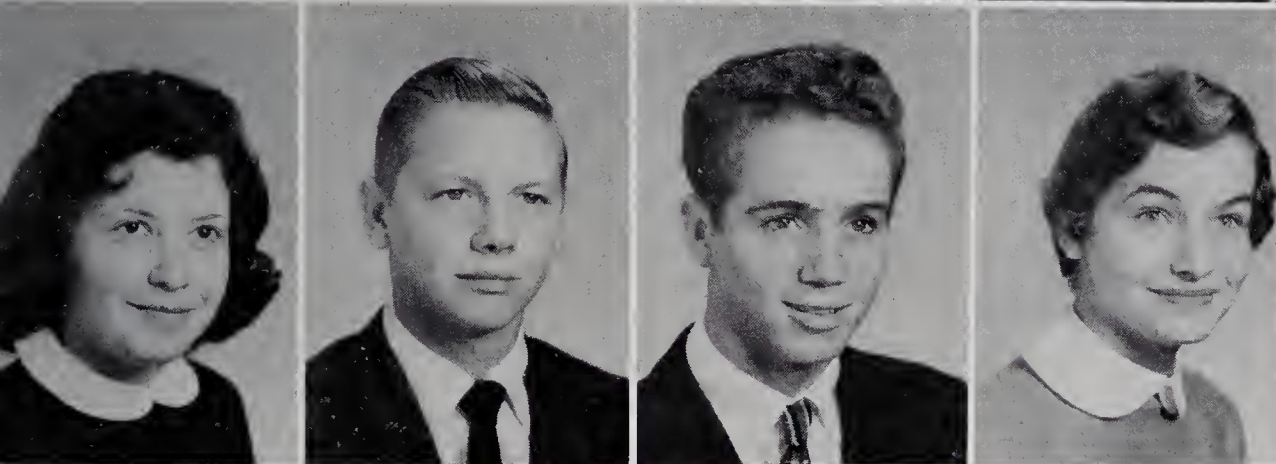
Bruce Burchette
 Siyble Carlton
 Dellaphine Carter
 Peggy Carter



Mary Ellen Caudle
 Betty Chipman
 David Cleary
 Rebecca Cockerham



Ronnie Cooke
 Janet Couch
 Lena Couch
 Billy Darnell



Earlene Darnell
 Jack Darnell
 Leonard Darnell
 Sheldon Darnell



Marian Davis
 Lorna Dixon
 Stephen Edwards
 Gale Eidson

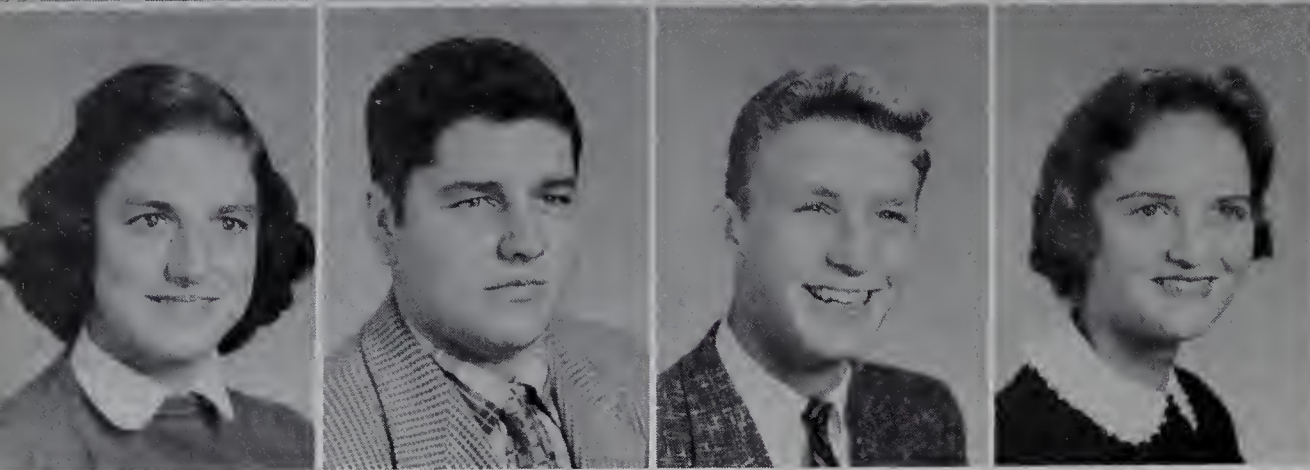


Ross Fox
 Nancy Franklin
 Margaret Gentry
 James Graham

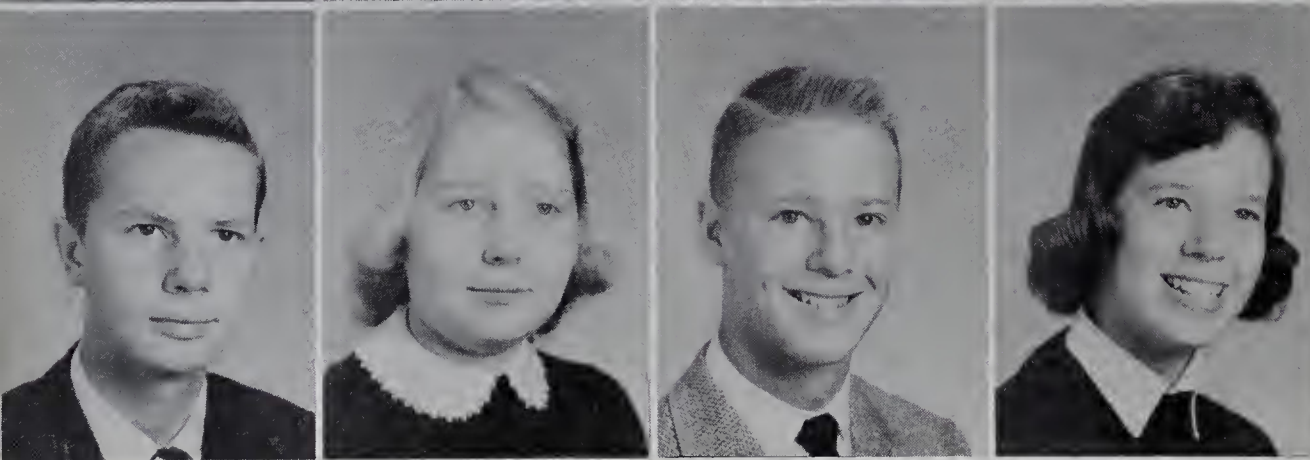
JUNIORS



Billy Hall
 Fred Harmon
 Jerry Harris
 Bob Hartness

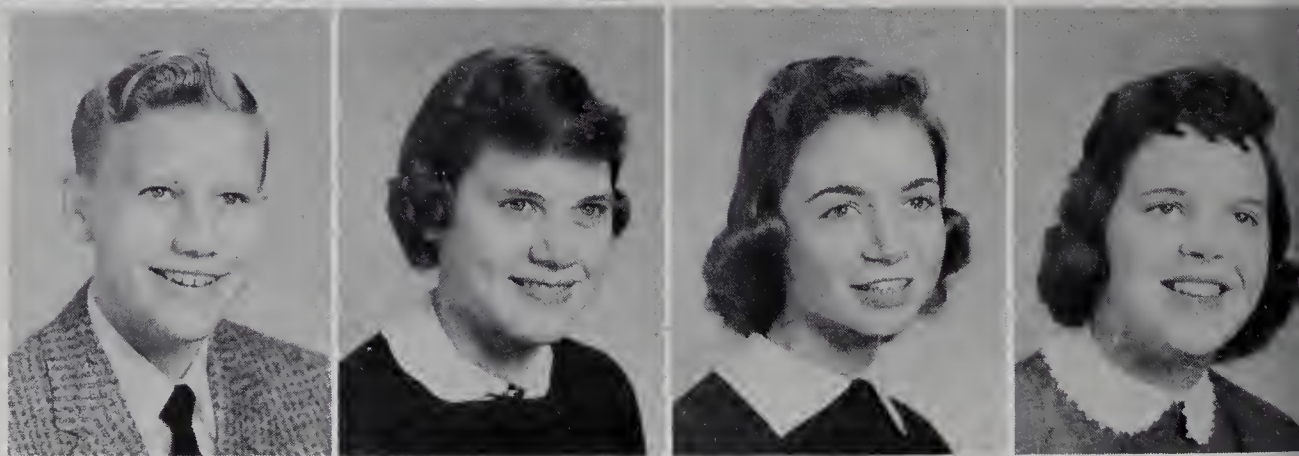


Carolyn Hinson
 Franklin Hinson
 Wally Holcomb
 Helen Hudspeth



Jimmy Lawrence
 Joye Lawrence
 Lawrence Laxton
 Pat Lewis

Vernon Luffman
 Ruby Jean Mastin
 Vicki Mayberry
 Jo Ann Mounce



Tony Newman
 Larry Nixon
 Mary Jane Prevette
 Anita Reichard

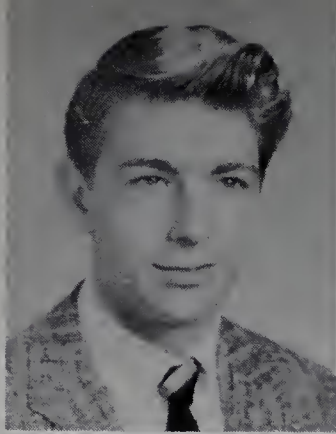


Claude Royall
 Jo Ann Saylor
 Laura Sears
 Jim Shore

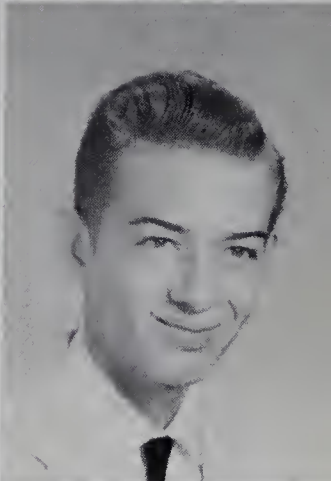
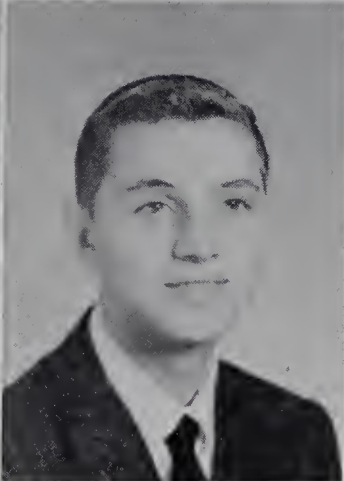
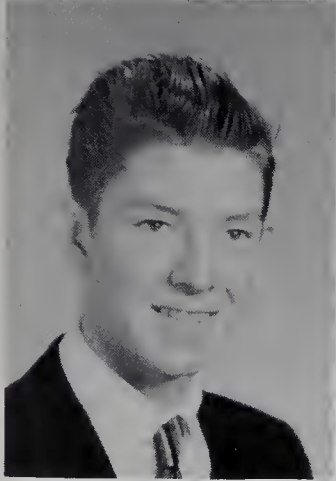


JUNIORS

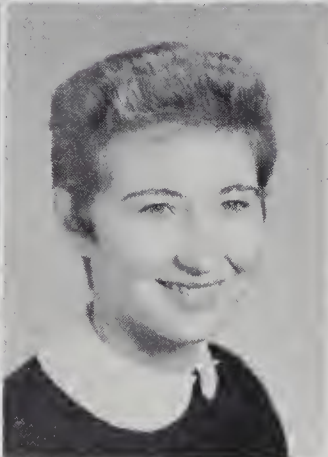
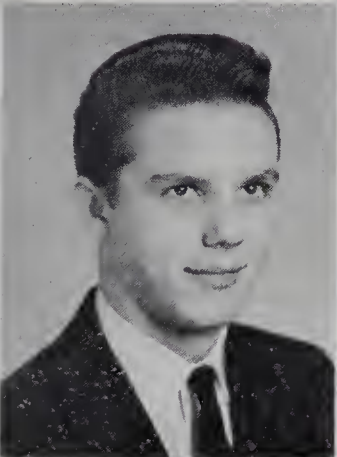
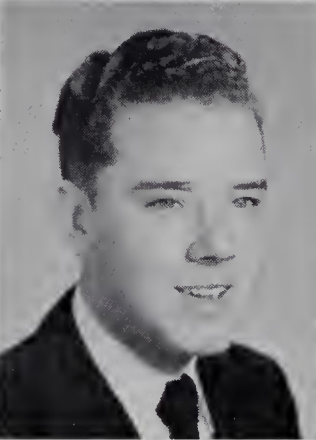
Sam Shore
 Judy Silverman
 Dennis Smoot
 Guy Snow



June Sofley
 Faye Southard
 Bud Stuart
 Tony Swaim



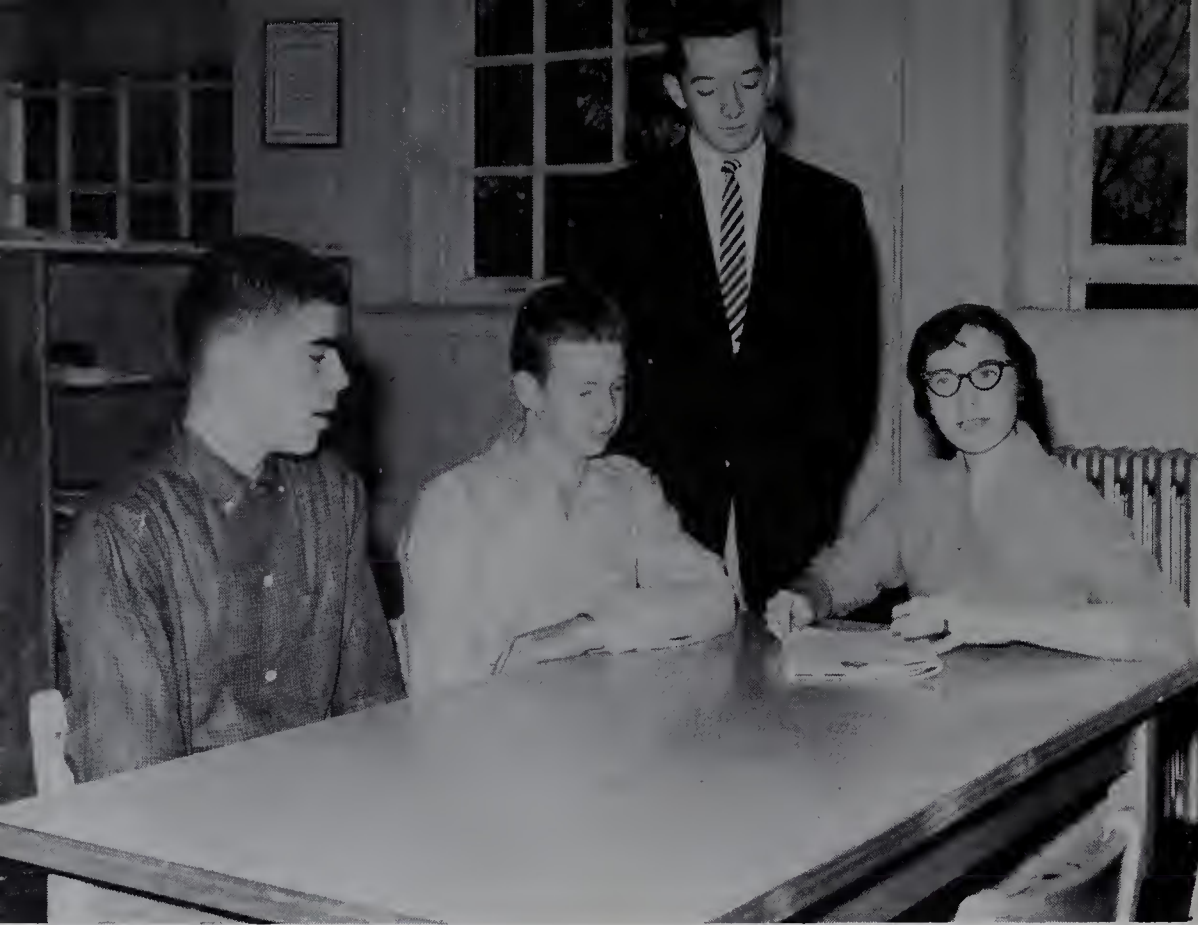
Robert Tatum
 Larry Tilly
 Mary Ruth Transou
 Betty Turner



Mildred Wagoner
 Jimmy West
 Gail White
 Jettie Williams

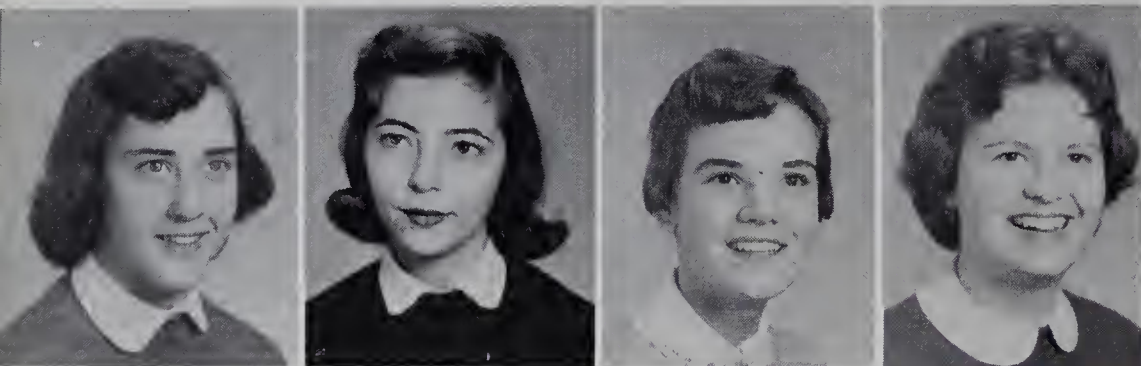


Juanita Woodie
 Jane Wooten



SOPHOMORE CLASS OFFICERS

President-----Norman Graham
 Vice President-----Benny Hampton
 Secretary-----Mary Ann Johnson
 Treasurer-----Wesley Smitherman



Belvin Adams
 Nancy Adams
 Pat Allen
 Mary Etta Armfield

. . . S O P H O M O R E S



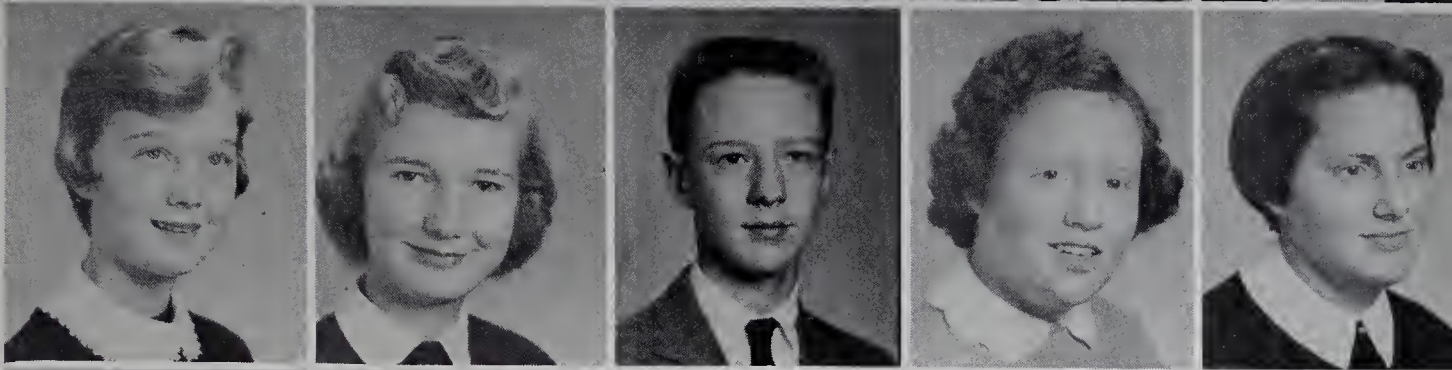
Glenda Badgett, Mary Lee Benge, Virginia Beulin, Kenneth Blackburn, Wanda Blevins, Ted Brinegar, Paulette Byrd.

Wallace Byrd, Savanna Carrico, Benny Caudle, David Caudle, Dorothy Chipman, Ellen Cooke, Donald Couch.

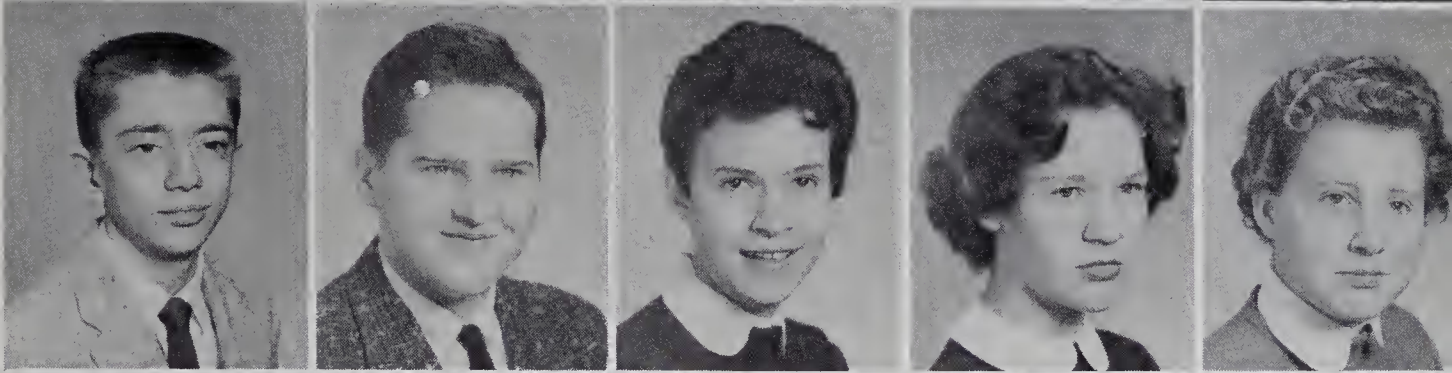
Tommy Couch
 Alice Cranford
 Harriet Curtis
 Carl Darnell
 Larry Darnell



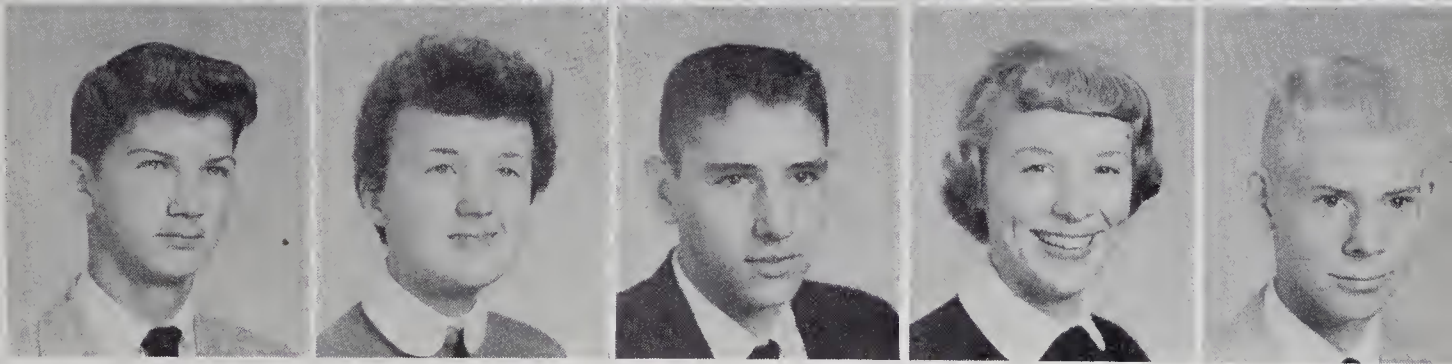
Mildred Darnell
 Joyce Day
 Tom Dillon
 Virginia Dula
 Linda Eidson



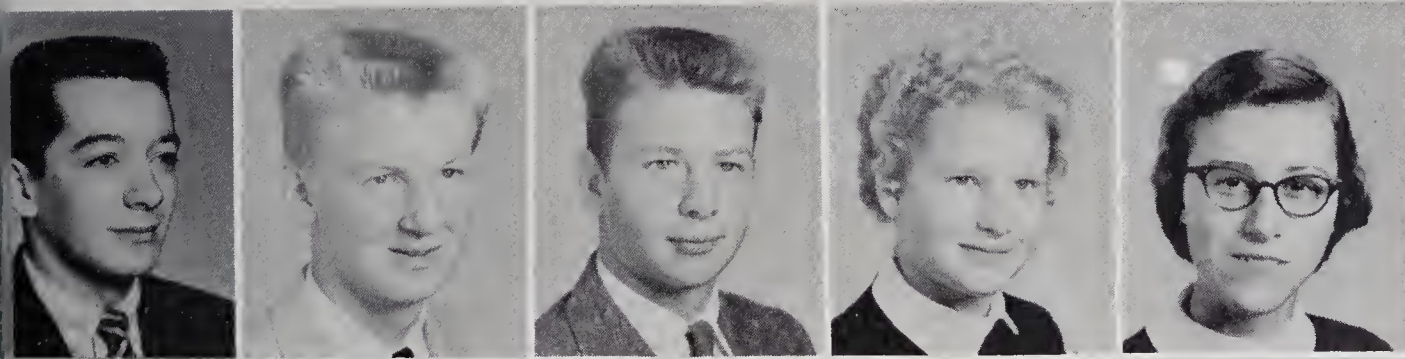
Butch Eller
 Dickie Evans
 Margaret Felts
 Kaye Francis
 Elizabeth Freshour



Jerry Gaither
 Marie Gambill
 Frank Gentry
 Mae Gentry
 Gwyn Gilliam



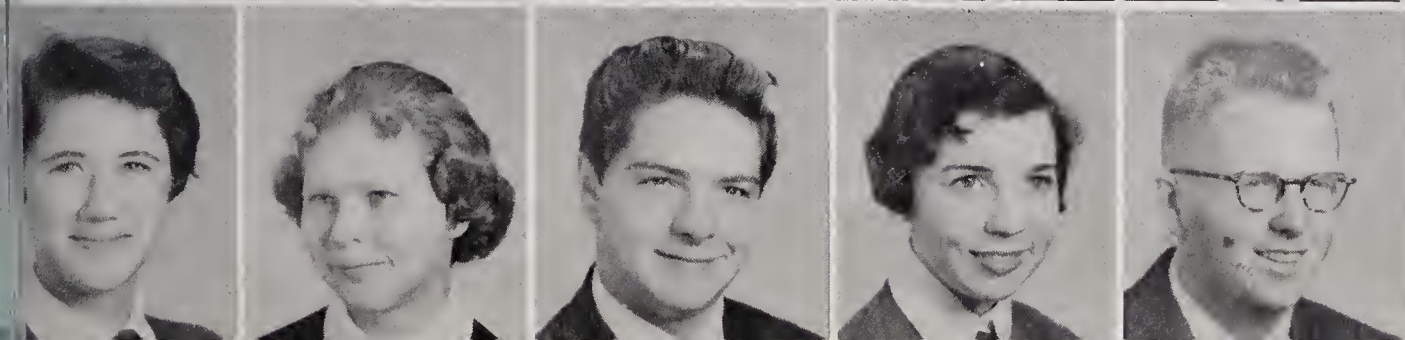
. . . S O P H O M O R E S



Norman Graham
 Charles Gregory
 Benny Hampton
 Anne Harpe
 Agatha Harris



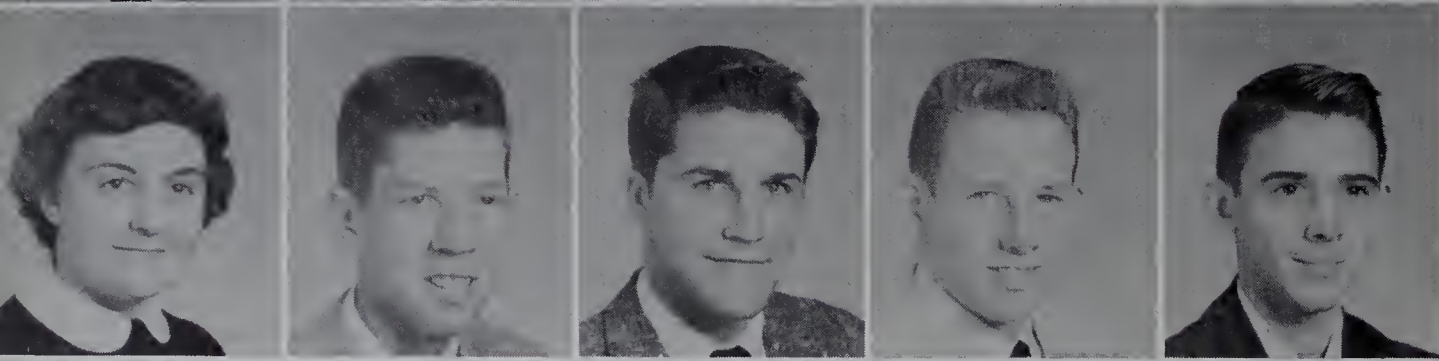
Ann Harris
 George Hart
 Patsy Hemric
 Sonny Hemric
 Randall Hilliard



Phyllis Irion
 Wilda Jackson
 Lanny Johnson
 Mary Ann Johnson
 Bobby Lankford



Michael Lawrence
Allen Laxton
Kay Long
Johnsie Martin
Betty Francis Meed



Mary Lou Meed
Gayle Money
Will Newman
Tommy Osborne
Garland Pardue



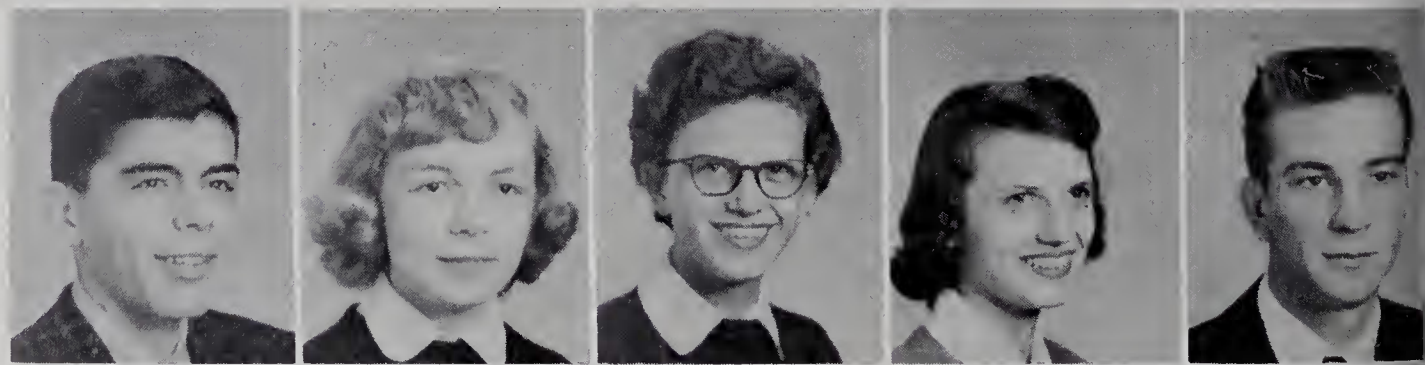
Margaret Parrott
Blanche Poplin
Jane Redmon
Sara Redmon
Charles Rhyne



Sterling Sagar
Wanda Settle
Jackie Simmons
Rachel Sloop
Sammy Sloop

S O P H O M O R E S . . .

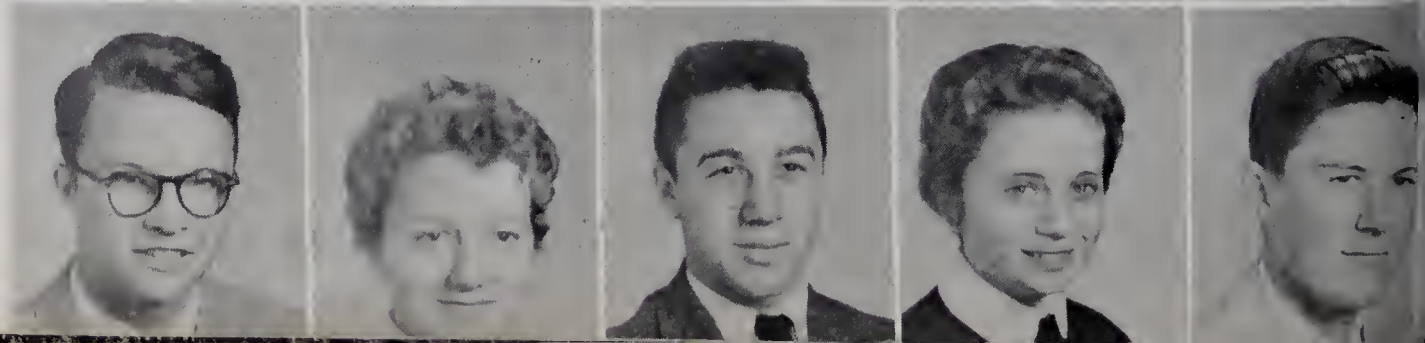
Wesley Smitherman
Lana Smoot
Alma Sneed
Susie Sneed
Clarence Swaim



Curtis Teague
Bunny Jane Thompson
Linda Tinsley
Ronnie Transou
Jimmy Uldrick



Jack Wampler
Jerry Weatherman
Johnny Welborn
Carol Yarboro
Charles York





FRESHMAN CLASS OFFICERS

| | | |
|---------------|-------|----------------|
| Ronnie Hooper | ----- | President |
| Janet Burcham | ----- | Vice President |
| Tommy Davis | ----- | Secretary |
| Judy McCain | ----- | Treasurer |



Nancy Baker, Nancy Baldwin, Clyde Ball, David Balzer, Jackie Bates, Sandy Biggs, Johnny Blackburn, Steve Blackburn, Betty Ruth Brown, Janet Burcham, Garvey Burchette, Gertie Burchette, Toby Butner.

FRESHMEN . . .

Betty Ann Carter, Mary Jane Carter, Steve Caudill, Clara Bell Causey, Dot Chipman, Barbara Jean Cockerham, Cathy Cockerham, Linda Cockerham.

Sharon Cockerham, Mary Lib Collins, Nancy Collins, Brenda Cothren, Mary Ellen Crater, Sharron Crummer, Kenneth Darnell, Tommy Davis.





Kent Eidson, Billie Jean Elderton, Sally Evans, Helen Felts, Barry Fox, Jane Franklin, Becky Freeman, Jane Gambill.

Coney Gentry, James Gentry, Rebekah Gentry, Sudie Gentry, Trent Gillmore, Buddy Greenwood, Ronnie Griggs, Bud Hall.

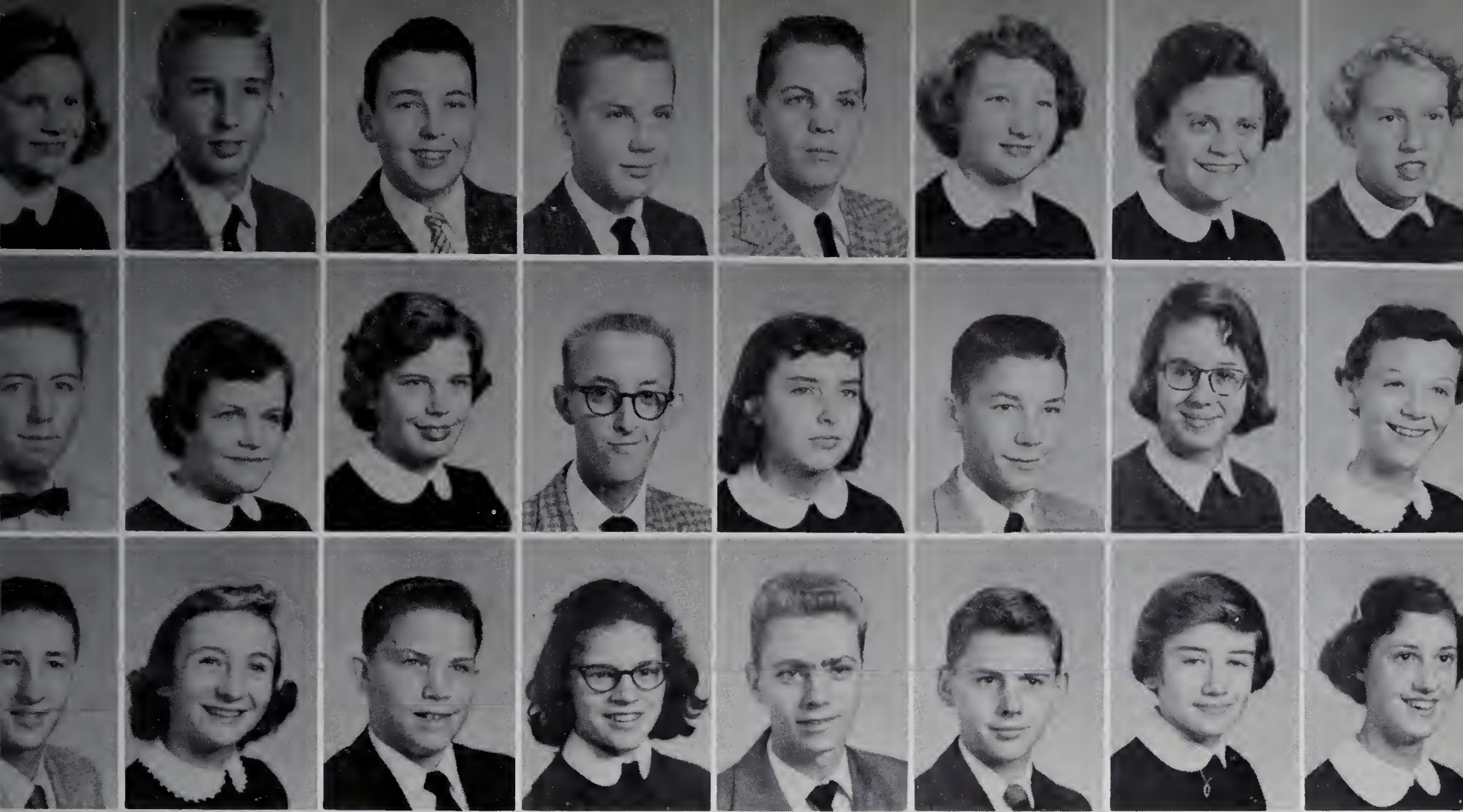
Frances Hanks, Ben Harding, Kate Harris, Ricky Harris, Pat Hayes, Caroiyn Hege, Jerry Hemric, Maxine Hemric.

FRESHMEN . . .

Rick Henderson, Keith Hilliard, Johnny Holbrook, Danny Holcomb, Eileen Holcomb, Ronnie Hooper, Lind Howland.

Evelyn Hudspeth, Peggy Johnson, Patsy Kennedy, Lorene Key, Claudia Layell, David Layell, Judy McCain.





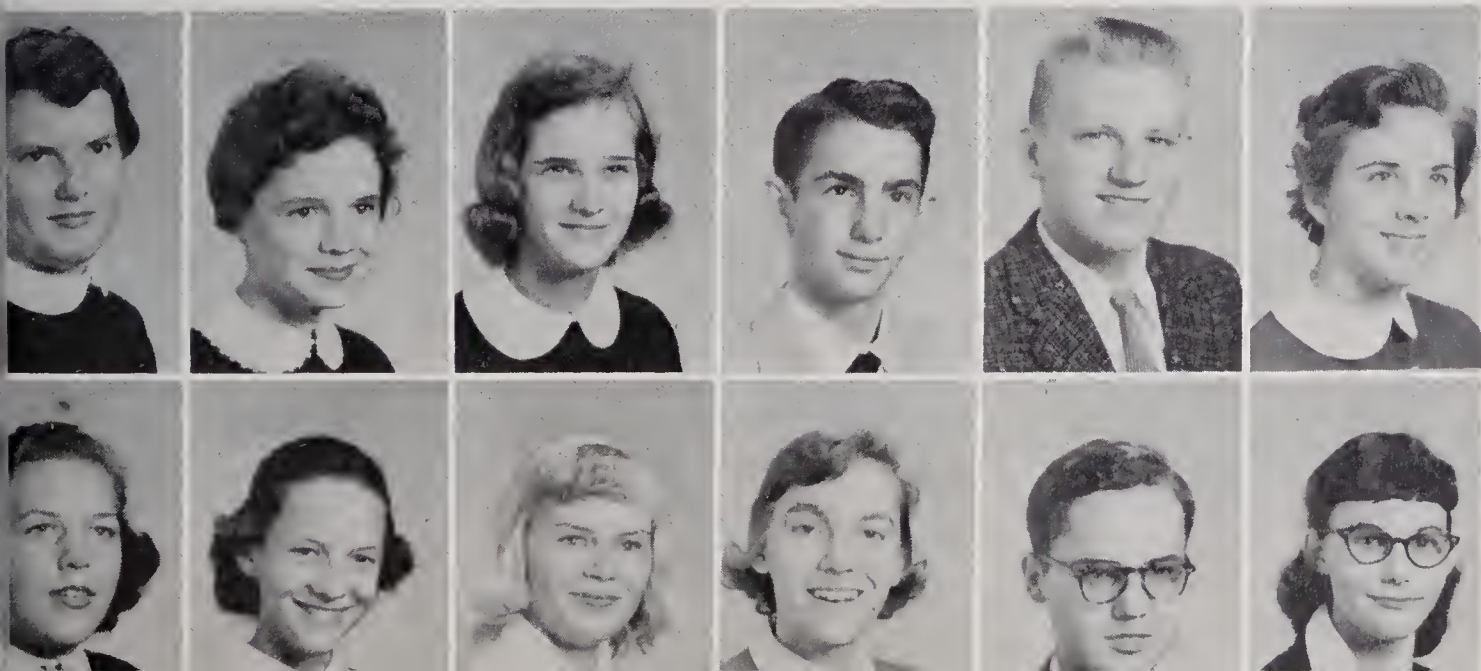
Peggy Macemore, Buck Martin, Kenneth Martin, Eddie Mastin, Larry Mastin, Geneva McCain, Jimmie Ann Miller, Louise Moncus.

Dallas Nance, Patsy Neaves, Yvonne Norman, Taylor Pardue, Brenda Park, Jerry Parks, Linda Parker, Martha Pearson.

Mike Phillips, Janet Poplin, Pat Porter, Bertha Pruitt, Vernon Reinhardt, Jay Royall, Marcella Sears, Jo Ann Sexton.

FRESHMEN . . .

Bonnie Shephard, Lynn Shepherd, Bonnie Shore, Charles Short, Richard Stevens, Sara Stockton.
Clara Stone, Pam Thomas, Audrey Thompson, Janet Vestal, Billy Waring, Linda Wiles.

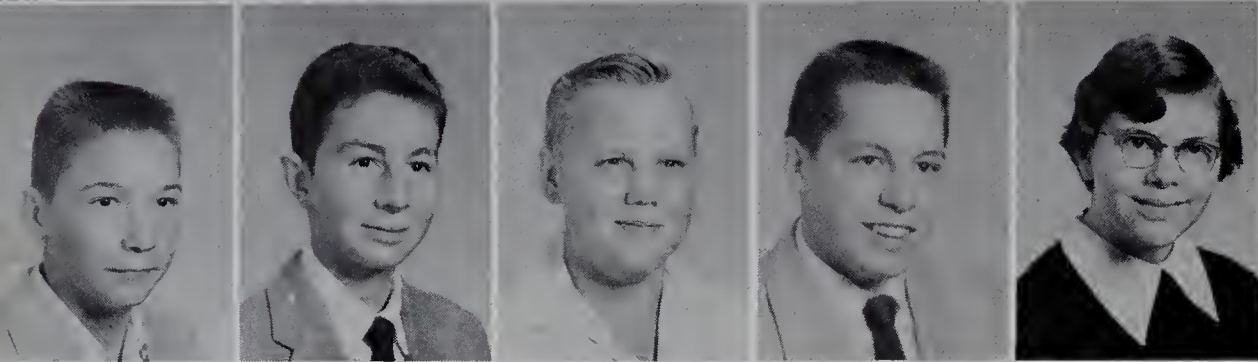


EIGHTH GRADE

EIGHTH GRADE CLASS OFFICERS

Steve Holloway.....President
 Sammy McCain.....Vice President
 Walter Metz.....Secretary
 Harry Jennings.....Treasurer

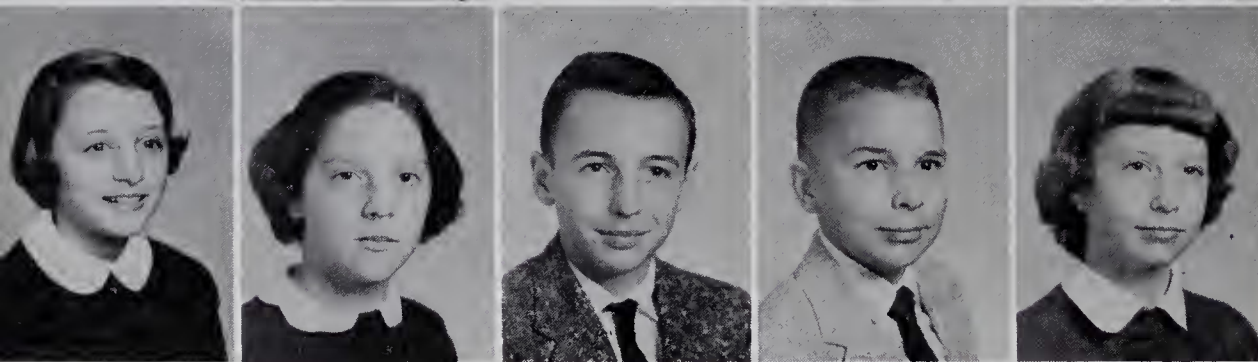
Alta Barker
 Molly Barker



David Billings
 Joe Bivins
 Jack Blackburn
 Jerry Blackburn
 Barbara Blevins



Hazel Bowers
 Ruth Bowers
 Shirley Brian
 Rita Brinegar
 Maurice Bumgarner



Alice Calhoun
 Linda Carlton
 Michael Carroll
 George Carson
 Ann Carter

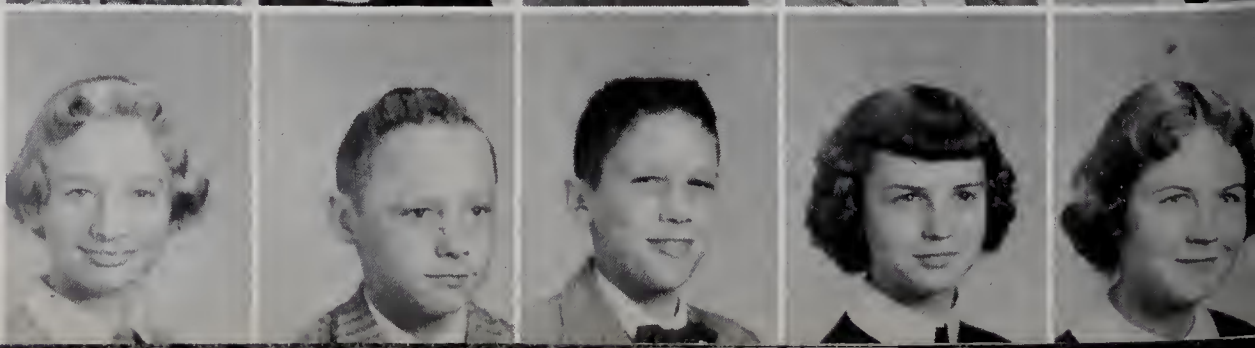
Bobby Carter
 Hilda Gay Carter
 Nora Lou Cave
 Buddy Chappell
 Howard Childress



Tommy Chipman
 Betty Collins
 Jane Cranford
 Sammy Crummer
 Frankie Curtis



Patsy Darnell
 Robert Dillon
 Johnny Dockery
 Alma Eldridge
 Betsy Eldridge

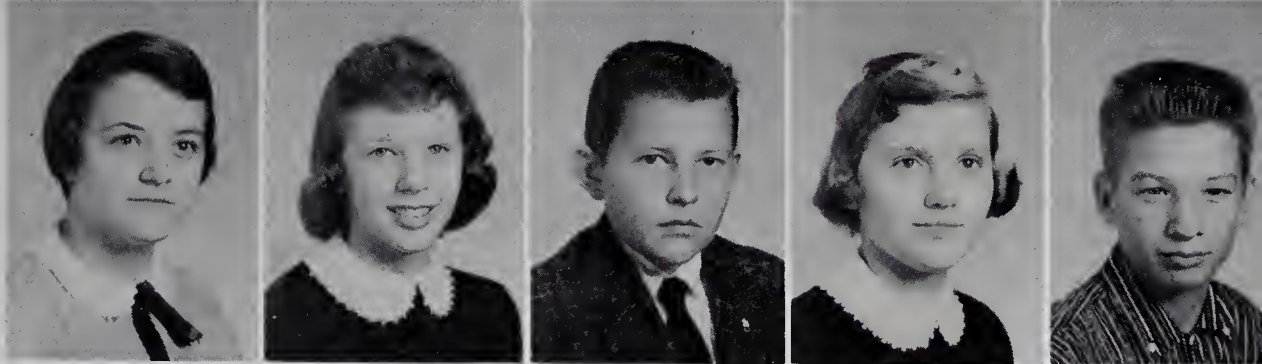


EIGHTH GRADE

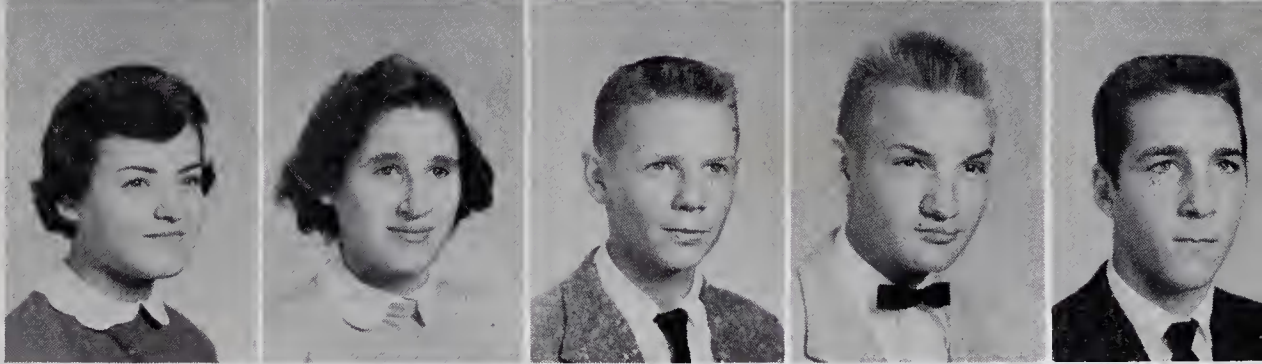
Johnny Ford
Jo Ann Foster
Stephen Freeman
Patsy Gilliam
Jo Ann Greenwood



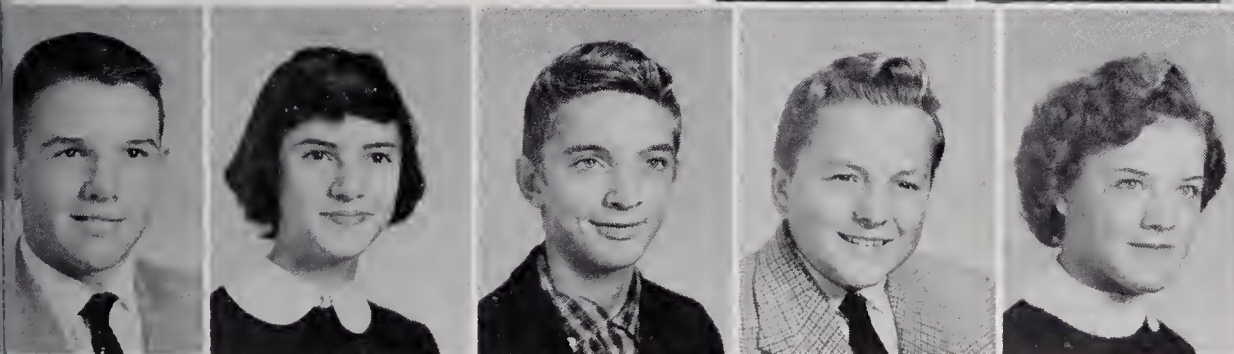
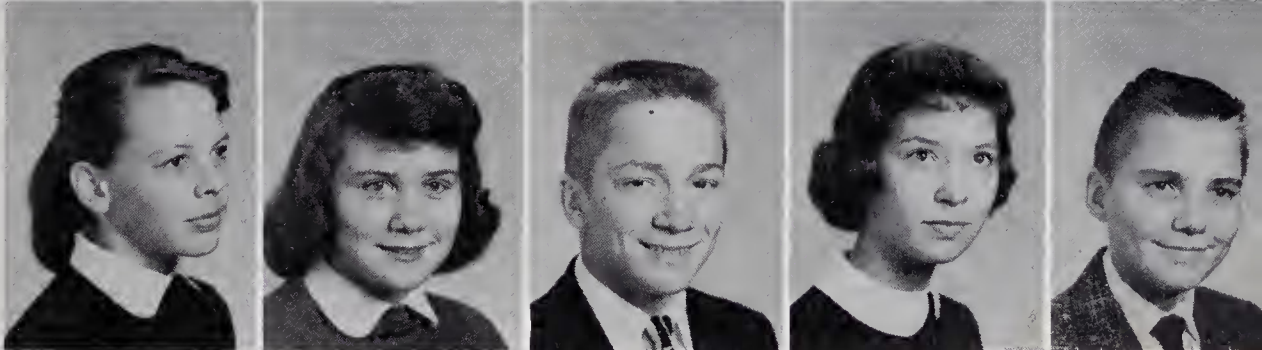
Margaret Gregory
Carolyn Hampton
Larry Hanks
Judy Harris
David Harris



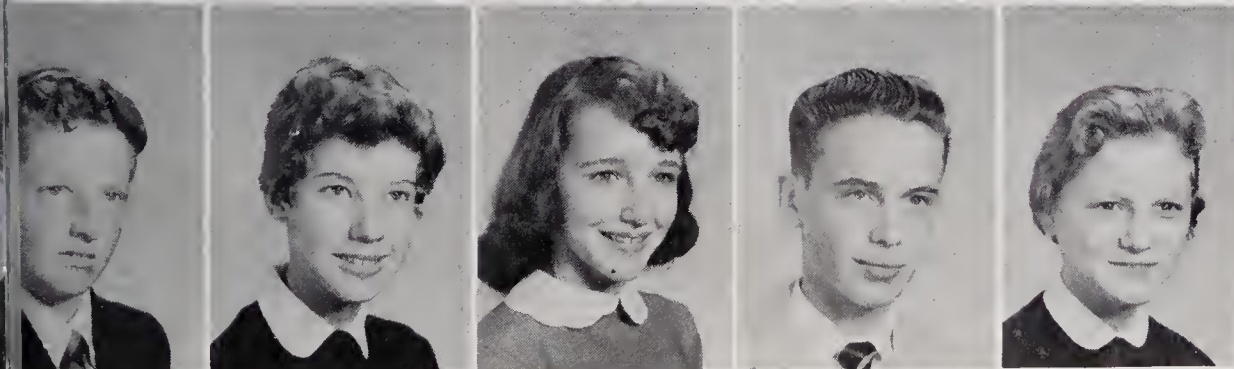
Annette Hayes
Gay Hemric
Ray Hinson
Gerald Holloway
Steve Holloway



Anne Howland
Katie Lee Huff
Andy Jackson
Penny Jackson
Gary Jennings



Harry Jennings
Vivian Johnston
Dale Jordon
Barry Lankford
Nellie Lawrence



Alfred Lee Lucas
Linda Lucas
Millie Luffman
Ronnie Long
Patricia Lyons



Steven Martin
Sara Mathis
Sammy McCoin
Walter Metz
Jimmy Nail

EIGHTH GRADE



Avery Neaves
Clayton Pardue
Martha Pardue
Gabrille Park
Sue Ann Pennell



Billy Phillips
Edgar Royall
Ann Sagar
Gary Sally
Linda Scott



Ronald Scronce
Dexter Settle
Anita Shore
Betty Sloop
Emily Smoot



Katie Spann
Margaret Sparks
Betty Sprinkle
Larry Stewart
Pike Sullivan

Erwin Swaim
Susan Taylor
Genevieve Teague
Nancy Tilly
Constance Triplette



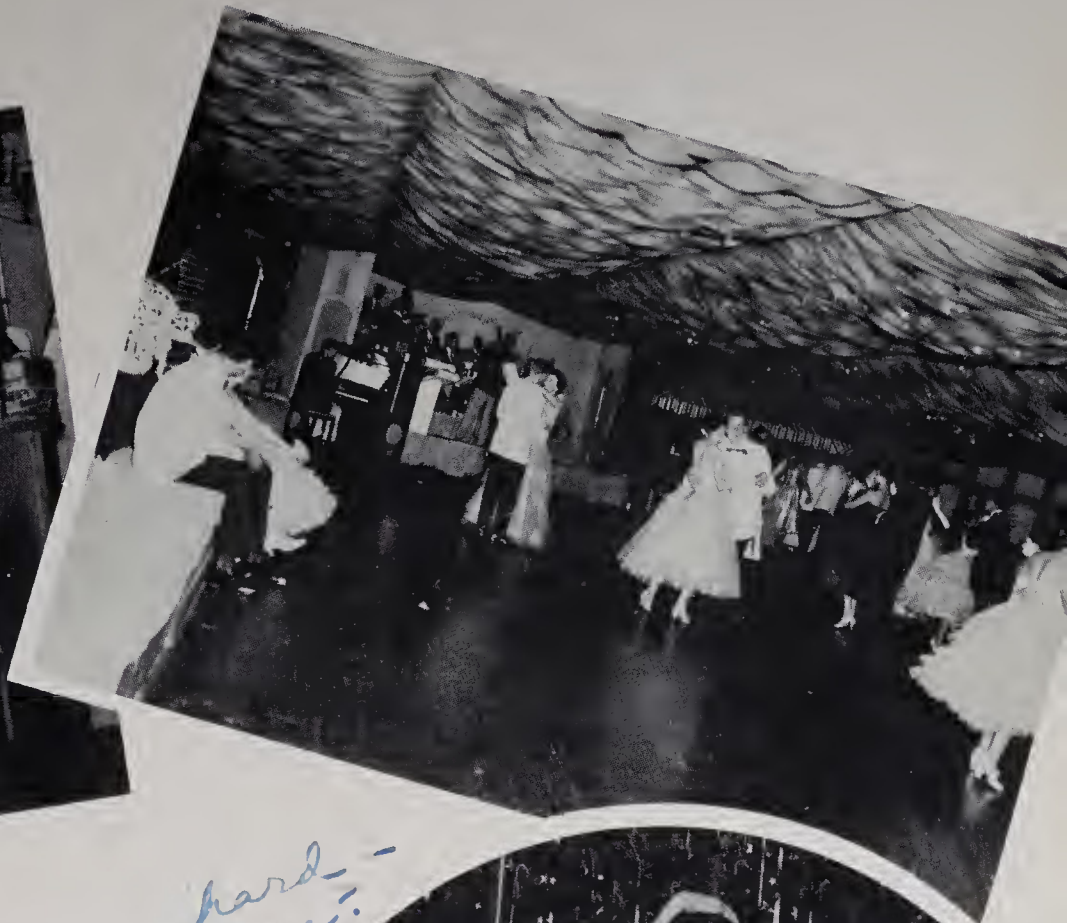
Ann Wampler
Carolyn Walters
Betty Jane Weaver
Willie Mae Welborn
Patsy White



O. W. White
Junior Wilmouth
Betty Windsor
Jerry Wood
Joe Wood



After School . . . the Spirit of Fun!

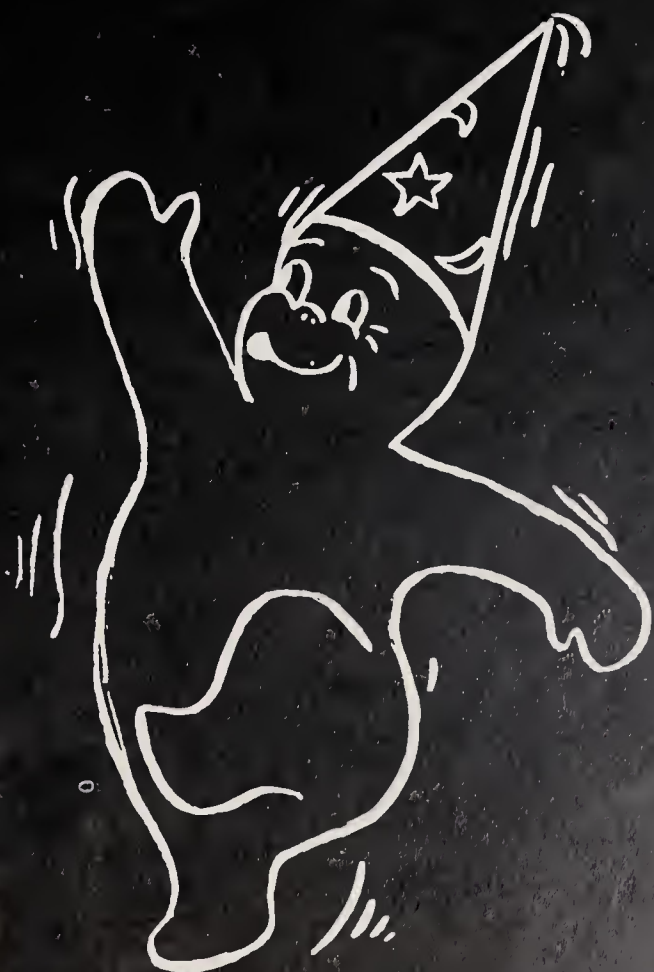


*Working hard -
aren't we!*





A
C
T
I
V
I
T
I
E
S





MONOGRAM CLUB

First Row: Brenda Vestal, Ramona Waters, Carole Moody, Barbara Settle, Donna Maines, Carol Burcham, Eva Barker, Helen Cranford, Phyllis Lowe, Frankie Stewart, Secretary; Jo Ann Saylor, Anita Reichard, Judy Silverman. *Second Row:* Sylvia Money, Phyllis Allen, Pat Cockerham, Judy Beale, Nancy Franklin. *Third Row:* Butch Eller, Jimmy Allen, Tommy Osborne, David Pardue, Wally Holcomb, Ross Fox, Mike Carpenter, Treasurer; Lawrence Laxton, Bob Noe, Vice President; Charles Johnson, Will Newman, Bill Hampton Davis, Chaplain; Bud Lanning. *Fourth Row:* Bruce Burchette, Sam Newman, Jim Finney, Fred Harmon, Gale Eidson, Guy Snow, Jerry Steele, President; Bill Henry Davis, Woodie Wiles, Tommy Harris, Brent Johnson, James Graham.

GLEE CLUB

First Row: Lorine Midkiff, Elizabeth Harpe, Donald Reinhardt, Bobby Adams, Julia Thompson. *Second Row:* Becky Cockerham, Ruby Jean Mastin, Brenda Vestal, Norman Stephens, Stephen Edwards, Leonard Darnell, Ellen Isaacs. *Third Row:* Ann Harpe, Paulette Byrd, Tony Newman, Pat Guyer, David Cleary, Max Blackburn, Betty Ruth Byrd, Director, David Gentry.





SPANISH CLUB

First Row: Betty Turner, Elizabeth Harpe, Sylvia Money, Phyllis Allen, Mary Ellen Caudle, Evelyn Gentry, Siyble Carlton. *Second Row:* Jim Finney, President; Norman Stevens, Vice President; Carole Moody, Secretary; Harold Walters, Treasurer; Ramona Waters, Chaplain; Gail White, Margaret Gentry. *Standing:* Albert Rose, Bob Noe, Jim West, Bruce Burchette, Guy Snow, June Sofly, Dennis Smoot, Vernon Luffman, Carol Burcham.

LATIN CLUB

First Row: Sharon Cockerham, Betty Frances Meed, Bunny Jane Thompson, Mary Ellen Crater, Betty Ruth Brown, Johnsie Martin. *Second Row:* Sara Redmon, Kate Harris, Jane Franklin, Jane Redmon, Phyllis Lowe, Helen Cranford. *Third Row:* Billy Jean Elderton, Judy McCoin, Marcella Sears, Gale Reeves, Ellen Cooke, Alice Cranford, Secretary. *Fourth Row:* Pat Allen, Treasurer; Mary Ann Johnson, Kay Long, Janet Burcham, Lind Howland, Sterling Sagar. *Fifth Row:* Sara Stockton, Mary Lou Meed, Blanche Poplin, Mary Etta Armfield, Margaret Parrot, Judy Silverman. *Standing:* Miss Emma Cooke, Advisor; Bobby Lankford, Tom Dillon, Dickie Evans, George Hart, Norman Graham, President; Wesley Smitherman, Vice President; Bill Poplin, Ronnie Hooper, Sandy Biggs, Pat Porter, Barry Fox, Kent Eidson.





D. E. CLUB

Seated: David Ray Pardue, President; Bobby Weatherman, Vice President; Jean Pruitt, Treasurer; Katherine Hayes, Secretary. *Second Row:* Nancy Walls, Louise West, Nancy Atkins, Remona Sizemore, Jane Sneed. *Third Row:* Barbara Settle, Cheryl Swaim, Mildred Wagoner, Carol Bengel, Norma Martin, Melba Caudle, Peggy Jo Sprinkle. *Fourth Row:* Buddy Bruce, Jack Darnell, H. L. Wooten, Don Byrd, Faye Southard, Mrs. Adrian Nixon, Advisor.

D. O. CLUB

First Row: Cecil Chipman, Edward Absher, Linda Lyon, Hattie Couch, Secretary; Bennie Darnell, Walter Brinegar, Treasurer; Mr. Claude Eldridge, Advisor. *Second Row:* Garvey Dameron, Phillip Hinshaw, Vice-President; Dwight Cass, Windell Yarboro, President; David Pardue. *Third Row:* Edward Collins, Jerry Swift, Lonnie Miller, Gary Holbrook. *Fourth Row:* Sam Newman, Frank Hinson, Bud Lanning, Mack Gentry. *Fifth Row:* Bill Davis, Brent Johnson.





STUDENT COUNCIL

First Row: Norman Graham, Parliamentarian; Jim Shore, Vice President; Harry Hensel, President; Sybrilla Caudle, Secretary; Tommy Harris, Treasurer. *Second Row:* Mary Etta Armfield, Kay Long, Evelyn Gentry, Judy Beale, Martha Pardue, Linda Parker, George Carson. *Third Row:* Guy Snow, O. W. White, Ronnie Hooper, Tommy Davis, Charles Rhyne, Bill Davis, Richard Royall, Gale Eidson, Mr. Morrow, Advisor.

HI-Y CLUB

First Row: Guy Snow, Co-Chaplain; Norman Stephens, Secretary; Harold Walters, Vice President; Richard Royall, President; Jimmy Shore, Co-Chaplain; Bob Noe, Treasurer. *Second Row:* Will Newman, Lanny Johnson, Michael Lawrence, Larry Nixon, Bob Hartness, George Hart, Tom Dillon, Lawrence Laxton, Bud Stuart, Claude Royall. *Third Row:* Larry Darnell, Jack Tatum, Albert Rose, Jerry Harris, Bobby Adams, Wally Holcomb, Tommy Osborne, Dickie Evans, Norman Graham, Jimmy Lawrence, Bill Poplin, Charles Gregory. *Fourth Row:* Pat Guyer, James Graham, Harry Hensel, Mike Carpenter, Jerry Steele, Tommy Harris, Gale Eidson, Jimmy Uldrick, Bill Davis, Charles Johnson, Wesley Smitherman, Jim Finney.





SR. TRI-HI-Y CLUB

First Row: Helen Cranford, Co-Chaplain; Phyllis Lowe, Secretary; Laura Sears, Vice-President; Gale Reeves, President; Frankie Stewart, Treasurer; Brenda Vestal, Co-Chaplain. *Second Row:* Phyllis Allen, Jane Wooten, Nancy Franklin, Sylvia Money, Pat Cockerham, Carole Moody, Elizabeth Harpe, Magdalene Marsh, Ima Lou Byrd, Linda Cooper. *Back Row:* Jo Ann Saylor, Judy Silverman, Mary Ellen Caudle, Carole Southard, Carol Burcham, Marian Davis, Pat Lewis, Eva Barker, Ramona Waters, Julia Ann Leary, Anita Reichard.

JR. TRI-HI-Y CLUB

First Row: Alice Cranford, Vice President; Pat Allen, Secretary; Ellen Cooke, Co-Chaplain; Mary Ann Johnson, President; Phyllis Irion, Treasurer; Mary Etta Armfield, Co-Chaplain; Patsy Kennedy, Reporter. *Second Row:* Kate Harris, Patsy Neaves, Billie Jean Elderton, Marcella Sears, Sharon Cockerham, Dot Chipman, Brenda Park, Sara Stockton, Marie Gambill, Betty Frances Meed. *Third Row:* Claudia Layell, Cathy Cockerham, Carolyn Hege, Margaret Parrott, Janet Burcham, Kaye Francis, Linda Eidson, Savanna Carrico, Blanche Poplin, Jane Franklin. *Back Row:* Lorene Key, Judy McCain, Martha Pearson, Linda Parker, Toby Butner, Lind Howland, Janet Poplin, Jimmy Ann Miller, Alma Sneed, Linda Tinsley.





BETA CLUB

Front Row: Richard Royall, Treasurer; Brenda Vestal, Vice President; Tommy Harris, President; Gale Reeves, Chaplain; Frankie Stewart, Secretary. *Second Row:* Billy Hall, Bud Stewart, Jean Pruitt, Carole Moody, Sybrilla Caudle, Evelyn Gentry, Judy Beale, Nancy Franklin, Mrs. Carl Calloway, Advisor. *Third Row:* Bob Noe, Lorna Dixon, Vicki Mayberry, Phyllis Allen, Linda Lyon, Janet Couch, Lena Couch, Siyble Carlton, Gale Eidson. *Fourth Row:* Marian Davis, Judy Silverman, Helen Cranford, Phyllis Lowe, Julia Leary, Julia Thompson, Katherine Hayes, Walter Brinegar. *Fifth Row:* Harry Hensel, June Sofley, Lawrence Laxton, Jimmy Lawrence, Jimmy Allen, Charles Johnson. *Sixth Row:* Bill Davis, Dennis Smoot, Bobby Hartness, Claude Royall, Mike Carpenter. *Seventh Row:* Guy Snow, Jimmy Shore, Jim Finney, Larry Nixon, James Graham.

MARSHALS

Left to right: Larry Nixon, James Graham, Jim Shore, Chief; Gale Eidson, Jimmy Allen, Bobby Hartness.





SCIENCE CLUB

Seated: Bud Stuart, Vice President; Bob Hartness, President. *Left to right:* Allen Laxton, Mr. Bert Joines, Donald Couch, Phil Couch, Jack Wampler, Harold Walters, Max Blackburn, Jimmy Uldrick, David Cleary, Richard Royall, Danny Holcomb, Albert Rose, Julia Ann Thompson, Jimmy Shore, Larry Nixon, Treasurer; Jane Wooten, Lanny Johnson, Vicki Mayberry, Secretary; Dennis Smoot, Jimmy Lawrence, Siyble Carlton, Ronnie Cooke, Pat Lewis, Jerry Harris, Billy Hall, Bob Adams.

4 - H CLUB

Front Row: Benny Hampton, President; Peggy Macemore, Vice President; Claudia Layell, Secretary; Carolyn Hege, Chaplain; Ronnie Long, Reporter. *Second Row:* Jo Ann Greenwood, Cathy Cockerham, Margaret Sparks, Pam Thomas, Geneva Teague. *Third Row:* Elizabeth Freshour, Louise Moncus, Bonnie Shepherd, Bonnie Shore. *Fourth Row:* Clara Stone, Betty Ann Carter, Agatha Harris, Katy Spann, Mary Lib Collins. *Back Row:* Kenneth Blackburn, Benny Caudle, Garvey Burchette.





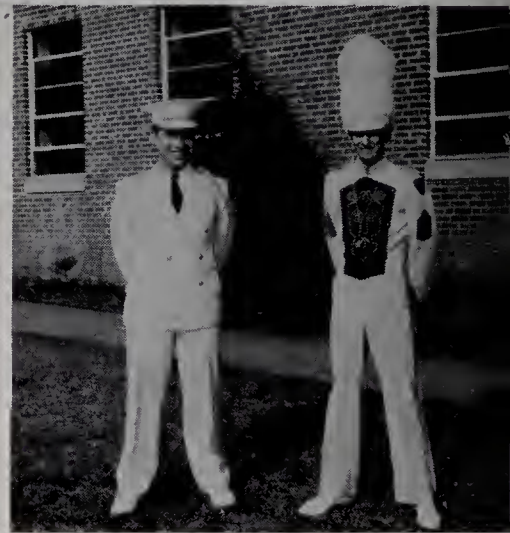
FUTURE HOMEMAKERS OF AMERICA

First Row: Linda Cooper, Nancy Franklin, Treasurer; Earline Darnell, Betty Ruth Byrd, Peggy Carter, Remona Sizemore, Melba Caudle, President; Ima Lou Byrd, Magdalene Marsh, Pat Cockerham, Chaplain; Sharon Cockerham, Becky Cockerham, Vice President. *Second Row:* Miss Mary Holland, Advisor; Patsy Hemric, Lorine Midkiff, Paulette Byrd, Eva Barker, Betty Ruth Brown, Mary Ellen Crater, Ann Harris, Carolyn Hinson, Jo Ann Transou, Jo Ann Mounce.

FUTURE SECRETARIES OF AMERICA

First Row: Carol Bengé, Louise West, Joye Lawrence, Wilda Jackson. *Second Row:* Evelyn Gentry, Ima Lou Byrd, Mildred Gentry, Kaye Francis. *Third Row:* Sylvia Money, Jo Ann Mounce, Helen Hudspeth, Donna Maines, Melba Caudle. *Standing:* Faye Southard, Mary Ruth Transou, Chaplain; Betty Ruth Byrd, Treasurer; Jean Pruitt, Secretary; Elizabeth Harpe, Vice President; Remona Sizemore, President; Mrs. John Barbour, Advisor.





BAND

First Row: Phyllis Lowe, Sylvia Money, Pat Allen, Dellaphine Carter, Linda Tinsley, Mary Ann Johnson, Phyllis Allen. *Second Row:* Mary Lynn Shepherd, Phil Couch, Ann Wampler, Jimmy Poplin, Nancy Collins, Ann Day, Kenneth Blackburn, Clara Belle Causey, Donald Reinhardt, Sandy Biggs, Billy Phillips, Mr. David Gentry, Hilda Gay Carter. *Third Row:* Virginia Ford, Maurice Bumgarner, Claudia Layell, Carolyn Hege, Curtis Teague, Dale Jordan, Garvey Burchette, Larry Hanks, Mark Green, David Brown, Jr. *Fourth Row:* Hack Frye, Penny Jackson, David Cleary, Kenneth Martin, Steve Freeman, Buddy Chappell, Ray McCain, Dale Wiles. *Fifth Row:* Tony Darnell, Douglas Browne, Cynthia Nelson, Phillip Martin, Johnny Kennedy, Mickie Yarboro, Charles Myers.



BUS DRIVERS

Front: Donald Reinhardt, Benny Darnell.
Back: Gayle Money, Benny Caudle, Donald Couch.




OFFICE ASSISTANTS

Standing: Sylvia Money, Helen Cranford, Ramona Waters, Donna Maines, Carole Moody, Pat Cockerham, Carole Southard, Mildred Gentry. *Seated:* Eva Barker.

LIBRARY ASSISTANTS

Standing: Mrs. Carl Calloway, Virginia Dula, Linda Eidson, Secretary and Treasurer; Margaret Felts. *Seated:* Julia Ann Leary, President; Peggy Carter, Betty Ruth Byrd, Gale Reeves, Reporter.





Helen Cranford, Editor-in-Chief, sighs, "Will we ever meet our deadline?"

THE ELK STAFF



Siyble, Helen, and Richard diligently plan lay-outs and identify pictures.

"Hope these figures check!" say Carole, Mike, and Evelyn.



Richard Royall, Art Editor, originates our little ghost.



The staff grins, "The annual is on its way!"

Phil gets a quick shot of Tommy as he sells Lanny an annual.

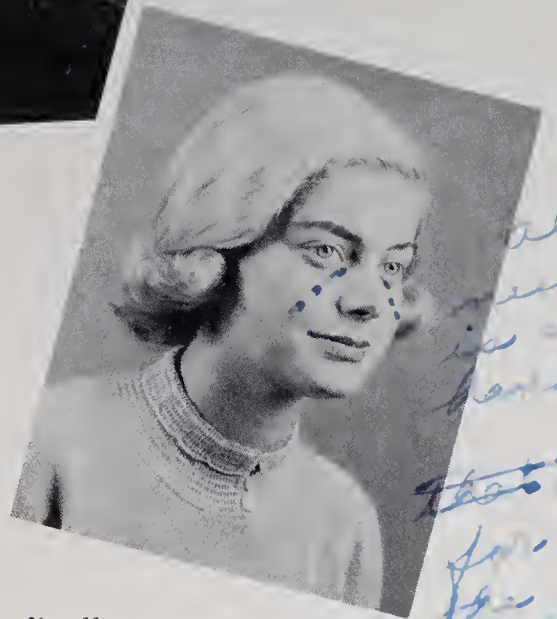


Siyble Carlton, Assistant Editor, types page after page of copy for THE ELK.

The Journalism Class
hard at work! (?)



ELK ANTLER STAFF



*all
need now
is a
barbie!
That's thank
for all
the help
in the
papers, mi*

Gale finally came
through—tears and all.

Drawing up heads and ads for the
ANTLER are Mildred Gentry, Donna
Maines, Ramona Waters, and Evelyn
Gentry while Mrs. Barbour looks on.



The Big Wheels: Juanita Woodie, Assistant
Editor; Gale Reeves, Editor-in-Chief; Sybrilla
Caudle, Feature Editor; Carole Southard, News
Editor.





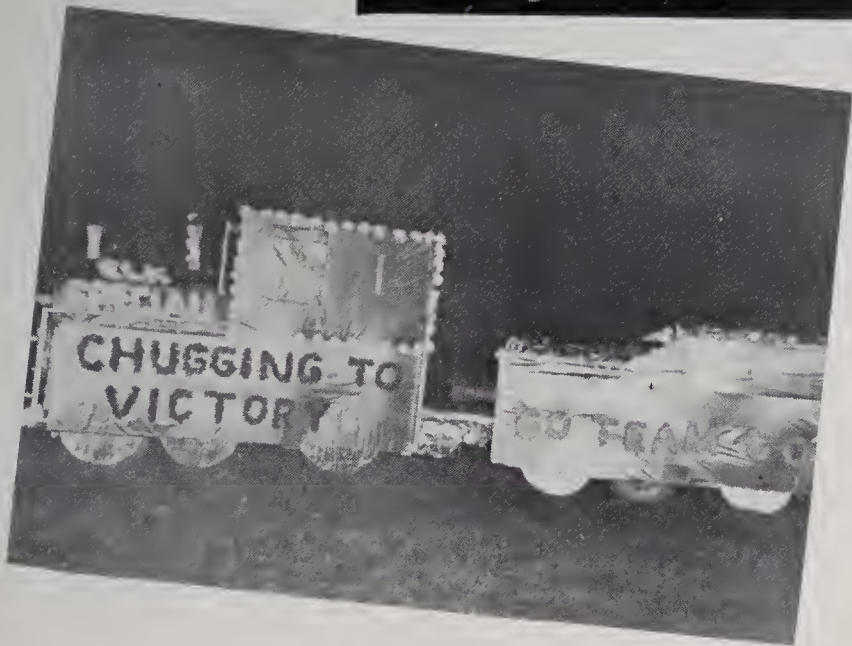
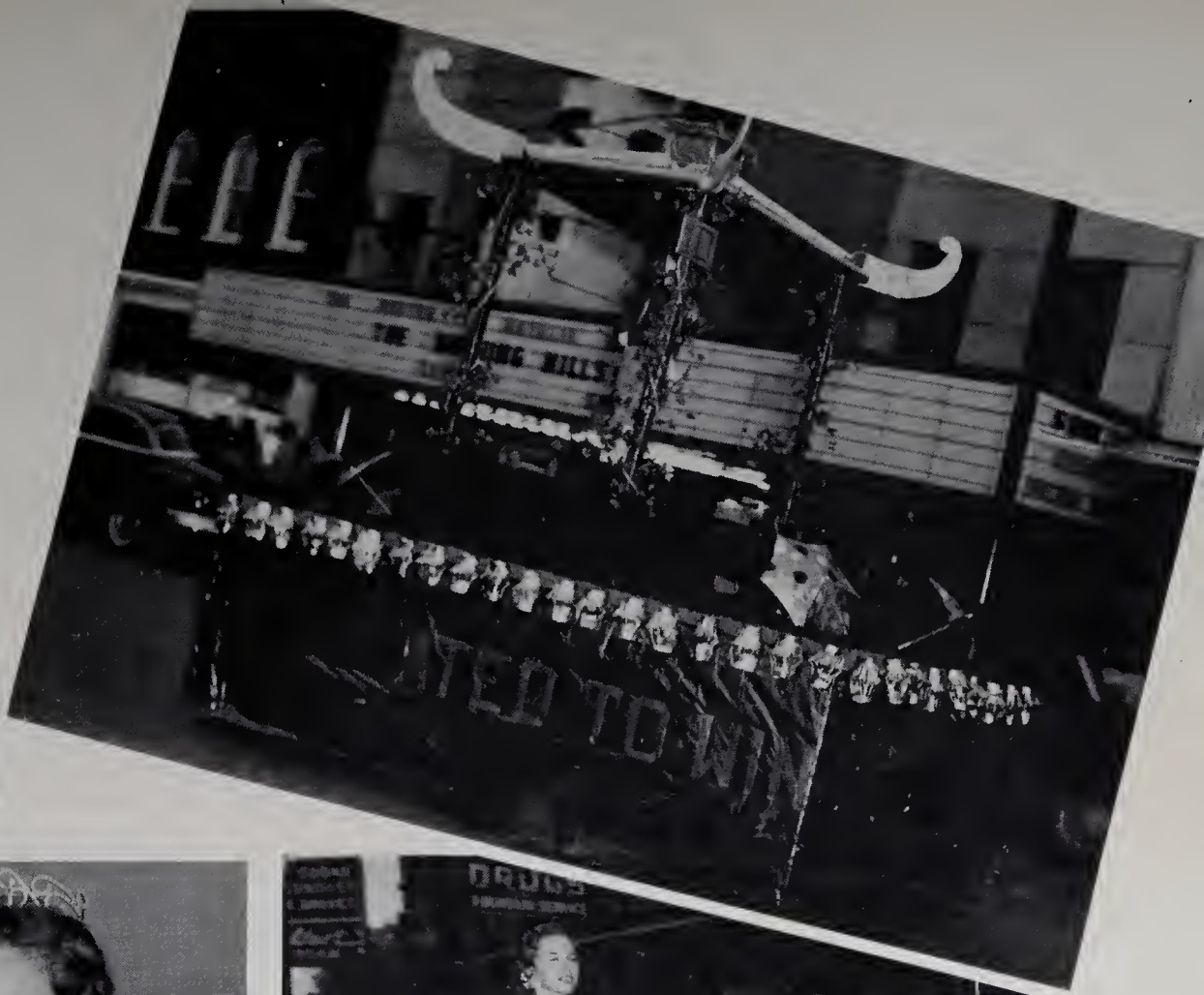
Leading the enthusiasm of the E. H. S. fans during the football and basketball seasons were our cheerleaders: Eva Barker, Brenda Vestal, Anita Reichard, Carole Moody, chief, Margaret Gentry, Pat Cockerham, and Carol Southard. Their constant attendance at games and their unflagging spirits gave our teams the incentive to win.

CHEERLEADERS

"Blue and Gold, fight! Blue and Gold, fight! Blue and Gold, Blue and Gold, fight, fight, fight!"



Carole Moody, chief, and Miss Elizabeth Prettyman, advisor, discuss new yells for the season '56-'57.



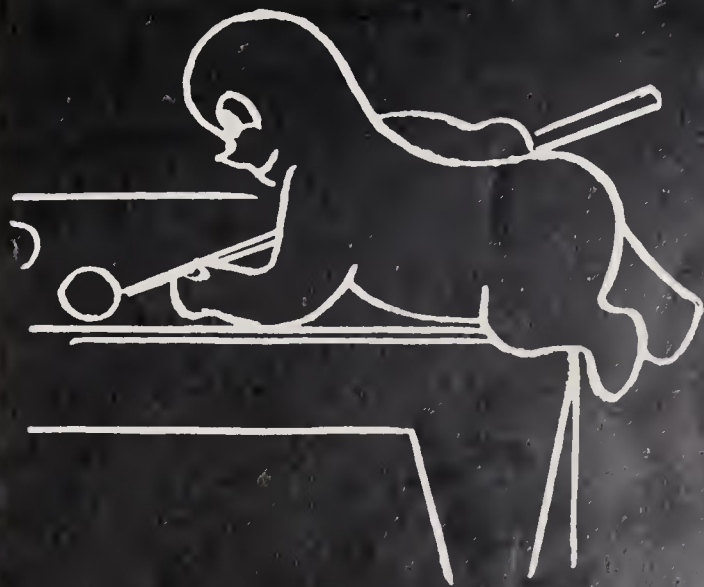
Homecoming . . . Rainy But Fun







A
T
H
L
E
T
I
C
S



NO SMOKING



First Row: Blois Grissom, Head Coach; Ronnie Cook, Lawrence Laxton, Allen Laxton, Larry Nixon, Ronnie Transou, Bud Stuart, Jerry Harris, Ross Fox. Second Row: Claude Eldridge, Assistant Coach; Will Newman, Jimmy Allen, Bruce Burchette, Wesley Smitherman, Wally Holcomb, Norman Graham, Lanny Johnson, Woodie Wiles, Clifton Noble, Assistant Coach. Third Row: Sam Newman, Pat Guyer, Leonard Darnell, Charles Rhyne, Johnny Blackburn, Bobby Adams, Jimmy West, Bill Poplin. Fourth Row: Jack Tatum, Manager; Jerry Steele, Tommy Davis, Robert Tatum, Bob Noe, Ronnie Hooper, Gale Eidson, Jimmy Shore, Mike Carpenter, Butch Eller, Manager.

FOOTBALL — '56 STYLE



Leading the way were our coach and tri-captains: Jerry, Woodie, Coach Grissom, and Mike.

SCHEDULE

| | | |
|----------|----------------|----|
| Elkin 34 | Franklin | 0 |
| Elkin 6 | Jonesville | 7 |
| Elkin 6 | Boone | 6 |
| Elkin 0 | Sparta | 6 |
| Elkin 26 | Beaver Creek | 7 |
| Elkin 20 | Millers Creek | 12 |
| Elkin 45 | West Yadkin | 0 |
| Elkin 0 | Newton Conover | 58 |
| Elkin 13 | Granite Falls | 20 |



Coach Grissom's Bucking Elks posted a record of four wins, four losses—three being very close, and one tie to better their 1955-56 record. The heartbreaker of the season was the 7-6 loss to our arch-rivals from across the river. As a whole, the season was a big success with plenty of real excitement for local fans.





First Row: Bruce Burchette, Mike Carpenter, Sam Newman, Phillip Hinshaw, Ronnie Hooper. Second Row: Wally Holcomb, Tommy Harris, Gale Eidson, Bob Noe, Claude Eldridge, Coach. Third Row: Larry Stewart, Manager, Harold Walters, Jerry Steele, Jim Shore, Butch Eller, Manager.

BOYS' BASKETBALL



To you, our Senior boys, we offer a special tribute — for making the basketball team of 1957 the best in the history of E. H. S.

Left to right: Mike Carpenter, Tommy Harris, Harold Walters, Jerry Steele, Sam Newman, Bob Noe, Phillip Hinshaw.



We can be proud of our boys' basketball team, who posted a 24-2 season record—the best in our school's history; advanced to the District Class AA finals; and won the Yadkin Valley Tournament. Only four points lay between the Elks and a perfect season—a 36-33 loss to Jonesville and in the district playoffs a 48-47 loss to Hildebran. A salute to the 1957-58 boys' basketball team, the best our school has ever produced.

SCHEDULE

| E. H. S. vs.: | <i>We</i> | <i>They</i> |
|----------------------|-----------|-------------|
| Wilkes Central ----- | 55 | 43 |
| East Wilkes ----- | 61 | 56 |
| Wilkes Central ----- | 50 | 42 |
| Mt. Park ----- | 68 | 42 |
| Yadkinville ----- | 69 | 53 |
| Sparta ----- | 73 | 44 |
| Booneville ----- | 67 | 46 |
| Jonesville ----- | 33 | 36 |
| Mt. View ----- | 72 | 64 |
| West Yadkin ----- | 75 | 49 |
| Mt. Park ----- | 57 | 46 |
| Booneville ----- | 83 | 34 |



| | | |
|--------------------|----|----|
| West Wilkes ----- | 66 | 40 |
| East Wilkes ----- | 50 | 46 |
| Jonesville ----- | 62 | 44 |
| West Wilkes ----- | 54 | 32 |
| Mt. View ----- | 60 | 41 |
| West Yadkin ----- | 46 | 40 |
| Sparta ----- | 66 | 48 |
| Beaver Creek ----- | 66 | 60 |

AAC TOURNAMENT

| | | |
|-------------------|--------------|----|
| E. H. S. 42 ----- | St. Stephens | 40 |
| E. H. S. 47 ----- | Hildebran | 48 |

YADKIN VALLEY CHAMPIONSHIP

| | | |
|-------------------|-------------|----|
| E. H. S. 80 ----- | West Yadkin | 37 |
| E. H. S. 64 ----- | West Wilkes | 53 |
| E. H. S. 64 ----- | Courtney | 47 |
| E. H. S. 71 ----- | Flat Rock | 59 |



Seated: Becky Cockerham, Mary Ann Johnson, Patsy Kennedy, Phyllis Lowe, Savanna Carrico, Janet Burcham, Toby Butner, Carol Burcham, Frankie Stewart, Dellaphine Carter, Jane Wooten, Judy Beale, Mary Lou Meed, Brenda Park. *Standing:* Manager Linda Eidson, Coach Elizabeth Prettyman, Manager Betty Frances Meed.

G
I
R
L
S'

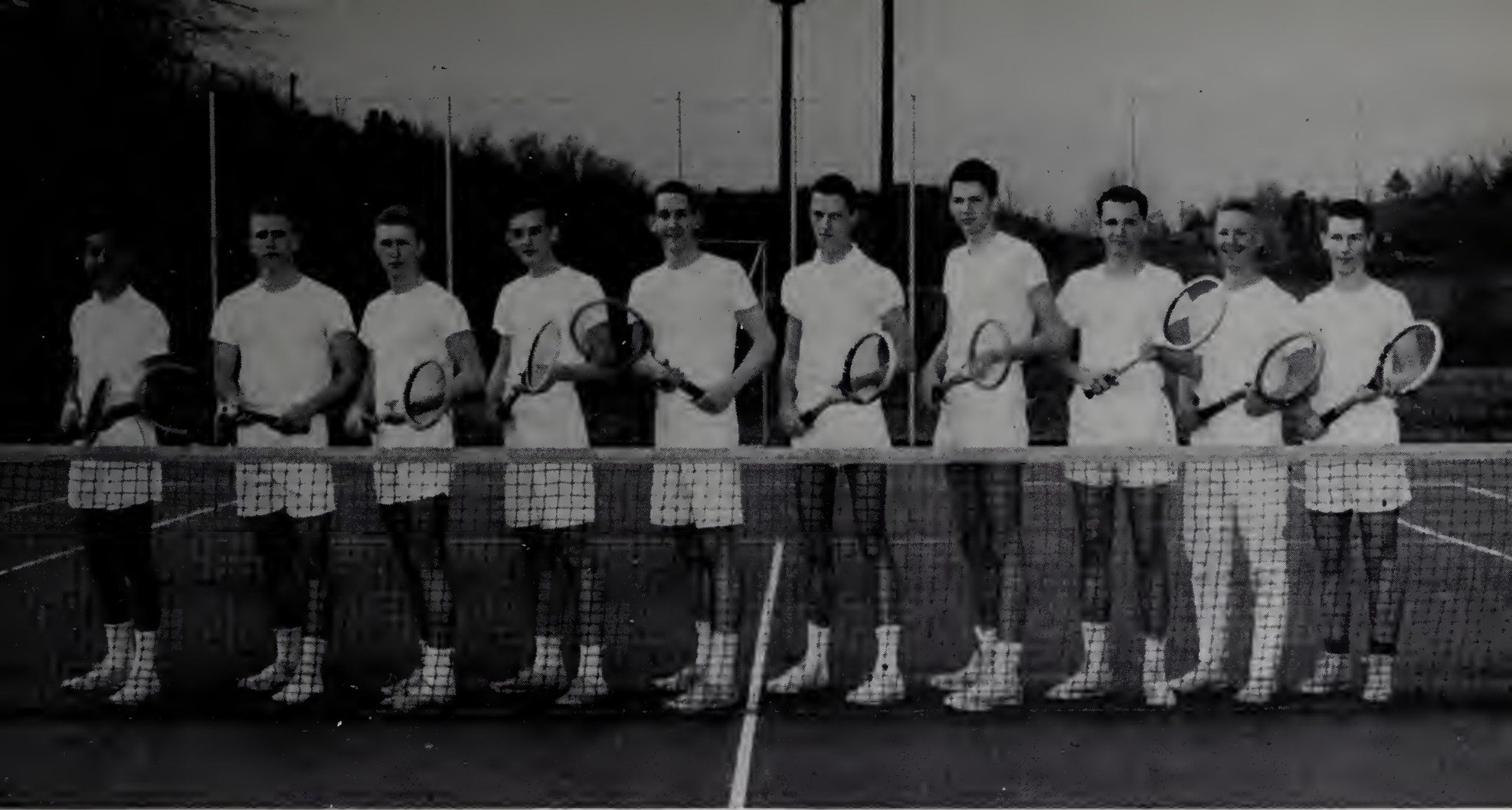
B
A
S
K
E
T
B
A
L
L



Miss Prettyman and the managers, Betty Frances and Linda, furnished moral support for the Does.

Senior co-captains, Phyllis and Frankie, are "all smiles" over the season's success.





Left to right: Bobby Hartness, Bob Noe, Wally Holcomb, Kent Eidson, Gale Eidson, Richard Royall, Jimmy Shore, Bill Davis, Lawrence Laxton, Larry Nixon.

TENNIS – UNDEFEATED

SPRING IS HERE – BASEBALL

Kneeling, Left to right: Eddie Mastin, Steve Caudill, Bud Hall, David Balzer, Coney Gentry, Dallas Nance, Johnny Blackburn, Will Newman. Second Row: Tommy Osborne, Gene Harris, Jimmy Lawrence, Tommy Harris, Pat Porter, Ronnie Hooper, James Graham. Third Row: Coach Cliff Noble, Jimmy Uldrick, Jerry Wilmouth, Sam Newman, Jerry Steele, Charles Gregory, Bruce Burchette.

"Lefty"



T
R
A
C
K



Front Row: Danny Holcomb, Bud Stuart, Jimmy Allen, Norman Graham, Phil Couch, Sammy McCain. *Back Row:* Fred Harmon, Bobby Carter, Tony Swaim, Steve Holloway, Harry Jennings, Wesley Smitherman.

GOLF — FORE!!

Left to right: Bill Poplin, Jim Finney, Mike Carpenter, Allen Laxton, Bud Stuart.



That's All, Folks!



"The Thinkers"



Who's the "cheese cake" for, Woodie?



Three Coins in the Fountain—Remember?

"How's it going, girls?"—"Rough!"



"The Three Musketeers"

Over the fence, big Jerry!







A
D
V
E
R
T
I
S
I
N
G





**Best Wishes to the
Students and Faculty
Of Elkin High School**

Treat Yourself and Your Friends to a
Visit to the Chatham Country Store
All Sorts of Bargains
Amid Pleasant Surroundings

CHATHAM MANUFACTURING COMPANY
Elkin, North Carolina

Carl Chappell

Ed Chappell

**CHAPPELL
INSURANCE AGENCY**

Complete Lines

Hotel Elkin Bldg.

Phone 171

Elkin, N. C.

Compliments of

ROYALL DRUG CO., INC.

George E. Royall

Edwin Royall

Henry Dillon

ROBERT'S MEN'S SHOP

"Cat" and "Ivy League"
Style Center

Phone 870

118 W. Main St.

Elkin, N. C.

A Good Drug Store

**ABERNETHY'S
PHARMACY**

The Rexall Store

Elkin, N. C.

AIRPARK CANTEEN

Grade "A" Cafe
Sheltered Curb Service
100 Good Food Items
Carry Out Service

Phone 888

Compliments of

MINUTE GRILL

L. G. BALFOUR COMPANY

Class Rings and Pins
Commencement Invitations
Diplomas — Personal Cards
Club Insignia — Medals & Trophies

Albert Bealle

John Bruce

P. O. Box 882
Statesville, North Carolina

Compliments of

**VALLEY DRIVE IN
THEATRE**

Your Family Theater

Always A Good Show

WHITE BROTHERS

Blocks and Building Materials
Well, Road and Drain Tile
Steel Windows
Pumps and Plumbing Supplies

Phone 627
Boonville Highway

WINEBARGER MOTOR COMPANY

Ford Sales and Services

North Bridge Street
Elkin, N. C.

Compliments of

SUPERIOR OLDS CO.

North Bridge St. Elkin, N. C.

Compliments of

ROSE'S 5 & 10

Elkin, N. C.

SUPER TIRE SERVICE

FIRESTONE RECAPPING

North Bridge St. Elkin, N. C.

*Mike have
enjoyed being with
in school of work
you. Best of luck
always. Dwight*

Compliments of

BEN FRANKLIN 5 & 10

Elkin, N. C.

Compliments of

HOLCOMB BROTHERS

Phone 254

YADKIN FINANCE CORPORATION

"Home Company for Home Folks"

Elkin, N. C.

Compliments of

**YADKIN VALLEY
PACKERS, INC.**

Processors of "Piedmont's Best"

**WINSTON ROAD
FURNITURE CO.**

"For the Things with Which You Live"

Open Nights 'til 9
Highway 67, Jonesville
Phone 1079

BEEF-VEAL-PORK

Elkin, North Carolina
Phone 545 and 546

Compliments of

DAIRY QUEEN

Elkin, N. C.

Mike -
It's been a pleasure knowing and attending school with you. I've had a good time this year playing ball together and I still appreciate your helping me pack before we left Washington. I know you will do well at State College & go on to be a big success in life. I hope that our friendship will last for a long time. I don't know where I will be next year, but I'll be thinking about you in Raleigh -

Compliments of

**KLONDIKE
FARM**

Finest Milk Produced
Anywhere

Fine Cows Produce Fine Milk

Elkin, North Carolina

Compliments of

**HARRIS AND
WAGONER, INC.**

Elkin's Leading Clothing Store

Elkin, North Carolina

Compliments of

THE ELKIN TRIBUNE

Elkin, N. C.

G & B OIL COMPANY

E. C. Boyles

Wholesale and Retail

Phone 370

Compliments of

**LAWRENCE
DRY CLEANERS**

Elkin, N. C.

Compliments of

**COLLINS PURE OIL
SERVICE STATION**

204 West Main Street
Elkin, N. C.

ELKIN FURNITURE CO.

Manufacturers of

BEDROOM FURNITURE

B. E. FAW & SONS

Since 1911

Wells — Pumps
Youngstown Kitchens
Water Heaters and Fixtures

YOUR OWN SPARK
PLUG — AND
PROUD OF IT!



You are the world's luckiest seniors, because what you do, how much you earn, how well you live depends largely on yourself. You don't mind starting at the bottom because you know most of the top jobs in North Carolina are held by men who started right there. Willingness to work and venture is the vital spark of our system of free opportunity!

DUKE
POWER COMPANY
Serving the Piedmont Carolinas

Compliments of

SPAINHOUR'S

A Modern Department Store

Elkin, North Carolina

Compliments of

McDANIEL'S DEPT. STORE

Elkin, N. C.

Compliments of

**BRENDLE CASH
WHOLESALE, INC.**

J. D. Brendle

Compliments of

WILLIAMS ELECTRIC CO.

Elkin, N. C.

Compliments of

**PEPSI-COLA
BOTTLING COMPANY**

Phone 590
Elkin-Jonesville, N. C.

**ELKIN LUMBER AND
MANUFACTURING CO.**

"Everything to Build Anything"

Phone 68
Elkin, N. C.

Compliments
of

DUN-WELL CLEANERS

**GRIFFIN'S SPORTING
GOODS AND GIFTS**

Elkin, N. C.

Athletic Equipment, Office
and School Supplies

**BROWN'S
MACHINE SHOP**

Electric and Acetylene
Welding

Phone 237



Compliments of

The Bank of Elkin

Member of the Federal Deposit
Insurance Corporation

Elkin

Jonesville

North Carolina

Phone 80

Compliments of

CHARLES' MOTEL

Compliments of

BLACKWELDER FURNITURE CO.

The Home of Quality Furniture
For Less Money

Open 'til 7:30 P.M.

Elkin Ph. 150

Jonesville Ph. 550

HENSEL-FULLER PULPWOOD COMPANY

Elkin, N. C.

Compliments of

J. C. PENNY CO.

Phone 138

108 E. Main St.

Elkin, N. C.

*Mike -
 Ple. have it we
 had from this year. d
 know that you won't forget
 the senior play on the Washington
 trip. You're probably be chief cook
 at the Walbrook - Ontario for the cake
 for a drink baked year has ready been
 loose of fun.
 (Doolin)*

**H. BEESON
 MUTUAL INSURANCE**

Phone 17
 Elkin, N. C.

Compliments of
WESTERN AUTO

Home-owned
 Elkin, N. C.

Compliments of
THE JONESVILLE GRILL

Jonesville, N. C.

ISENHOUR'S JEWELRY

Gifts That Last
 Main Street
 Elkin, N. C.

W. M. WALL

Watches, Diamonds
 and Repairs

**CARL W. STEELE
 JEWELRY STORE**

Watches — Diamonds — Jewelry
 Elkin, N. C.

Compliments of
**LUCY GRAY'S
 BEAUTY SHOPPE**

Phone 380
 Elkin, N. C.

Compliments of
SURRY HARDWARE

Elkin, N. C.

Compliments of

REEVES-LYRIC THEATERS

Elkin, N. C.

Compliments of

SMOOT'S AUTO SERVICE

Elkin, N. C.

**MOODY'S TEXACO
GROCERIES**

Homer Moody, Owner

Phone 1706J

Highway 21

State Road, N. C.

SNOW MOTOR CO.

136 South Bridge St.

Phone 613

Sales — BUICK — Service

Compliments of

**COCKERHAM
BARBER SHOP**

Elkin, N. C.

ROSE & DAY, INC.

Pontiac Sales and Service

Phone 345

Night Phone 430

24-Hour Wrecker Service

Compliments of

THE BASKETERIA

Elkin, N. C.

**CASH & CARRY
STORES, INC.**

Wholesale

Groceries, Feeds, Meats
and Notions

Phone 230

**PEELE & THOMPSON
RADIO, TV APPLIANCE
COMPANY**

RCA — Zenith — Motorola
Stromberg Carlson
C. E. Peele — A. K. Thompson
Phone 362 124 W. Main St.
Elkin, N. C.

**MATHIS-PARDUE
FURNITURE CO.**

"Guarantee Best Quality
For Less Money"

Phone 955
1131 Elk Spur St. Elkin, N. C.

Compliments of

MARTIN BAKE SHOP

Jonesville, N. C.

Compliments of

ELK PHARMACY

Phone 310
Elkin, N. C.

Always at Your Service

**CAROLINA
BLOOMER
COMPANY**

Elkin, North Carolina

Rayon and Nylon

Non-run Tricot Panties

Compliments of

ROY'S PLACE

Elkin, North Carolina

Compliments of

ELK PHARMACY

Phone 310
Elkin, N. C.

Always at Your Service

Compliments of

ALBERT BEALLE

Statesville, N. C.

Representative for
L. G. Balfour Company

Compliments of

THOMASSON FLORIST

Flowers for All Occasions

Congratulations and Best Wishes
To the Class of 1957

**ELKIN-JONESVILLE
BUILDING AND LOAN
ASSOCIATION**

Compliments of

**ALEXANDER-STEVENSON
FUNERAL HOME**

Phone 800
Elkin, North Carolina

K & B SERVICE STATION

Roger W. Sprinkle, Proprietor

GOODYEAR TIRES — BATTERIES
SINCLAIR PRODUCTS

Phone 280

Elkin, N. C.

Compliments of

WHITE SWAN LAUNDRY

Dry Cleaning

Compliments of

MOSLEY AND REECE

Elkin, North Carolina

F. W. CHEVROLET, INC.

Elkin, N. C.

Sales and Super Service
Wrecker Service

Night Phone 775
Day Phone 255

SPONSORS

Belk-Doughton Company

Harris Electric Company

Carolina Ice and Fuel

A. O. Bryan

Hall-Knott and Edwards

Joe Gilliam

Doug Darnell

State Road Hardware

L. G. Balfour

R. Lewis Alexander

Bi-Rite Self-Service Grocery

Dr. W. B. Reeves

Dr. M. O. Fox

U. S. Navy

Dr. V. W. Taylor

Master Craft Shoe Shop

Luffman's Grocery

George A. Brian & Company

Albert Bealle

Boose Flower Shop

Elmore's Grocery

Mike.

It has been a
rather eventful high
school life for all of us
and you being a member
of the class has made it even
more eventful and fun. Knowing
you all these years has been an
inspiration for me. You have a wonderful
personality, so just keep it that way and
you will go so far in life. You'll even surpass
your goal and go way past the top in your field!

Best of luck in anything you try & I hope you
are always happy.

Love,
Phillip Allen



Dear Mike, (I know)
I want you
to know that I
think you are one of
the finest persons and
best "pals" I know, if
you know what I mean.
Really, Mike, you've
really been lots of fun this
year and I know I've really
studied hard (esp. S. literature!)
things that you are forever saying
just add to your bubbling personality!
Never forget our wonderful
times working on the Senior play! But
really Grover, I don't think you are
that ~~big~~ shy around girls!
year but study hard! Always remember
our wonderful Senior year.
Love ya,
Gale Lewis (Connie)







