

the 1959

eik







the elk

nineteen hundred and fifty-nine



*published by the elk staff of
elkin high school
elkin, north carolina*





SOUTH HALL
1900

presenting the elk staff



Alice Cranford, Editor; Ellen Cooke, Assistant Editor; Jane Redmon, Photography Editor; Patricia Allen, Art Editor; George Hart, Business Manager; Blanche Poplin, Class Editor; Alberto Montanari, Circulation Manager; Betty Meed, Sports Editor; Bill Overcash, Advertising Manager.



foreword

The experiences which we undergo in the formative years of our lives will provide us with never-to-be-forgotten memories. A major part of these years is spent in the process of procuring for ourselves an education. While so doing we come into contact with many people, organizations, and activities. With this in mind the 1959 Elk staff has prepared this book, hoping that it will afford you a glimpse into your school life which you will treasure now and in years to come.

table of contents

foreword	5
dedication	6
administration	8
faculty	9
classes	11
activities	49
athletics	63
advertising	75





mr. blois grissom

.....
d
e
d
i
c
a
t
i
o
n
.....



Our 1959 Yadkin Valley
Conference Hero—



Tops in teaching, too!

Our '59 Elk we proudly dedicate to our beloved coach, Mr. Blois Grissom, whose untiring efforts, guidance, and lovable understanding are a tribute to Elkin High School's reputation for success.



Superintendent
Mr. N. H. Carpenter

School Board

- Dr. V. W. Taylor, Jr.
- Mr. Richard J. Atkinson
- Mr. Hoke Henderson
- Mr. N. H. Carpenter
- Mr. John Henry Haynes
- Mr. Wade Hampton

...
a
d
m
i
n
i
s
t
r
a
t
i
o
n
...



Principal
Mr. Fred W. Rogers





Mr. Paul Atwell



Mrs. Mary Leslie Bivins



Mr. Blois Grissom



Mrs. Lydia Brendle



Mr. William A. Groce, Jr.



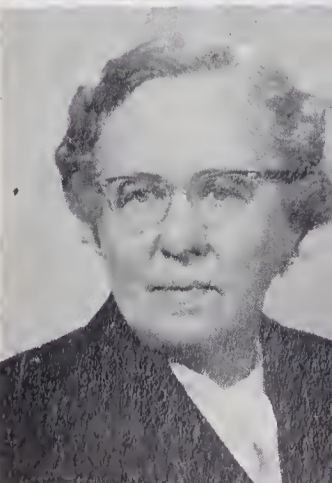
Miss Emma Cooke



Mr. Raymond C. Hayes



Mr. Claude Eldridge



Miss Mary Holland

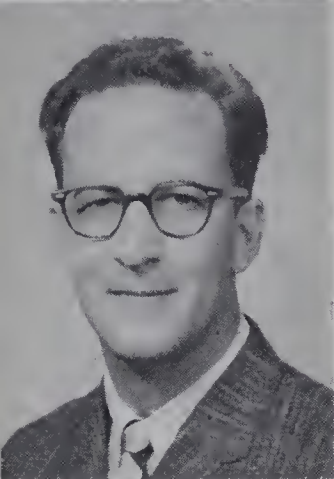
.....
f
a
c
u
l
t
y
.....



Mr. Bert E. Joines



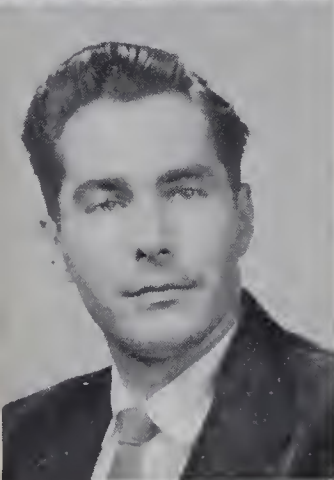
Mr. Clyde A. Parker



Mr. Grady Kilby



Miss Ann Sebastian



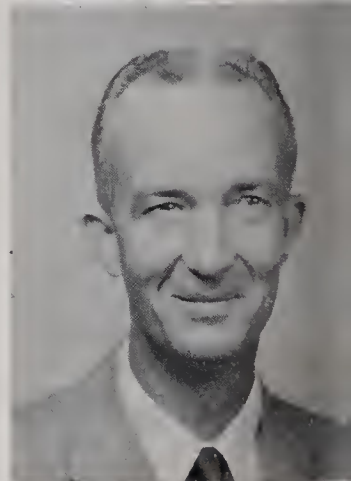
Mr. Charles Madison



Miss Myra Jane Thomas



Mrs. Adrian Nixon



Mr. Homer Walker



Mrs. May B. Pardue



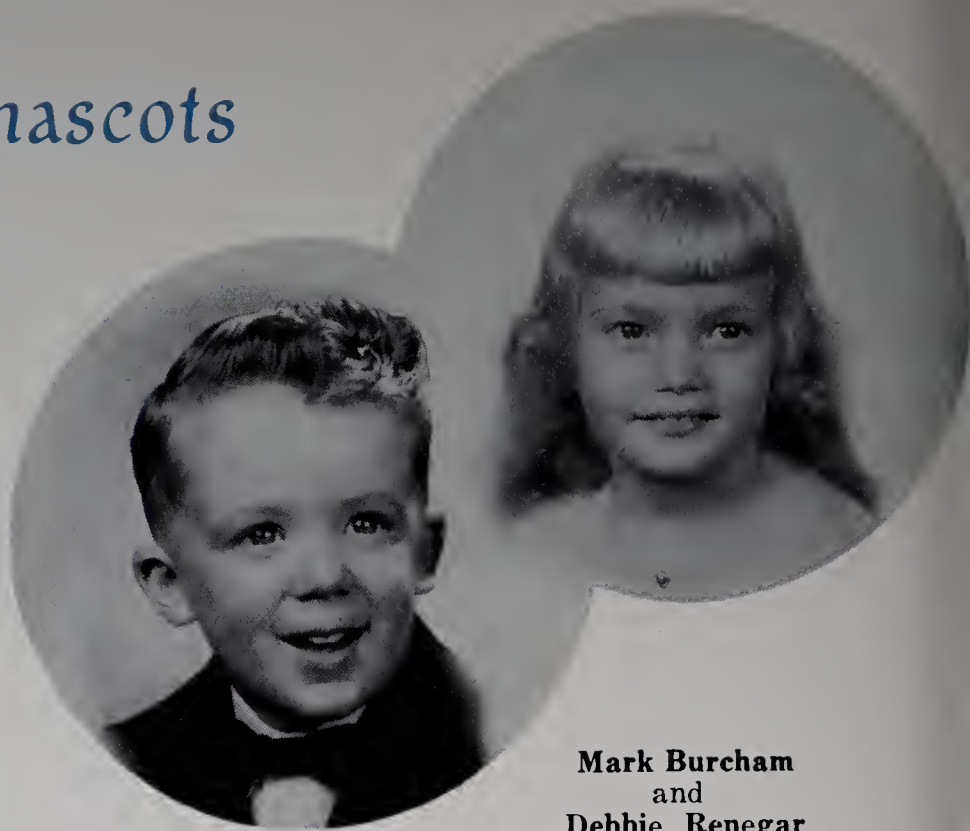
Mr. Robert Walker

.....
f
a
c
u
l
t
y
.....



classes

mascots

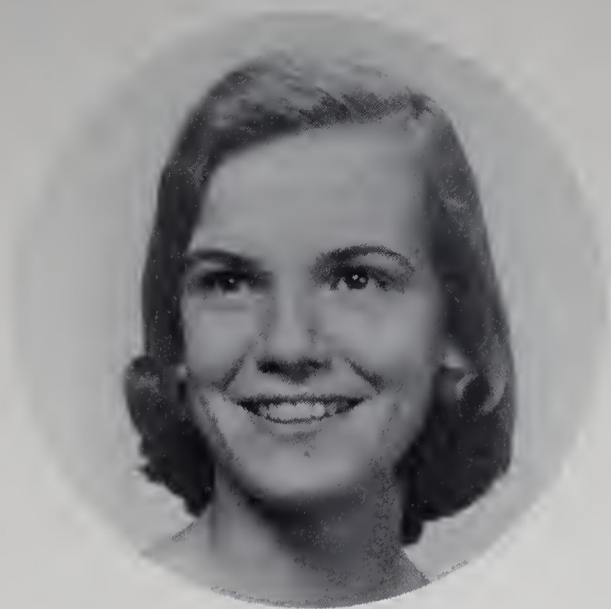


**Mark Burcham
and
Debbie Renegar**



class officers

President.....Norman Graham
Vice-Pres.....Wesley Smitherman
Secretary.....Wanda Blevins
Treasurer.....Charles Rhyne



Belvin Louise Adams

*quiet . . . engaged . . . Chatham
Country Store*

Nancy Ann Adams

*Spainhour's . . . reserved . . .
Air Force???*

Patricia Anne Allen

*"Teenuig" . . . Pat . . . original
. . . hot-rod*

.....seniors.....

Mary Etta Armfield

*full of life . . . Buick convertible
. . . food fanatic . . . "Etta"*

Mary Lee Bengel

*nurses aid . . . '58 Ford . . . long
pony-tail*

Virginia Gaye Beulin

*always smiling . . . Rex . . . jet-
black hair*





Wanda Lynn Blevins
*loves to sing . . . soft, curly hair
 . . . "sugar and spice"*



Ted Ray Brinegar
*slightly bashful . . . Plymouth
 coupe . . . physics and chemistry*



Dewey Wallace Byrd
*Jonesville bound . . . "Wally"
 . . . speedo*

.....seniors.....

Wanda Paulette Byrd
dimples . . . pleasant . . . Ronald



Savanna Emolyne Carrico
*so considerate . . . basketball . . .
 loves people*



James David Caudill
*serious . . . hard worker . . .
 KN4QYT*





Bennie Gray Caudle

girls . . . easy going . . . good sport



James Wesley Chatman

Rosa Lee . . . unsettled . . . great guy



Dorothy Elizabeth Chipman

sweet disposition . . . good-natured . . . Kenneth

.....seniors.....

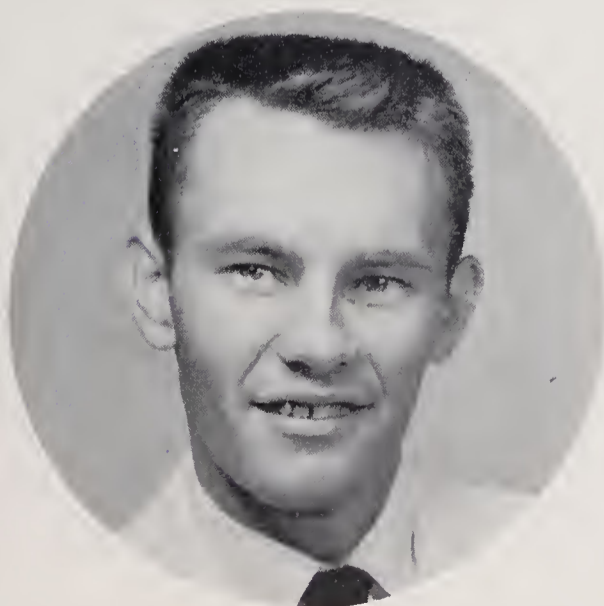
Donald Hughes Couch

love that music . . . electronics . . . Gail . . . artistic



Tommy Eugene Couch

"Tom Cat" . . . crazy, man, crazy! . . . photography



Emily Ellen Cooke

Yea, Carolina! . . . "The Happy Homemaker" . . . bridge . . . do-re-mi





Alice Frances Cranford
*Homecoming Queen . . . "twinkle
 tocs" . . . chief Rockette*



Mildred Marie Darnell
*look for her at Spainhour's . . .
 platinum hair . . . Jackie*



Joyce Ann Day
*efficient . . . '40 Ford . . . office
 . . . R.G.*

.....seniors.....

Thomas Mason Dillon
*slowpoke . . . perfectionist . . .
 golfer???*

Linda Jane Eidson
*easy to get along with . . .
 Royall's . . . basketball—her
 favorite*

Peggy Haynes Eskridge
*good things come in small pack-
 ages . . . "band of gold" . . .
 vivacious*





Frank Richard Evans

*Wake Forest . . . ping-pong . . .
laughable*



Margaret Ann Felts

*integrity . . . cheery charm . . .
"Moments to Remember"*



Mary Kay Francis

*gay . . . hobby — good time
. . . co-operative*

.....seniors.....

William Jerry Gaither

*Elvis haircut . . . Shorty . . .
"J-Bird"*



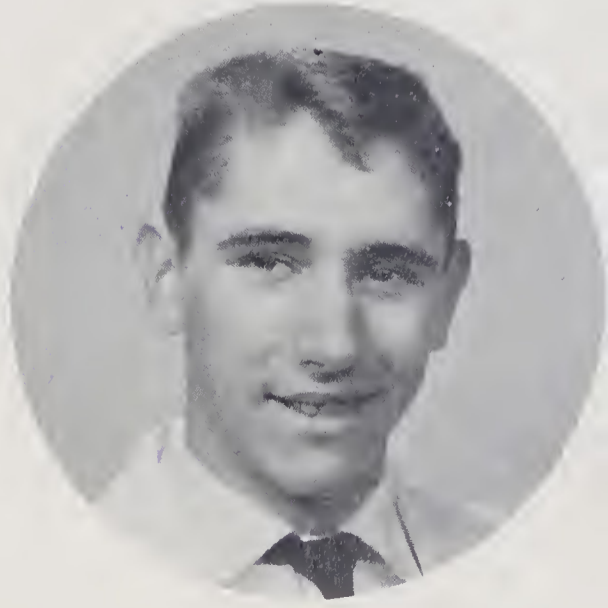
Dorothy Marie Gambill

*dainty . . . likeable . . . chatter-
box*



Frank James Gentry

*friendly . . . Thunder Road . . .
Queen Bess*





Belva Mae Gentry

dimples . . . Winnie . . . that sparkle on her finger



George Gwyn Gilliam

"Cotton" . . . gentle as a lamb . . . man of few words



Edward Norman Graham

A F S — Deutschland . . . Mr. President . . . math whiz

.....seniors.....

Charles Lennie Gregory, Jr.
"Greg" . . . football . . . hearty



Thomas Samuel Guyer
admirable qualities . . . diligent . . . "Big Sam"



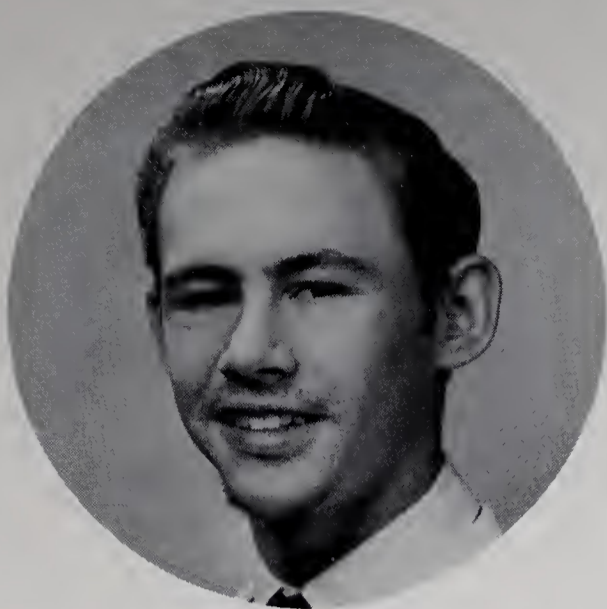
Deanna Louise Hall
Yankee . . . million-dollar smile . . . "Dce"





Benny Bryant Hampton

*gentleman . . . farming . . . bus
number eight*



James G. Hanks

*diminutive . . . sleepy . . . hard
worker*



Agatha Mae Harris

"Aggie" . . . records . . . tallest

.....seniors.....

Charles L. Harris

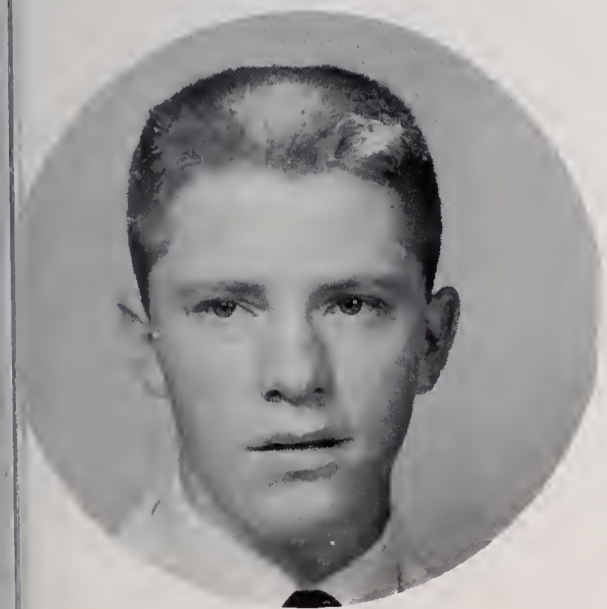
*freckles . . . industrious . . .
polite*

Sylvia Anne Harpe

*short 'n sweet . . . lighthearted
. . . "sing, girl, sing"*

George Andrew Hart, Jr.

*curly hair . . . personality plus
. . . athletic gem*





Patsy Jo Hemric

*Belk's . . . brown eyes . . . love
and marriage*



Samuel Lee Hinson

*"Road Burner" . . . talkative . . .
Power-pak*



Jimmie Phyllis Irion

*"Phil" . . . Tennessee . . . girl
of few words*

.....seniors.....

Wilda Mae Jackson

*secretary . . . big smiles . . .
cute*

Lanny Ray Johnson

*"Lennie" . . . inviting eyes . . .
neat dresser*

Mary Anne Johnson

*"Myrt" . . . bubbling over . . .
WIFM*





Robert Hamilton Lankford, III
*dizzy fingers . . . carrot-top . . .
. . . bridge shark . . . U.N.C.*



Henry Allen Laxton
"Poochie" . . . devilish disposition . . . witty



Barbara Kay Long
petite . . . marshal . . . yakety-yak

.....seniors.....

Johnsye Ann Martin
*sweet as apple pie . . . "Johnny"
. . . dependable*

Betty Frances Meed
*vim and vigor . . . that laugh!
. . . "Frances"*

Mary Louise Meed
"Muddy" . . . capable . . . energetic editor





Alberto E. Montanari
"Al" . . . exchange student . . .
"Ciao"



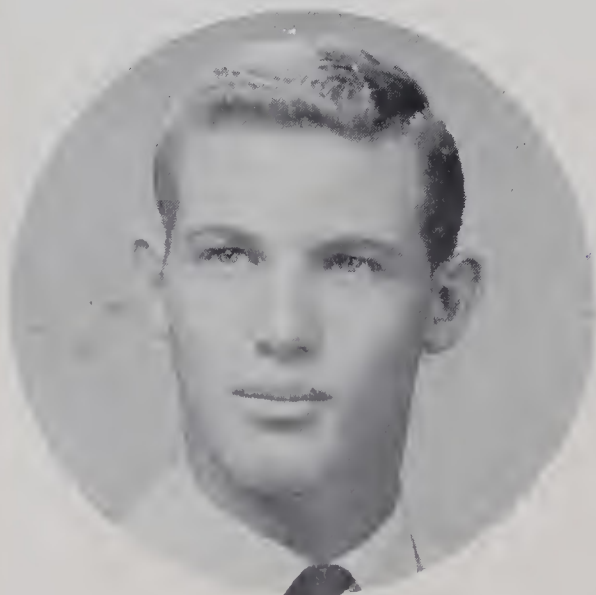
William Carol Newman
"Will" . . . handsome . . . little
coach . . . tank



Thomas Harvey Osborne
"Ozzie" . . . basketball fan . . .
Grey Ghost

.....seniors.....

William Darrell Overcash
"Bill" . . . husky . . . tri-captain
. . . pesters Mr. Walker



Garland Burnis Pardue
fun-loving . . . hustler . . . track



Margaret Adelaide Parrott
softball enthusiast . . . "Margie"
. . . hates to study





Blanche Marie Poplin

*peaches and cream complexion
... winning personality ...
nonchalant*



Jane Barker Redmon

*Sara or Jane? ... conscientious
... poised*



Sara Ellis Redmon

*Which twin has the Toni? ...
theater ... neat as a pin*

.....seniors.....

Charles Gwyn Rhyne

*quiet ways ... thoughtful ...
Chatham's*



Wanda Sue Settle

*poetry ... easy going ... nice
to know*



Jacquelyn White Simmons

*sparkling eyes ... lovely to look
at ... "Jackie"*





Mary Rachel Sloop

sharp dancer . . . silent type . . . nice

Sammy Gray Sloop

"Little Red" . . . good-natured . . . loves sports

Richard Wesley Smitherman

Brain, Inc. . . . "Wes" . . . imaginative

.....seniors.....

Helen Hudspeth Sparks

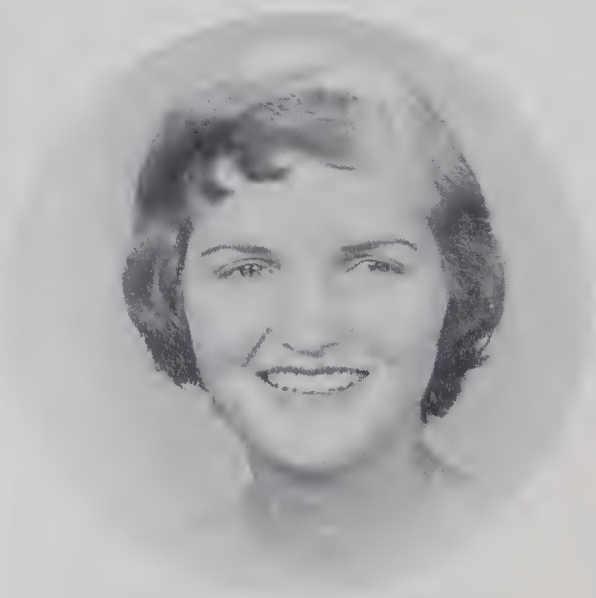
married . . . look for her at Chatham's . . . good cook

Bunny Jane Thompson

gossip galore . . . my, those eyes! . . . anyone for an argument?

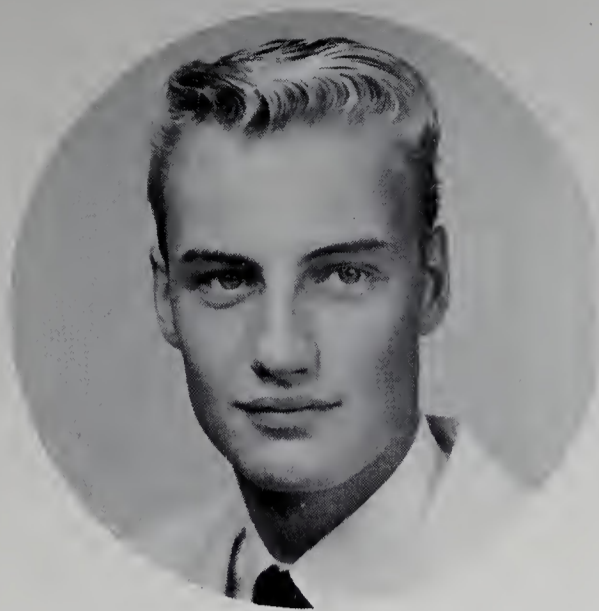
Lynda Lee Tinsley

"Cookie" . . . out-of-town fun . . . magic moments





Ronald Gray Transou
Mr. Touchdown E.H.S. . . .
flirt . . . physique



James Alvin Uldrick
dreamy eyes . . . tall and blonde
. . . courteous



Charles Jackson Wampler
"Jack" . . . Winston-Salem . . .
science

.....seniors.....

Jerry Ann Weatherman
sweet personality . . . Jackie's
pal . . . a doll



Johnny Burton Welborn
black hair . . . timid . . . likeable



Jerry Eldon Wilmoth
"Slim the Sailor" . . . nice-
looking . . . big, brown eyes





Carol Ann Yarboro

*long eyelashes . . . slightly shy . . .
petite*

“By courage and faith we seek the higher things.”

Class Flower: Red Rose

Class Colors: Royal Blue and White

Seniors, we have reached the end
Of this our first plateau;
Fond memories linger with us
As onward we must go.

We'll miss familiar halls and faces,
Favorite studies and well-known places;
We hope to leave behind some traces,
Of our work done here.

Opportunities lie ahead
For those of us who seek
To carry on and not to dread
The challenges we meet.

As we go on our separate way,
May each of us live every day
As we were taught here in this school,
With every lesson and every rule.

Wanda Settle, Poet
Class of '59

Belvin Louise Adams

F.H.A. 2, 3, Parliamentarian 3; D.E. Club 4; Intramurals 3.

Nancy Ann Adams

F.S.A. 3; Intramurals 3; D.E. Club 4.

Patricia Anne Allen

Latin Club 1, 2, Treasurer 2; Beta Club 3, 4; Tri-Hi-Y 1, 2, 3, Secretary 2; Inter-Club Council 2; Interstate Tri-Hi-Y Conference 2; Majorette 1, 2; Intramurals 1, 2, 3, 4; Elkin Rockettes 3, 4; Superlative 4; Art Editor of THE ELK 4; Teening Column 4; B-Sharp Junior Music Club 3, 4; Yadkin Valley Junior Garden Club 3, 4; THE ELK ANTLER Staff 4.

Mary Etta Armfield

Tri-Hi-Y 1, 2, 3, Parliamentarian 2, Vice-President 3; Blue Ridge Assembly 2; Latin Club 1, 2; Student Council 2; B-Sharp Junior Music Club 2, 3, 4; Yadkin Valley Junior Garden Club 2, 3, 4, Treasurer 3, President 4; Intramurals 3; Girls' State 3; Beta Club 3, 4; Beta Club Convention 3; Marshal 3; Superlative 4.

Mary Lee Benge

D.O. Club 4; 4-H Club 1; Intramurals 1.

Virginia Gaye Beulin

4-H Club 1; Tri-Hi-Y 2, 3; D.O. Club 4; Band 4; Intramurals 3.

Wanda Lynn Blevins

Class Secretary 1, 3, 4; Homecoming Attendant 3; Intramurals 2, 3; Glee Club 4; Secretarial Club 3, Reporter 3; Associate Editor of THE ELK ANTLER 4; Superlative 4.

Ted Ray Brinegar

Science Club 1, 2; Beta Club 3, 4; D.O. Club 3; Intramurals 1.

Dewey Wallace Byrd

D.O. Club 3, 4.

Wanda Paulette Byrd

F.H.A. 1, 2, 3, Parliamentarian 2, Song Leader 3; D.O. Club 4, Treasurer 4; Glee Club 2, 3; Intramurals 2.

Savanna Emolyne Carrico

Basketball 1, 2, 3, 4; Monogram Club 3, 4; Intramurals 1, 2, 3, 4; Glee Club 4; Tri-Hi-Y 1, 2, 3, 4; Superlative 4; B-Sharp Junior Music Club 3, 4; Latin Club 1.

James David Caudill

D.O. Club 3, 4; Football 4.

Bennie Gray Caudle

4-H Club 1, 2, 3, 4; D.O. Club 3, 4; Bus Driver 2; Intramurals 1, 2.

James Wesley Chatman

Band 2; D.O. Club 3, 4.

Dorothy Elizabeth Chipman

F.H.A. 2, 3, 4; Glee Club 4; Intramurals 1, 2; Library Assistant 3.

Donald Hughes Couch

F.T.A. 1, President 1; 4-H Club 1, 2; Band 1, 2, 3; D.O. Club 3, 4; Bus Driver 1, 2; Science Club 1, 2.

Tommy Eugene Couch

D.O. Club 3, 4.

Emily Ellen Cooke

Tri-Hi-Y 1, 2, 3, Chaplain 1, 2, 3; Inter-Club Council 1, 2; Latin Club 1, 2; Intramurals 1, 3; Student Council 1, 3; Beta Club 3, 4; Marshal 3; Assistant Editor of THE ELK 4; Glee Club 4; Eighth Annual N. C. High School Radio-TV Institute 3; Yadkin Valley Junior Garden Club 2, 3, 4; B-Sharp Junior Music Club 1, 2, 3, 4, Secretary 2, President 4; Superlative 4; Delegate to Music Educators National Conference Golden Anniversary High School Chorus, St. Louis, Mo., 1; ELK ANTLER Staff, 4.

Alice Frances Cranford

Beta Club 3, 4; Latin Club 1, 2, Secretary 2; Tri-Hi-Y 1, 2, 3, Vice-President 2; Chief Marshal 3; Intramurals 1, 2, 3; Glee Club 4; Girls' State 3; B-Sharp Junior Music Club 1, 2, 3, 4, Treasurer 3, 4; Yadkin Valley Junior Garden Club 1, 2, 3, 4; Miss Elkin '57; Homecoming Queen 4; Elkin Rockettes 3, 4; Editor of THE ELK 4; ELK ANTLER Staff 4.

Mildred Marie Darnell

Band 1; F.H.A. 2; F.S.A. 3; Intramurals 3; D.E. 4.

Joyce Ann Day

F.S.A. 3; Intramurals 3; D.E. Club 4, Treasurer 4.

Thomas Mason Dillon

Latin Club 1, 2; Junior Leaders Club 1, Secretary 1; Intramurals 1, 3, 4; Hi-Y Club 2, 3, Chaplain 3; Beta Club 3, 4, Chaplain 4; Beta Club Convention 3; Football Manager 3; Track 3, 4; Monogram Club 4, Chaplain 4; B-Sharp Junior Music Club 4; Student Council 4.

Linda Jane Eidson

Latin Club 1, 2; Library Club 2, Secretary 2; Basketball 2, 3, 4; Manager 2; Monogram Club 4; B-Sharp Junior Music Club 2, 3, 4; Tri-Hi-Y 1, 2, 3, 4; Beta Club 3, 4, Beta Club Convention 3; Glee Club 4; Senior Girl Scouts 1, 2, 3; Intramurals 1, 2, 3, 4; F.T.A. 1, 4.

Peggy Haynes Eskridge

Hamlet Avenue School 1; Townsville School 2; Beta Club 3, 4; Tri-Hi-Y 3, 4, Chaplain 3, President 4; Elkin Rockettes 3; Monogram Club 4; Spanish Club 3; Glee Club 4; Basketball Manager 3; Intramurals 3, 4; Library Assistant 3; Society Editor of THE ELK ANTLER, 4.

Frank Richard Evans

Leaders Club 1, 2; Hi-Y Club 2, 3; Glee Club 4; Latin Club 1, 2; Tennis 3, 4; Intramurals 1, 2, 3, 4; B-Sharp Junior Music Club 4; Superlative 4; Beta Club 3, 4, Treasurer 3; Beta Club Convention 3.

Margaret Ann Felts

Library Club 1, 3; F.S.A. 3; 4-H Club 1; Intramurals 1; D.E. Club 4.

Senior Statistics

Betty Frances Meed

Music Club 3, 4; Beta Club Convention 3; Latin Club 1, 2; Monogram Club 4; Sports Editor of THE ELK 4; Elkin Rockettes 4; Tri-Hi-Y 1, 2, 3, 4, Blue Ridge Hi-Y Congress 3, Tri-Hi-Y Conference 4; Office Assistant 3; Intramurals 1, 2, 3; Basketball 2, 3, Manager 2, Scorekeeper 3; Cheerleader 1, 2; Scouts 1, 2, 3, 4, National Girl Scout Roundup 1; B-Sharp Junior Music Club 1.

Mary Louise Meed

Latin Club 1, 2; Beta Club 3, 4; Delegate to State Beta Club Convention 3; Tri-Hi-Y 1, 3; Library Assistant 1, 2, 4; Band 3; Basketball 2, 3; Intramurals 1, 2, 3, 4; Superlative 4; Student Council 3, W.D.N.C.S.C.C. 3; Scouts 1, 2, 3, 4, President 1, 2, Vice-President 3, Assistant Leader 4; Editor of THE ELK ANTLER 4.

Alberto Montanari

Liceo Classico Giuseppe Parini, Milano, Italy 1, 2, 3; Beta Club 4; American Field Service Foreign Exchange Student 4; B-Sharp Junior Music Club 4; Circulation Manager of THE ELK 4; Student Council 4, N.C.S.C.C. 4; Tennis 4; Wrestling 4; Track 4.

William Carol Newman

Football 1, 3, 4, Tri-Captain 4, All-Conference 3, 4; Leaders' Club 1; Basketball 4; Baseball 2, 3, 4; Track 2, 3; Monogram Club 2, 3, 4; Hi-Y Club 2; Library Assistant 4.

Thomas Harvey Osborne

Junior Varsity Football 1; Football 4; Junior Varsity Basketball 2; Basketball 3, 4; Baseball 1, 2, 3, 4; Intramurals 1, 2, 3, 4; Monogram Club 2, 3, 4; Hi-Y Club 2, 3; Leader's Club 1, 2, 3, Vice-President 1.

William Darrell Overcash

Statesville High School 1, 2; Football 3, 4, Tri-Captain 4; Track 3, 4; Monogram Club 4; Glee Club 4.

Garland Burnis Pardue

Beta Club 3, 4; Monogram Club 2, 3, 4, Vice-President 4; Track 2, 3, 4; Intramurals 2, 3, 4; Spanish Club 3; Glee Club 3; Boys' State 3.

Margaret Adelaide Parrott

Scouts 2, 3, 4; Tri-Hi-Y 1, 2, 3, 4; Latin Club 1, 2; Beta Club 3, 4; Cheerleader 1, 2; Softball 4; Intramurals 2, 3, 4; Club Editor of THE ELK ANTLER 4.

Blanche Marie Poplin

Latin Club 1, 2, Reporter 2; Tri-Hi-Y 1, 2, 3, Delegate to Blue Ridge Tri-Hi-Y Assembly 2; Cheerleader 2; Intramurals 1, 2, 3, 4; Beta Club 3, 4; Student Council 4; Class Editor of THE ELK 4; THE ELK ANTLER Staff 4.

Jane Barker Redmon

Cheerleader 1, 2; Latin Club 1, 2; Tri-Hi-Y 1; Beta Club 3, 4; Library Assistant 4; Photography Editor of THE ELK 4; Yadkin Valley Junior Garden Club 2, 3, 4, Yearbook Chairman 3, Vice-President 4; B-Sharp Junior Music Club 2, 3, 4, Publicity Chairman 3, 4; Intramurals 3; THE ELK ANTLER Staff 4.

Sara Ellis Redmon

Cheerleader 1, 2; Latin Club 1, 2; Tri-Hi-Y 1; Beta Club 3, 4; Library Assistant 4; Fashion Editor of THE ELK ANTLER 4;

Yadkin Valley Junior Garden Club 2, 3, 4, Yearbook Chairman 3; Scrapbook Chairman 4; B-Sharp Junior Music Club 2, 3, 4, Publicity Chairman 3, Treasurer 4; Intramurals 3.

Charles Gwyn Rhyne

Football 1, 2, Football Manager 3; Student Council 2; Beta Club 3, 4; Monogram Club 4; D.O. Club 4, President 4; Class Treasurer 4.

Wanda Sue Settle

F.H.A. 4; Glee Club 4; F.S.A. 3.

Samuel David Shore

D.O. Club 3, 4.

Jacquelyn White Simmons

Beta Club 3, 4; Intramurals 2, 3; D.E. Club 4, Vice-President 4; F.S.A. 3.

Mary Rachel Sloop

4-H Club 1; Tri-Hi-Y 3; D.E. Club 4.

Samuel Gray Sloop

D.O. Club 4.

Richard Wesley Smitherman

Latin Club 1, 2, Vice-President 2; Leaders' Club 1, President 1; Junior Varsity Football 1; Football 2; Hi-Y Club 2, 3, Interstate Hi-Y Conference 3; Track 2, 3, 4; Junior Varsity Basketball 2; Basketball 3, 4; Student Council 1, 4, Treasurer 4; Beta Club 3, 4, President 4, State Beta Club Convention 3; Monogram Club 4, Sergeant-at-Arms 4; Intramurals 1, 2, 3, 4; THE ELK ANTLER Staff 4; Class Treasurer 2; Class Vice-President 3, 4; Superlative 4.

Bunny Jane Thompson

Tri-Hi-Y 1, 2, 4; Latin Club 2; F.H.A. 2; Intramurals 1, 2, 3; Feature Editor of THE ELK ANTLER 4; Beta Club 3, 4, State Beta Club Convention 3; Library Assistant 1; Girl Scouts 1, 2, 3, 4; Cheerleader 1, 2.

Lynda Lee Tinsley

Spanish Club 3; Intramurals 1, 2, 3; Science Club 2; F.H.A. 2; Tri-Hi-Y 1, 2, 3, 4; Scorekeeper 2; Majorette 1, 2, 3; Glee Club 4; Library Assistant 2; Tennis 3, 4; Girl Scouts 1, 2, 3.

Ronald Gray Transou

Football 2, 3, 4, Tri-Captain 4; Basketball 3, 4; Baseball 2, 3, 4; Track 2, 3, 4; Junior Varsity Football 1, 2; Monogram Club 1; Hi-Y Club 3; Leaders' Club 2; Glee Club 2; Spanish Club 1; Superlative 4.

James Alvin Uldrick

Intramurals 1, 2; Baseball 2, 3, 4; Science Club 2, 3, President 3; Spanish Club 3; Monogram Club 3, 4; Junior Varsity Football 1; Junior Varsity Basketball 3; Band 1; Hi-Y 2, 3; THE ELK ANTLER Staff 2, 4.

Charles Jackson Wampler

Science Club 1, 2, 3; Beta Club 3, 4; Spanish Club 3, 4; Glee Club 4; Intramurals 1.

Jerry Ann Weatherman

F.S.A. 1; D.E. Club 4; Intramurals 2, 3.

Johnny Burton Welborn

Baseball 3; D.O. Club 4; Glee Club 3; Intramurals 2, 3.

Jerry Elden Wilmoth

Baseball 2; D.O. Club 3, 4; Glee Club 3; Intramurals 2, 3.

Carol Ann Yarboro

Intramurals 1, 2, 3; Cheerleader 1, 2; Glee Club 3; F.S.A. 3; D.O. Club 4, Secretary 4, Reporter 4.

Senior Statistics

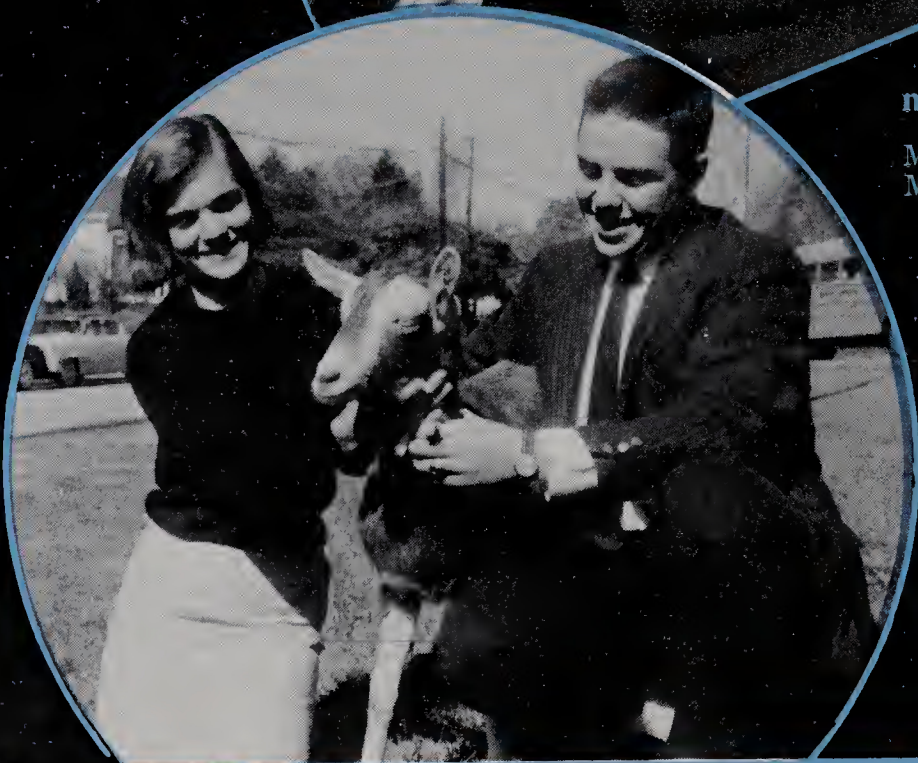


most attractive

Miss Wanda Blevins
Mr. Lanny Johnson

most likely to succeed

Miss Ellen Cooke
Mr. Bobby Lankford



wittiest

Miss Patricia Allen
Mr. Allen Laxton

.....who's



best sport

Miss Savanna Carrico
Mr. Dickie Evans

most popular

Miss Mary Anne Johnson
Mr. Norman Graham



most intelligent

Miss Kay Long
Mr. Wesley Smitherman



who.....

best personality

Miss Mary Armfield
Mr. George Hart



most athletic

Miss Mary Lou Meed
Mr. Ronnie Transou



class officers

President.....Ronnie Hooper
Vice-President.....Coney Gentry
Secretary.....Janet Burcham
Treasurer.....Barry Fox

Nancy Baker

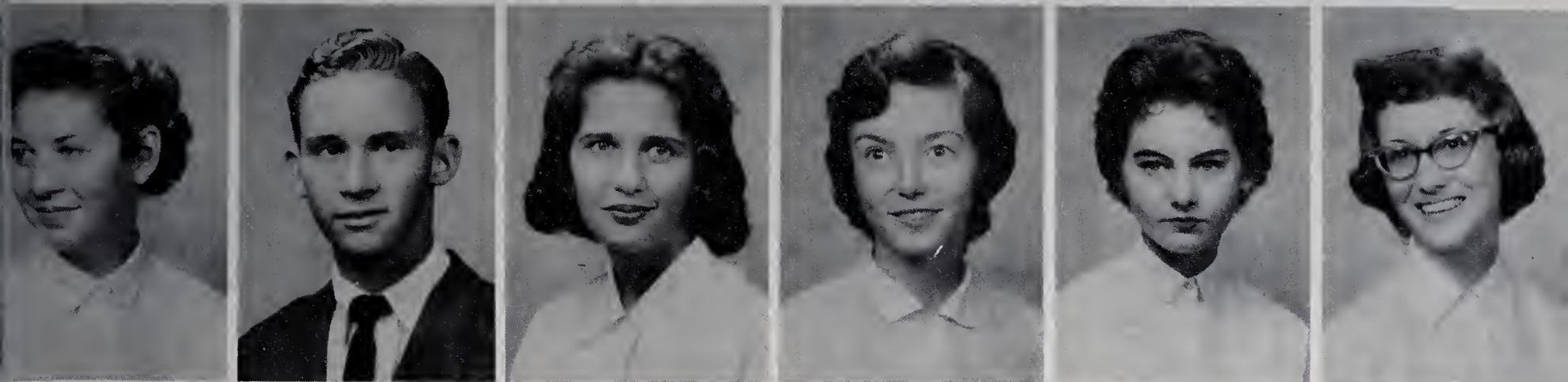
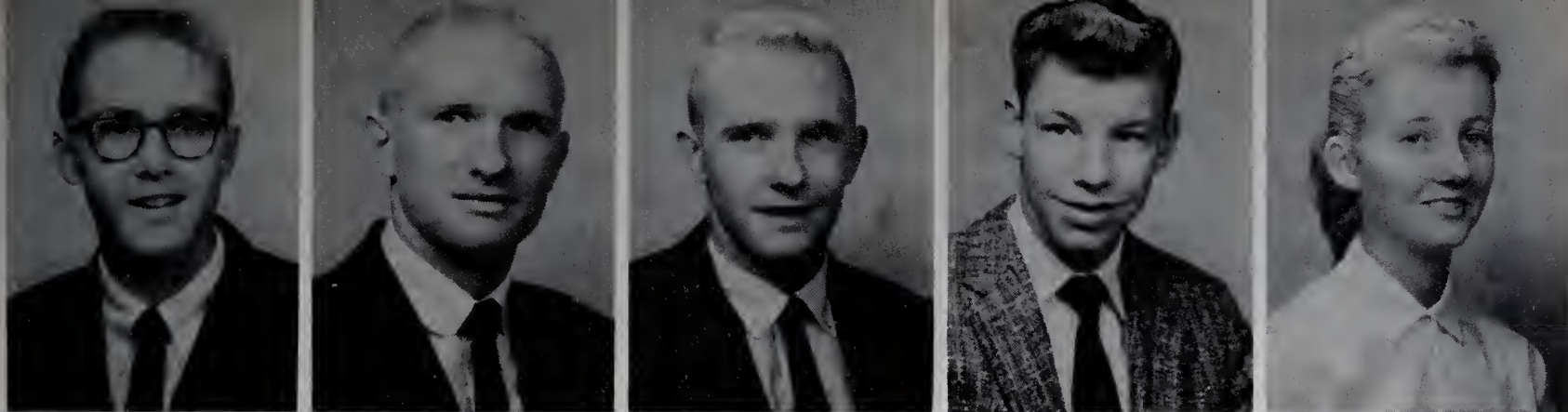
Nancy Baldwin

Clyde Ball

Jackie Bates

David Balzer

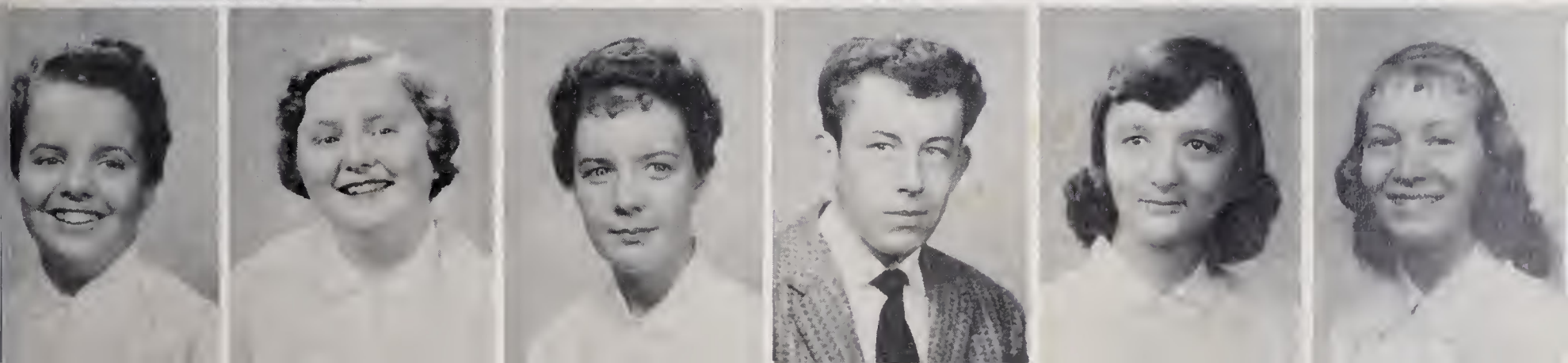
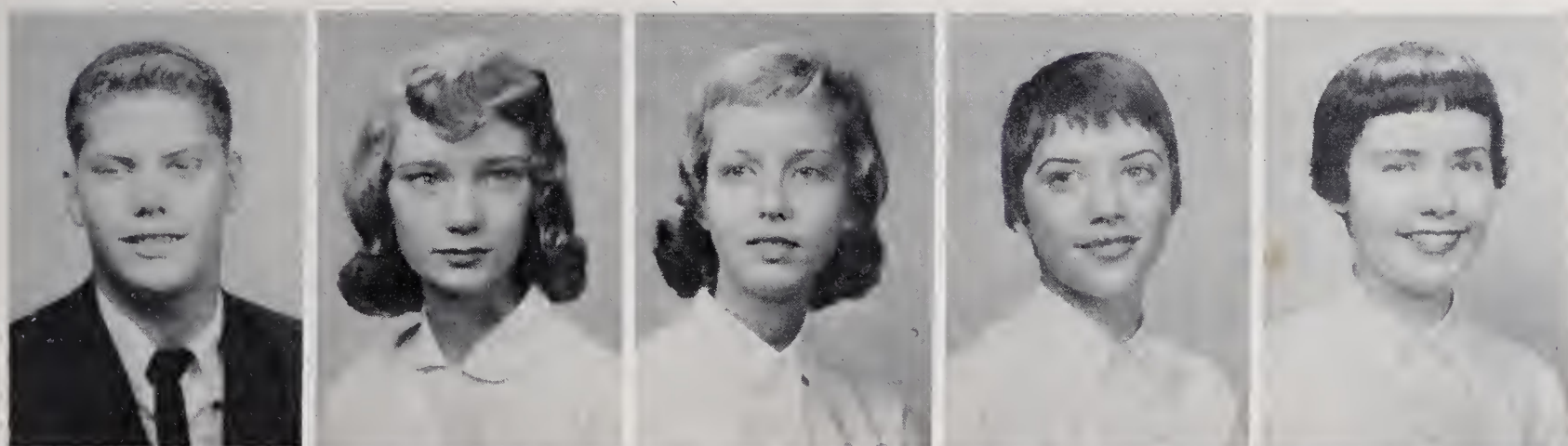




Sandy Biggs, Johnny Blackburn, Kenneth Blackburn, Steve Blackburn, Betty Ruth Brown, Janet Burcham, Garvey Burchette, Lois Burchette, Toby Lee Butner, Mary Jane Carter, Clara Belle Causey.

.....*juniors*.....

Gordon Chatham, Dot Chipman, Barbara Cockerham, Cathy Cockerham, Linda Cockerham, Sharon Cockerham, Mary Lib Collins, Nancy Carol Collins, Kenneth Couch, Mary Ellen Crater, Sharron Crummer.

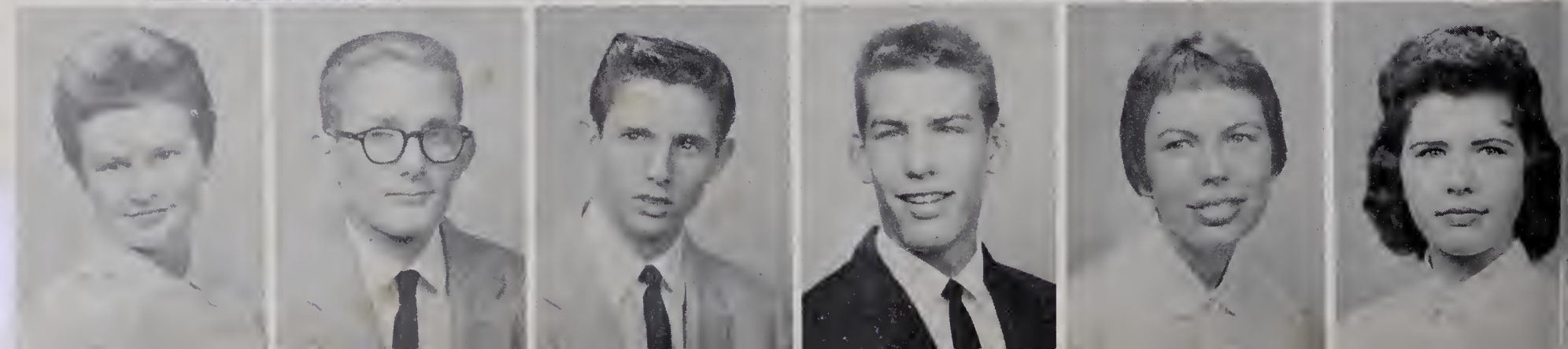


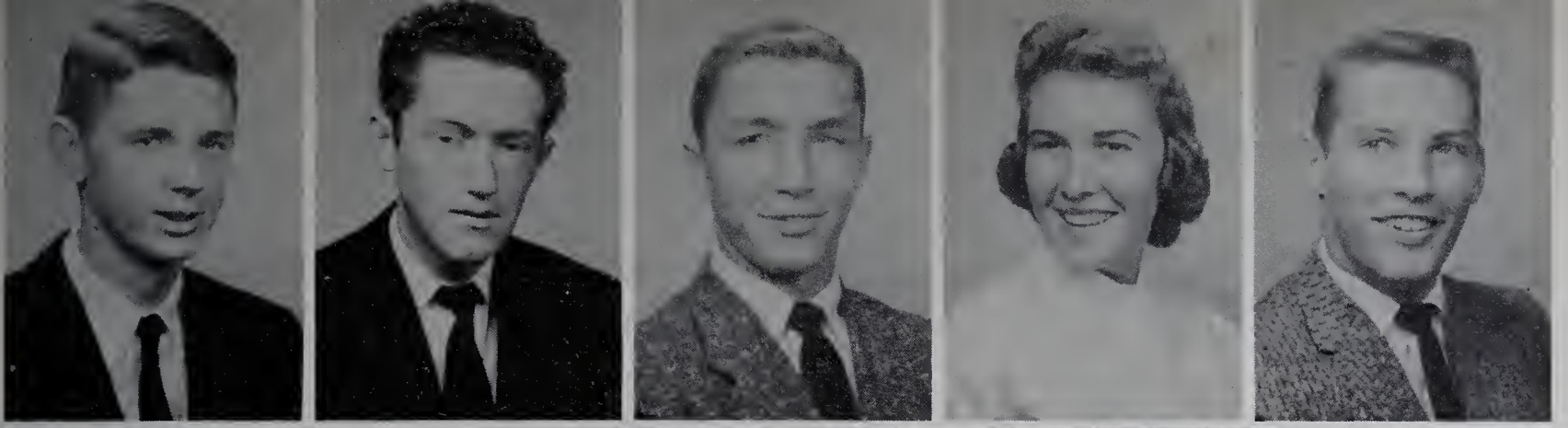


Carl Darnell, Tommy Davis, Kent Eidson, Billie Jean Elderton, Butch Eller, Sally Evans, J. W. Foreman, Jr., Barry Fox, Jane Franklin, Becky Freeman, Jane Gambill.

.....juniors.....

Coney Gentry, Rebekah Gentry, Sudie Gentry, Trent Gilmore, Bud Hall, Frances Hanks, Ben Harding, Gene Harris, Ricky Harris, Lind Howland, Pat Hayes.

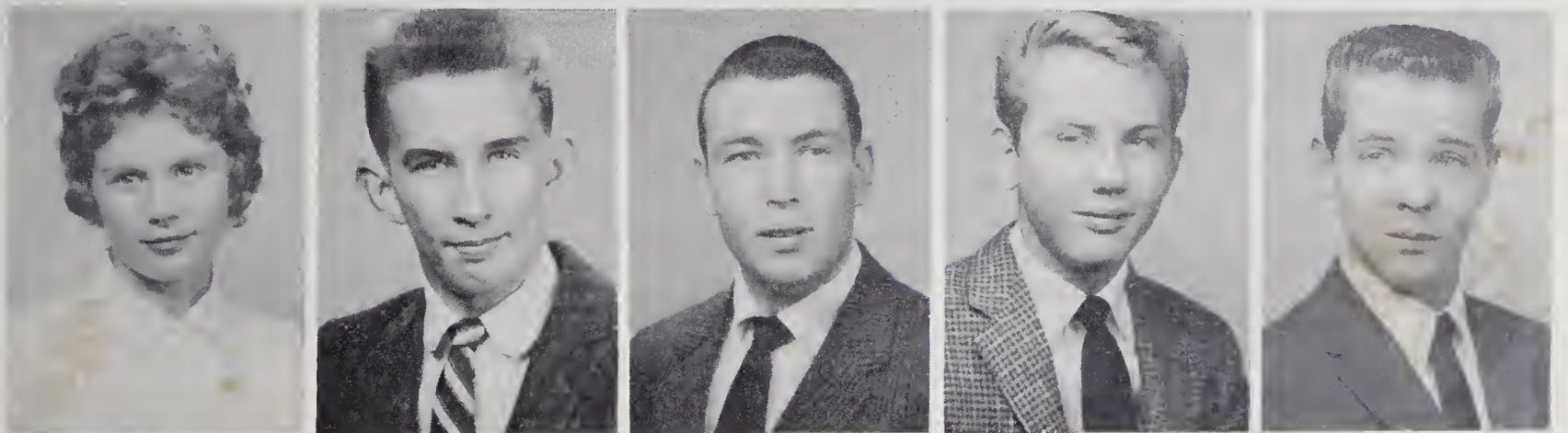




Rick Henderson, Johnnie Holbrook, Danny Holcomb, Eileen Holcomb, Ronnie Hooper, Evelyn Hudspeth, Peggy Johnson, Lorene Key, Michael Lawrence, Claudia Layell, David Layell.

.....juniors.....

Peggy Macemore, Buck Martin, Kenneth Martin, Eddie Mastin, Larry Mastin, Geneva McCain, Judy McCain, Jimmie Ann Miller, Louise Moncus, Dallas Nance, Yvonne Norman.

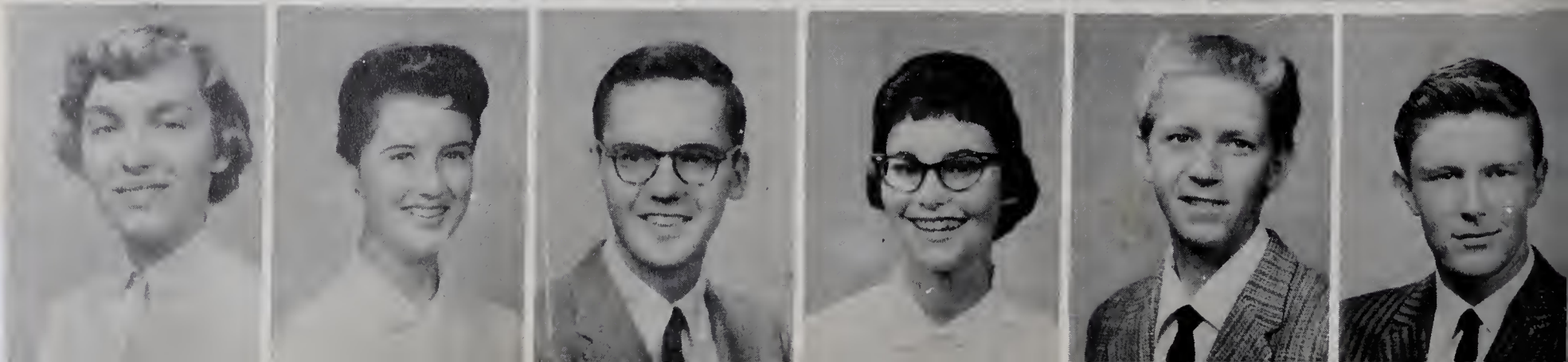




Brenda Park, Jerry Park, Linda Parker, Curly Payne, Martha Pearson, Mike Phillips, Janet Poplin, Bertha Pruitt, Marcella Sears, Jo Ann Sexton, Bonnie Shepherd.

.....juniors.....

Lynn Shepherd, Bonnie Shore, Sara Stockton, Clara Stone, Pam Thomas, Janet Vestal, Frances Walker, Billy Waring, Linda Wiles, Wayne Wilmoth, Charles York.





Sandy Biggs



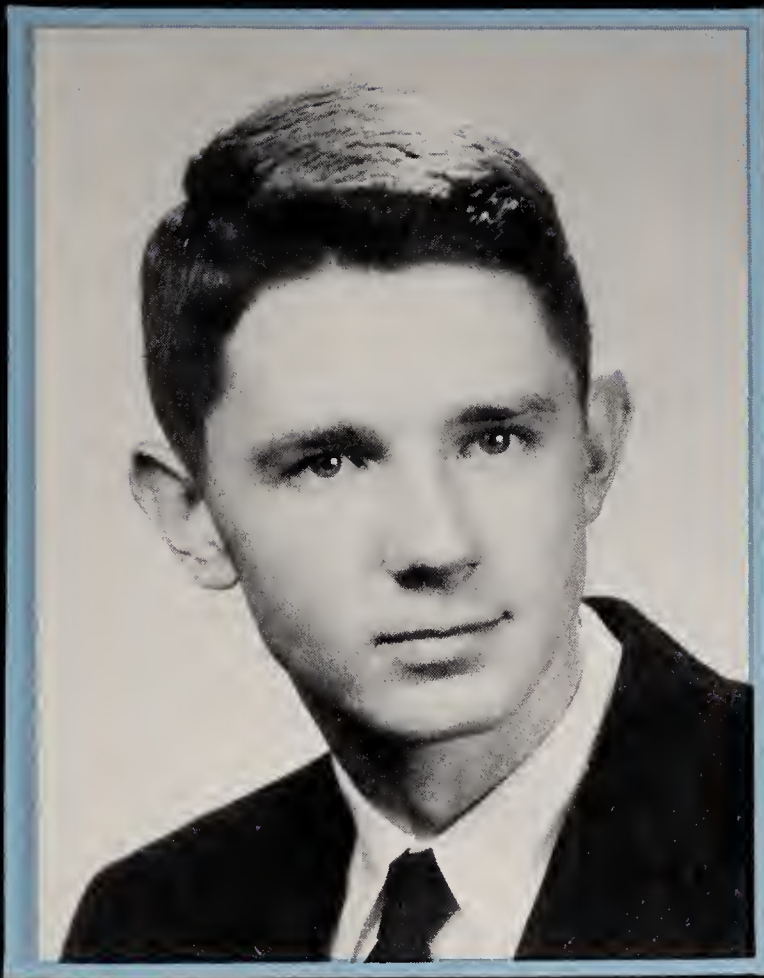
Janet Burcham



Toby Butner



Clara Belle Causey



Rick Henderson
Chief

.....
j
u
n
i
o
r
.....

.....
m
a
r
s
h
a
l
s
.....



Linda Cockerham



Kent Eidson



Sara Stockton



Bill Waring



sophomore class officers

President .. Harry Jennings

Vice-
President .. Steve Holloway

Secretary Joe Newman

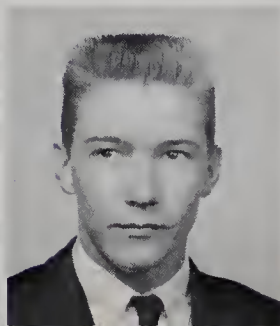
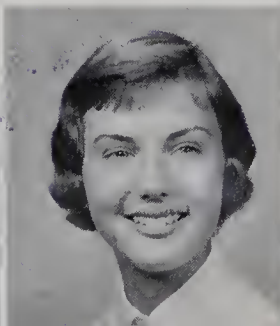
Treasurer Sam McCain

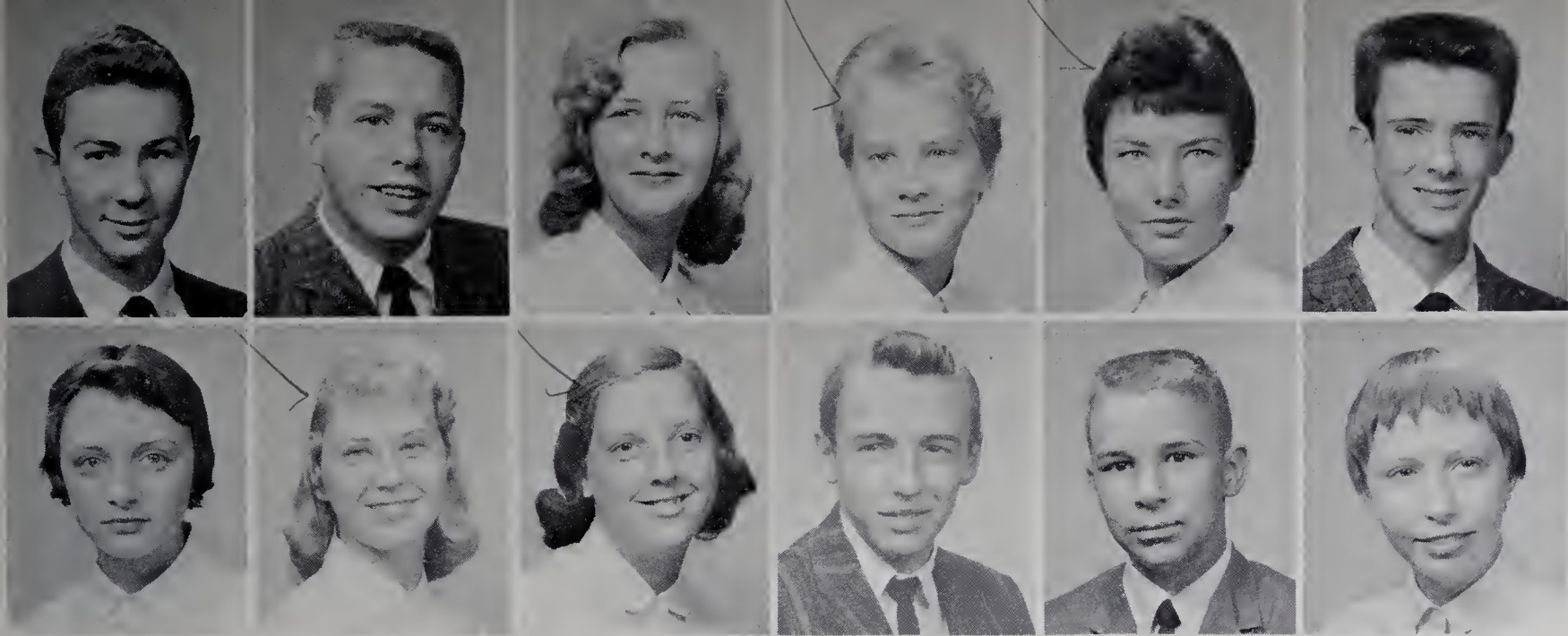


Alta Barker

Molly Barker

David Billings

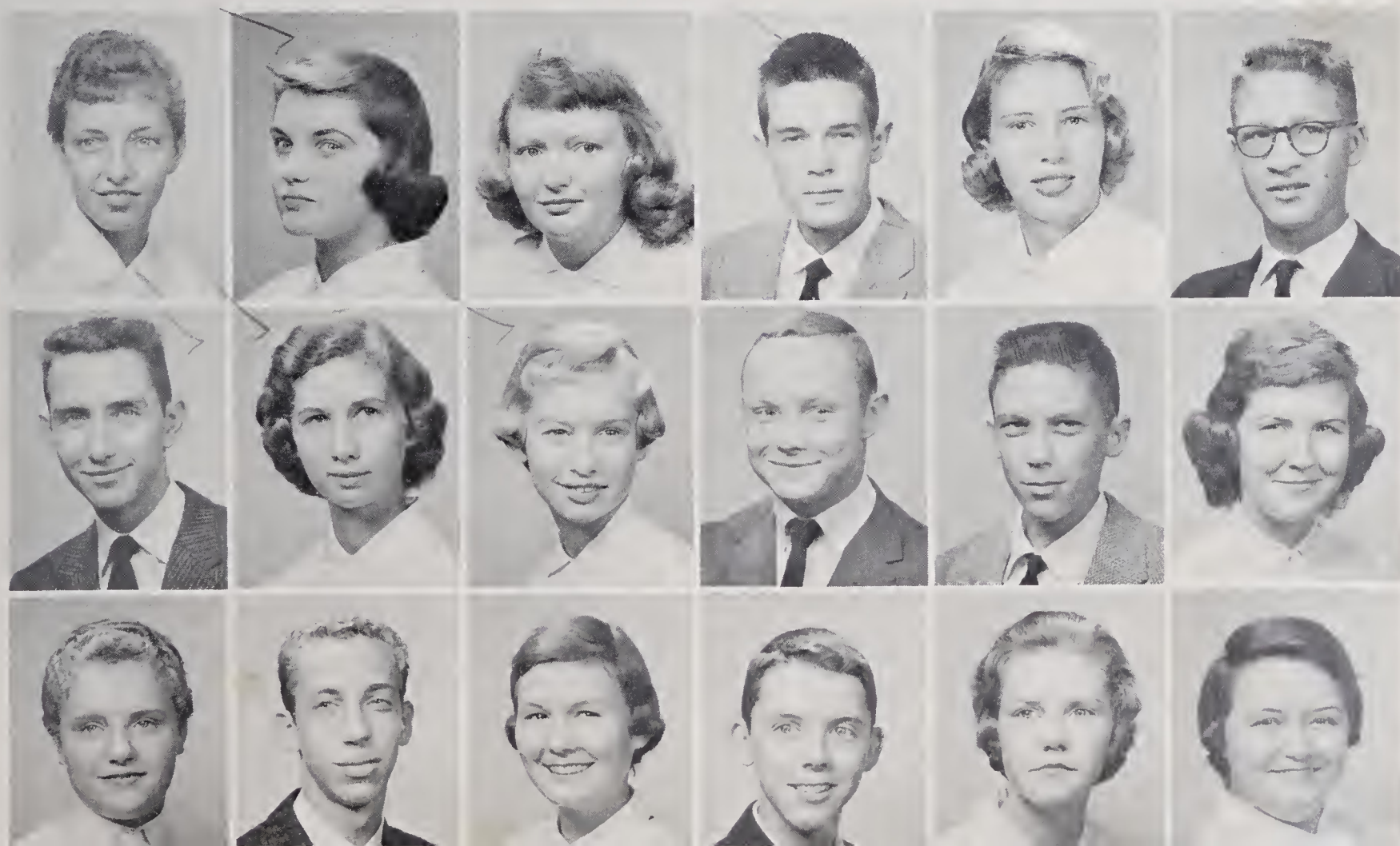


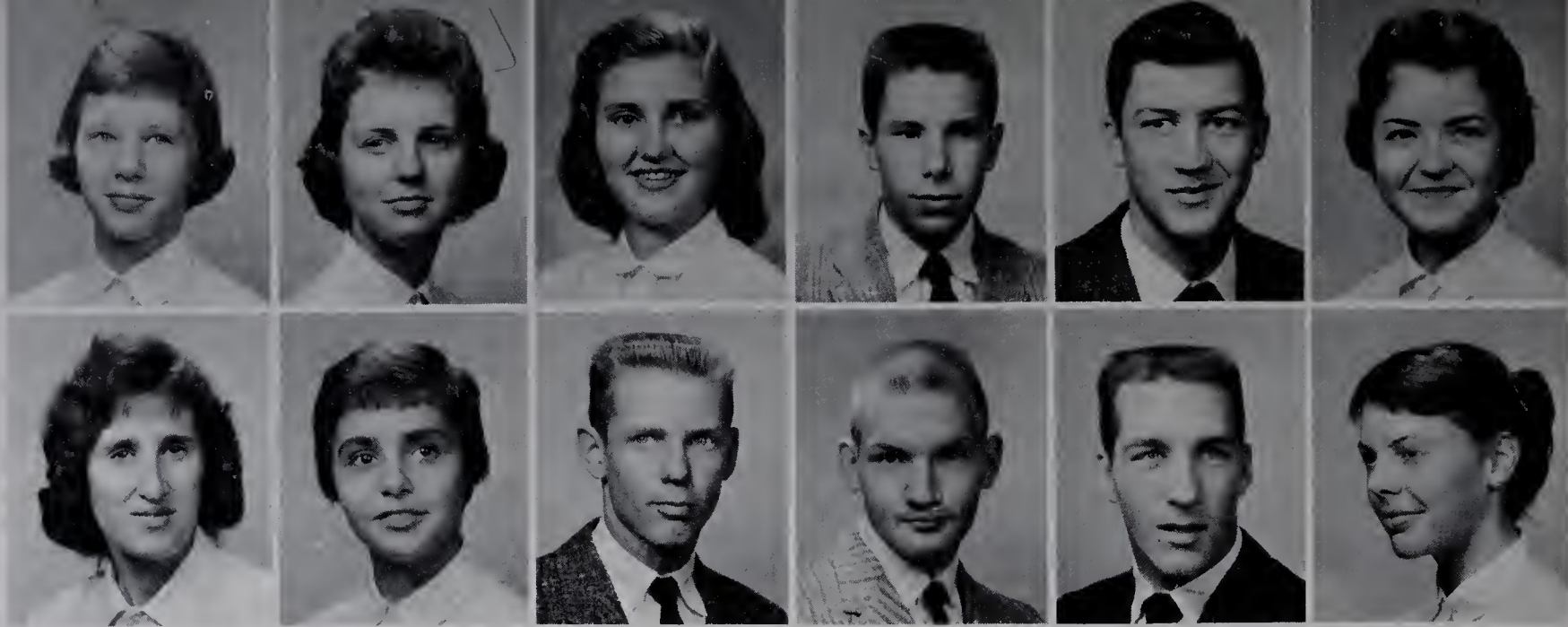


Row 1: Joe Bivins, Jerry Blackburn, Joan Greenwood Brinegar, Rita Brinegar, Shirley Brian, Maurice Bumgarner. Row 2: Alice Calhoun, Carol Rheinhardt Calhoun, Linda Carlton, Michael Carroll, George Carson, Ann Carter.

.....sophomores.....

Row 1: Geraldine Carter, Hilda Gay Carter, Nora Cave, Tommy Chipman, Jane Cranford, Arthur Crummer. Row 2: Frank Curtis, Jr., Carol Darnell, Patsy Darnell, Robert Dillon, Johnny Dockery, Betsy Eldridge. Row 3: Helen Felts, Johnny Ford, Jo Ann Foster, Steve Freeman, Patsy Gilliam, Margaret Gregory.





Row 1: Carolyn Hampton, Alma Harmon, Judy Harris, Reggie Harris, Seth Harris, Annette Hayes. Row 2: Gay Hemric, Jo Herring, Ray Hinson, Jerrell Holloway, Steve Holloway, Anne Howland.

.....sophomores.....

Row 1: Andrew Jackson, Penny Jackson, Gary Jennings, Harry Jennings, Vivian Johnston, Dale Jordan. Row 2: Barry Lankford, Ronnie Long, Pat Lyon, Sam McCain, Sara Mathis, Stephen Martin. Row 3: Walter Metz, Jr., Joe Newman, Martha Pardue, Gabrielle Park, Sue Ann Pennell, Billy Phillips.





Row 1: Edgar Royall, Winnie Sue Royall, Ann Sagar, Gary Salley, Linda Scott, Anita Shore. Row 2: Betty Ann Sloop, Katie Spann, Margaret Sparks, Betty Sprinkle, Steve Sprinkle, Larry Stewart.

.....sophomores.....

Row 1: Pike Sullivan, Erwin Swaim, Susan Taylor, Genevieve Teague, Constance Triplette, Floyd Van Antwerp. Row 2: Carolyn Walters, Ann Wampler, Betty Jane Weaver, Willie Mae Welborn, Larry West, O. W. White, Jr. Row 3: Patsy White, Junior Wilmoth, Betty Windsor, Jerry Wood, Joe Wood, Carole Wright.





freshman class officers

President . . Jerry Blackburn
Vice-President,
Harold Weatherman
Secretary . . . Bill Blackburn
Treasurer, Dwayne Hampton

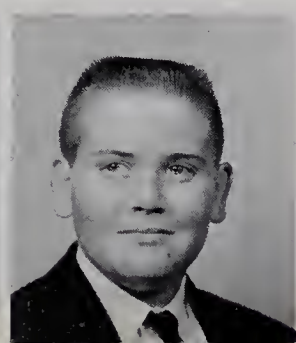


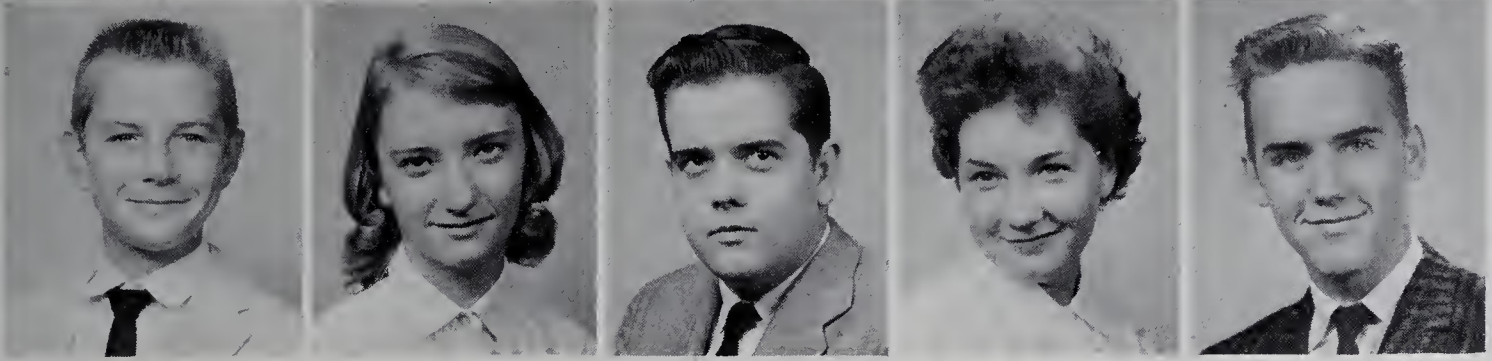
Judy Adams

Pat Adams

Barbara Anderson

Bill Blackburn

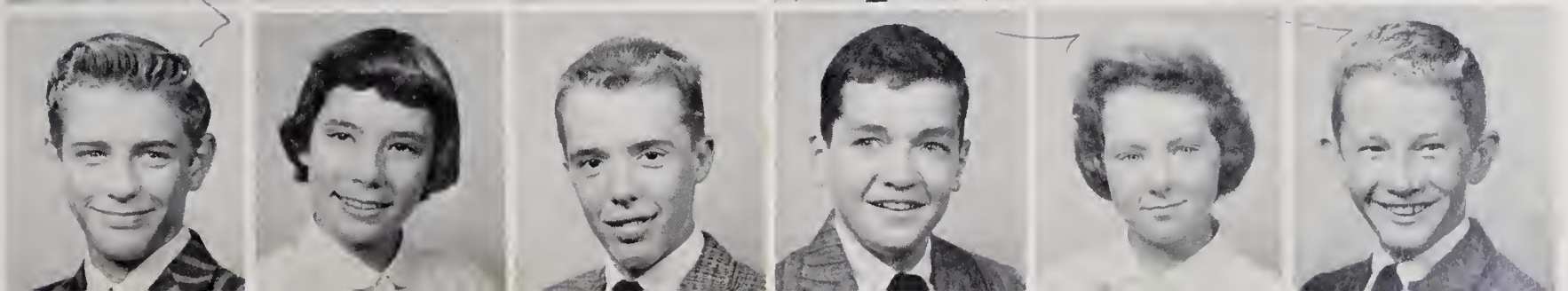
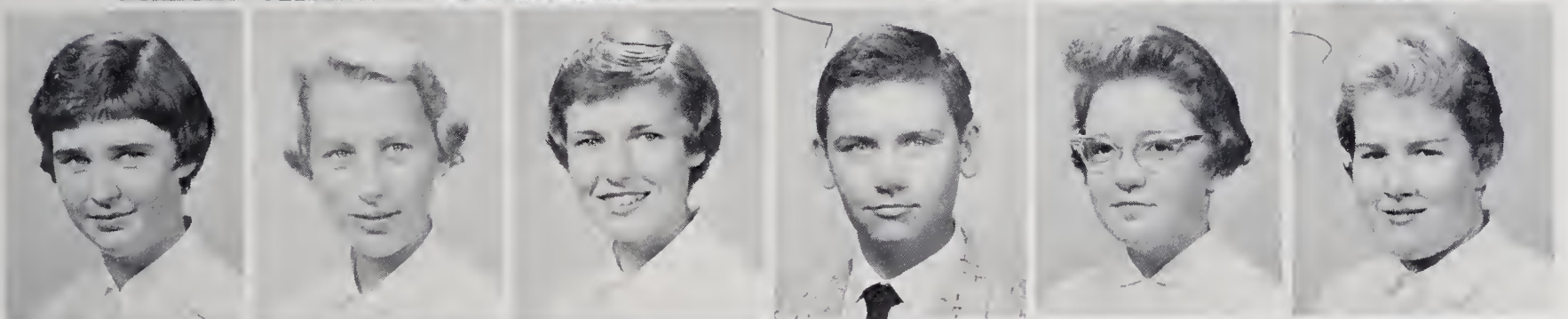


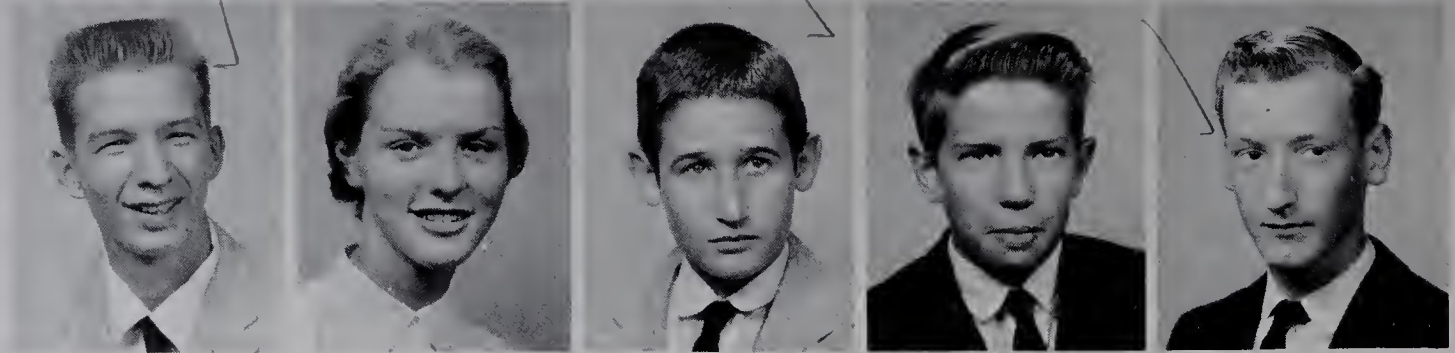
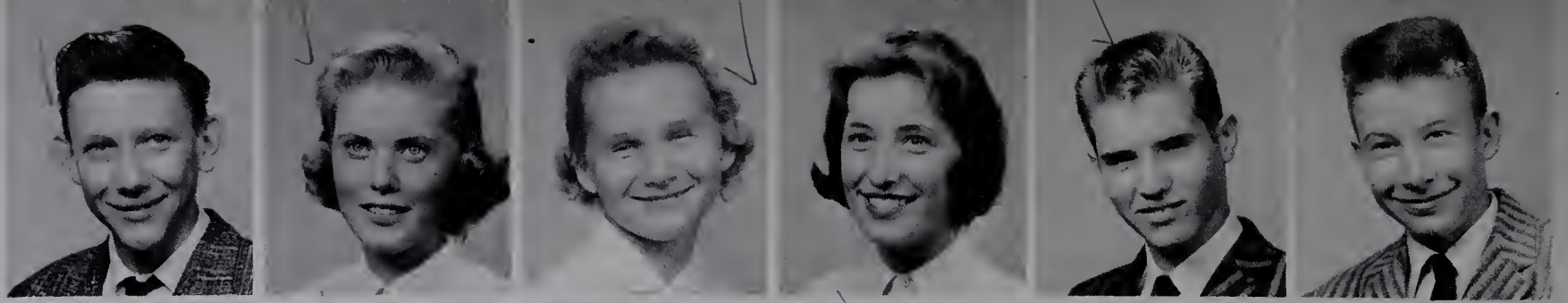


Row 1: Jerry Blackburn, Douglas Brown, Harold Brown, Joe Brown, Johnsy Brown, Terry Byrd. Row 2: Dan Calhoun, Kay Caudle, Larry Caudle, Lola Chipman, Miles Church.

.....freshmen.....

Row 1: Ira Cockerham, Richard Cockerham, Katie Collins, Patty Cummings, Rex Darnell. Row 2: Sara Davis, Ann Day, Susan Day, Eddie Deatherage, Caroline Dillon, Polly Eller. Row 3: Wayne Foreman, Mary Alice Fox, Eric Freed, Hack Frye, Bonnie Gambill, Charles Gentry.

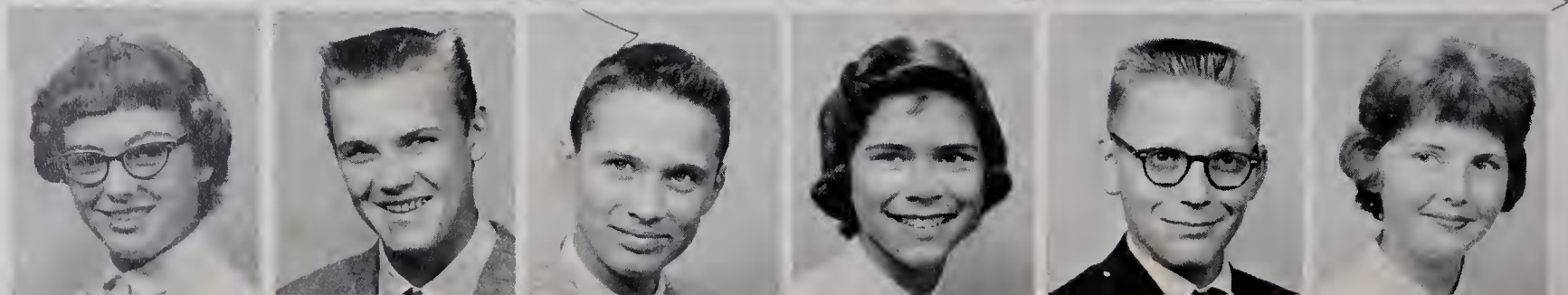
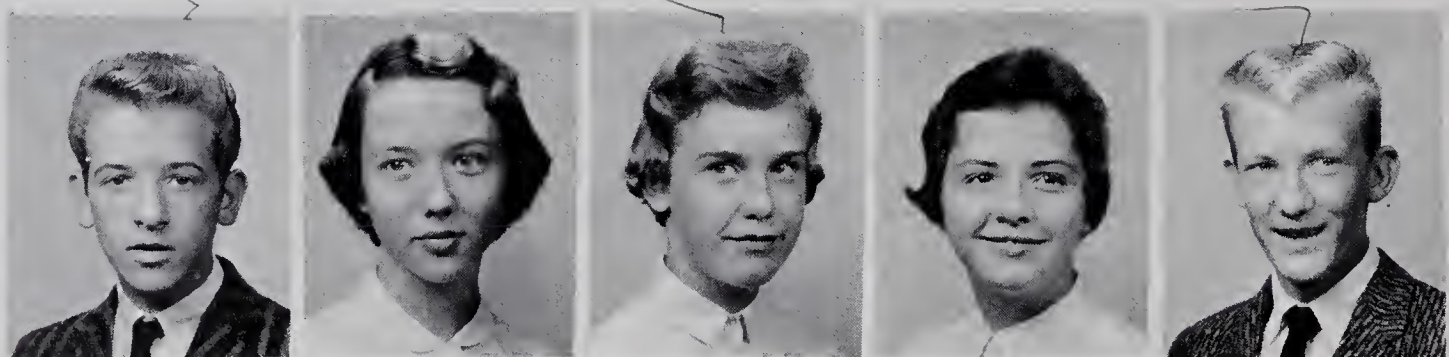


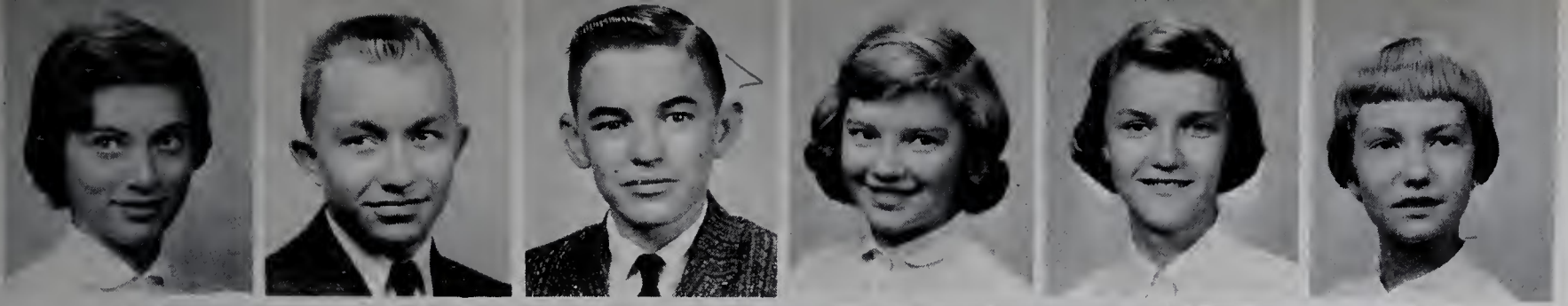


Row 1: Dalin Gentry, Sharon Gentry, Judy Gilmore, Patsy Griggs, Johnny Guyer, Dwayne Hampton. Row 2: David Harris, Meg Harris, Tommy Hemric, Tommy Higgins, Norris Holbrook.

.....freshmen.....

Row 1: Ronnie Holbrook, Brenda Key, Linda Lanning, Pat Long, Ray McCain. Row 2: Freddie Mastin, Phyllis Mauldin, Jeanette Mitchell, Nancy Mounce, Elizabeth Nance, Melba Nance. Row 3: Miriam Nicks, Clayton Pardue, Kenneth Pardue, Ann Plaster, Jimmy Poplin, Nancy Poteat.

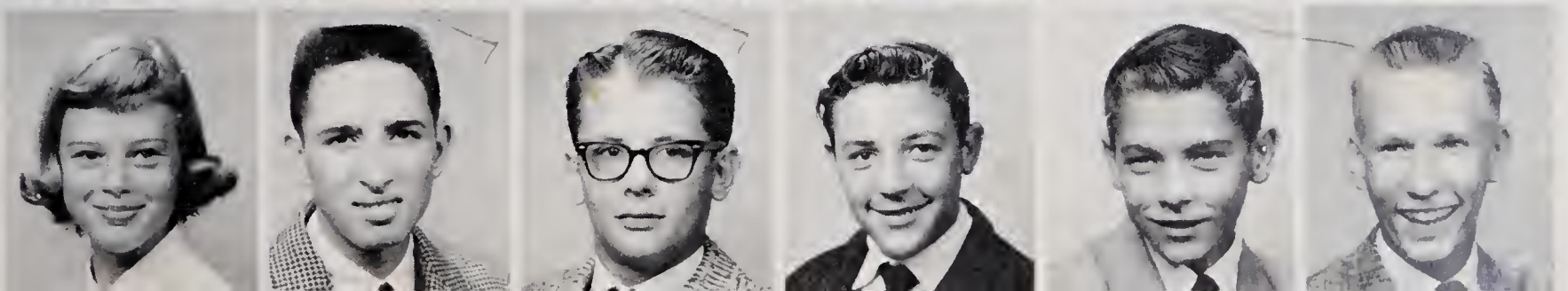
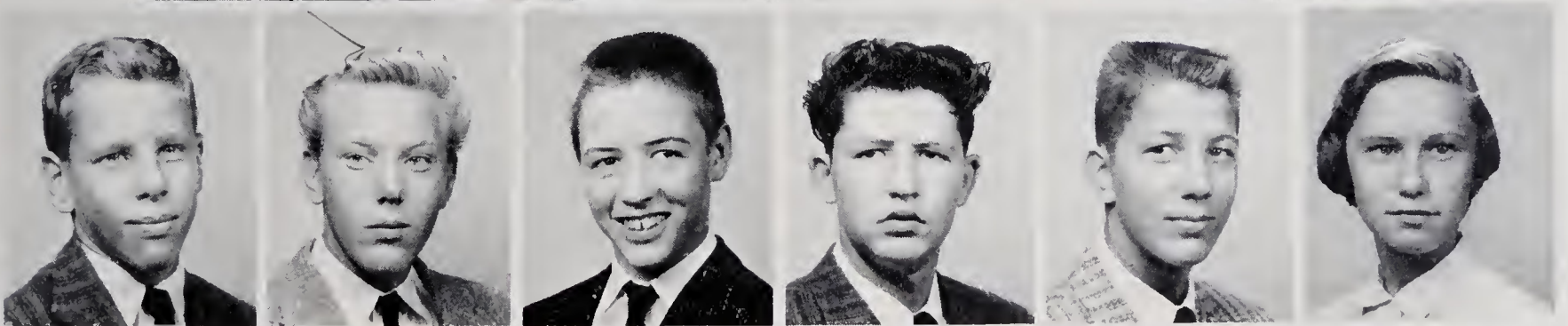
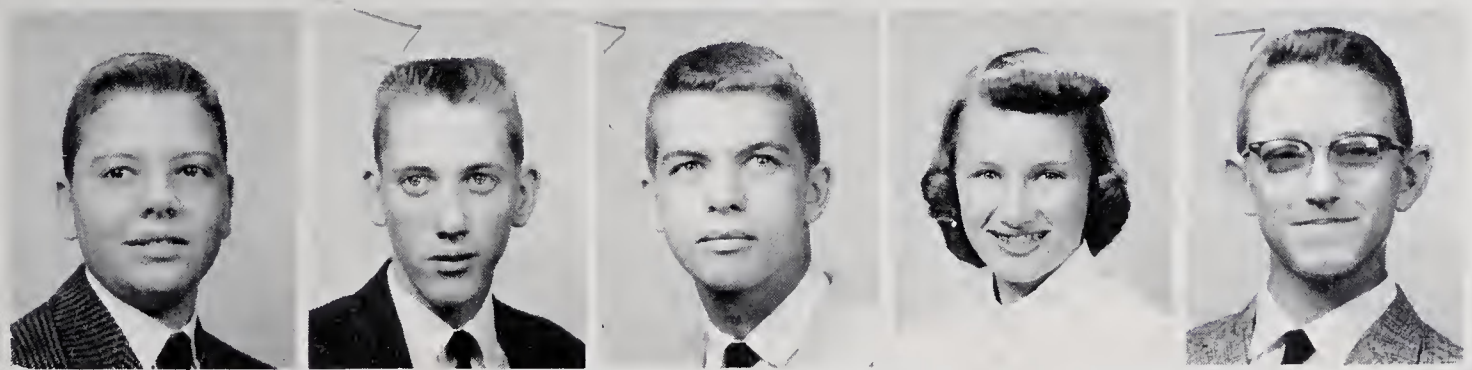




Row 1: Margaret Price, Jimmie Rainey Dean Reynolds, Patsy Rhymer, Kathy Rhyne, Sandra Sale. Row 2: Eddie Salley, Johnny Settle, Jane Shepherd, Barbara Silverman, Larry Slaughter.

.....freshmen.....

Row 1: Eddie Snow, Ronnie Spann, Gary Stevenson, Betty Swaim, Billy Taylor. Row 2: Bill Thompson, Douglas Tilley, Gary Vestal, Dickie Walters, Harold Weatherman, Donna Wheeler. Row 3: Nancy White, Eddie Wiles, Jimmy Willey, Lucky Wilmoth, Jackie Wood, Seth Wooten.



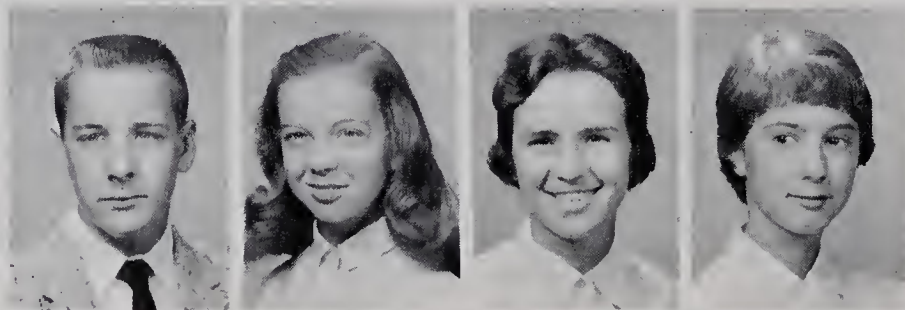


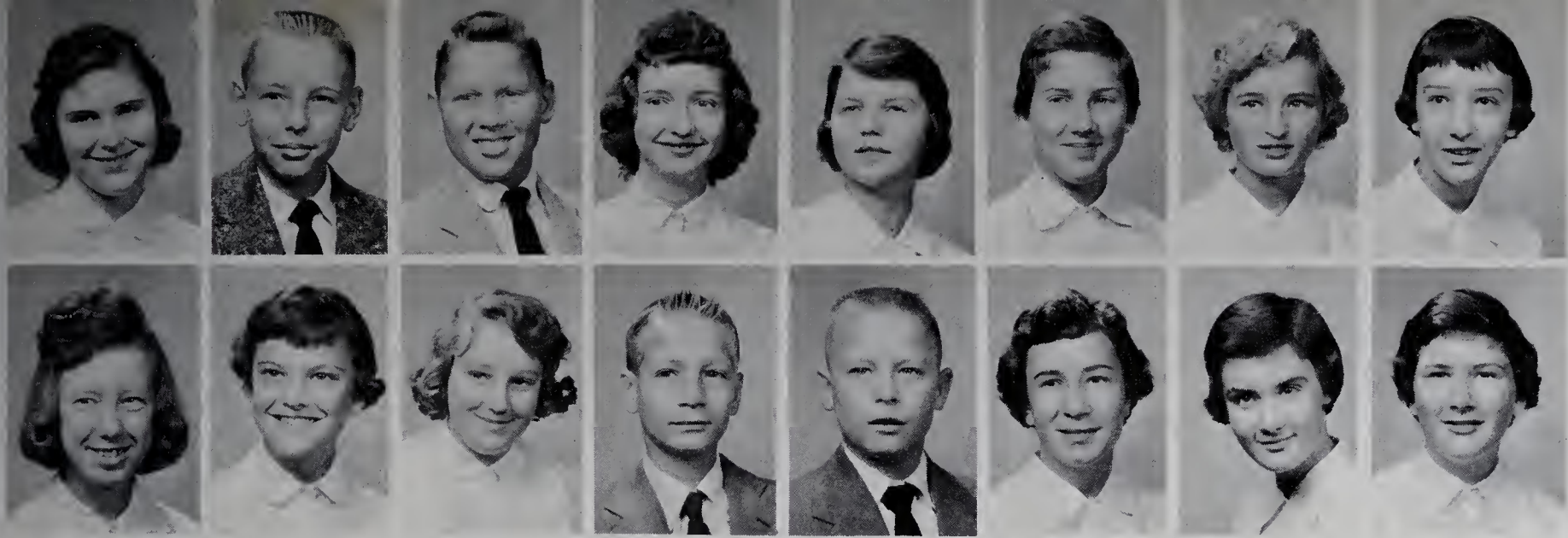
eighth grade officers

President Bob Metz
Vice-
President ... Judy Ratledge
Secretary ... Charles Myers
Treasurer Mark Green



Row 1: Gale Adams, Hilda Atkins, Wilda Jean Baldwin, Peggy Bivins. Row 2: Wilda Blevins, David Brown, Danny Burchette, June Carol Byrd, Lois Byrd.

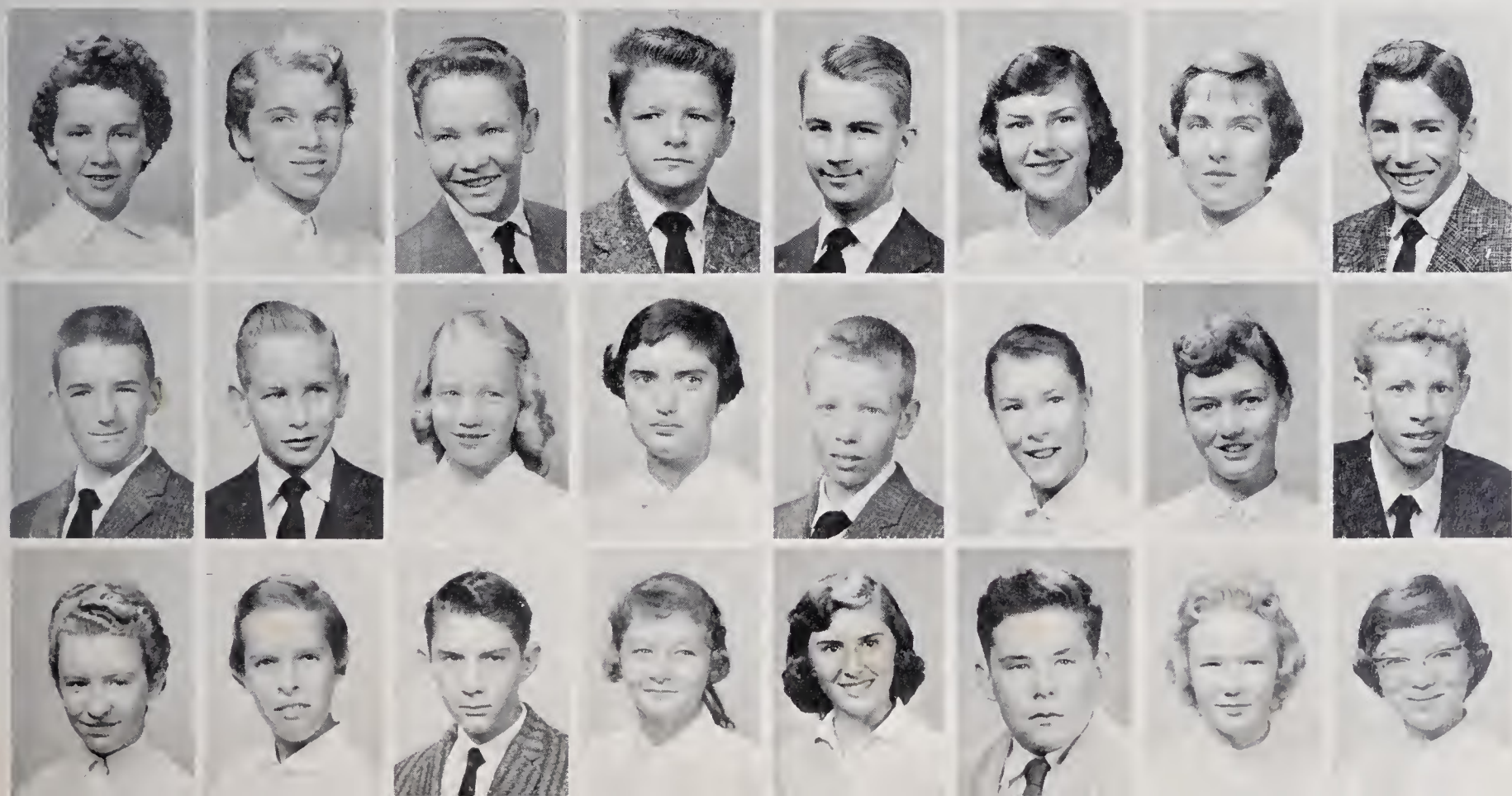




Row 1: Judy Calloway, Clyde Carroll, Bobby Carter, Jerry Carter, Judy Carter, Linda Carter, Shirley Carter, Sandra Caudle. Row 2: Wanda Cleary, Carol Jeanne Cooke, Joyce Corder, Sammy Crummer, Tony Darnell, Barbara Dixon, Nancy Dobbins, Judy Dockery.

.....eighth grade.....

Row 1: Florence Eller, Virginia Ford, Coleman Francis, Jimmy Gaither, Junior Gentry, Kathy Gilliam, Glenetta Graham, Mark Greene. Row 2: Bobby Griffin, Sammy Hall, Rebecca Harpe, Abbie Harris, Gary Harris, Helen Harris, Rita Harris, Roger Harris. Row 3: Ann Hayes, Elizabeth Ann Hayes, Charlie Hemric, Anne Henderson, Toni Jolley, Johnny Kennedy, Beverly Lawrence, Ann McNeill.





Row 1: Martha Mann, Connie Martin, Phillip Martin, Ellen Meed, Bob Metz, Vicki Miller, Earl Mounce, Faye Mounce. Row 2: Charles Myers, Cynthia Nelson, Bobby Newman, Elmer Newman, Jeff Page, Frances Park, Lois Park, Anna Poplin.

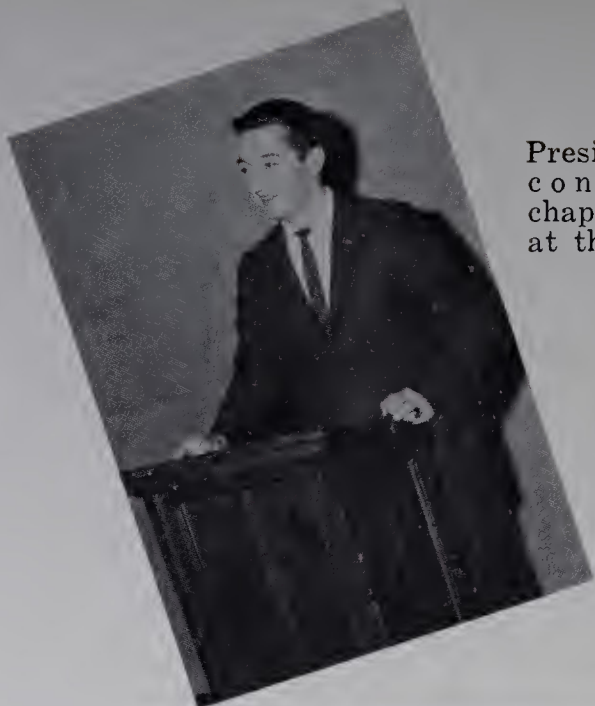
.....eighth grade.....

Row 1: Sam Poplin, Judy Ratledge, Carol Salmons, Sheila Shores, Brenda Sofley, Carol Stoker, Jimmy Stone, Sue Stone. Row 2: Ronnie Sturgill, Charles Swain, Danny Swaim, Roger Swaim, Marvin Swartzel, Irma Teague, Larry Tilley, Ann Turner. Row 3: Mary Waring, Dale Wiles, Carroll Williams, Jean Wilmoth, Priscilla Wilmoth, Diana Wood, Jeanette Wood, Mickey Yarborough.

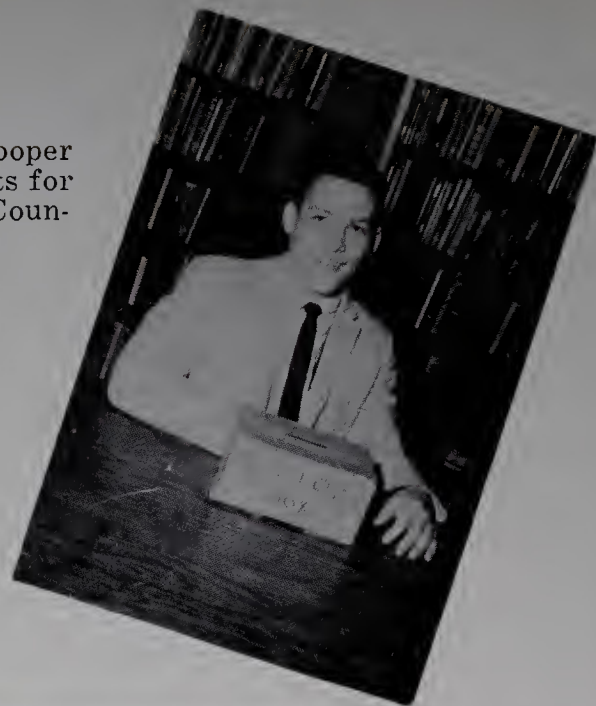




activities



President Norman conducting a chapel program at the gym.



"Veep" Hooper collects ballots for the Student Council election.

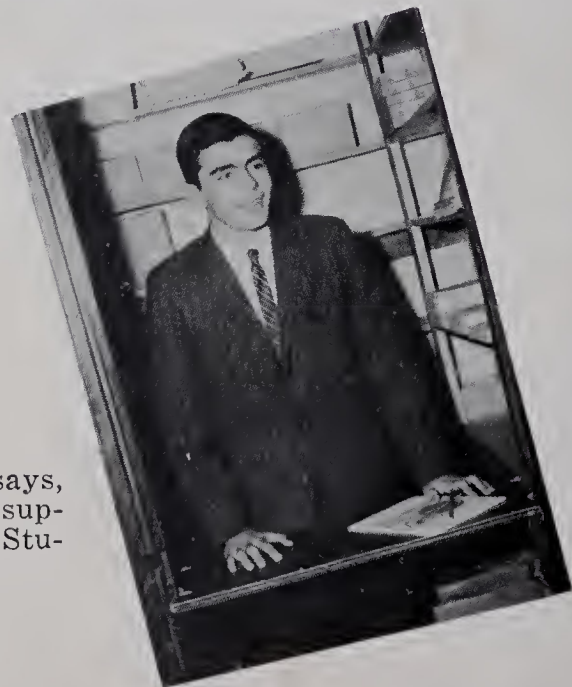
... student council ...



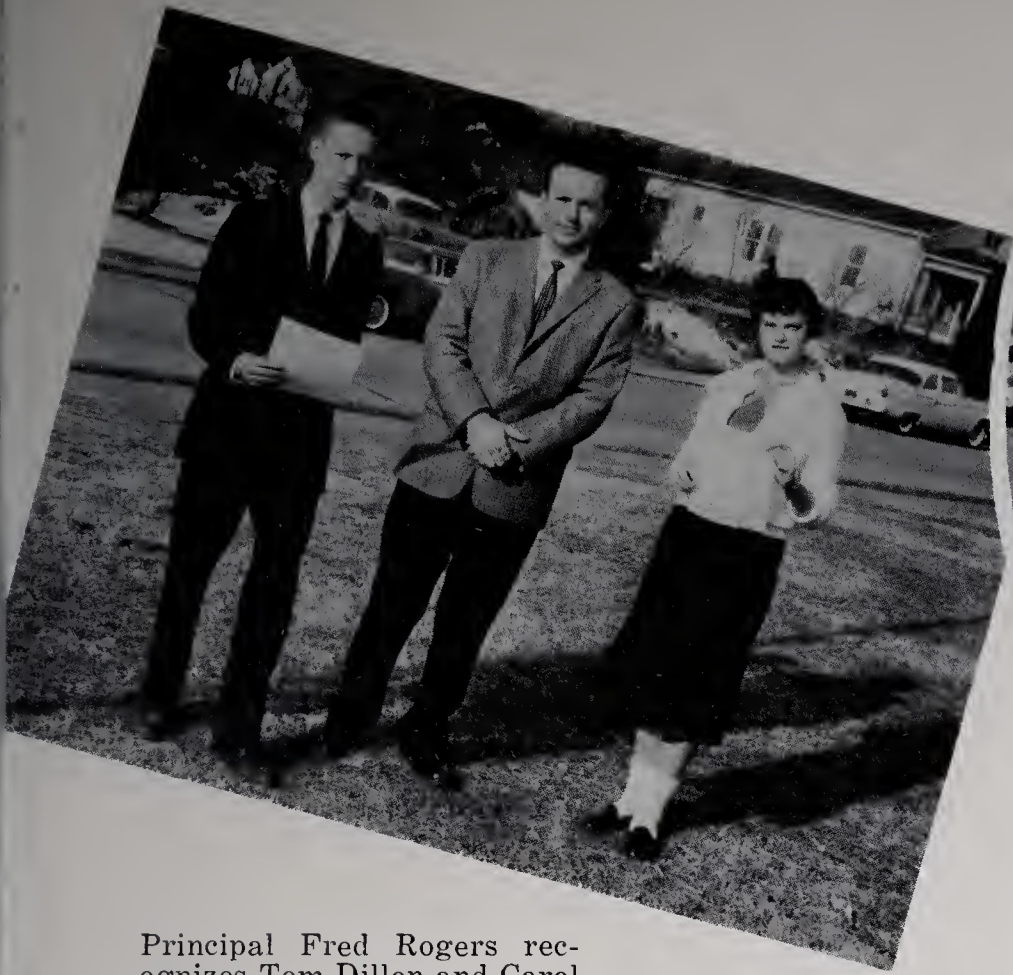
Row One: Swaim, Long, Plaster, Montanari, Blevins, Harris, Poplin.
 Row Two: Mr. Rogers, adviser; Price, Stewart, Burcham, Nance, Dillon, Brown, Henderson, Lankford, parliamentarian (absent when picture was made.)



Mary Anne diligently typing the Student Council bulletins.



Wesley says, "Buy your supplies at the Student Store."



Principal Fred Rogers recognizes Tom Dillon and Carol Jeanne Cooke, winners of the essay contest.



Wallace Byrd, James Chatman and Will Newman, Color Guards, perform at E. H. S.'s first Citizenship Day.

College Day helped serious-minded juniors and seniors to select the college of their choice.





"We Have a Peach of a Team"
Senior Float, First Place



"Our Buckin' Elks Are Itchin'
to Win"
Junior Float, Second Place



"They've got the spirit!"

.....homecoming



"Off to the races!"

Students completed the
annual homecoming



"Elkin's answer to Ra-
dio City fame"





"Our Team's Record Is Mighty Fine"
Sophomore Float



"Worlds of Welcome—Black Hawks"
Freshman Float



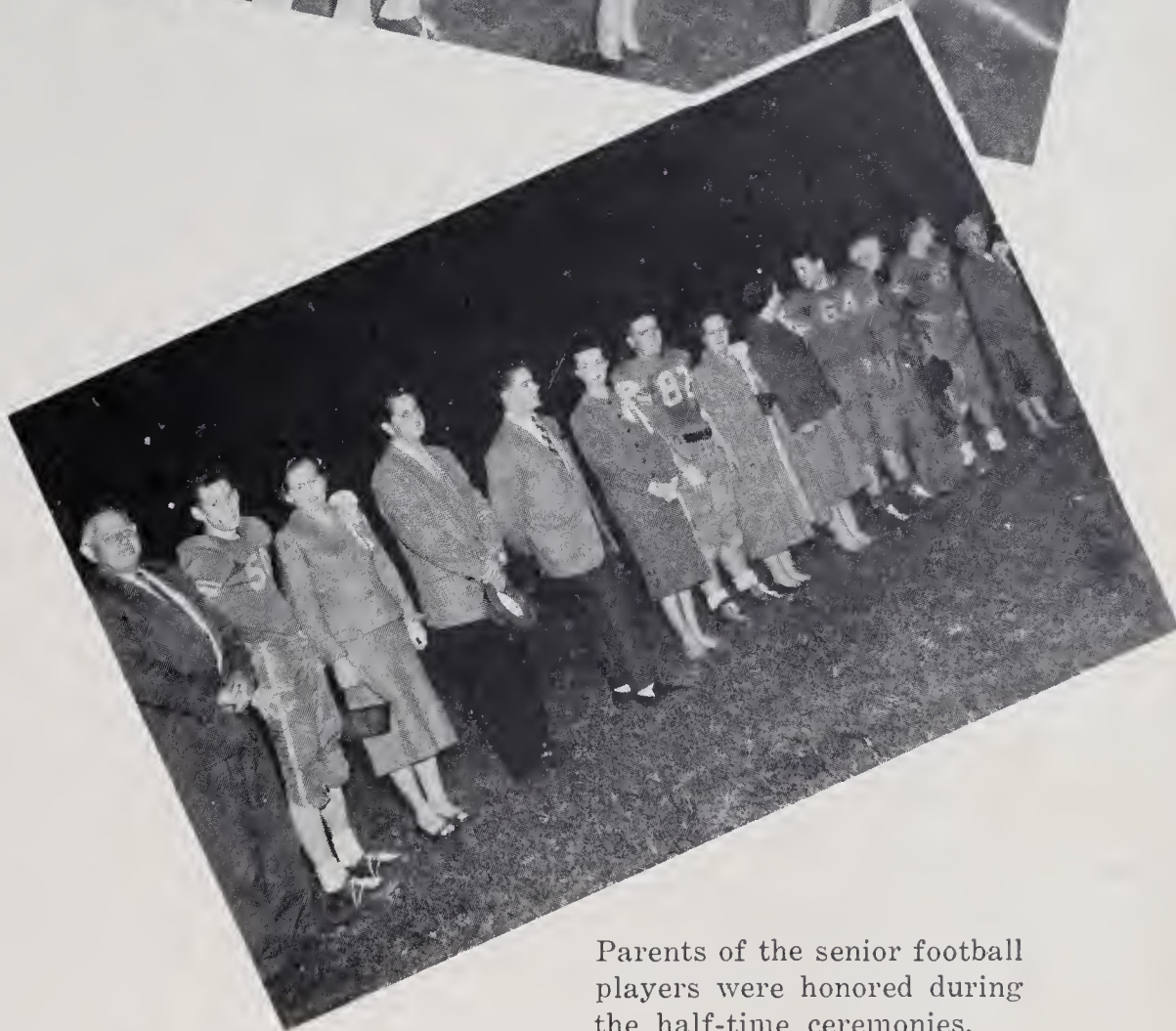
"Moon Bound"
Eighth Grade Flo

Bill, Ronnie, and George crowned Alice Homecoming Queen of '58.



festivities.....

festivities at the 1958 Homecoming Dance.



Parents of the senior football players were honored during the half-time ceremonies.



Miss Jackie Simmons
senior attendant



Miss Sally Evans
junior attendant

Miss Alice Cranford
homecoming queen



.....
q
u
e
e
n
a
n
d
a
t
t
e
n
d
a
n
t
s
.....



Miss Molly Barker
sophomore attendant



Miss Pat Adams
freshman attendant



Miss Carol Salmons
eighth-grade attendant



majorettes: Collins,
Park, Layell; drum
majorette; Holcomb,
Causey

Frances, narrator, help-
ed to make the shows
successful.

Band: Mr. Walker, director; Layell; Hol-
comb; Park; Collins; Causey; Poplin;
Hudspeth; Chipman; Freeman; Cox;
Sagar; Weaver; Dillon; Ford; K. Mar-
tin; P. Martin; Wiles; Prevette; Pow-
ers; Briggs; Yarborough; Bumbarner;
Johnson; Settle; Cockerham; Shore;
Carpenter; Atkinson; Hall; Frye;
Brown; Cooke; Carter



elkin rockettes: Johnson; Herring; Howland; Meed; Hall; A. Cranford, director; J. Cranford; Barker; Foster;
Wright; Allen; Plaster

.....
h
a
l
f
t
i
m
e
s
h
o
w
s
.....





officers
 President
 Wesley Smitherman
 Vice-President
 Bob Lankford
 Secretary
 Mary Anne Johnson
 Treasurer.....Dick Evans
 Chaplain.....Tom Dillon



beta club—Row One: S. Redmon, Freeman, M. Gentry, Simmons, Parrott, J. Redmon, C. Gentry, Holcomb, Shepherd, Poplin, Allen, Johnson, B. Meed, Brown, Causey. Row Two: Miss Sebastian, adviser; Brinegar; Wampler, M. Meed, Thompson; Sears; Franklin; Long; Stockton; S. Gentry; Cockerham. Row Three: Montanari, Martin, Hooper, Butner, Graham, Cranford, Burcham, R. Gentry. Row Four: L. Edison, J. Martin, Harding, Pardue, K. Eidson, Cooke, Rhyne, Thomas, Biggs, Ball, Hampton.



officers
 President.....George Hart
 Vice-President....Garland Pardue
 Secretary-Treasurer, Jane Franklin
 Chaplain.....Tom Dillon
 Sergeant-at-Arms
 Wesley Smitherman

monogram club

Overcash, K. Eidson, Osborne, Biggs, Hooper, Laxton, Rhyne, Gregory, Harris, Nance, L. Johnson, Dillon, Gentry, Carson, Eller, Hayes, Elderton, Collins, M. Johnson, Park, Newman, Burcham, L. Eidson, Carrico, Layell, Meed, Causey, Graham, Holloway, Smitherman, Hall, Mr. Grissom, adviser.





distributive education

Row One: Mastin, editor—promotion manager; Weatherman, chaplain; Day, treasurer; Gentry, secretary; Simmons, vice-president; Gaither, president;
Row Two: Carter, Key, Sparks, N. Adams, Norman, Blackburn, B. Adams;
Row Three: Gentry, Couch, Felts, Jackson, Sloop, Holbrook, Francis, Wilmoth, Layell

Row One: Rhyne, president; Sloop, vice-president; Yarboro, secretary; P. Byrd, treasurer; Chatman, chaplain. **Row Two:** T. Couch, Guyer, Holbrook, Caudle, Welborn, Harris, D. Couch, Bengé, Beulin. **Row Three:** Mr. Eldridge, adviser; W. Byrd, Newman, Foreman, Darnell, Phillips, Wilmoth, Adams

diversified occupations





library assistants

Row One: Layell; Carlton; Shepherd; Miss Sebastian, adviser; Collins; S. Redmon; Carter; Meed; Stockton; J. Redmon; Sparks. **Row Two:** West, Stevenson, Johnson, Hemric, Laxton

future homemakers of america

Row One: Cummings, Rhyne, Anderson, Key, White, Rhymer, Caudle, Fox, Sale, Adams, Hanks, Poteat. **Row Two:** Griggs, Swaim, Gambill, Nance, Harpe, Settle, Silverman, Macemore, Shepherd, A. Day, Lanning, Wheeler, Brown, Bates, S. Day, Shore, Sexton, D. Chipman, Gentry. **Row Three:** Mitchell, Royall, Mounce, Nicks, Davis, L. Chipman, Layell, Cockerham, Hayes, Taylor, Mauldin

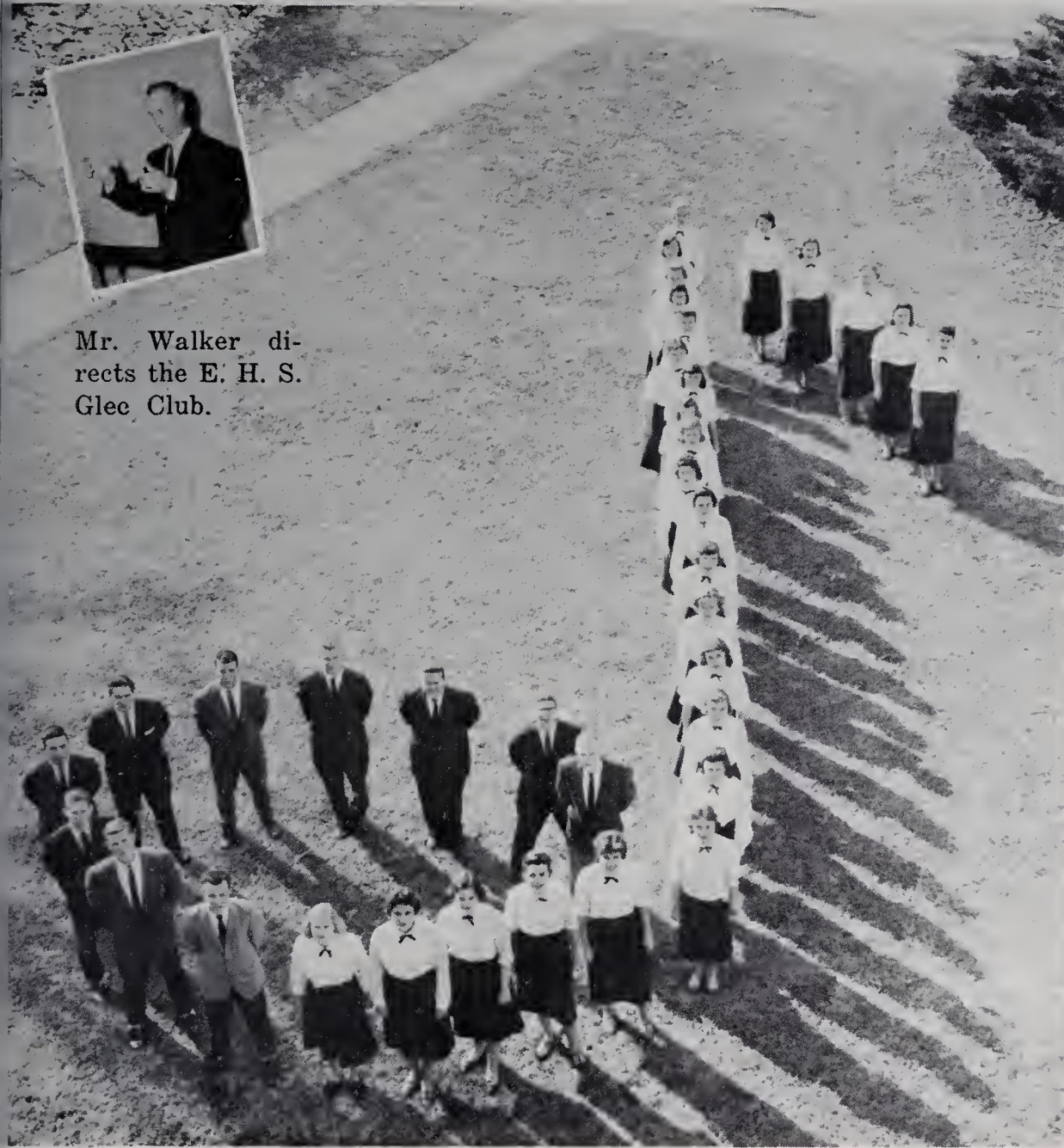
officers

President.....Eileen Holcomb
 Vice-President.....Katie Collins
 Secretary.....Brenda Park
 Treasurer.....Meg Harris
 Reporter.....Margaret Price
 Historian.....Caroline Dillon
 Song Leader.....Ann Plaster



office assistants

Elderton; Miller; Mitchell; Shepherd; Crater;
Brown; Day; Evans; Mr. Rogers, adviser



Mr. Walker directs the E. H. S. Glee Club.

glee club

Blackburn, Chatham, Evans, Gregory, Hart, L. Johnson, Laxton, Osborne, Overcash, Wampler, Harpe, Martin, Cooke, Blevins, Tinsley, M. Gambill, J. Gambill, Holcomb, Park, Settle, C. Cockerham, Carrico, Hayes, B. Cockerham, Chipman, Poplin, Bates, Baker, Wiles, Gentry, M. Johnson, Cranford, Hall, Eidson, Collins, Shepherd, Walker

bus drivers

Burchette Blackburn; Lawrence; Jackson; Hampton; Mr. Parker, adviser



Alberto and Norman, our foreign exchange students, tell each other of their experiences abroad.



Mae Gentry, Central District Winner of Job Interview Contest, displays her trophy.



Our '58 Junior-Senior Prom—A most wonderful night to remember



Benny, Garland, Alice and Mary Etta represented E. H. S. at the Nineteenth Annual Tar Heel Boys' and Girls' State.



Ellen, Alberto, Norman and Mary Anne presented a radio program over WIFM during American Education Week.



Bob and Anne hand report cards to parents attending the Parent-Teacher Conferences.

national education week

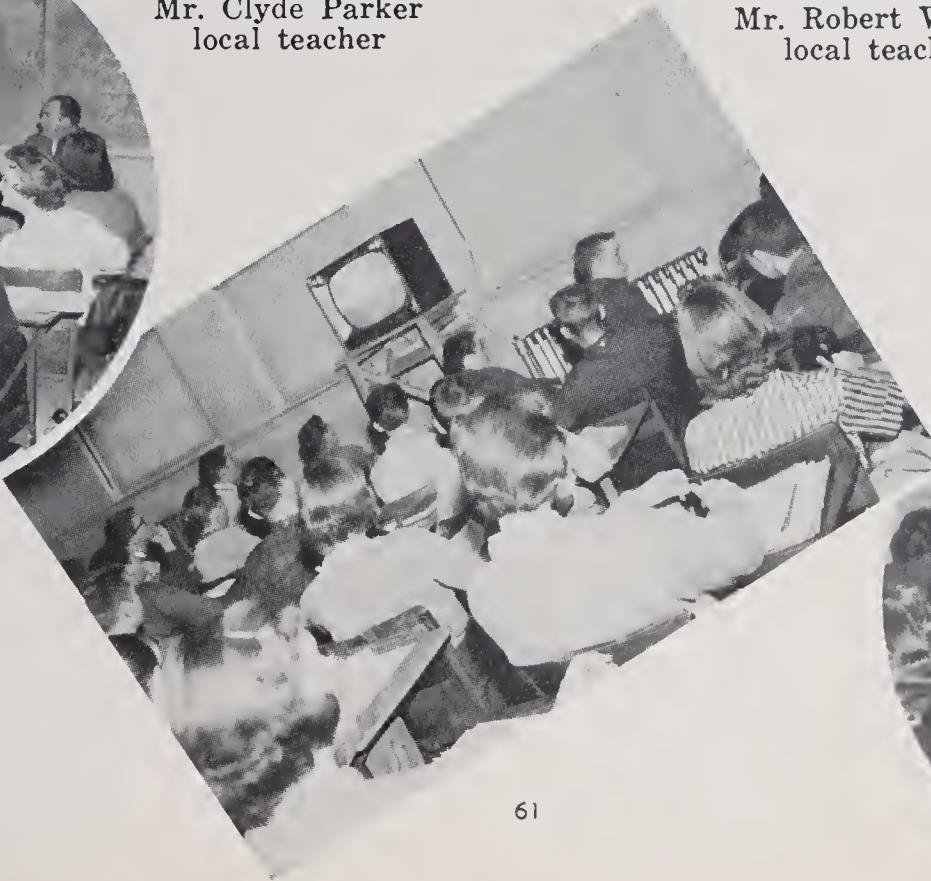
educational television

Elkin's first experience with educational television proved to be most successful this year. Approximately two hundred students participated in this relatively new area of education.



world history
Mr. Marcus Floyd
television teacher
Mr. Clyde Parker
local teacher

general science
Mrs. S. E. Denton
television teacher
Mr. Robert Walker
local teacher



united states history
Mrs. Lois Edinger
television teacher
Mr. Clyde Parker
local teacher





Mary Lou Meed
editor

Tommy and Mr. Kilby
look on as Marie types
page after page of
copy.



...
e
l
k
a
n
t
l
e
r
s
t
a
f
f
...

Row One: M. Meed, editor; Blevins, associate editor; Layell, associate art editor; Harpe, exchange editor; Redmon, girls' fashion editor. Row Two: B. Meed, social editor; Gambill, girls' sports editor; Thompson, feature editor; Settle. Row Three: Parrott, club editor; Crater, assistant news editor; Martin, circulation manager; Smitherman, business manager; Osborne, boys' sports editor; Gregory, boys' fashion editor; Mr. Kilby, advisor

Sara, Charles and Margaret discuss ideas for clubs and fashions.



Wesley, Johnsye, Wanda and Ann mimeograph pages for The Elk Antler.



Bunny, Bobby and Betty help Claudia finish the art work.





athletics

...
f
o
o
t
b
a
l
l
...

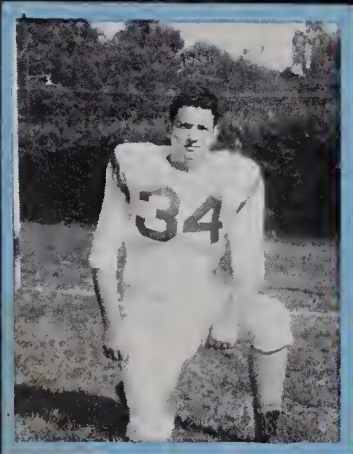
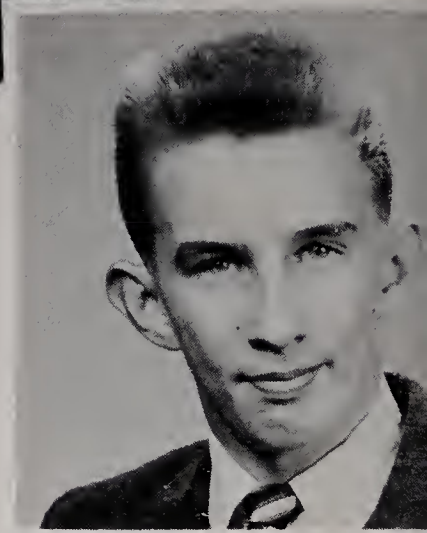
Coach Grissom and Tri-Captains George, Bill, and Ronnie admire the Yadkin Valley Conference Championship Trophy.



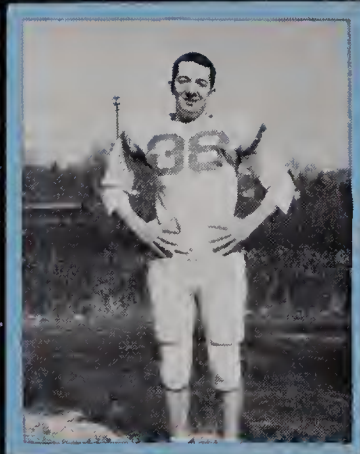
scoreboard

Elkin 26...	Granite Falls	0
Elkin 27...	North Surry	0
Elkin 32...	Jonesville	0
Elkin 7...	Boone	28
Elkin 19...	Sparta	6
Elkin 12...	Wilkes Central	28
Elkin 21...	West Wilkes	12
Elkin 34...	Booneville	0
Elkin 54...	West Yadkin	6
Elkin 34...	Yadkinville	7

Manager Buck Martin
—“right-hand man” for
football



David Caudle
tackle



Norman Graham
end



Charles Gregory
tackle



George Hart
guard

.....seniors.....

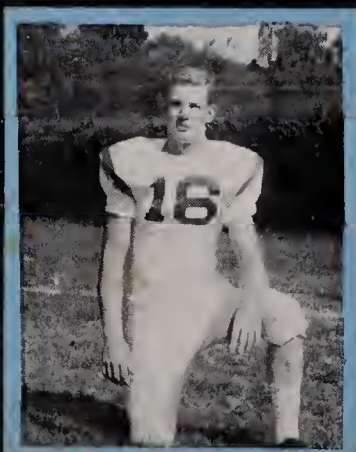
Lanny Johnson
center

Allen Laxton
tackle

Tommy Osborne
halfback

Bill Overcash
tackle

Ronnie Transou
halfback





Transou catches a pass to score an E. H. S. touchdown.

Hooper gains yardage for E. H. S.



Davis makes a successful run for Elkin High.

Holloway completes a pass for a hopeful victory.



.....
g
r
i
d
i
r
o
n
a
c
t
i
o
n
.....

varsity football team

Row One: Hooper, Gentry, Newman, Holcomb, Blackburn, Crummer. Row Two: Transou, Johnson, Hart, Osborne, Blackburn, Nance, Balzer, Weatherman. Row Three: Davis, Caudle, Jennings, McCain, Hall, Sprinkle, Gregory, Laxton. Row Four: Coach Grissom, Holloway, Overcash, Park, Harris, Coach Groce, Coach Eldridge

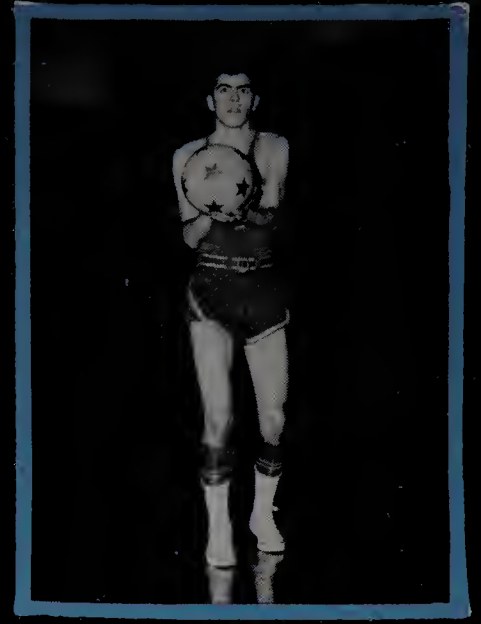




George Hart
guard



Tommy Osborne
guard

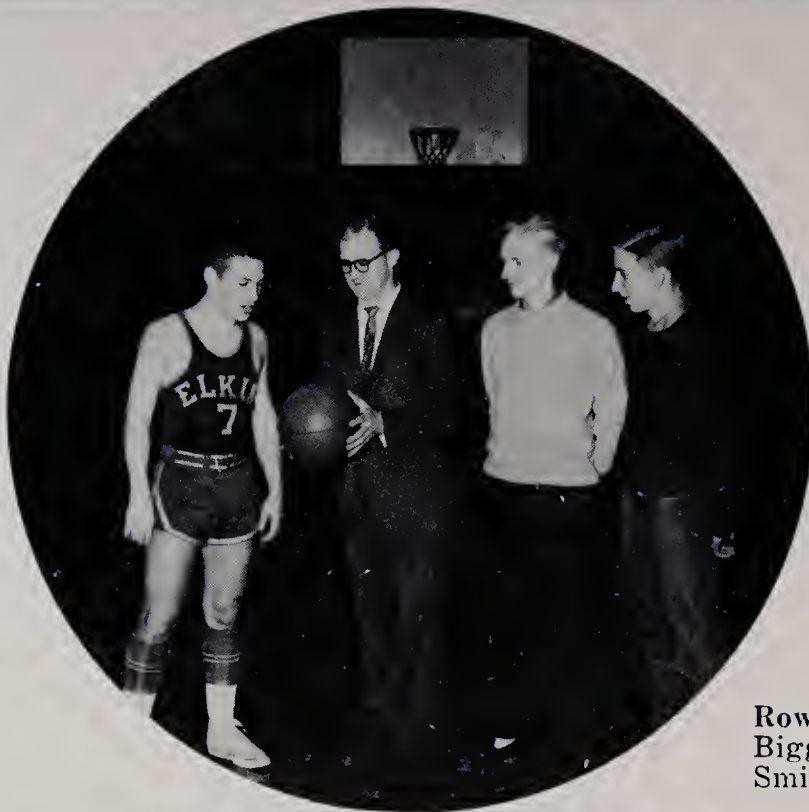


Wesley Smitherman
forward

.....seniors.....

...
b
o
y
s'

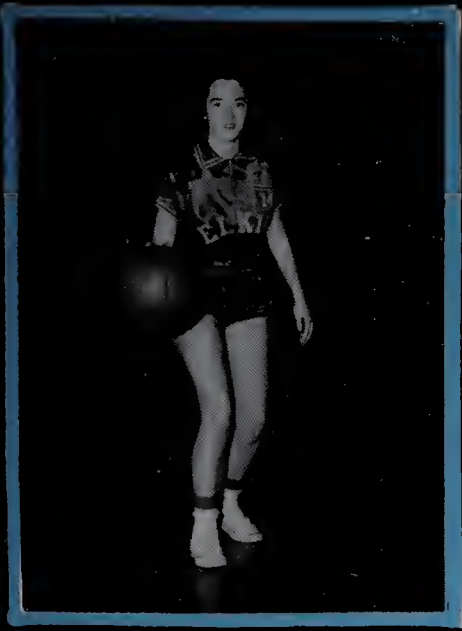
b
a
s
k
e
t
b
a
l
l
...



Mr. Eldridge, coach, gives pointers to Hooper, captain, as managers Blackburn and Martin look on.

Row One: Dillon, Hooper, Hart, Osborne, Nance, Biggs. Row Two: Jennings, Holloway, Harris, Smitherman, Eidson, McCain





Savanna Carrico
forward



Linda Eidson
guard

.....seniors.....

Coaches Pardue and Harrell, Scorekeeper Meed, Captains Burcham and Eidson, and Managers Ford and Sears contribute their share to a successful basketball program.



Row One: Carter, Carrico, Crater, Price, Butner, Layell, Scott. Row Two: Kennedy, Foster, Howland, Eidson, Burcham, Pardue, Park, Plaster

g
i
t
l
'
s
b
a
s
k
e
t
b
a
l
l
:





.....
 b
 a
 s
 e
 b
 a
 l
 l

Row One: Nance, Pardue, Wiles, Metz, Blackburn, Davis, Gentry, Freed, Vestal, Hinson. Row Two: Deatherage, Weatherman, Harris, McCain, Uldrick, Holloway, Jennings, Hall, Newman, Hooper, Transou, Osborne

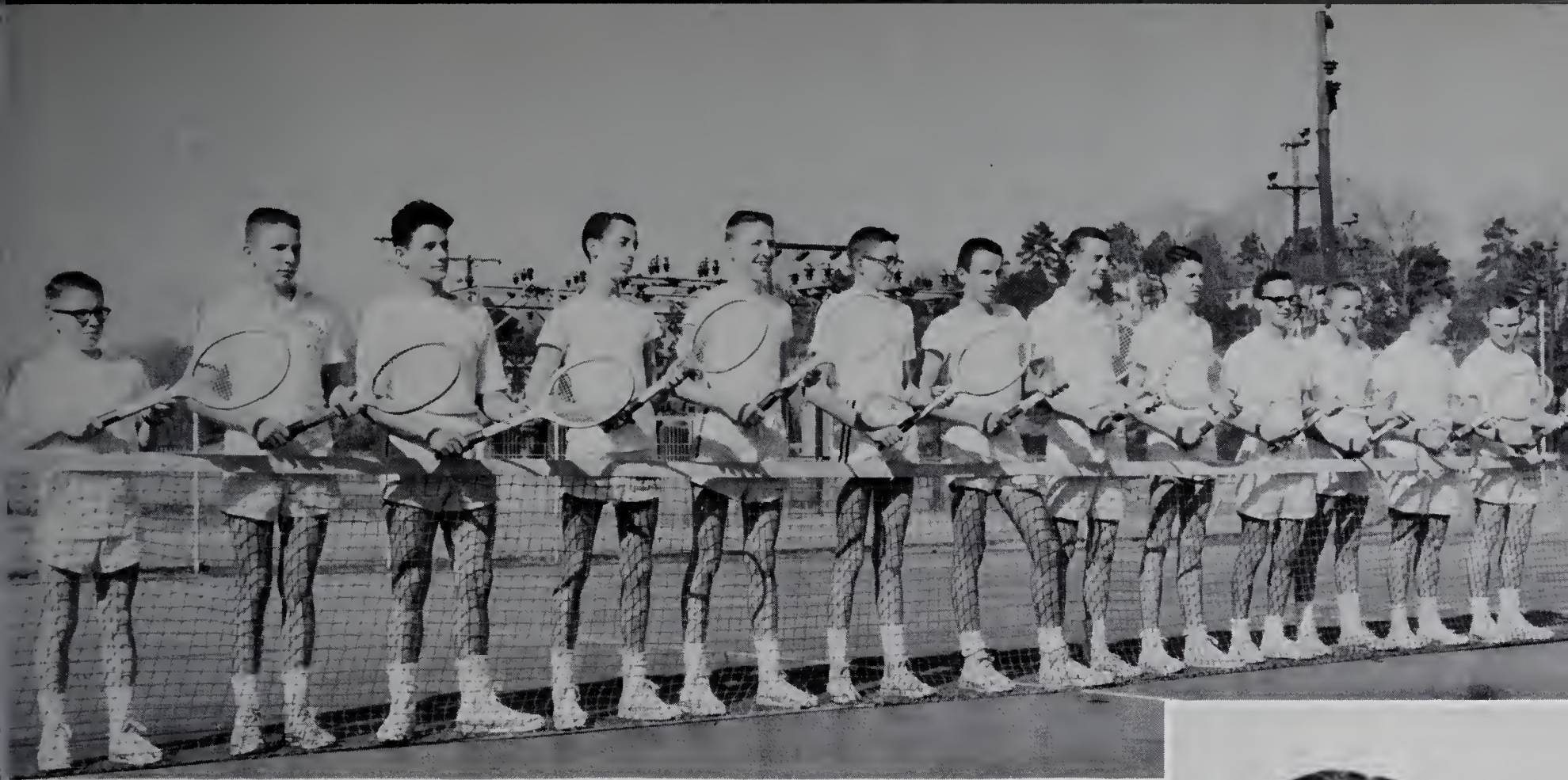


Coach Pardue and Coach Groce discuss baseball and softball tactics.

Nance, Cummings, Teague, Brinegar, Howland, Pardue, Burcham, Long, Davis, Swain, Mathis, Jackson, Price, Griggs, Spann, Gilmore, Mounce, Parrott, Chipman, Lanning, Daye, Carter, Crummer

.....
 s
 o
 f
 t
 b
 a
 l
 l





Myers, Carson, Montanari, Ford, Martin, Harding, Carroll, Eidson, Henderson, Waring, Lankford, Evans, Dillon



Coach Lewis Alexander is proud of his boys' tennis team's record of fifty consecutive wins.

∴
v
a
r
s
i
t
y

t
e
n
n
i
s
∴

Row One: Thompson, Johnson, Carter, Meed, Plaster.
Row Two: Tinsley, Davis, Price, Parrott, Pardue



.....
t
r
a
c
k
a
n
d
w
r
e
s
t
l
i
n
g
.....



Row One: C. Gentry, Billings, Bumgarner, Nance, C. Gentry, Hart, Davis, Transou, Newman, Hinson. **Row Two:** J. Holloway, Nail, Dillon, Pardue, Graham, Jackson, Fox, Jennings, Smitherman, S. Holloway, Overcash, McCain, Hall, Johnson, Osborne, West

Coney pins Alberto's shoulders in a "Half-Nelson."



Waring, Thompson, McCain, Newman, Nail, Holcomb, Payne, Chatham, Montañari, Gentry, Hall, Caudle





boys' basketball

Row One: Byrd, Freeman, Carson, Crummer, Metz, Weatherman. Row Two: Harris, Wiles, Lankford, Blackburn, Carroll, Brinegar

.....
j
v
s
p
o
r
t
s
.....

girls' basketball

Row One: Gilmore, Barker, Teague, Rhyne, Day, Cummings, Griggs, Brown, Long. Row Two: Lanning, Lyon, Chipman, Mounce, Eldridge, Johnson, Mathis, Harris, Windsor, Eller



football

Row One: Poplin, Wooten, Rainey, Page, Pardue, Vestal, Freed, Wilmoth, Snow. Row Two: Coach Groce, Byrd, Guyer, Gentry, Wiles, Blackburn, Thompson, Hall





Cranford, McCoin, L. Shepherd, Cock-
erham, Pearson, Stockton, Weaver



S. Day, Key, Hayes, Sale, J. Shep-
herd, A. Day, Harris

...
c
h
e
e
r
l
e
a
d
e
r
s
...

Miss Thomas, cheerleader adviser;
Jane Franklin, chief cheerleader; and
Mr. Hayes, pep rally adviser; discuss
plans for a forthcoming pep rally.

"V-I-C-T-O-R-Y!"





"One-two-three-four!"



"Mr. Grissom wonders if they'll ever learn!"



"Right hands cross and around you go!"



"Looks so easy—"

"Up and over, girls!"



...
p
h
y
s
i
c
a
l
e
d
u
c
a
t
i
o
n
...



Mrs. Nixon, Ellen and Alice get ideas for The Elk by reviewing other annuals.

...
e
l
k
s
t
a
f
f
...

Row One: Cooke, Cranford, Hart.
Row Two: Allen, Poplin, Redmon, Meed. Row Three: Montanari, Overcash



Blanche and Betty check pages as Pat graphs them.



Looking at just a few of the many pictures made for The Elk are Arlie Stanley, photographer and Jane.

George, Al and Bill sell ads to interested merchants.





ads

CONGRATULATIONS TO THE STUDENTS AND
FACULTY OF ELKIN HIGH SCHOOL
VISIT THE CHATHAM COUNTRY STORE
FOR ALL SORTS OF BARGAINS
BLANKETS, UPHOLSTERY, APPAREL, FABRICS,
HOOKED RUGS, ODDS AND ENDS

CHATHAM MANUFACTURING COMPANY



WALL'S JEWELERS

Watch and Jewelry Repairing

Elkin, Mt. Airy, North Wilkesboro,
North Carolina

ISENHOUR'S JEWELRY

Gifts That Last

Main Street

Elkin, N. C.

Compliments of

ELK PHARMACY

Phone 310

Elkin, N. C.

Always at Your Service

Compliments of

HALL-KNOTT & EDWARDS

117 East Main St.

Elkin, N. C.

Compliments of

WESTERN AUTO

Home-owned

Elkin, N. C.

Compliments of

BEN FRANKLIN 5 & 10

Elkin, N. C.

**MATHIS-PARDUE
FURNITURE COMPANY**

HOTPOINT, TV, and APPLIANCES

Guaranteed Best Quality
at Lower Prices

Elkin, N. C.

Compliments of

**LUCY GRAY'S
BEAUTY SHOPPE**

Phone 380

Elkin, N. C.

Compliments of

**BI-RITE SELF-SERVICE
GROCERY**

Phone 956 1125 Elk Spur Ext.
Elkin, North Carolina

Compliments of

Slater System Food Service

We specialize in catering to private parties, wedding receptions, etc.

Compliments of

McDANIEL'S DEPT. STORE

Elkin, N. C.

Compliments of

**FRAZIER
INSURANCE AGENCY**

209 West Main Street
Telephone 822
Elkin, North Carolina

**CARL W. STEELE
JEWELRY STORE**

WATCHES—DIAMONDS—JEWELRY
GIFTS

Phone 378
206 East Main Street
Elkin, N. C.

Compliments of

Harris and Wagoner, Inc.

Elkin's Leading Clothing Store
and
North Wilkesboro's Leading Clothing Store
Elkin and North Wilkesboro, N. C.

Compliments of

**SURRY TRACTOR
COMPANY**

Elkin, N. C.

YADKIN

FINANCE CORPORATION

"HOME COMPANY FOR HOME FOLKS"

Elkin, N. C.

Compliments of

COLLINS PURE OIL SERVICE STATION

204 West Main Street

Elkin, N. C.

Peele & Thompson Radio, TV Appliance Company

RCA—ZENITH—MOTOROLA

We Sell the Best and Service the Rest

C. E. Peele—A. K. Thompson

Phone 362

124 West Main St.

Elkin, N. C.

Rambler—"Common Sense Car."

GREENWOOD AUTO CO.

Phone 999 or 1195

AIRPARK CANTEEN

Grade "A" Cafe

Sheltered Curb Service

100 Good Food Items

Carry Out Service

Phone 888

Compliments of

TAYLOR DISTRIBUTING COMPANY

Jack's and F. F. V. Cookies

Elkin, North Carolina

L. G. BALFOUR COMPANY

"Known wherever there are schools and colleges"

Class Rings and Pins

Commencement Invitations

Diplomas - Personal Cards

Club Insignia - Medals & Trophies

Representatives:

AL BEALLE

JOHN BRUCE



Plan
a
Party



**BRING HOME
THE COKE IN
KING-SIZE**

™COKE™ IS A REGISTERED TRADE-MARK

Compliments of

MARTIN BAKE SHOP

Telephone 615

Jonesville, N. C.

Compliments of

**BLACKWELDER
FURNITURE CO.**

The Home of Quality Furniture
for LESS MONEY

Open 'til 7:30 P. M.

Elkin Phone 150

Jonesville Phone 550

**MARTIN'S
FLOOR COVERING**

Quality Craftsmanship

Jonesville, N. C.

Phone 1037

DOBBINS OIL CO.

Distributor of Pure Oil Products

Phone 481

Elkin, N. C.

Compliments of

**ALEXANDER-STEVENSON
FUNERAL HOME**

Phone 800

Elkin, N. C.

F. W. CHEVROLET, INC.

Elkin, N. C.

Sales and Super Service

Wrecker Service

Night Phone 775

Day Phone 255

Compliments of

**YADKIN
VALLEY PACKERS, INC.**

Processors of "Piedmont's Best"

Compliments of

MINUTE GRILL

Compliments of

SPAINHOUR'S

A Modern Department Store

Elkin, North Carolina

Compliments of

BELK-DOUGHTON COMPANY

"REMEMBER YOU SAVE AT BELK'S"

Elkin, North Carolina

DAVIS INSURANCE AGENCY

for

Protection

We're Proud of Our Claims Department

State Building

Elkin, N. C.

Phone Office 182

Residence 1048

Compliments of

KLONDIKE FARM

Elkin, N. C.

Serving Elkin and Winston-Salem areas with Klondike Golden Guernsey Milk. Finest milk produced anywhere.

Phone: Elkin 30-R



He's busier every day, yet always ready when you need him...to protect health, prevent accidents, guard your streets and playground and building...help in your parents' shops and factories, and add comfort in your homes.

DUKE POWER COMPANY

Serving the Piedmont Carolinas

CAROLINA BLOOMER COMPANY

Phone 91

209 East Main St.

Elkin, N. C.

Manufacturer of

Women's and Children's Fine Quality Lingerie

Compliments of

THOMASSON FLORIST

Compliments of

HOLCOMB BROTHERS

Phone 254

Congratulations and Best Wishes
to the Class of 1959

**ELKIN-JONESVILLE
BUILDING AND LOAN
ASSOCIATION**

Compliments of

**CHAPPELL
INSURANCE AGENCY**

Hotel Elkin

Phone 171

Compliments of

**ROSE BROTHERS
EXCAVATING CO.**

Phone 724-M

Phone 1026

Jonesville, N. C.

Compliments of

BOOSE FLOWER SHOP

Compliments of

BRENDLE'S HARDWARE

**J. W. SHEPHERD
CONSTRUCTION., INC.**

Phones 532 & 424

Commercial & Residential Building

FHA, Va. & Conventional Loans

"WE STRESS QUALITY"

Compliments of

Royall-Cox Agency, Inc.

109 North Bridge Street

Elkin, N. C.

Compliments of

**LAWRENCE
DRY CLEANERS**

Elkin, N. C.

**WINEBARGER
MOTOR COMPANY**

Ford-Mercury Sales and Service

North Bridge Street

Elkin, N. C.

Compliments of

**MOSELEY & REECE
WHOLESALE**

Elkin, N. C.

Compliments of

**LOWE'S
OLDSMOBILE, INC.**

Oldsmobile & GMC Trucks

ROSE & DAY, INC.

Pontiac Sales and Services

Phone 345

Night Phone 430

24-Hour Wrecker Service

**Pepsi-Cola Bottling Co.
Of Winston-Salem, Inc.**

Elkin Branch

P. O. Box 289

Telephone: 590

Elkin, N. C.

1908

1958

Congratulations on our 50th anniversary to the
Class of '59

"We need your head in our business"

Cockerham Barber Shop

115 N. Bridge St.

Elkin, N. C.

Phone 69

"You need our service to look your best"

1908

1958

Compliments of

CHAPPELL JEWELERS

Elkin, North Carolina

Compliments of

WHITE SWAN LAUNDRY

Dry Cleaning

**CASH & CARRY
STORES, INC.**

WHOLESALE

Groceries, Feeds, Meats
and Notions

Phone 230

Compliments of

**WILLIAMSON
ELECTRIC CO.**

Elkin, N. C.

ELKIN FURNITURE CO.

Manufacturers of

Bedroom Furniture

ROBERT'S MEN SHOP

The place for something new and something different.

SPECIALITIES

Farm Fit Shirts

Pants—Cat, Ivy League, and Skeet
Sport Coats—Ivy League and Blazer

ELKIN Lumber & Mfg. Company (Incorporated)

Manufacturers and Dealers in Lumber
and Building Materials

"Everything to Build Anything"

Elkin, N. C.

SUPER TIRE SERVICE

FIRESTONE

"New, Silent Safti-Grip Retreading"

Jahn Bean, Visualiner and Balancer

A. Dan Hudspeth, Owner

689 North Bridge St.

Phone 246

Elkin, N. C.

GRIFFIN'S

Sporting Goods and Gifts

Elkin, N. C.

Athletic Equipment
Office and School Supplies

Compliments of

THE ELKIN TRIBUNE

Elkin, N. C.

ROY'S RESTAURANT

"Where Friends Meet to Eat"

1111 North Bridge Street

Elkin, North Carolina

Compliments of

ROYALL DRUG CO., INC.

George E. Royall

Edwin Royall

Henry Dillon

G & B ESSO

E. C. Boyles

WHOLESALE AND RETAIL

Phone 370

Compliments of

Joe E. Harris

**GWYN INSURANCE
AGENCY, INC.**

Elkin, North Carolina

J. H. BEESON

Mutual Insurance

Phone 17

Elkin, N. C.

Compliments of

JEWEL BOX, INC.

"Your Friendly Jeweler"

122 West Main Street

Elkin, N. C.

Phone 366

DAIRY QUEEN

Home of Good Ice Cream
and Sandwiches

Compliments of

**TECHNIC
INDUSTRIES, INC.**

WHITE BROTHERS

Blacks and Building Materials
Well, Road and Drain Tile
Russcae and Steel Windows
Plumbing Supplies

Phone 627

Baonville Highway

Compliments of

DUN-WELL CLEANERS

Compliments of

Sunshine Laundry & Cleaners

Jonesville, N. C.

Phone 1056

Laundry and dry cleaning brought in by
12:00 any week-day including Saturday
will be finished that day.

Compliments of

F. A. BRENDLE & SON

FIRESTONE



SPEAS HOME & AUTO SUPPLY
Philco

Compliments of

J. C. PENNEY CO.

Phone 138 108 E. Main St.
Elkin, N. C.

Compliments of

ED SNYDER'S



Compliments of

THE BANK OF ELKIN

Member of the Federal Deposit
Insurance Corporation

Elkin Jonesville
North Carolina
Phone 80

Compliments
of

COBLE DAIRY

Compliments
of

**WINSTON ROAD
FURNITURE CO.**

Photographs for Yearbooks

**STANLEY AND PARK
STUDIO**



"The Finest in School Photography"

SPONSORS

Lewis Alexander
Allen, Henderson and Williams
Dr. R. M. Cooke
Dr. J. M. Hall
Dr. J. A. Harrell
Dr. R. B. Harrell
Dr. J. H. Howard
Dr. Claude A. McNeill, Jr.
Dr. W. B. Reeves
Dr. E. C. Schiebel
Dr. V. W. Taylor, Jr.
Amoco Super Service Station
Blue-Vue Restaurant
Carolina Ice and Fuel Company
Casstevens Hardware Company

Cheek's Jewelry Store
Elmore's Grocery
Elmore's Insurance
Harris Electric Company
Hotel Elkin Coffee Shop
Hugh Chatham Memorial Hospital
Jonesville Hardware Company
Mayflower Beauty Salon
Reeves Theater
Rose's 5-10-25c Store
Rumble Furniture Company
Snow Motor Company
State Road Hardware
Walker's 5 & 10c Store
Tom's Studio

Autographs

Autographs

Autographs









