

THE 1959

*Rambler*

















NINETEEN HUNDRED AND FIFTY-EIGHT

# THE ELK

published by the Journalism Class of

ELKIN HIGH SCHOOL

Elkin, North Carolina

*Editor*.....Siyble Carlton  
*Assistant Editor*.....Carol Burcham  
*Business Manager*.....Claude Royall  
*Art Editor*.....Mary Ellen Caudle  
*Advertising Manager*.....Allen Laxton  
*Photography Editor*.....Laura Sears  
*Class Editor*.....Anita Reichard  
*Sports Editor*.....Nancy Franklin  
*Circulation Manager*...Vicki Mayberry





*...brings you a picture of*

Elkin High, our Alma Mater, means so much to all who have trod here. The pattern for days at E.H.S. sifts into a recipe of memories and happiness . . . the changing of classes . . . club meetings . . . sports . . . Junior-Senior . . . parties . . . holidays . . . trip to Washington . . . plays. These thoughts and many more, equally pleasant, return whenever Elkin High is mentioned. "Farewell to thee!"

The class officers and their dates lined up for the Grand March  
at the '57 Junior-Senior Prom.



*the year of activities*





Students buying supplies from  
Lena at the Student Store

## *Contents*

DEDICATION  
Page 12

ADMINISTRATION  
Page 14

SUPERLATIVES  
Page 16

CLASSES  
Page 18

SENIOR STATISTICS  
Page 29

ACTIVITIES  
Page 46

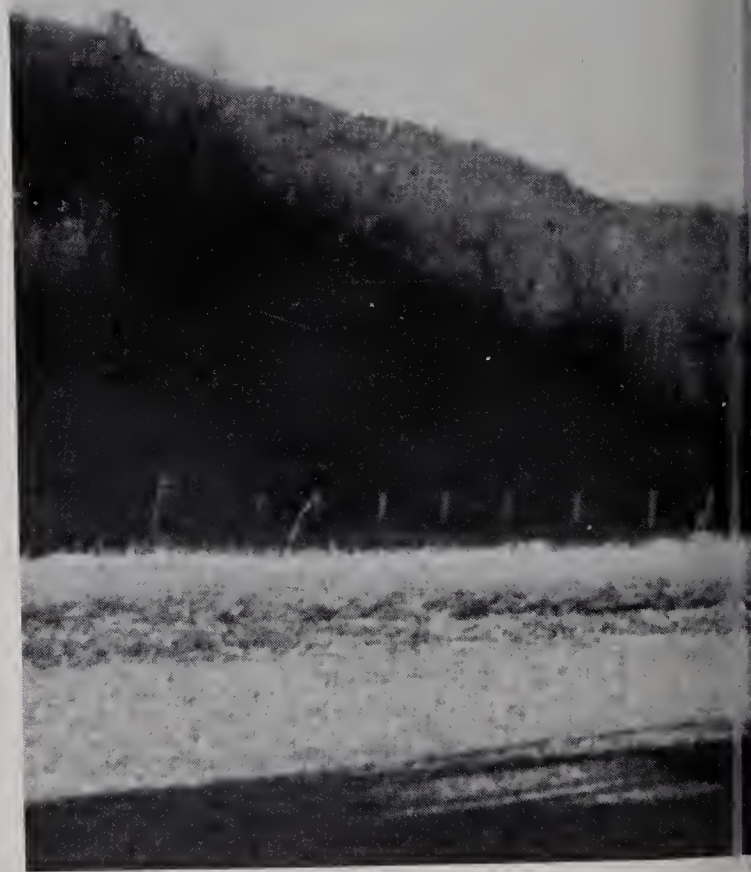
ATHLETICS  
Page 60

ADVERTISEMENTS  
Page 72

*at Elkin High School.*



Representing Elkin High School at Girls' and Boys' State were Nancy Franklin, Lawrence Laxton, Judy Beale and Jim Shore. These students were chosen on the basis of citizenship, scholarship, and leadership abilities.



*“Far below the Blue Ridge*





This picture is typical of the scenic views of the beautiful Blue Ridge Mountains which may be seen from the windows of EHS.

*Mountains... There's A Place We Love...*





Mrs. Nixon's homeroom listens reverently as Vicki conducts homeroom devotions

*And we live there always*





The mad scramble to meet the next class on time

*seeking... Higher aims above....*



Tri-captains Will Newman, Jim Allen, and Wally Holcomb with the Homecoming Queen, Margaret Gentry



Neils Jacobsen, the foreign exchange student from Broger, Denmark, telling some friends about his home



*We've a school of which we're*





*proud.... We'll always be true....*





*This we sing our Alma Mater*





*To Our Gold And Blue."*







# *We Dedicate..*

In sincere respect for his loyalty and years of service to his students through instruction in his physical education classes—

for

his patient understanding,

his quiet enthusiasm,

his never-failing co-operation,

and his invaluable assistance,

we, the Journalism Class of Elkin High School, fondly dedicate the 1958 ELK to

**MR. HUBERT MORROW**







Mr. N. H. Carpenter  
Superintendent



Miss Norma Gentry  
Secretary



Mr. Fred Rogers  
Principal

## *Administration*

SCHOOL BOARD: Hoke Henderson, Hubert Parker, N. H. Carpenter, Everett Holbrook, Brady Woodruff, Richard Atkinson.



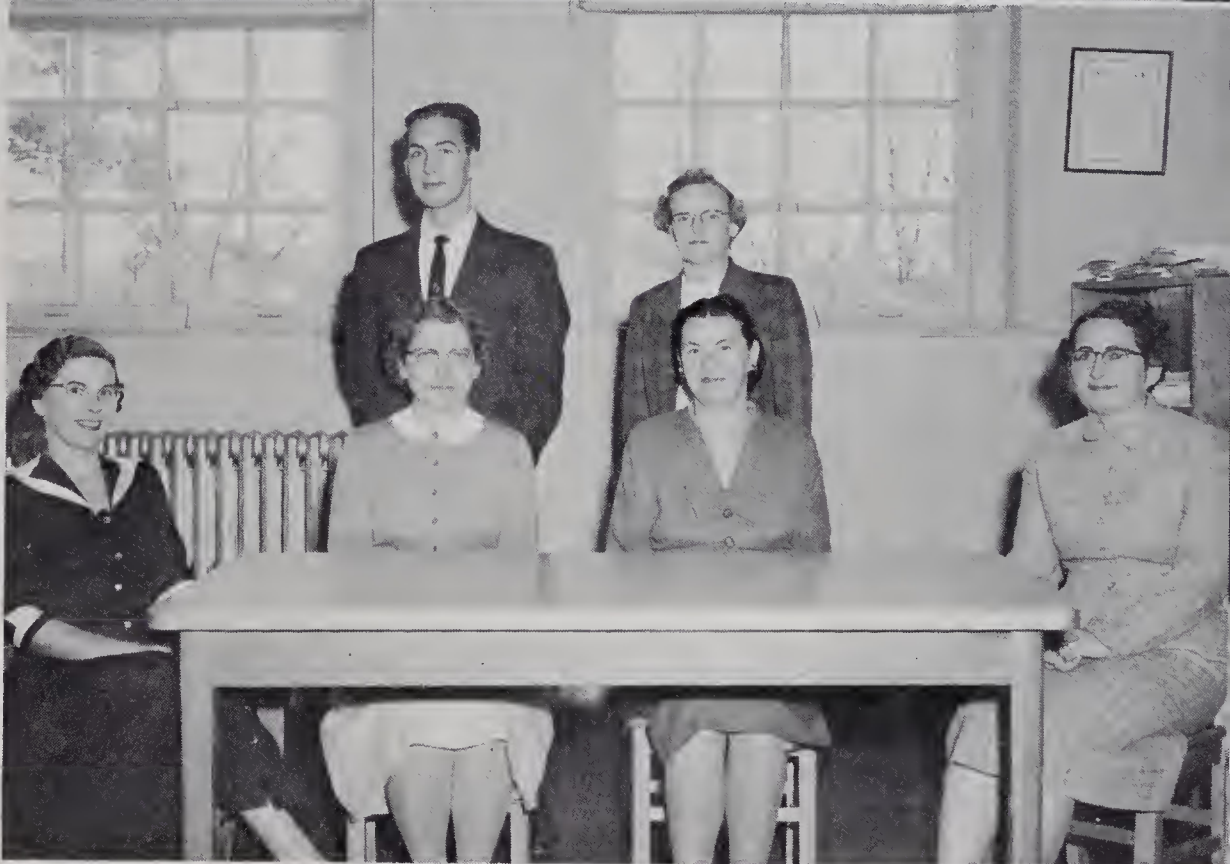


# Faculty

Mrs. Hilda McDonald  
Mr. Hubert Morrow  
Mrs. Burnis Pardue  
Mr. Claude Eldridge  
Mr. Blois Grissom  
Mr. Homer Walker



Mrs. Hardin Royall  
Mrs. Lake Haynes  
Mrs. J. F. Bivins  
Mrs. Adrian Nixon  
Mr. Rex McNeil  
Miss Emma Cooke



Mr. Clyde Parker  
Mrs. Carl Calloway  
Mrs. Beverly Norman  
Mr. Jerry Helton  
Mrs. Douglas Brendle  
Mr. Bert E. Joines  
Miss Mary Holland







## Senior

### **MOST INTELLIGENT:**

*Lena Couch      Gale Eidson*

### **MOST LIKELY TO SUCCEED:**

*Siyble Carlton      Larry Nixon*

### **MOST POPULAR:**

*Anita Reichard      Jim Shore*

### **MOST ATHLETIC:**

*Judy Beale      Wally Holcomb*







**MOST ATTRACTIVE:**  
*Margaret Gentry      Ross Fox*

**BEST PERSONALITY:**  
*Vicki Mayberry      Bob Hartness*

**WITTIEST:**  
*Jo Ann Saylor      Buddy Bruce*

**BEST SPORT:**  
*Carol Burcham      Jim Allen*

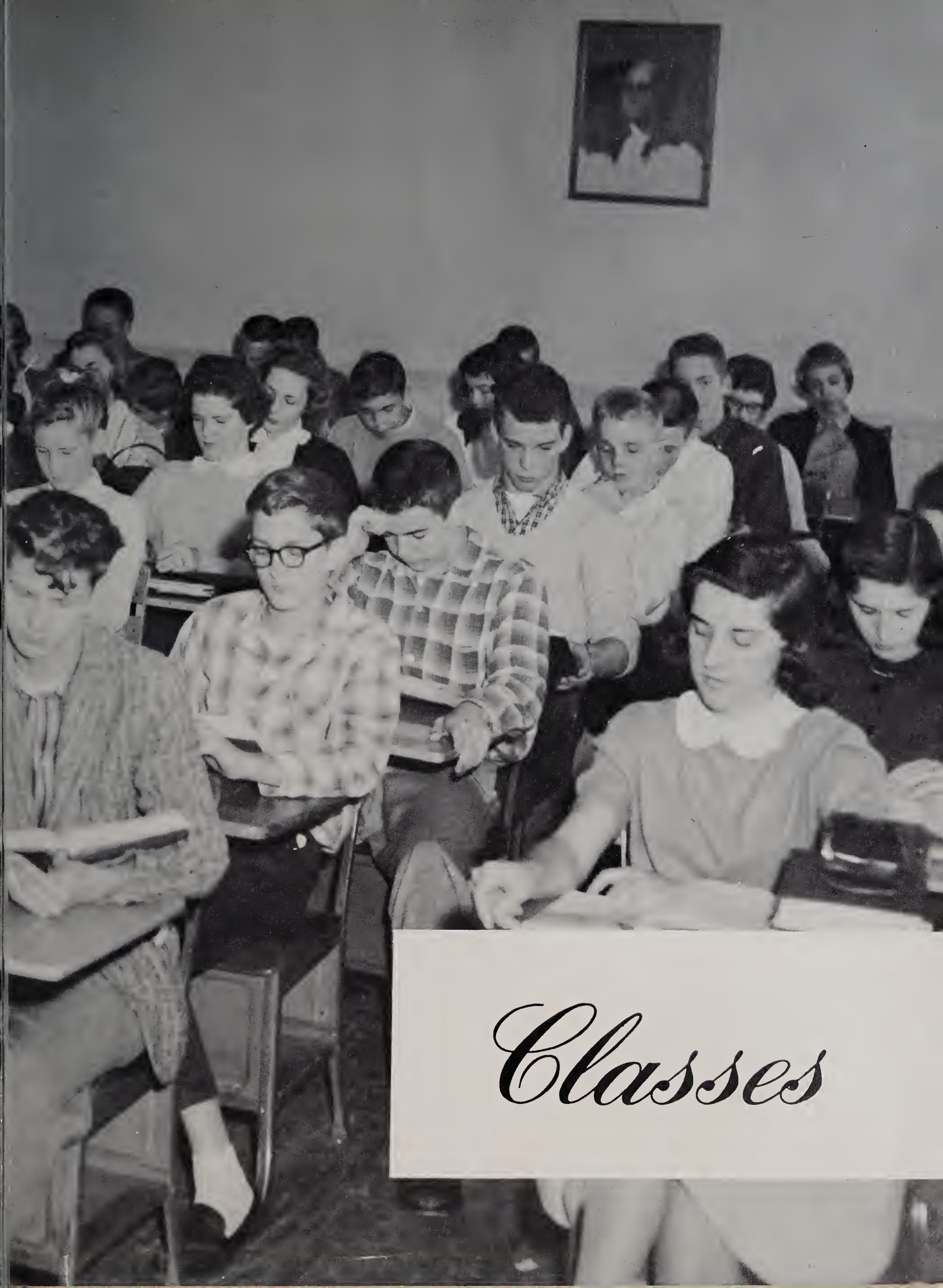
## *Superlatives*











# *Classes*



# S e n i o r s



## SENIOR CLASS OFFICERS:

*President*-----Jim Allen  
*Vice-President*-----Bob Hartness  
*Secretary*-----Nancy Franklin  
*Treasurer*-----Lawrence Laxton



## Mascots

Beth Eldridge  
 Waddell Holcomb

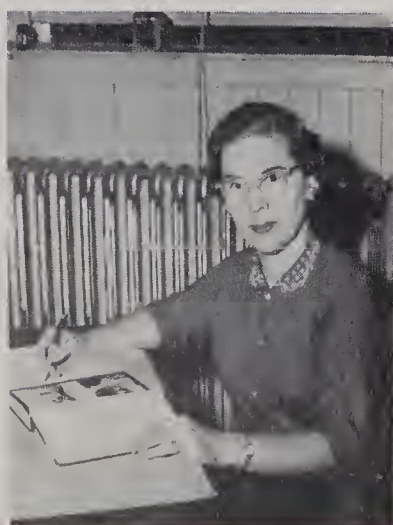
## Senior Advisers

Mrs. Hardin Royall

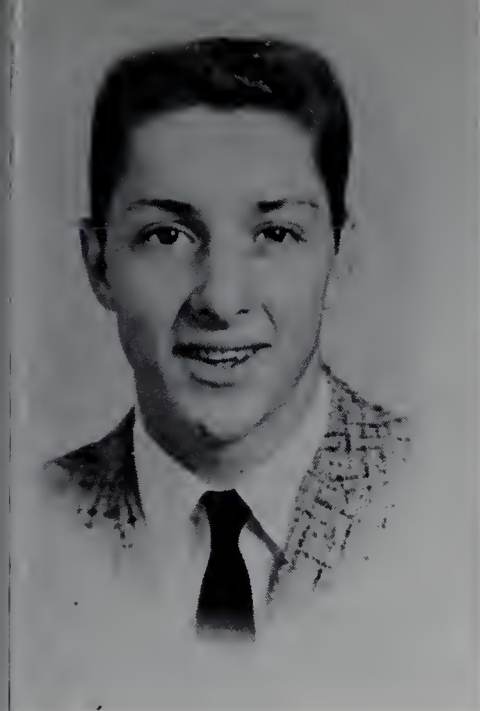
Mr. Claude Eldridge

Mrs. Adrian Nixon

Mr. Jerry Helton







Bobby Joe Adams



James Forrest Allen

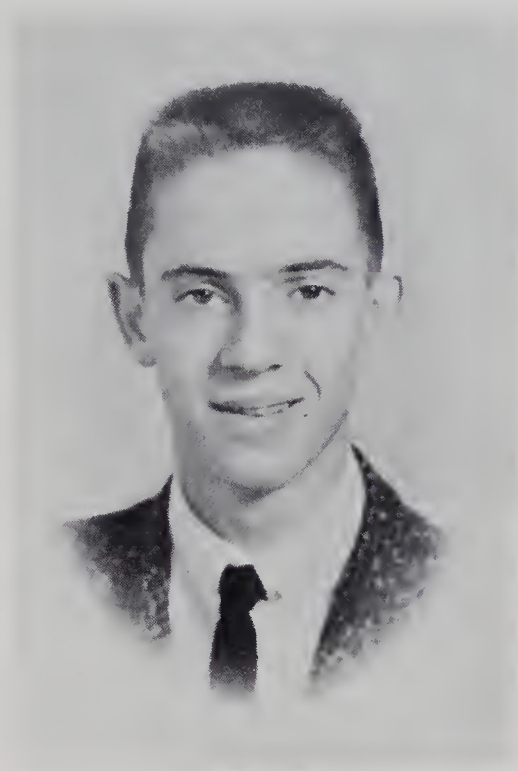


Judith Carol Beale



Alfred Lawrence Billings

*Senior  
Class*



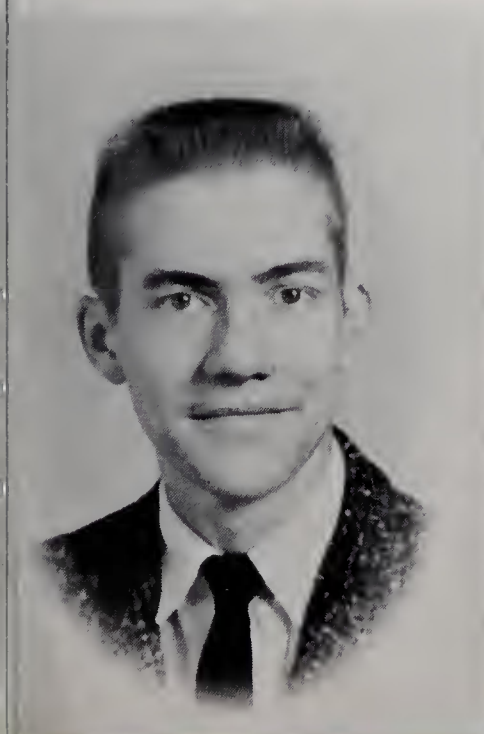
Max A. Blackburn

Fred Thomas Bruce

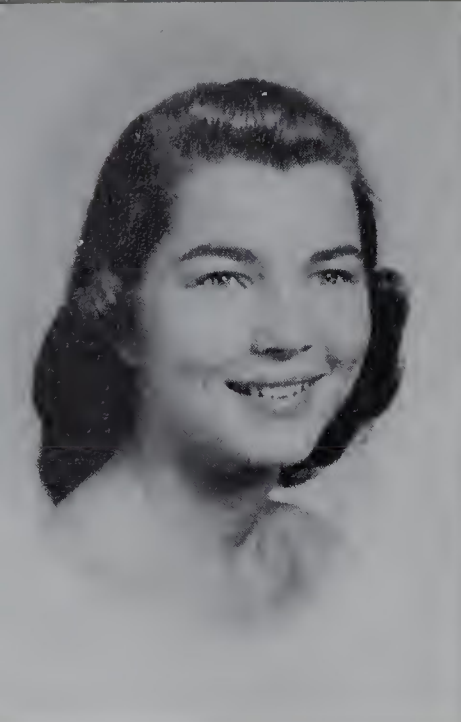
Barbara Carol Burcham

Bruce Talmadge Burchette

Siyble Ann Carlton







Dellaphine Carter



Peggy Leigh Carter



Mary Ellen Caudle



Betty Lois Chipman



William David Cleary

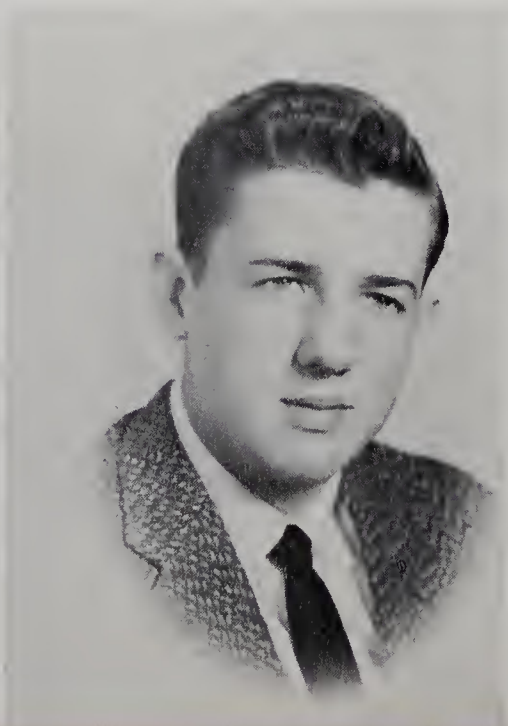
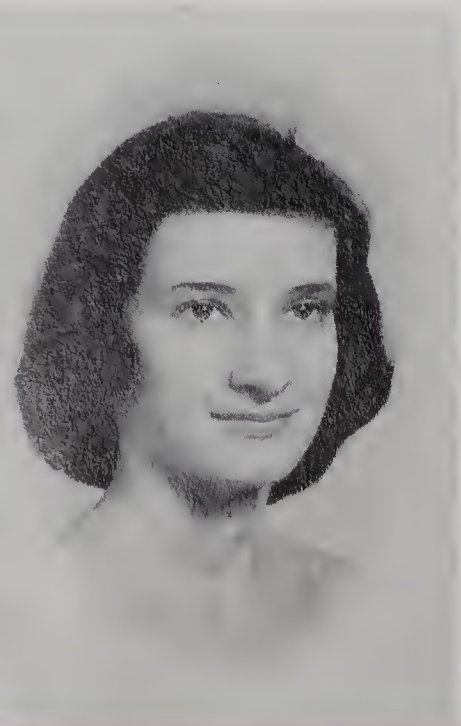
## *Senior Class*

Rebecca Lodemia Cockerham

Ronnie Glenn Cook

Janet Louise Couch

Lena Rose Couch



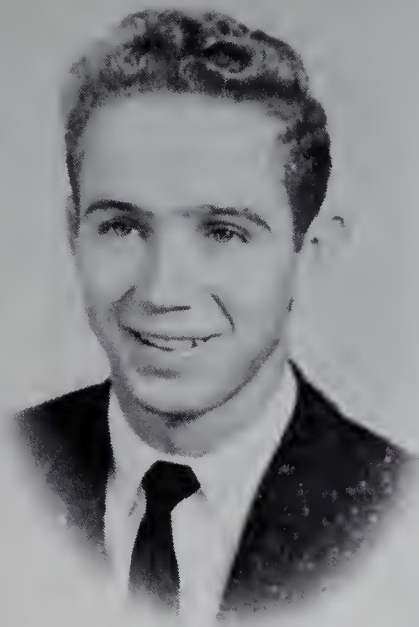




Billy Gleen Darnell



Janice Earline Darnell



Leonard Dale Darnell



Margaret Sheldon Darnell

## *Senior Class*



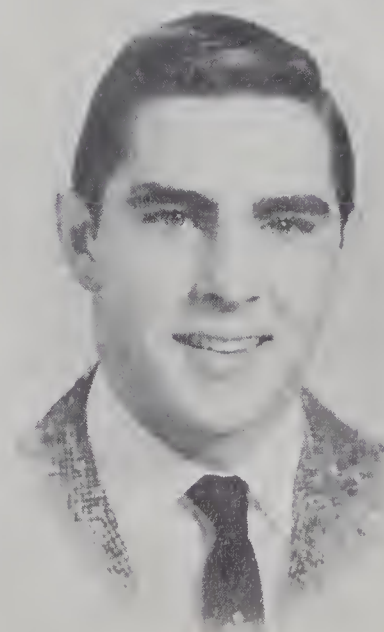
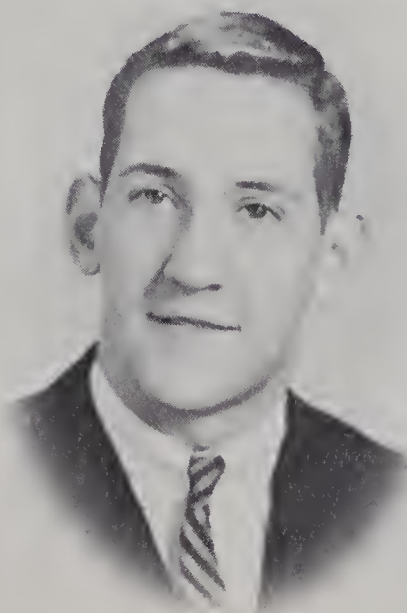
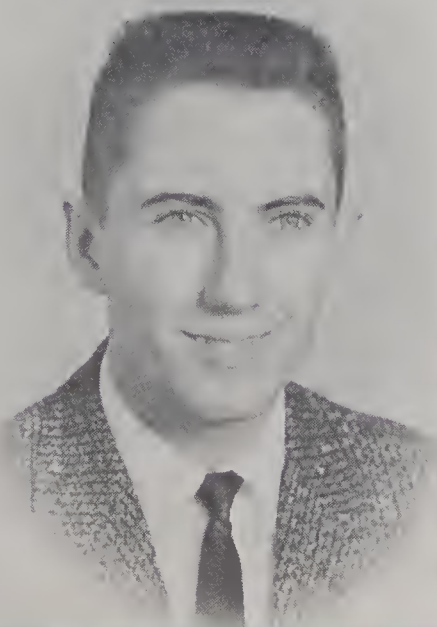
Marian Ethel Davis

Lorna Lu Dickson

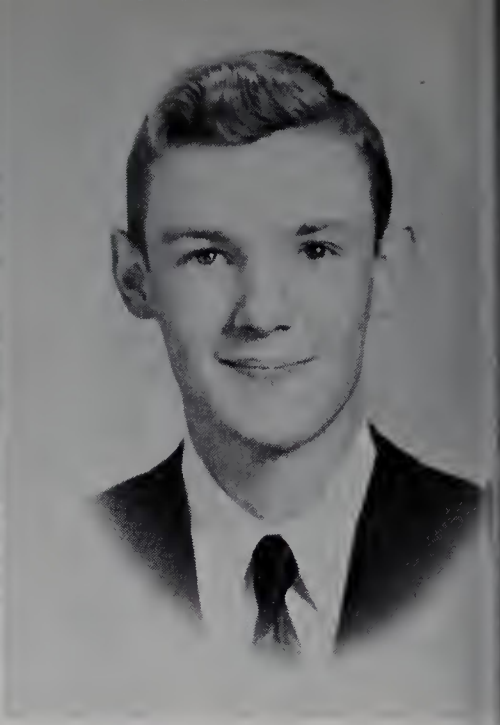
Stephen Ernest Edwards

Gale Dean Eidson

Ross Maurice Fox







Nancy Edwards Franklin

Mary Margaret Gentry

James Lee Graham

William Edwards Hall



Fred Douglas Harmon

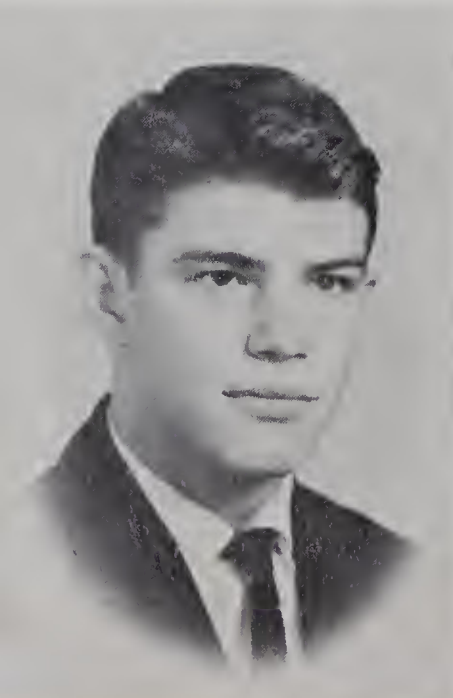
## *Senior Class*

Jerry Gwyn Harris

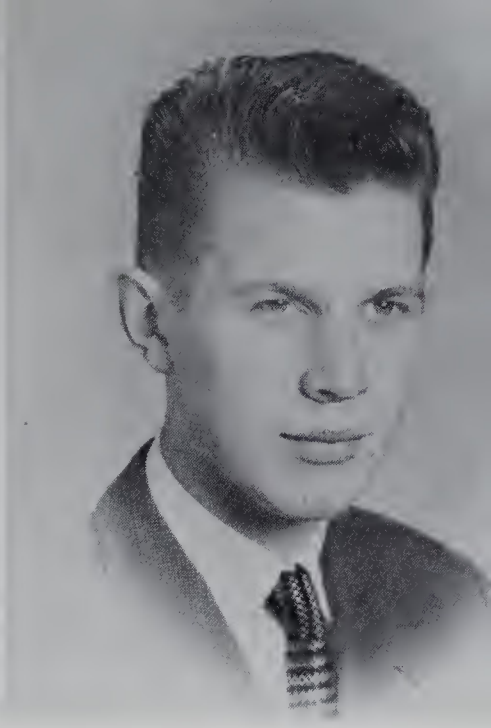
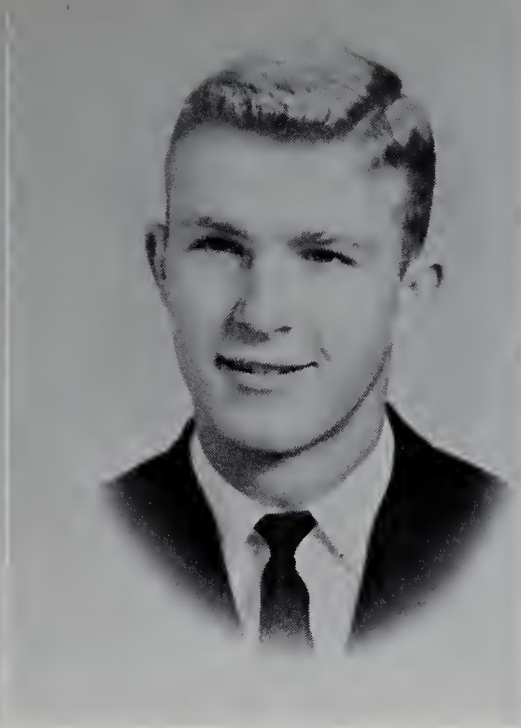
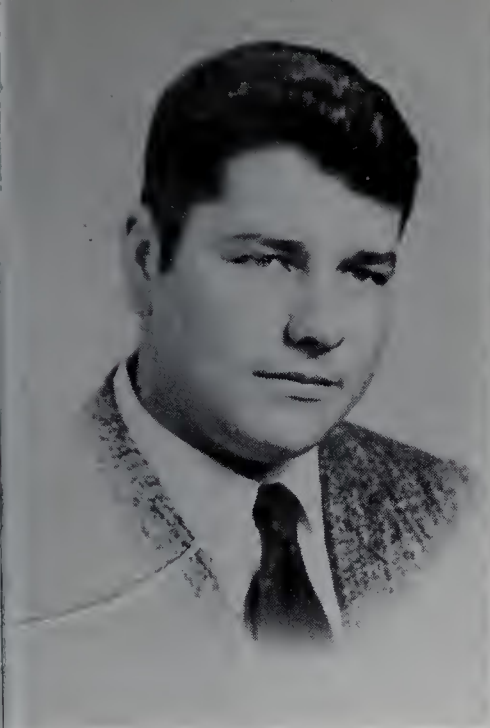
Leona Ann Harris

William Robert Hartness

Carolyn Elizabeth Hinson







Franklin Ambrose Hinson

Sigmond W. Holcomb, Jr.

William Kent Hooper

Neils-Jrn Jacobsen

## *Senior Class*



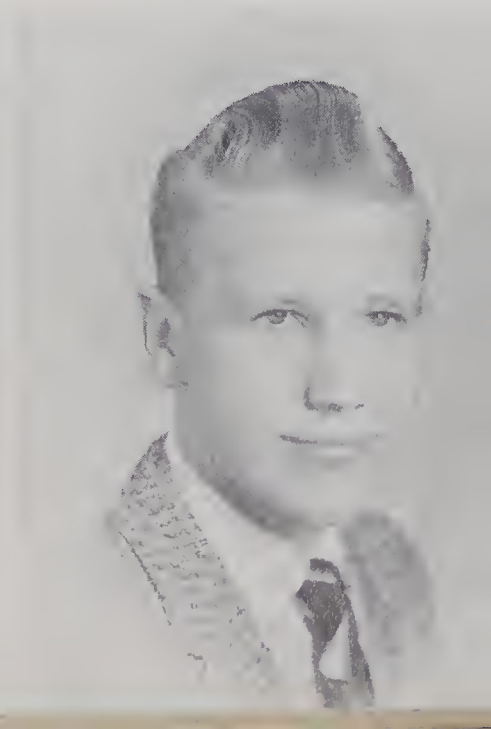
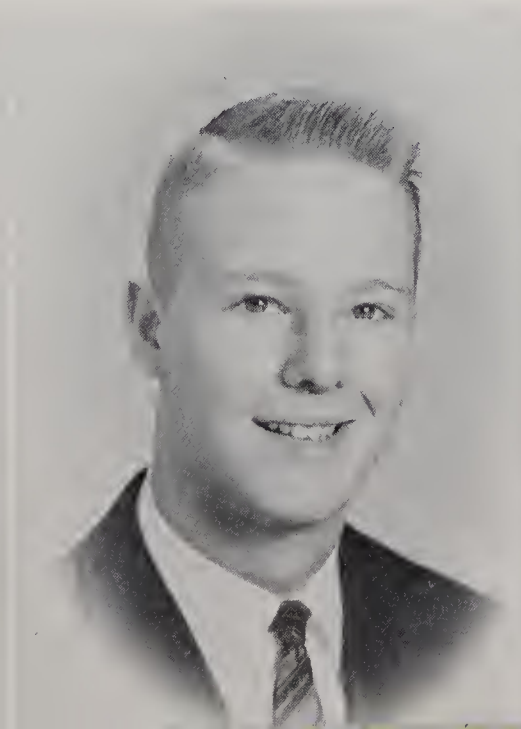
James Leon Lawrence

Joye Elizabeth Lawrence

Lawrence Wilson Laxton, Jr.

Patricia Lewis

Noah Vernon Luffman







Vicki Gwen Mayberry



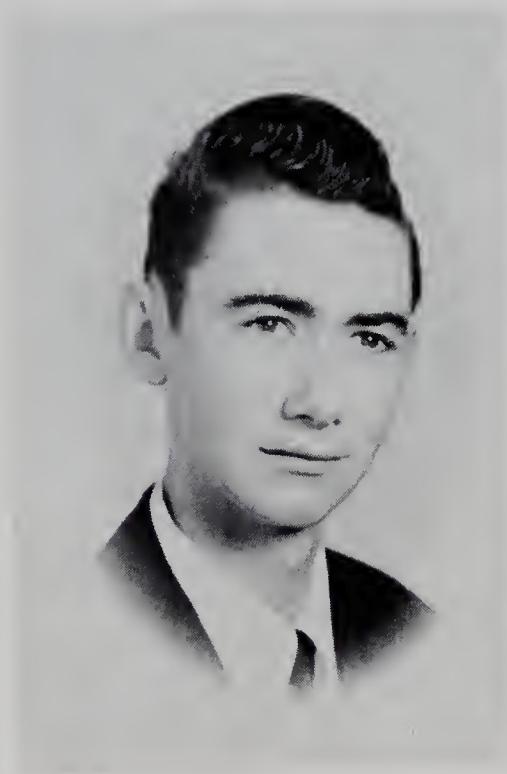
Jo Ann Mounce



Tony Edward Newman



Larry David Nixon



Harold Eugene Pardue

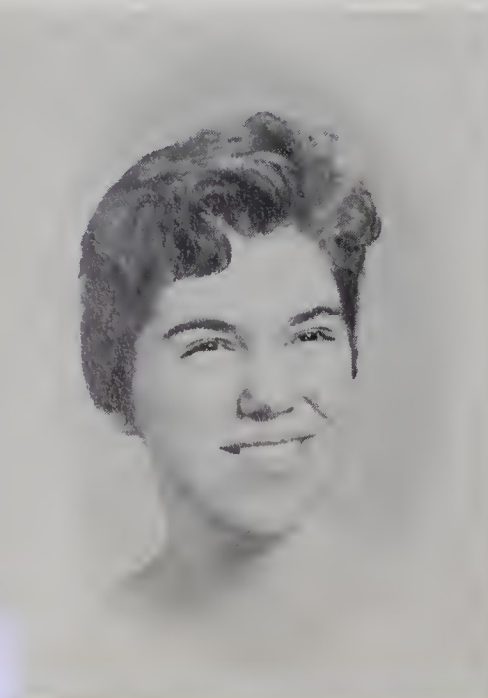
## *Senior Class*

Mary Jane Prevette

Anita Elizabeth Reichard

Claude Franklin Royall

Jo Ann Saylor







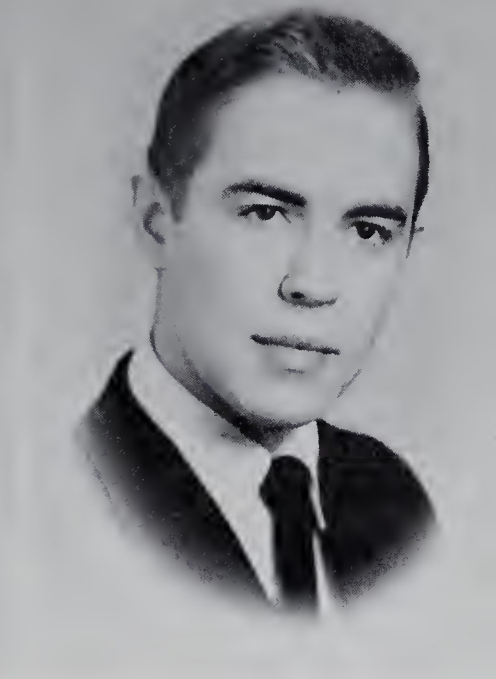
Laura Ruth Sears



James Henry Shore

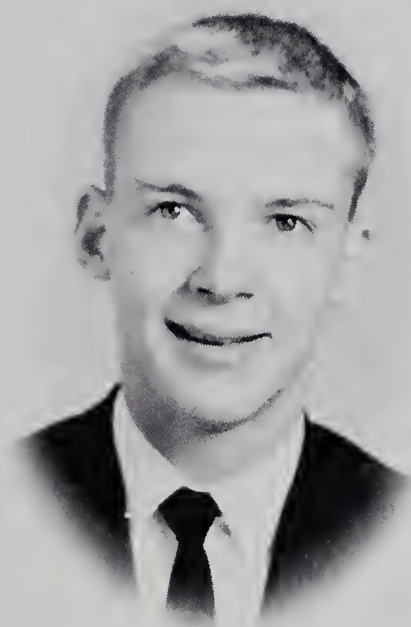


Judy Silverman



Dennis Smoot

*Senior  
Class*



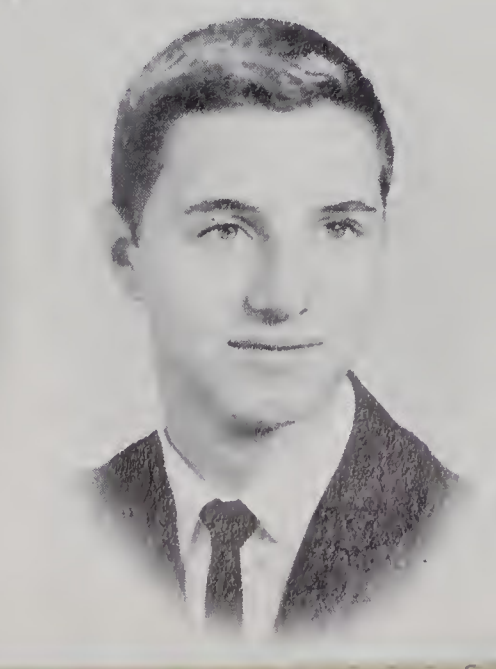
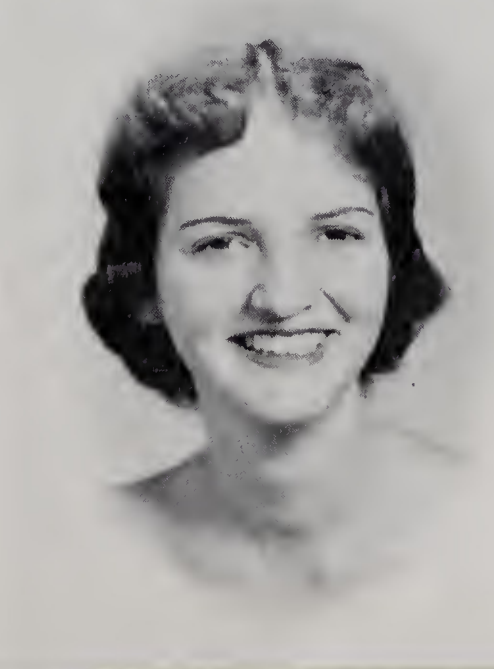
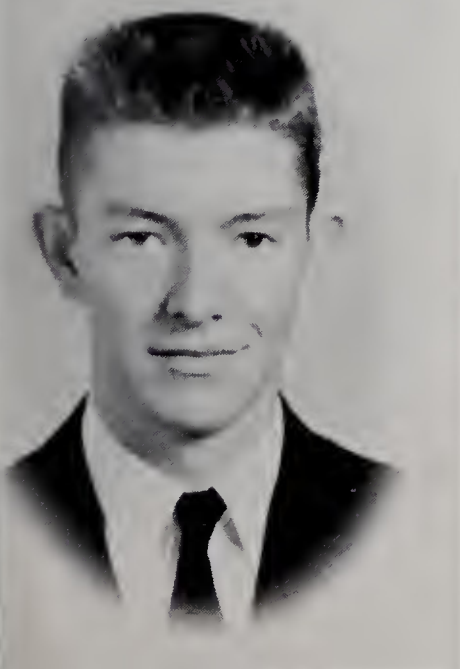
Guy Leighton Snow

June Franklin Sofley

Rama Fay Southard

Helen Hudspeth Sparks

Jay Clyde Stuart







Tony Harold Swaim



Robert Tatum



Mary Gentry Transou



Betty Lou Turner

### CLASS POEM

Though we know not where our paths may lead,  
Or what the challenges will be, indeed;  
The future will seem a force unknown  
To those of us who are leaving home.

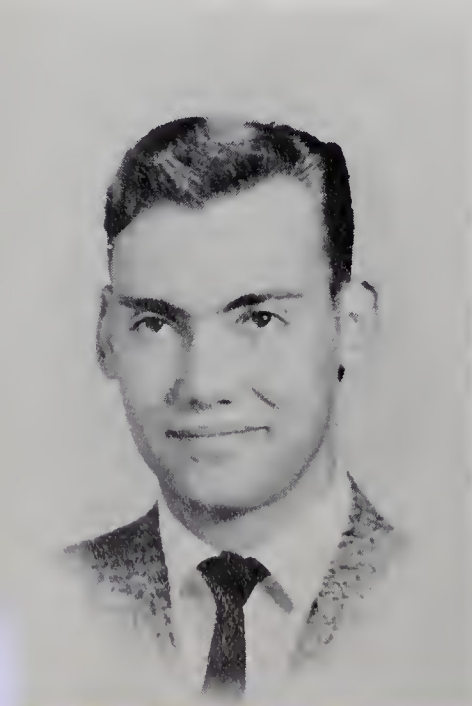
Will college claim the feminine talents,  
Or household chores, and "Lady Valiants?"  
Will our boys become famous as engineers  
Or at what will they labor for many years?

Whatever the future may have in store,  
Yet we shall treasure the years before.  
For there we gathered the memories bright,  
That forever will be a source of delight.

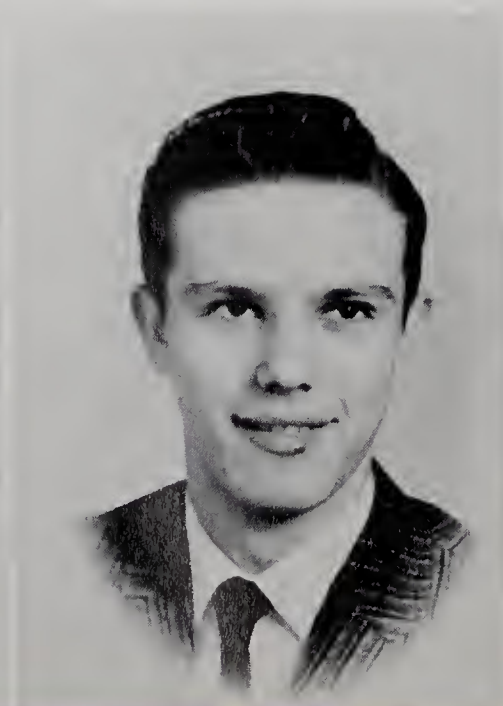
Lorna Lu Dickson, Poet

## *Senior Class*

Carl David Turner



James Henry West



Gail Jeanette White



Emily Jane Wooten





# Senior Statistics

## BOBBY JOE ADAMS "Bob"

Student Council 1; 4-H Club 1; Intramurals 2; Science Club 2, 3; Hi-Y 2, 3; Glee Club 3; Football 3; D.O. Club 4, Treasurer 4

## JAMES FORREST ALLEN "Jimmy" BEST SPORT

Latin Club 1; Intramurals 1, 2, 3, 4; Track 1, 2, 3, 4; Football 1, 2, 3, 4, Tri-Captain 4, Honorable Mention All-Conference 3; Marshal 3; Beta Club 3, 4; Monogram Club 3, 4, Treasurer 4; Class President 4

## JUDITH CAROL BEALE "Judy" MOST ATHLETIC

Basketball 1, 2, 3, 4; Intramurals 1, 2, 3, 4; Student Council 1, 3, 4, Secretary 4; Monogram Club 2, 3, 4, Secretary 4; Class Secretary 1; Band 1, 2; Tri-Hi-Y 1, 2; Beta Club 3, 4, Secretary 4; ELK ANTLER Staff 4

## ALFRED LAWRENCE BILLINGS

Football 2, 3, 4

## MAX A. BLACKBURN

Intramurals 2, 3; Science Club 2, 3; D.O. Club 4, President 4; Hi-Y 4

## FRED THOMAS BRUCE "Buddy" WITTIEST

Intramurals 1, 2; Science Club 1; D.E. Club 3, 4, President 4; Hi-Y 2

## BARBARA CAROL BURCHAM BEST SPORT

Basketball 2, 3, 4, Captain 4; Monogram Club 3, 4; Intramurals 1, 2, 3, 4; Glee Club 4; Tri-Hi-Y Club 3; Spanish Club 3, 4; ELK Staff 4; ELK ANTLER Staff 4

## BRUCE TALMADGE BURCHETTE

Baseball 1, 2, 3, 4; Basketball 3, 4; Football 3; Spanish Club 3, 4, President 4; Monogram Club 3, 4; Intramurals 1, 2, 3, 4; Class Play 3; ELK ANTLER Staff 4

## SIYBLE ANN CARLTON MOST LIKELY TO SUCCEED

Intramurals 1, 2, 3, 4; Future Teachers of America 2; Class Treasurer 3; Science Club 3; Spanish Club 3, 4; Office Assistant 4; ELK ANTLER Staff 3; ELK Staff 3, 4

## DELLAPHINE CARTER "Butch"

Miss Elkin High 2; Monogram Club 3, 4; Basketball 1, 2, 3, 4; Tri-Hi-Y 1, 2; Intramurals 1, 2, 3; Library Assistant 4; F.H.A. 1, 2, 3, 4, Secretary 3; 4-H Club 1, 2; Student Council 2; Class Secretary 3; Glee Club 4; Majorette 3, 4

## PEGGY LEIGH CARTER

F.H.A. 3, 4; Library Assistant 3

## MARY ELLEN CAUDLE "Jake"

Tri-Hi-Y 2, 3; Spanish Club 3, 4, Chaplain 4; Glee Club 4; Intramurals 1, 2, 3, 4; ELK ANTLER Staff 4; ELK Staff 4

## BETTY LOIS CHIPMAN "Bet"

Intramurals 1, 2; F.H.A. 3, 4; D.E. Club 4

## WILLIAM DAVID CLEARY

Football 2; Track 2; D.O. Club 4; Science Club 3; Intramurals 1, 2, 3; Glee Club 3

## REBECCA LODEMIA COCKERHAM "Becky"

Basketball 3; Cheerleader 2, 3; D.E. Club 4, Treasurer 4; F.H.A. 3, Vice-President 3; Glee Club 3; Intramurals 1, 2, 3, 4; Tri-Hi-Y 2

## RONNIE GLENN COOK

Intramurals 1, 2, 3, 4; Football 1, 3, 4; Science Club 3, 4; ELK ANTLER Staff 4

## JANET LOUISE COUCH

Beta Club 3, 4; Cheerleader 2, 3; D.E. Club 4, Secretary 4; Intramurals 1, 2, 3

## LENA ROSE COUCH MOST INTELLIGENT

Beta Club 3, 4; Cheerleader 2, 3; Future Teachers of America 2, Program Chairman 2; Intramurals 1, 2, 3; Student Council 4; ELK ANTLER Staff 4

## BILLY GLENN DARNELL "Bill"

D.O. Club 3, 4

## JANICE EARLINE DARNELL "Jan"

Intramurals 1, 2; F.H.A. 3; D.E. Club 4

## LEONARD DALE DARNELL "Splinter"

Football 2, 3, 4; Intramurals 1; D.O. Club 4; 4-H Club 2; Glee Club 3

## MARGARET SHELDON DARNELL

Intramurals 1, 2; F.H.A. 3; D.E. Club 4

## MARIAN ETHEL DAVIS

Intramurals 2, 3; Latin Club 1, 2; Beta Club 3, 4; Tri-Hi-Y 1, 2, 3, 4, Treasurer 4, Blue Ridge Assembly 4, Interstate Tri-Hi-Y Conference 4; Cheerleader 2, 3; ELK ANTLER Staff 4; Class Play 4

## LORNA LU DICKSON

Latin Club 1, 2, Reporter 2; Tri-Hi-Y 1, 2, 3, Parliamentarian 2; Beta Club 3, 4; Glee Club 4; Intramurals 1, 2, 3, 4; Golf Team 1, 2; Class Poet 4; Class Play 3, 4



# Senior Statistics

**STEPHEN ERNEST EDWARDS** "Steve"

Glee Club 3, 4; Hi-Y 4; Science Club 2

**GALE DEAN EIDSON**

*MOST INTELLIGENT*

Student Council 3, 4, Treasurer 4; Class Marshal 3; Beta Club 3, 4, Vice-President 4; Monogram Club 2, 3, 4, President 4; Hi-Y 2, 3, 4, Chaplain 4; State Hi-Y Convention 2, Blue Ridge Assembly 2; Football 1, 2, 3, 4; Basketball 1, 2, 3, 4; Tennis 1, 2, 3, 4; State Tennis Tournament 2, 3, 4; Latin Club 1, 2, President 2; Class President 1; Band 1, 2; Intramurals 1, 2, 3, 4; Class Play 3, 4; Leaders Club 1, 2, President 2

**ROSS MAURICE FOX** "Fertilizer"

*MOST ATTRACTIVE*

Student Council 2; Monogram Club 2, 3, 4; Latin Club 1, 2; Football 1, 2, 3, 4; Track 2, 4; Baseball 2; Hi-Y 2, 3; Intramurals 1, 2, 3, 4

**NANCY EDWARDS FRANKLIN**

Class Secretary 4; Tri-Hi-Y 1, 2, 3, 4, Vice-President 2, President 4; Girls' State 3; Inter-Club Council 2; Blue Ridge Hi-Y Congress 4; Interstate Tri-Hi-Y Conference 4; Beta Club 3, 4, Chaplain 4; State Beta Club Convention 3, 4; Latin Club 1, 2; F.H.A. 2, 3, Treasurer 3; Monogram Club 3, 4; Cheerleader 1, 2, 3, 4; ELK Staff 4; ELK ANTLER Staff 4; Class Play 3, 4; Scouts 1, 3

**MARY MARGARET GENTRY**

*MOST ATTRACTIVE*

Monogram Club 4; Spanish Club 3; Tri-Hi-Y 4; D.E. Club 4; Cheerleader 2, 3, 4, Chief 4; Homecoming Attendant 3; Homecoming Queen 4; Intramurals 1, 2, 3, 4

**JAMES LEE GRAHAM**

Beta Club 3, 4; Monogram Club 3, 4; Leaders Club 2, 3; Hi-Y 3, 4; Latin Club 1, 2; Baseball 1, 2, 3, 4; Science Club 3; Marshal 3; Scouts 1; J.V. Basketball 2

**WILLIAM EDWARDS HALL** "Bill"

Beta Club 3, 4; Science Club 2; Hi-Y 2, 3; Intramurals 2; Track 4

**FRED DOUGLAS HARMON**

4-H Club 1; Science Club 3; Monogram Club 3; D.O. Club 4; Track 1, 2, 3, 4

**JERRY GWYN HARRIS** "Spider"

Monogram Club 4; Hi-Y 2, 3, 4; Science Club 2, 3; Junior Leaders Club 1; Senior Leaders Club 2; Football 1, 2, 3, 4; Wrestling 3; Intramurals 1, 2, 3; Class Giftorian 4

**LEONA ANN HARRIS**

F.H.A. 2, 3, 4, Secretary 4; D.O. Club 4, Secretary 4; Intramurals 1, 2, 3

**WILLIAM ROBERT HARTNESS** "Bob"

*BEST PERSONALITY*

Class Marshal 3; Class Vice-President 1, 2, 4; Beta Club 3, 4; Student Council 1; Tennis 1, 2, 3, 4; Monogram Club 4; Hi-Y 2, 3, 4, Secretary 4; Junior Leaders Club 1; Senior Leaders Club 2; Science Club 2, 3, President 3; Latin Club 1, 2; Class Play 3; Representative to State Tennis Tournament 2, 3, 4; Intramurals 1, 2, 3, 4

**CAROLYN ELIZABETH HINSON**

F.H.A. 2,3,4, Reporter 4; Intramurals 1; D.E. Club 4

**FRANKLIN AMBROSE HINSON**

4-H Club 1, 2; D.O. Club 3, 4; Intramurals 1, 2

**SIGMOND WALLACE HOLCOMB, JR.** "Wally"

*MOST ATHLETIC*

Football 1, 2, 3, 4, Tri-Captain 4; Basketball 3, 4; Tennis 2, 3, 4; Track 1; Monogram Club 3, 4, Vice-President 4; Class Vice-President 3; Senior Leaders Club 2, 3; Junior Leaders Club 1; Band 1, 2; Intramurals 1, 2, 3, 4; Hi-Y 2, 3

**WILLIAM KENT HOOPER** "Tex," "Bill"

Football 1, 2, 4; Monogram Club 4; Intramurals 1, 2, 3, 4; Hi-Y 2; Glade Valley High 3; Class Play 4

**NEILS-JRN JACOBSEN**

Central High School, Broger, Denmark; Student Council 4; Monogram Club 4; Hi-Y 4

**JAMES LEON LAWRENCE** "Jimmy"

Baseball 2, 3, 4; Beta Club 3, 4; Student Council 4; Latin Club 1, 2; Hi-Y 3, 4; Science Club 2, 3; Monogram Club 4; Intramurals 1, 2, 3, 4

**JOYE ELIZABETH LAWRENCE**

F.S.A. 2, 3; D.E. Club 4, Vice-President 4; Intramurals 1, 2

**LAWRENCE WILSON LAXTON, JR.** "Tiger"

Delegate to Boys' State 3; Class Secretary 2; Class Treasurer 4; Beta Club 3, 4; Latin Club 1, 2; Monogram Club 3, 4; Senior Leaders Club 2, Secretary 2; Junior Leaders Club 1; Football 2, 3, 4; Tennis 3, 4; Wrestling 3; Band 1, 2; Intramurals 1, 2, 3, 4; Class Play 3; Hi-Y 2, 3, 4

**PATRICIA LEWIS** "Pat"

Tri-Hi-Y 1, 2, 3, 4; Parliamentarian 4; Inter-Club Council 4; Science Club 3; Intramurals 1, 2, 3, 4; Basketball Manager 3; ELK ANTLER Staff 3, 4; Glee Club 4; Office Assistant 4

**NOAH VERNON LUFFMAN**

Spanish Club 3; D.E. Club 4

**VICKI GWEN MAYBERRY**

*BEST PERSONALITY*

Beta Club 3, 4; Tri-Hi-Y 1, 2, 3, 4; Beta Club Convention 4; Latin Club 1, 2, Secretary 2; Science Club 3, Secretary 3; Spanish Club 4, Vice-President 4; Basketball 2; Class Play 3; Intramurals 1, 2, 3, 4; Homecoming Queen 3; ELK ANTLER Staff 4; ELK Staff 4

**JO ANN MOUNCE**

D.E. Club 4; F.H.A. Club 3, 4; President 4; 4-H Club 1, 2; F.S.A. Club 3; Basketball 3; Intramurals 1, 2, 3

**TONY EDWARD NEWMAN**

Intramurals 2; Glee Club 3; D.E. Club 4



# Senior Statistics

## LARRY DAVID NIXON

### MOST LIKELY TO SUCCEED

Leaders Club 1, 2, Chaplain 2; Band 1, 2; Intramurals 1, 2, 3, 4; Student Council 1, 4, Parliamentarian 4; Latin Club 1, 2, Treasurer 2; Football 1, 3, 4; Monogram Club 4; Class President 2; Hi-Y 2, 3, 4, Treasurer 4; Inter-Club Council 4; Tennis 2, 3, 4; Class Prophet 4; Marshal 3; Beta Club 3, 4, President 4; Science Club 3, Treasurer 3; Beta Club Convention 4

## HAROLD EUGENE PARDUE

Traphill High School 1, 2, 3; D.O. Club 4

## MARY JANE PREVETTE

Tri-Hi-Y 1, 2, 3; Library Assistant 1; Latin Club 1; Intramurals 1, 2, 3

## ANITA ELIZABETH REICHARD

### MOST POPULAR

Homecoming Attendant 4; Monogram Club 3, 4; Tri-Hi-Y 1, 2, 3, 4; Inter-Club Council 2, Treasurer 2, Reporter 3; Latin Club 1, 2; Spanish Club 4; Dairy Princess 3; Tennis Team 1; Intramurals 1, 2, 3, 4; Cheerleader 1, 2, 3, 4; ELK ANTLER Staff 4; ELK Staff 4

## CLAUDE FRANKLIN ROYALL

Class Play 4; Hi-Y 2, 3, 4, Vice-President 4; Beta Club 3, 4, Treasurer 4; Intramurals 1, 2, 3; Blue Ridge Assembly 3; Track 1; Baseball 4; Bus Driver 4; ELK ANTLER Staff 4; ELK Staff 4

## JO ANN SAYLOR "Jo"

### WITTIEST

Tri-Hi-Y 1, 2, 3, 4, Secretary 4, Reporter 1; Inter-Club Council 1, 4; Office Assistant 4; F.S.A. 4; Monogram Club 3, 4; Cheerleader 1, 2, 3; Latin Club 1, 2; Intramurals 1, 2, 3, 4; Tennis Team 1; Class Play 3, 4; Library Assistant 1; Magazine Sales Winner 3; ELK ANTLER Staff 4

## LAURA RUTH SEARS

Tri-Hi-Y 1, 2, 3, 4, Secretary 2, Vice-President 3; Blue Ridge Assembly 2, 3; Delegate to Inter-State Tri-Hi-Y Conference 3, 4, Treasurer 4; Latin Club 1, 2, Program Chairman 1; Spanish Club 4, Secretary 4; Intramurals 2, 3; ELK Staff 4

## JAMES HENRY SHORE, JR. "Scout"

### MOST POPULAR

Student Council 2, 3, 4, Parliamentarian 2, Vice-President 3, President 4; Class President 3; Beta Club 3, 4; Monogram Club 4, Chaplain; Latin Club 1, 2, Vice-President 2; Football 3, 4; Basketball 3, 4; Tennis 2, 3, 4; Band 1, 2; Chief Marshal 3; NCSCC 3, 4; WDNCSCC 2, 3; Blue Ridge Assembly 2; Science Club 3; Track 1; Inter-Club Council 3; Intramurals 1, 2; Leaders Club 1, 2; Delegate to Boys' State 3; Class Play 3

## JUDY SILVERMAN

Beta Club 3, 4; Beta Convention 4; Monogram Club 3, 4; Cheerleader 1, 2, 3; Tri-Hi-Y 1, 2, 3, 4, Parliamentarian 3; Latin Club 1, 2; Intramurals 1, 2, 3, 4; ELK ANTLER Staff 4

## DENNIS SMOOT

Beta Club 3, 4; Spanish Club 3; Science Club 3

## GUY LEIGHTON SNOW

Student Council 3, 4; NCSCC 3; Beta Club 3, 4; Hi-Y 2, 3; Chaplain 3; President 4; Spanish Club 3, 4; Beta Club Convention 3, 4; Monogram Club 2, 3, 4; Band 1; Blue Ridge Assembly 3, 4; Inter-Club Council 3, 4; Delegate to Inter-State Hi-Y Conference 2, 3, 4; Bus Driver 4; Class Play 3

## JUNE FRANKLIN SOFLEY "Dootsey"

Beta Club 3, 4; Spanish Club 3, 4; Glee Club 4; Class Play 4

## RAMA FAY SOUTHARD

Intramurals 1, 2; F.S.A. 2, 3, 4, Program Chairman 3, President 4; D.E. Club 3, 4, Program Chairman 4

## HELEN HUDSPETH SPARKS

Tri-Hi-Y 1, 2, 3; 4-H Club 1; F.S.A. 3; Intramurals 1, 2, 3; D.E. Club 4; ELK ANTLER Staff 3

## JAY CLYDE STUART "Bud"

Class Treasurer 1, 2; Beta Club 3, 4; Hi-Y 2, 3, 4; Science Club 2, 3, Vice-President 3; Monogram Club 4; Football 1, 2, 3, 4; Latin Club 1, 2; Beta Club Convention 4

## TONY HAROLD SWAIM "Dee"

J. V. Football 1; Science Club 3, 4; Monogram Club 4; Latin Club 1, 2; D.O. Club 1, 2;

## ROBERT TATUM

Monogram Club 3, 4; Science Club 2; Football 1, 2, 3; D.O. Club 4; Intramurals 1, 2, 3; J.V. Basketball 1

## MARY GENTRY TRANSOU

4-H Club 1, 2; F.H.A. Club 1; Tri-Hi-Y 4; F.S.A. 2, 3, 4, Chaplain 3, 4; Library Assistant 2; Intramurals 2, 3; ELK ANTLER Staff 4

## BETTY LOU TURNER

Spanish Club 3; Library Assistant 4; Intramurals 1, 2; Glee Club 4

## CARL DAVID TURNER

D.E. Club 4

## JAMES HENRY WEST "Jimmy"

Intramurals 2, 3, 4; Football 3, 4; Track 3, 4; Basketball 4; Spanish Club 3, 4; Science Club 4; Hi-Y 4; Glee Club 4; Class Play 4

## GAIL JEANNETTE WHITE

Spanish Club 3; Glee Club 4; Intramurals 1; Science Club 4; ELK ANTLER Staff 4

## EMILY JANE WOOTEN

Basketball 1, 3, 4; Tri-Hi-Y 1, 2, 3, 4; Office Assistant 4; F.S.A. 4; Intramurals 1, 2, 3, 4; Latin Club 1, 2; Monogram Club 4; Science Club 3; Class Plays 3, 4; Tennis 1; ELK ANTLER Staff 4

## CLASS COLORS:

*Blue and White*

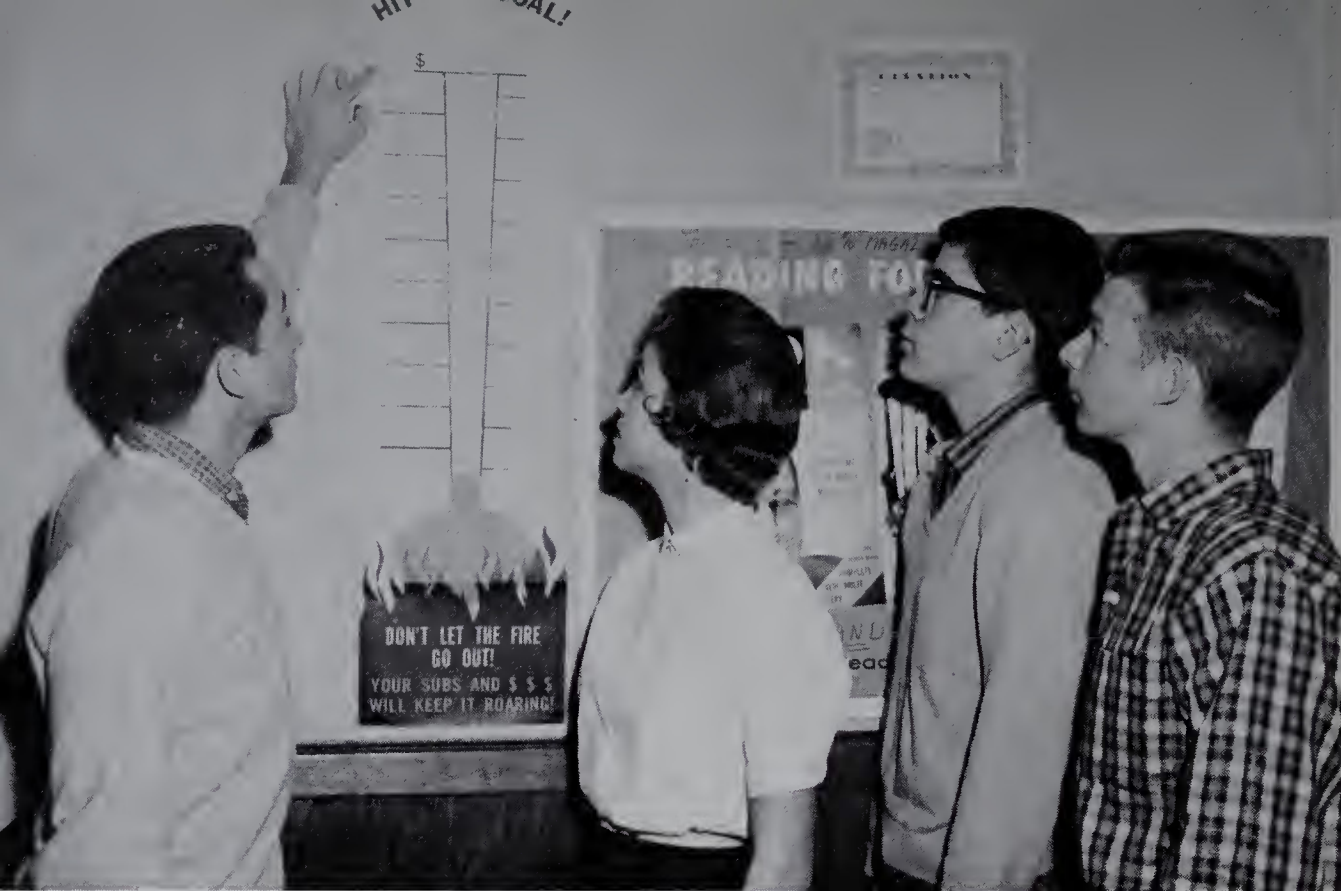
## CLASS FLOWER:

*Magnolia*

## CLASS MOTTO:

*"Ever onward, never backward"*





# J u n i o r s

## JUNIOR OFFICERS:

*President*-----Norman Graham  
*Vice-President*-----Wesley Smitherman  
*Secretary*-----Wanda Blevins  
*Treasurer*-----Benny Hampton



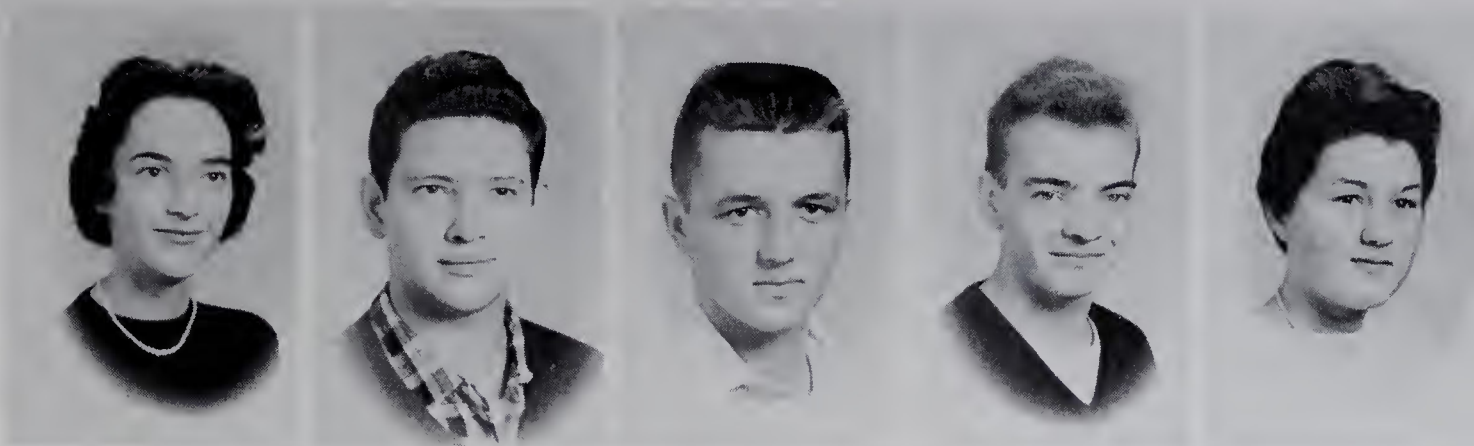
Belvin Adams  
 Nancy Adams  
 Pat Allen  
 Mary Etta Armfield  
 Mary Lee Benge

Virginia Beulin  
 Wanda Blevins  
 Ted Brinegar  
 Paulette Byrd  
 Wallace Byrd

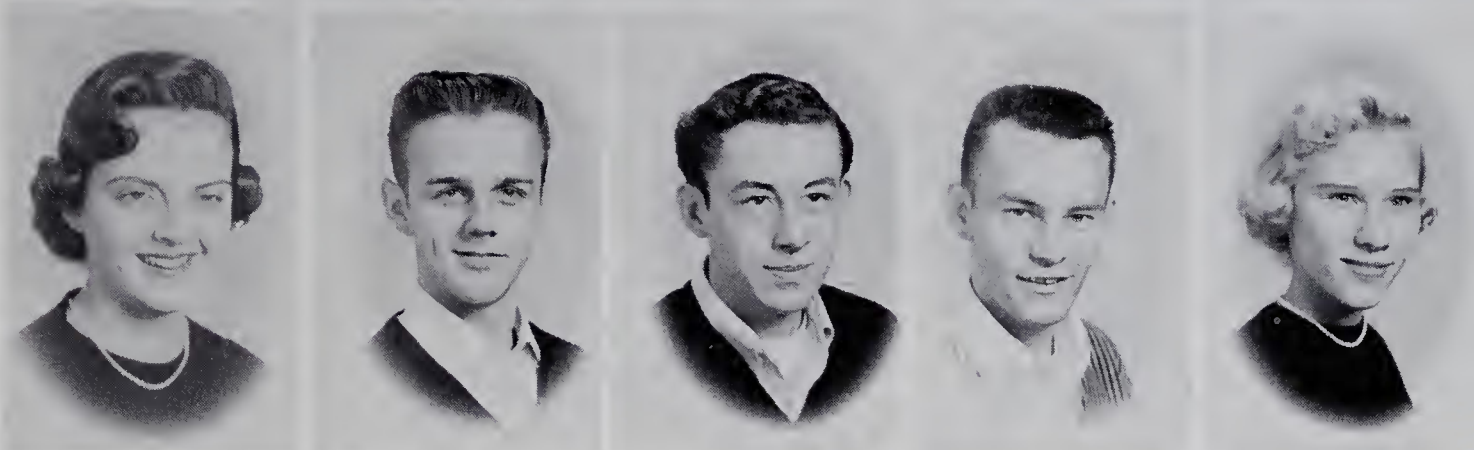


# *Juniors*

Savanna Carrico  
David Caudill  
Bennie Caudle  
James Chatman  
Dorothy Chipman



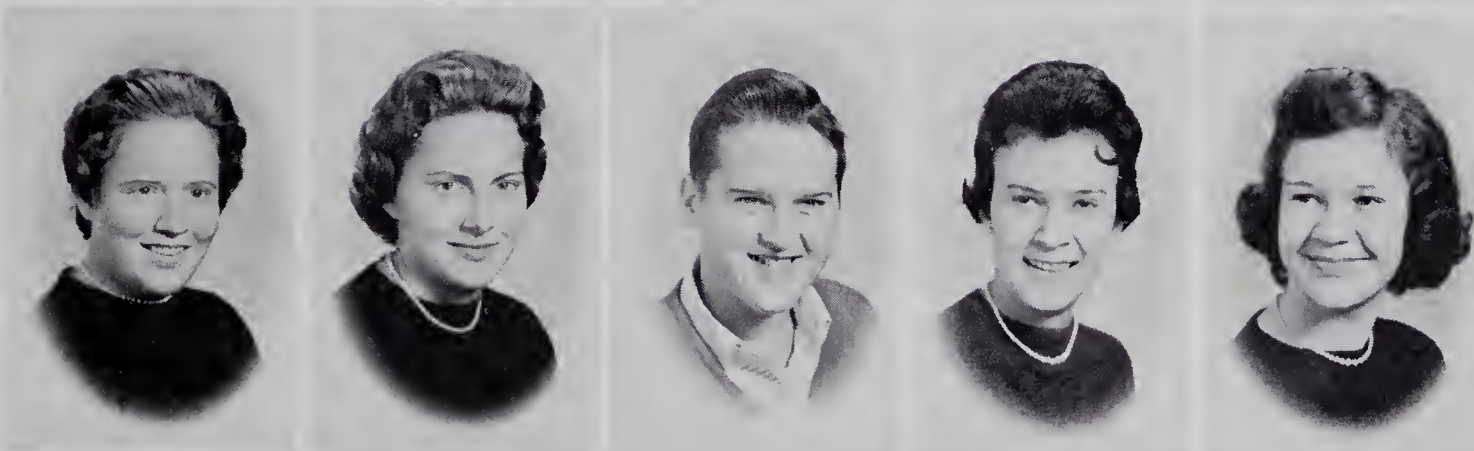
Ellen Cooke  
Donald Couch  
Kenneth Couch  
Tommy Couch  
Alice Cranford



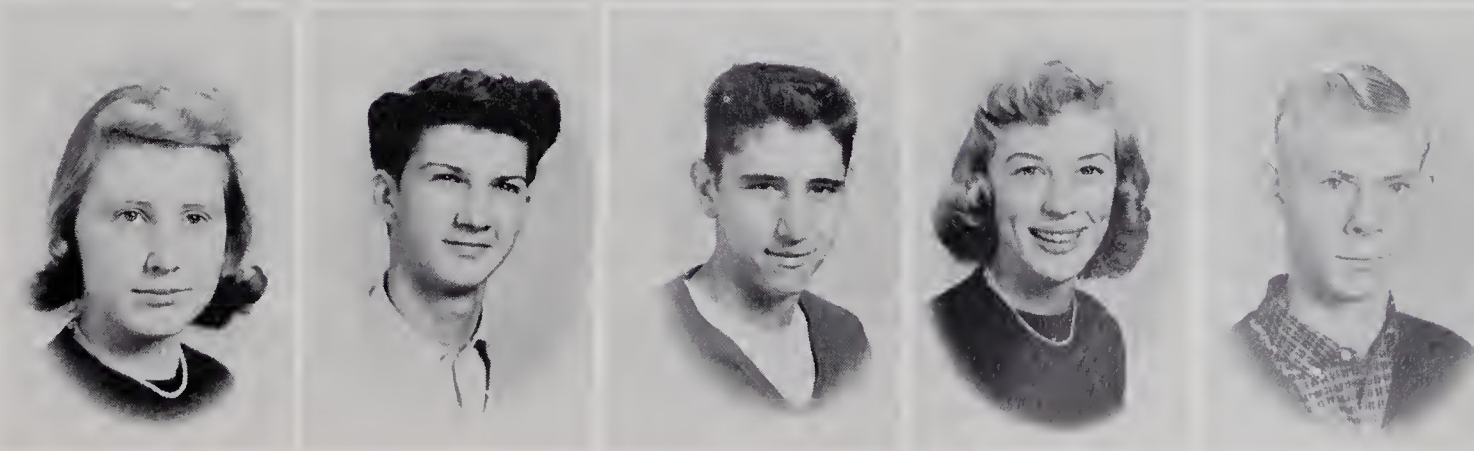
Carl Darnell  
Larry Darnell  
Mildred Darnell  
Joyce Daye  
Tom Dillon



Virginia Dula  
Linda Eidson  
Dickie Evans  
Margaret Felts  
Kay Francis

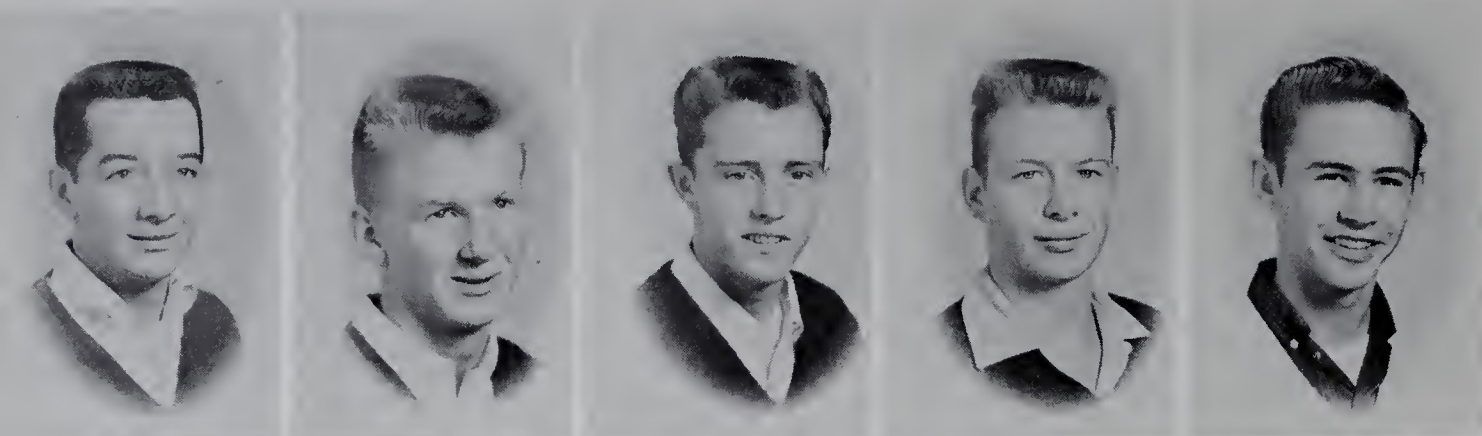


Elizabeth Freshour  
Jerry Gaither  
Frank Gentry  
Mae Gentry  
Gwyn Gilliam

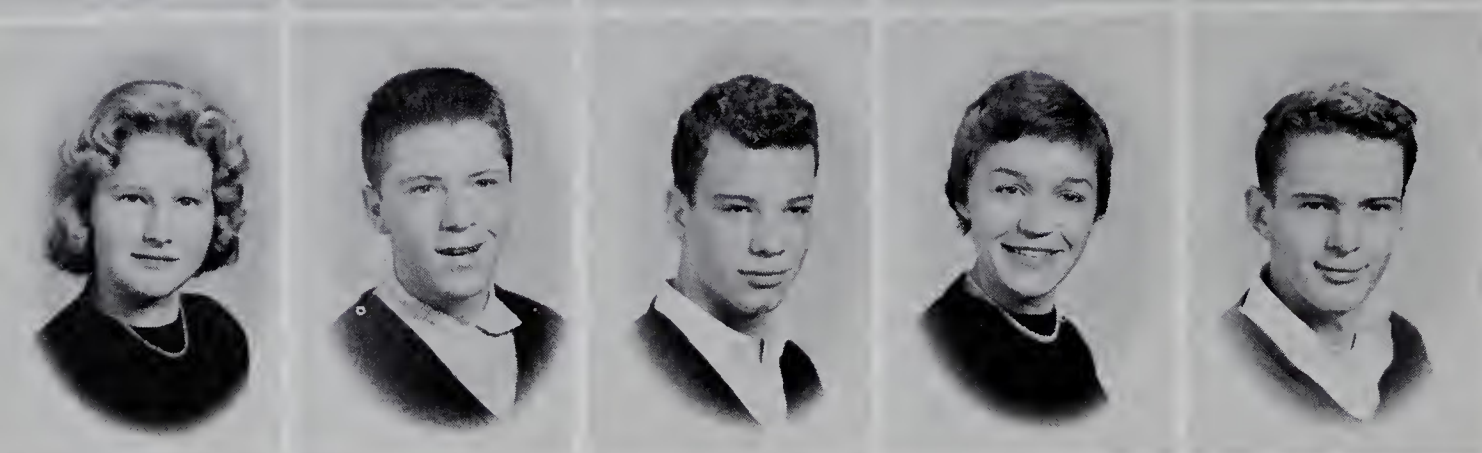




# *Juniors*



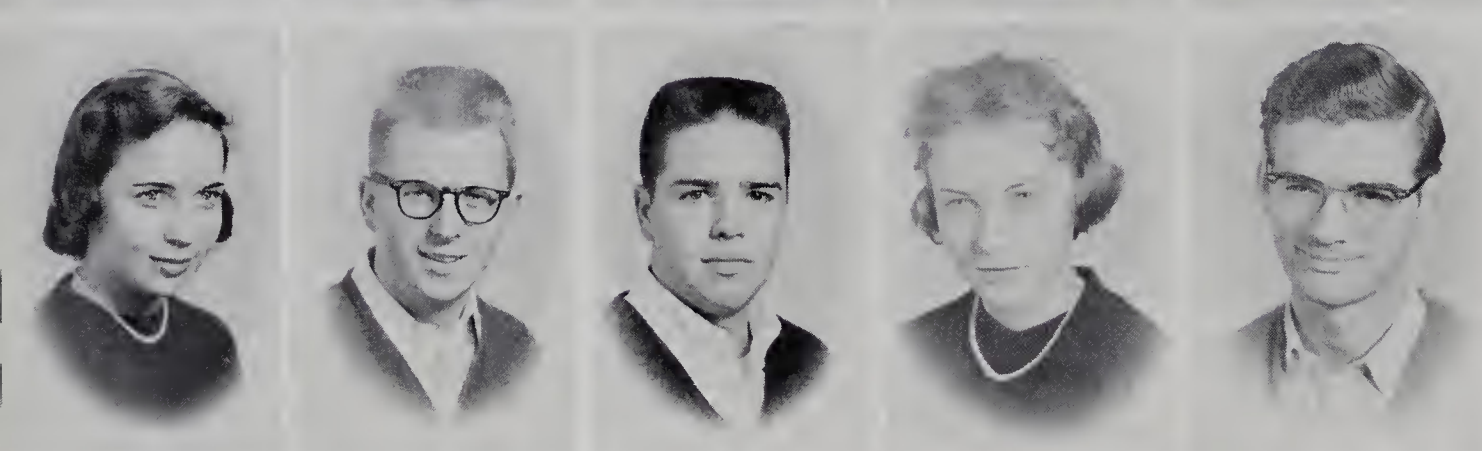
Norman Graham  
Charles Gregory  
Sam Guyer  
Benny Hampton  
James Hanks



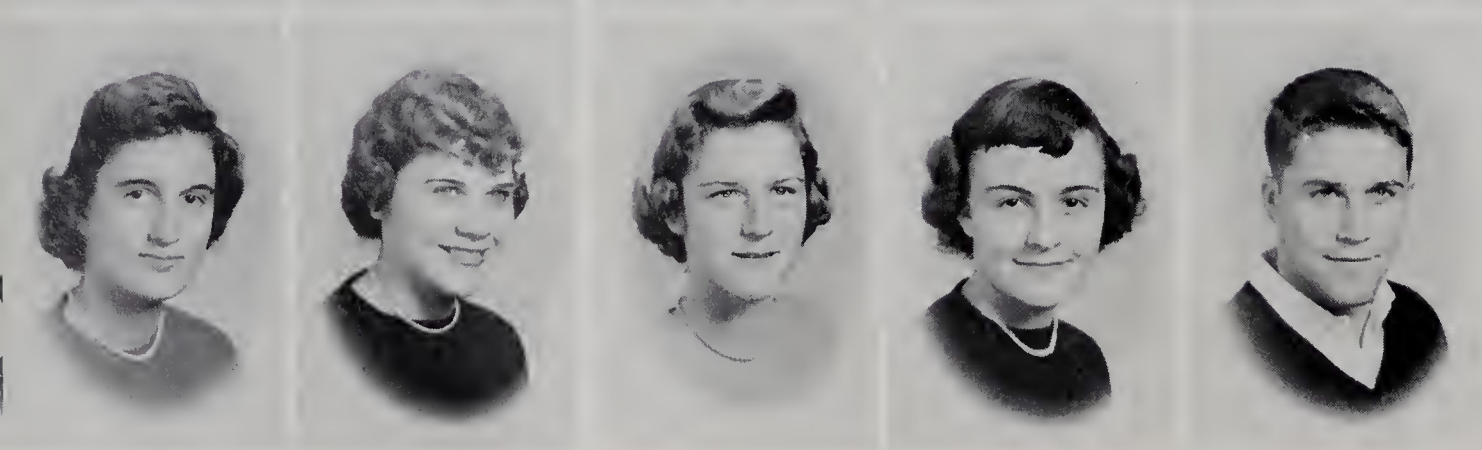
Ann Harpe  
Charles Harris  
George Hart  
Peggy Haynes  
David Helton



Patsy Hemric  
Sam Hinson  
Phyllis Irion  
Wilda Jackson  
Lanny Johnson



Mary Ann Johnson  
Bobby Lankford  
Allen Laxton  
Kay Long  
Wendell Lowery

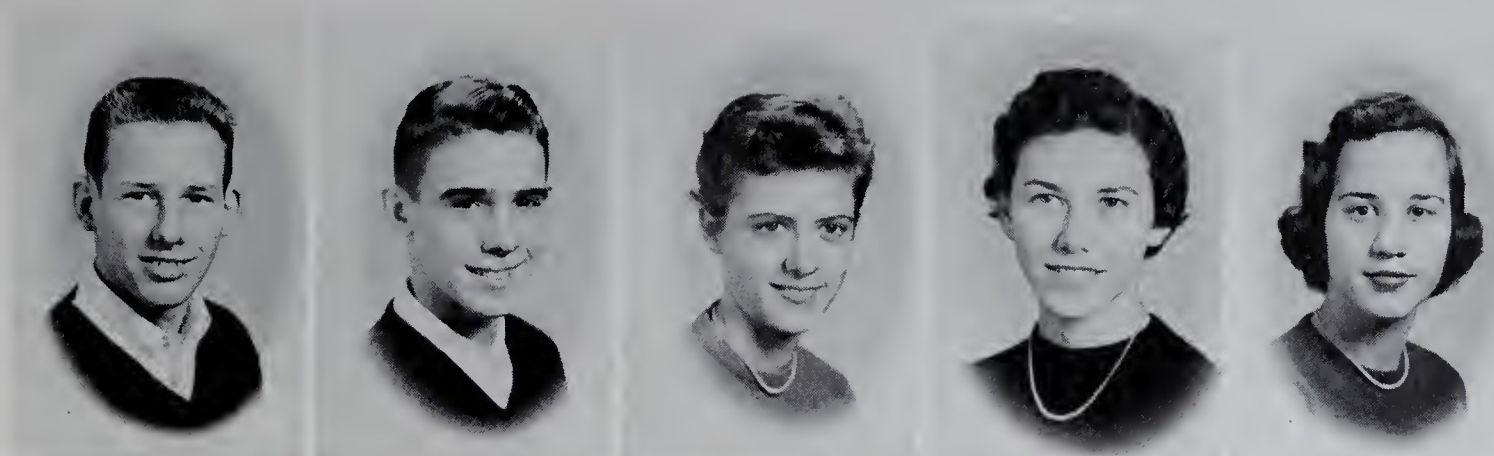


Johnsy Martin  
Ruby Jean Mastin  
Betty Frances Meed  
Mary Lou Meed  
Will Newman



# *Juniors*

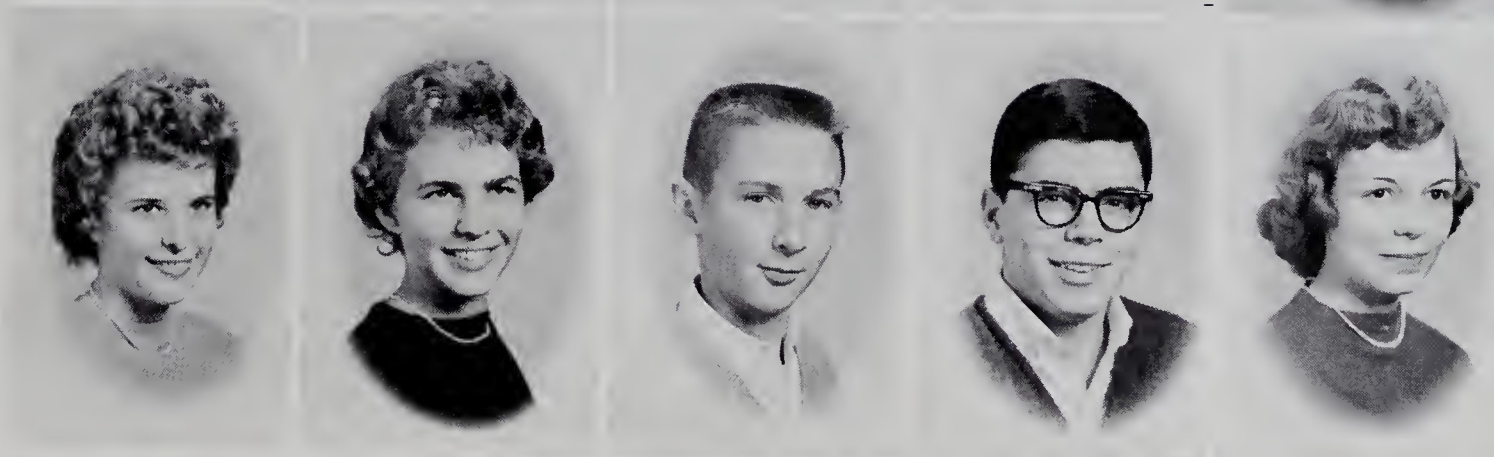
Tommy Osborne  
Garland Pardue  
Margaret Parrot  
Blanche Poplin  
Jane Redmon



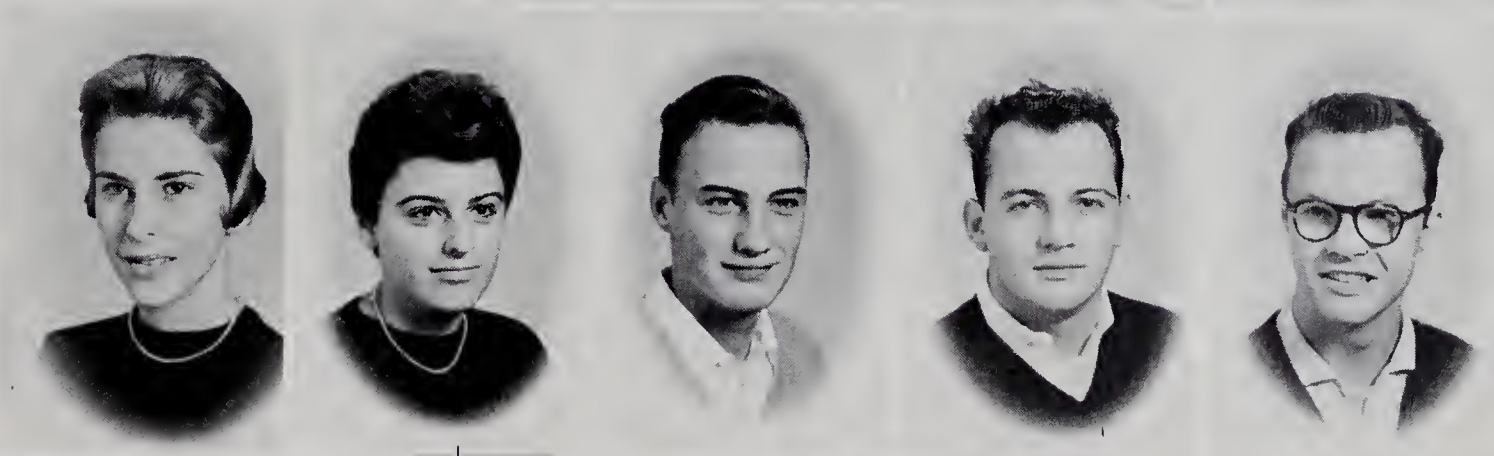
Sara Redmon  
Charles Rhyne  
Sterling Sagar  
Wanda Settle  
Sam Shore



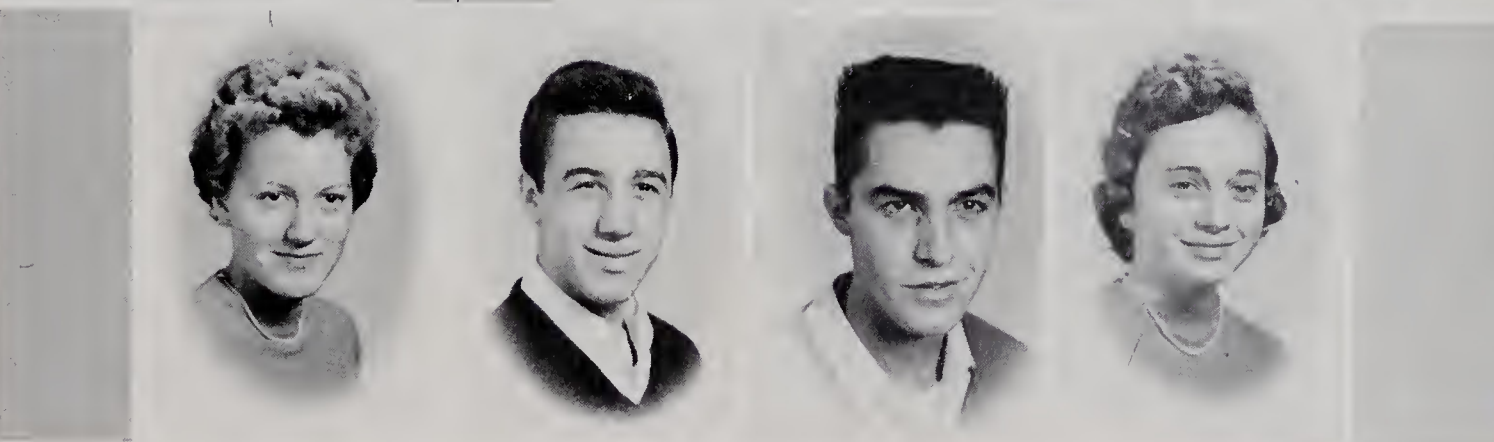
Jackie Simmons  
Rachel Sloop  
Sammy Sloop  
Wesley Smitherman  
Lana Smoot



Bunny J. Thompson  
Lynda Tinsley  
Jimmie Uldrick  
Jerry Vestal  
Jack Wampler



Jerry Weatherman  
Johnny Welborn  
Jerry Wilmoth  
Carol Yarboro



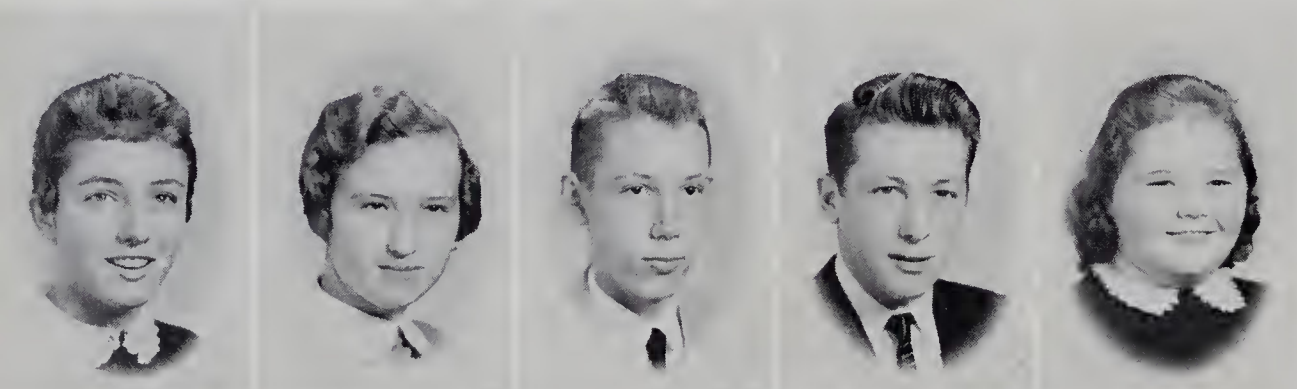




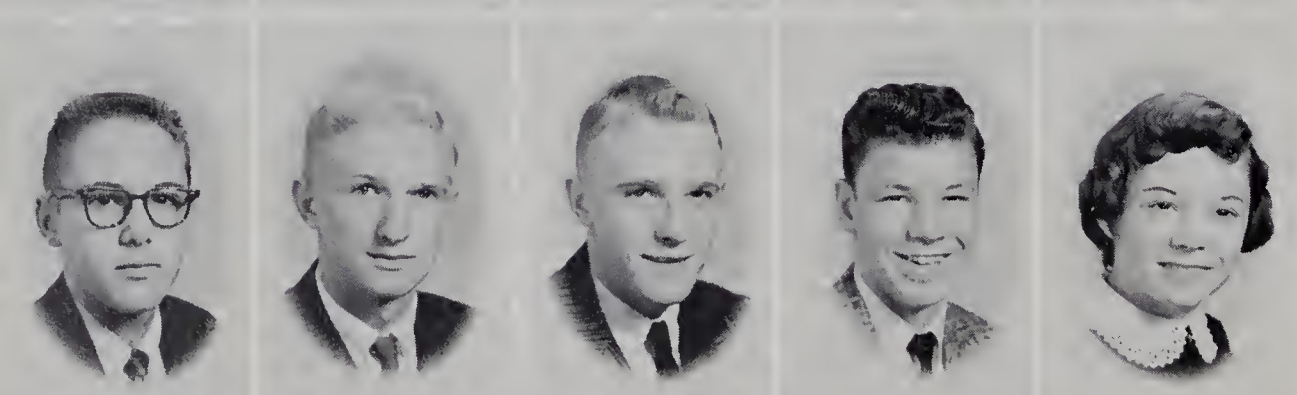
# Sophomores

## SOPHOMORE CLASS OFFICERS

*President*-----Tommy Davis  
*Vice-President*-----Ronnie Hooper  
*Secretary*-----Lorene Key  
*Treasurer*-----Janet Burcham



Nancy Baker  
 Nancy Baldwin  
 Clyde Ball  
 David Balzer  
 Jackie Bates



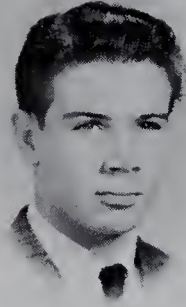
Sandy Biggs  
 Johnny Blackburn  
 Kenneth Blackburn  
 Steve Blackburn  
 Ruth Bowers



Kenneth Brandon  
 Betty Ruth Brown  
 Janet Burcham  
 Garvey Burchette  
 Gertie Burchette



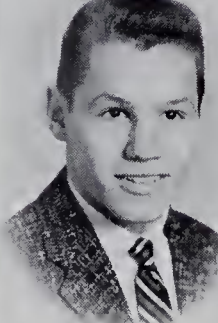
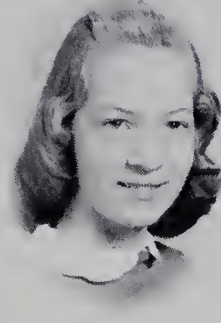
Toby Butner  
 Stephen Caudill  
 Clara Belle Causey  
 Dorothy Chipman  
 Barbara Cockerham



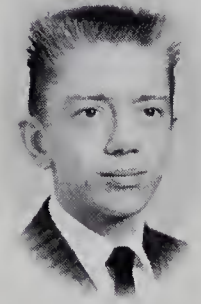
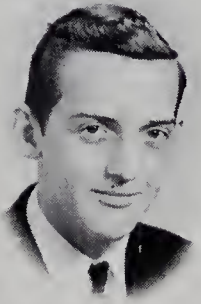
Cathy Cockerham  
 Linda Cockerham  
 Sharon Cockerham  
 Mary Elizabeth Collins  
 Nancy Collins



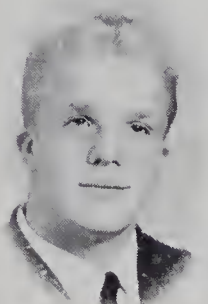
Brenda Cothren  
 Mary Ellen Crater  
 Sharron Crummer  
 Kenneth Darnell  
 Tommy Davis



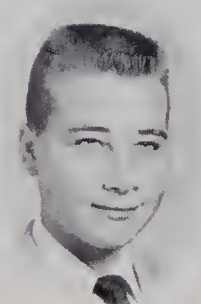
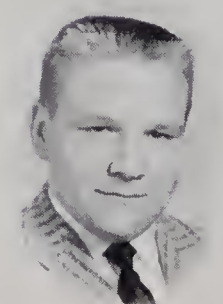
Kent Eidson  
 Billie Jean Elderton  
 Butch Eller  
 Sally Evans  
 Jane Franklin



Becky Freeman  
 Jane Gambill  
 Marie Gambill  
 Coney Gentry  
 Rebekah Gentry

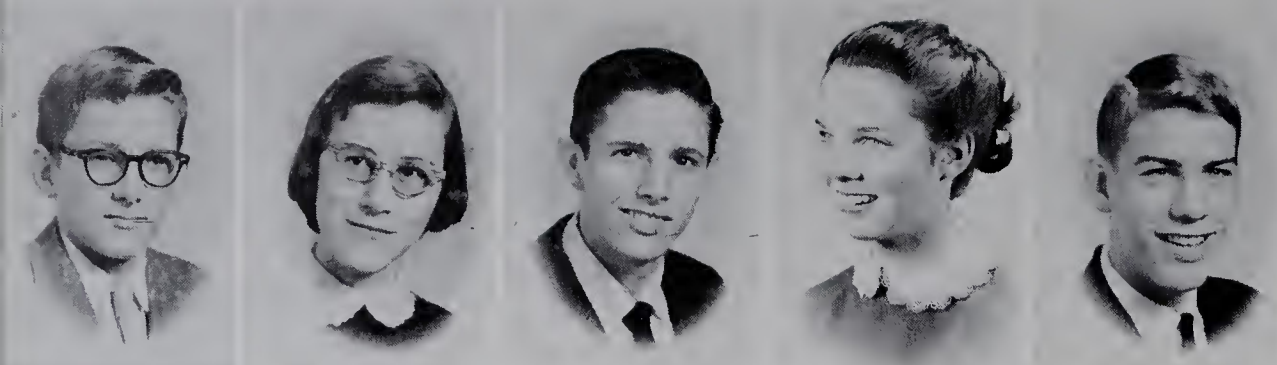


Sudie Gentry  
 Trent Gilmore  
 Jimmy Greenwood  
 Bud Hall  
 Frances Hanks

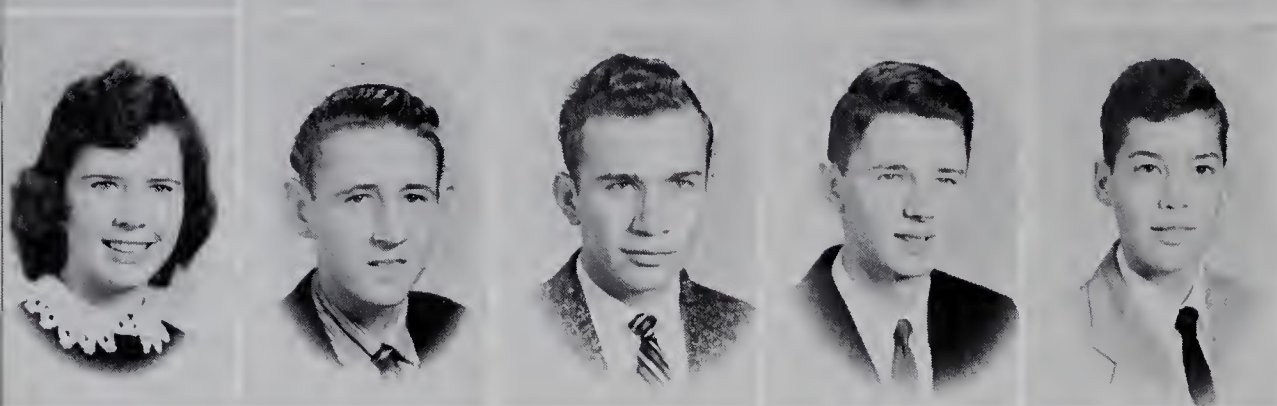




# Sophomores



Ben Harding  
Agatha Harris  
Gene Harris  
Kate Harris  
Ricky Harris



Pat Hayes  
Jerry Hemric  
Sonny Hemric  
Rick Henderson  
Keith Hilliard



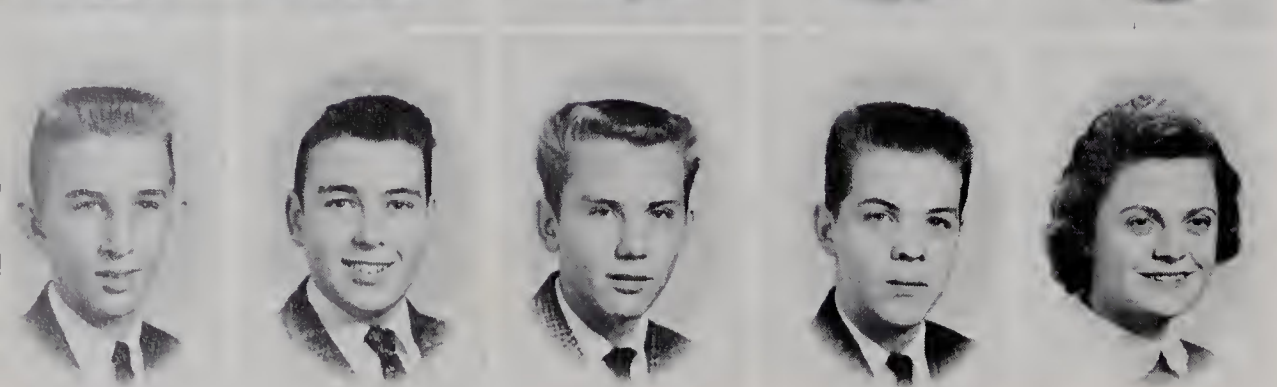
Johnny Holbrook  
Danny Holcomb  
Eileen Holcomb  
Ronnie Hooper  
Lind Howland



Evelyn Hudspeth  
Peggy Johnson  
Patsy Kennedy  
Lorene Key  
Michael Lawrence



Nellie Jo Lawrence  
Claudia Layell  
David Layell  
Judy McCoin  
Peggy Macemore

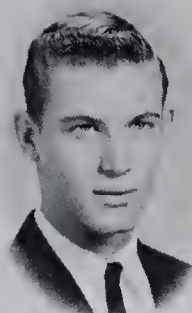
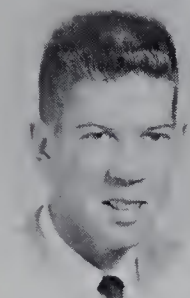


Buck Martin  
Kenneth Martin  
Eddie Mastin  
Larry Mastin  
Jimmie Ann Miller

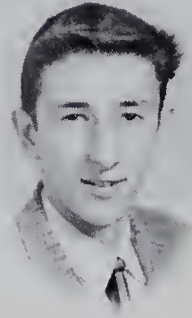
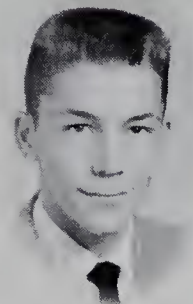


# Sophomores

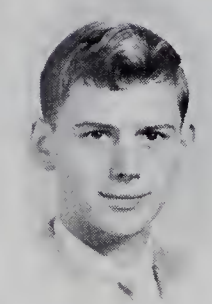
Louise Moncus  
Gayle Money  
Dallas Nance  
Yvonne Normon  
Billy Overcash



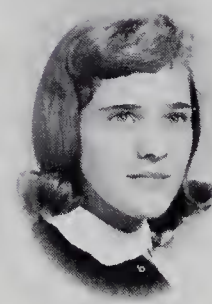
Jerry Park  
Brenda Parks  
Linda Parker  
Martha Pearson  
Mike Phillips



Janet Poplin  
Bertha Pruitt  
Vernon Reinhardt  
Jay Royall  
Marcella Sears



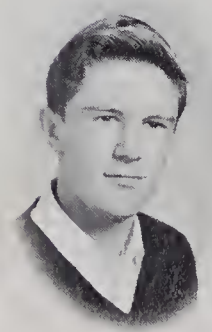
Jo Ann Sexton  
Bonnie Shepherd  
Lynn Shepherd  
Bonnie Shore  
Sara Stockton



Curtis Teague  
Pam Thomas  
Ronnie Transou  
Janet Vestal  
Frances Walker



Billy Waring  
Linda Wiles  
Charles York



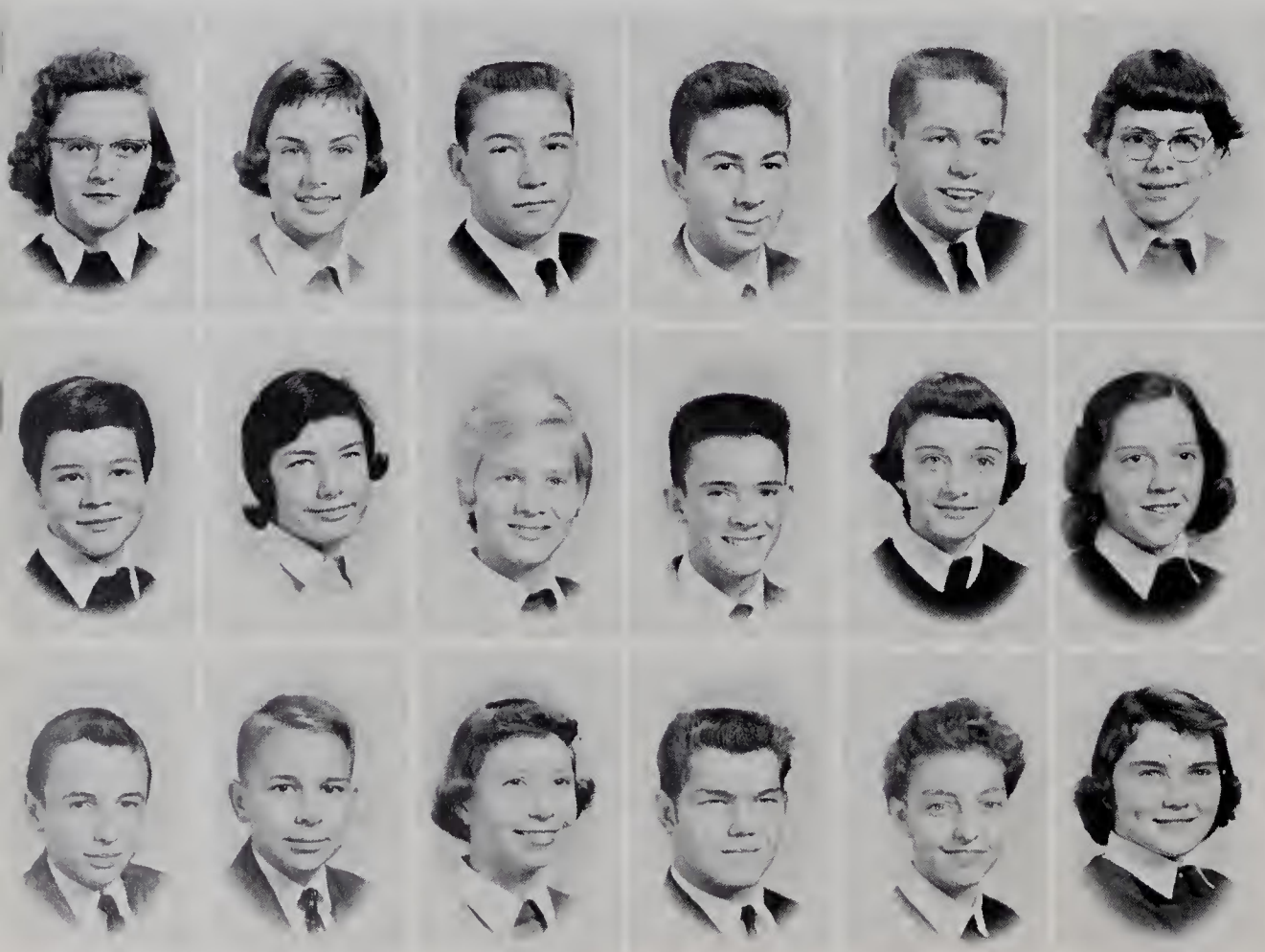




# *F r e s h m e n*

## FRESHMAN CLASS OFFICERS

*President*-----Steve Holloway  
*Vice-President*-----Joe Newman  
*Secretary*-----Walter Metz  
*Treasurer*-----Sammy McCain



Alta Barker  
Molly Barker  
David Billings  
Joe Bivins  
Jerry Blackburn  
Barbara Blevins

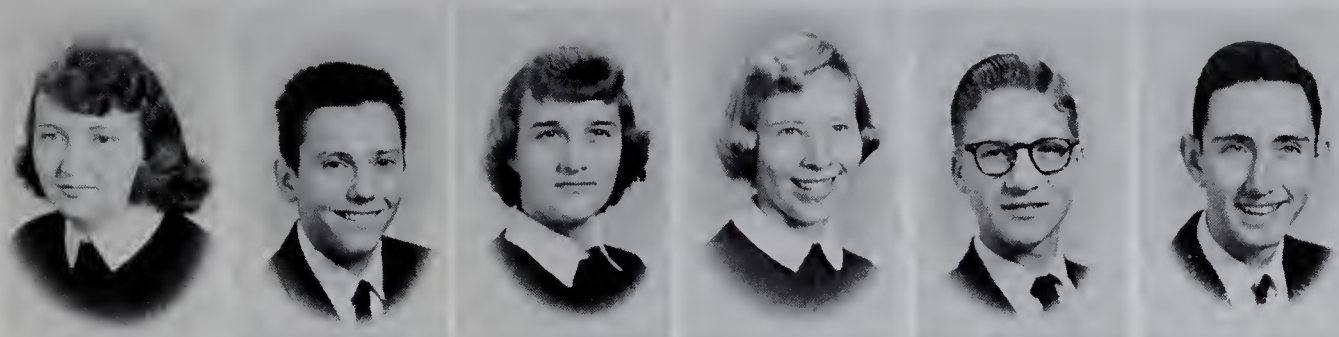
Hazel Bowers  
Shirley Brian  
Rita Brinegar  
Maurice Bumgarner  
Alice Calhoun  
Linda Carlton

Michael Carroll  
George Carson  
Ann Carter  
Bobby Carter  
Geraldine Carter  
Hilda Gay Carter

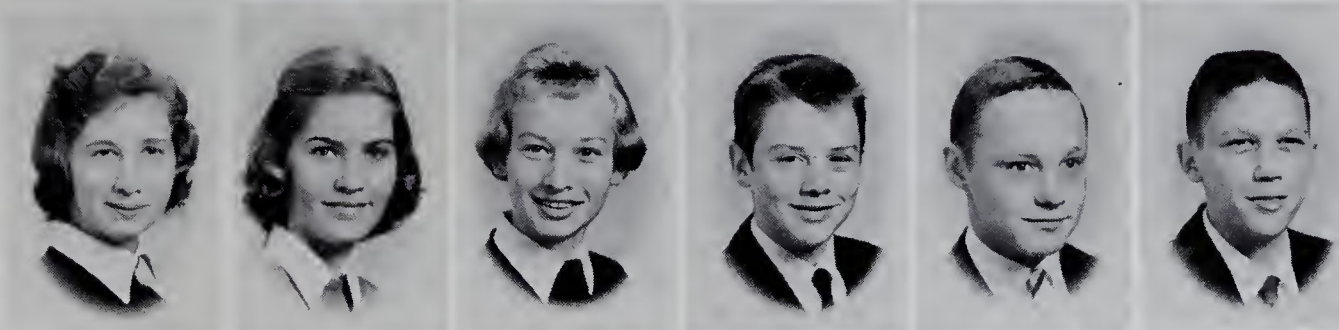


# Freshmen

Nora Lou Cave  
Buddy Chappell  
Betty Collins  
Jane Cranford  
Arthur Crummer  
Frankie Curtis



Carol Darnell  
Linda Darnell  
Patsy Darnell  
Reggie Darnell  
Robert Dillon  
Johnny Dockery



Alma Eldridge  
Betsy Eldridge  
Johnny Ford  
Jo Ann Foster  
Steve Freeman  
Patsy Gilliam



Joan Greenwood  
Margaret Gregory  
Ronnie Griggs  
Carolyn Hampton  
Larry Hanks  
Judy Harris



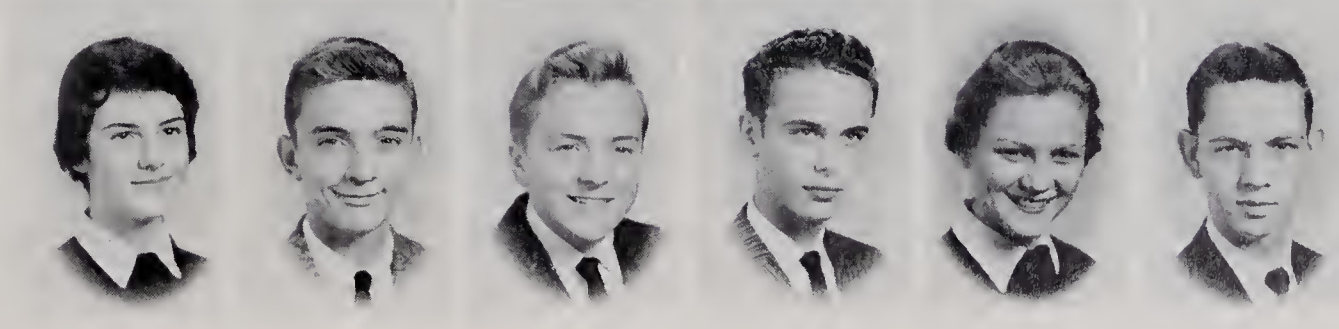
Seth Harris  
Annette Hayes  
Hilda Gay Hemric  
Ray Hinson  
Jerrell Holloway  
Steve Holloway



Anne Howland  
Katie Lee Huff  
Andrew Jackson  
Penny Jackson  
Gary Jennings  
Harry Jennings



Vivian Johnston  
Dale Jordan  
Barry Lankford  
Ronnie Long  
Pat Lyon  
Sammy McCoin





# Freshmen



Steve Martin  
Sara Mathis  
Walter Metz  
Jimmy Nail  
Avery Neaves  
Joe Newman

Martha Pardue  
Gabriella Parks  
Sue Ann Pennell  
Billy Phillips  
Edgar Royall  
Ann Sagar

Gary Salley  
Linda Scott  
Ronald Scronce  
Anita Shore  
Betty Ann Sloop  
Emilie Smoot

Katie Spann  
Betty Sprinkle  
Larry Stewart  
Pike Sullivan  
Erwin Swaim  
Susan Taylor

Carole Teague  
Genevieve Teague  
Nancy Tilly  
Constance Triplette  
Carolyn Walters  
Ann Wampler

Betty Jane Weaver  
Willie Mae Welborn  
Larry West  
O. W. White  
Patsy White  
Junior Wilmoth

Betty Windsor  
Jerry Wood  
Joe Wood  
Nancy Carol Wright





# E i g h t h G r a d e

## EIGHTH GRADE CLASS OFFICERS

President\_\_\_\_\_Mary Alice Fox  
 Vice-President\_\_\_\_\_Bill Blackburn  
 Secretary\_\_\_\_\_Joe Brown  
 Treasurer\_\_\_\_\_Jeanette Mitchell



Judy Adams  
 Barbara Anderson  
 Bill Blackburn  
 Jack Blackburn  
 Jerry Blackburn  
 Joe Brown

Johnsie Brown  
 Douglas Browne  
 Hazel Burcham  
 Ruth Burgess  
 Dan Calhoun  
 Kay Caudle

Larry Caudle  
 Lola Chipman  
 Miles Church  
 Richard Cockerham  
 Katie Collins  
 Patty Cummings

Sarah Davis  
 Ann Daye  
 Susan Daye  
 Caroline Dillon  
 Polly Eller  
 Wayne Foreman

Mary Alice Fox  
 Eric Freed  
 Hack Frye  
 Bonnie Gambill  
 Charles Gentry  
 Sharon Gentry



# *Eighth Grade*

Judy Gilmore  
Patsy Griggs  
Johnny Guyer  
Dwayne Hampton  
Sylvia Hanks  
Henry Harpe

Meg Harris  
Tommy Hemric  
Tommy Higgins  
Norris Holbrook  
Ronnie Holbrook  
Brenda Key

Linda Lanning  
Jackie Lawrence  
Pat Long  
Ray McCain  
Freddie Mastin  
Phyllis Mauldin

Jeanette Mitchell  
Carlie Mounce  
Earl Mounce  
Nancy Mounce  
Elizabeth Nance  
Melba Nance

Miriam Nicks  
Clayton Pardue  
Kenneth Pardue  
Anne Plaster  
Jimmy Poplin  
Nancy Poteat

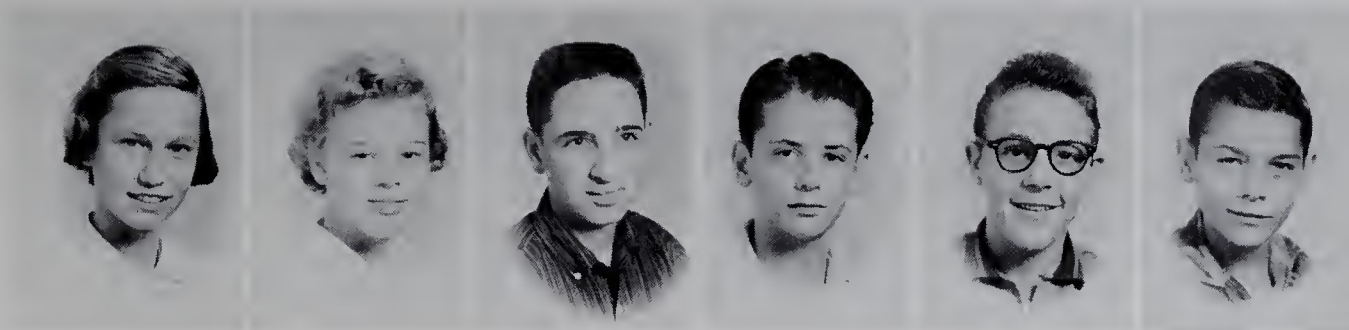
Margaret Price  
Carol Reinhardt  
Dean Reynolds  
Kathy Rhyne  
Sandra Sale  
Eddie Salley

Johnny Settle  
Jane Shepherd  
Barbara Silverman  
Larry Slawter  
Eddie Snow  
Ronnie Spann

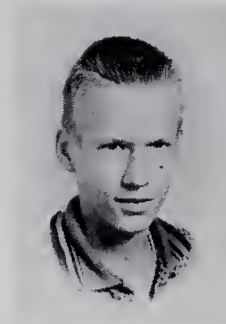
Garry Stevenson  
Billy Taylor  
Bill Thompson  
Douglas Tilley  
Gary Vestal  
Richard Walters



Donna Wheeler  
Nancy White  
Eddie Wiles  
Jimmy Willey  
Luckie Wilmouth  
Jackie Wood



Seth Wooten



#### LUNCHROOM WORKERS

Mrs. Carl Newman  
Mrs. Elsie Welborn

Mrs. Violet Smith  
Mrs. Ruth Edwards



#### LUNCHROOM HELPERS

Dean Reynolds      David Layell  
Eddie Snow



MAID  
Elsie Rice

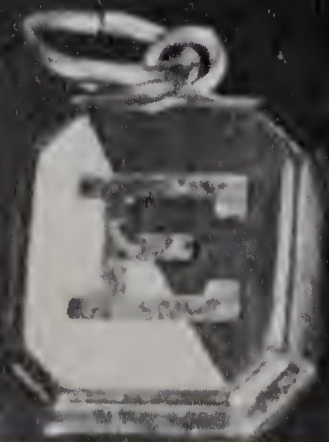
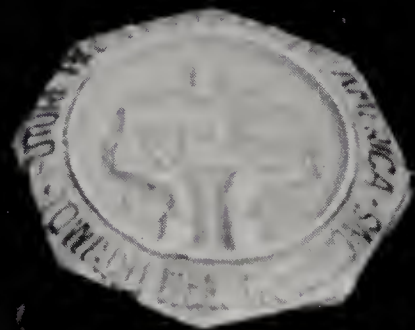


FLAG BOYS  
Johnny Blackburn    Steve Blackburn

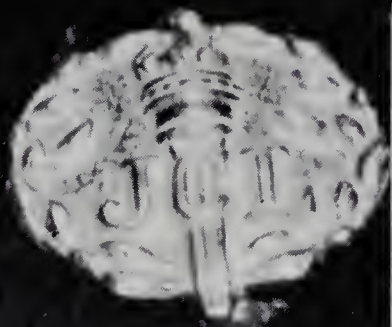


JANITOR  
John Thomas Bryant







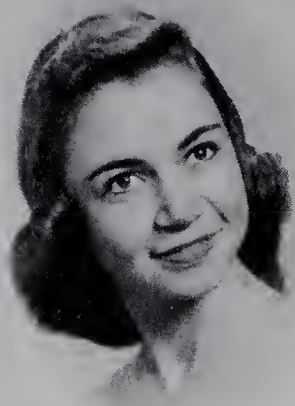


# *Activities*





# The Elk Staff



Vicki Mayberry  
Circulation Manager



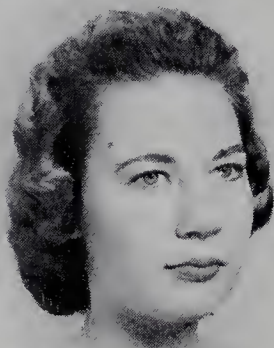
Anita Reichard  
Class Editor



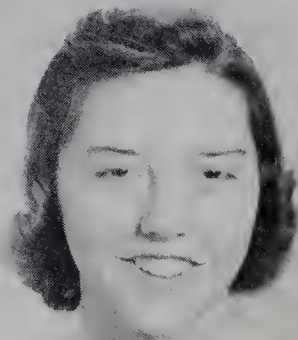
Nancy Franklin  
Sports Editor



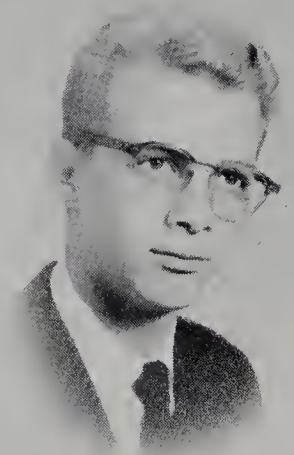
Laura Sears  
Photography Editor



Carol Burcham  
Assistant Editor



Siyble Carlton  
Editor



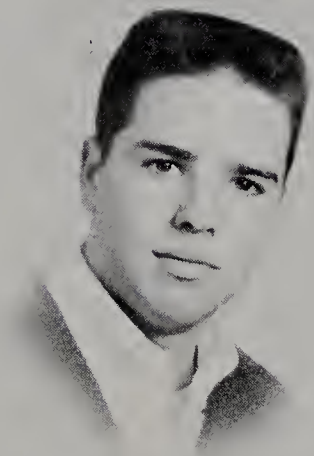
Claude Royall  
Business Manager



Mary Ellen Caudle  
Art Editor



Mrs. Adrian Nixon  
Adviser



Allen Laxton  
Advertising Manager



# Elkin High Politics

## The Elk Antler Staff



**Lena Couch**  
Editor



**Judy Beale**  
Assistant Editor

Claude, Bruce, Allen, and Ronnie discuss ad receipts with Mr. Mc-Niel.



st one tention w  
the Elk room repres  
are an his repor  
Being obey the  
nts, he Council.  
the Council.  
purpose  
one phase--that  
the Student Co  
Immediately we wan  
turn to the next  
because we think  
is an uninteresting  
subject, but is we  
to realize how impo  
this slight glance  
politics is, we  
realize its import  
We may think  
we have no part in  
Student Council un  
we are an officer  
representative.  
is not true; e  
student is the Stu  
Council. Whom  
elect and what you  
quest of our Stu  
Council make it. It will prosper.



Miss Cooke looks on as Marian, Anita, and Nancy read papers from other schools.

Bruce Burchette  
News Editors....

Nancy Franklin  
Morton Davis

Mary Ellen, Pat, Mary Ruth, and Carol learn to run the mimeograph machine.

Mary Ellen Caudle



Through our Student Council we are able to learn about the activities of other schools. We also learn about voting and, since the Student Council elections are a copy of the National election, realize the impor-

Judy, Vicki, Jane, and Jo Ann type copy for the ELK ANTLER.







*First Row:* Mr. Homer Walker, Adviser; Betty Turner; Elizabeth Freshour; Mary Ellen Caudle; Ruby Mastin; Carol Yarboro. *Second Row:* Peggy Carter, Dellaphine Carter, Paulette Byrd, Carol Burcham. *Third Row:* Jerry Gaither, Garland Pardue, Ronnie Transou, Johnny Welborn. *Fourth Row:* Stephen Edwards, June Sofley, Larry Darnell, Tommy Osborne, Jimmy West

## *Glee Club*

## *Band*

Sandy Biggs, Kenneth Blackburn, Rita Brinegar, Maurice Bumgarner, Garvey Burchette, Bobby Carter, Dellaphine Carter, Hilda Gay Carter, Clara Belle Causey, Buddy Chappell, Nancy Carol Collins, Donald Couch, Tonny Darnell, Susan Daye, Steve Dobbins, Johnny Ford, Steve Freeman, Hack Fry, Jimmy Gaither, Mark Green, Larry Hanks, Peggy Haynes, Rick Henderson, Kenneth Martin, Mary Lou Meed, Brenda Park, Jimmy Poplin, Johnny Settle, Carol Teague, Lynda Tinsley, Dayle Wiles, Mickey Yarboro, Bandmaster Homer Walker





*Dancing:* Jim West and Phyllis Irion, Treasurer; Bruce Burchette, President and Vicki Mayberry, Vice-President; Ronnie Transou and Laura Sears, Secretary. *Standing:* Peggy Haynes; Jack Wampler; Sammy Sloop; Marie Gambill; Anita Reichard; Jimmy Uldrick; Linda Parker; Mary Ellen Caudle, Chaplain; Marcella Sears, Program Chairman; Benny Hampton; Siyble Carlton; Carol Burcham; Garland Pardue



## *Spanish Club*

## *Latin Club*



*First Row:* Steve Holloway, Betty Windsor, Carolyn Walters, Linda Scott, Betty Ann Sloop, Martha Pardue. *Second Row:* Betty Ruth Brown, Shirley Brian, Sue Ann Pennell, Penny Jackson, Anita Shore, Larry Stewart. *Third Row:* Betty Jane Weaver, Jane Cranford, Connie Triplette, Barry Lankford, Mickey Gregory, George Carson. *Fourth Row:* Judy Harris; Judy McCain, Chaplain; Billie Jean Elderton; Carolyn Hampton; Ann Sagar; Anne Howland. *Fifth Row:* Harry Jennings; Frank Curtis; Steve Martin; Ronnie Hooper, President; Clara Belle Causey; Annette Hayes. *Standing:* Avery Neaves; Lind Howland; Jane Franklin, Reporter; Kate Harris, Program Chairman; Janet Burcham, Secretary; Sara Stockton; Patsy White; Buddy Chappell; Sammie McCain; Steve Freeman; Sandy Biggs, Vice-President; Ben Harding; Johnnie Dockery; Robert Dillon; Walter Metz; Jo Ann Foster; Carole Wright; Sharon Cockerham; Miss Emma Cooke, Adviser





*First Row:* Vicki Mayberry; Mrs. Carl Calloway, Adviser; Gale Eidson, Vice-President; Nancy Franklin, Chaplain; Larry Nixon, President; Judy Beale, Secretary; Claude Royall, Treasurer; Janet Couch. *Second Row:* Kay Long, Pat Allen, Jane Redmon, Blanche Poplin, Sara Redmon, Mary Lou Meed, Jackie Simmons, Peggy Haynes, Bobby Lankford, Siyble Carlton, Lena Couch. *Third Row:* Tom Dillon, Judy Silverman, Marian Davis, Margaret Parrott, Bud Stuart, Benny Hampton, Garland Pardue, Jack Wampler, Bunny Jane Thompson, Betty Frances Meed, Bill Hall. *Fourth Row:* Norman Graham, Alice Cranford, Jim Allen, Mary Ann Johnson, Lana Smoot, Ellen Cooke, Mary Armfield, Johnsey Martin, Sterling Sagar, Linda Eidson, Dickie Evans. *Fifth Row:* James Graham, Lawrence Laxton, Niels Jacobsen, Bob Hartness, June Sofley, Jimmy Lawrence, Jim Shore, Dennis Smoot, Guy Snow, Charles Rhyne, Wesley Smitherman

## *Beta Club*

## *Marshals*

Ellen Cooke  
Norman Graham  
Bobby Lankford  
Kay Long  
Mary Ann Johnson  
Alice Cranford, Chief



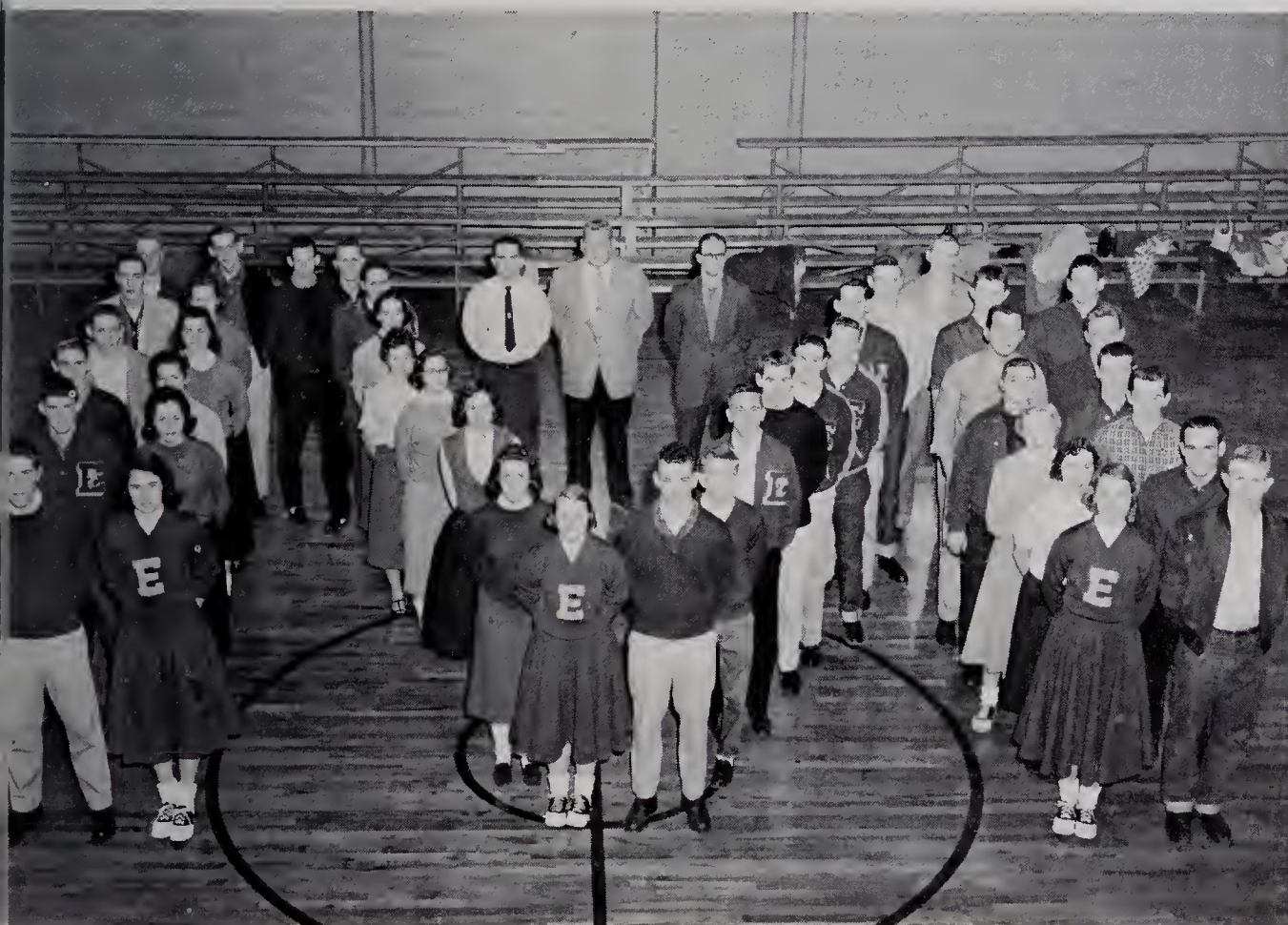


*Sitting:* Mr. Fred Rogers, Adviser; Bob Lankford; Mary Lou Meed; Ellen Cooke; Larry Nixon, Parliamentarian; Judy Beale, Secretary; Norman Graham, Vice-President; Gale Eidson, Treasurer; Niels Jacobsen; Jim Lawrence; Guy Snow; Lena Couch; Mr. Blois Gris-som, Adviser. *Standing:* Annette Hayes; Carolyn Walters; Dwayne Hampton; Patty Sue Cummings; Margaret Price; Jim Shore, President; Steve Caudill; Jane Cranford; Ronnie Hooper; Marcella Sears



## *Student Council*

## *Monogram Club*



Will Newman and Margaret Gentry; Jerry Harris and Judy Silverman; Garland Pardue and Janet Burcham; Ronnie Hooper and Della-phine Carter; Jim Uldrick and Carol Burcham; Lawrence Laxton and Kent Eidson; Tommy Osborne; Jimmy Lawrence; Sandy Biggs; Savanna Carrico; Nancy Carol Collins; Clara Belle Causey; Jo Ann Saylor; Jane Wooten; Nancy Franklin and George Hart; Butch Eller; Bob Hartness; Tommy Davis; Steve Caudill; Dallas Nance; Gale Eidson, President; James Graham; Guy Snow; Niels Jacobsen and Jim Shore; Jerry Vestal and Bill Hooper; Bud Stuart and Larry Nixon; Judy Beale, Secretary, and Norman Graham; Mary Ann Johnson and Jim Allen, Treasurer; Anita Reichard and Wally Holcomb, Vice-President; Advisers: Coaches Groce, Gris-som, and Eldridge



*Kneeling:* Tom Dillon, Co-Chaplain; Claude Royall, Vice-President; Gale Eidson, Co-Chaplain; Guy Snow, President; Larry Nixon, Treasurer; Bob Hartness, Secretary. *Standing:* Ronnie Hooper, Billy Waring, Tommy Osborne, Larry Darnell, Jim West, Wesley Smitherman, Lanny Johnson, Jim Shore, Bud Stuart, Jim Ul-drick, Coney Gentry, Kent Eidson, Dickie Evans, Norman Graham, Steve Caudill



## *Hi-Y Club*

### *Bus Drivers*



*Kneeling:* Bennie Hampton, Gale Money. *Standing:* Mr. Clyde Parker, Adviser; Garvey Burchette; Guy Snow; Kenneth Blackburn





*First Row:* Shirley Brian, Linda Scott, Sue Pennell, Betty Ann Sloop, Sharon Cockerham, Martha Pearson, Marcella Sears, Becky Freeman, Patsy Kennedy. *Second Row:* Judy Harris, Hilda Gay Carter, Alice Calhoun, Betty Jane Weaver, Molly Barker, Constance Triplette, Jane Cranford, Jo Ann Foster, Sara Stockton. *Third Row:* Brenda Park; Janet Poplin; Evelyn Hudspeth; Kate Harris; Lind Howland; Toby Butner; Linda Parker, President; Judy McCain, Vice-President; Jimmie Ann Miller, Treasurer; Peggy Johnson; Jane Franklin, Secretary; Lorene Key. *Fourth Row:* Anita Shore, Carole Wright, Anne Howland, Penny Jackson, Susan Taylor, Carolyn Hampton, Ann Sagar, Lynn Shepherd

## *Junior Tri-Hi-Y*

## *Senior Tri-Hi-Y*

*Sitting:* Mary Ann Johnson; Vicki Mayberry; Peggy Haynes, Co-Chaplain; Ellen Cooke, Co-Chaplain; Mary Etta Armfield, Vice-President; Nancy Franklin, President; Marian Davis, Treasurer; Jane Wooten; Jo Ann Saylor, Secretary; Mrs. Tom Comer, Adviser; Laura Sears. *Standing:* Kay Long, Betty Frances Meed, Bunny Jane Thompson, Rachel Sloop, Mary Ruth Transou, Linda Eidson, Alice Cranford, Margaret Parrott, Sterling Sagar, Lynda Tinsley, Savanna Carrico, Kay Francis, Phyllis Irion, Anita Reichard, Judy Silverman, Pat Allen, Mary Lou Meed







*Seated:* Dellaphine Carter; Sara Mathis, Treasurer; Jo Ann Mounce, President; Sharon Cockerham, Reporter; Frances Walker, Chaplain; Belvin Adams, Parliamentarian; Patsy Hemric, Vice-President; Paulette Byrd, Song Leader. *Standing:* Miss Mary Holland, Adviser; Peggy Carter, Historian; Carolyn Hinson; Betty Chipman; Alta Barker; Betty Windsor; Pat Lyon; Susan Taylor; Vivian Johnston; Katie Lee Huff; Willie Mae Welborn; Ann Wampler

## *Future Homemakers Of America*

## *Future Secretaries Of America Club*

*First Row:* Joyce Day, Carol Yarboro, Mildred Darnell, Jerry Weatherman. *Second Row:* Jo Ann Saylor, Jane Wooten, Wanda Settle, Nancy Adams. *Third Row:* Margaret Felts, Nancy Baker, Linda Wiles, Ruby Mastin. *Standing:* Fay Southard, President; Mae Gentry, Treasurer; Mary Ruth Transou; Kay Francis, Secretary; Wanda Blevins, Reporter; Mr. Rex McNiel, Adviser





*Sitting:* Janet Couch, Secretary; Buddy Bruce, President; Joye Lawrence, Vice-President; Becky Cockerham, Treasurer. *Standing, First Row:* Sheldon Darnell, Carolyn Hinson, Earline Darnell, Betty Chipman, Fay Southard, Margaret Gentry, Charles Harris. *Standing, Second Row:* Mrs. Adrian Nixon, Adviser; Vernon Luffman; Jo Ann Mounce; Tony Newman; Jerry Wilmoth



## *Distributive Education Club*

## *Diversified Occupation Club*



*Kneeling:* Sam Shore; James Hanks; Fred Harmon, Vice-President; Bob Adams, Treasurer; Max Blackburn, President; Sam Guyer. *Standing, First Row:* James Chatman, Billy Darnell, Sam Hinson, Leonard Darnell, David Cleary, Donald Couch, Tommy Couch, Mr. Claude Eldridge, Adviser. *Standing, Second Row:* Gwyn Gilliam, David Caudle, Franklin Hinson, Harold Pardue, Jerry Vestal, Wallace Byrd, Wendell Lowery





*Sitting:* Kay Francis, Jane Wooten, Betty Frances Meed, Nellie Jo Lawrence, Mrs. Fred Rogers, Mr. Fred Rogers, Jo Ann Saylor, Pat Lewis. *Standing:* Siyble Carlton, Sally Evans, Agatha Harris

## *Office Assistants*

## *Library Assistants*

*Sitting:* Lanny Johnson, Treasurer; Will Newman, Vice-President; Judy McCoin, President; Mary Lib Collins, Secretary; Lind Howland, Reporter. *Standing:* Dellaphine Carter, Margaret Felts, Peggy Haynes, Nancy Carol Collins, Virginia Dula, Marcella Sears, Clara Bell Causey, Sara Stockton, Brenda Cothren, Lois Burchette, Linda Carlton, Betty Turner, Mrs. Carl Calloway, Adviser





*Sitting:* Lorene Key, Peggy Johnson, Linda Cockerham, Claudia Layell, Frances Hanks, Sharon Cockerham, Frances Walker, Betty Ruth Brown, Rebekah Gentry. *Standing:* Janet Vestal; Jimmy West; Barry Lankford; Tony Swaim; Robert Dillon; Steven Martin; Walter Metz; Harry Jennings; Dallas Nance; Jim Ul-drick; Ben Harding; Frank Curtis; Billy Waring; Johnny Blackburn; Joe Bivins; Jerry Blackburn; Johnny Ford; Ronnie Long; Buddy Chappell; Jerrel Holloway; George Carson; Michael Carroll; Andrew Jackson; Garvey Burchette; Mr. Bert Joines; Adviser; Nancy Baldwin



## *Science Club*

## *4-H Club*



*First Row:* Claudia Layell, President; Eddie Snow, Vice-President; Pam Thomas, Secretary; Bonnie Shepherd, Chaplain; Bonnie Shore; Mary Lib Collins, Song Leader. *Second Row:* Dean Reynolds, Sharron Crummer, Peggy Macemore, Elizabeth Freshour, Bill Thompson. *Third Row:* Eddie Wiles, Genevieve Teague, Jo Ann Sexton, Ronnie Spann, Garvey Burchette. *Fourth Row:* Louise Moncus, Geneva McCain, Douglas Tilley, Agatha Harris



# NO SMOKING







# *Athletics*





Mr. Joines homeroom's float came in first in the parade.



Mrs. Bivins homeroom's float came in second.

# Homecoming



Queen Margaret and her attendants, left to right, *First Row:* Margaret Gentry, Anita Reichard. *Second Row:* Lorene Key, Wanda Blevins, Patsy Darnell, and Ann Plaster



Queen Margaret Gentry reigned over Homecoming.



Our cowgirls, left to right, Pat Allen, Vicki Mayberry, Phyllis Irion, Alice Cranford, Anita Reichard, Mary Ann Johnson, Peggy Haynes, danced for us at half-time.



Mr. Freeman's float was third.





Jane Franklin  
Sophomore



Kate Harris  
Sophomore



Billy Jean Elderton  
Sophomore

## *Cheerleaders*



Nancy Franklin  
Senior

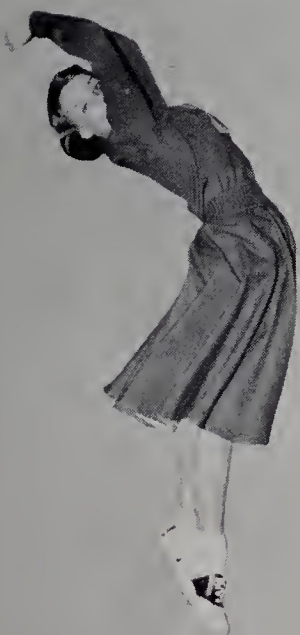


Margaret Gentry  
Senior, Chief



COACH

Mrs. Hilda McDonald



Anita Reichard  
Senior



Molly Barker  
Freshman



Penny Jackson  
Freshman



Annette Hayes  
Freshman



Jim Allen  
Fullback, Captain



Wally Holcomb  
Quarterback, Captain



Ross Fox  
Tackle



Jim Shore  
End

Bill Hooper  
End



Jerry Harris  
Guard

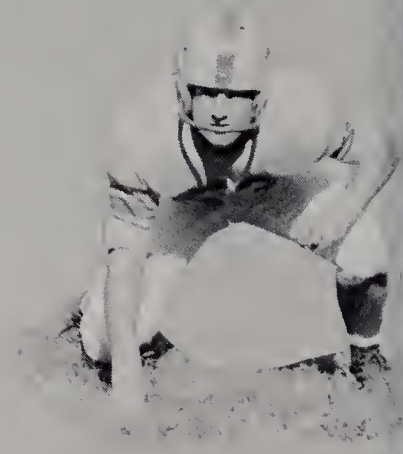


## *Seniors*

Lawrence Laxton  
Guard



Ronnie Cook  
Tackle



Bud Stuart  
Halfback



Alfred Billings  
Center



Gale Eidson  
End



Larry Nixon  
Guard







*Left to right, First Row:* Charles Gregory, Lanny Johnson, Allen Laxton, Gale Eidson, Norman Graham, Ross Fox, Will Newman, Jerry Harris, Alfred Billings, Lawrence Laxton, Bill Hooper, Jim Shore. *Second Row:* Ronald Scronce, Steve Caudill, David Balzer, Ronnie Hooper, Jim Allen, Dallas Nance, Coney Gentry, Ronnie Transou, Joe Newman, Bud Stuart, George Hart, Danny Holcomb, Tommy Davis. *Third Row:* Bobby Carter, Bill Overcash, Ronnie Cook, Steve Holloway, Wally Holcomb, Johnny Blackburn, Bud Hall, Larry Nixon, Harry Jennings

## Football

### SCORES

*Elkin_____ 0	Granite Falls_____ 0
*Elkin_____31	Franklin _____14
*Elkin_____25	Jonesville _____ 0
Elkin_____12	Appalachian _____ 6
*Elkin_____21	Sparta _____19
Elkin_____ 0	Wilkes Central_____12
*Elkin_____12	West Wilkes_____ 0
*Elkin_____19	Boonville _____ 0
*Elkin_____40	West Yadkin_____14
*Elkin_____27	Yadkinville _____ 0

Elkin High came through a very successful season by racking up 8 wins, 1 tie, and 1 loss. With this wonderful record the boys won the Yadkin Valley Conference. They went on to tie their State AA game with Mt. Holly.

Mt. Holly was declared winner on the basis of the number of yards gained.

### COACHES



Coaches Eldridge and Grissom led our boys through a successful season.



# *Bucking Does*



**Jane Wooten**  
Forward



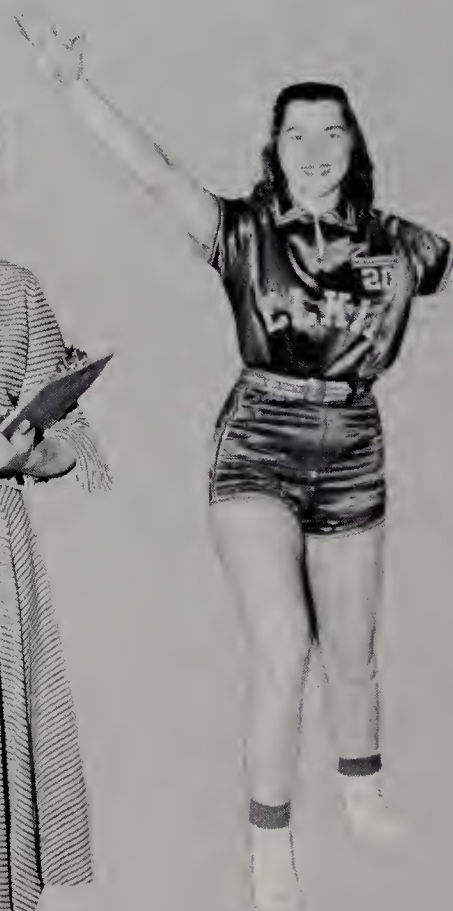
**Judy Beale**  
Forward



**Carol Burcham**  
Captain, Guard



**Mrs. Pardue**  
COACH



**Dellaphine Carter**  
Co-Captain, Guard





*Left to right, First Row:* Hilda Gay Carter, Mary Lou Meed, Patsy Kennedy, Janet Burcham, Linda Scott, Toby Butner, Jane Wooten, Dellaphine Carter, Carol Burcham, Linda Eidson, Eileen Holcomb, Brenda Park, Martha Pardue, Jo Ann Foster, Becky Freeman, Judy Beale. *Second Row:* Mary Ann Johnson, Savanna Carrico, Coach Pardue, Betty Frances Meed, Manager, and Peggy Haynes, Manager

## *Basketball*





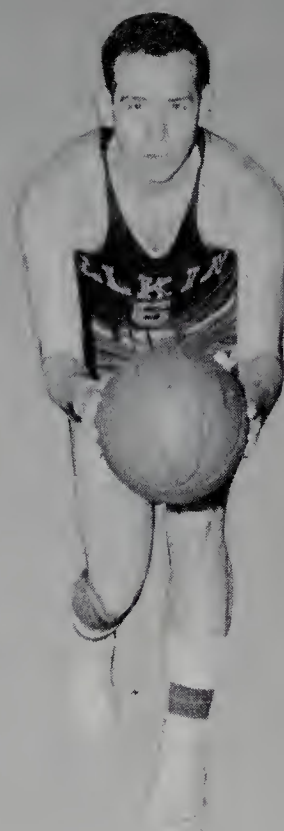
COACH  
Mr. Eldridge



Gale Eidson  
Forward



Wally Holcomb  
Captain, Guard

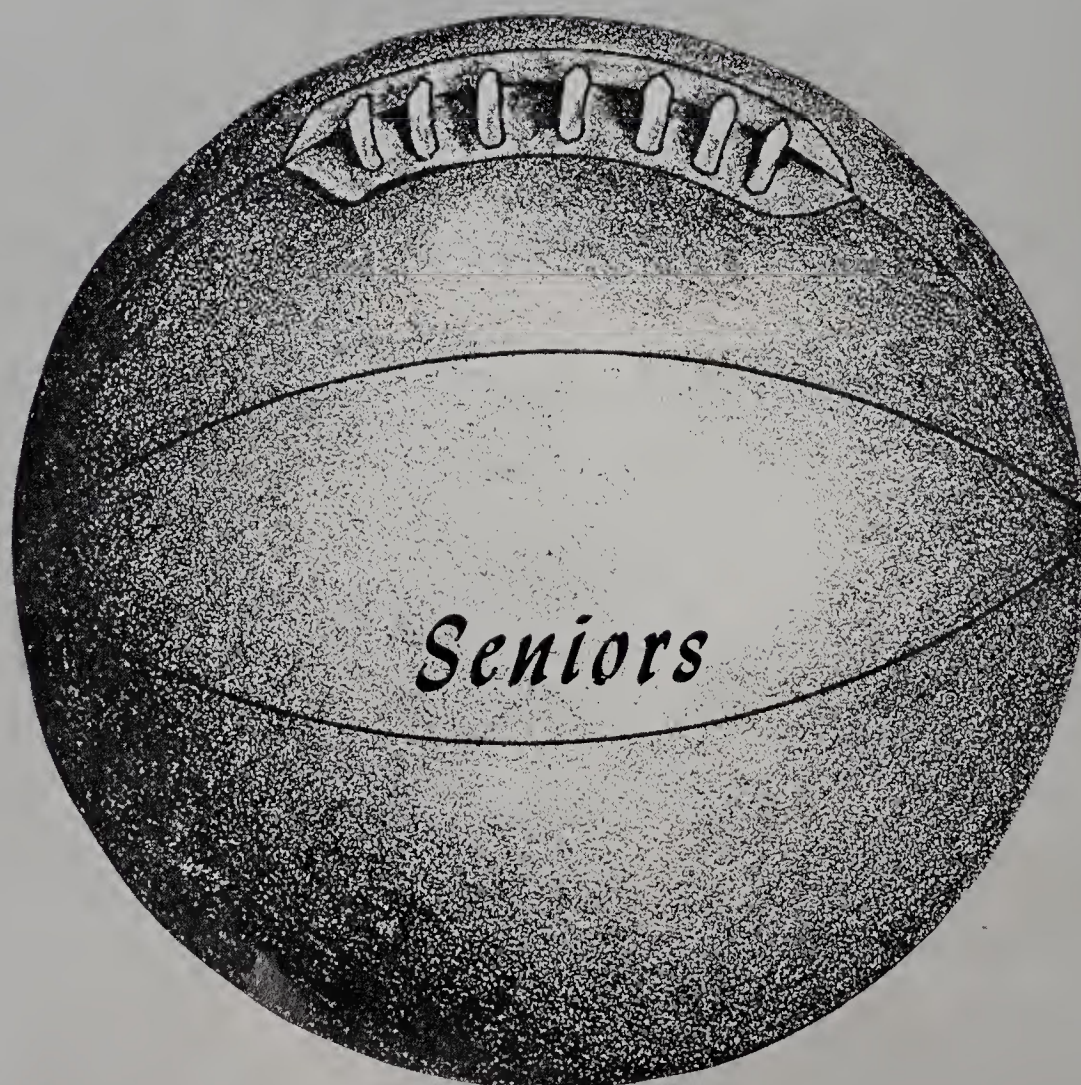


Bruce Burchette  
Guard



Jim Shore  
Center

## *Bucking Elks*







*Left to right, First Row: Will Newman, Norman Graham, George Hart, Wally Holcomb, Ronnie Hooper, Ronnie Transou, Tommy Osborne. Second Row: Sonny Hemric, Manager; Steve Holloway; Gale Eidson; Jim Shore; Wesley Smitherman; Bruce Burchette; Larry Stewart, Manager; and Coach Eldridge*

## *Basketball*







Coach William Groce, Trent Gilmore, Coney Gentry, David Balzer, Joe Newman, Jerry Harris, Jerry Vestal

## *Wrestling*

## *Baseball*

*First Row:* Gene Harris, Dallas Nance, Coney Gentry, Will Newman, Jim Lawrence, Bruce Burchette, Ross Fox. *Second Row:* Coach William Groce, Johnny Blackburn, Steve Caudill, Sammy McCain, Harry Jennings, Ronnie Hooper, Tommy Davis, David Balzer, Jim Uldrick, Tommy Osborne, Bud Hall, Ronnie Transou, Steve Holloway, Eddie Mastin, Joe Newman







*First Row:* Steve Martin, George Carson, Johnny Ford, Billy Waring, Barry Lankford, Avery Neaves, Robert Dillon, Walter Metz, Ben Harding. *Second Row:* Michael Carroll, Larry Nixon, Kent Eidson, Niels Jacobsen, Gale Eidson, Wally Holcomb, Lawrence Laxton, Bob Hartness

## Tennis

## Track

*First Row:* Seth Harris, Jim Allen, Bill Hall, Steve Caudill, Dallas Nance, Garland Pardue, George Hart, Maurice Bumgarner, Trent Gilmore. *Second Row:* Coach Grissom, Ronnie Transou, Ronnie Hooper, Wesley Smitherman, Tommy Davis, Michael Lawrence, Charles Gregory, Norman Graham, Tom Dillon. *Third Row:* Steve Holloway, Billy Overcash, Bill Hooper, Fred Harmon, Bobby Carter, Sammy McCain, Jerry Vestal, Will Newman











# *Advertising*





Compliments of

## **The Bank of Elkin**

Member of the Federal Deposit  
Insurance Corporation

Elkin

Jonesville

North Carolina

Phone 80

### **PEPSI-COLA BOTTLING CO. OF WINSTON-SALEM, INC.**

Elkin Branch

P. O. Box 289

Telephone: 590

Elkin, N. C.

### **GRIFFIN'S Sporting Goods and Gifts**

Elkin, N. C.

Athletic Equipment  
Office and School Supplies

Compliments of

### **COBLE DAIRY PRODUCTS, INC.**

### **DAIRY QUEEN**

Home of Good Ice Cream  
and Sandwiches



Compliments of

**HOLCOMB BROTHERS**

Phone 254

Compliments of

**BEN FRANKLIN 5 & 10**

Elkin, N. C.

Compliments of

**WHITE SWAN LAUNDRY**

Dry Cleaning

Compliments of

**SURRY HARDWARE**

Elkin, N. C.

**AIRPARK CANTEEN**

Grade "A" Cafe  
Sheltered Curb Service  
100 Good Food Items  
Carry Out Service

Phone 888

Compliments of

**MOSELEY AND REECE**

Elkin, North Carolina

**J. M. FRANKLIN**

Architect and Engineer

**CASH & CARRY  
STORES, INC.**

Wholesale  
Groceries, Feeds, Meats  
and Notions

Phone 230



# ELKIN FURNITURE CO.

Manufacturers of

*BEDROOM FURNITURE*

A Good Drug Store

**ABERNETHY'S  
PHARMACY**

The Rexall Store

Elkin, N. C.

Compliments of

**ROYALL DRUG CO., INC.**

George E. Royall

Edwin Royall

Henry Dillon

**HENSEL-FULLER  
PULPWOOD COMPANY**

Elkin, N. C.

Compliments of

**BLACKWELDER  
FURNITURE CO.**

The Home of Quality Furniture  
For Less Money

Open 'til 7:30 P.M.

Elkin Ph. 150

Jonesville Ph. 550



**CARL W. STEELE  
JEWELRY STORE**

Watches — Diamonds — Jewelry

Elkin, N. C.

Congratulations and Best Wishes  
To the Class of 1958

**ELKIN-JONESVILLE  
BUILDING AND LOAN  
ASSOCIATION**

Compliments of

**MINUTE GRILL**

Compliments  
of

**DUN-WELL CLEANERS**

Compliments of

**THE BASKETERIA**

Elkin, N. C.

Compliments of

**COCKERHAM'S  
BARBER SHOP**

Elkin, N. C.

Compliments of

**McDANIEL'S DEPT. STORE**

Elkin, N. C.

**ROSE & DAY, INC.**

Pontiac Sales and Service

Phone 345

Night Phone 430

24-Hour Wrecker Service



Compliments of

**YADKIN VALLEY  
PACKERS, INC.**

Processors of "Piedmont's Best"

**YADKIN FINANCE  
CORPORATION**

"Home Company for Home Folks"

Elkin, N. C.

Compliments of

**COLLINS PURE OIL  
SERVICE STATION**

204 West Main Street  
Elkin, N. C.

Compliments of

**ALEXANDER-STEVENSON  
FUNERAL HOME**

Phone 800  
Elkin, North Carolina

**WINSTON ROAD  
FURNITURE CO.**

"For the Things with Which You Live"

Open Nights 'til 9  
Highway 67, Jonesville  
Phone 1079

**SNOW MOTOR CO.**

136 South Bridge St.  
Phone 613

Sales — BUICK — Service

Compliments of

**WILLIAMSON  
ELECTRIC CO.**

Elkin, N. C.

**F. W. CHEVROLET, INC.**

Elkin, N. C.

Sales and Super Service  
Wrecker Service

Night Phone 775  
Day Phone 255



Compliments of

**LAWRENCE  
DRY CLEANERS**

Elkin, N. C.

Compliments of

**J. C. PENNEY CO.**

Phone 138

108 E. Main St.

Elkin, N. C.

**ISENHOUR'S JEWELRY**

Gifts That Last

Main Street

Elkin, N. C.

**J. H. BEESON  
MUTUAL INSURANCE**

Phone 17

Elkin, N. C.

Compliments of

**THE ELKIN TRIBUNE**

Elkin, N. C.

Compliments of

**ELK PHARMACY**

Phone 310

Elkin, N. C.

Always at Your Service

Compliments of

**CHARLES' MOTEL**

**G & B OIL COMPANY**

E. C. Boyles

Wholesale and Retail

Phone 370



Compliments of

**LUCY GRAY'S  
BEAUTY SHOPPE**

Phone 380  
Elkin, N. C.

Compliments of

**WESTERN AUTO**

Home-owned

Elkin, N. C.

Compliments of

**K L O N D I K E  
F A R M**

Registered Guernsey Cattle  
Golden Guernsey Milk

Telephone 30-R

Elkin, North Carolina

Compliments of

**MARTIN BAKE SHOP**

Telephone 615

Jonesville, N. C.

**WHITE BROTHERS**

Blocks and Building Materials  
Well, Road and Drain Tile  
Russcoe and Steel Windows  
Plumbing Supplies

Phone 627  
Boonville Highway

**PEELE & THOMPSON  
RADIO, TV APPLIANCE  
COMPANY**

RCA — Zenith — Motorola  
We Sell the Best and Service the Rest  
C. E. Peele — A. K. Thompson  
Phone 362 124 W. Main St.  
Elkin, N. C.

**L. G. BALFOUR COMPANY**

"Known Wherever There Are Schools  
and Colleges"

Class Rings and Pins  
Commencement Invitations — Diplomas  
Personal Cards — Club Insignia  
Medals & Trophies

Mr. W. Albert Bealle Mr. John Bruce  
P.O. Box 882  
Statesville, North Carolina



**ROY'S RESTAURANT**

"Where Friends Meet To Eat"

1111 North Bridge Street  
Elkin, North Carolina

Compliments of

**SLATER SYSTEM  
FOOD SERVICE**

For Decorated Cakes  
For Special Occasions

Call 934-J

Compliments of

**ED SNYDER'S**



**NATIONWIDE  
INSURANCE**

LIFE

AUTO

FIRE

Your Select Risk Company  
Agent

**E. RAYMOND WOLFE**

Telephone 972

Elkin, N. C.

Compliments of

**HALL-KNOTT & EDWARDS**

Compliments of

**SPEAS HOME  
& AUTO SERVICE**

Compliments of

**DAVIS INSURANCE  
AGENCY**

Compliments of

**FRAZIER INSURANCE  
AGENCY**

209 West Main Street

Telephone 822

Elkin, North Carolina



Compliments of

# ***SPAINHOUR'S***

*A Modern Department Store*

Elkin, North Carolina

Compliments of

**BRENDLE CASH  
WHOLESALE, INC.**

J. D. Brendle

**WINEBARGER  
MOTOR COMPANY**

Ford Sales and Services

North Bridge Street  
Elkin, N. C.

Compliments of

**REEVES-LYRIC THEATERS**

Elkin, N. C.

Compliments of

**BI-RITE SELF-SERVICE  
GROCERY**

Phone 956                      1125 Elk Spur Ext.  
Elkin, North Carolina



Compliments of

**HARRIS AND WAGONER,  
INC.**

Elkin's Leading Clothing Store  
Elkin and North Wilkesboro, N. C.

Compliments of

**ROYALL INSURANCE**

**BROWN'S MACHINE CO.**

Electric and Acetylene Welding  
  
Phone 237

**WALL'S JEWELERS**

Watch and Jewelry Repairing  
  
Elkin, Mt. Airy, North Wilkesboro,  
North Carolina

Compliments of

**CHAPPELL JEWELERS**

Elkin, North Carolina

Commercial  
and

School Photography  
Weddings, Portraits

**STANLEY AND PARK  
STUDIO**

Arlie Stanley, Photography

Phone 76

Super Tire Service

**FIRESTONE**

"New, Silent Safti-Grip Retreading"  
John Bean, Visualiner and Balancer

A. Dan Hudspeth, Owner

689 North Bridge St.      Phone 246  
Elkin, N. C.



## CAROLINA BLOOMER CO.

Elkin, N. C.

209 East Main St.

Phone 91

Manufacturer of  
Women's and Children's  
Fine Quality Lingerie.



He's busier every day, yet always ready when you need him . . . to protect health, prevent accidents, guard your streets and playground and building . . . help in your parents' shops and factories, and add comfort in your homes.

**Duke Power Company**  
*Serving the Piedmont Carolinas*

## SPONSORS

Belk-Doughton Company  
Hugh Chatham Memorial Hospital  
Dr. J. H. Howard  
Dr. M. O. Fox  
Dr. R. B. Boren  
Grady Rogers  
R. Lewis Alexander  
Sports Center, Inc.  
Dr. L. D. Pruett  
Rumple's Furniture Store  
Dr. Claude A. McNeill, Jr.  
Jonesville Hardware  
Cheek's Jewelry Store

Harris Electric Co.  
State Road Hardware  
Commercial Service  
P. A. Greenwood Oil Co.  
Amoco Super Service  
Morrison's Flower Shop  
Dr. R. B. Harrell  
Dr. J. A. Harrell  
Mary's Beauty Shop  
Dr. Seth M. Beale  
Rose's 5-10-25c Store  
Allen, Henderson and Williams  
Dr. V. W. Taylor, Jr.





**Best Wishes to the  
Students and Faculty  
Of Elkin High School**

Treat Yourself and Your Friends to a  
Visit to the Chatham Country Store  
All Sorts of Bargains  
Amid Pleasant Surroundings

***CHATHAM MANUFACTURING COMPANY***  
**Elkin, North Carolina**



















