

The Elk

1953





EMALINE HAYES
Editor-in-Chief

LOIS BROOKS
Business Manager

DICKIE MINISH
Advertising Manager

ANGELENE HOLBROOK
Photography Editor

PATSY FRANCIS
Circulation Manager

ANN DURHAM
Art Editor



SCHOOL SONG

Far below the Blue Ridge Mountains

There's a place we love,

And we live there always seeking

Higher aims above.



THE 1953 **ELK**

PUBLISHED BY THE JOURNALISM CLASS
OF
ELKIN HIGH SCHOOL
ELKIN, NORTH CAROLINA





*We've a school of which we're proud;
We'll always be true.
This we sing, our Alma Mater,
To our gold and blue.*





FOREWORD

We have tried to portray by words and pictures our days spent at EHS . . . the days of lasting friendships, of classes, of activities, and of honors. These are the days of Blue and Gold when cheers have become music, when defeats have cut deeply. These have been the carefree days of joy and laughter; these were the serious days of books and learning. Perhaps we're sentimental, but these days and these years will always be remembered by each of us as "Great Days" at Elkin High School.

CONTENTS

- ADMINISTRATION
- FACULTY
- CLASSES
- ACTIVITIES
- ATHLETICS
- FEATURES





MR. F. C. SCHIEBOUT
Principal

DEDICATION

In grateful acknowledgment of the innumerable services rendered to our class and to our school, we dedicate our '53 edition of the *Elk* to Mr. F. C. Schiebout, principal, whose genial personality, friendliness, genuine interest in individual students, and enthusiasm for learning inspire us daily.



MR. CARPENTER



MR. SCHIEBOUT



MRS. LOVETT

ADMINISTRATION

MR. N. H. CARPENTER,
A.B., M.A.

Superintendent
Lenoir Rhyne College,
Duke University,
University of North Carolina.

MR. F. C. SCHIEBOUT,
A.B., M.A.

Principal
Calvin College, Columbia University.

MRS. JAMES LOVETT
Secretary

BOARD OF EDUCATION



Mr. N. H. Carpenter, secretary; Mr. Hubert Parker, vice-chairman; Mr. R. W. Harris, chairman; Mr. Garland Johnson, treasurer; Mr. Brady Woodruff. Mr. E. H. Holbrook.

FACULTY



FIRST ROW: Mrs. Carl Calloway, B.S., English, Spanish, Library Science. Appalachian State Teachers College. ● Miss Emma Cooke, A.B., M.A., Mathematics, English. Duke University, Berea, Appalachian State Teachers College. ● Mr. Claude Eldridge, B.S., Mathematics, Physical Education. Appalachian State Teachers College. ● Mrs. Frieda Foster, A.B., English. University of North Carolina. ● Miss Mary Holland, A.B., Home Economics. University of South Carolina; Columbia College; Woman's College, University of North Carolina. ● Mr. Jesse G. Hollingsworth, History. University of North Carolina, University of Texas.

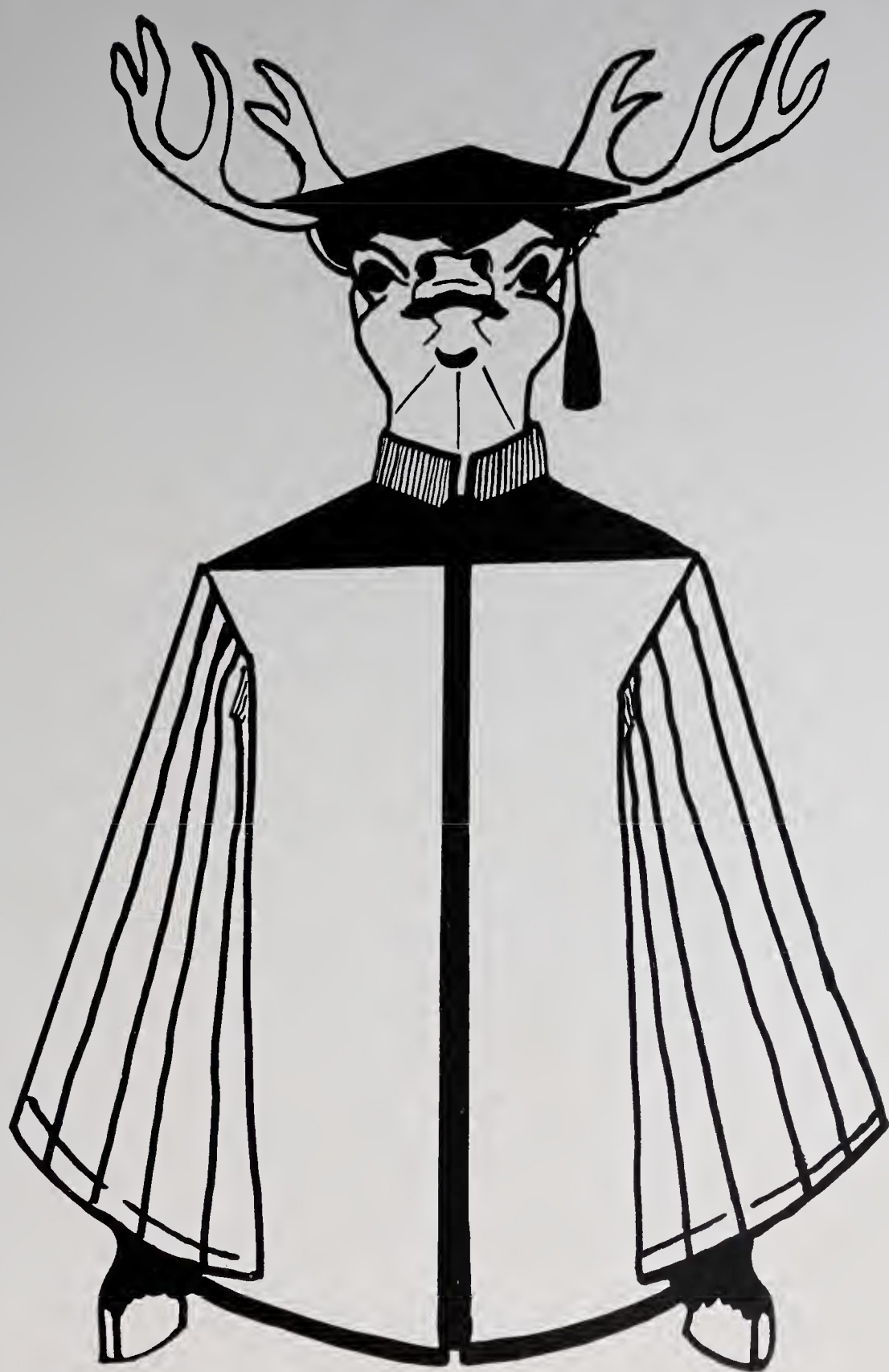
SECOND ROW: Mrs. Adrian Nixon, B.S., Secretarial Administration. Woman's College, University of North Carolina. ● Mr. Theodore A. Orr, Jr., B.S., Music. High Point College. ● Mrs. Mae Bryant Pardue, B.S., English, History, Physical Education, Appalachian State Teachers College. ● Mr. W. R. Richardson, B.S., Science, Social Studies. Appalachian State Teachers College. ● Mrs. H. J. Royall, B.S., English, History, French. Appalachian State Teachers College. ● Mrs. Irene M. Shore, B.S., English, History, French. Mary Washington, Salem College.

THIRD ROW: Mr. William H. Waring, Industrial Arts. Oregon State College, Rutgers University. ● Mr. Joseph T. Watts, B.S., English, Social Studies. Appalachian State Teachers College. ● Miss Ethel Whitley, A.B., Mathematics. Woman's College, University of North Carolina. ● Miss Polly Worrell, B.S., Physical Education, Social Studies. Appalachian State Teachers College. ● Mr. Robert Yarborough, A.B., Physical Education, Sociology. Guilford College.



Down, boy! The show must go on.
He's real! He's Hollywood's Rod Cameron.
It's a dog's life.
High drama—senior style.

SENIOR



CLASS



CLASS of '53

OFFICERS

Rogers Collins	<i>President</i>
Kent Bryant	<i>Vice-President</i>
Mary Martin	<i>Secretary</i>
John D. Haynes	<i>Treasurer</i>

"NOT FINISHED, JUST BEGUN"

I hear the beat
 Of youthful feet
 Come marching down life's highway.
 I see the dreams
 Of youthful schemes
 Come floating through life's skyway.

Their spirits high
 I hear them cry,
 "To reach the top we must!
 There's nothing less
 Than our success
 E'er we return to dust."

Oh youth, be strong!
 Sing loud your song
 For strength in midst of strife.
 Your cause is true
 And thus, to you,
 The rich rewards of Life.

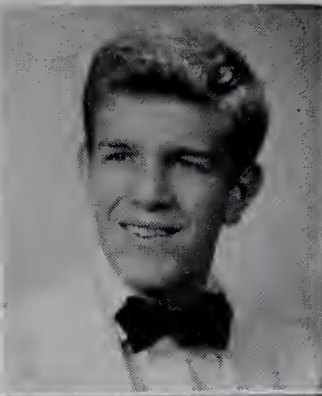
Class fifty-three,
 Twelve years I see,
 Twelve years you have been one.
 But e'er you go
 Would that you know
 That you've
 "Not finished, just begun."

Polly Price, *Poet*
 Class of '53

Class of '53

Peggy Jean Adams

Basketball 1; 4-H Club 1, 2, 3, 4, Reporter 4; F. H. A. Club 2, 3, 4; Tri-Hi-Y Club 2, 3, 4; Glee Club 3; D. O. 4.

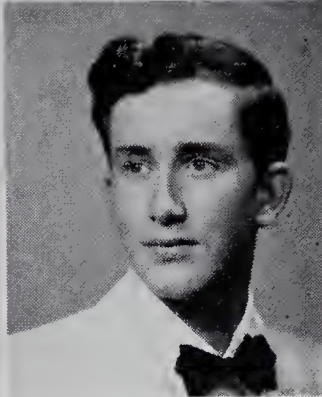
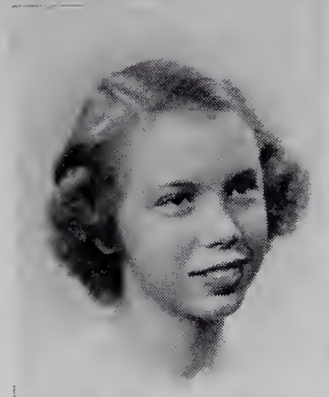


Charles Gladstone Ashby, Jr. ("Noonie")

Football 4; Basketball 4; Hi-Y Club 2, 3, 4, Chaplain 2, Vice-President 3, President 4; Inter-Club Council 3, 4, Vice-President 4; Spanish Club 2, 3, Vice-President 3; Junior Varsity Football 1; Class President 1; Class Treasurer 2; Class Giftorian 4; Student Council Representative 2, 4; Monogram Club 4; Beta Club 3, 4; Bi-Phy-Chem Club 2; Delegate to Student Council Congress 4; Quill and Scroll 4, Vice-President 4; the Elk staff 4; Sports Editor, the Elk Antler staff 4.

Lucy Ann Ball

F. H. A. Club 2, 3, 4, Vice-President 3, President 4; Glee Club 4.

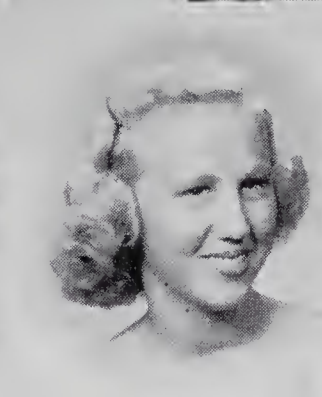


Carl Bengel

Glee Club 4, the Elk staff 4, the Elk Antler staff 4.

Sarah Glenn Boyles

Band 1, 2, 3, Librarian 1, President 2, Secretary 3; Cheerleader 1, 2, 3, 4; Tri-Hi-Y Club 1, 2, 3, 4, Chaplain 3; Beta Club 3, 4, Secretary 4; Monogram Club 3, 4, Secretary 3, 4; Student Council 1; Class Vice-President 3; Chief Marshal 3; Inter-Club Council 3; Bi-Phy-Chem Club 2, 3; Latin Club 2, 3, 4, Secretary 2; Western North Carolina All-State Band 1, 2, 3.

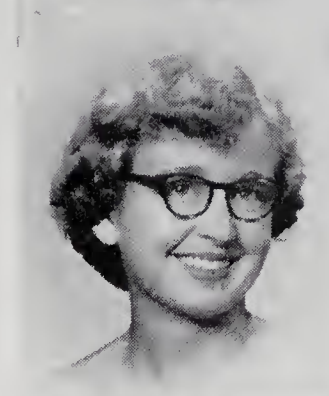


Mabel Elizabeth Brinegar

4-H Club 1, 2, 3, 4, Chaplain 3, Treasurer 4, County Council Reporter 4; F. H. A. Club 3, 4; Tri-Hi-Y Club 3, 4; Bi-Phy-Chem Club 3; Marshal 3; Beta Club 3, 4; D. O. 4.

Lois Irene Brooks

Volens High School 1, 2, 3; Tri-Hi-Y Club 4; Beta Club 4; Glee Club 4, Recreation Chairman 4; Business Manager, the Elk staff 4; the Elk Antler staff 4; Quill and Scroll 4.

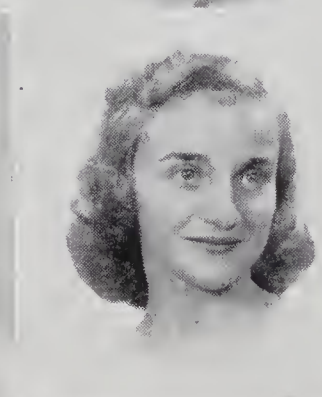
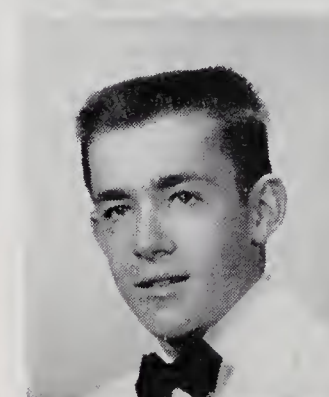


Ginna Karen Bryant

Cornwall Collegiate and Vocational High School 1, 2; Melrose High School 3; Beta Club 4; Tri-Hi-Y Club 4; Basketball 4; Band 4; Bi-Phy-Chem Club 4; Debating Club 4.

James Kenneth Bryant, Jr.

Cornwall Collegiate and Vocational High School 1, 2; Melrose High School 3; Beta Club 4; Football 4; Bi-Phy-Chem Club 4, President 4; Class Vice-President 4; Hi-Y Club 4; Debating Club 4; Track 4; Basketball 4.

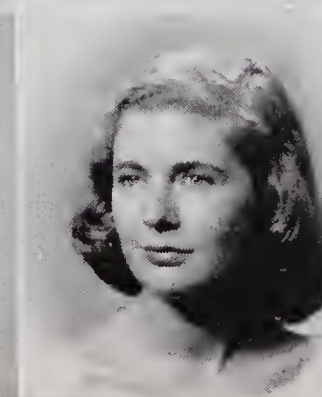
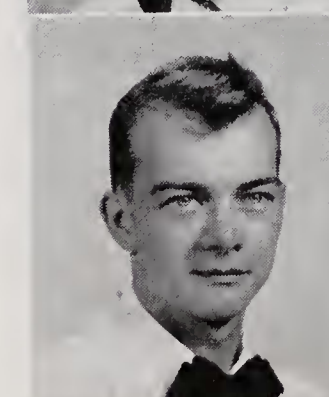


Janet Louise Burcham

Cheerleader 1, 2, 3; Glee Club 3, 4; President 3; Office Assistant 2; Bi-Phy-Chem Club 3; Monogram Club 3; D. O. 4; Tri-Hi-Y Club 2; Student Council 2.

Frank Chatman

Hi-Y Club 2; Basketball 1, 2, 4; Baseball Manager 2; Football Manager 3; Monogram Club 2, 3, 4; D. O. 4.



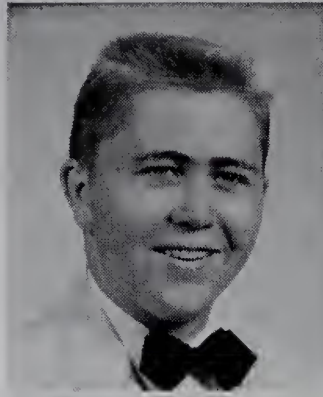
Sara Joyce Cochrane

Student Council 1; Latin Club 2; Office Assistant 1; Tri-Hi-Y Club 2; Beta Club 3, 4; Marshal 3; Glee Club 4.

Class of '53

Jimmy Roger Collins

Football 1, 2; Hi-Y Club 2, 3, 4, Treasurer 4; Class President 4; 4-H Club 1, 2; Inter-Club Council 4; Glee Club 4; Assistant Production Manager, the Elk Antler staff 4; the Elk staff 4.



Kathryn Ann Cranford

Tri-Hi-Y Club 2, 3, 4, President 4; Latin Club 2, 3, 4, Chaplain 2; Monogram Club 4; Bi-Phy-Chem Club 2, 3; Basketball 1, 4; Cheerleader 1, 2, 3, 4; Inter-Club Council 4, Secretary 4; Western North Carolina All-State Band 1, 2.



Cathryn Darnell

Tri-Hi-Y Club 2, Glee Club 3, D. O. 4.



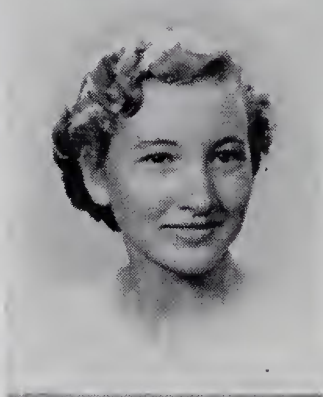
Jacque Darnell

Glee Club 4.



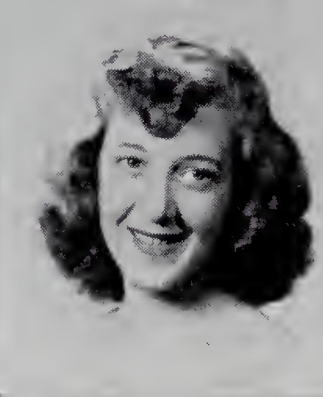
Polly Dudley

Spanish Club 3, 4; F. H. A. Club 3, 4; Bi-Phy-Chem Club 4; D. O. 4.



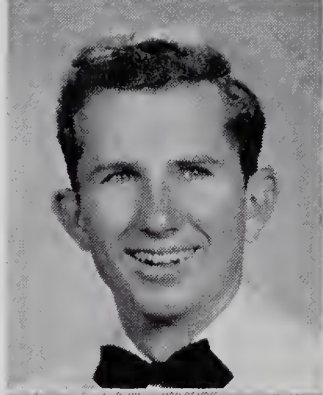
Anne "Midge" Durham

Majorette 2, 3, 4; Tri-Hi-Y Club 2; Bi-Phy-Chem Club 3; Glee Club 3, 4; Assistant Art Editor, the Elk Antler staff 4; F. H. A. Club 4; Softball 2; 4-H Club 1; Art Editor, the Elk staff 4; Student Council 1.



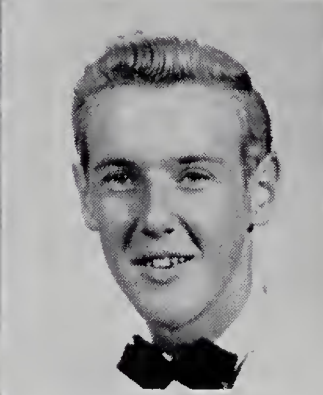
Charles Dean Edwards

Band 1, 2, 3, 4, Vice-President 4; Latin Club 1, 2, 3; Bi-Phy-Chem Club 2; Basketball 3; President, Student Council 4; Treasurer, Western District of North Carolina Student Council Congress 4; Beta Club 3, 4; Monogram Club 4; Hi-Y Club 2, 3, 4, Chaplain 4; Boy's State 3; Delegate to State Student Council Congress 4.



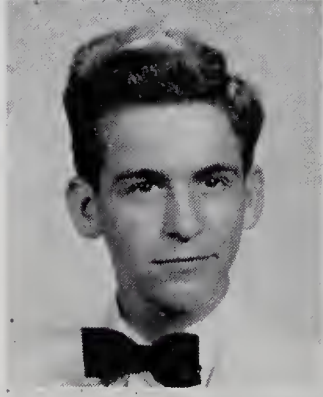
Fred Greene Eidson
("Fe Fe")

Football 4; Basketball 3, 4; Junior Varsity Football 1; Band 1, 2, 3; Latin Club 2, 3, 4; Hi-Y Club 2, 3, 4, Vice-President 4; Inter-Club Council 4; Beta Club 3, 4, President 4; Bi-Phy-Chem Club 2, 3, 4; Marshal 3; Monogram Club 3, 4; Business Manager, the Elk Antler staff 4; the Elk staff 4; Production Manager, the Elk Antler staff 4; Western North Carolina All-State Band 1; Quill and Scroll 4, Secretary-Treasurer 4.



John Eldridge

Elk Antler staff 4; Elk staff 4; Glee Club 4.



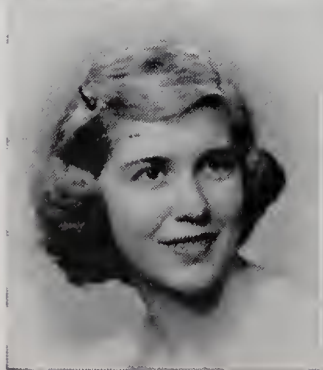
Betty Jean Felts

Glee Club 4; the Elk staff 4; the Elk Antler staff 4.



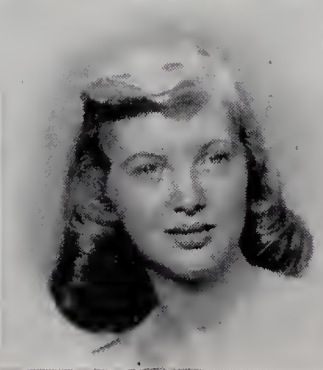
Pasty Ruth Francis

Student Council 1, 2; Tri-Hi-Y Club 2, 3, 4; Class Secretary 3; Glee Club 3, 4; Spanish Club 3, 4, Secretary 4; Beta Club 4; Bi-Phy-Chem Club 3, 4, Secretary 3, Vice-President 4; Social Editor, the Elk Antler staff 4; Circulation Manager, the Elk staff 4; Football Queen 4; Quill and Scroll 4.



Betty June Gentry

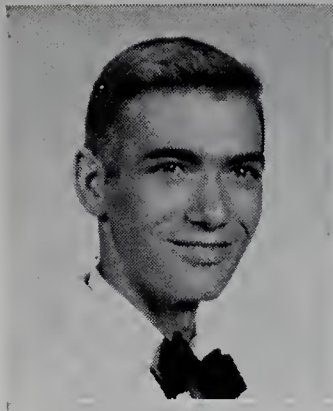
Spanish Club 3, 4; Beta Club 3, 4; F. H. A. Club 3, 4, Reporter 4; Glee Club 4; Bi-Phy-Chem Club 4.



Class of '53

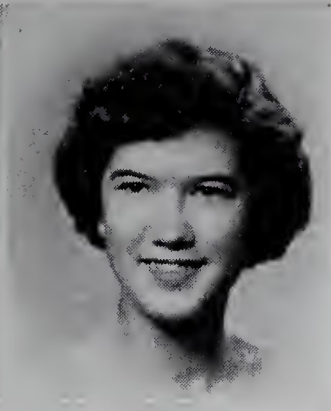
Jack Gentry

Football 2, 4; Hi-Y Club 4; Glee Club 3, 4; Debating Club 4; 4-H Club 3, 4, County Council Song Leader 3, President 4; the Elk staff 4; the Elk Antler staff 4.



Caryl Joy Guth

High Point Junior High School 1; Basketball 2, 3, 4; Track 3, 4; Monogram Club 3, 4, Chaplain 4; Bi-Phy-Chem Club 2, 3, 4; Beta Club 3, 4, Chaplain 4; Latin Club 3; Band 2, 4, Secretary-Treasurer 4.



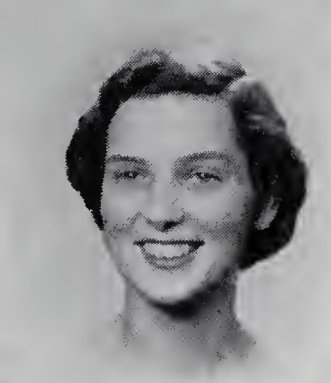
Edna Mae Guyer

4-H Club 1, 2, 3, 4, Treasurer 3, Secretary 4, County Vice-President 3; F. H. A. Club 1, 2, 3, 4, Song Leader 3, Parliamentarian 4, County Vice-President 3, County President 4; Tri-Hi-Y Club 2, 3, 4, Membership Chairman 4; Bi-Phy-Chem Club 3; Beta Club 4; News Editor, the Elk Antler staff 4; the Elk staff 4; Spanish Club 3, 4, President 4; Basketball 3, 4; Girl's State 3; Quill and Scroll 4.



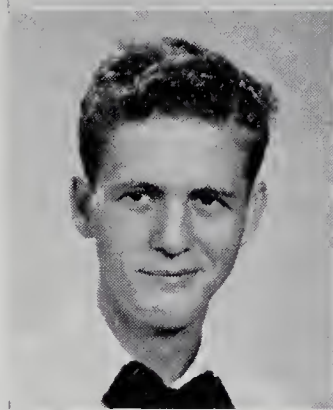
Frances Kay Guyer

4-H Club 1, 2, 3, 4, Secretary 3, Vice-President 4; F. H. A. Club 1, 2, 3, 4, Song Leader 2, 4, Secretary 3; Glee Club 3, 4; the Elk staff 4; Circulation Manager, the Elk Antler staff 4; Softball 2.



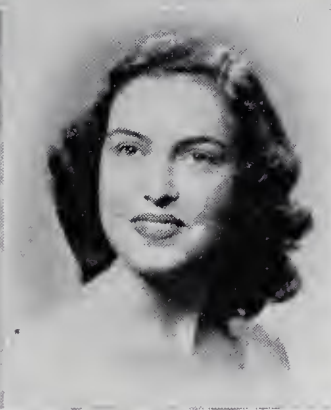
Errol Hall

Hi-Y Club 2, 3, 4, Secretary 4; Bi-Phy-Chem Club 2; Class Treasurer 3; Beta Club 3, 4; Treasurer 4; D.O. 4.



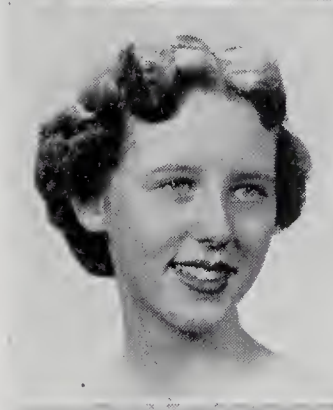
Betty Ellen Harris

Latin Club 2, Vice-President 2; Glee Club 4; Bi-Phy Chem Club 3.



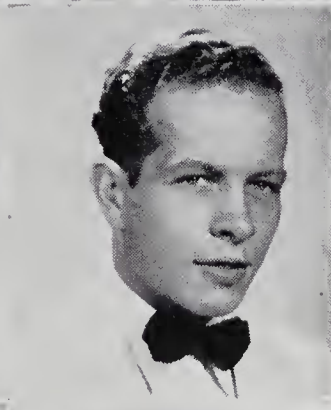
Cora Emaline Hayes

Marshal 3; Beta Club 3, 4; Bi-Phy-Chem Club 2, 3, 4, Vice-President 2, 3, Secretary 4; Debating 2, 3, 4, Vice-President 3, 4; Spanish Club 3, 4, Reporter 3; Tri-Hi-Y Club 2, 3, 4, Vice-President 4; Winner of American Legion Oratorical Contest, 2, 3, District Winner 2, Local Winner 2, 3; Winner of World Peace Oratorical Contest 3, District Winner 3; Office Assistant 3, 4; Glee Club 3, 4, Pianist 3, 4; Editor-in-Chief, the Elk staff 4; the Elk Antler staff 4; Inter-Club Council 4; Class Historian 4; World Peace District Representative to New York 3; Quill and Scroll 4.



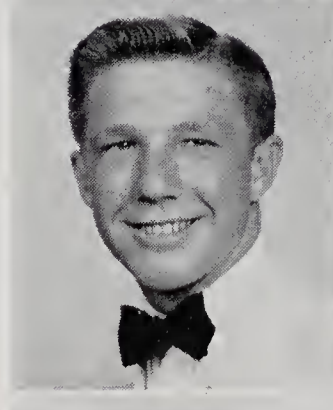
David Hayes

Basketball 2, Football 2, Track 3, 4-H Club 1, Glee Club 3, Hi-Y Club 2, D. O. 4.



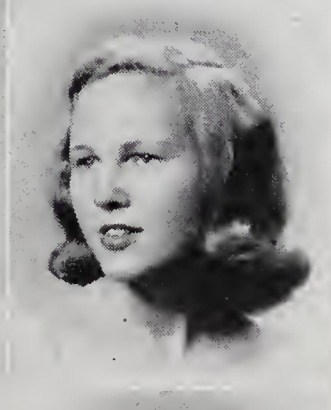
John D. Haynes

Class Secretary 1; Band 1, 2, 3, 4; Glee Club 4, Secretary-Treasurer 4; Baseball 2, 3, 4; Football 3, 4, Tri-Captain 4, Most Valuable Player 4, Honorable Mention All-Conference 4, Honorable Mention All-State 4; Basketball Manager 2, 3; Basketball 4; Class Treasurer 4; Hi-Y Club 2, 3, 4, Secretary 3, Sergeant at Arms 4; Bi-Phy-Chem Club 2; Monogram Club 2, 3, 4; Inter-Club Council 3, 4.



Shirley Lou Helton

Student Council 3, 4, Treasurer 4; Latin Club 2, 3, 4, Treasurer 2; Editor-in-Chief, the Elk Antler staff 4; Glee Club 3, 4; the Elk staff 4; Monogram Club 3, 4; Cheerleader 1, 2, 3, 4, Chief 3, 4; Tri-Hi-Y Club 2, 4; Beta Club 3, 4; Quill and Scroll 4.



Angelene Holbrook

Cheerleader 2, 3, 4; Tri-Hi-Y Club 2, 3, 4; Monogram Club 4; Glee Club 3, 4; Photography Editor, the Elk staff 4; the Elk Antler staff 4; Bi-Phy-Chem Club 3.



Bettie Jean Holbrook

Cheerleader 2, 3, 4; Monogram Club 4; Tri-Hi-Y Club 2, 3, 4, Chaplain 4; Inter-Club Council 4; Glee Club 4; Latin Club 3, 4; Sports Editor, the Elk Antler staff 4; the Elk staff 4; Softball 2.



Class of '53

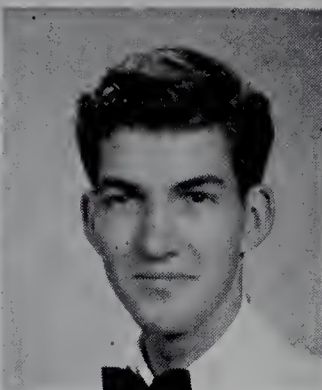
Patsy Holcomb

Basketball 2, 3; F. H. A. Club 3, 4; Glee Club 4.



Ronald Lee Jennings

Bi-Phy-Chem Club 2; 4-H Club 2; Basketball 2.



Georgia Jolley

Tri-Hi-Y Club 2, 3, 4; F. H. A. Club 1; Glee Club 3, 4; Fashion Editor, the Elk Antler staff 4; the Elk staff 4.



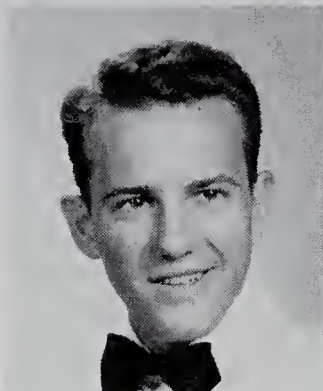
Faye Lawrence

The Elk staff 4; Exchange Editor, the Elk Antler staff 4.



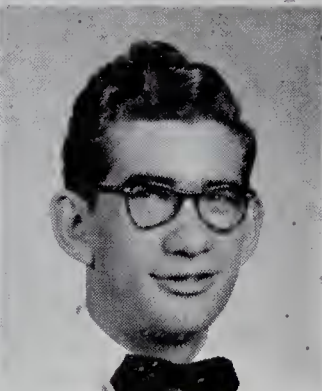
James Livingston Lowe, Jr.

Football 1, 2, 3, 4; Tri-Captain 4; Basketball 1, 2, 3, 4; Baseball 1, 2, 3, 4; Track 1, 2, 3, 4; Bi-Phy-Chem Club 2, 3, 4, Secretary 3; Latin Club 2, 3, 4; Hi-Y Club 2, 3, 4, Chaplain 3; Monogram Club 2, 3, 4, President 4; Mr. Elkin High 2; Class Vice-President 2; Class President 3; Boy's State 3; Ralph Ritchie Award 3; Student Council 3.



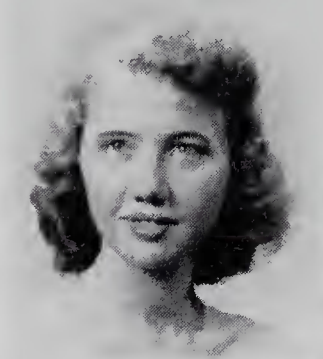
Cortez Gilbert Lowery

Baseball 4; Football 1, 2; Band 1, 2; Latin Club 2, 3, 4; Monogram Club 2, 3, 4; Student Council 3; Hi-Y Club 4; Bi-Phy-Chem Club 2, 3, 4; Basketball 1.



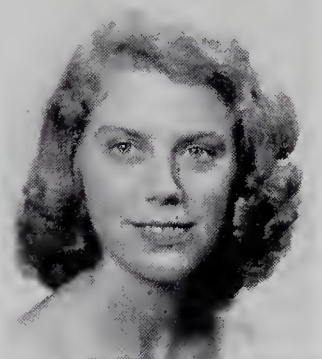
Shirley Lawrence Maines

Cheerleader 1, 2, 3; Basketball 1; Tri-Hi-Y Club 2, 3; Glee Club 4; Office Assistant 4; F. A. H. Club 1; the Elk Antler staff 4; the Elk staff 4; Senior Girl Scouts 1, 2, 3.



Mary Lou Martin

Basketball 1, 2; Tri-Hi-Y Club 1, 2, 4; Class President 2; Bi-Phy-Chem Club 2, 3; Band 2, 3, 4, President 4; Latin Club 3, 4; Beta Club 3, 4; Student Council 3; Monogram Club 4; Class Secretary 4.



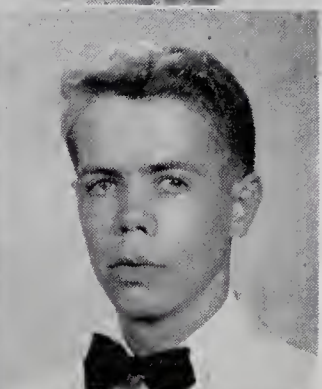
Patsy Lou Martin

Tri-Hi-Y Club 2, 4; Glee Club 3, 4; F. H. A. Club 3; Quill and Scroll 3, 4, President 4; Beta Club 3, 4; Art Editor, the Elk Antler staff 4, Assistant 3; Class Giftorian 4; the Elk staff 3, 4.



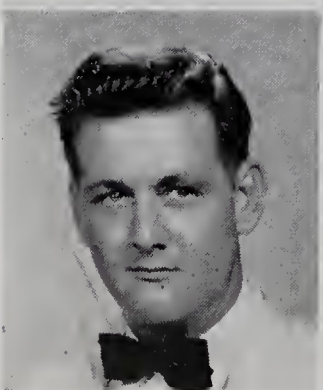
Richard Minish

Football 1, 2; Baseball 1, Manager 2; 4-H Club 1, 2; Hi-Y Club 3, 4, 5; Advertising Manager, the Elk staff 5; Glee Club 4, 5; Bi-Phy-Chem Club 4, 5; the Elk Antler staff 5.



Joseph Moore

Veteran; Ninety-Six High School 1; Hope Valley High School 2, 3; the Elk staff 4; Assistant Scout Master 4; the Elk Antler staff 4.



Kathryn Osborne

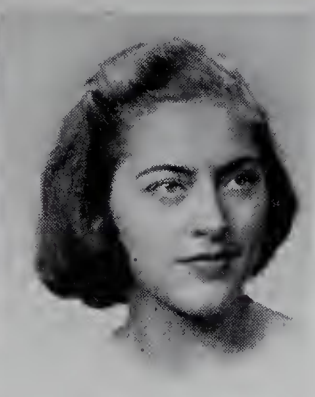
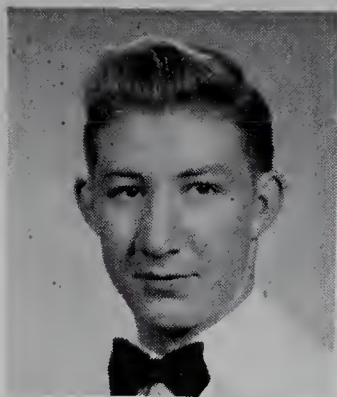
F. H. A. Club 1, 2; 4-H Club 2, 3, 4; Glee Club 3, 4; the Elk staff 4; Basketball Manager 1; Softball 2; the Elk Antler staff 4.



Class of '53

Thomas Bernard Phillips,
Jr.

Granite Falls High School 1; Hoke County High School 2, 3; Hi-Y Club 4; Bi-Phy-Chem 4; Assistant Business Manager, the Elk Antler staff 4; the Elk staff 4.

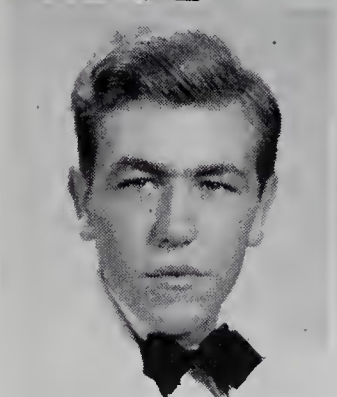


Polly Ann Price

Basketball 1, 2, 3; Monogram Club 2, 3, 4, Program Chairman 4; Beta Club 3, 4, Vice-President 4; Latin Club 2, 3, Program Chairman 2; Bi-Phy Chem Club 3; Debating Club 2, 3, 4, President 4; Tri-Hi-Y Club 2, 3, Secretary 3; Inter-Club Council 3, Reporter 3; Student Council 3, 4, Vice-President 3, Secretary 4; Student Store 3, 4; Feature Editor, the Elk Antler staff 4; the Elk staff 4; Band 2, Secretary 2; Class Poet 4; Student Council Congress 3; Senior Girl Scouts 1, 2, 3, 4; President 1, 3, Vice-President 2, Secretary 4; Quill and Scroll 4; Honorable Mention All-State Basketball 1; Honorable Mention All-Conference 1.

Bobby Reinhardt

Basketball 1, 2, 4; Glee Club 3; 4-H Club 2; Hi-Y Club 2; D. O. 4.

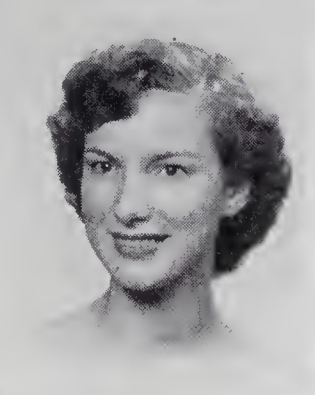
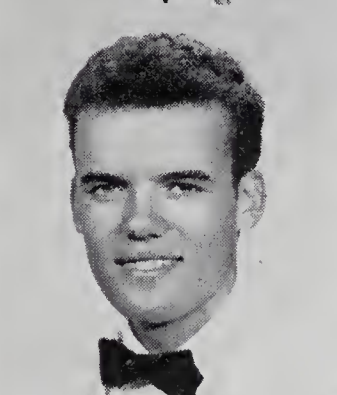


Frances Ann Russell

Basketball 1, 2, 3, 4; Monogram Club 2, 3, 4; Tri-Hi-Y Club 2, 3, 4; Glee Club 4; Latin Club 2, 3, Reporter 3; Bi-Phy-Chem Club 2, 3; Library Assistant 1, 4.

Donald Settle

Traphill High School 1, 2; D. O. 4.

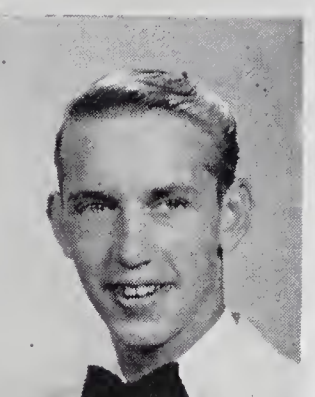


Virginia Pardue Shoemaker

F. H. A. Club 1; Glee Club 3, 4; the Elk Antler staff 4; the Elk staff 4.

Barbara Jean Sofley

Basketball 1, 2; Glee Club 3; D. O. 4.

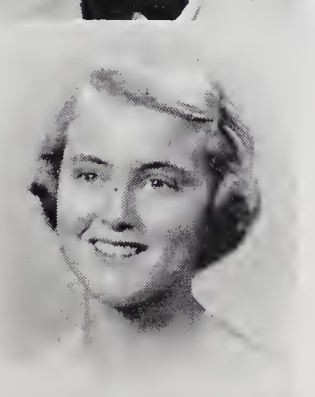
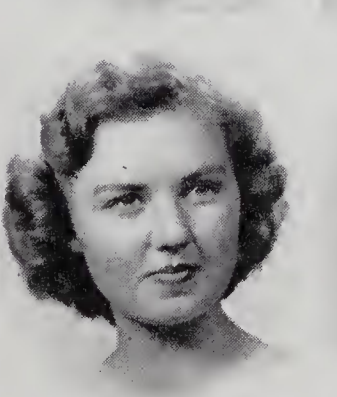


Tommy Sprinkle

Football 2, 4, Tri-Captain 4; Baseball 2, 3, 4; Glee Club 3, 4; Hi-Y Club 2, 3, 4; Monogram Club 2, 3, 4; the Elk staff 4; Fashion Editor, the Elk Antler staff 4.

Alice Delores Stephens

Elkland High School 1, 2, 3; Beta Club 4; Tri-Hi-Y Club 4; Band 4; Glee Club 4.

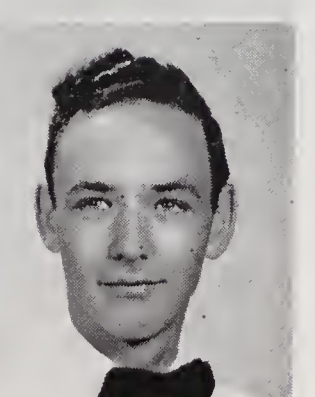


Carolyn Josephine Stuart

Library Assistant 1; Basketball 1; Band 1, 2, Western North Carolina All-State Band 1; Bi-Phy-Chem Club 2, 3, Treasurer 2; Debating Club 2; Latin Club 2, 3, 4; Tri-Hi-Y Club 2, 3, 4; Senior Girl Scouts 1, 2, 3, 4, Treasurer 1, Reporter 2, Vice-President 3, President 4, North Carolina Representative to 1952 All-State National Senior Girl Scout Encampment at Cody, Wyoming; Monogram Club 3, 4, Treasurer 4.

Betty Ann Thomasson

Tri-Hi-Y Club 2, 3; Glee Club 4; Bi-Phy-Chem Club 2, 3; Latin Club 2.



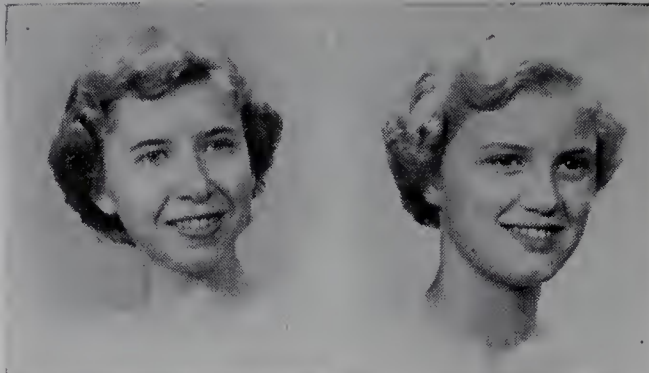
Archie Tucker

Baseball 1, 2; the Elk staff 3; the Elk Antler staff 3; D. O. 4.

Class of '53

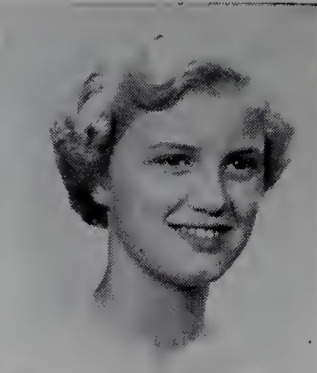
Wanda Tulbert

Tri-Hi-Y Club 2, 3, 4; Cheerleader 2, 3, 4; F. H. A. Club 1, 2, Historian 1, 2; Glee Club 3, 4, President 4; Monogram Club 4; Spanish Club 3, 4; Student Council 4; the Elk staff 4; Associate News Editor, the Elk Antler staff 4.



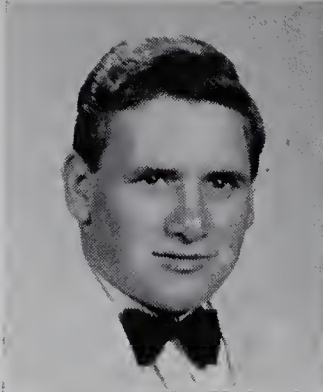
Emaline Mitchell Vestal

Cheerleader 1, 2, 3; Tri-Hi-Y Club 2, 3, Chaplain 3; Class Secretary 2; Student Council 3; Glee Club 3; Monogram Club 3, 4; D. O. 4.



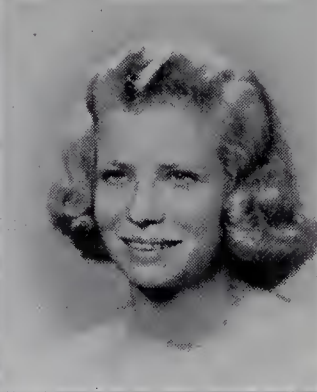
Charles Mickey Wagoner

Football 1, 2, 3, Student Coach 4; Basketball 1, 2, 3, Student Coach 4; Monogram Club 1, 2, 3, 4; Track 1, 2, 3; 4-H Club 1; Glee Club 3; Hi-Y Club 2, 3, 4; Bi-Phy-Chem Club 2, 3, President 3; Baseball 1, 2, 3; Student Coach 4; D. O. 4.



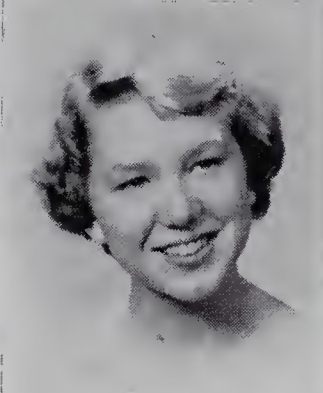
Lois Mae Wagoner

F. H. A. Club 2, 3, 4, Treasurer 4; Glee Club 4; Office Assistant 3, 4; Spanish Club 3, 4; Softball 2; Beta Club 4; Tri-Hi-Y Club 4; Bi-Phy-Chem Club 2, 4; 4-H Club 2, 3, 4.



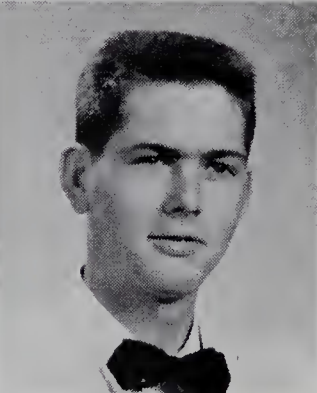
Janet Joan Walker

Basketball 2, 3, 4; Cheerleader 1, 2, 3; Monogram Club 4; Beta Club 3, 4; Latin Club 2, 3, 4; Glee Club 3, 4; Tri-Hi-Y Club 2, 3, 4; F. H. A. Club 1; Marshal 3; Class Prophet 4.



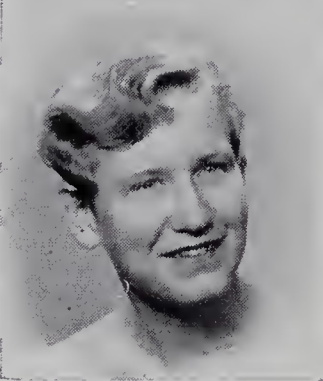
Henry Clay Walters

Baseball 1, 3; Basketball 1, 2, 3; Monogram Club 4; the Elk staff 4; the Elk Antler staff 4.



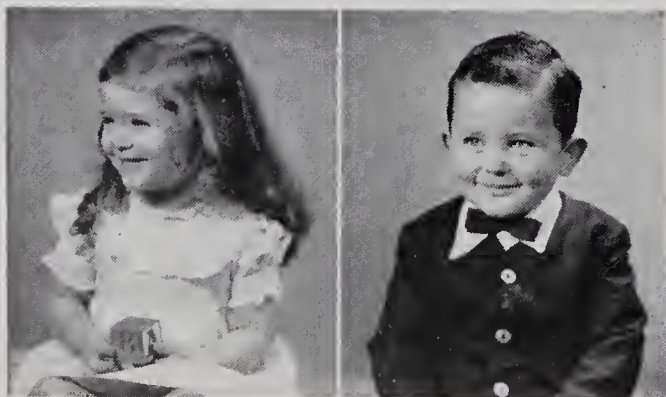
Patricia Ann Williams

West Yadkin High School 1; F. H. A. Club 3, 4; 4-H Club 3, 4; Glee Club 3; Tri-Hi-Y Club 2; D. O. 4.



Faye Wilmoth

F. H. A. Club 1; Tri-Hi-Y Club 2, 3, 4; Glee Club 3, 4, Vice-President 4; Associate Editor, the Elk Antler staff 4; the Elk staff 4; Class Testator 4.



MASCOTS

Holly Ann Couch

Timmie Byrd



A NIGHT TO REMEMBER—THE '52 JUNIOR-SENIOR



Most original
 Polly Price
 Charles Ashby

Most intelligent
 Mabel Brinegar
 Fred Eidson

**S
U
P
E
R
L
A
T
I
V
E
S**

Most apt to succeed
 Charles Edwards
 Emaline Hayes

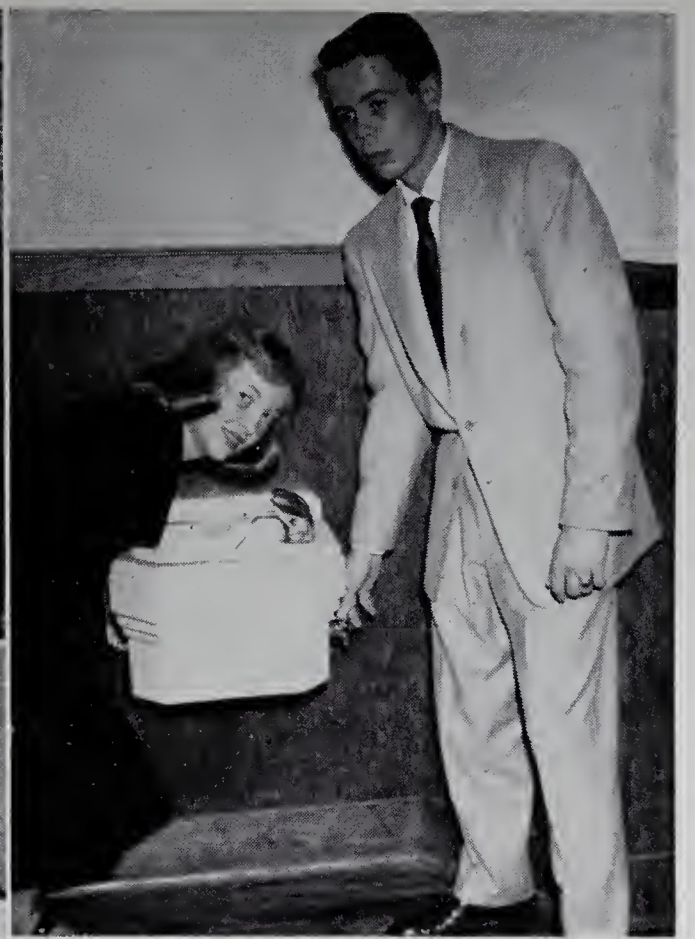


Best athlete
 Frances Russell
 John D. Haynes

Best personality
 Shirley Helton
 Ken Bryant

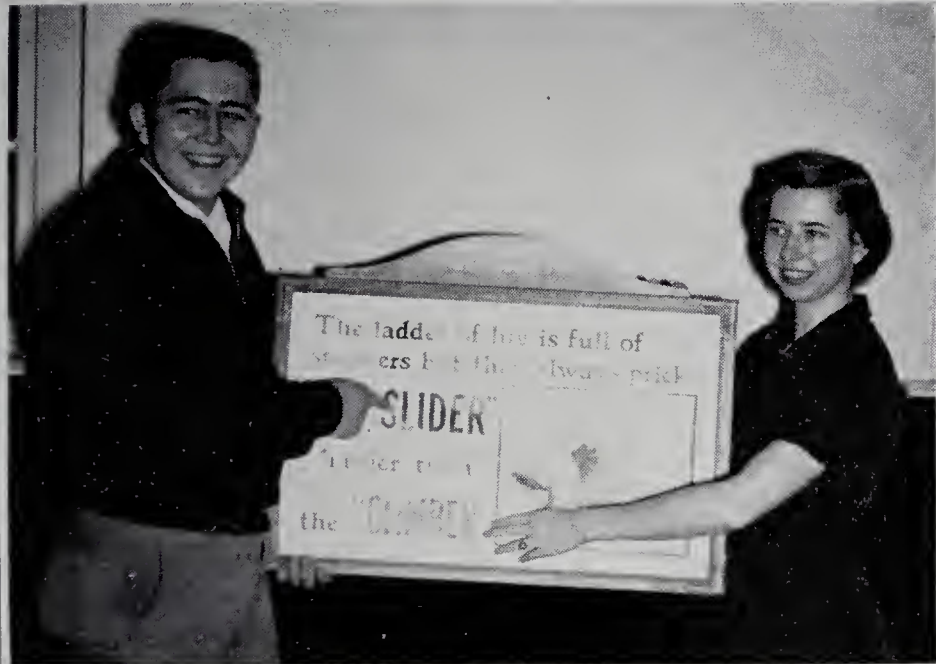
Best all-around

Janet Walker
J. L. Lowe



Best mannered

June Gentry
Dickie Minish



Wittiest

Roger Collins
Wanda Tulbert

SUPERLATIVES

Friendliest

Kitty Cranford
Jack Gentry

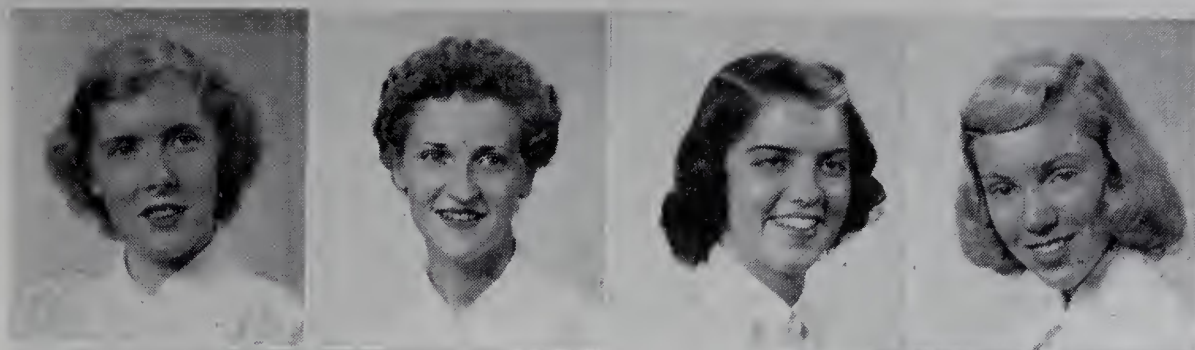


Most sportsmanlike

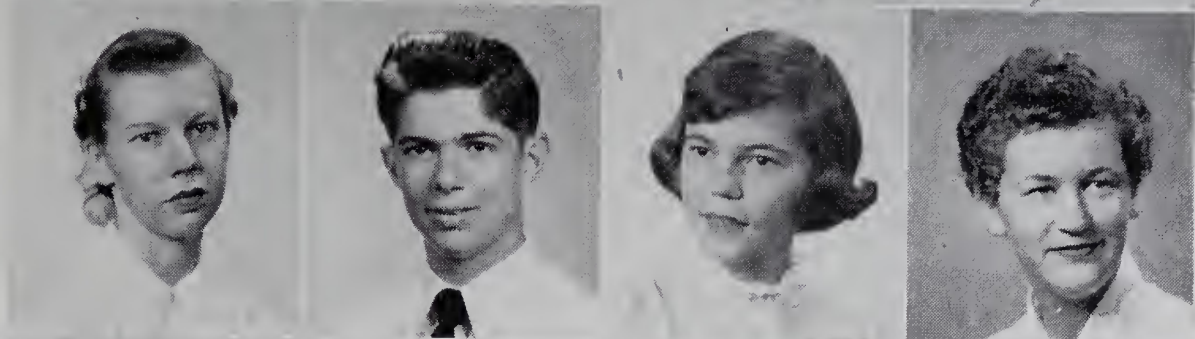
Caryl Guth
Henry Walters

Class of '54

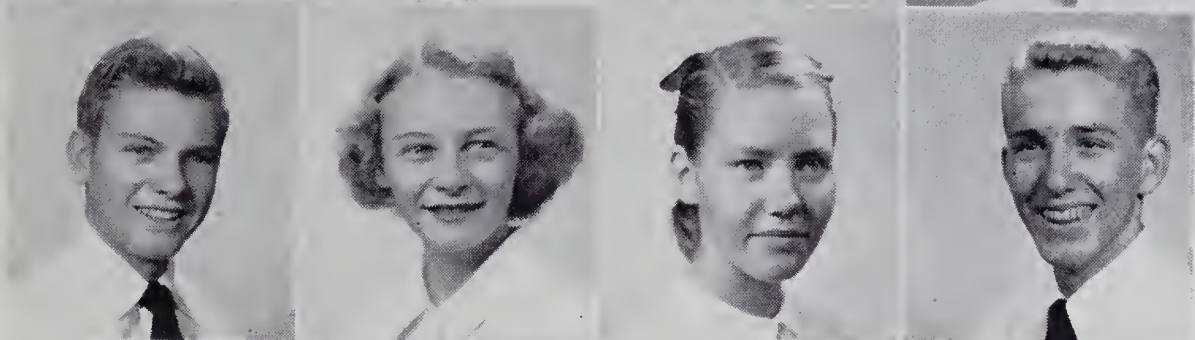
Dorothy Barker
 Velda Blackburn
 Jane Boyles
 Jackie Brown



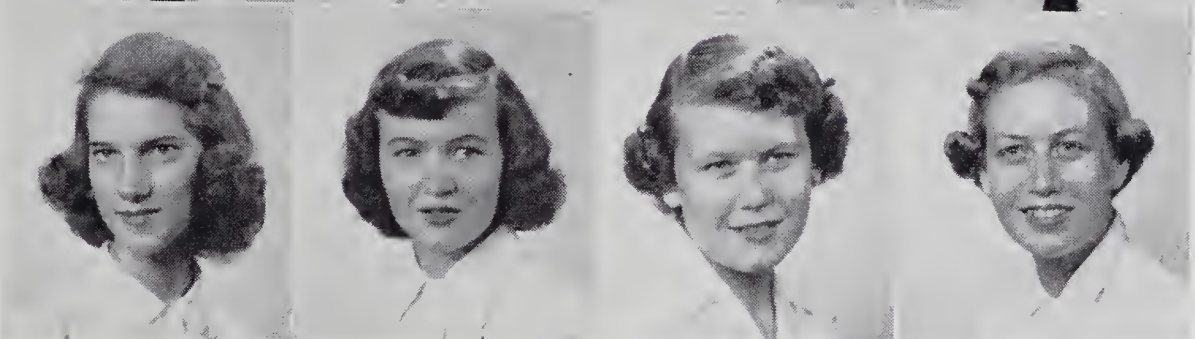
Martha Bruce
 Roland Bumgarner
 Janice Butner
 Frances Byrd



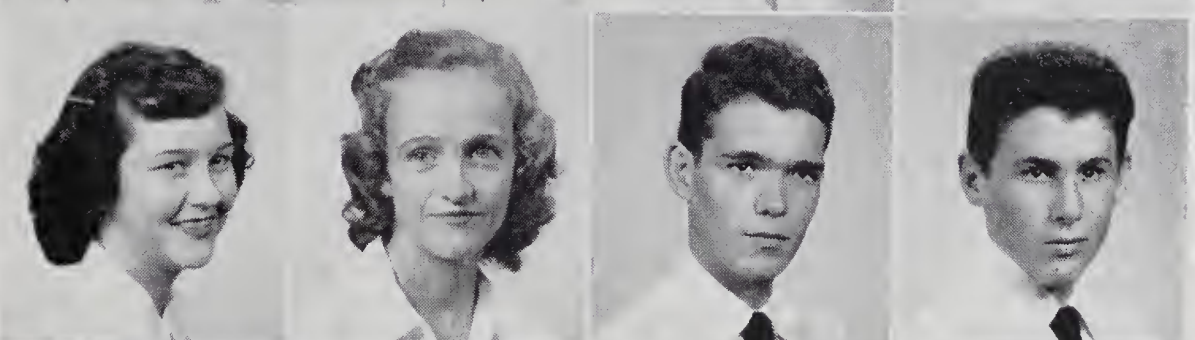
Dickie Caudle
 Helen Chatman
 Nancy Cockerham
 Sammy Cockerham



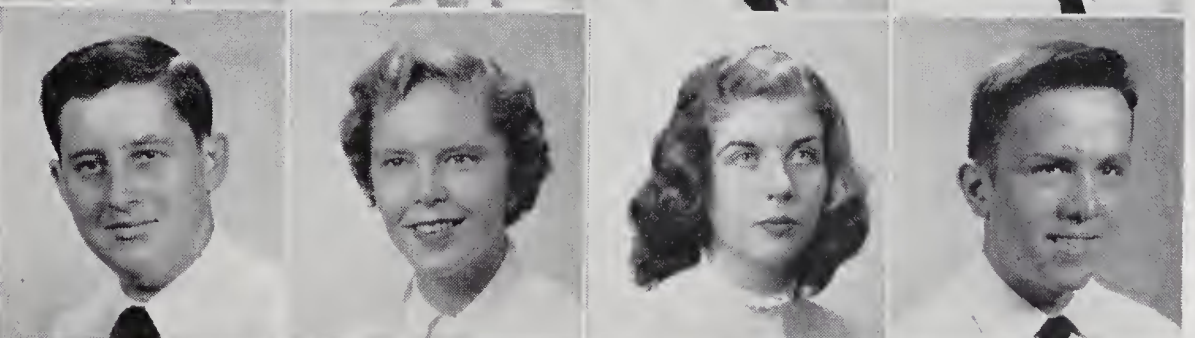
Maxine Collins
 Peggy Collins
 Barbara L. Cooper
 Mildred Cooper



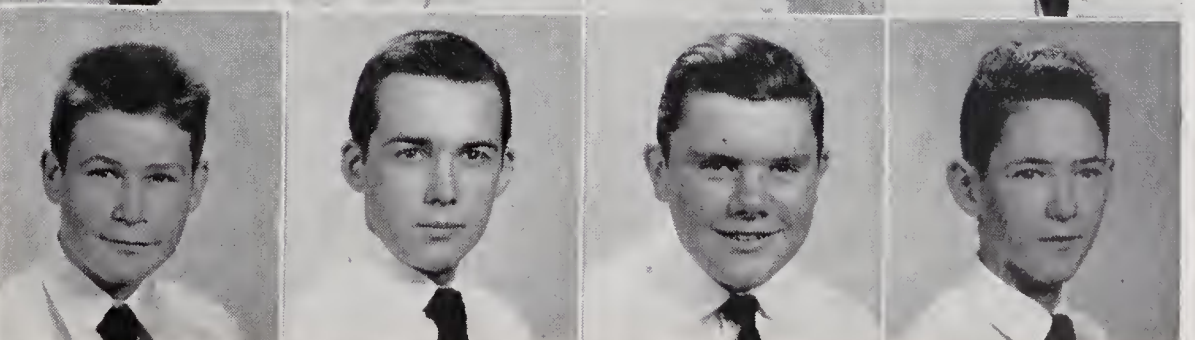
Ailene Couch
 Jo Ann Couch
 Jim Darnell
 John Davis



Clifton DeBorde
 Betty Gail Disher
 Violet Durham
 Kay Farrell



Jack Ferreira
 Tommy Finney
 Miner Flynt
 Bobby Gentry



Class of '54



Norma Gentry
Carol Gilliam
Robert Graham
Mary Guyer

Tony Hanks
Peggie Harmon
Lee Harpe
Clyde Hayes

Edith Hayes
Steve Hinshaw
Joan Hudson
Nola Hutchins

Doris Ingool
Ruthie Jackson
Larry James
Charles Johnson

Joe Journey
Joe Layell
Thelma Luffman
Parks McBride

Phyllis Maines
Donald Marshall
Sylvia Martin
Rex Mastin

Loretta Miller
Betty Nixon
Murphy Osborne
Ellen Poplin

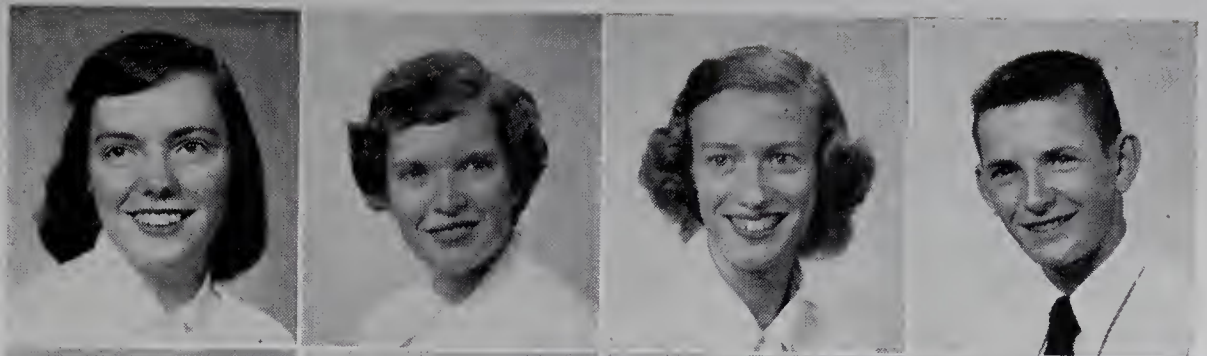
Class of '54

Jane Poplin

June Pruitt

Edith Ray

Jimmy Ring

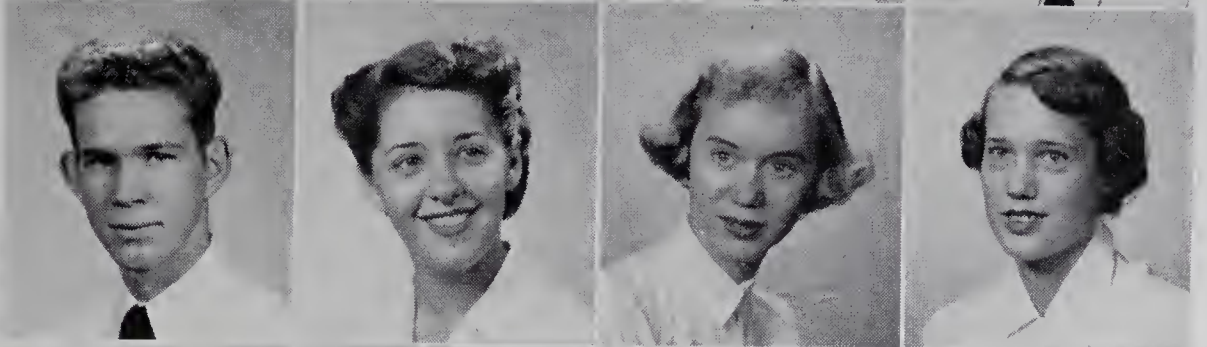


Jimmy Rogers

Pat Seagraves

Lana Settle

Maxine Settle

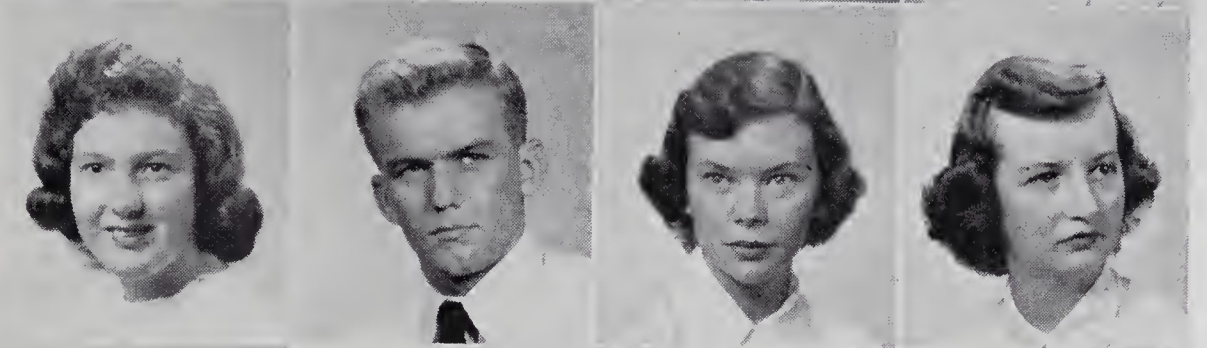


Margaret Shepherd

Nicky Shore

Jackie Sloop

Mary Lois Smith

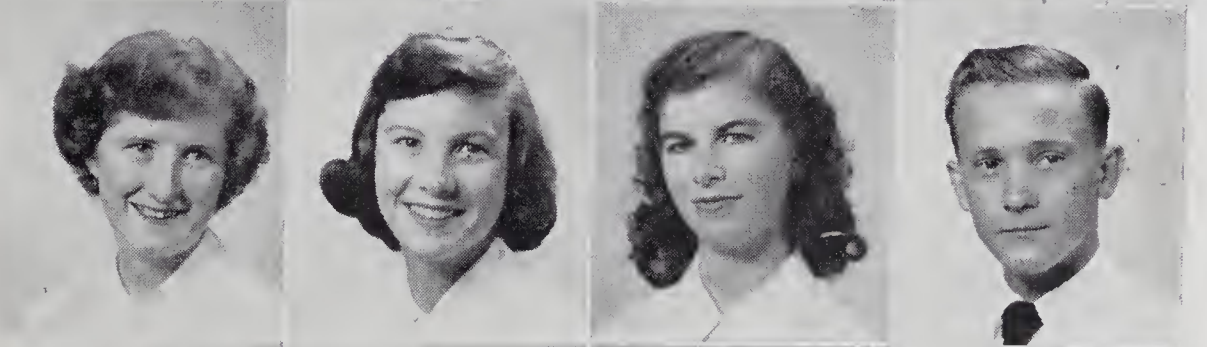


Patsy Sofley

Linda Southard

Jo Ann Teague

Roy Teague

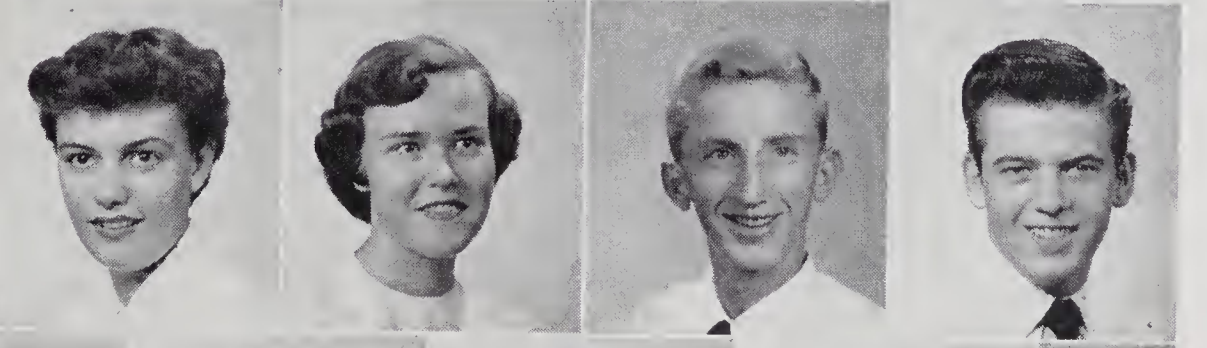


Billie Ann Tinsley

Gailya Tucker

Hollis Tucker

Buddy Vestal

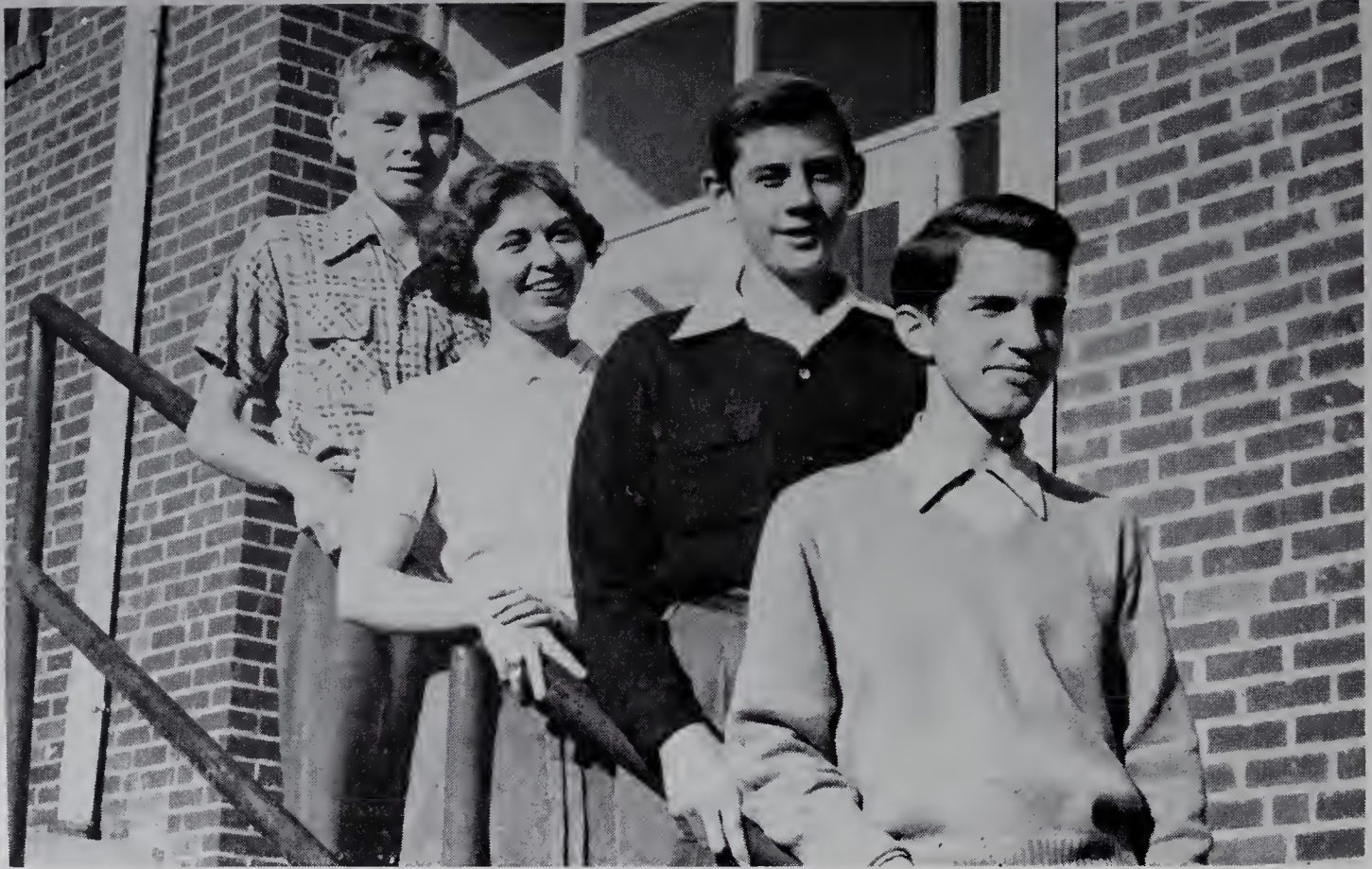


Chalmer Waters

Pat Windsor

Donald Yarboro





CLASS of '55

OFFICERS

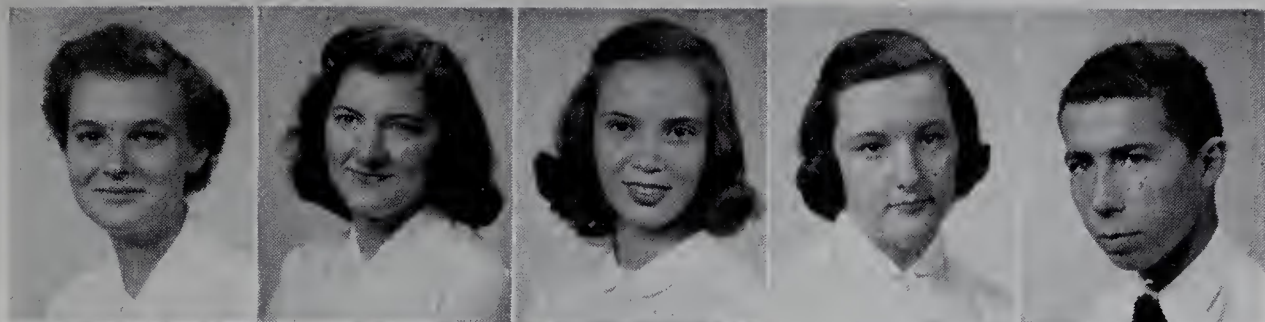
Felix Yarboro	<i>President</i>
Lyndon DeBorde	<i>Vice-President</i>
Jeane Smitherman	<i>Secretary</i>
Dick Hodel	<i>Treasurer</i>

**SOPHOMORE
CLASS**



Class of '55

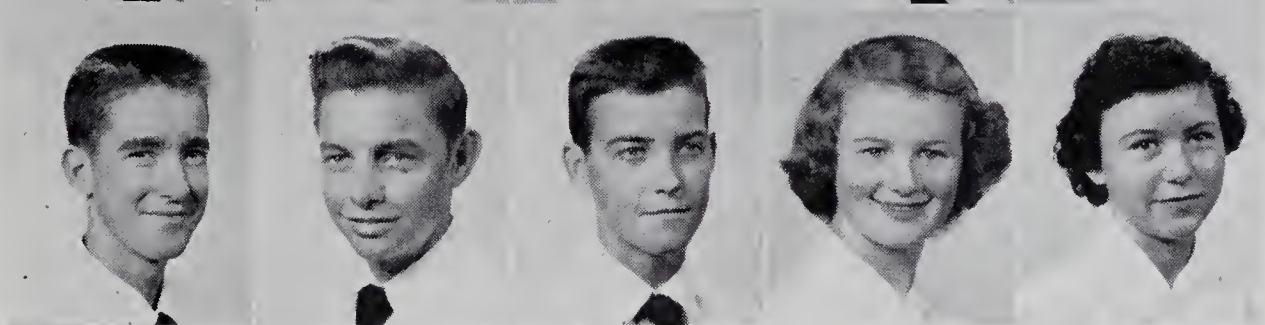
Barbara Adams
 Rena Adams
 Betsy Ball
 Kay Beulin
 Jimmy Bivins



Edward Blackburn
 Rita Blackburn
 Melba Blevins
 Jimmy Bradley
 Alyce Braxton



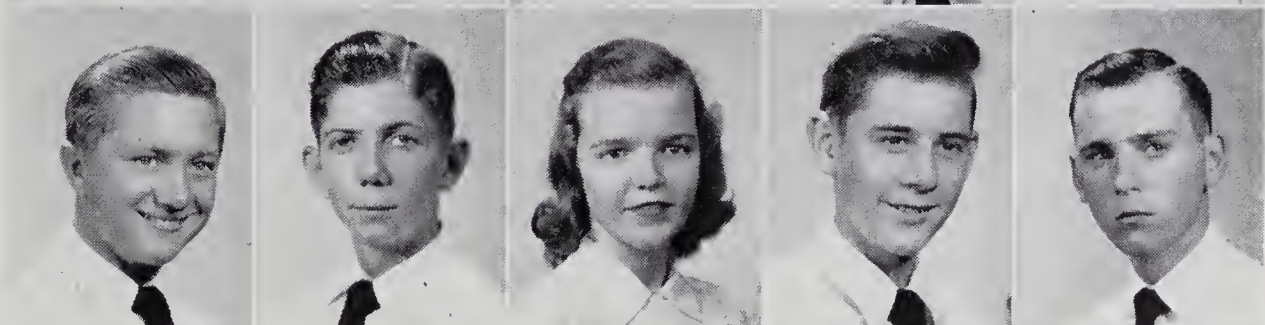
Walter Burch
 Billy Frank Carter
 Donald Carter
 Glenda Leigh Caudle
 Wilma Cheek



Betty Childress
 Wilma Chipman
 Evelyn Cleary
 Bud Collins
 Shelby Jean Couch



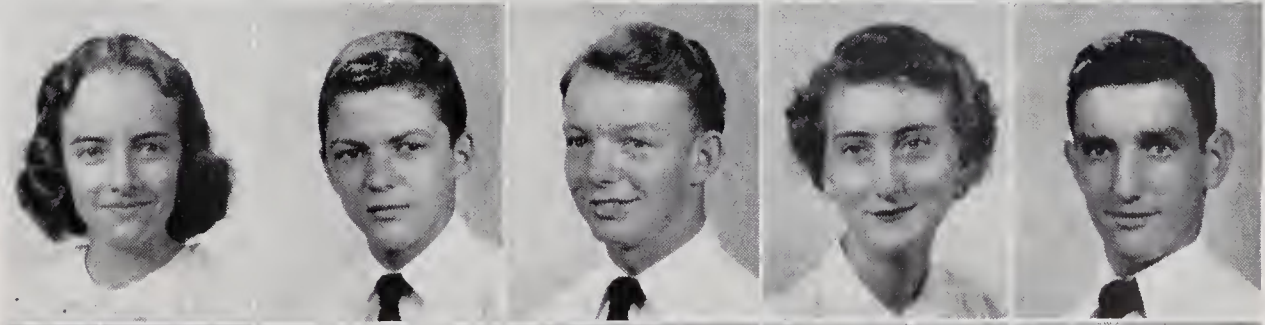
Bobby Darnell
 Gray Darnell
 Nancy Darnell
 Lyndon DeBorde
 Bill Edwards



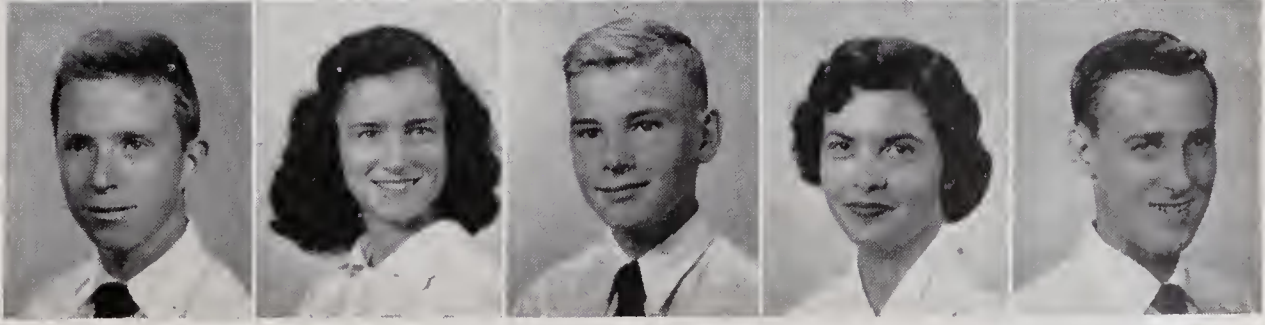
Howard Felts
 Margaret Fletcher
 Vicky Franklin
 Billy Joe Gentry
 Wendell Guth



Dolly Guyer
 Allen Hall
 Henry Hampton
 Clara Haynes
 Bruce Hinson



Harold Hinson
 Jane Hinson
 Dick Hodel
 Dorothy Hodges
 Bud Holcomb



Class of '55



Josie Irvin
 Annie Sue Jackson
 Linda Jennings
 Jimmy Jolley
 Donald Koontz

Mary Ann Laffoon
 Dolores Lipford
 Mary Ann Long
 Glenda Ruth Lowe
 Anice Lyon

Eddie Martin
 Melvin McBride
 Billy McCoin
 Pat Mitchell
 Barbara Newman

Junior Newman
 Nellie Newman
 Allen Osborne
 Watana Owens
 Doris Park

Marilyn Park
 Ruby Park
 Joe Price
 Donna Raye
 Bobby Roth

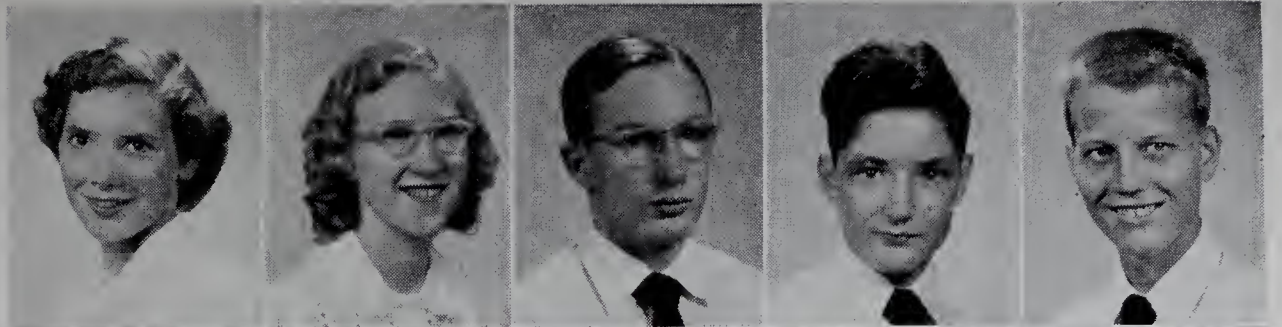
Barbara Sale
 Larry Simmons
 Jimmy Sloop
 Rose Marie Smith
 Jeane Smitherman

Arlie Stanley
 Ferrell Stroud
 Barbara Swaim
 Nancy Swaim
 Jimmy Taylor

Marquita Thomas
 Billy Transou
 Ralph Triplette, Jr.
 Lorene Tucker
 Bill Tulbert

Class of '55

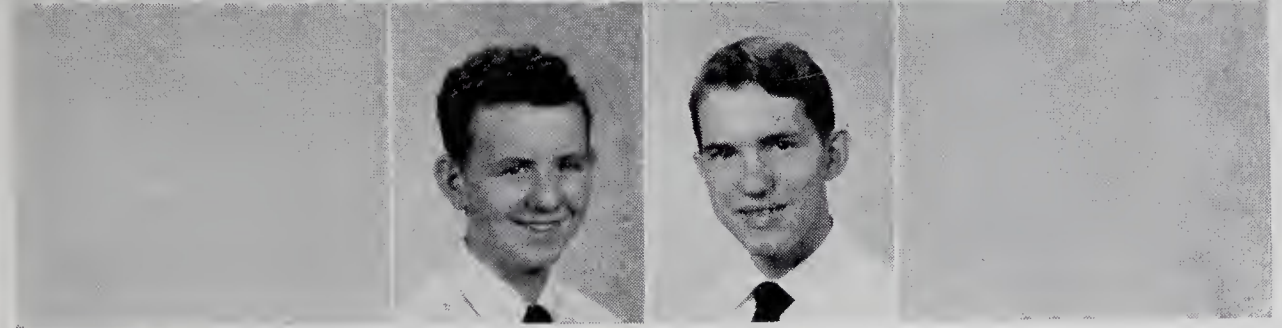
Dolores Wagoner
Shelba Wagoner
Bennie Ward
Charlie Waters
DeVon Weatherman



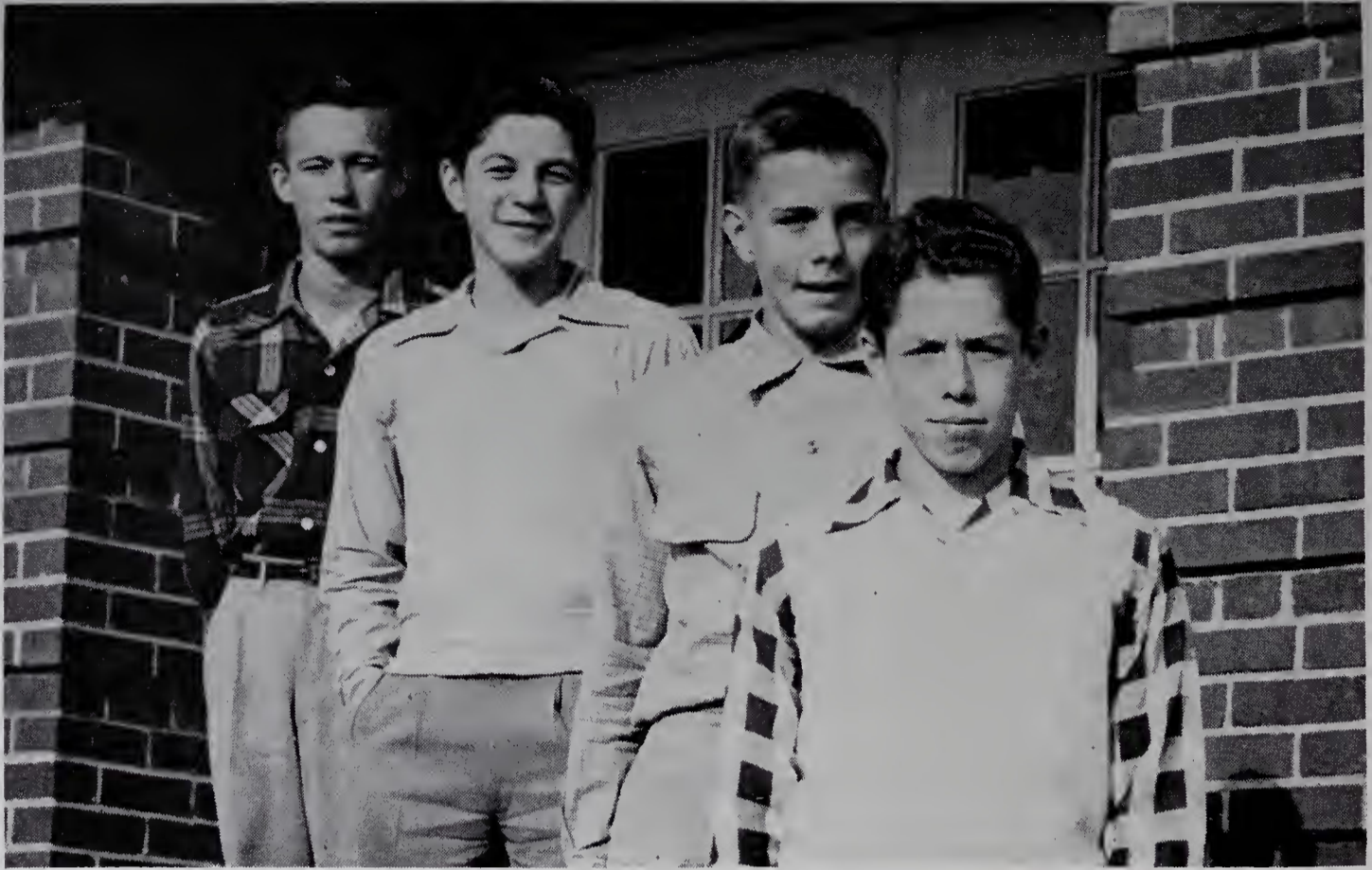
Vonda Weatherman
Bonnie West
Frances West
Betty Williams
Charles Wilmoth



Jimmy Woodruff
Felix Yarboro



"ONCE UPON A TIME, THERE WAS AN AMOEBA."



CLASS of '56

OFFICERS

Eddie Carter *President*
Buddy Farrell *Vice-President*
Charles Walters *Secretary*
Harvey Settle *Treasurer*



FRESHMAN CLASS

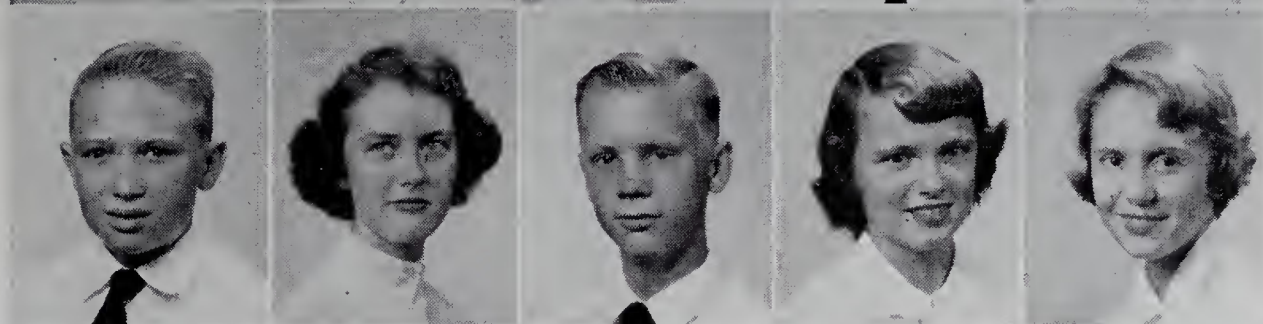


Class of '56

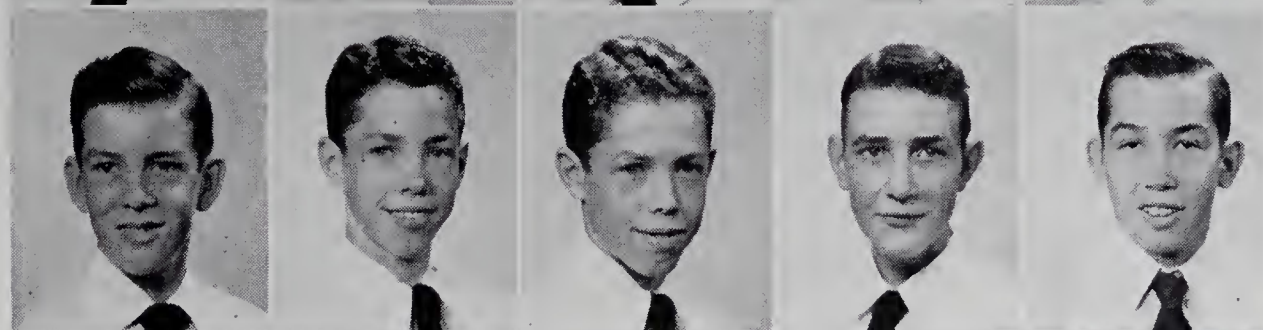
Nancy Adams
 Betsy Ashby
 Minnie Lou Atkins
 John Beale
 Doris Blackburn



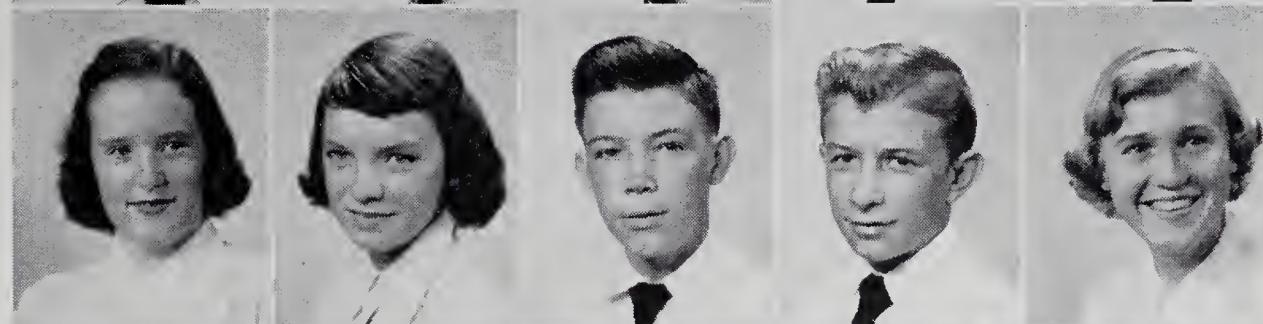
Joe Blackburn
 Martha Blevins
 Cheslie Brinegar
 Carole Brown
 Phyllis Brown



Billy Bruce
 Bobby Carter
 Eddie Carter
 Stephen Carter
 Donald Cass



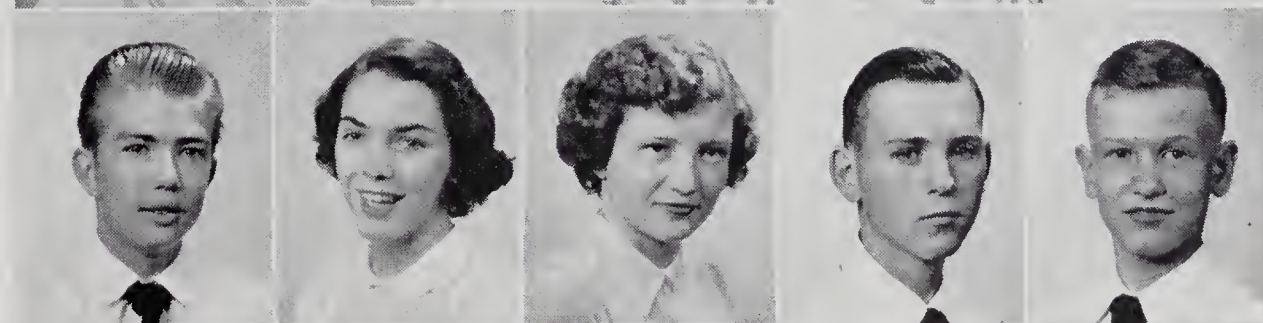
Pat Cass
 Rita Caudle
 Tony Chipman
 Mackie Cockerham
 Barbara Kay Cooper



Emelene Corder
 Linda Couch
 Jo Ann Darnell
 Ruby Darnell
 Abbye Davis



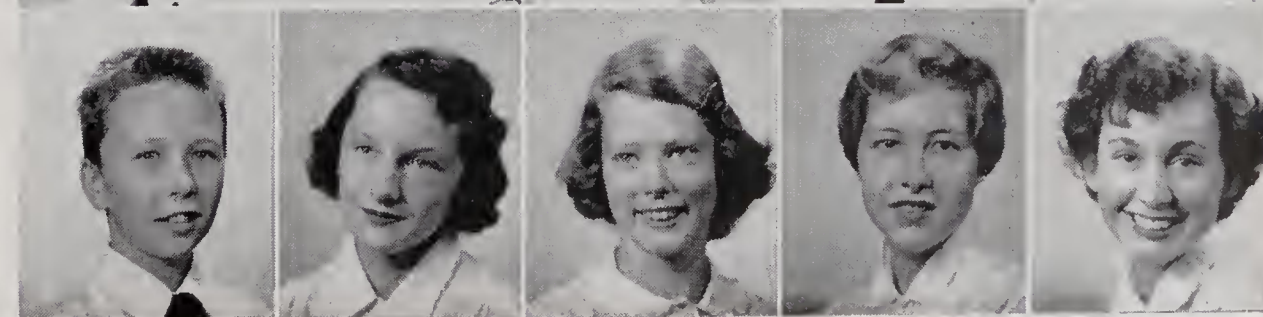
John Daye
 Dixie Draughn
 Mary Dudley
 Jim Edwards
 Sammy Elmore



Buddy Farrell
 Barbara Felts
 Linda Ford
 Odell Gambill
 Sharon Gentry



Chris Glenn
 Helen Graham
 Patsy Guyer
 Pat Harris
 Mary Frances Hart



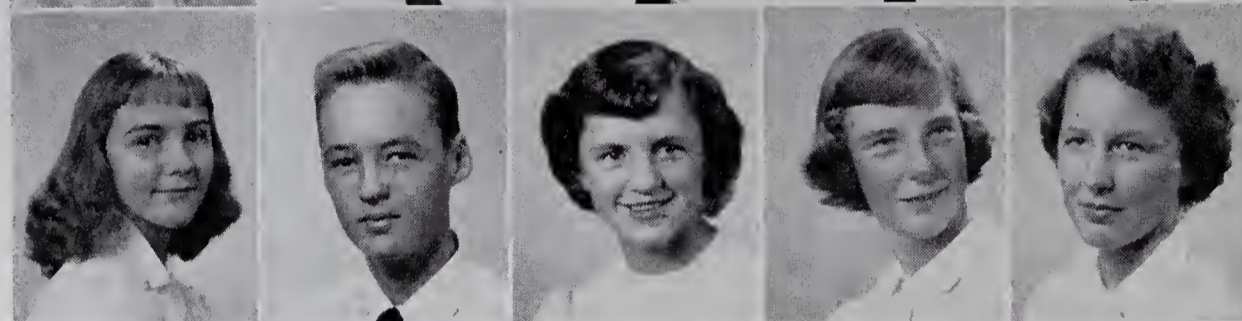
Class of '56



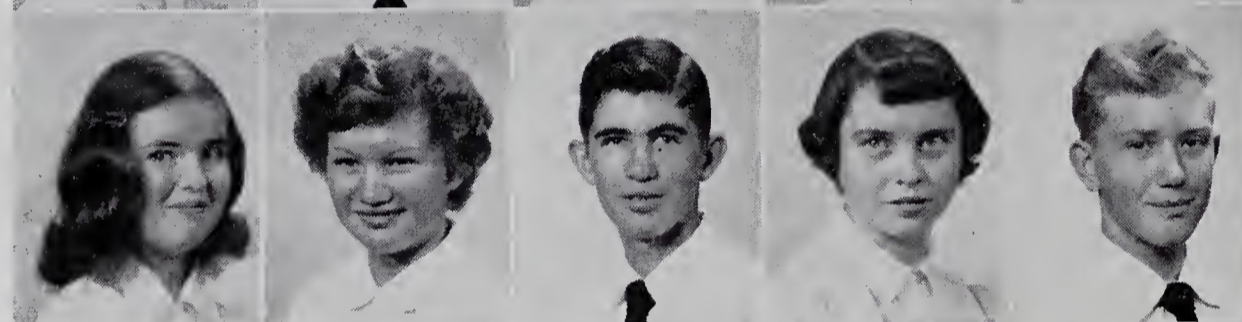
Colvin Hege
Melinda Helton
Lottie Hemric
Anne Hine
Emma Lee Holbrook



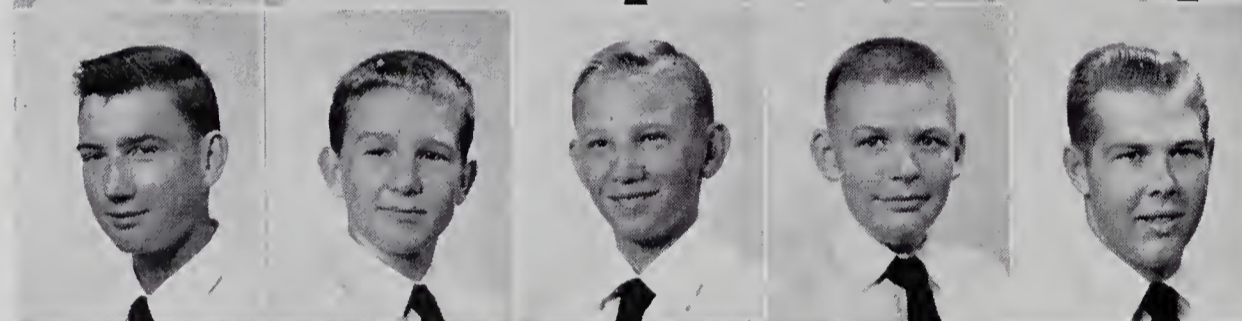
Georgia Holcomb
Tommy Holcomb
J. W. Ingool
Jerry James
Rex Judd



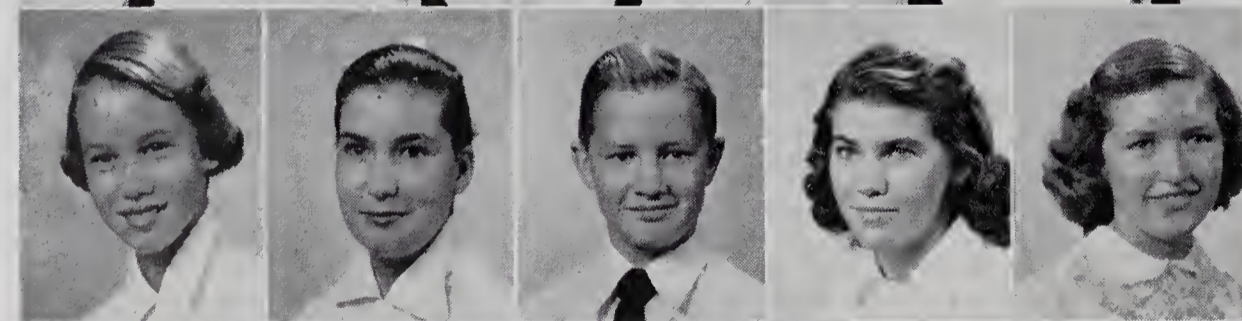
Louise Kimmer
Roy King
Jean Konkle
Dorothy Lanning
Sybille Lawrence



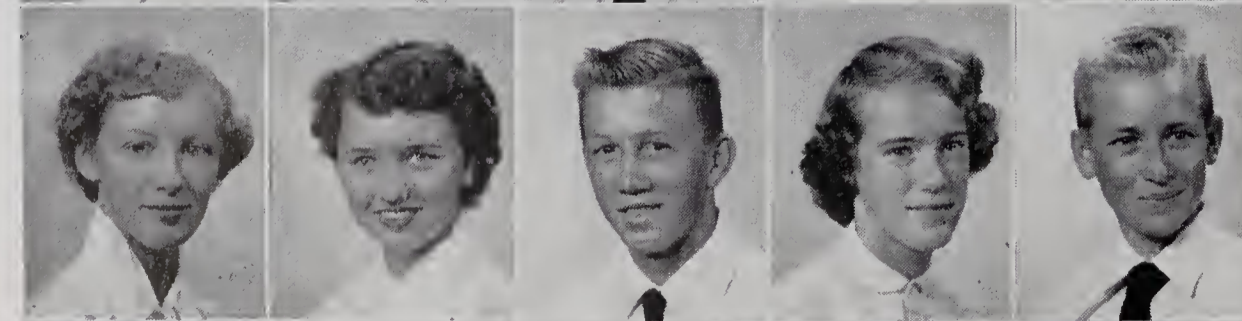
Louise Laxton
Nancy Lyon
Johnny Martin
Nancy Martin
Ted Mastin



Grady Mickle
Jakie Mullis
David Myers
Kedron Norman
Reece Osborne



Betty Ann Parker
Sandra Pennell
Benny Phillips
Peggy Porter
Betty Jean Prevetie



Sally Ray
Shirley Renegar
Phillip Royall
Elizabeth Settle
Farrell Settle



Hilda Sloop
Harry Smith
Carrie Bet Smoot
Karen Sprinkle
Deanna Stuart

Class of '56

Jack Tatum

Melvin Thompson

Leamon Transou

Clara Tucker

Ruby Tucker

Phyllis Vanhoy

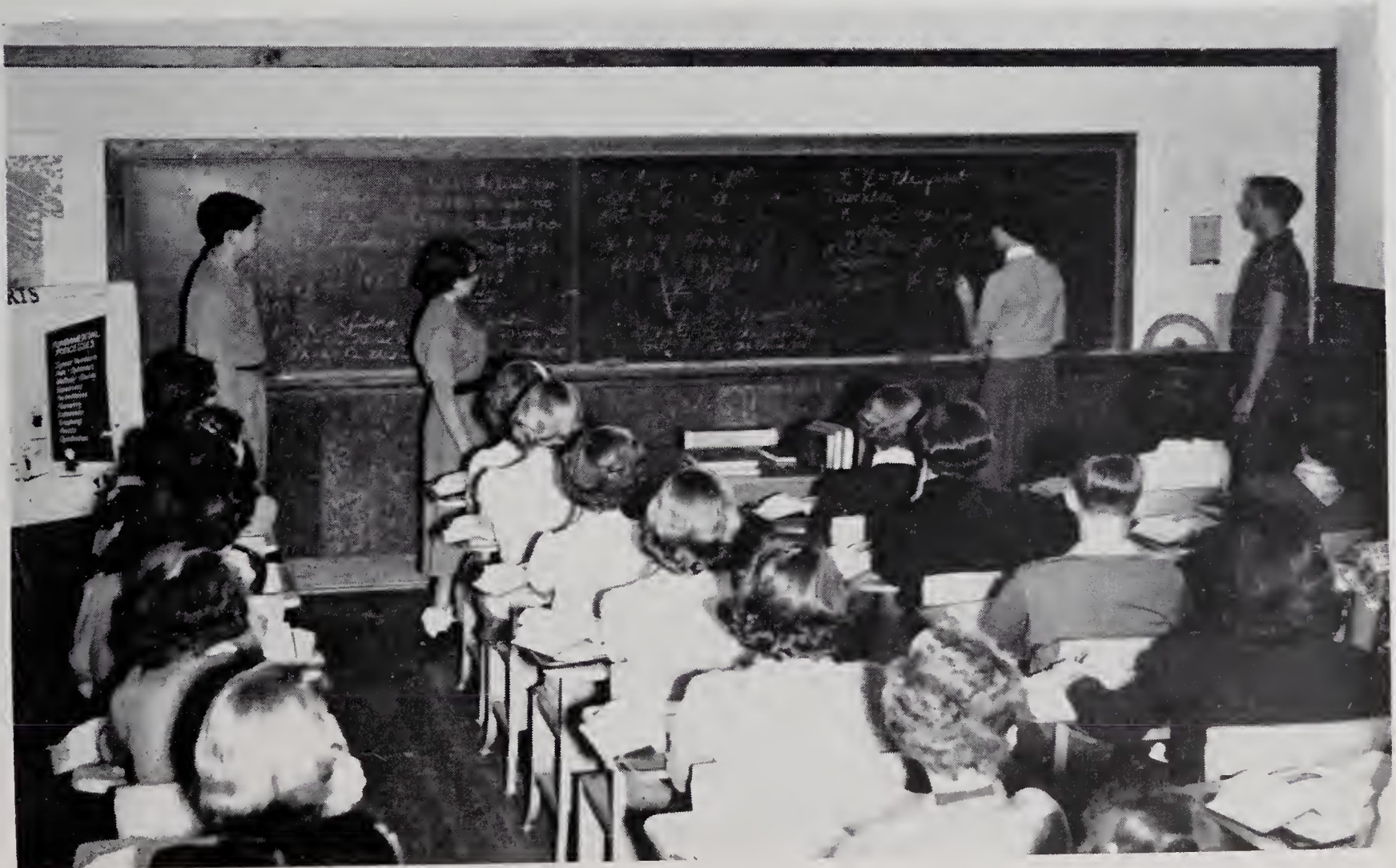
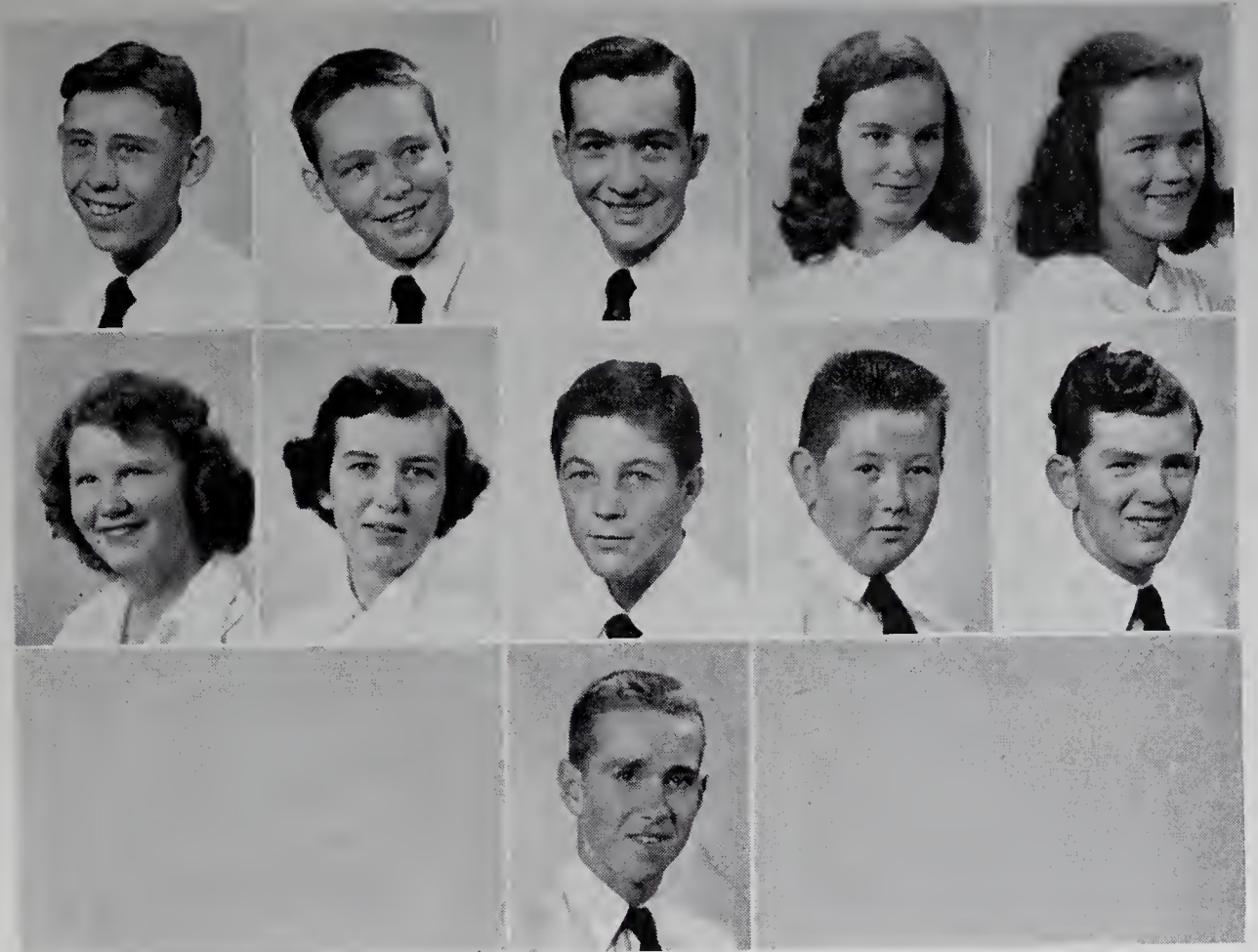
Linda Walker

Charles Walters

Sammy Walters

Donald White

Franklin Williams



"IF X EQUALS 5, THEN_____."

CLASS of '57



Mrs. Foster's Eighth Grade

First Row: Sylvia Money, Elizabeth Harpe, Albert Rose, Gary Holbrook, Nancy Atkins, Joan Teague, Betty Ruth Byrd, Linda Cooper. ● *Second Row:* Mike Carpenter, Phillip Hinshaw, Eva Barker, Jean Wetherman, Carol Southard, Magdalene Marsh, Donna Maines, Vinie Church, Billy Eidson. ● *Third Row:* Garvey Dameron, Barbara Alexander, Brent Sparks, Junior Tillery, Pat Guyer, Harold Walters, Patsy Wagoner, Norma Shoaf. ● *Fourth Row:* Mrs. Joe Foster, adviser; Bill Davis; Jerry Steele; Kelly Billings.



Mrs. Pardue's Eighth Grade

First Row: Jo Ann Henderson, Jane Sneed, Evelyn Gentry, Sybrilla Caudle. ● *Second Row:* Melba Caudle, Gale Reeves, Norma Martin, Frankie Stewart, Ann Harris, Deanna Marshall, Helen Cranford, Brenda Vestal, Phyllis Lowe, Phyllis Allen. ● *Third Row:* Jerry Swift, Bill Davis, H. L. Wooten, Anthony Adams, Wayne Harris, Jr., Norman Stephens, Franklin White, Richard Royall, Burtle Teague. ● *Fourth Row:* Jay Braxton, Windell Yarboro, Cecil Chipman, Charlie Johnson, Harry Hensel, George Couch, Bobby Martin, Charles Martin, Bob Noe, Jimmy Finney.



Mrs. Shore's Eighth Grade

First Row: Dwight Cass, Johnny Eldridge, Bud Lanning, Clyde Hawkins, Sonny Simmons, Javann Royal, Linda Lyon, Helen Jackson, Remona Jackson, Pat Cockerham. ● *Second Row:* Jerry Lee Carter, Walter Brinegar, Benny Darnell, Carol Moody, Jean Hayes, Nancy Chappell, Myrtle Spann, Shirley Combs. ● *Third Row:* Wilbert McBride, Edward Collins, Mack Gentry, Katherine Hayes, Mary Ann Guyer, Carol Bengel, Ramona Waters. ● *Fourth Row:* Woodie Wiles, Algin Adams, Brent Johnson, Don Byrd.



ACTIVITIES



Student
Council



Beta
Club

STUDENT COUNCIL

"For E. H. S."

First Row: June Pruitt, Carrie Smoot, Shirley Helton, treasurer; Murphy Osborne, vice-president; Charles Edwards, president; Polly Price, secretary; Phillip Royall, Helen Cranford, Donna Maines. ● *Second Row:* Wanda Tulbert, Lorene Tucker, Mr. F. C. Schiebout, adviser; Jerry James, Charles Ashby, Kay Ferrell, Nicky Shore, Brent Johnson, Lyndon DeBorde, Felix Yarboro, Bob Noe.

BETA CLUB

"Pardon, your brains are showing."

First Row: Norma Gentry, Mildred Cooper, Joyce Cochrane, Thelma Luffman, Jane Boyles, Shirley Helton, Patsy Martin. ● *Second Row:* Mrs. Carl Calloway, adviser; Karen Bryant, Edith Hayes, Pat Windsor, Sylvia Martin, Joan Hudson, Billie Tinsley, Jackie Sloop, June Pruitt, Charles Ashby. ● *Third Row:* Lois Brooks, Janet Walker, Mary Martin, Ellen Poplin, Delores Stephens, Tommy Finney, June Gentry, Peggie Harmon, Edna Guyer, Pat Francis. ● *Fourth Row:* Jackie Brown, Sarah Boyles, secretary-treasurer; Caryl Guth, Polly Price, vice-president; Kay Farrell, Charles Edwards, Fred Eidson, president; Janice Butner, Lois Wagoner, Emaline Hayes.

Spanish
Club



Latin
Club



SPANISH CLUB

"Si, senior."

First Row: Pat Windsor, Doris Ingool, Jo Ann Couch, Wanda Tulbett. ● *Second Row:* Mrs. H. J. Royall, adviser; June Pruitt, Velda Blackburn, Edith Hayes, social chairman; Jackie Sloop, Edna Guyer, president; Charles Johnson, Barbara Cooper, Lee Harpe, Nola Hutchins. ● *Third Row:* Billie Ann Tinsley, Sylvia Martin, Lois Wagoner, Nancy Cockerham, Betty Gail Disher, June Gentry, Pat Francis, secretary; Emaline Hayes, Joan Hudson. ● *Fourth Row:* Jack Ferreira, Murphy Osborne, Jimmy Rogers, Rex Mastin, Sergeant at arms; Joe Jurney, treasurer; Roland Bumgarner, Tommy Finney, Sammy Cockerman, vice-president; Donald Marshall Bobby Graham.

LATIN CLUB

"Amo, amas, amat."

First Row: Felix Yarboro, treasurer; Mary Ann Long, secretary; Jeane Smitherman, Twinkle Jackson, Alyce Braxton, chaplain; Watana Owens, reporter; Janice Butner, Jackie Brown, Dick Hodel, president. ● *Second Row:* Ellen Poplin, Margaret Fletcher, Jane Boyles, Vickie Franklin, Pat Cass, Mary Frances Hart, Deanna Stuart, Abbye Davis, Barbara Sale, Kitty Cranford, Sarah Boyles. ● *Third Row:* Jack Tatum, Louise Laxton, Dorothy Barker, Mary Martin, Bettie Jean Holbrook, Glenda Lowe, Carole Brown, Betty Ann Parker, Betsy Ross Ashby, Carrie Bet Smoot, Miss Emma Cooke, adviser. ● *Fourth Row:* Phyllis Brown, Helen Graham, Linda Ford, Linda Walker, Ralphie Triplette, vice-president; Gilbert Lowery, Allen Hall, Wendell Guth, Jackie Mullis, Donald Koontz.



"We quilled and we scrolled."

THE ELK

First Row: Patsy Martin, art editor; Wanda Tulbert, assistant news editor; Betty Jean Felts, assistant circulation manager; Georgia Jolley, fashion editor. ● *Second Row:* Mrs. Adrian Nixon, adviser; Emaline Hayes, reporter; Patsy Francis, social editor; Edna Guyer, news editor; Faye Lawrence, exchange editor. ● *Third Row:* Roger Collins, assistant production manager; Polly Price, feature editor; Tommy Phillips, assistant business manager; Joe Moore, reporter.



"Behind the scenes."

"The Elk brain trust."



ANTLER STAFF



First Row: Lois Brooks, reporter; Anne Durham, assistant art editor; Bettie Jean Holbrook, sports editor; Shirley Helton, editor-in-chief; Angelene Holbrook, reporter. ● *Second Row:* Kay Guyer, circulation manager; Faye Wilmoth, associate editor; Kathryn Osborne, reporter; Dickie Minish, reporter. ● *Third Row:* Henry Walters, assistant production manager; Fred Eidson, business and production managers; Jack Gentry, reporter; Shirley Maines, reporter.

"Deadline met."





Marshals



Hi-Y

MARSHALS

"You're the tops."

First Row: June Pruitt. ● *Second Row:* Jane Boyles, chief; Sylvia Martin. ● *Third Row:* ● Jackie Brown, Janice Butner, Jackie Sloop.

HI-Y

"Spirit, mind, body."

First Row: Charles Ashby, president; Dick Hodel, Ralphie Triplette, Bennie Ward, Donald Koontz, J. L. Lowe, Gilbert Lowery, Roger Collins, treasurer; Charles Johnson. ● *Second Row:* Mr. Max Cooke, advisor; Mickey Wagoner, Sammy Cockerham, John D. Haynes, sergeant at arms; Murphy Osborne, Jack Gentry, John Davis, Larry James, Errol Hall, secretary; Dickie Minish. ● *Third Row:* Tommy Phillips, Edward Blackburn, Charles Edwards, Kay Farrell, Ken Bryant, Joe Journey, Rex Mastin, Allen Hall, Fred Eidson, vice-president.

Senior
Tri-Hi-Y
Club



Junior
Tri-Hi-Y
Club



SENIOR TRI-HI-Y CLUB

"High standards of Christian character."

First Row: Angelene Holbrook, Wanda Tulbert, Ailene Couch, Martha Bruce, Maxine Collins, Karen Bryant, Patsy Martin. ● *Second Row:* Georgia Jolley, Janet Walker, Jackie Sloop, Frances Russell, Kitty Cranford, president; Ellen Poplin, Sylvia Martin, Mary Martin, Billie Ann Tinsley, Emaline Hayes, vice-president; Pat Francis, Edna Guyer. ● *Third Row:* Miss Betty Lineberry, adviser; Dorothy Barker, Edith Hayes, Carol Gilliam, Lois Brooks, Joan Hudson, Carol Stuart, Jane Boyles, treasurer; Shirley Helton, Barbara Cooper, Bettie Jean Holbrook, chaplain; Lana Settle. ● *Fourth Row:* Faye Wilmoth, Peggy Collins, Delores Stephens, Sarah Boyles, Janice Butner, secretary; Betty Gail Disher, Mary Lois Smith, Phyllis Maines, Lois Wagoner, Jackie Brown, Miss Elizabeth Kendall, adviser.

JUNIOR TRI-HI-Y CLUB

"Throughout the home, school and community."

First Row: Margaret Fletcher, Kay Beulin, Nancy Darnell, secretary; Dolores Wagoner, Alyce Braxton, Carole Brown, Abbye Davis, Vicky Franklin, Phyllis Brown, reporter; Wilma Chipman, Glenda Caudle. ● *Second Row:* Ann Hine, Watana Owens, treasurer; Barbara Sale, Helen Graham, Mary Ann Long, chaplain; Dorothy Lanning, Louise Laxton, Deanna Stuart, vice-president; Wilma Cheek, Pat Cass. ● *Third Row:* Betsy Ross Ashby, Betty Ann Parker, Jeane Smitherman, president; Marilyn Park, Mary Frances Hart, Clara Haynes, Minnie Lou Atkins, Pat Harris, Linda Walker, Linda Ford, Mrs. Claude Eldridge, adviser.



Future
Homemakers
of
America



4-H Club

FUTURE HOMEMAKERS OF AMERICA

"The homes of tomorrow."

First Row: Ann Hine, Wilma Chipman, Rita Caudle, Cora Alexander, Patsy Holcomb, Velda Blackburn, Edith Ray, Wilma Cheek, Norma Gentry, vice-president. ● *Second Row:* Clara Haynes, Kay Guyer, song leader; Edna Guyer, parliamentarian; Mabel Brinegar, program chairman; Thelma Luffman, Betsy Ball, secretary; Miss Mary E. Holland, advisor. ● *Third Row:* Peggie Harmon, Patsy Sofley, Emelene Corder, Lois Wagoner, treasurer; Lucy Ball, president; Dorothy Hodges.

4 - H CLUB

"To make the best better."

First Row: Farrell Settle, Ruthie Jackson, Patsy Jo Guyer, pianist; Nancy Martin, Jimmy Thompson. ● *Second Row:* Edith Hayes, Kay Guyer, vice-president; Henry Jackson, Barbara Cooper, Peggy Adams, reporter; Ruby Darnell. ● *Third Row:* Mr. Grady Fuller, adviser; Edna Guyer, secretary; Mabel Brinegar, treasurer; Lois Wagoner, Phyllis Maines, chaplain; Clara Bell Tucker, song leader; Mrs. Imogene Cochrane, adviser.

Band



Glee Club



BAND

"Root-a-toot-toot-."

Kneeling: Anne Durham, Sally Ray, Deanna Stuart, Watana Owens, Alice Cranford, Phyllis Lowe, Phyllis Allen, majorettes. ● *First Row:* Jim Darnell, drum major; Lee Harpe, Mike Carpenter, Albert Lee Rose, Johnny Eldridge, Wilbert McBride, Dwight Cass, color guards. ● *Second Row:* Robert Tatum, Lawrence Laxton, Richard Royall, Dolores Wagoner, Marilyn Park, Pat Mitchell, Billy Davis, Wally Holcomb, Billy Eidson, Tommy Osborne. ● *Third Row:* Jimmy Shore, Margaret Fletcher, Tony Adams, Felix Yarboro, Johnny Martin, Bob Noe, Helen Cranford, Gale Eidson, Jimmy Uldrick. ● *Fourth Row:* Mary Martin, president; H. L. Wooten, Caryl Guth, secretary-treasurer; Charles Edwards, vice-president; Wendell Guth, William Davis, Delores Stephens, Julia Leary, Judy Beale, Karen Bryant.

GLEE CLUB

"Do, mi, sol, do."

First Row: Patsy Lou Martin, Angelene Holbrook, June Pruitt, Mary Guyer, Edith Ray, Barbara Cooper, Joan Hudson, Georgia Jolley, Bettie Jean Holbrook, Edith Hayes, Ailene Couch, Wanda Tulbert, president; Norma Jean Gentry. ● *Second Row:* Mr. Ted Orr, director; Betty Felts, Martha Bruce, Shirley Helton, Joyce Cochrane, Maxine Settle, Betty Ruth Nixon, Faye Wilmoth, vice-president; Kay Guyer, Violet Durham, Helen Chatman, Emaline Hayes, pianist; Lois Brooks, chairman of recreation committee; Jacque Darnell. ● *Third Row:* Frances Byrd, Gaila Tucker, June Gentry, Lois Wagoner, Patsy Sofley, Mary Lois Smith, Phyllis Maines, Shirley Maines, Jackie Sloop, Frances Russell, Janet Walker. ● *Fourth Row:* Dickie Minish, Thomas Groce, Pat Seagraves, Betty Ellen Harris, Betty Ann Thomasson, Delores Stephens, Patsy Holcomb, Lucy Ball, Kathryn Osborne, Anne Durham, Pat Francis. ● *Fifth Row:* Roger Collins, Parks McBride, Rex Mastin, Jack Gentry, John D. Haynes, secretary-treasurer; David Rose, Clyde Hayes.



Debating
Club



Bi-Phy-Chem
Club

DEBATING CLUB

"Worthy opponents."

Standing: Polly Price, president. ● *Seated:* Karen Bryant, Dorothy Hodges, Nancy Cockerham, Emaline Hayes, vice-president; Ken Bryant, Jack Gentry, Glenda Lowe, secretary-treasurer and reporter; Lana Settle.

BI-PHY-CHEM CLUB

"F. E. A.—Future Einsteins of America."

First Row: Lana Settle, Karen Bryant, Annie Sue Jackson, Glenda Lowe, Doris Parks, Alyce Braxton, Vickie Franklin, Margaret Fletcher. ● *Second Row:* Jeane Smitherman, June Gentry, Lois Wagoner, Dorothy Hodges, Caryl Guth, Marquita Thomas, Emaline Hayes, secretary; Pat Francis, vice-president; Anice Lyon. ● *Third Row:* Felix Yarboro, treasurer; Dickie Minish, Wendell Guth, Allen Hall, Ken Bryant, president; Tommy Phillips, Gilbert Lowery, J. L. Lowe.



ATHLETICS





Monogram
Club

MONOGRAM CLUB

"E."

First Row: Mickey Wagoner, Wanda Tulbert, Shirley Helton, Bettie Jean Holbrook, Marilyn Park, Edith Hayes, Janet Burcham, Pat Windsor, Angelene Holbrook, Jackie Sloop, Dolores Wagoner, Phyllis Maines, Sarah Boyles, secretary; Polly Price. ● *Second Row:* John D. Haynes, Larry James, Carol Stuart, treasurer; Janet Walker, Frances Russell, Mary Lois Smith, Jane Boyles, Jackie Brown, Kitty Cranford, Caryl Guth, Mary Martin, Sylvia Martin, Emaline Vestal, Miss Polly Worrell, adviser. ● *Third Row:* Mr. Robert Yarborough, Mr. Claude Eldridge, advisers; J. L. Lowe, president; Gilbert Lowery, Felix Yarboro, Nicky Shore, vice-president; Bobby Graham, Jack Ferreira, Clyde Hayes, Murphy Osborne, Clifton DeBorde, Steve Hinshaw, Frank Chatman, Bobby Gentry. ● *Fourth Row:* Joe Journey, Bud Holcomb, Rex Mastin, Charles Edwards, Jim Darnell, Tommy Sprinkle, Fred Eidson, Buddy Vestal, Henry Walters.

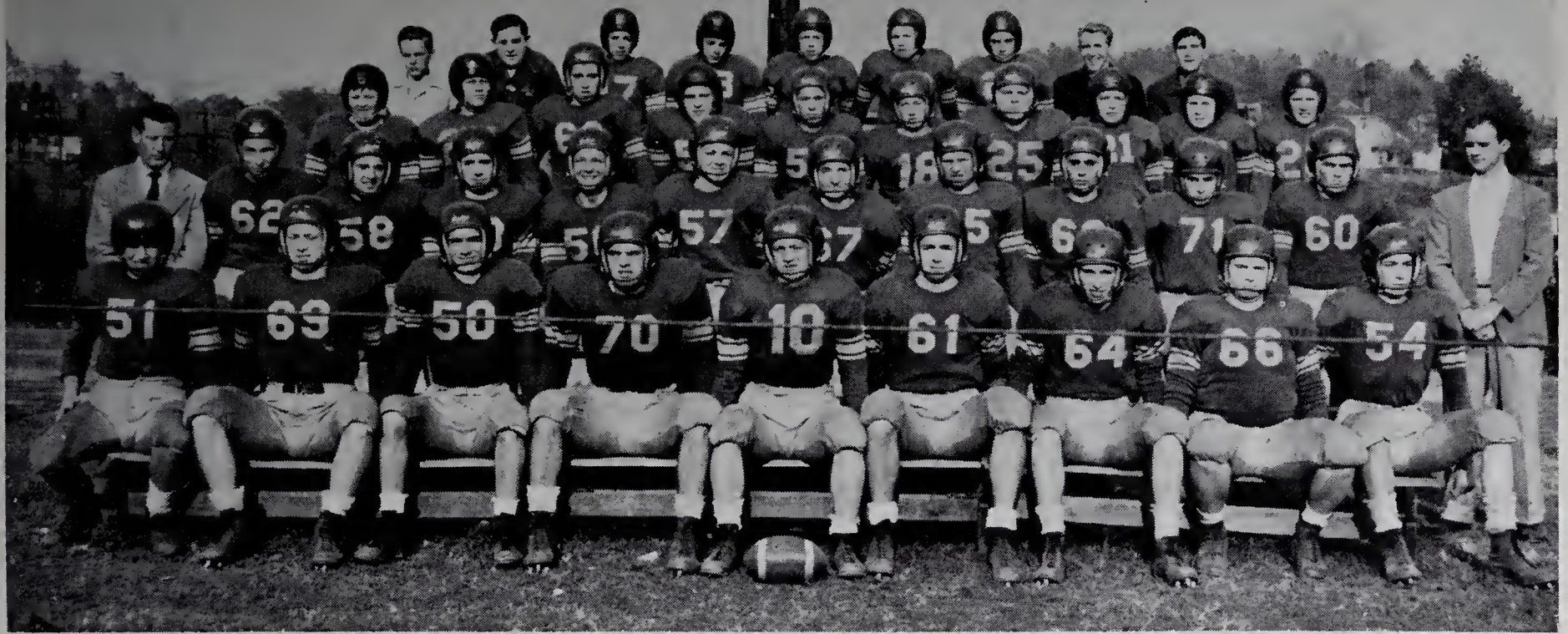
CHEERLEADERS

"Yea, team."

First Row: Melinda Helton, Velda Blackburn, Pat Windsor, Barbara Sale, Jane Boyles, Shirley Helton, chief; Lorene Tucker, Edith Ray, June Pruitt, Nancy Darnell, Wanda Tulbert. ● *Second Row:* Angelene Holbrook, Helen Graham, Jean Konkle, Emma Lee Holbrook, Vickie Franklin, Carole Brown, Rose Marie Smith, Ellen Poplin, Shelby Jean Couch, Thelma Luffman, Louise Laxton, Wilma Cheek. ● *Third Row:* Jackie Brown, Betty Childress, Phyllis Brown, Sylvia Martin, Josie Irvin, Minnie Lou Atkins, Abbye Davis, Linda Ford, Kay Beulin, Sandra Pennell, Bettie Jean Holbrook, Dorothy Lanning. ● *Fourth Row:* Clara Tucker, Phyllis Maines, Mary Lois Smith, Patsy Harris, Barbara K. Cooper, Janice Butner, Sarah Boyles, Kitty Cranford, Mary Frances Hart.

Cheerleaders





FOOTBALL

First Row: Charles Ashby, Rex Mastin, Jack Gentry, Buddy Vestal, Bob Darnell, Ken Bryant, Tommy Sprinkle, tri-captain; Larry James, Edward Blackburn. ● *Second Row:* Head coach Bob Yarborough, A. P. Alexander, J. L. Lowe, tri-captain, Murphy Osborne, John D. Haynes, tri-captain; Allen Hall, Jerry James, Junior Newman, Colvin Hege, John Davis, Nicky Shore, Assistant Coach Claude Eldridge. ● *Third Row:* Jimmy Bradley, DeVon Weatherman, Franklin Williams, Clyde Hayes, Harvey Settle, Phillip Royall, Miner Flynt, Melvin Thompson, Jack Ferreira, Ted Mastin. ● *Fourth Row:* Garvey Dameron, Clifton DeBorde, managers; Bobby Carter, Charles Walters, Eddie Carter, Jakie Mullis, Donald Koontz, Sammy Cockerham, Brent Johnson, managers.

Elkin Hi's 1952 Buckin' Elks had a dismal 1-7-1 record, but most of the players were inexperienced and hopes are high for future years. The Elks opened the season with a 13-13 tie in a hard-fought game at Granite Falls. The second game found the Elks facing Valdese, a powerhouse in the Northwest. The team fought gamely and held to a 7-7 tie in the second half as they bowed, 40-7. Another fine game can be credited to Elkin in the Mineral Springs game. The breaks handed the Elks a 18-7 defeat.

Boone handed the Elks a 31-7 licking as the entire team played shoddily. The one victory came in the homecoming game with Sparta. The Elks completed the festivities with a 31-0 win. In a sluggish game at Taylorsville, the team bowed again, 33-7. Probably

the best game of the season for the Elks was Hudson. In a see-saw battle, Hudson came out on top, 26-14. Following the trend of a good game-bad game, the Elks practically helped Boonville to a 31-0 victory.

In the traditional Jonesville game, the Buckin' Elks went all out and gave the undefeated Jays a real scare before bowing, 32-13. The Elks were out in front 13-7 at one time, but the vicious Blue Jay attack would not be denied.

John Haynes was voted the year's Most Valuable Player, and rightly so. John scored half the Elk's points, and was an outstanding defensive player. John D. Haynes, J. L. Lowe, and Tommy Sprinkle served as tri-captains.



"T. D.!"



"GOAL BOUND."



GIRL'S BASKETBALL

Karen Bryant, Frances Russell, Jackie Sloop, Pat Seagraves, Frances Byrd, Caryl Guth, Janice Butner, Jackie Brown, Barbara Cooper, Jean Smitherman, Janet Walker, Edith Hayes, Watana Owens.

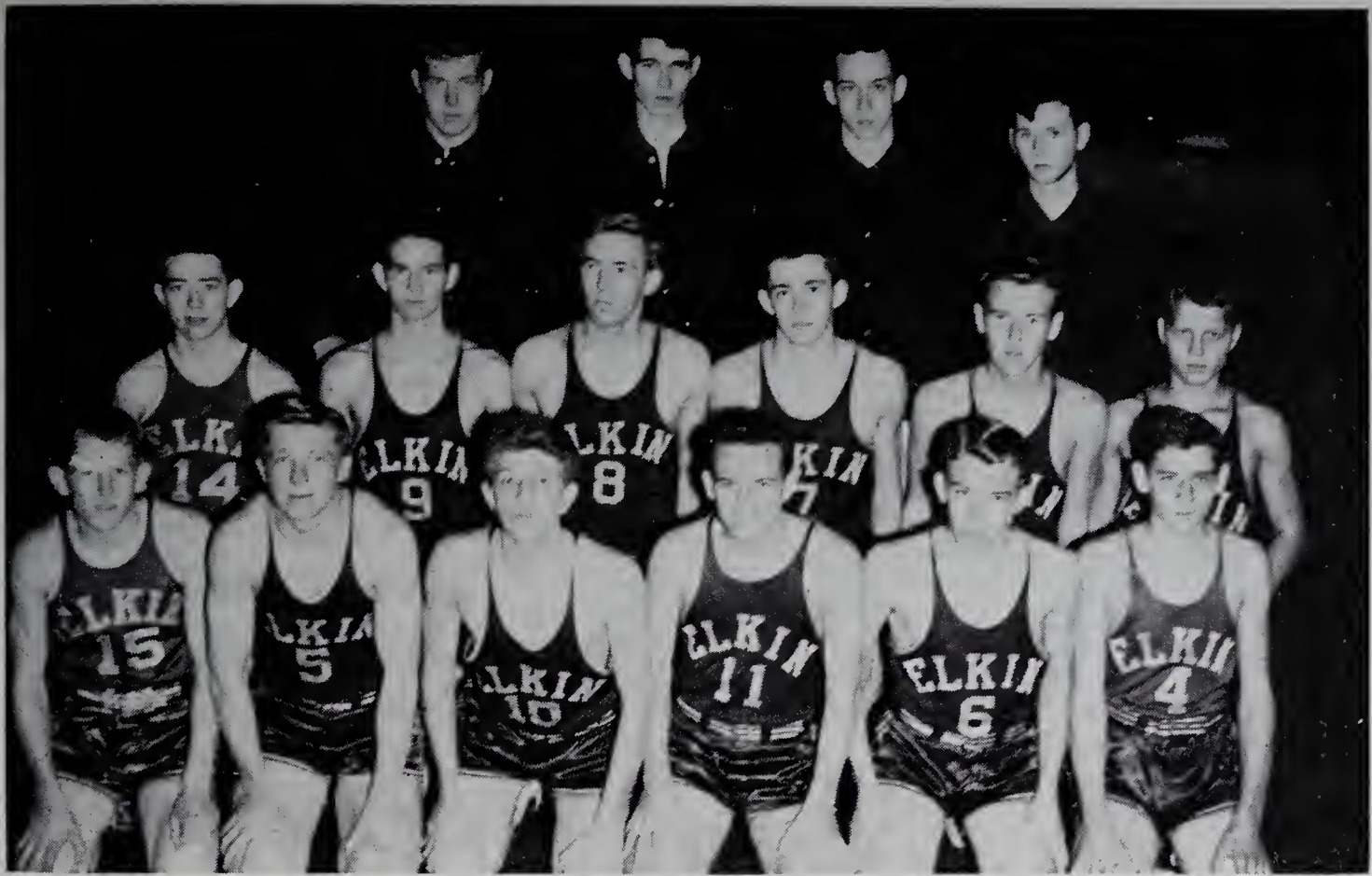
SCHEDULE

Dec. 12	Cove Creek	There	Jan. 30	Boone	Here
Dec. 16	Sparta	Here	Feb. 3	Copeland	Here
Dec. 19	Copeland	There	Feb. 6	Jonesville	YMCA
Jan. 6	Boonville	Here	Feb. 10	West Yadkin	Here
Jan. 9	Boone	There	Feb. 13	Cove Creek	Here
Jan. 13	Jonesville	YMCA	Feb. 17	Boonville	There
Jan. 16	Yadkinville	There	Feb. 20	Yadkinville	Here
Jan. 20	Open		Feb. 24	Taylorsville	There
Jan. 23	Taylorsville	Here	Feb. 27	Sparta	There
Jan. 27	West Yadkin	There			



"AW, GIRLS, LEGGO."

"AT LEAST, SHE TRIED."



BOY'S BASKETBALL

First Row: Charles Johnson, John D. Haynes, Charles Ashby, J. L. Lowe, Sammy Cockerham, Lyndon DeBorde. ● *Second Row:* Murphy Osborne, Jimmy Rogers, Joe Jurney, Ken Bryant, Fred Eidson, DeVon Weatherman. ● *Third Row:* Reece Osborne, Jimmy Darnell, Edward Blackburn, Bill Edwards.

SUMMARY

At the conclusion of the pre-Christmas schedule, Elkin High fans had a fairly accurate basketball preview. The Does had dropped three of their five games, but had shown possibilities of a highly successful season. Road games seemed to be the Worrell-coached sextet's main difficulty. In the Copeland game, the Does showed their potentialities as they rallied from a 31-20 third quarter score only to be edged out 36-33. With a little more consistency in their

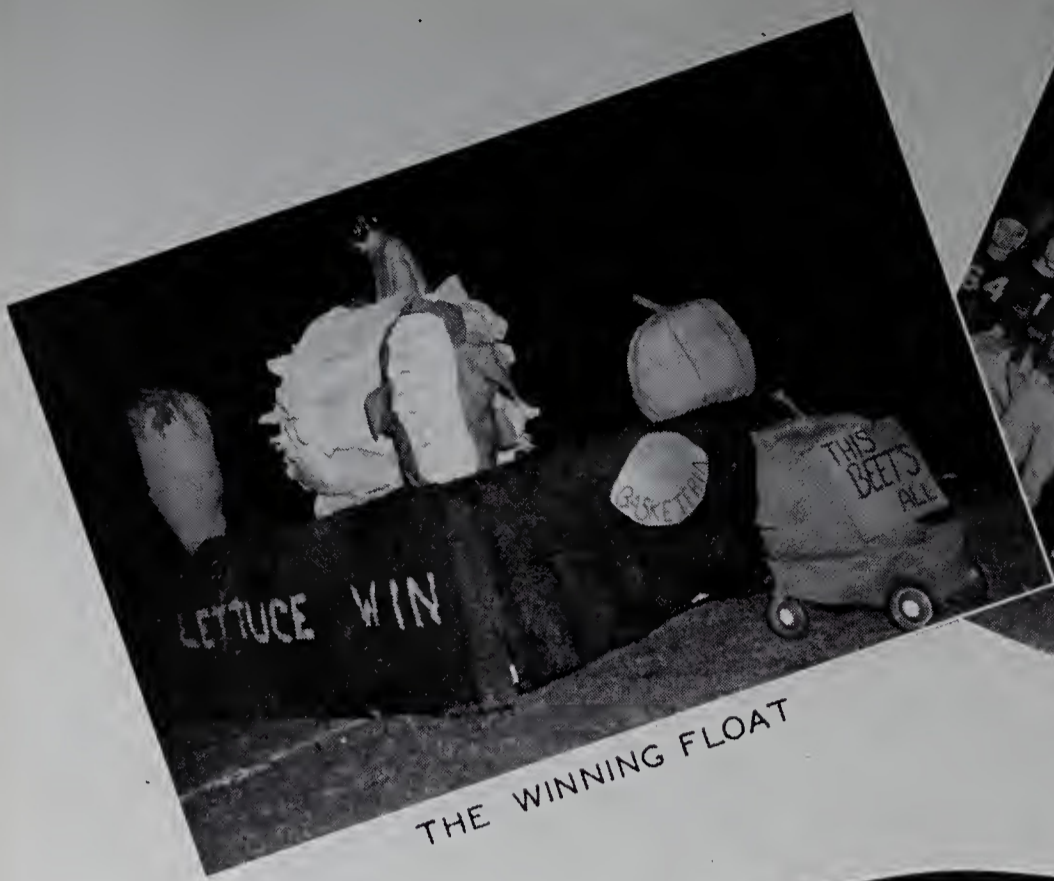
offensive attack the Does could develop into a real threat. Coach Claude Eldridge's Buckin' Elks held a 4-1 record, losing only to a superlative Cove Creek team. The Elks appeared headed for one of their most successful seasons in years. The team's average-per-game was 55. Frances Byrd and Jackie Brown had been the individual stars for the Does. Standouts for the Elks were Murphy Osborne, Ken Bryant, and J. L. Lowe.

'MAD SCRAMBLE'

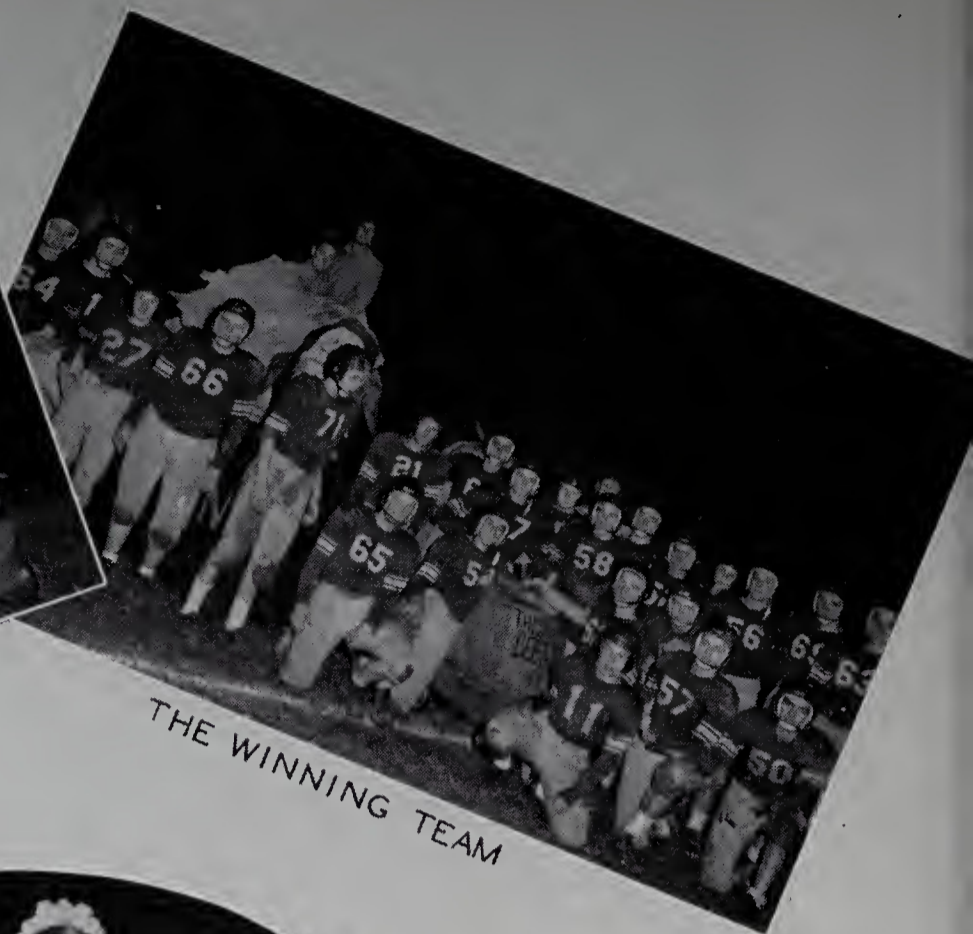


"PUL-LEESE GO IN."





THE WINNING FLOAT



THE WINNING TEAM

Home

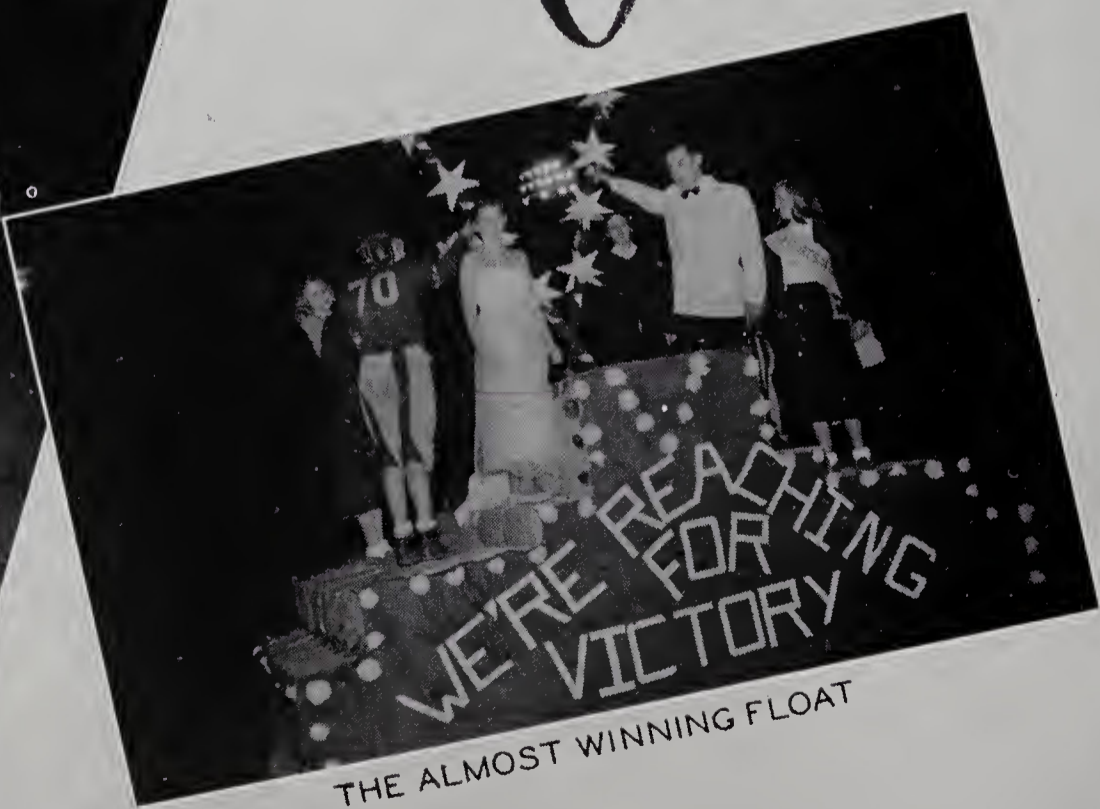


THE WINNING QUEEN

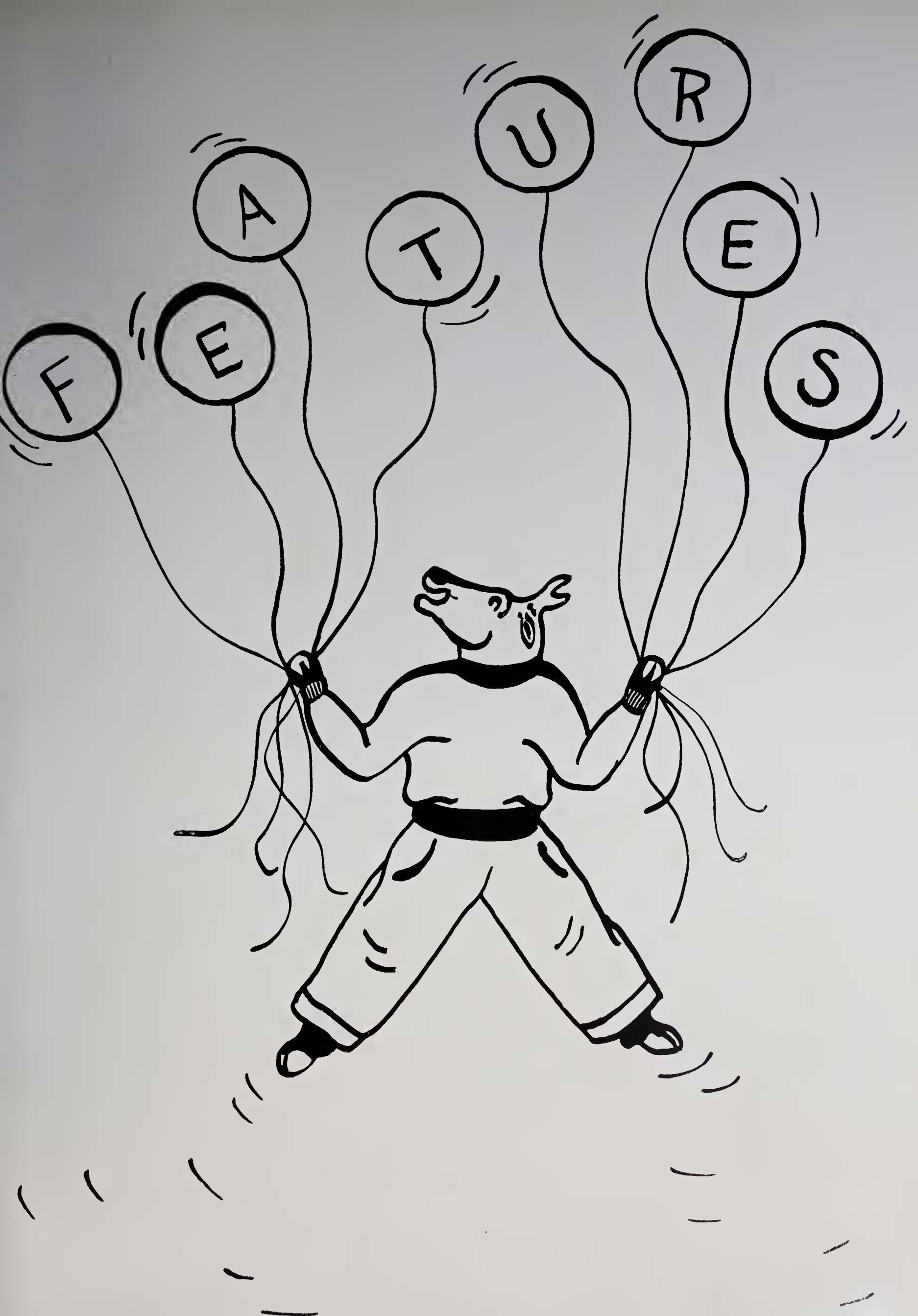
Coming



THE WINNING COACHES



THE ALMOST WINNING FLOAT





A DAY AT SCHOOL

1. "Aw, that excuse is no good."
2. "First, diagram the adjective clause."
3. "No, no, the dash goes here."

4. "Now report to your third period classes."
5. "If it just doesn't explode—."
6. "A stitch in time."



A DAY AT SCHOOL

1. "Boys, ya gotta have a project."
2. "Shucks, where's 'K'?"
3. The coefficient of 'W'—."

4. "But Charlemagne didn't agree."
5. "Books, books, and more books."
6. "All aboard and homework bound."



Compliments of

Harris Electric Company



Collins Pure Oil Service Station

Leo Collins, Proprietor

Wash Polishing Lubrication
Tires, Tubes, Batteries, Road Service

204 West Main

Elkin 480



Compliments of

Dun-Well Cleaners



Compliments of

**Reins-Sturdivant
Funeral Home**

North Wilkesboro, N. C.

R. E. Faw and Sons, Inc.

Since 1911

Serving in Northwest North Carolino

**Well-Pumps,
Plumbing Supplies**

The Greenleaf Nursery

Elkin, N. C.

Evergreens Boxwood Shrubbery

Trees, Shrubs

Doniel Creed, Proprietor

Phone 208-J

Butner Oldsmobile Co., Inc.

Sales and Service

Phone 495

1016 North Bridge Street

**Carolina Tennessee Coach
Co.**

Phone 462-J

Chorter buses anywhere in the
United Stotes

North Wilkesboro, N. C.

Compliments of
Johnny's Used Car Lot
"When better cars are to be sold
Johnny will sell them."
West Elkin, N. C.

Compliments of
Yadkin Valley Packers, Inc.
Dealers in
Meats Sausages Frozen Foods
Elkin, North Carolina

Compliments of
Stockin' and Boggin' Shop
"Hose for the ladies—
Clothes for the babies."
Mrs. Bettie Pardue Hinson

☆
The North Wilkesboro Coca-Cola Bottling Co.
☆

Compliments of
Pepsi-Cola Bottling Co.
Phone 590
Elkin-Jonesville, N. C.

Brown's Machine Co.
Electric and Acetylene Welding
◆
Phone 237

Chas. C. Poplin
Distributors for the Texas Company
Petroleum Products
Phone 425

Compliments of
**K. V. McLeod Motor
Company**
"Your Friendly Ford Dealer"
Elkin, N. C.



Compliments of

White Swan Laundry



Snow Motor Company

136 South Bridge Street

Phone 613

Sales—Buick—Service

Compliments of

Elkin Leather Company

"Everything in Leather"

Elkin, N. C.



Hensel Lumber Company

Elkin, North Carolina



K & B Service Station

Roger W. Sprinkle, Proprietor

Goodyear Tires Botteries

Sinclair Products

Phone 280

Elkin, N. C.

Compliments of

McDaniel's Department Store

Dry Goods, Notions, Ladies' Ready-to-Wear
Men's Clothing, Shoes

Phone 185

Elkin, North Carolina

Compliments of

Yadkin Finance Corp.

"Home Company for Home Folks"

Phone 605

Insurance—Real Estate

Hugh A. Royall



Phone 111

For the
smartest clothes in town
shop at

Harris and Wagoner
Men's Store

Elkin's Leading Clothiers
Elkin, North Carolina

Griffin Sporting Goods

Elkin, N. C.

MacGregor-Goldsmith
Athletic Equipment

Office and School Supplies

Compliments of

Surry Hardware Company

Quality and Service

Phone 38 Elkin, N. C.

Compliments of

Lucy Gray's Beauty Shoppe



Phone 380 Elkin, N. C.

Elkin Lumber & Manufacturing Co.



"Everything to Build Anything"



Phone 68 Elkin, N. C.

For Farming Equipment

See

**SURRY TRACTOR
COMPANY**



Elkin, North Carolina

Phone 645

Dearborn Farm Equipment

Ratledge Service Station



Oil and Gas that Saves You Costs
From Tank Car to Car Tank





Compliments of

BOONVILLE

Cleaners and Laundry



Whitener Lumber Company

Complete Line of Building Materials

Phone 1626-J

State Road, North Carolina

Rose and Day, Inc.

Pontiac Sales and Service

24-Hour Wrecker Service

Day Phone 345

Night Phone 10-F-22

Compliments of

Elk Pharmacy

Phone 310

Elkin, North Carolina

Always at Your Service

Compliments of

Super Tire Service

A. Dan Hudspeth, Owner

Phone 246

689 North Bridge Street

Elkin, North Carolina



Hall-Knott and Edwards

Quality Store for Young Men



Wolfe Brothers Furniture

Phone 3-F-23



State Road, North Carolina

Congratulations and Best Wishes

to the Class of 1953



Elkin-Jonesville

Building and Loan Association

Compliments of
Thomasson Florist



Flowers for All Occasions
Elkin, N. C. Phone 323

Compliments of
Kennedy Auto Supply



Elkin, N. C.

Compliments of
Dainty Lady Beauty Shoppe



Elkin, N. C. Phone 152

F. W. Chevrolet, Inc.

Elkin, N. C.

Sales and Super Service

Night Phone 775—Day Phone 255

Wrecker Service

Coke's Place

Phone 676

Pit Barbecue

Plates and Sandwiches—Soft Drinks

Mathis-Pardue Furniture Company

Jarvie Mathis Harvey W. Pardue

1131 Elk Spur Street

Elkin, N. C.

Watches—Diamonds—Jewelry



Carl W. Steele Jewelry Store



Elkin, N. C.

Save More Buy More From Elmore

Elmore's Grocery and Feed Store



Phone 203-R

Elkin, N. C.

Triangle Super Service

Cecil Crouse, Owner
J. & J. Oil Company Distributors
Wholesale
Fuel, Kerosene, Gasoline
Intersection of Highways 67 & 21
Phone 69 Jonesville, N. C.
"Our Name Is Our Motto."

Best Wishes to the Class of '53

Blue Front Cafe

1129 Elk Spur Street
Elkin, N. C.

W I F M

AM-1540 KC FM-100 MC
Member of Mutual
The World's Largest Radio Network
Phone 739
Elkin, N. C.

Compliments of

J. C. Penney Co.

108 E. Main St. Phone 138
Elkin, N. C.

Compliments of

J. M. Franklin

Architect and Engineer
Elkin, N. C.

Compliments of

MARTIN'S BAKE SHOP



Doughnuts Fried Pies
Box 83 Jonesville, N. C.



Phone 615

Compliments of

Fairmont Laundry & Cleaners

Phone 1624-J Elkin, N. C.
Satisfaction given; not promised

G & B Oil Company

E. C. Boyles

Wholesale and Retail

Phone 370

Compliments of

Rose's 5-10-25c Store

Clarice Oakley, Manager

No. 108

Elkin, N. C.

W. M. Wall, Jeweler



111 East Main Street

Phone 56

Compliments of

Hayes Cash Hardware Co., Inc.

Phone 112

Elkin, N. C.

Hardware & Paints

Electric Water Systems

Appliances & Supplies

Abernethy's Pharmacy

"A Good Drug Store"

Elkin, North Carolina

The Rexall Store

Compliments of

Grassy Creek Farm

Distributors of.

Sealtest Dairy Products

J. H. Beeson

Mutual Insurance Service

109 East Main Street

Phone 17

Compliments of

Gwyn Insurance Agency, Inc.

Service and Security

Phone 258

Elkin, N. C.

Compliments of

Lawrence Dry Cleaners



Phone 187

Elkin, N. C.

Lucky Break Pool Room



Sandwiches, Soft Drinks, Billards

Phone 155

Elkin, N. C.

Hinshaw Implement Company

John Deere Quality
Farm Equipment

Phone 36-J

Elkin, N. C.

T. A. Finley

Distributor

Gulf Oil Corporation

Phone 11

Elkin, N. C.

Moseley and Reece



Wholesale Grocers



Phone 19

Vestal Cash Grocery

Quality Western Meats
Frozen Foods Fresh Vegetables

We Deliver

929 N. Bridge St.

Elkin, N. C.

Phone 671

Biltmore Grill

Home Cooking

Just across the Bridge in Jonesville

We serve those who demand the best.

Blue Ridge Theatres

Movies provide the best in entertainment

Lyric Theatre

Reeves Theatre

Elkin, N. C.

Isenhour's Jewelry
Gifts That Last
Main Street
Elkin, N. C.

◆
Compliments of
Sinclair Refining Company
Elkin, North Carolina
◆

Turner Drug Company, Inc.
Elkin, N. C.
George E. Royall Edwin Royall
Henry Dillon
For the Best in Fountain Service and
Prescriptions

Kelley Paper Company
Mill Agents Distributors
Paper, Bags, Twine, etc.
Dial 3-1861
115 Brookstown Ave.
Winston-Salem, N. C.

Elmore's
Mutual Insurance Agency
◆
The Dividend Agency
111 Main Street Phone 738

Compliments of
KLONDIKE FARM
☆
Tops in Milk and Dairy Products
Fine Cows Produce Fine Milk
☆
Elkin, North Carolina

Compliments of
Blackwelder Furniture Company
The Home of Quality Furniture for
Less Money
Open Till 7:30 P.M.
Phone 549
Jonesville, North Carolina

Reddy Kilowatt
"Your Electrical Servant"



DUKE POWER CO.

Compliments of

**BRENDLE CASH
WHOLESALE, INC.**



J. D. Brendle



**CAROLINA BLOOMER
COMPANY**

Elkin, N. C.



Rayon and Nylon
Non-run Tricot Panties



THE BASKETERIA, INC.

Fresh Fruits and Vegetables

101 Main Street

Elkin, N. C.



**L. G. BALFOUR
COMPANY**

Service Quality Value Beauty

Class Rings and Pins, Commencement
Invitations, Club Insignia, Memorial
Plaques, Diplomas, Personal Cards

Represented by
Mr. John Beale, Jr.
P. O. Box 97
Johnson City, Tennessee

Compliments of

**H. C. BURCHAM AND
SON, INC.**



General Contractors

1120 Elk Spur Extension
Elkin, N. C. Phone 61-W

Compliments of

**CASH & CARRY
STORES,**

Incorporated



Wholesale and Retail

Elkin, N. C.



GRAHAM & CLICK

High Quality School Supplies



Elkin, N. C.

ELKIN FURNITURE COMPANY



Manufacturers of

Bedroom Furniture

Compliments of

THE BANK OF ELKIN

Elkin, N. C.



Member Federal Deposit Insurance Corporation

Phone 80

CHATHAM GRILL



Lower Floor Y. M. C. A.

Elkin, North Carolina

Compliments of

SPAINHOUR'S



A Modern Department Store

Elkin, North Carolina

Veteran Sheet Metal Shop

Warm Air Furnace

Guttering & Repairs

We Service What We Sell

Elkin, N. C. Phone 783-W

Congratulations to the Class of
1953

Staley's

Jackie Cheek, Manager

Roaring River, N. C.

Congratulations and Best Wishes
to the Class 1953

Star Lite Grill

Elkin, N. C. Phone 277-M

Martin's

Suburban Rulane Gas Service

Telephone 556-W

"Gas is cheaper—three times faster."

DONATIONS

Doug Darnell Foods
State Road Hardware
Auto Electric Parts Co.
Parks Shoe Center
Red Rose Cabs
Belk-Doughton
Dr. Claude McNeil
Dr. Olivia Abernethy
Dr. F. R. Fleming
Dr. W. B. Reeves
Ed Snyder
Rev. George Walters
Arnold Grocery
Don F. Gilliam
Von Byrd
Bryan's
C. M. (Red) Winfrey
Elkin Valley Grocery
Dr. R. M. Cooke
Mayflower Beauty Salon
Home Furniture Company
Fidelity Finance Company

Home Hotel
Pleasant Hill Grocery
Luffman Self-Service Grocery
Cockerham Barber Shop
West End Barber Shop
Eva Mickle Grocery
Dr. L. D. Pruett
Carolina Ice and Fuel
Joe Moore
Master Craft Shoe Shop
R. Lewis Alexander
Union Bus Terminal
Dr. Seth M. Beale
Charles M. Neaves
Tom Morrison
Allen and Henderson
Dr. Lin Fincannon
Western Auto Service
Dr. John W. Jolley
J. & P. Grocery
Roger's Shoe Shop
Dr. R. B. Harrell

Dr. J. A. Harrell
North Elkin Radio Service
Dr. E. C. Schiebel
Att. Parks Hampton
Mr. J. S. Atkinson
Dr. J. H. Howard
Poplar Springs Grocery
Mr. J. F. Miller
Miss Mollie Dobbins
Frank Haynes Used Cars
Dick's Radio Service
T. Harold Adams
Dr. H. L. Johnson
Jonesville Grocery
William Coleman
Lawrence's Curb Market
David R. Long
H. T. Bumgarner
Dr. J. M. Hall
Linoleum Shop
City Launderett

Chatham Blankets



Chatham Manufacturing Company

Elkin, North Carolina



Devoted to Elkin's Progress

Mike,
I really think
you are one of the
nicest and best mannered
boys I know. I really have
enjoyed having you as one of
my friends.
and ^{more} happiness always.
I wish you luck, happiness,
Sincerely,
Deanna
Marshall
0/10



LASSITER CORPORATION
CHARLOTTE, NORTH CAROLINA
School Publications

Best of luck always
Billy Edson

You pretty cool
Best, Mike
Richard Royall

Dearst Mike,
When you get married
and live in a shack,
Teach your children
to fight through the crack!

Best wishes,
Bill Edson

Mike I have
enjoyed being
in the 8th grade with
you. Best of luck always
My dear
Rose



