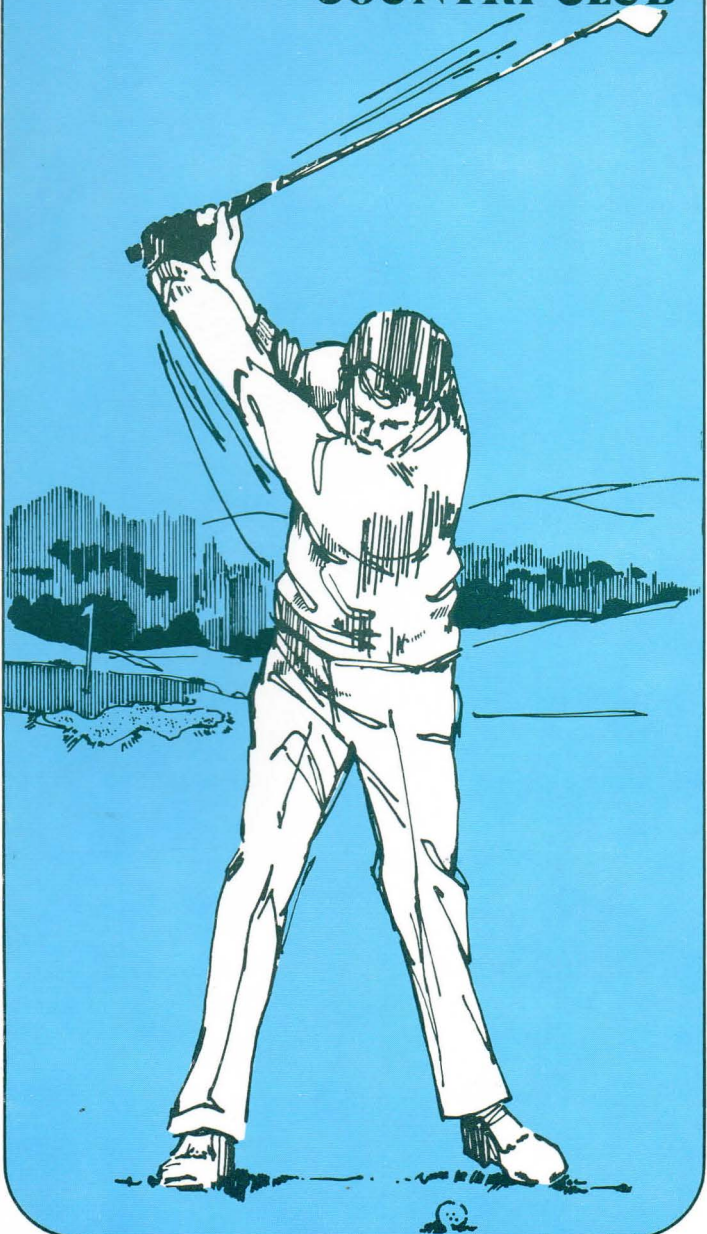


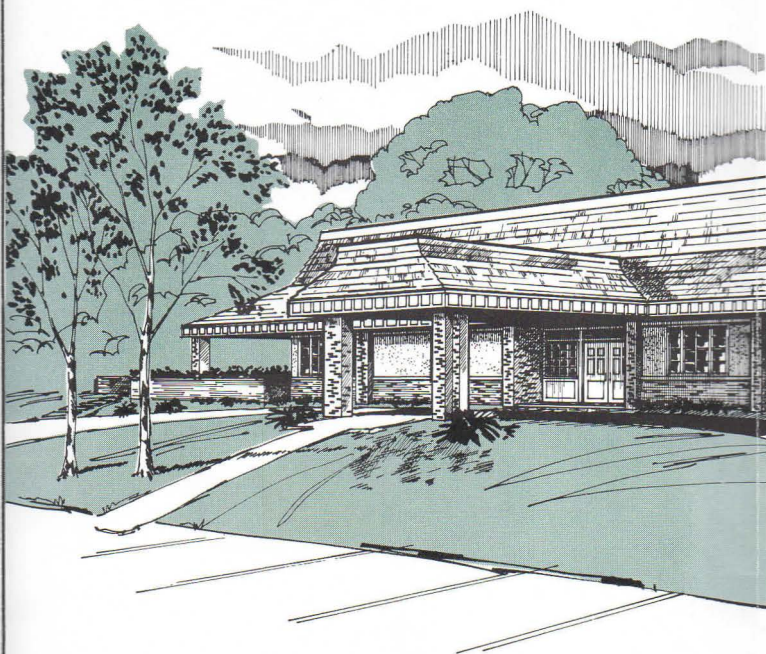
# CROSS CREEK COUNTRY CLUB





# CROSS CREEK CO

...A New Di

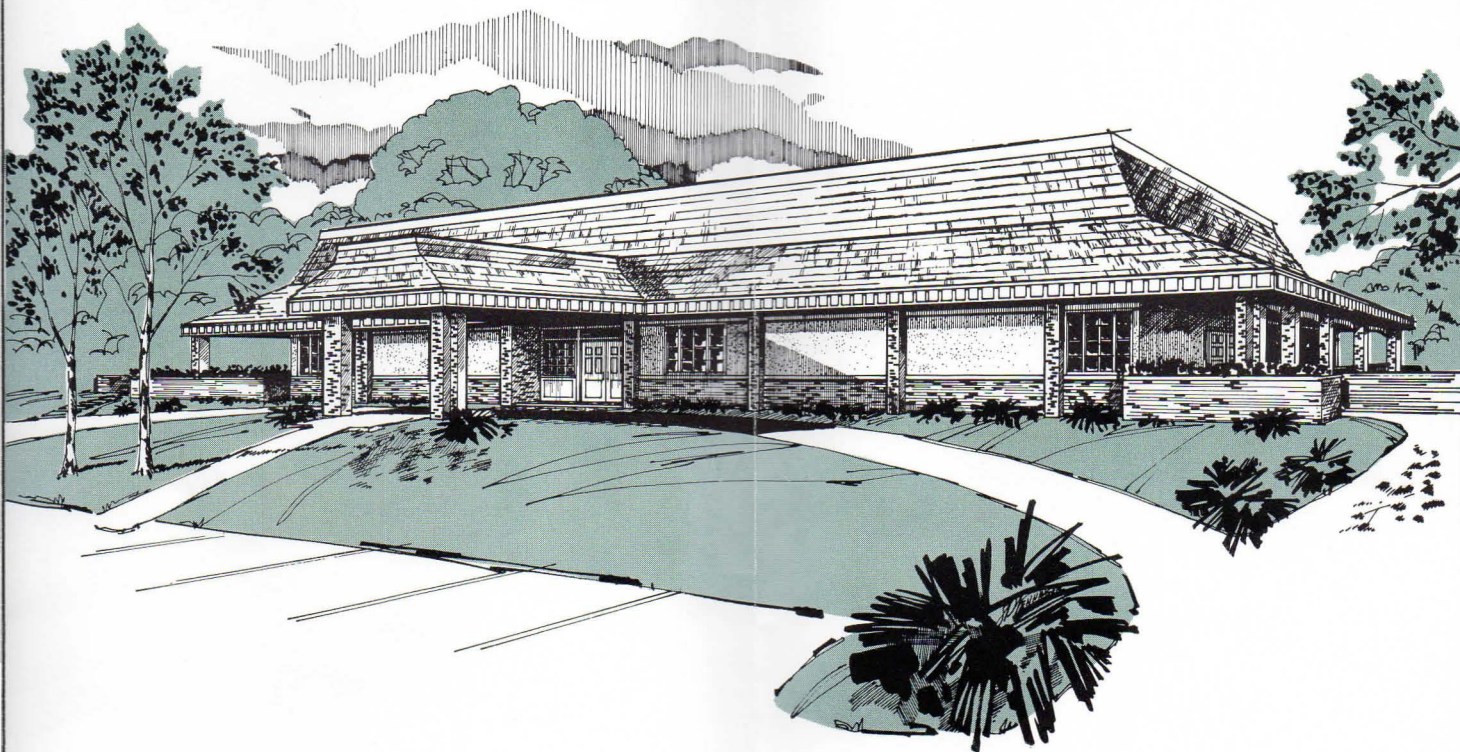


Nestled neatly in the foothills of the beautiful Blue Ridge Mountains, this truly superior Country Club is presently being developed. The club will feature a magnificent club house designed to occupy a commanding view of the golf course. The rolling hills which provide a foreground for the mountains beyond, can be seen from a terrace which sur-



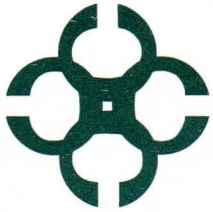
# CROSS CREEK COUNTRY CLUB

...A New Dimension of Excellence



Nestled neatly in the foothills of the beautiful Blue Ridge Mountains, this truly superior Country Club is presently being developed. The club will feature a magnificent club house designed to occupy a commanding view of the golf course. The rolling hills which provide a foreground for the mountains beyond, can be seen from a terrace which sur-

rounds three sides of the main building. Across from the landscaped parking area, tennis courts and a swimming complex are presently under construction and scheduled for completion during the early summer of 1974. Streets and water lines are being constructed to serve the residential area which overlooks the highlands portion of the course.



## CROSS CREEK COUNTRY CLUB

### ...A New Dimension of Excellence

The "Old South" atmosphere of the club house is particularly evident in the terrace view which can be seen from three sides of the building. This unique design makes both indoor and outdoor entertaining equally attractive.

In addition to the huge ballroom and dining room areas, the main floor provides a formal foyer, a warmly furnished lounge area, a private dining room, as well as the ultimate in locker room facilities for both ladies and gentlemen.

The ground floor houses the teen age room which provides a diversity of entertainment for the young people, such as ping pong, game tables, music and dancing areas. The pro shop, club storage, and cart areas are neatly contained in the remaining sections of the ground floor.

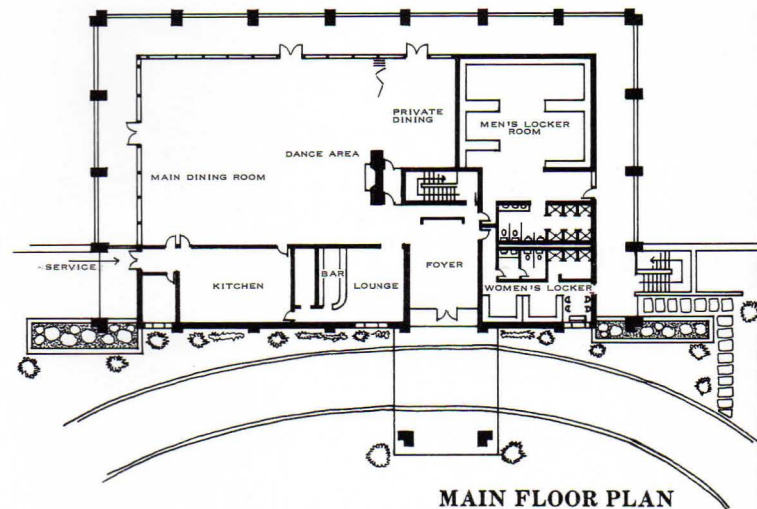
## TENNIS

Four "Laykold" tennis courts are under construction by Van Sumner, Inc., of Chesapeake, Virginia, a pioneer firm in the business of tennis court construction. The design of the courts is such that they may be used for any type of amateur or professional competition. The courts will be ready for play during the early summer of 1974.

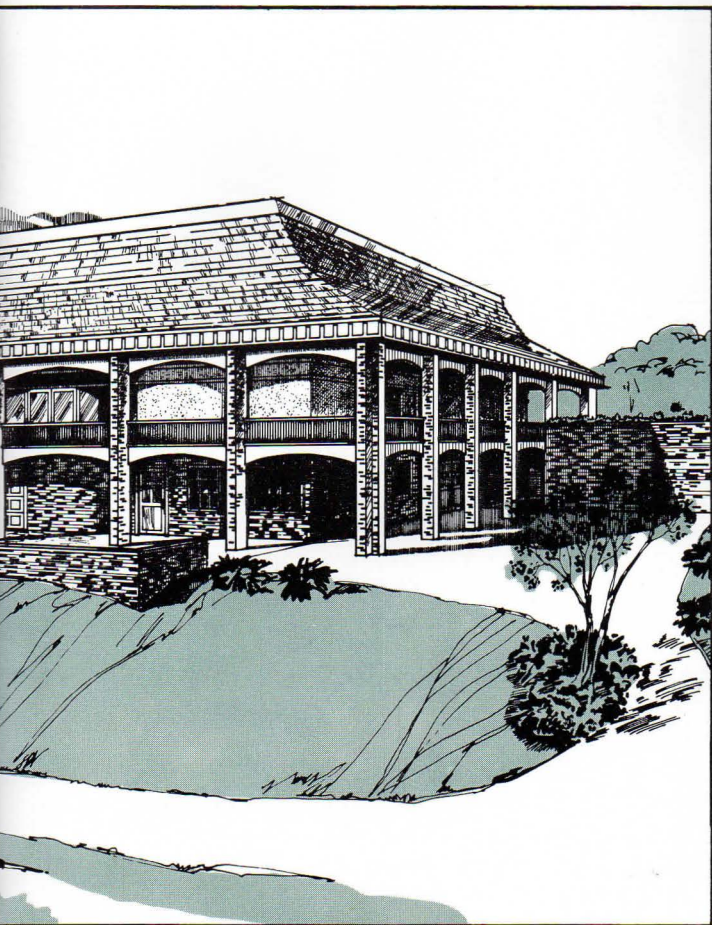
The bath house and related dressing room facilities have been designed to serve both the tennis and swimming pool areas. A covered area surrounded by a colonnade will provide shaded seating space for spectators and will feature food service from the main kitchen.



CROSS CREEK COUNTRY CLUB



MAIN FLOOR PLAN



## GOLF

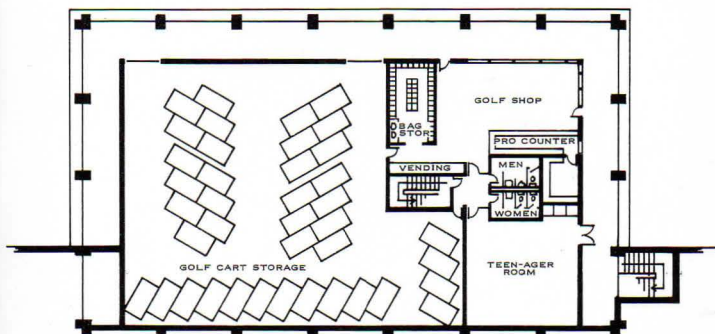
Completion of the 18 hole Cross Creek golf course is scheduled for Fall 1974. The course was designed and construction is being supervised by Joseph L. Lee who has designed and built such renowned courses as the 36 hole complex for Disneyworld in Florida and the Ben Hogan courses in Texas. Other famous courses designed by Mr. Lee include La Costa, San Diego, California, Lucayan Country Club and Shannon Country Club in Freeport, Grand Bahamas.

The Cross Creek course will feature a variety of interesting and picturesque water hazards and strategically placed bunkers which will be sculptured around the elevated greens. The design takes full advantage of the natural variations in terrain, as well as the scenic beauty of the surrounding area.

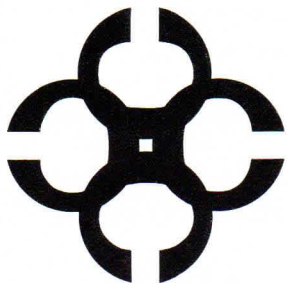
## SWIMMING

The swimming complex features a large pool designed in the shape of a "lazy Z." The main pool area measures 42 feet by 75 feet, one inch, which is in accordance with AAU specifications, thus enabling timed competition events. The pool's diving area is offset on one end of the swimming area and measures 32 feet by 20 feet. The wading area is offset on the other end and measures 20 feet by 20 feet. Adjacent to the main pool is a kiddie pool which measures 10 feet by 20 feet and is completely enclosed by a four foot high safety fence. The area surrounding the pool will cover 8,740 square feet and will be covered with Keystone Kool Deck, a finish applied to concrete which reduces surface heat.

The bath house and related dressing room facilities have been designed to serve both the tennis and swimming pool areas. A covered area surrounded by a colonnade will provide shaded seating space for spectators and will feature food service from the main kitchen.



LOWER FLOOR PLAN



# CROSS CREEK COUNTRY CLUB

## ...A New Dimension of Excellence

The developers of Cross Creek are providing a truly superior recreational and leisure facility combined with a residential area of unsurpassed natural beauty. A variety of condominium and home sites overlook the golf course, rolling hills, laurel thickets, scenic wooded areas, and the majestic mountains which make up the landscape of the surrounding area. The wonders of nature express themselves in a unique way at Cross Creek. Cross Creek is designed to be a new dimension of excellence and brings to Northwest North Carolina a special quality of residential and recreational life which could heretofore be enjoyed only through extensive travel.

For further information on  
**CROSS CREEK COUNTRY CLUB**  
call Area Code 919, 786-5514  
or write to:  
**CROSS CREEK COUNTRY CLUB**  
P. O. BOX 429  
MOUNT AIRY, NORTH CAROLINA 27030





**CROSS CREEK COUNTRY CLUB  
OFFICERS**

Chairman of Board  
and Director.....Howard O. Woltz, Jr.  
President  
and Director.....C. Richard Vaughn  
Vice President  
and Director....C. Edward Crossingham  
Secretary/Treasurer  
and Director....H. Lindsay Holcomb, Jr.

**Principal Occupation**

Chairman of  
Board.....Exposaic Industries, Inc.  
President....John S. Clark Construction Co.  
President.....Spencers, Inc.  
President.....Pine State Knitwear Co.

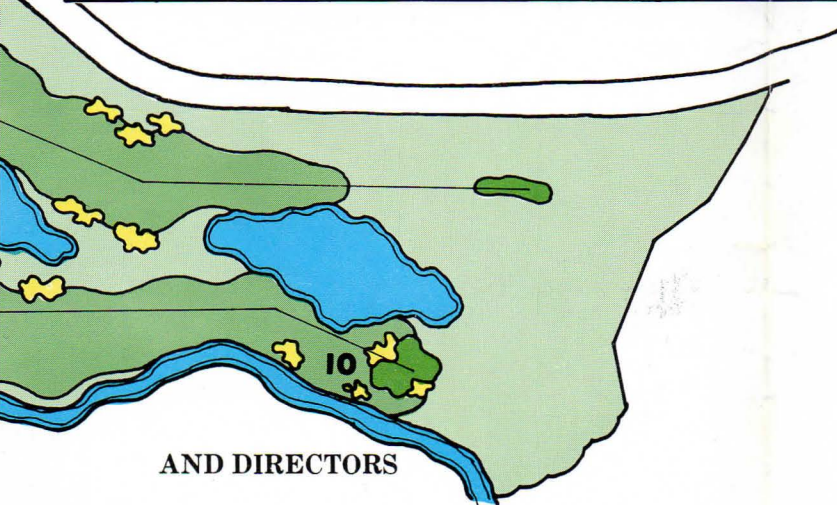
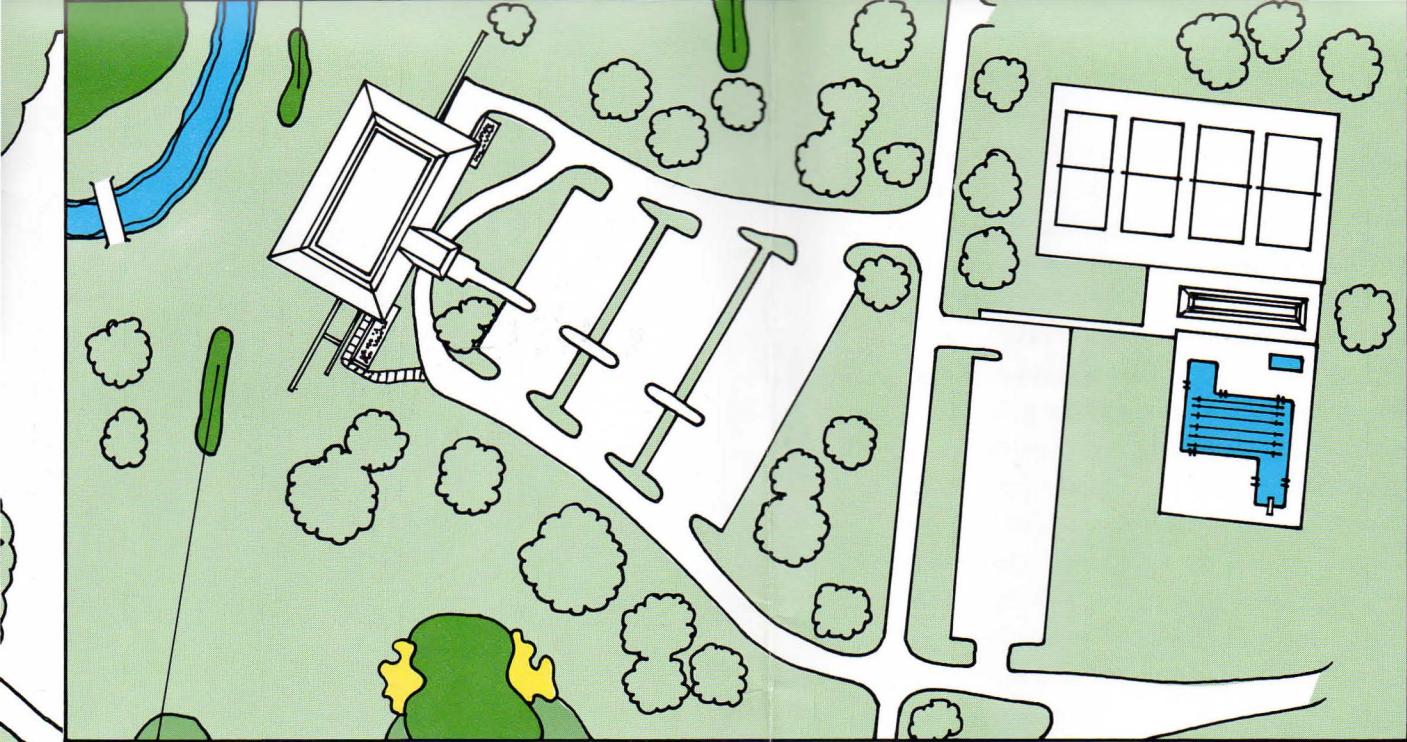


**Cross Creek residents can enjoy a variety of wholesome outdoor recreational activities in an environment of unsurpassed natural beauty.**

**The club house complex provides the opportunity for gracious entertaining in a warm, friendly atmosphere.**

**The initial development plans cover an area of 275 acres with an additional 250 acres available for future expansion.**





**AND DIRECTORS**

Director ..... Zack W. Blackmon  
 Director ..... W. Frank Comer  
 Director ..... Kilbourne A. Henry  
 Director ..... A. Smith Holcomb  
 Director ..... Donald V. Porter  
 Director ..... H. O. Woltz, Sr.  
 Director ..... John E. Woltz

**Principal Occupation**

Vice President ..... Floyd S. Pike Electrical  
 Contractors  
 Exec. V. President ..... Northwestern Bank,  
 Dobson, N. C.  
 Director/Employee  
 Relations ..... Perry Manufacturing Co.  
 Vice President ..... Pine State Knitwear Co.  
 Chief Executive .... Starrett Granite Surface  
 Plate Division  
 Senior Partner .... Woltz, Lewis and LaPrade  
 President ..... Quality Mills, Inc.

## **CROSS CREEK COUNTRY CLUB**

**The developers of Cross Creek are providing a truly superior recreational and leisure facility combined with a residential area of unsurpassed natural beauty. A variety of condominium and home sites overlook the golf course, rolling hills, laurel thickets, scenic wooded areas, and the majestic mountains which make up the landscape of the surrounding area. The wonders of nature express themselves in a unique way at Cross Creek. Cross Creek is designed to be a new dimension of excellence and brings to Northwest North Carolina a special quality of residential and recreational life which could heretofore be enjoyed only through extensive travel.**



**For further information on  
CROSS CREEK COUNTRY CLUB  
call Area Code 919, 786-5514**

**or write to:**

**CROSS CREEK COUNTRY CLUB  
P. O. BOX 429**

**MOUNT AIRY, NORTH CAROLINA 27030**