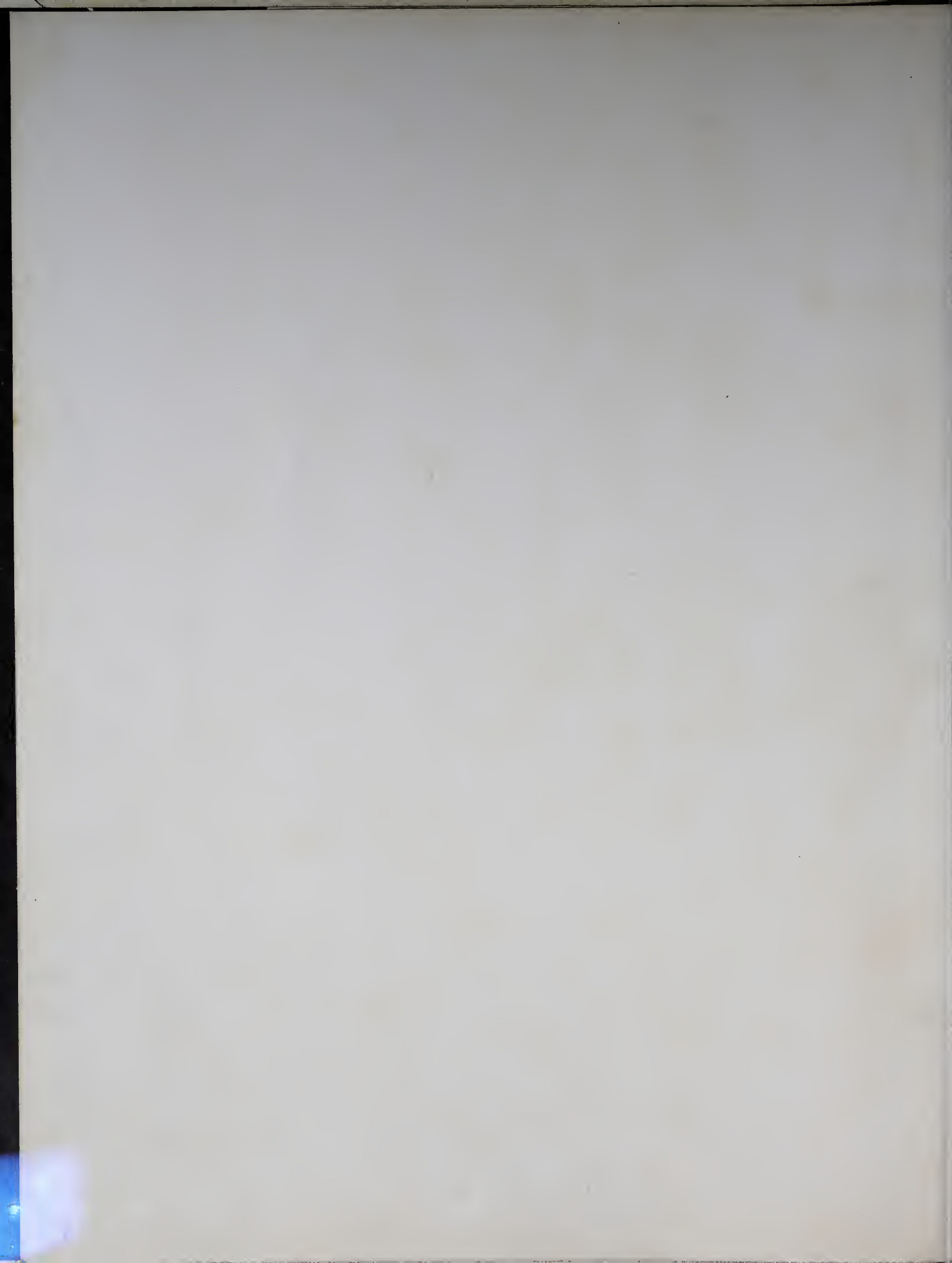






Charles Gerald
Carpenter





Presented by the Annual Staff

of

Elkin High School

Elkin, North Carolina

1961

JANE CRANFORD.....*Editor-in-Chief*

JO ANN FOSTER.....*Assistant Editor*

MR. ROBERT CRISSMAN.....*Sponsor*

t
h
e

e
l
k



f O R E W O R D

The Elk of 1961 presents a photographic record of this year's activities and personalities, disappointments and highlights. We sincerely hope that our yearbook will renew for you the spirit and ideals of the past year and that through it you will be able to look back with pride and satisfaction upon 1961 at Elkin High School. To you, the students, faculty, alumni, and friends of Elkin High, we, the Class of 1961, present our Sixty-one Elk.



Best Wishes,
I have really enjoyed
teaching and working with
you (not to mention
w:idge).
Paul D. Atwell



MR. PAUL D. ATWELL



To one whose cries of "Silence!" terrify us all, whose colloquialisms murder the "King's English", and whose fierce countenance is enough to make anyone snicker, we dedicate our '61 Elk. To one who has taught us within and beyond the classroom, who has given willingly of his time and talent to make our years at Elkin High School profitable, and who, by his ability as teacher, singer, and counselor, has impressed us all, we, the Senior Class of 1961, dedicate the '61 Elk to Mr. Paul D. Atwell.

dedication

a
d
m
i
n
i
s
t
r
a
t
i
o
n



Seated: Mr. Richard Atkinson, Dr. V. W. Taylor. *Standing:* Mr. N. H. Carpenter, Mr. John Haynes, Mr. Joe Bivins, Mr. Wade Hampton.



MR. N. H. CARPENTER
Superintendent



MR. FRED W. ROGERS
Principal



MR. DALE ALDRIDGE

B.S. in Industrial Arts
East Carolina College

MR. PAUL ATWELL

A.B. in English, History
High Point College



MRS. MARY BIVINS

A.B. in Mathematics
Woman's College of the University of North Carolina

MISS EMMA COOKE

A.B. and M.A. in English, Latin, Mathematics
Appalachian State Teachers College

*Jerry,
Spero te futurum esse felicem
et laetum! affectionately,
Emma Cooke*



MR. ROBERT CRISSMAN

B.S. in English, Physical Education
Appalachian State Teachers College

MR. CLAUDE ELDRIDGE

B.S. in Diversified Occupations, Mathematics
Appalachian State Teachers College



MRS. CLAUDE ELDRIDGE

A.B. in Psychology, Bible
Queens College

MR. BLOIS GRISSOM

B.S. in Physical Education, Social Studies
M.A. in Education
Appalachian State Teachers College



MRS. LAKE HAYNES

B.S. in English, Social Studies
Radford State Teachers College

MR. TOMMY HOLCOMB

B.S. in Business Education
Appalachian State Teachers College

f
a
c
u
l
t
y

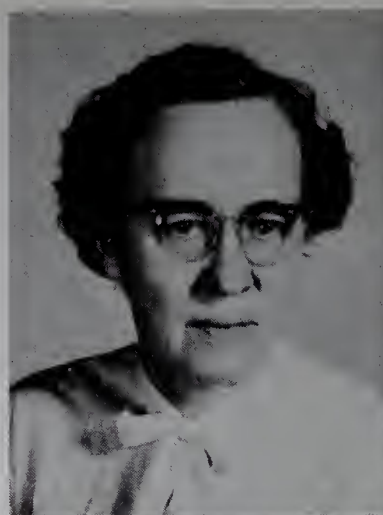
f
a
c
u
l
t
y

MISS MARY HOLLAND

A.B. in Home Economics
Columbia College

MR. BERT JOINES

B.S. and M.A. in Science
Appalachian State Teachers College



MRS. ELEANOR KILBY

B.S. in Physical Education
Mars Hill College, Wake Forest College

MR. CHARLES MADISON

B.S. in Science
East Carolina College



MRS. ADRIAN NIXON

B.S. in Distributive Education, Commercial
Woman's College of the University of North Carolina

MRS. MAE PARDUE

B.S. in English
Appalachian State Teachers College



MR. CLYDE PARKER

A.B. in Bible, History, Education, M.E. in Education
Marion College, The University of North Carolina

MR. ROY RUSSELL

B.A. in Music
Wingate College, Wake Forest College



MISS ANN SEBASTIAN

B.S. in Library Science, Grammar Grade Education
Appalachian State Teachers College

MR. ROBERT WALKER

B.S. in Science
Appalachian State Teachers College



SENIORS	10-31
Officers	10
Mascots	11
Statistics	25-27
Superlatives	28-31
JUNIORS	32-35
Officers	32
Marshals	35
SOPHOMORES	36-38
Officers	36
FRESHMEN	39-40
Officers	39
EIGHTH GRADE	41-42
Officers	41

CLASSES



WALTER METZ
President



HARRY JENNINGS
Vice-President

SENIOR OFFICERS

BARRY LANKFORD
Secretary



JANE CRANFORD
Treasurer





JOHN HOWARD FORD
WIFM . . . "tall, cool one" . . . Connie.



MARGARET EUNICE GREGORY
"Mickey" . . . jolly . . . "Yea, Duke!"



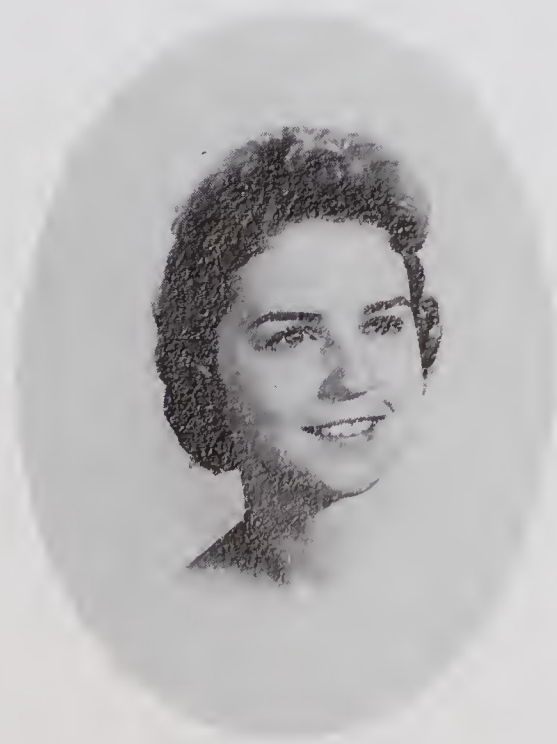
JO ANN FOSTER
"twinkle-toes" . . . dark brown eyes . . .
just a little bit crazy!



CAROLYN ELIZABETH HAMPTON
Barry . . . personality plus . . . "61(?)
. . . why, we're wonderful!"



STEPHEN MONROE FREEMAN
N. C. State . . . integrity . . . man of
few words.



ALMA ELDRIDGE HARMON
Belk's . . . cute . . . quiet.

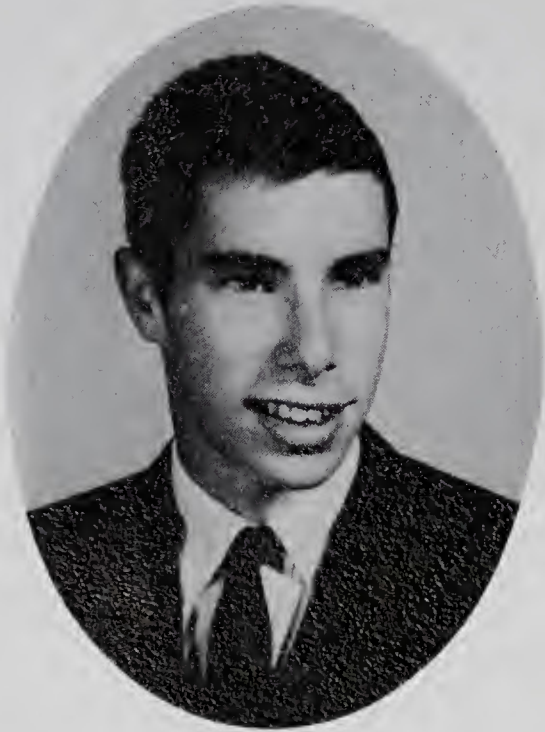
.
. .
. .
. .
. .
S
E
N
I
O
R
S
. .
. .
. .
. .
. .
. .
. .
. .
. .
. .



JUDITH GLENN HARRIS
"Judy" . . . H₂O₂ blonde . . . best sport.



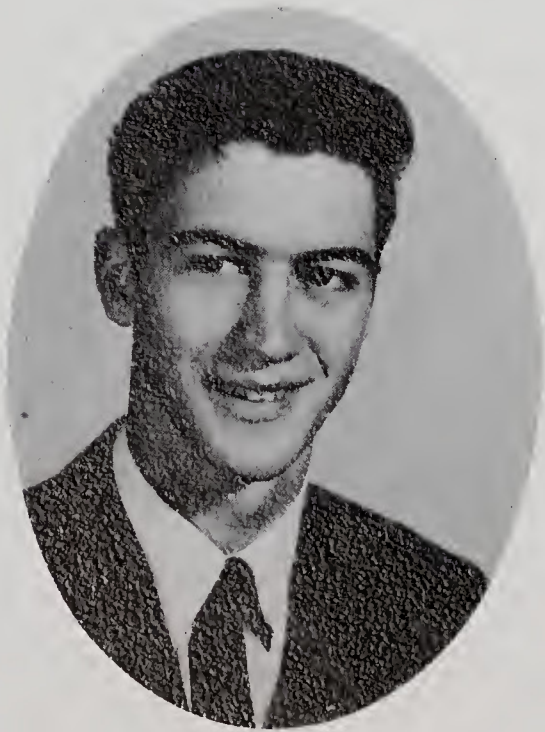
VIVIAN ANNETTE HAYES
flirt . . . "Chief Pee-Wee" . . .
yackety-yak!



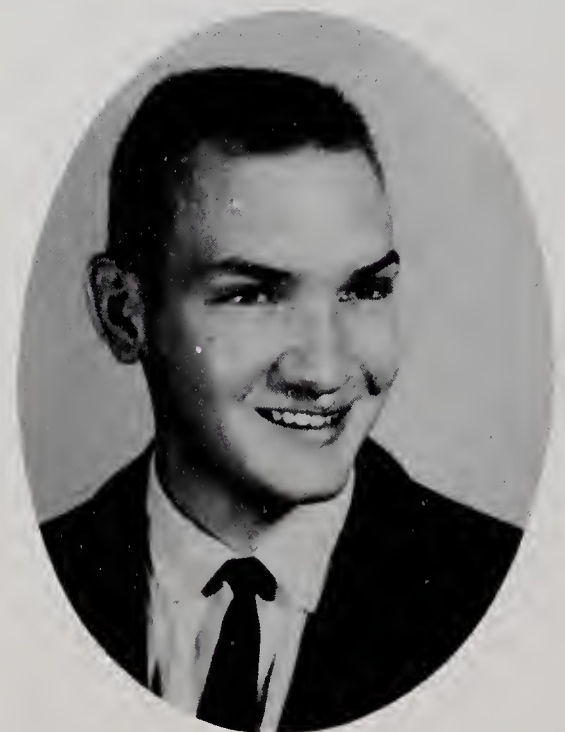
REGINALD LEE HARRIS, III
"Reggie" . . . golf . . . "wolf" . . . cute.



ESKER RAY HINSON
"Lover" . . . (horses, girls, cars) . . . M.P.



SETH D. HARRIS
tall, dark, and handsome . . . easy going
. . . likeable.



JERRELL PENN HOLLOWAY
Oh, so serious! . . . the executive type
. . . great guy.

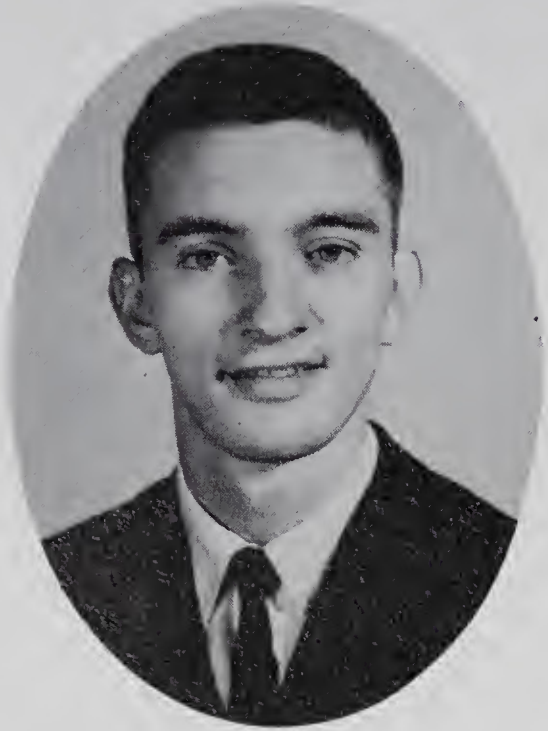
.
. .
. .
. .
. .
. .
S
E
N
I
O
R
S
. .
. .
. .
. .
. .
. .



VIVIAN ETTA JOHNSTON
Jimmy . . . "freckles" . . . sweet
disposition.



THOMAS BARRETT LANKFORD
"Bear" . . . the old philosopher . . .
Hilda Gay.

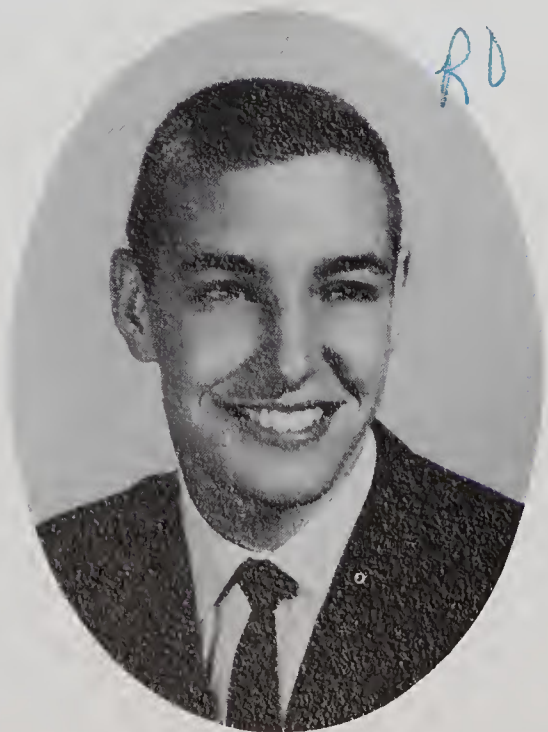


LARRY DALE JORDAN
'Nita . . . tall . . . "speedo".



RONALD DAVIS LONG
Clara . . . "Ronnie" . . . Fireball.

.
. .
. .
. .
. .
. .
. .
. .
S
E
N
I
O
R
S
. .
. .
. .
. .
. .
. .
. .
. .



R. O. LANIER, JR.
"Honey" . . . dream voice . . . laughs
too much . . . legs.



PATRICIA ANN LYON
"Pat" . . . "Attention, please." . . .
cold natured.



MARTHA ANN PARDUE
good little forward . . . "4" . . . J'ville.



WILLIAM BERT PHILLIPS
"Billy" . . . loud mufflers . . . run-around.



GABRIELLE PARK
sincere . . . engaged . . . sweet.



EDGAR HERBERT ROYALL
"Mr. Wit" . . . Cain VI . . . that laugh!



SUE ANN PENNELL
"Susie" . . . car trouble . . . friendly.



ANN VERNON SAGAR
"Carrot" . . . devilish . . . "Why, I didn't say a word!"

.
. .
. .
. .
. .
S
E
N
I
O
R
S
. .
. .
. .
. .
. .



GARY DALE SALLEY
soft voice . . . hot rod Chevrolet . . . shy.



BONNIE LOU SHORE
Tony . . . good friend . . . petite.



LINDA SUE SCOTT
"Scottie" . . . great gal to know . . .
infectious laughter.



BETTY ANN SLOOP
loves shorthand . . . beautiful eyes . . .
a laugh a minute.



ANITA GAIL SHORE
Dale . . . quiet (on the surface) . . .
"sweet as apple pie".



KATIE SUE SPANN
hospital . . . the silent type . . . true blue.

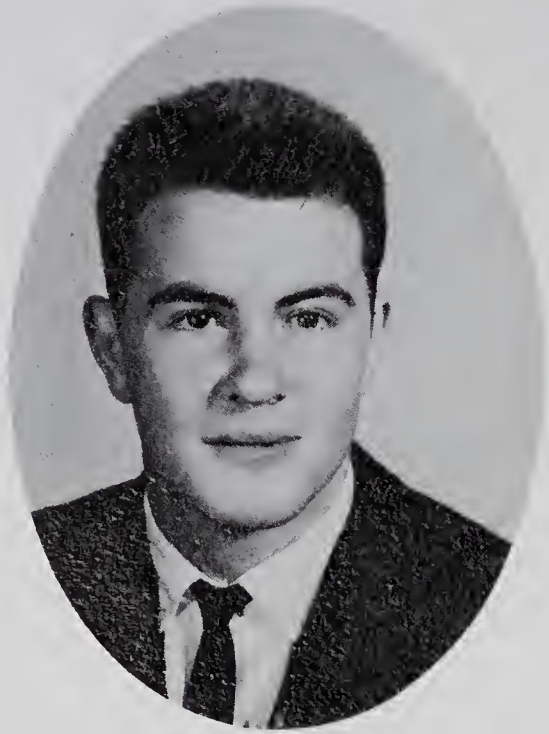
.
. .
. .
. .
. .
S
E
N
I
O
R
S
. .
. .
. .
. .
. .
. .



WILLIE MAE WELBORN
Henry . . . sweet and cute . . .
fun-loving.



WAYNE COY WILMOTH
good time . . . admirable qualities . . .
quiet type.



O. W. WHITE, JR.
"Handsome is, as handsome does" . . .
Edgar's buddy.



IDA ELIZABETH WINDSOR
"Betty" . . . true blue . . . capable.



PATRICIA ANN WHITE
spoken for . . . "Patsy" . . . sweet and
sincere.



NANCY CAROLE WRIGHT
music, music . . . female genius . . .
original.

.
. .
. .
. .
. .
. .
S
e
n
i
o
r
s
. .
. .
. .
. .
. .
. .
. .
. .

SENIOR STATISTICS

MOLLY BARKER

Tri-Hi-Y 1, 2; Monogram Club 2; Garden Club 3, 4; Yearbook 3; Music Club 3, 4; Cheerleader 1; Caperettes 2, 3, 4; Interclub Council 4; Homecoming Attendant 2; Homecoming Queen 4; Intramurals 1, 2; Senior Superlative.

TOMMIE JACQUELINE BATES

F.H.A. Club 1, 3; D. E. Club 4; Glee Club 3, 4; Office Assistant 3, 4; Intramurals 1, 2.

JOSEPH POWELL BIVINS

Beta Club 3, 4; Industrial Arts Club 1; Science Club 1, 2; Intramurals 1, 2.

JERRY RAY BLACKBURN

Industrial Arts Club 1; Boy Scouts 1, 2, 3; Science Club 1, 2; Intramurals 1, 2, 3; Senior Superlatives.

RITA ANN BRINEGAR

Beta Club 3, 4; F.H.A. Club 1; D. E. Club 4, Secretary; Monogram Club 3; Glee Club 3; Girls Athletic Association 3; J. V. Basketball 1; Softball 2; Intramurals 1, 2, 3; Honor English 3.

EDWARD MAURICE BUMGARNER, JR.

Industrial Arts Club 1; Science Club 1; Monogram Club 3; Band 1, 2, 3, 4; Track 2; Intramurals 1, 2, 3, 4.

SYBIL JEAN BYRD

North Wilkes High School 1, 2, 3; D. O. Club 4; Homecoming Attendant 4.

ALICE CALHOUN

Latin Club 1; Tri-Hi-Y 1, 2, 3, 4, Publicity Chairman 1; Garden Club 3, 4; Music Club 4; J. V. Basketball 1; Homecoming Attendant 4; Intramurals 1, 3; Honor English 3, 4.

LINDA REBECCA CARLTON

Science Club 1; D. E. Club 3, 4; Office Assistant 4; Library Assistant 1, 2; Intramurals 1, 2.

MICHAEL DAVID CARROLL

Science Club 1, 2; Boy Scouts 1, 2, 3; J. V. Football 1; J. V. Basketball 2, 3; Basketball 4; Tennis 1, 2, 3; Intramurals 1, 2, 3, 4.

GEORGE CARSON, II

Latin Club 1; Beta Club 3, 4; Science Club 1, Secretary; Boy Scouts 1, 2, 3, 4; Monogram Club 2, 3, 4; Music Club 4; Debating Team 2, 3, 4, Conference 3; *The Elk Staff* 4, Business Manager; *The Elk Antler Staff* 4, Business Manager; Student Council 3; Interclub Council 4; Tennis 1, 2, 3, 4; National Merit Scholarship Semifinalist 4; Marshal 3; Intramurals 1, 2; Honor English 3, 4.

HILDA GAY CARTER

Tri-Hi-Y 2, 3, 4, Vice-President 4, Council of Carolinas 4; F.H.A. Club 2, 3, 4; Monogram Club 2, 3, 4; Glee Club 4; *The Elk Staff* 4, Circulation Manager; *The Elk Antler Staff* 4, Social Editor; Basketball 1, 2, 3; Tennis 2, 3; Softball 2; Homecoming Attendant 4; Intramurals 1, 2.

ALAN DAVIS CHAPPELL

East High School 2; Latin Club 1; D. O. Club 3, 4; N.C.V.I.C. President 4; Science Club 1; Football 1, 3.

THOMAS ANDERSON CHIPMAN

Glee Club 3, 4; 4-H Club 1; Intramurals 1, 2.

JANE BROWN CRANFORD

Class Treasurer 4; Latin Club 1; Beta Club 3, 4, Chaplain 4; Tri-Hi-Y 1, 2, Vice-President 2; Garden Club 2, 3, 4, Yearbook 3, Secretary 4; Music Club 1, 2, 3, 4; Cheerleader 2; Caperettes 2, 3, 4, Co-captain 3; *The Elk Staff* 4, Editor-in-chief; Student Council 1; Interclub Council 3, 4; D. A. R. Award 4; Girls' State 3; Marshal 3; Intramurals 1, 3; Honor English 3, 4; Senior Superlative.

FRANK PARKER CURTIS, JR.

Latin Club 1; Science Club 1; Industrial Arts Club 1; Glee Club 4; *The Elk Antler Staff* 4, Assistant Sports Editor; Leaders Club 1; J. V. Football 1; J. V. Basketball 1, 2, 3; Basketball 4; Baseball 2, 3, 4; Track 1, 2; Intramurals 1, 2, 3, 4; Honor English 3.

CAROL ANN DARNELL

D. E. Club 3, 4; Office Assistant 3, 4; Intramurals 1, 2.

PATSY LOU DARNELL

D. E. Club 4, Editor-Promotion Manager, Northwestern District Officer, State D. E. Convention; Homecoming Attendant 1, 4; Intramurals 1, 2.

ROBERT GWYN DILLON

Class Vice-President 3; Latin Club 1; Beta Club 3, 4, Vice-President 4; Science Club 1, Treasurer; Monogram Club 2, 3, 4, Vice-President 4; Leaders Club 1, 3, 4; Student Council 2; Interclub Council 4; Basketball 2, 3, 4; Tennis 1, 2, 3, 4, State Tournament 2, 3, 4; N. C. Jr. Science Symposium 2; Intramurals 1, 2, 3, 4; Honor English 3, 4.

JOHNNY YOUNG DOCKERY

Latin Club 1; Beta Club 3, 4; Glee Club 4; Baseball 4; Intramurals 1, 2, 3, 4; Honor English 3, 4.

LANNY GAYLE ELLIS

Kenwood High School 1, 2; Monogram Club 4; Football 3, 4; Track 3; Wrestling 3, 4, Captain 4; Senior Superlative.

JOHN HOWARD FORD

Latin Club 1; Science Club 1, 2; Explorer Scouts 1, 2, 3, 4; Monogram Club 3, 4; Music Club 4; Band 1, 2, 3, 4; Leaders Club 1, 2; J. V. Football 1; Tennis 1, 2, 3, 4; Intramurals 1, 2.

JO ANN FOSTER

Latin Club 1; Beta Club 3, 4, Secretary 4; Tri-Hi-Y 1, 2, 3, 4, Reporter 2, President 4, Council of Carolinas 4; Garden Club 3, 4; Debating Team 3, 4, Conference 3; Girls Athletic Association 3; Caperettes 2, 3, 4; *The Elk Staff* 4, Assistant Editor; *The Elk Antler Staff* 4, Editor; Interclub Council 3, 4; Basketball 1, 2; Homecoming Attendant 4; Intramurals 1, 3, 4; Marshal 3; Honor English 3, 4; Senior Superlative.

STEPHEN MONROE FREEMAN

Latin Club 1; Beta Club 3, 4; Monogram Club 3; Band 1, 2, 3, 4, Captain 4; J. V. Basketball 2, 3; Intramurals 1; Honor English 3, 4.

MARGARET EUNICE GREGORY

Latin Club 1; Beta Club 3, 4; Tri-Hi-Y 1, 2, 3, 4; Intramurals 1, 2, 3; Honor English 3, 4.

CAROLYN ELIZABETH HAMPTON

Latin Club 1; Beta Club 3, 4; Tri-Hi-Y 1, 2, 3, 4, President 2, Blue Ridge Tri-Hi-Y Assembly 2, Interstate Tri-Hi-Y Conference 2, Treasurer 4; Music Club 3, 4, Hymn Chairman 3, 4; Glee Club 4; Girls Athletic Association 3; *The Elk Staff* 4, Photography Editor; *The Elk Antler Staff* 4, Photography Editor; Student Council 4, N. C. Student Council Convention, Western District Student Council Convention; J. V. Basketball 1; Intramurals 1, 2, 3, 4; Honor English 3, 4; Senior Superlative.

SENIOR STATISTICS

ALMA ELDRIDGE HARMON

F.H.A. Club 1; D. E. Club 3, 4, President 4; Intramurals 1, 2.

JUDITH GLENN HARRIS

Latin Club 1; Tri-Hi-Y 1, 2, 3, 4; F.H.A. Club 1, 4; Office Assistant 1, 2; Cheerleader 2; *The Elk Antler* Staff 4, Typist; Intramurals 1, 2; Senior Superlative.

REGINALD LEE HARRIS, III

Thomas Jefferson Junior High School 1; Monogram Club 4; Leaders Club 2, 3, 4; *The Elk* Staff 4, Advertising Manager; *The Elk Antler* Staff 4, Social Editor; J. V. Basketball 2; Tennis 2, 3, 4; Wrestling 3; Intramurals 2, 3, 4; Honor English 3, 4.

SETH D. HARRIS

D. O. Club 3, 4; Library Assistant 2, 3; J. V. Basketball 2, 3; Football 2, 3, 4; Intramurals 2, 3.

VIVIAN ANNETTE HAYES

Latin Club 1; Beta Club 3, 4; Tri-Hi-Y 1; Monogram Club 2, 3, 4; Cheerleader 1, 2, 3, 4, Chief 4; Student Council 1; Interclub Council 4; *The Elk* Staff 4, Class Editor; *The Elk Antler* Staff 4, Feature Editor; Intramurals 1, 2, 3, 4; Honor English 3, 4.

ESKER RAY HINSON

D. O. Club 3, 4; Bus Driver 3; J. V. Basketball 2; Baseball 2; Intramurals 1, 2.

JERRELL PENN HOLLOWAY

Latin Club 1; Beta Club 3, 4, Treasurer 4; Science Club 1; J. V. Football 1; Football 3; Track 1; Intramurals 1, 2; Honor English 3, 4.

STEPHEN MICHAEL HOLLOWAY

Class President 1, Class Vice-President 2; Latin Club 1; Beta Club 3, 4, President 4; Monogram Club 2, 3, 4; *The Elk Antler* Staff 4, Advertising Manager; Student Council 3, 4, Vice-President 3, President 4, Western District Convention 3, Western District Vice-President 4, National Student Council Convention 4; Interclub Council 3, 4, Vice-President 3, President 4; Football 1, 2, 3, 4, Co-Captain 4, Shrine Bowl 4; Basketball 1, 2, 3, 4, Captain 3; Baseball 1, 2, 3, 4; Intramurals 1, 2, 3, 4; Honor English 3, 4; Senior Superlative.

ANNE EVERETT HOWLAND

Latin Club 1; Beta Club 3, 4; Tri-Hi-Y 1, 2, 4, Chaplain 2, Blue Ridge Convention 2; Garden Club 3, 4; Music Club 3, 4, Secretary 4; Office Assistant 4; Caperettes 2, 3, 4; Student Council 4; Homecoming Attendant 3, 4; Intramurals 1, 2; Honor English 3, 4.

ANDREW JACKSON, JR.

Science Club 2; D. O. Club 3, 4, Treasurer 4; Bus Driver 2; J. V. Football 1; Football 3, 4; Track 1; Intramurals 1, 2.

PENNY DEE JACKSON

Latin Club 1; Tri-Hi-Y 1, 4; Glee Club 4; Caperettes 3, 4; Cheerleader 1; *The Elk Antler* Staff 4, Fashion Editor; Intramurals 1, 3.

ALEXANDER HARRISON JENNINGS

Class President 2, Class Vice-President 4; Latin Club 1; Beta Club 3, 4; Science Club 1; Boy Scouts 1, 2; Monogram Club 3, 4; *The Elk* Staff 4, Sports Editor; *The Elk Antler* Staff 4, Sports Editor; Student Council 3; Interclub Council 4; J. V. Basketball 1; Football 1, 2, 3, 4, Co-captain 4; Basketball 2, 3; Baseball 1, 2, 3, 4; Track 1, 2, 3; Intramurals 1, 2, 3, 4; Honor English 3.

GARY L. JENNINGS

Latin Club 1; Industrial Arts Club 1, Secretary-Treasurer; Science Club 1; Glee Club 4; Bus Driver 3, 4; *The Elk* Staff 4, Art Editor; *The Elk Antler* Staff 4, Art Editor; Intramurals 1, 2; Honor English 3, 4.

VIVIAN ETTA JOHNSTON

F.H.A. Club 1, Historian; D. E. Club 4; J. V. Basketball 1, 2; Softball 1, 2; Intramurals 1, 2.

LARRY DALE JORDAN

Latin Club 1; Industrial Arts Club 1; Science Club 1; Monogram Club 4; Leaders Club 2; *The Elk Antler* Staff 3, Fashion Editor; Football 1, 3, 4, Manager 1; Intramurals 2, 3, 4.

R. O. LANIER, JR.

Cleveland High School 1, 2; Class Secretary 3; Beta Club 3, 4; Monogram Club 3, 4; Football 4; Basketball 3, 4; Honor English 4.

THOMAS BARRETT LANKFORD

Class Secretary 4; Latin Club 1; Beta Club 3, 4; Science Club 1; Monogram Club 3, 4, President 4; Leaders Club 4; Interclub Council 4; J. V. Basketball 2; Tennis 1, 2, 3, 4, State Tournament 2, 3, 4; Intramurals 1, 2; Honor English 3, 4; Senior Superlative.

RONALD DAVIS LONG

Science Club 2; 4-H Club 1; D. O. Club 4, Program Chairman; Bus Driver 2; J. V. Football 1; Intramurals 1, 2.

PATRICIA ANN LYON

F.H.A. Club 1; D. E. Club 4, Chaplain; Office Assistant 4; J. V. Basketball 1, 2; Intramurals 1, 2.

SAMUEL LAWRENCE McCOIN

Class Vice-President 1; Class Treasurer 2; Latin Club 1; D. O. Club 4, Reporter; Monogram Club 2, 3, 4; Football 1, 2, 3, 4, Co-captain 4; Basketball 2, 3, 4; Baseball 1, 2, 3, 4; Track 1, 2, 3; Intramurals 1, 2, 3, 4.

STEPHEN LLOYD MARTIN

Latin Club 1; Science Club 1; Boy Scouts 1; Music Club 4; Glee Club 4; *The Elk Antler* Staff 4, Managing Editor; Basketball 4; Tennis 1, 2, 3, 4; Intramurals 1, 4; Honor English 3, 4.

SARA ELLEN MATHIS

Tri-Hi-Y 2, 4; F.H.A. Club 1, 4, Treasurer 1, President 4; Glee Club 4; Leaders Club 2; Interclub Council 4; J. V. Basketball 1, 2; Tennis 4; Softball 1, 2; Honor English 3, 4.

WALTER CADE METZ, JR.

Class Secretary 1, Class Treasurer 3, Class President 4; Latin Club 1; Beta Club 3, 4; Science Club 1, Reporter; Monogram Club 3, 4, Treasurer 4; Leaders Club 4; Student Council 2, 4, Parliamentarian 4; Interclub Council 4; J. V. Basketball 2; Football 2; Basketball 3, 4; Tennis 1, 2, 3, 4, State Tournament 2, 3, 4; Intramurals 1, 2; Marshal 3, Chief; Honor English 3, 4; Senior Superlative.

WILLIAM AVERY NEAVES, II

Woodberry Forest School 2; Latin Club 1; Monogram Club 4; Football 1, 3, 4; Basketball 1, 3, 4; Tennis 1, 3, 4; Intramurals 1, 3.

JOSEPH PAUL NEWMAN

Class Vice-President 1, Class Secretary 2; D. O. Club 4; Monogram Club 2, 3, 4; Football 1, 2, 3, 4, Co-captain 4; Basketball 4; Baseball 1, 2, 3, 4; Track 2; Wrestling 1, 2, 3; Intramurals 1, 2, 3, 4.

MARTHA ANN PARDUE

Latin Club 1; Beta Club 3, 4; Monogram Club 3, 4; Girls Athletic Association 3, Convention 3; Leaders Club 4; *The Elk Antler* Staff 4, Circulation Manager; Interclub Council 4; Basketball 1, 2, 3, 4, Captain 4; Tennis 1, 2, 3, 4; Softball 2, 3, 4; Intramurals 1, 2, 3, 4; Honor English 3, 4; Senior Superlative.

GABRIELLE PARK

F.H.A. Club 1, 3, 4; D. E. Club 4; Intramurals 1, 2.

SENIOR STATISTICS

SUE ANN PENNELL

Latin Club 1; Tri-Hi-Y 1, 4; F.H.A. Club 1, 3; J. V. Basketball 1; Intramurals 1, 3; Honor English 4.

WILLIAM BERT PHILLIPS

Industrial Arts Club 1; D. O. Club 3, 4; Intramurals 1, 2.

EDGAR HERBERT ROYALL

Bus Driver 3, 4; Intramurals 1, 2; Senior Superlative.

ANN VERNON SAGAR

Latin Club 1; Beta Club 3, 4; Tri-Hi-Y 1, 2, 3, 4, Treasurer 2, Secretary 4, Council of Carolinas 4; Garden Club 3, 4; Music Club 3, 4; Debating Team 4, Conference 4; Caperettes Manager 4; Girls' Athletic Association 3; Teening Column 4; Homecoming Attendant 4; Intramurals 1, 3, 4; Marshal 3; Honor English 3, 4; Senior Superlative.

GARY DALE SALLEY

Industrial Arts Club 1; D. O. Club 3, 4; Intramurals 1, 2.

LINDA SUE SCOTT

Latin Club 1; Beta Club 4; Tri-Hi-Y 1; F.H.A. Club 3; Monogram Club 3; Library Assistant 4; Girls' Athletic Association 3; Student Council 4; Basketball 1, 2; Softball 3; Intramurals 1, 2, 3; Honor English 3, 4.

ANITA GAIL SHORE

Latin Club 1; Beta Club 3, 4; Tri-Hi-Y 1, 2, 3, 4; Garden Club 3, 4; Intramurals 1, 3; Honor English 3, 4.

BONNIE LOU SHORE

F.H.A. Club 1, 2, 3; 4-H Club 1, 2; D. E. Club 3, 4; Softball 1; Intramurals 1, 2.

BETTY ANN SLOOP

Latin Club 1; Tri-Hi-Y 1, 4; F.H.A. Club 1, 3; J. V. Basketball 1; Intramurals 1, 3.

KATIE SUE SPANN

F.H.A. Club 1, 2, 4; 4-H Club 1; D. O. Club 4; Intramurals 1, 2.

MARGARET ANN SPARKS

4-H Club 1; D. E. Club 4; Glee Club 3; Library Assistant 2, 3; *The Elk Antler* Staff 3; Intramurals 1, 2.

BETTY CAROLYN SPRINKLE

F.H.A. Club 1, 3, Vice-President 3; D. E. Club 4; Intramurals 1, 2.

LARRY WAYNE STEWART

Class President 3; Latin Club 1; Monogram Club 4; Student Council 2, 4, Treasurer 4; Interclub Council 4, Treasurer 4; Football 1, 3, 4; Basketball Manager 1; Baseball 3, 4; Intramurals 1, 2, 3, 4; Honor English 3, 4; Senior Superlative.

MELVIN PIKE SULLIVAN

Latin Club 1; Industrial Arts Club 1; Science Club 1; Boy Scouts 2, 3, 4; Monogram Club 3, 4; Baseball Manager 1, 2, 3, 4; Culver Summer School Scholarship 1, 2; Intramurals 1, 2.

SUSAN GRACE TAYLOR

Tri-Hi-Y 1, 2, 4, Chaplain 1; F.H.A. Club 1, 2, 4; Glee Club 4; Intramurals 2.

LOIS GENEVIEVE TEAGUE

F.H.A. Club 1, 2; 4-H Club 1; D. E. Club 3, 4; Intramurals 1, 2.

FLOYD VAN ANTWERP, JR.

Boy Scouts 2, 3, 4, Secretary 3; Intramurals 1, 2.

SAMUEL JAMES WADDELL

Mountain Park High School 1, 2; D. E. Club 4; Baseball 3; Wrestling 4.

WILLIE ANN WADDELL

Mountain Park High School 1, 2; Office Assistant 3; D. E. Club 4.

CAROLYN JANE WALTERS

Latin Club 1; Beta Club 3, 4; F.H.A. Club 3; *The Elk Antler* Staff 4, Circulation Manager; Student Council 1; Intramurals 1, 3; Honor English 3, 4.

RUTH ANN WAMPLER

F.H.A. Club 1, 3; D. E. Club 4, Treasurer; Monogram Club 4; Band 3; Glee Club 3; Homecoming Attendant 4; Intramurals 1, 2.

BETTY JANE WEAVER

Latin Club 1; Beta Club 3, 4; Tri-Hi-Y 1, 2, 4; Garden Club 3, 4, Treasurer 4; Music Club 1, 2, 3, 4, Secretary 3; Debating Team 4, Conference 4; Cheerleader 2; Caperettes 3, 4; Intramurals 1, 2; Marshal 3; Honor English 3, 4.

WILLIE MAE WELBORN

F.H.A. Club 1, 4; D. O. Club 3, 4, Publicity Chairman 3, Secretary 4; Intramurals 1, 2.

O. W. WHITE, JR.

Beta Club 3, 4; D. O. Club 3, 4, Vice-President 3, President 4, N.C.V.I.C. Vice-President 4; Monogram Club 4; Football 4; Track 2; Intramurals 1, 2; Honor English 3, 4; Senior Superlative.

PATRICIA ANN WHITE

Latin Club 1; F.H.A. Club 1; D. E. Club 4; Intramurals 1, 3.

WAYNE COY WILMOTH

D. E. Club 3, 4; D. O. Club 4; Intramurals 1, 2.

IDA ELIZABETH WINDSOR

Latin Club 1; Beta Club 4; F.H.A. Club 1; D. E. Club 4; J. V. Basketball 1, 2; Softball 1, 2; Intramurals 1, 2.

NANCY CAROLE WRIGHT

Latin Club 1; Beta Club 3, 4; Tri-Hi-Y 1, 2, 4, Secretary 2, Reporter 4, Interstate Tri-Hi-Y Conference 2; Garden Club 3, 4, President 4; Music Club 1, 2, 3, 4, Vice-President 3, President 4; Office Assistant 4; Caperettes 2, 3, 4; Student Council 3; Interclub Council 4; Girls' State 3; Homecoming Attendant 4; Intramurals 1, 2; Marshal 3; Honor English 3, 4; Senior Superlative.



MOST POPULAR

Jo Ann Foster

Larry Stewart

Who's



BEST PERSONALITY

Carolyn Hampton

Jerry Blackburn

MOST ATHLETIC

Martha Pardue

Steve Holloway



Who

MOST INTELLIGENT

Carole Wright

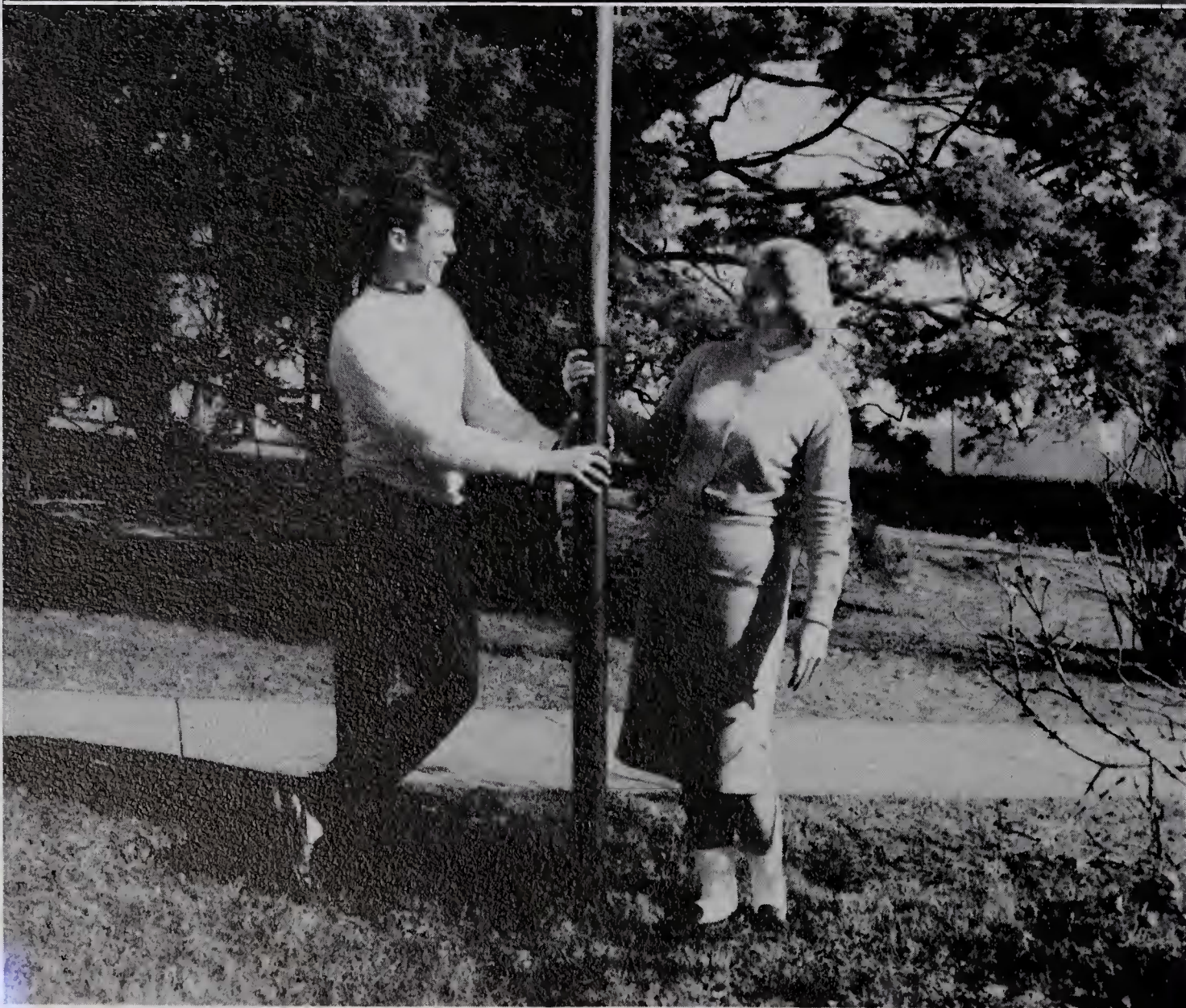
Walter Metz





WITTIEST
Ann Sagar
Edgar Royall

Who's



BEST SPORT
Judy Harris
Lanny Ellis

MOST ATTRACTIVE

Molly Barker

O. W. White



Who

MOST LIKELY TO
SUCCEED

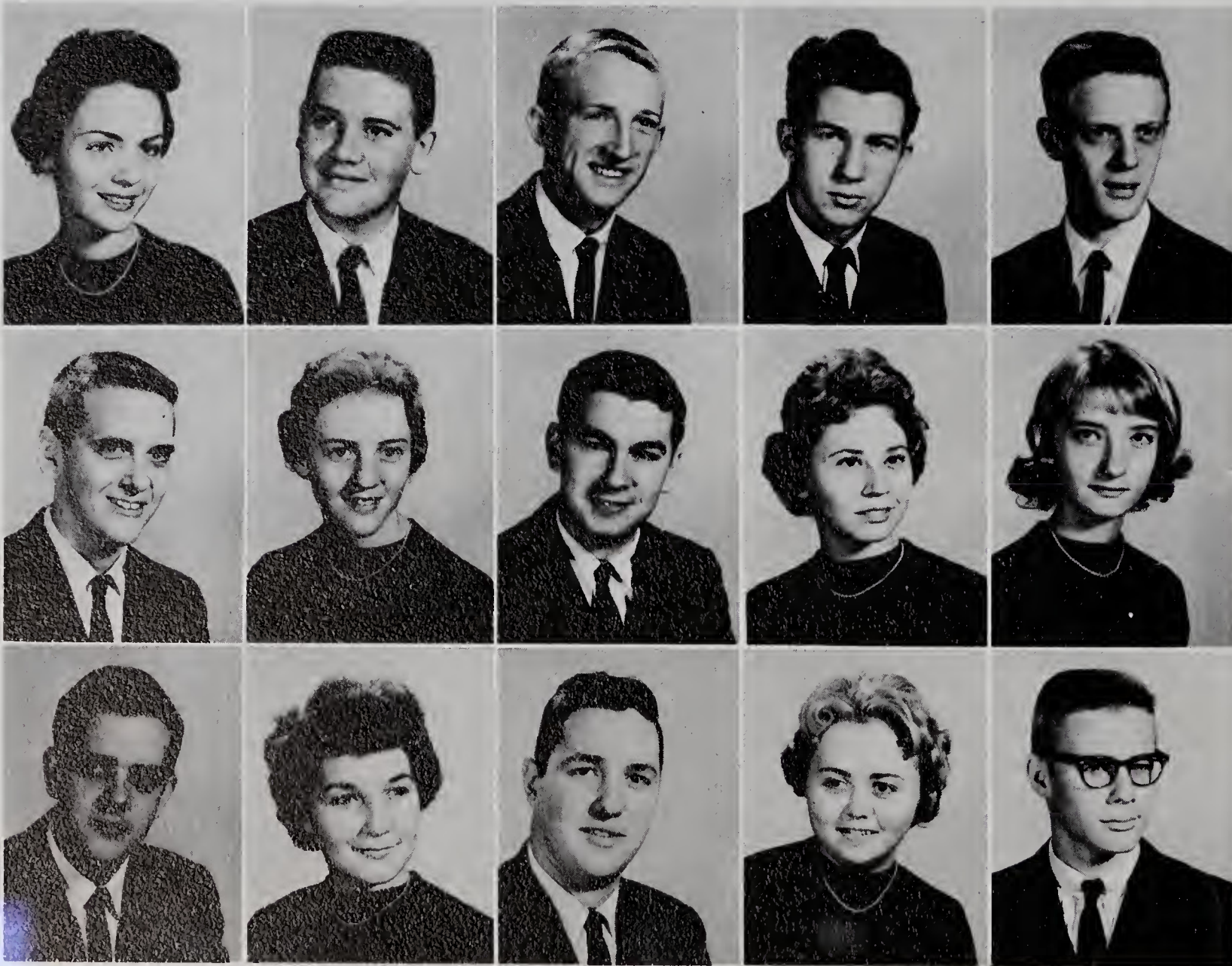
Jane Cranford

Barry Lankford



J u n i o r s

HAROLD WEATHERMAN.....*President*
 DWAYNE HAMPTON.....*Vice-President*
 SARAH DAVIS.....*Secretary*
 ANNE PLASTER.....*Treasurer*



Barbara Anderson
 Bill Blackburn
 Jerry Blackburn
 Douglas Brown
 Harold Brown

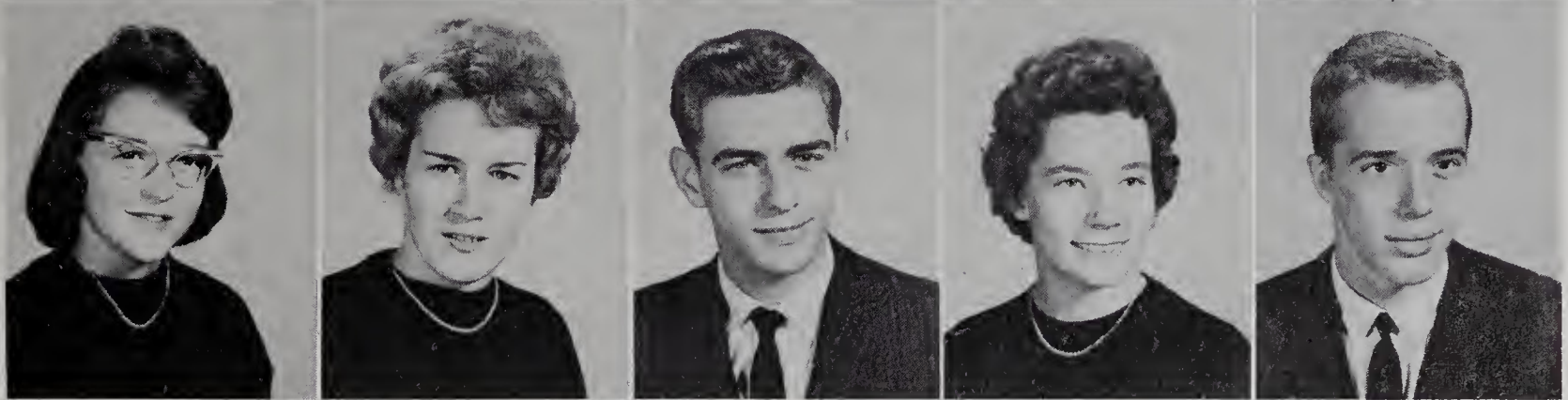
Joe Brown
 Johnsie Brown
 Terry Byrd
 Carole Calhoun
 Kay Caudle

Larry Caudle
 Lola Chipman
 Richard Cockerham
 Katie Collins
 Carl Copple

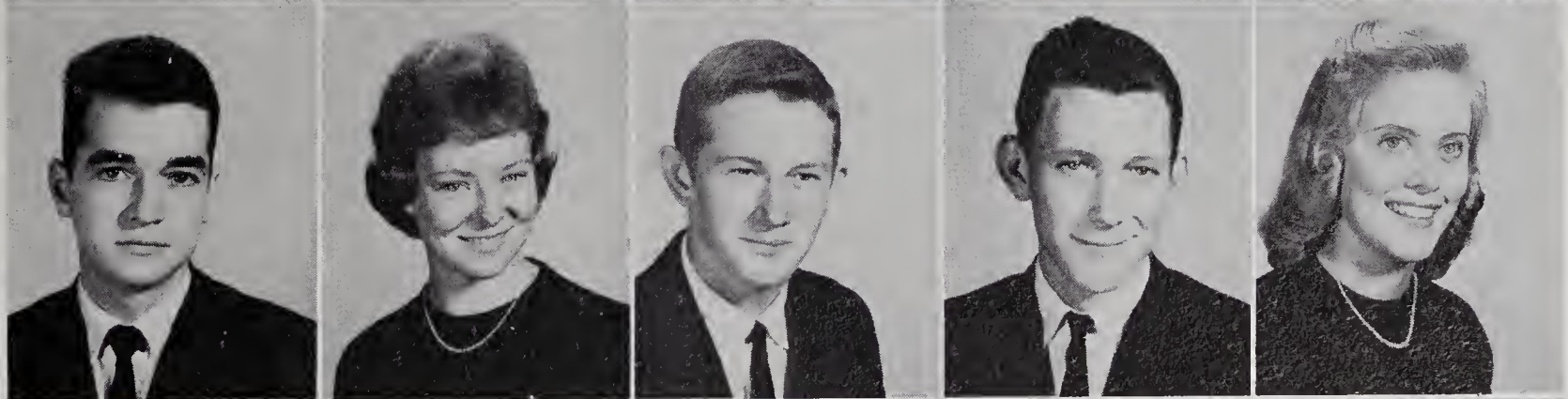
Pattie Cummings
 Sarah Davis
 Ann Day
 Susan Day
 Eddie Deathrage



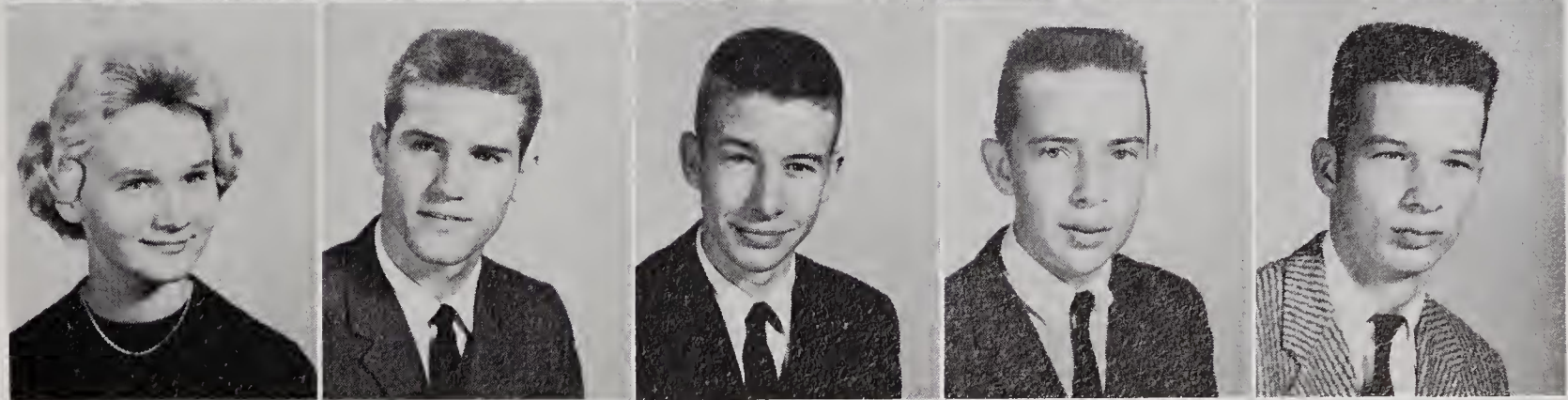
Caroline Dillon
 Polly Eller
 Wayne Foreman
 Mary Alice Fox
 Eric Freed



Hack Frye
 Bonnie Gambil
 Charles Gentry
 Dalin Gentry
 Sharon Gentry



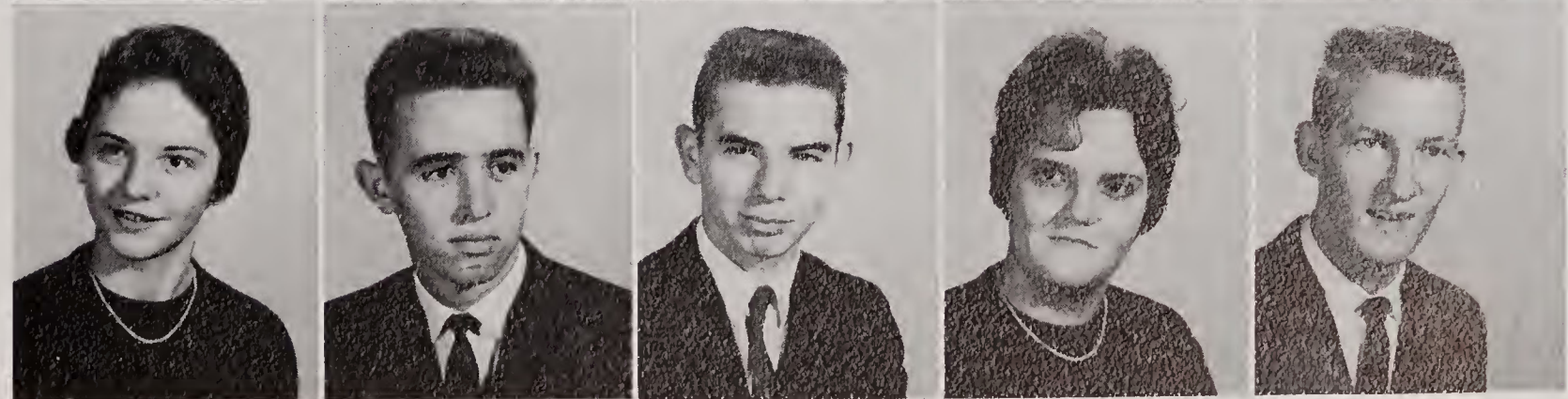
Judy Gilmore
 Johnny Guyer
 Dwayne Hampton
 Henry Harpe
 David Harris



Meg Harris
 Ronnie Holbrook
 Linda James
 Brenda Key
 Linda Lanning



Pat Long
 Freddie Mastin
 Fred Mathis
 Phyllis Mauldin
 Ray McCain





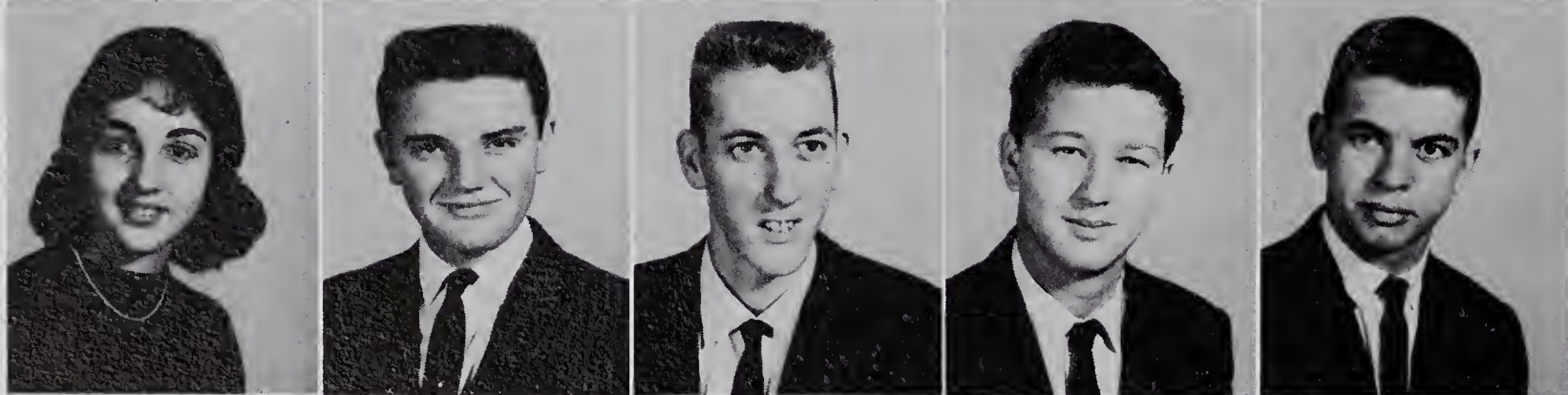
Nancy Mounce
Jimmy Nail
Elizabeth Nance
Melba Nance
Miriam Nicks



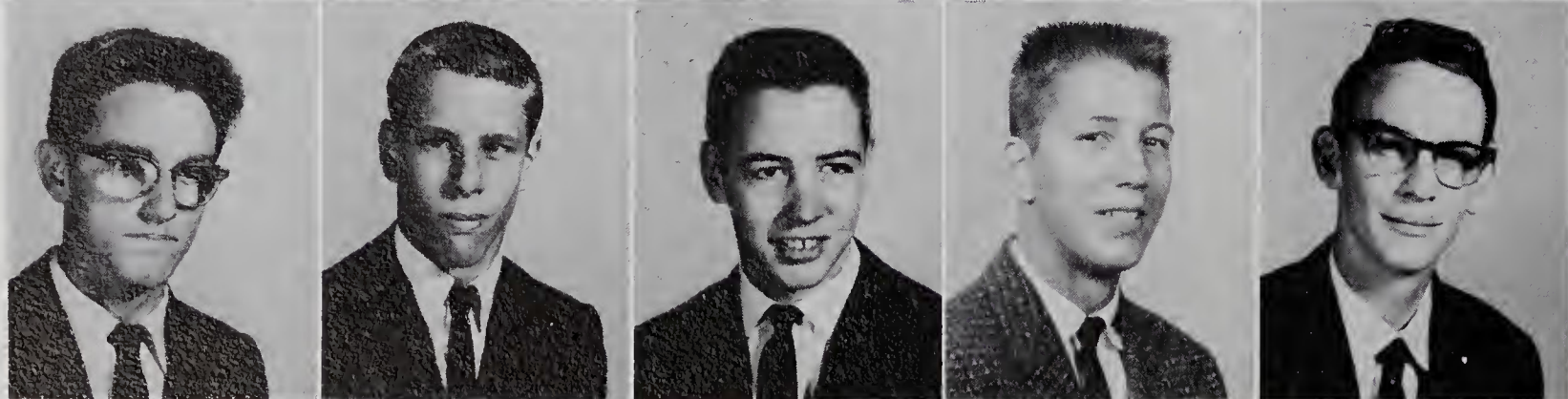
Kenneth Pardue
Anne Plaster
Jimmy Poplin
Margaret Price
Dean Reynolds



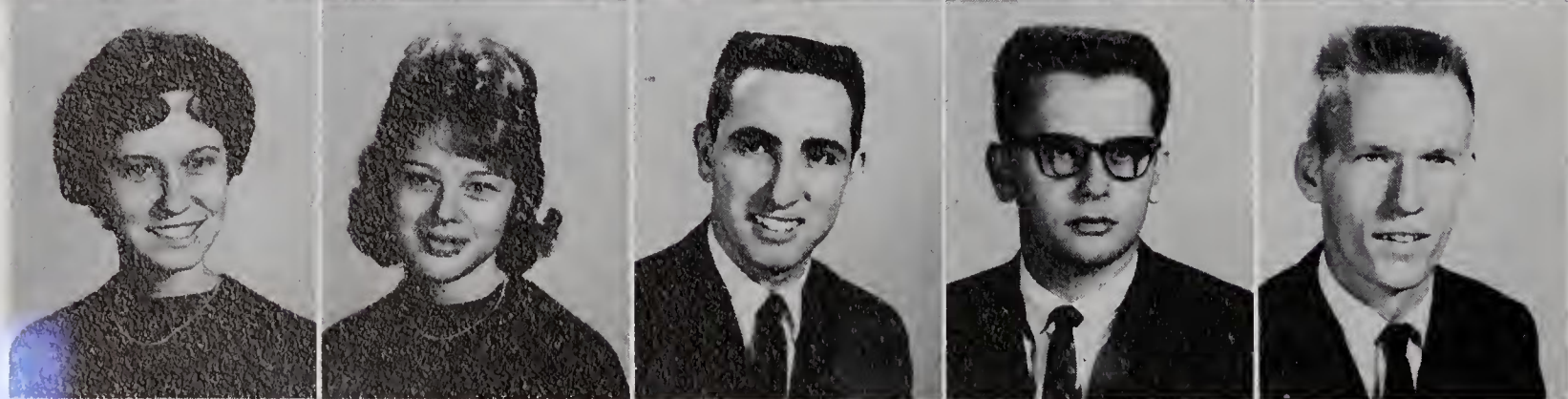
Patsy Rhymer
Kathy Rhyne
Sandra Sale
Eddie Salley
Jane Shepherd



Barbara Silverman
Larry Slawter
Ronnie Spann
Steve Sprinkle
Gary Stevenson



Billy Taylor
Bill Thompson
Gary Vestal
Harold Weatherman
Larry West



Donna Wheeler
Carol White
Eddie Wiles
James Willey
Seth Wooten



JOHNSIE BROWN



PATTY CUMMINGS



PHYLLIS MAULDIN



CAROLINE DILLON
Chief

JUNIOR MARSHALS

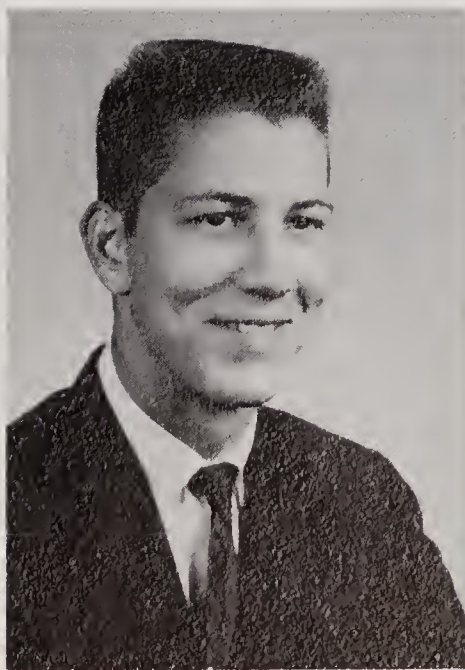
MIRIAM NICKS



ANNE PLASTER



HAROLD WEATHERMAN

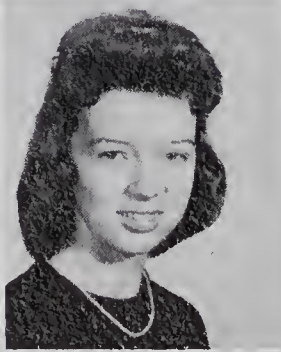
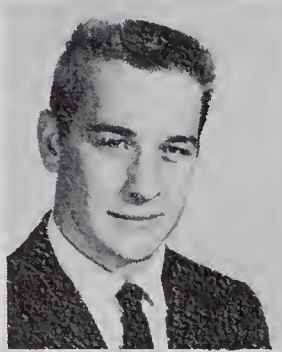


DONNA WHEELER

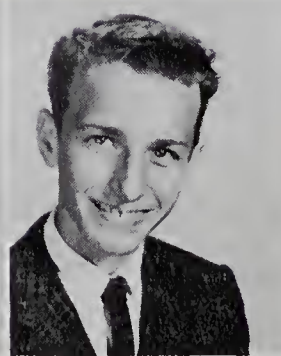
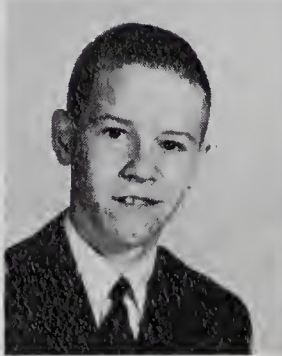
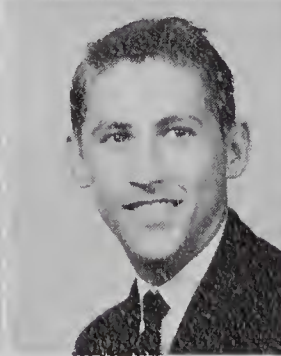


S
O
P
H
O
M
O
R
E
S

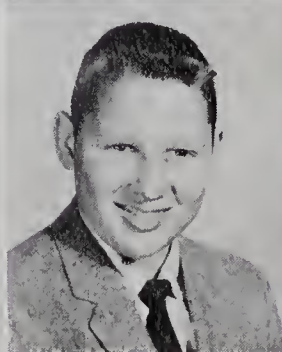
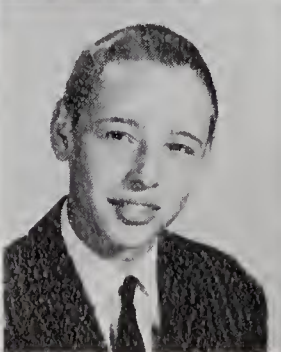
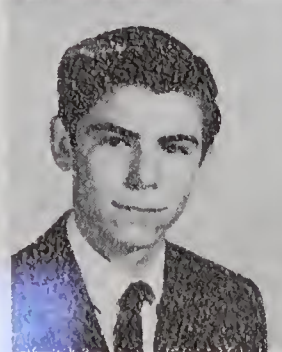
BOB METZ.....*President*
 CHARLES MYERS.....*Vice-President*
 TONI JOLLEY.....*Secretary*
 ANN LeFURGEY.....*Treasurer*



Gale Adams
 Hilda Atkins



Peggy Bivins
 James Blackburn
 Willa Blevins
 David Brown
 Danny Burchette

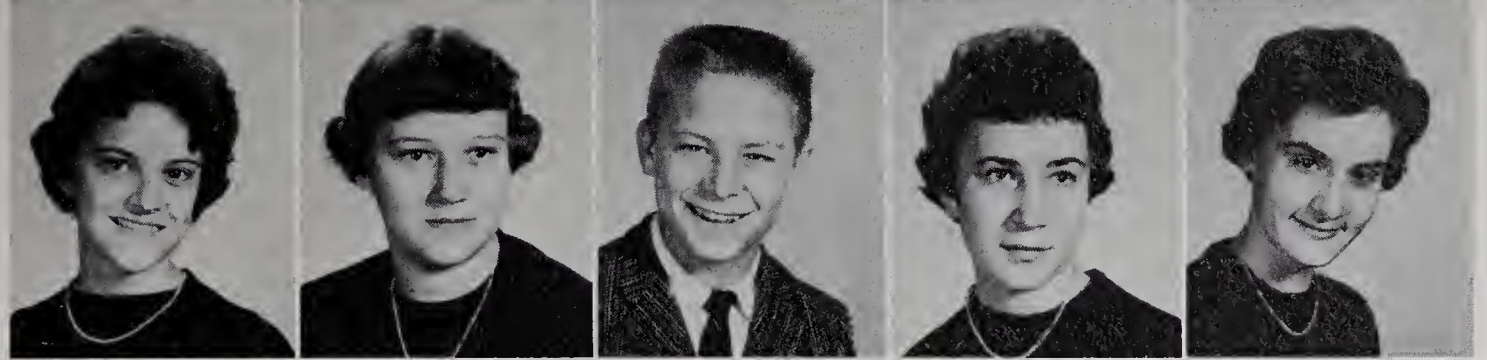


Dwayne Byrd
 Lois Byrd
 Clyde Carroll
 Bobby Carter
 Jerry Carter

Judy Carter
 Linda Carter
 Sandra Caudle
 Joyce Clark
 Wanda Cleary



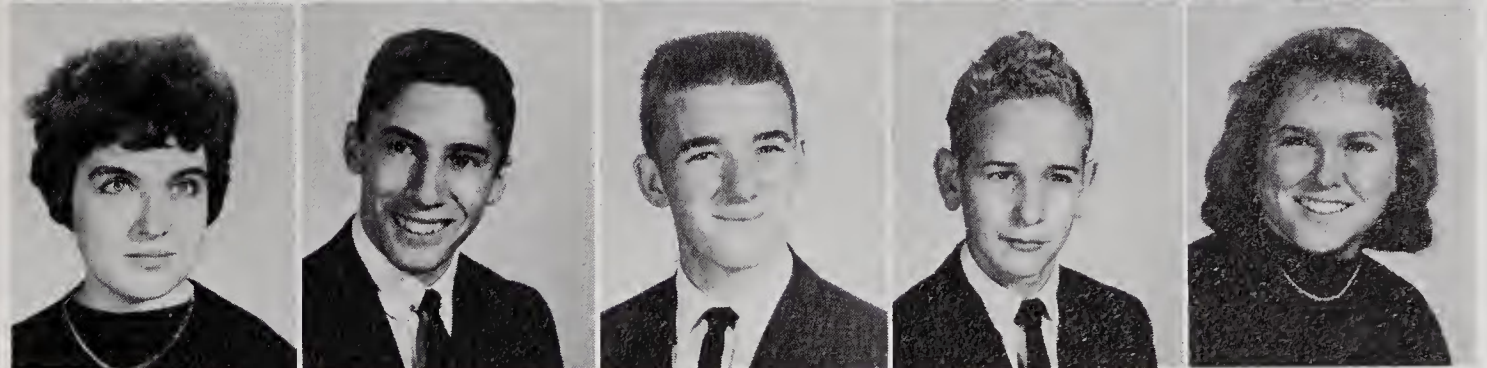
Carol Cooke
 Joyce Corder
 Tony Darnell
 Barbara Dixon
 Nancy Dobbins



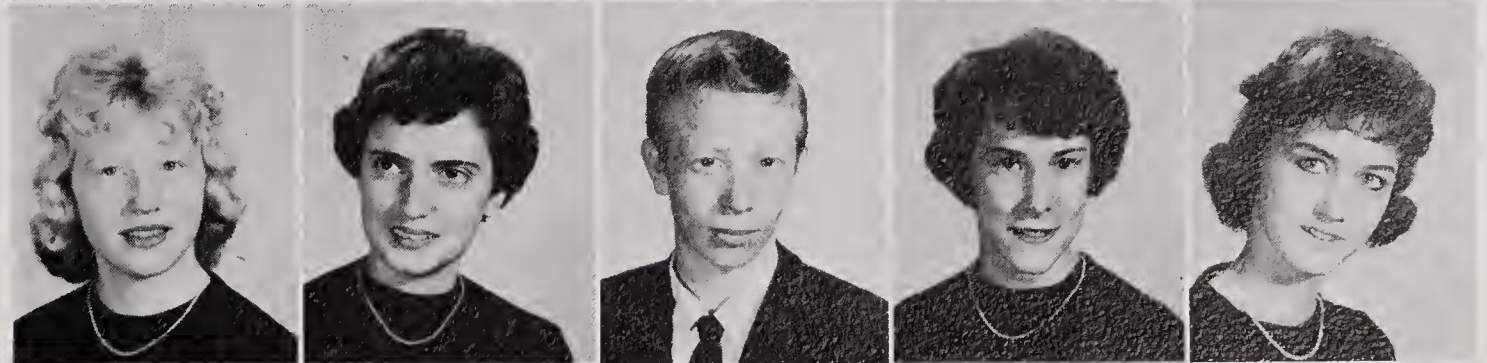
Judy Dockery
 Florence Eller
 Kay Ellis
 Virginia Ford
 Coleman Francis



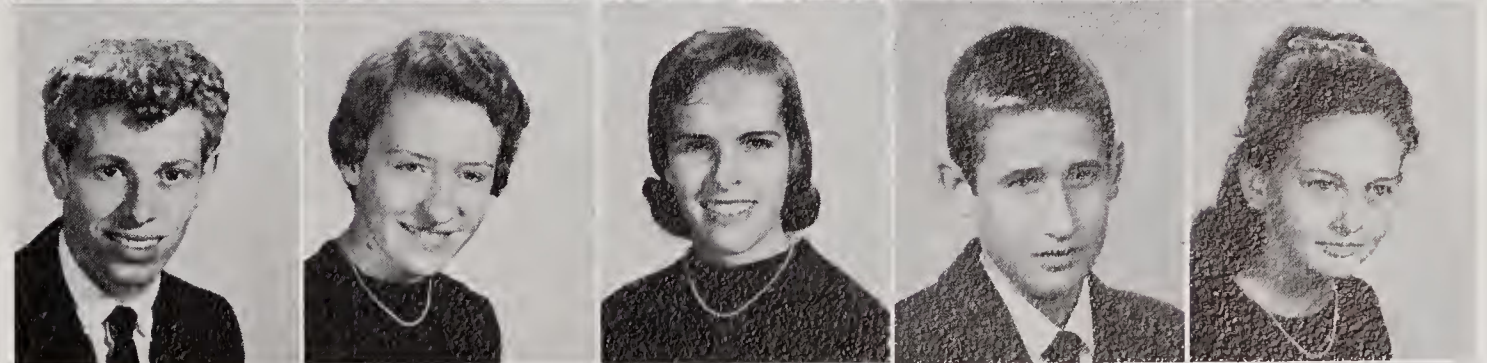
Glenetta Graham
 Mark Green
 Bobby Griffin
 Sammy Hall
 Sylvia Hanks



Rebecca Harpe
 Abigail Harris
 Gary Harris
 Helen Harris
 Rita Harris



Roger Harris
 Ann Hayes
 Elizabeth Ann Hayes
 Tommy Hemric
 Anne Henderson



Tommy Higgins
 Norris Holbrook
 Toni Jolley
 Johnny Kennedy
 Beverly Lawrence





Ann LeFurgey
Ann McNeil
Jimmy McRae
Martha Mann
Philip Martin



Ellen Meed
Bobby Metz
Vickie Miller
Lee Moncus
Faye Mounce



Charles Myers
Cynthia Nelson
Elmer Newman
Frances Park
Lois Park



Anna Poplin
Nancy Poteat
Judy Ratledge
Colleen Renegar
Carol Salmons



Johnny Settle
Eddie Snow
Brenda Sofley
Maxie Spann
Elizabeth Sparks



Carol Stoker
Sue Stone
Ronnie Sturgill
Danny Swain
Irma Teague



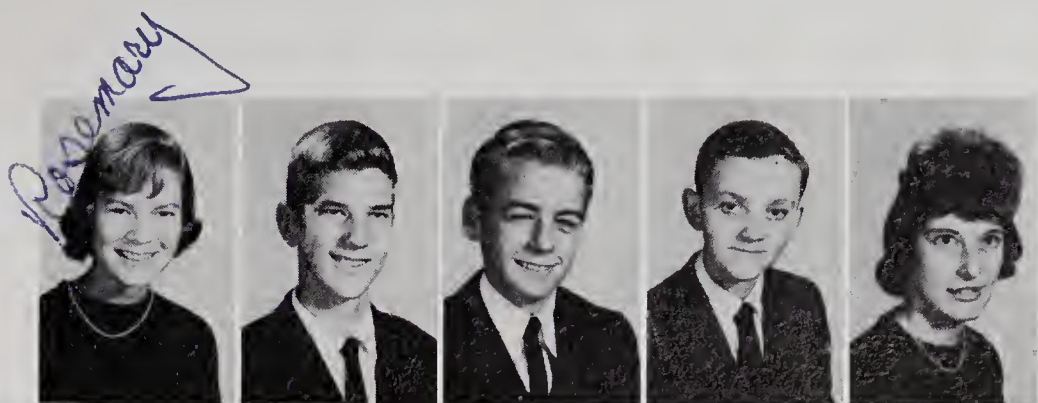
Jack Waddell
Mary Waring
Dale Wiles
Barbara Wilmoth
Priscilla Wilmoth



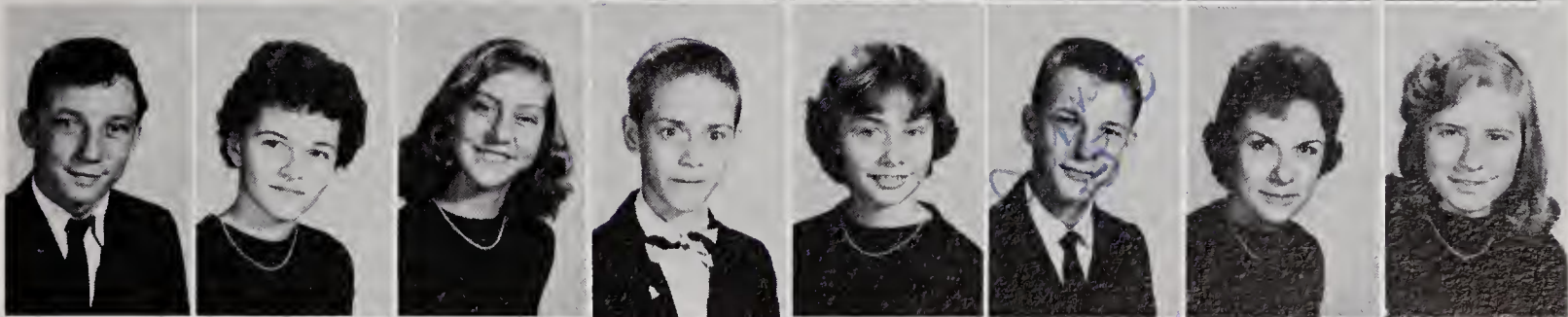
JOE FREEMAN.....President
 JIMMY POWERS.....Vice-President
 BECKY MELTON.....Secretary-Treasurer

FRESHMEN

Rosemary Alexander
 Richard Atkinson
 Danny Balzer
 Bernard Benge
 Judy Benge



Dickie Billings
 Tommie Bryant
 Bessie Burchette
 Charles Burchette
 Lana Buxton
 Johnny Byrd
 June Byrd
 Nancy Calloway



Mary Cardwell
 Carrol Carlton
 Jerry Carpenter
 Carolyn Carter
 Ronald Carter
 Diana Chatham
 Barbara Cockerham



Judy Cockerham
 Michael Cockerham
 Bobby Colbert
 Sandra Collins
 Dwayne Combs
 Wayne Combs
 Ann Cook
 Donald Cooper



Pam Cox
 Wynne Dillon
 Morris Disher
 Stephen Dobbins
 Gary Dornburg
 Amy Eldridge
 Patsy Eldridge
 Patricia Freed

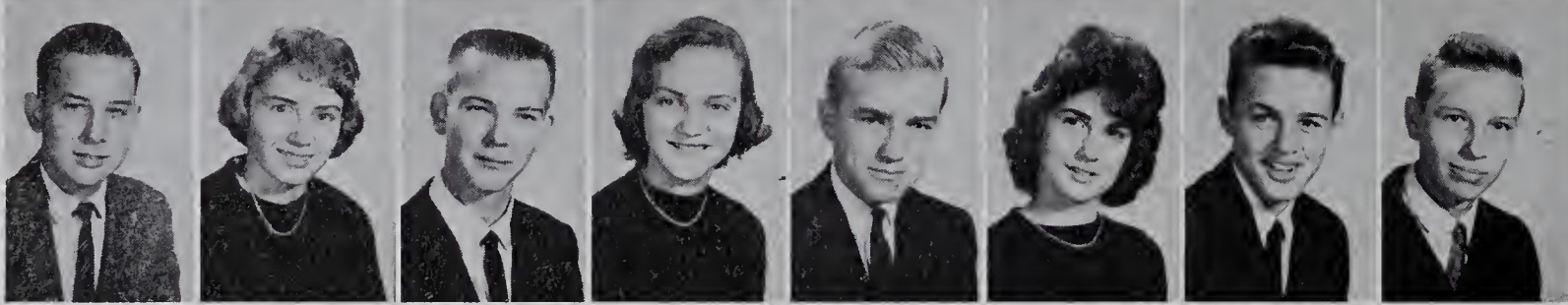




Joe Freeman
Jimmy Gaither
Judy Gentry
Carolyn Hall
Johnny Hall
Lillian Hanks
Sandra Hayes
Jan Haynes



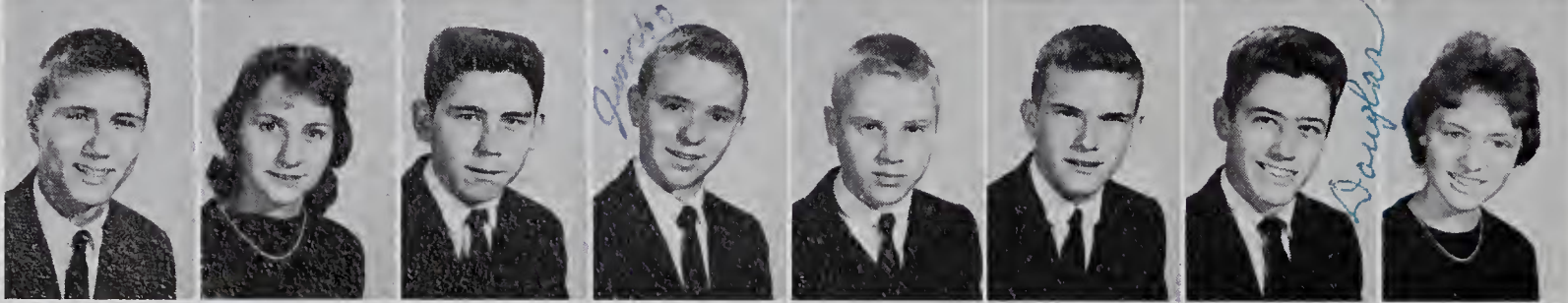
Tommy Holloway
Elaine Huffstickler
Ann Hutchinson
Pratt Isenhour
Carrie Kirkman
Johnny Lankford
Margaret Laster
Gerald Lawrence



Bobby Layell
Ann Lewis
Larry Luffman
Mary Lou McCoin
David McRae
Connie Martin
Benny Maston
Johnny Mathis



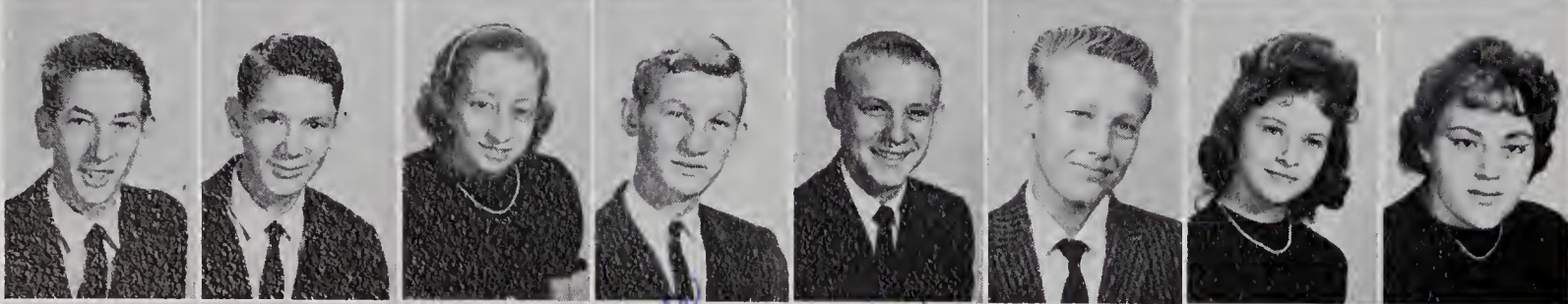
Mary Mathis
Linda Mauldin
Becky Melton
Delma Money
Linda Money
Earl Mounce
Modene Newman
Elaine Nixon



Dick Noe
Janice Park
Sam Poplin
Jimmy Powers
Roy Prevette
Perry Reece
Doug Reinhardt
Derena Roberts



Marian Sagar
Tommy Shore
Carol Simmons
Mickey Sloop
Carol Smith
Tracy Smith
Johnny Snow
Sarah Southard



Grady Spann
Jimmy Stimpson
Jane Stoker
Jerry Swain
Roger Swain
Larry Tilly
Jamie Transou
Jo Vestal



Billy Waddell
Larry Wagoner
Wanda Wagoner
Mahala Walters
Eleanor Weaver
Carroll Williams
Benny Yarboro
Mickey Yarboro



SALLY MANN.....*President*
 BOBBY WINDSOR.....*Vice-President*
 DAPHNE ALDRIDGE.....*Secretary*
 JACKIE WALKER.....*Treasurer*

EIGHTH GRADE

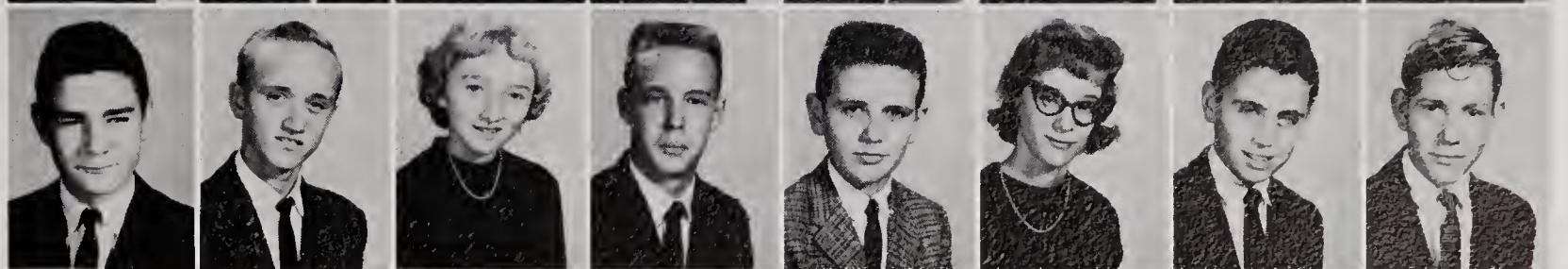
Daphne Aldridge
 Jimmy Amburn
 Andy Anderson
 Carolyn Atkins
 Steve Ball
 Graham Blackburn
 Vivian Blackburn



Morris Bradshaw
 David Brendle
 Patsy Burchette
 Mary Burton
 Ezra Byrd
 Tommy Callaway
 Margaret Carson
 Claude Carter



Carl Chipman
 Herbert Chipman
 Aleta Cochran
 Bobby Cockerham
 Ronnie Cockerham
 Sharon Coker
 James Collins
 Harold Combs



Shelby Combs
 Ralph Cooke
 Wanda Cooper
 Joie Copeland
 Sue Couch
 Sandra Dancey
 Daphne Eldridge
 Bonda Eller



Joanny Kay Foster
 Granville Gentry
 Larry Gentry
 Lynn Gentry
 Sue Gentry
 Tommy Golden
 Bonnie Gregory
 David Griffin



Sandra Griggs
 Danny Hall
 Jimmy Harrell
 Betsy Harris
 Jo Harris
 Kenneth Harris
 Jimmy Haynes
 Paula Hinshaw





Chris Hemric
Sandra Jackson
Buddy Jenkins
Patricia Johnson
Steve Johnson
Patricia Jolly
Betty Keesee
Chatzie Kirk



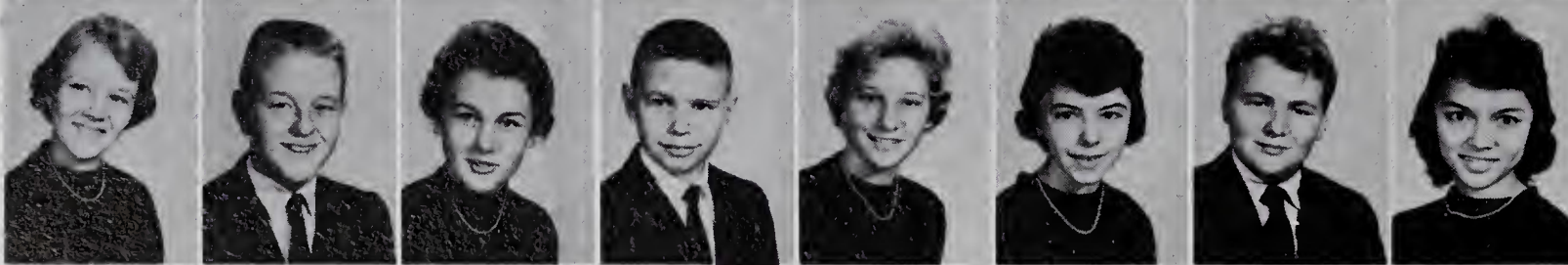
Bobby Laffoon
Lettie Lawrence
Mary Jane Leinback
Kay Luffman
Clara Mae Lyles
Jeff Lyon
Sally Mann
Brenda Marion



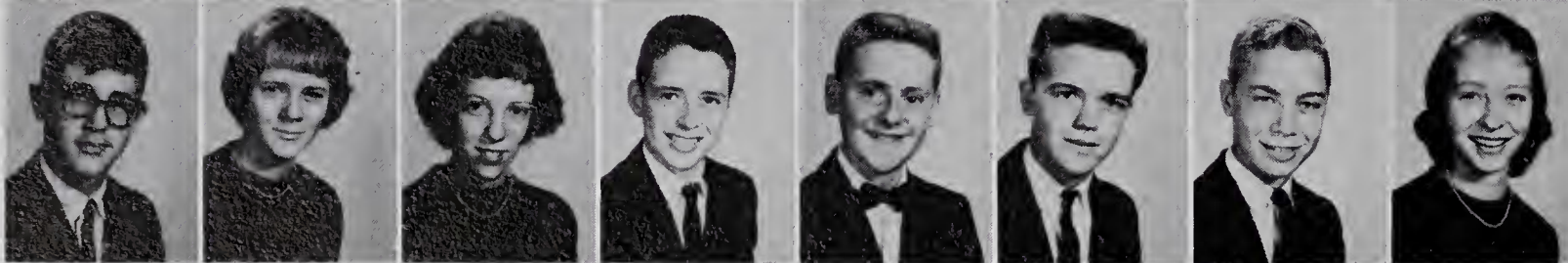
Janice Marion
Jack Marsh
Max Martin
James Miller
Jane Myers
Karen Myers
Eldon Nance
Mike Neaves



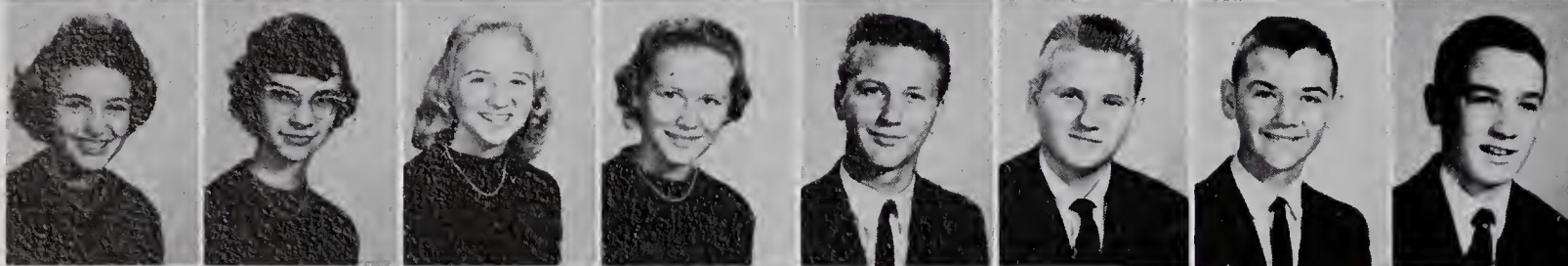
Chris Page
Ronnie Pardue
Joe Partin
Vickie Pearson
Marilyn Plaster
Charles Poplin
Wanda Gay Poplin
Jim Price



Shelia Ray
Keith Reinhardt
Carolyn Royall
David Royall
Kathy Royall
Willie Sue Royall
Lavern Salley
Judy Scott



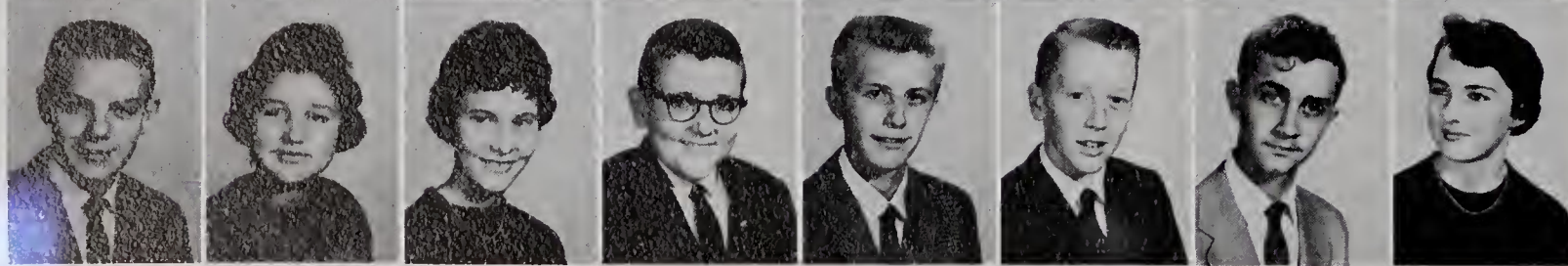
Charles Settle
Kay Settle
Dale Sexton
Jimmy Shepherd
Bucky Sigmon
Steve Slawter
Donald Smith
Geraldine Smith



Sherry Smith
Betty Snow
Bobbie Southard
Lynn Sprinkle
Tim Sprinkle
Ronnie Stoker
David Sturgill
Johnny Swain



Hal Templeton
Susan Terrell
Stephen Thomas
Lin Thomasson
Sammy Thompson
Gary Tulbert
Sandy Uldrick
Jackie Walker



Mike Walters
Patsy Walters
Dare Wiles
Robert Willey
Larry Wilmoth
Bobby Windsor
Kermit Wood
Nonnie Woodruff

HOMECOMING	44-48
Parade	45
Queen	46
Class Attendants	47
Club Sponsors	48
JUNIOR & SENIOR	49
DANCES	50

f E a t u r e s

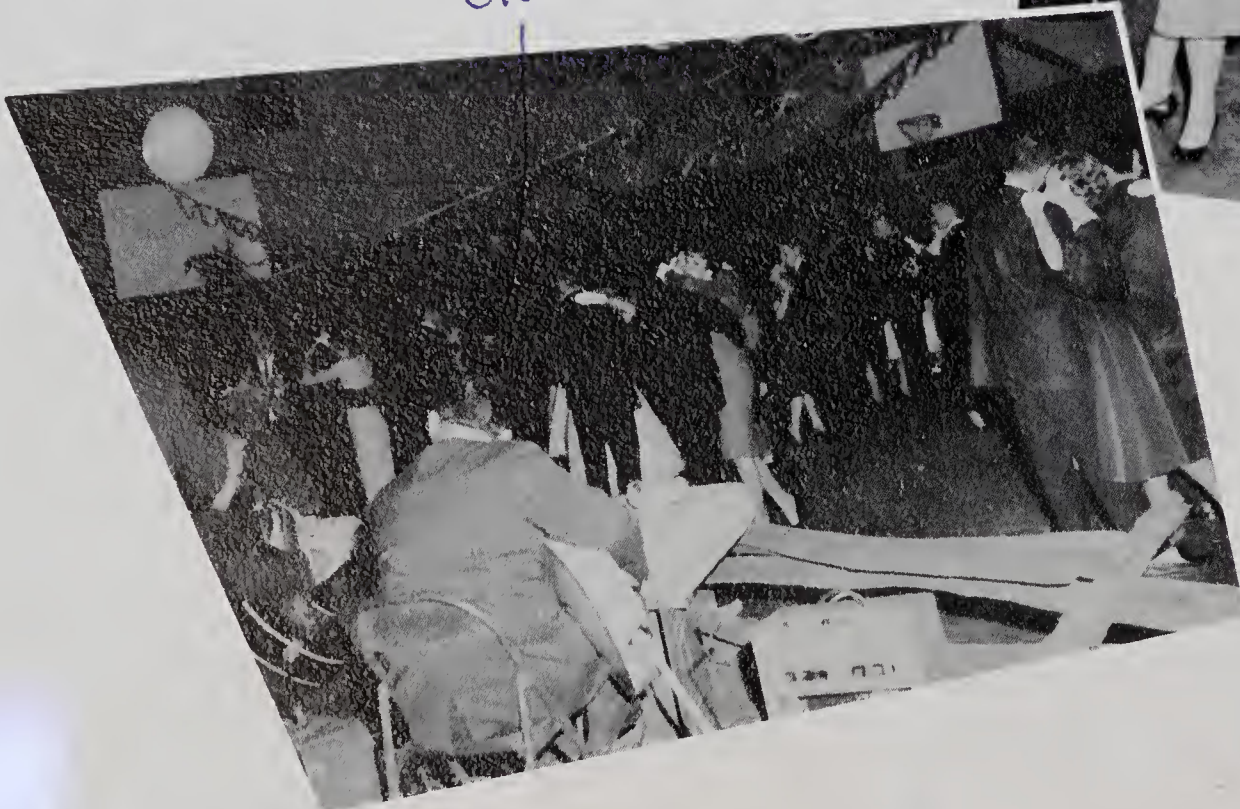
h o m e c o m i n g



Escorted by Walter Metz, Queen Molly Barker is crowned by Principal Rogers.



Eleanor



Students and alumni enjoy the Homecoming Dance, sponsored by the Student Council. Music was provided by the "Tune Toppers."



The Junior Float, "Stairway To Victory," took first place in the parade.

John



PARADE ACTIVITIES

The Boy Scouts led the 1960 Homecoming Parade.



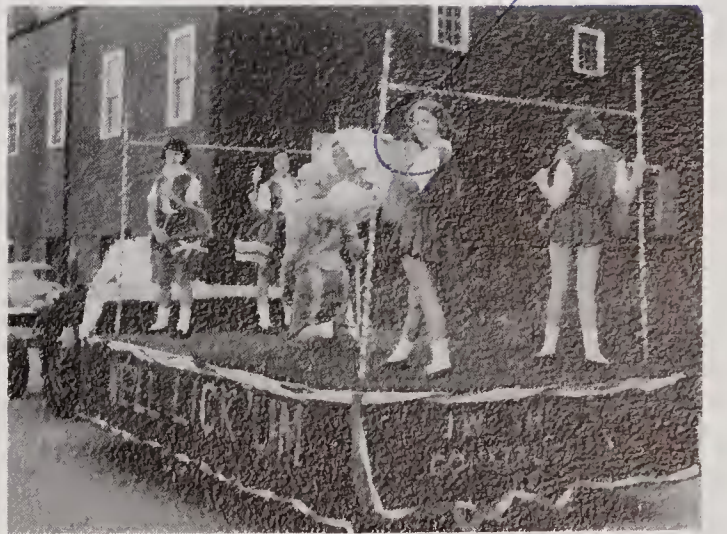
Pam

Eleanor



Tommy Stone

Chris



Senior Float
 Sophomore Float
 Freshman Float, Third Place
 Eighth Grade Float, Second Place



h
o
m
e
c
o
m
-
i
n
g
q
u
e
e
n

Molly Barker



PATSY DARNELL
Senior



MIRIAM NICKS
Junior

class attendants

TONI JOLLEY
Sophomore

BARBARA COCKERHAM
Freshman

LYNN GENTRY
Eighth Grade





JO ANN FOSTER
Senior Tri-Hi-Y



ALICE CALHOUN
Junior Garden Club



CAROLE WRIGHT
Music Club



JAMIE TRANSOU
F. H. A. Club

C
L
U
B



ANNE HOWLAND
Student Council



ANN SAGAR
Beta Club

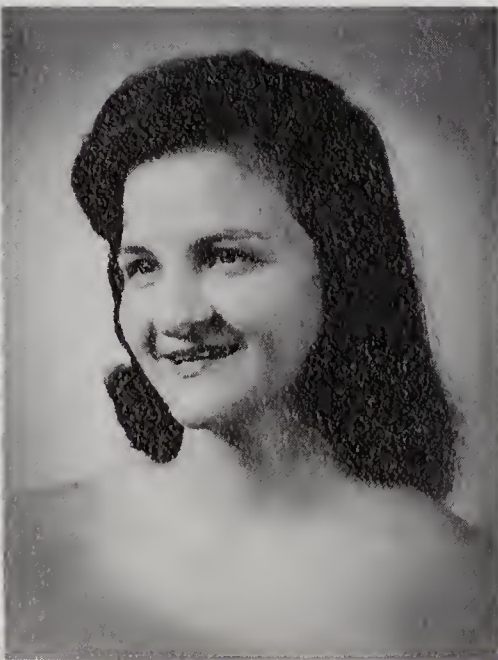
SYBIL BYRD
D. O. Club

ANN WAMPLER
D. E. Club

ANN HAYES
Alpha Tri-Hi-Y

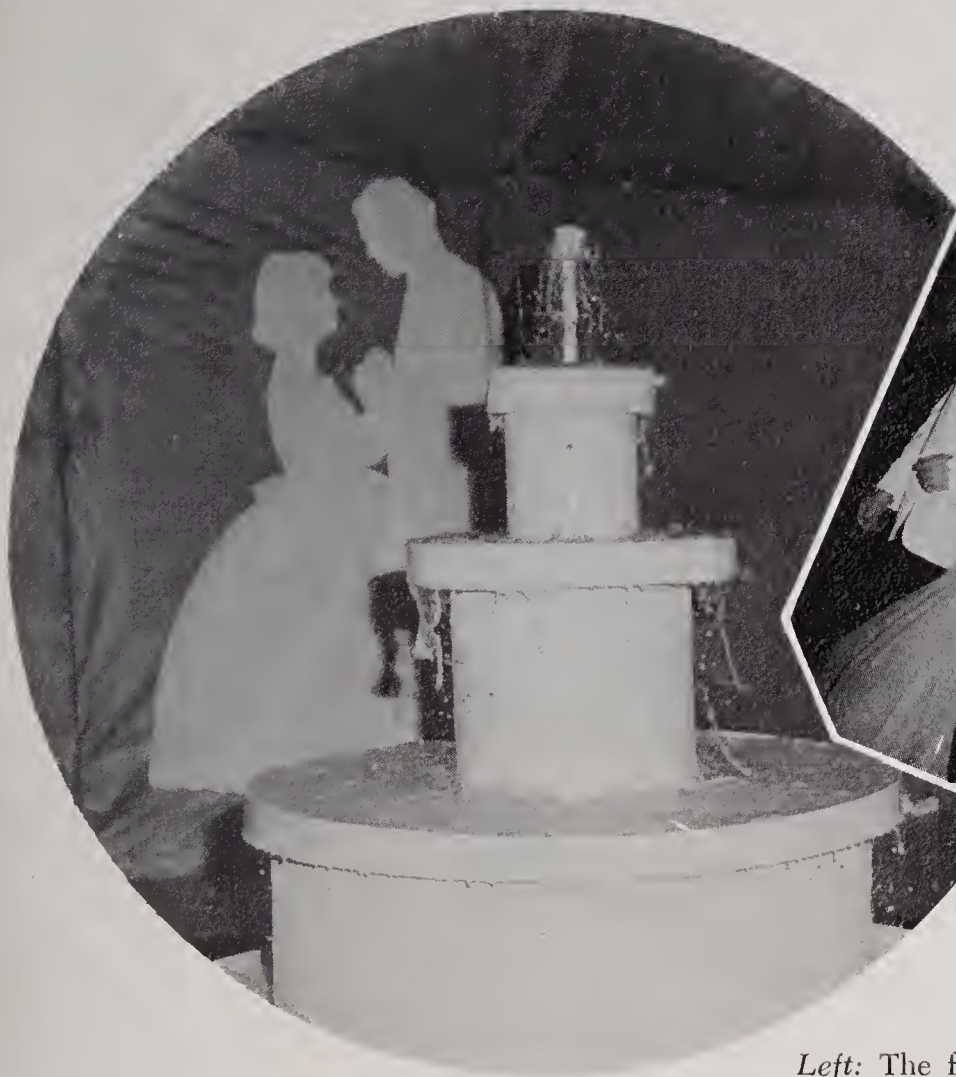
HILDA CARTER
Monogram Club

S
P
O
N
S
O
R
S





Officers of the Junior and the Senior classes lead the Grand March.



Left: The fountain was the main attraction of "Rhapsody in Blue." *Right:* Dancers enjoying the music of Baxter Potts and his orchestra.

1960 JUNIOR and SENIOR PROM



The Christmas Dance, sponsored by the Tri-Hi-Y Clubs, began the Holiday Season for E. H. S. students.



E. H. S. students enjoy the many youth centers held throughout the football and basketball seasons.



The Thanksgiving Dance, sponsored by the Student Council was a highlight of the Thanksgiving Season.

STUDENT COUNCIL	52
INTERCLUB COUNCIL	53
BETA CLUB	53
DISTRIBUTIVE EDUCATION	54
DIVERSIFIED OCCUPATIONS	54
MONOGRAM CLUB	55
DEBATING	55
BUS DRIVERS	56
OFFICE ASSISTANTS	56
LIBRARY ASSISTANTS	56
FUTURE HOMEMAKERS OF AMERICA	57
TRI-HI-Y CLUBS	57
BAND	58
GLEE CLUB	58
ELK ANTLER	59
CAPERETTES	60

a c t i v i t i e s

S
T
U
D
E
N
T
C
O
U
N
C
I
L



STEVE HOLLOWAY
President



MARGARET PRICE
Vice-President



ANNE PLASTER
Secretary



LARRY STEWART
Treasurer

*Barbara
"your representative"*

The Student Council had a very busy year during '60-'61. It sponsored a Christmas dance, presented a Thanksgiving sock hop, sponsored a White Christmas, painted the school's trash cans, and had charge of the election at the Western District N. C. Student Council Convention, of which Steve Holloway was Vice President.

Seated: Holloway, Price, Plaster, Stewart, W. Metz, parliamentarian.
Standing: Hampton, Scott, Cockerham, B. Metz, Myers, Harris, Shepherd, Collins, Mann, Long, Blackburn, Ellis, Melton, Howland, Reinhardt.

Douglas



I N T E R C L U B C O U N C I L

Seated: Price, Plaster, Stewart, Holloway, W. Metz. Row one: Wright, Mathis, Pardue, Nelson, Jennings, Cranford, Weatherman, Barker, Mann, Foster, Neaves, McNeil, Hayes. Row two: Freeman, B. Metz, Lankford, Carson.



elle

Beta Club

Row one: Hayes, Long, Wright, Sagar, Plaster, Cummings, Walters, Foster, Brinegar, Hampton. Row two: Sale, Mauldin, Pardue, Nicks, Howland, Shore, Wheeler, Cranford, Collins, Weaver, Windsor, Gregory, Scott, Dillon, J. Brown. Row three: Carson, Lankford, Lanier, Dockery, Metz, White, J. Brown, Weatherman, Freeman, S. Holloway, Bivins, Atwell, *advisor*; J. Holloway.



STEVE HOLLOWAY.....*President*
 ROBERT DILLON.....*Vice-President*
 JO ANN FOSTER.....*Secretary*
 JARRELL HOLLOWAY.....*Treasurer*
 JANE CRANFORD.....*Chaplain*

DISTRIBUTIVE EDUCATION CLUB



ALMA HARMON.....*President*
 JUDY GILMORE.....*Vice-President*
 RITA BRINEGAR.....*Secretary*
 ANN WAMPLER.....*Treasurer*

Row one: Sparks, Gilmore, Nance, Wampler, Brinegar, Teague, Mounce. *Row two:* Shore, Lyon, Calhoun, Windsor, Johnston, Anderson, Mrs. Nixon, *advisor.* *Row three:* C. Darnell, Carlton, Chipman, Bates, Nance, White, Eller, Harmon. *Row four:* A. Waddell, Sprinkle, P. Darnell, S. Waddell, Foreman.



Row one: Newman, Welborn, Blackburn, K. Spann, White. *Row two:* Mr. Eldridge, *advisor;* Holbrook, Higgins, Deatherage, G. Salley, Wooten, Caudle, Pardue, Hinson, Reynolds, Long. *Row three:* Cockerham, Jackson, Gentry, Harris, R. Spann, Taylor, Phillips, E. Salley.

O. W. WHITE.....*President*
 BUDDY CHAPPELL.....*Vice-President*
 WILLIE MAE WELBORN.....*Secretary*
 ANDREW JACKSON.....*Treasurer*

DIVERSIFIED OCCUPATION CLUB

MONOGRAM CLUB



Row one: Hayes, Wampler, K. Ellis, Pardue, Cooke, Cummings, Davis, Miller, Carter, Plaster, Stewart. Row two: Newman, Carson, Sullivan, Lankford, Salmons, Shepherd, Nelson, Swaim, Price, L. Ellis, Thompson, S. McCain, R. McCain, Poplin, Vestal, Neaves, Mounce. Row three: Lanier, Metz, Jackson, Jennings, Wiles, Harris, Weatherman, Ford, Holloway.

BARRY LANKFORD.....President
 ROBERT DILLON.....Vice-President
 ANNE PLASTER.....Secretary
 WALTER METZ.....Treasurer



DEBATING

Left to right: Dillon, Sagar, Foster, McNeil, Carson, Atwell, advisor; Weaver.





Office Assistants

Seated: Mr. Rogers, *Principal*; Lyons. *Standing:* Dobbins, LeFurgey, Blevins, Salmons, Smith, Harris, Jolley, Mauldin, Gentry, Wright, Howland.

B U S D R I V E R S

Kneeling: Royall, Adams. *Standing:* Parker, *advisor*; Snow, Slawter, Mounce.



LIBRARY ASSISTANTS

Seated: Cummings, Sebastian, *librarian*; Scott. *Standing:* Long, Gambill, Collins.

SARA MATHIS.....*President*
 FRANCES PARKS.....*Vice-President*
 CARRIE KIRKMAN.....*Secretary*
 BARBARA COCKERHAM.....*Treasurer*

Row one: J. Byrd, P. Eldridge, Hanks, Carlton, Collins, J. Parks, Hutchinson, Nixon, Isenhour, M. Mathis Huffstickler, Simmons. *Row two:* Barker, Transou, Dobbins, Mounce, Melton, Smith, Cockerham, S. Mathis, Sparks, F. Parks, Lewis, Day, Welborn, McCain. *Row three:* Harris, Lawrence, Martin, Harpe, L. Byrd, Newman, Wilmoth, Gambill, Sagar, Haynes, Walters, Cox, Alexander, Weaver, Park, Freed, Corder, Hayes, Taylor, Vestal. *Row four:* Buxton, Calloway, Bryant, Roberts, Benge, Carter, Adkins, Gentry, Southard, Wagoner, Mauldin, Cooke, Hall, Money, Chatham, A. Eldridge, Stoker.



future homemakers of america

TRI - hi - y



Row one: Meed, Newman, Jolley, Dockery, H. Harris, Dobbins, Poplin. *Row two:* Mann, E. Hayes, McNeill, Fox, Hampton, Foster, Sagar, Henderson, Bivins, Melton. *Row three:* Hutchinson, Carlton, Howland, Waring, Key, LeFurgy, Wright, Long, Calhoun, Pennell, Weaver, Sloop, Mathis, Plaster, Sale, J. Harris, M. Harris, Graham, Ratledge, Dixon, A. Harris.

SENIOR TRI-HI-Y

JO ANN FOSTER.....*President*
 HILDA CARTER.....*Vice-President*
 ANN SAGAR.....*Secretary*
 CAROLYN HAMPTON.....*Treasurer*

ALPHA TRI-HI-Y

ANNE McNEIL.....*President*
 ANNE HENDERSON.....*Vice-President*
 PEGGY BIVINS.....*Secretary*
 MARTHA MANN.....*Treasurer*



G
L
E
E
C
L
U
B

Row one: A. Hayes, E. Hayes, C. Martin, Key, Wiles, Wilmoth, Rhyme, Dockery, Transou, Dillon. Row two: Harpe, Cleary, S. Hayes, Taylor, Cockerham, Byrd, M. Mathis, Cooke, White, Dixon, Waring, McNeil, S. Mathis,

Hutchinson, A. Harris, Hampton, J. Carter, H. Harris, LeFurgey, Mann, Russell, *director*. Row three: Sprinkle, Carson, S. Martin, Dockery, P. Martin, Jennings, B. Carter, Burchette.

Band

Row one: Thompson, Aldridge, Bumgamer, Gaither, Brown. Row two: Freeman, Russell, *director*; Harrell, Carter, Ford, Martin, Frye, Cockerham, Cooke.



The Elk Antler

S t a f f

JO ANN FOSTER.....*Editor-in-Chief*
 STEVE MARTIN.....*Managing Editor*
 GEORGE CARSON.....*Business Manager*
 GARY JENNINGS.....*Art Editor*
 CAROLYN HAMPTON.....*Photography Editor*
 HARRY JENNINGS.....*Sports Editor*
 STEVE HOLLOWAY.....*Advertising Manager*
 CAROLYN WALTERS, MARTHA PARDUE.....*Circulation Managers*
 HILDA CARTER, REGGIE HARRIS.....*Social Editors*
 SUSAN DAY.....*Fashion Editor*



Clockwise: H. Jennings, Foster, Crissman, advisor; G. Jennings, R. Harris, Carson, Hampton, Dockery, Cranford, Holloway, Curtis, Mathis, J. Harris, Pardue, Day, Walters, Hayes, Martin.



Alice Elmore directed the girls through a successful season.

CAPERETTES



ANN SAGAR
Manager

Left to right: Transou, Howland, H. Harris, Foster, Barker, Cranford, Weaver, M. Harris, Wright, Plaster, Sale. *Weaver, Sagar, Leguzy et c. (future)*



FOOTBALL	62-63
BASKETBALL	64-66
Boys'	64-65
Girls'	66
SOFTBALL	67
GIRLS' TENNIS	67
BASEBALL	68
BOYS' TENNIS	69
WRESTLING	70
TRACK	70
CHEERLEADERS	71
J. V. SPORTS	74

athletics



Row one: Blackburn, Poplin, Sturgill, Ellis, J. Newman, Swaim, Holloway, Mathis Adams, Gentry, Thompson. Row two: Coach Grissom, Poplin, Mounce, Harris, Neaves, Stewart, Vestal, Freed,

Jackson, Jennings, McCain, Jordan, White, Guyer, Lanier, Metz, E. Newman, Hemric, Wiles, Coach Eldridge.

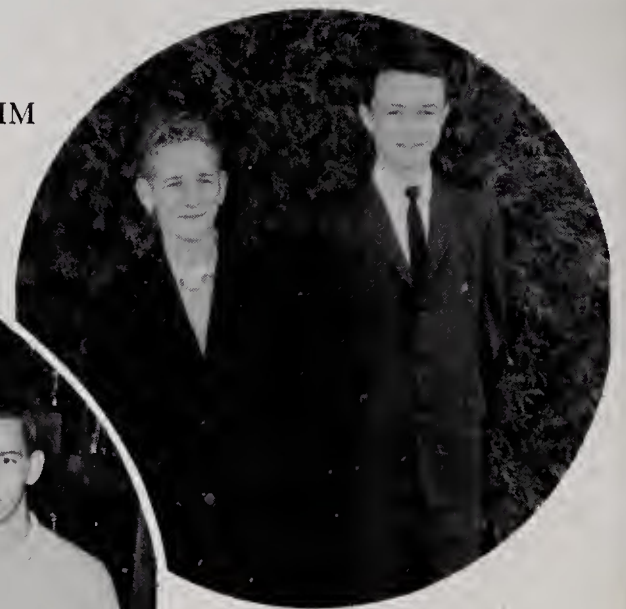


Coaches Grissom and Eldridge coached the team to many fine victories during the season.

SAMMY HALL and DANNY SWAIM
Managers



Captains for the 1960 season were Steve Holloway, Joe Newman, Harry Jennings, and Sam McCain.

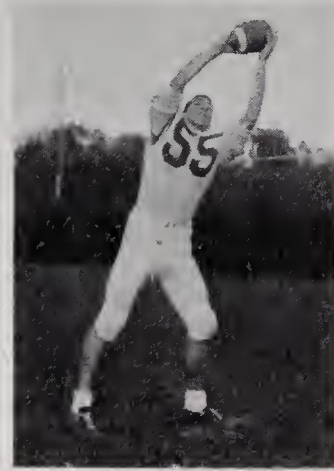


FOOTBALL

1960 SCOREBOARD

Elkin 31	North Surry	0
Elkin 9	Jonesville	6
Elkin 20	Boone	26
Elkin 13	Sparta	19
Elkin 13	Wilkes Central	31
Elkin 26	West High	20
Elkin 14	Granite Falls	13
Elkin 0	West Yadkin	7
Elkin 17	Yadkinville	13

SENIORS



STEVE HOLLOWAY
End, Fullback



JOE NEWMAN
Halfback



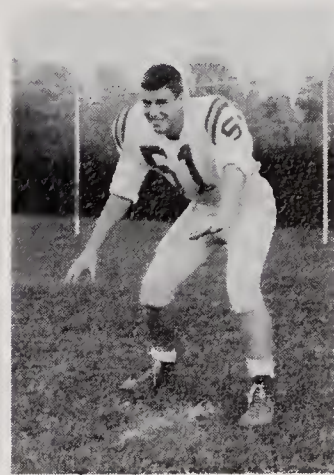
HARRY JENNINGS
Quarterback, Fullback



SAM McCOIN
End



AVERY NEAVES
Halfback



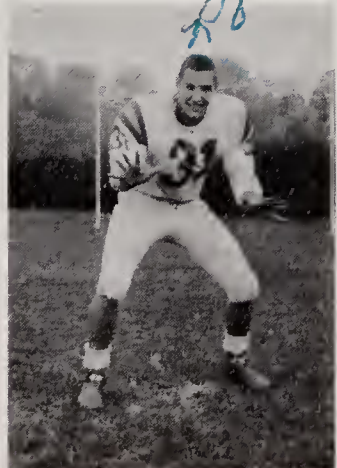
LARRY STEWART
Center



LANNY ELLIS
Halfback



O. W. WHITE
Tackle



R. O. LANIER
End



DALE JORDON
Guard

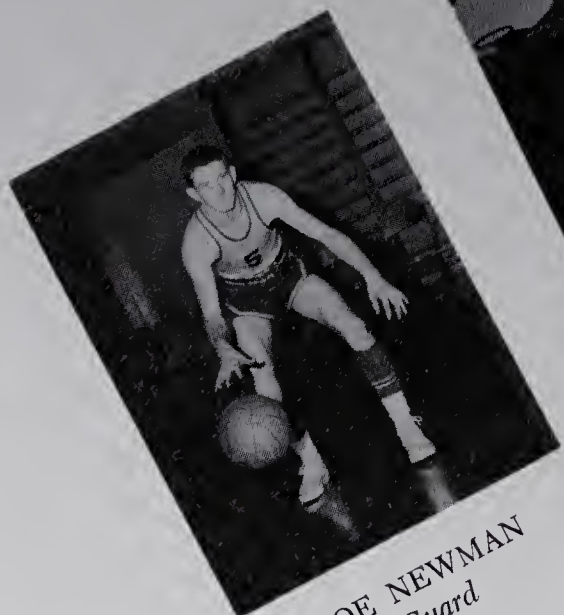


SETH HARRIS
Guard

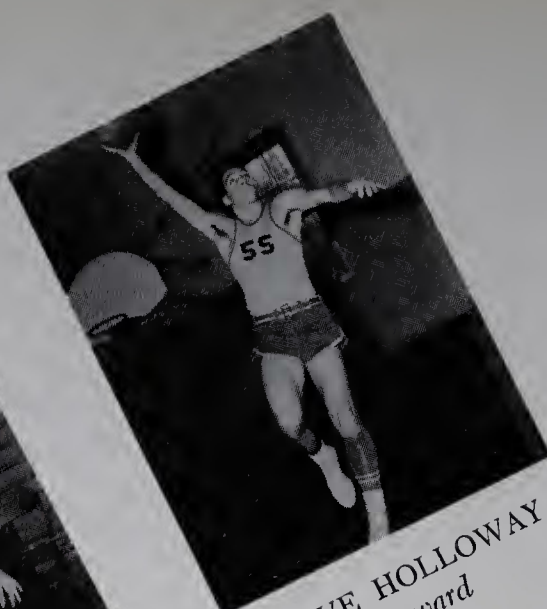


ANDREW JACKSON
Tackle

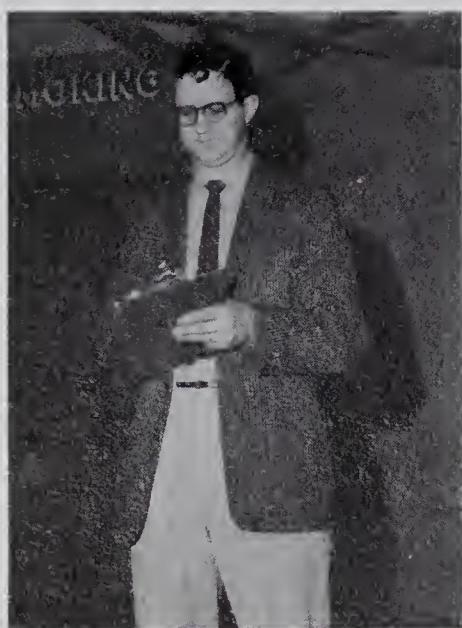
Basket



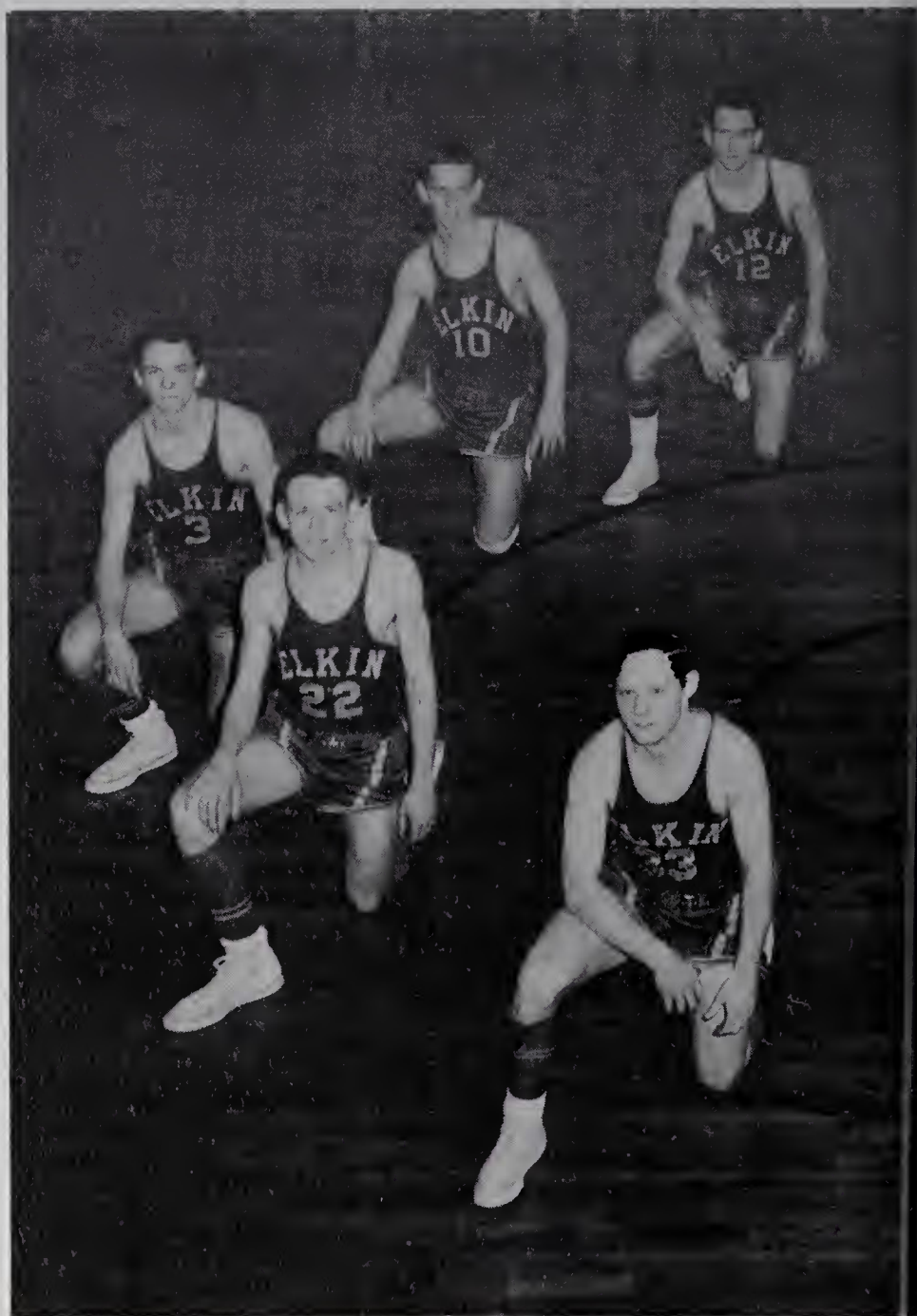
JOE NEWMAN
Guard



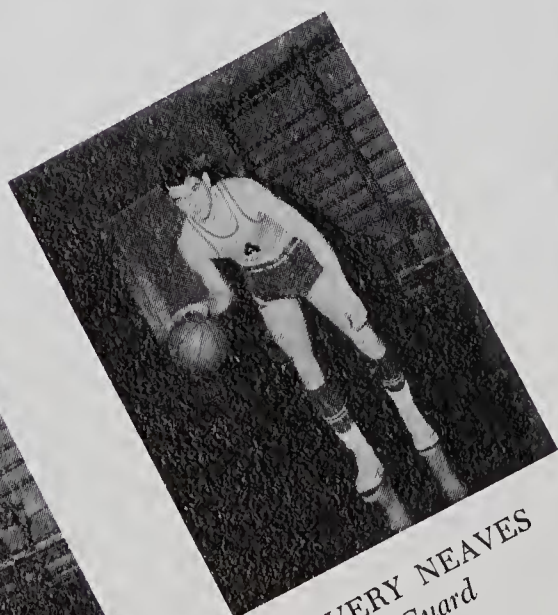
STEVE HOLLOWAY
Forward



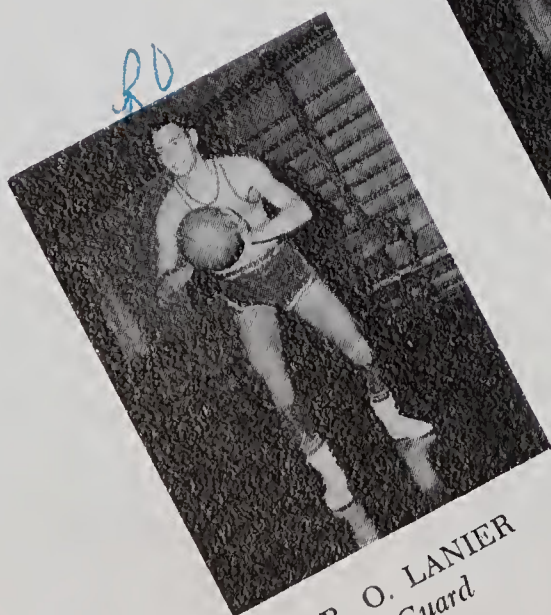
Coach Eldridge did a fine job coaching the boys during the '60-61 season.



Clockwise: Dillon, W. Metz, B. Metz, McCoin, Curtis, Holloway, Martin, Lawrence, Lanier, Carroll, Newman.

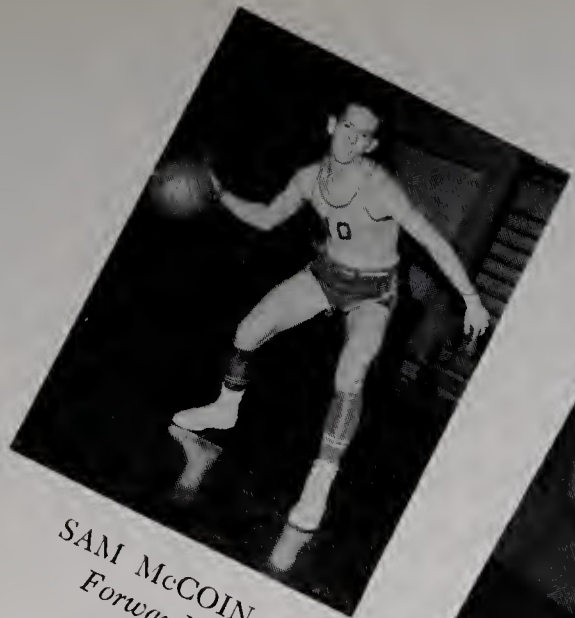


AVERY NEAVES
Guard

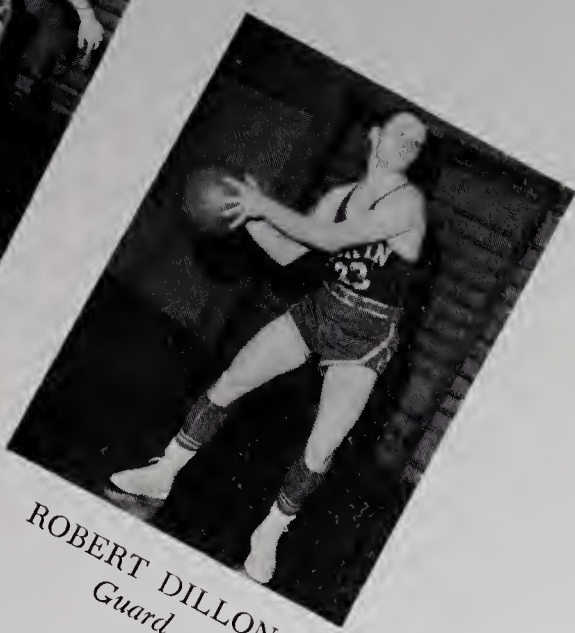


R. O. LANIER
Guard

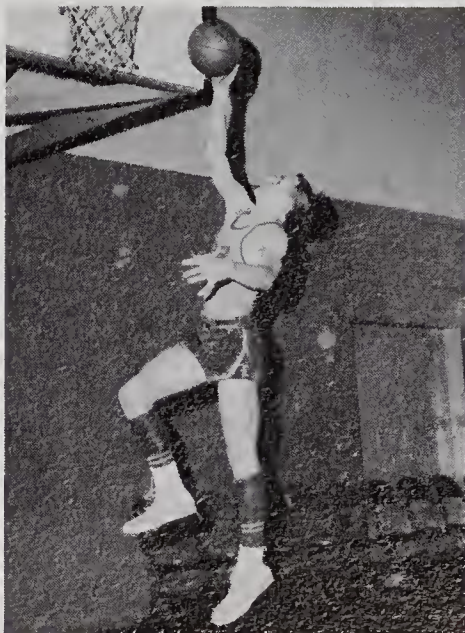
Ball



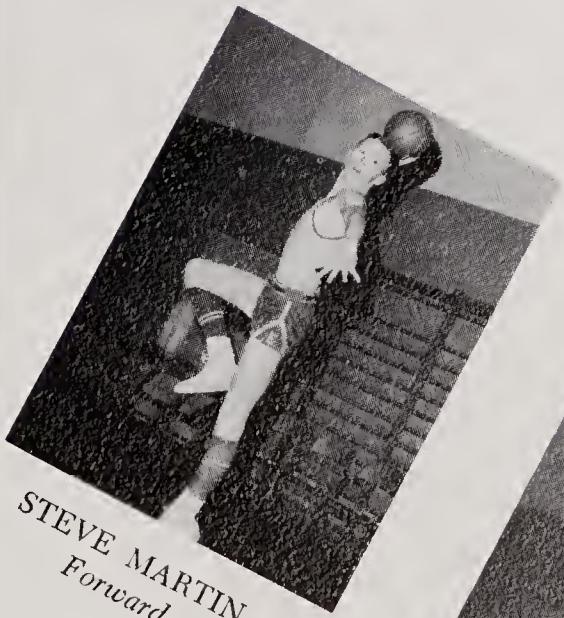
SAM McCOIN
Forward



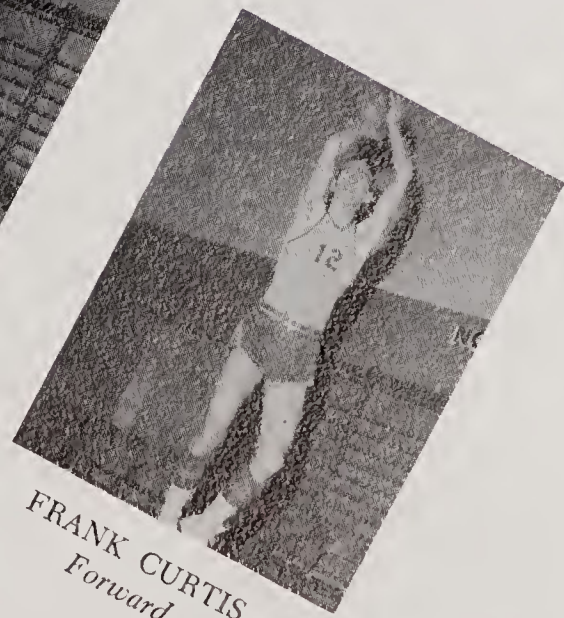
ROBERT DILLON
Guard



WALTER METZ
Captain, Guard



STEVE MARTIN
Forward



FRANK CURTIS
Forward

GIRLS' BASKETBALL



Row one: Kirkman, Sofley, Cockerham, Ford, Pardue, *Co-captain*; Dockery, Ellis, Haynes.
 Row two: A. Harris, *Manager*; Ratledge, F. Mounce, Nelson, *Co-captain*; Kilby, *Coach*; N. Mounce, Carter, Lewis, J. Harris, *Manager*.



Coach Kilby, center, discusses the scoring records with managers, Jo Harris, left, and Abbie Harris, right.



MARTHA PARDUE
Forward



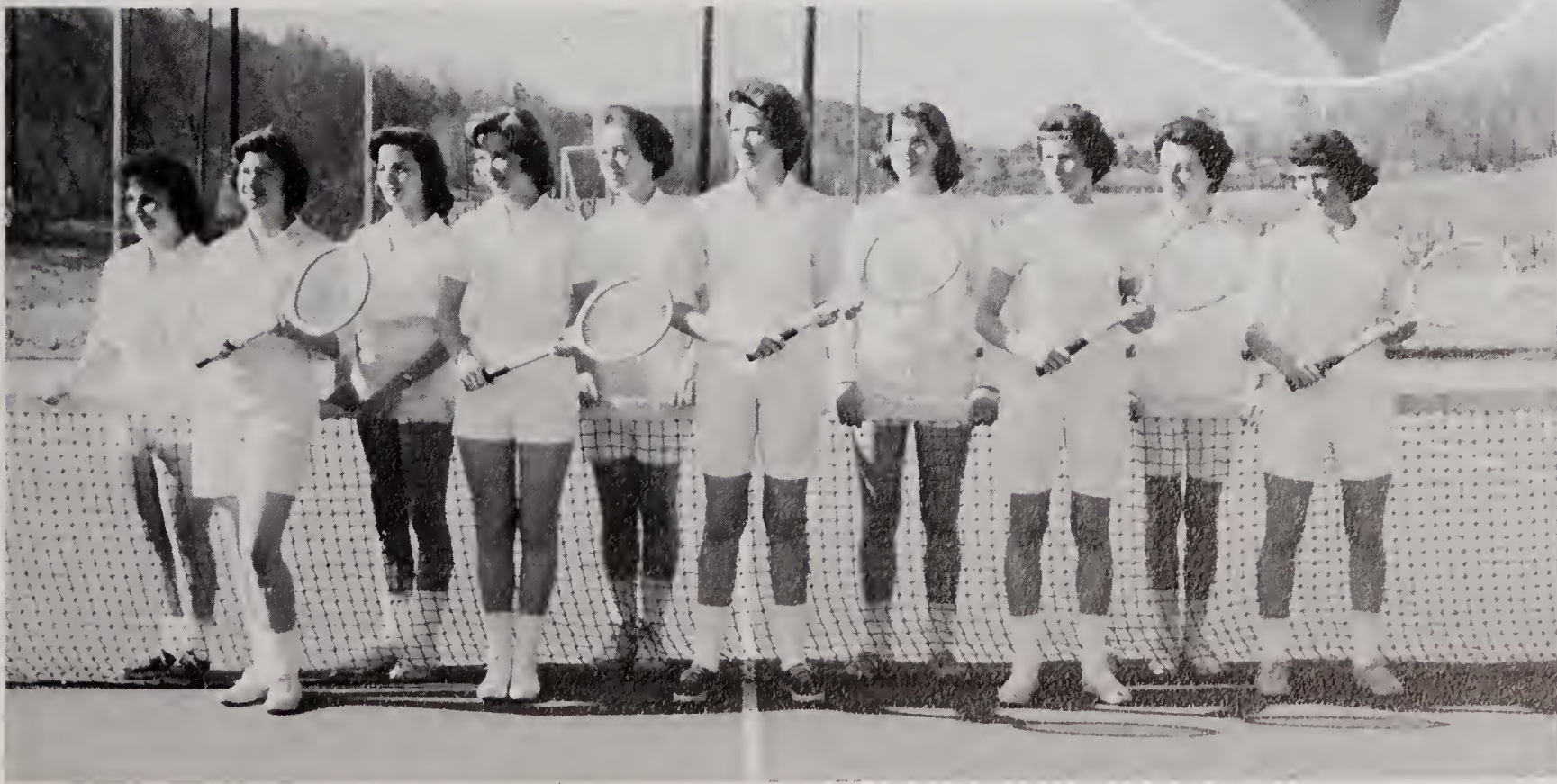
Kneeling: Ellis, Dockery, Haynes, Hayes. *Standing:* Waring, Pardue, Caudle, Nelson, Mounce, Miller, E. Hayes, Cardwell.

GIRLS' SOFTBALL

Coach Kilby did a grand job as girls' athletic coach during the past year.

GIRLS' TENNIS

Left to Right: Meed, Dockery, Wilmoth, McNeill, Waring, Nelson, Mounce, Pardue, Miller, Ellis.



B A S E B A L L



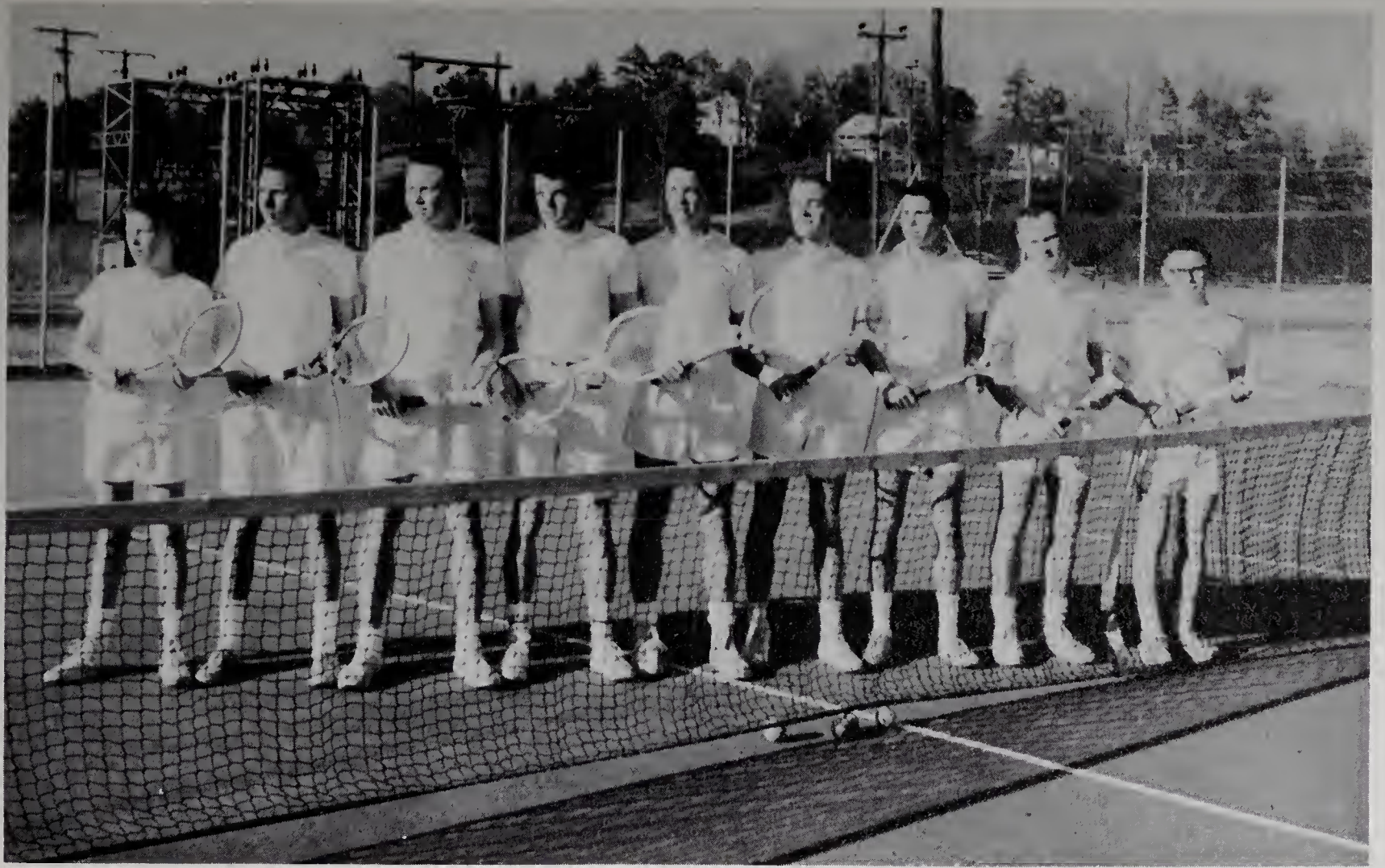
Seniors Newman, Jennings, Curtis, Stewart, McCain, Dockery, and Holloway (absent) led the baseball team through a thrilling season.

Coach Grissom again displayed his grand coaching ability as he coached the baseball team this year.



Row one: Blackburn, Cooper, Wiles, Reinhardt, R. Swaim, D. Swaim, Harris. Row two: Weatherman, Hall, R. McCain, Moncus, Newman, Royall, Manager. Row three: Coach Grissom, Hampton, Curtis, Dockery, S. McCain, Salley, Stewart, Freed, Sullivan, Manager. Absent: S. Holloway, H. Jennings.





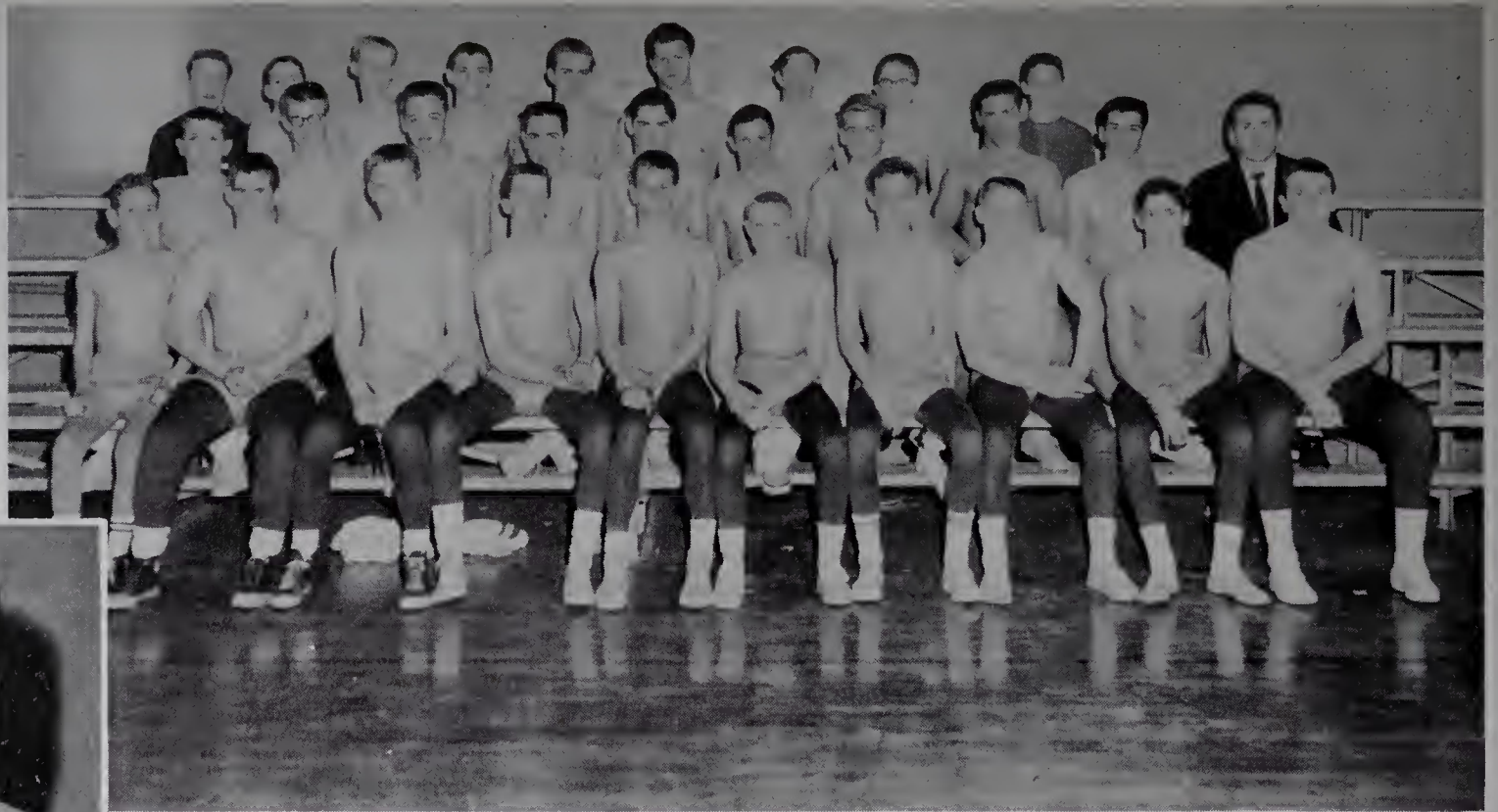
Left to Right: J. Lankford, Carson, W. Metz, Neaves, B. Metz, B. Lankford, Harris, Dillon, Myers.



Coach Alexander coached his fine team through another victorious season.

Seniors Dillon, Lankford, Neaves, Harris, Metz, and Carson led the outstanding Elkin High School tennis team as it again brought athletic prestige to our school.

Boys' Tennis



Mr. Robert Crissman coached the wrestlers this season.

Row one: Hall, Martin, Poplin, Ellis, *captain*; Thompson, Swaim, Burchette, Darnell, Greene, Jennings. Row two: Willey, Copple, Vestle, Wiles, R. Sturgill, Billings, Blazer, Blackburn, White, Coach Crissman. Row three: Francis, Shepherd, Waddell, D. Sturgill, McRae, Sprinkle, Combs, Disher, Colbert.

Wrestling

Row one: Blackburn, Cooper, Newman, Weatherman, Ellis. Row two: Coach Crissman, Reinhardt, R. McCain, Curtis, S. McCain, Mounce, Neaves, Noe.



Coach Crissman led the track team through a powerful season.



Track

CHEERLEADERS



Kneeling: Shepherd, McCoin, Caudle, Hayes, *Co-chief*; Miller, Wheeler, S. Day. *Standing:* Stoker, Cox, A. Day, *Co-chief*; Carter, Crissman, *advisor*.

ANNETTE HAYES
Co-chief

we



Above: Wheeler, Shepherd, Carter, and Day make preparations for a forecoming game. *Right:* Ann Day, *Co-chief*.





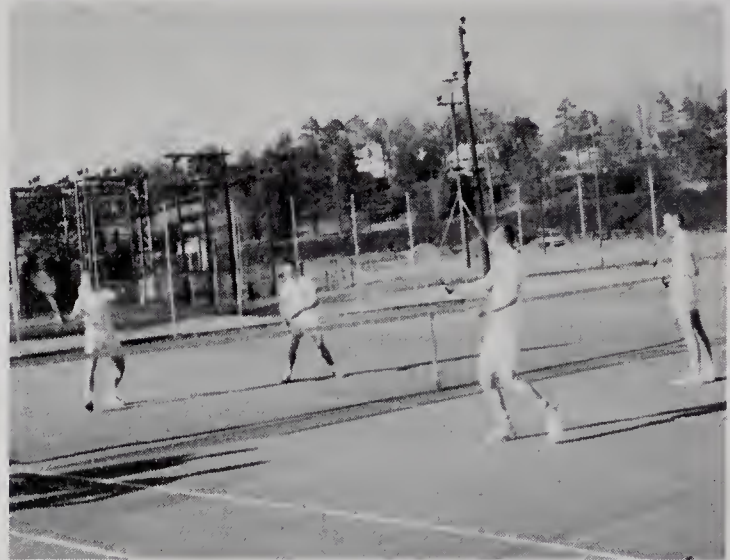
E. H. S. baseball players get into position as another opponent comes to bat.



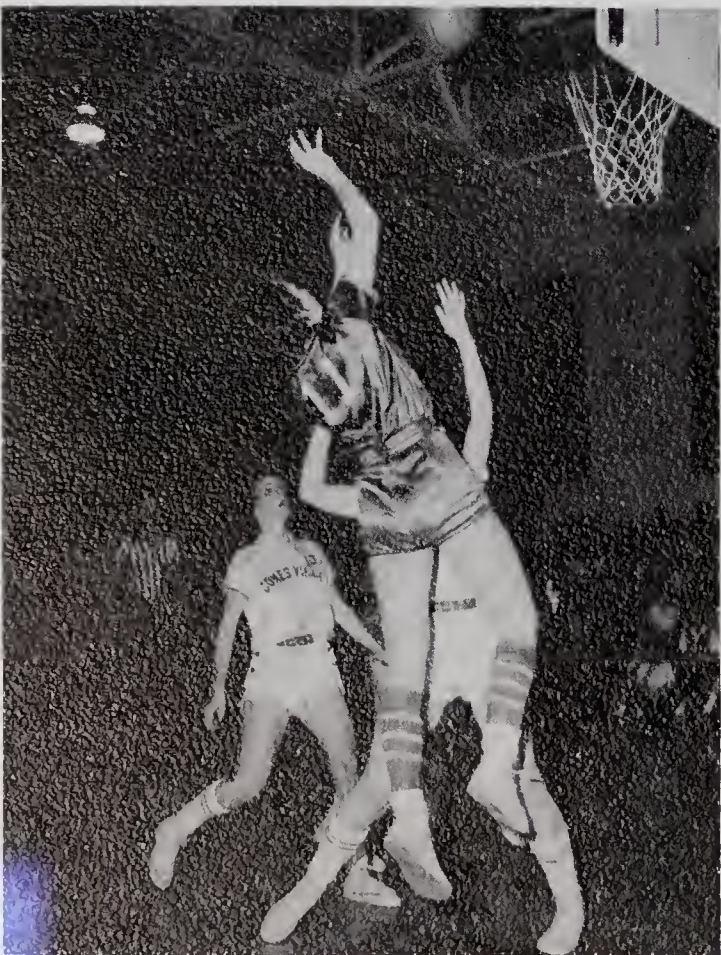
Facial expressions vary as Pardue again tries for another two points.



Ellis, Pardue, Mounce, and Nelson get ready for an exciting tennis match.



Dillon, Neaves, Metz, and Lankford begin another interesting tennis match.



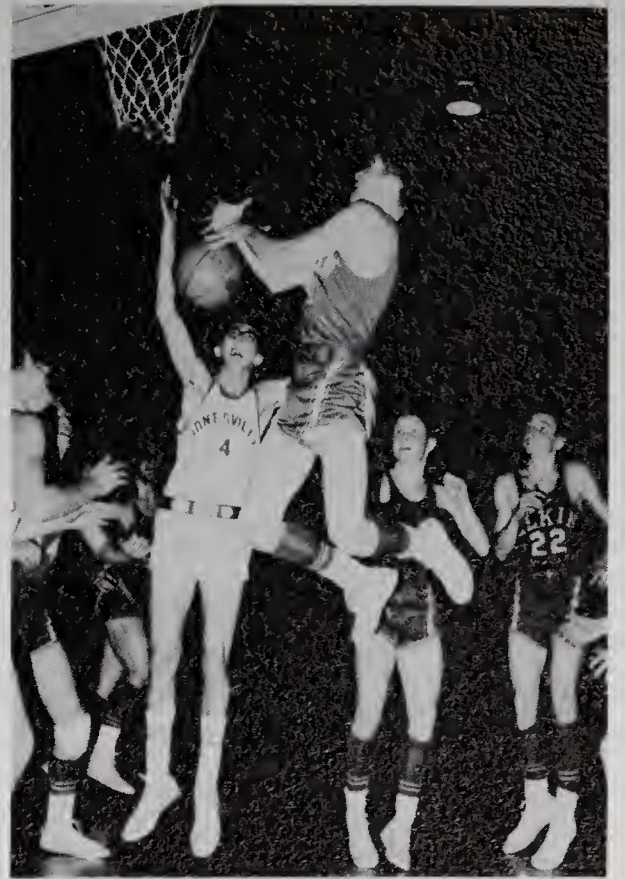
Everyone holds his breath and crosses his fingers as Ford shoots again.



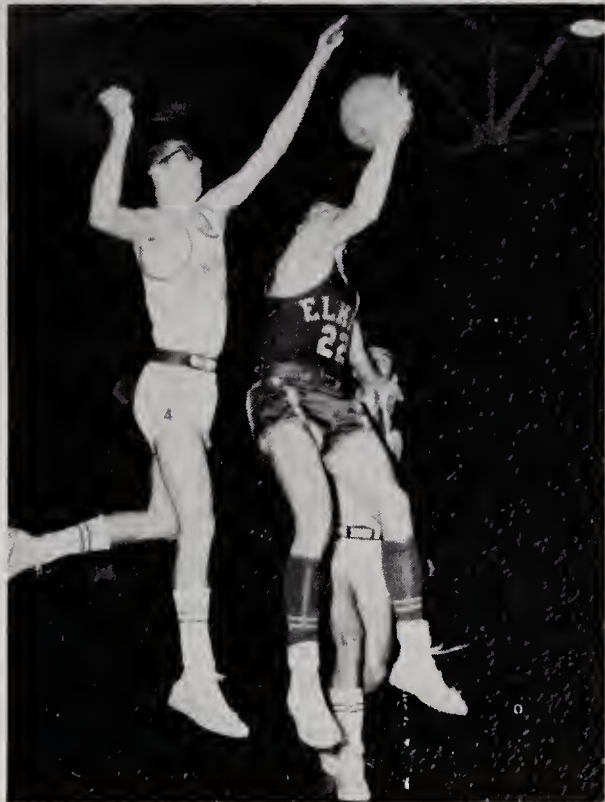
Sports



Blackburn surprises and discourages opponents as he scores a needed touchdown.



Neaves bites lip as he tries to increase Elkin's score in a close game with Jonesville.



Metz shoots again as he determines to do his share of scoring in attempt to win the tense game with rival opponents.

The whistle blows and the track stars are off!



It's really waaaa... but don't tell.
Ellis and Greene do a few practice holds before an upcoming wrestling match.



Row one: Combs, Yarboro, Dobbins, Griffin, Carpenter, Billings, Holloway, Walters. Row two: Coach Crissman, Sloop, Cockerham, Salley, C. Carter, Hall, Reece, Reinhardt, Balzer, Cooper. Row three: Nance, Carter, Noe, Dornburg, Shore, Freeman, Chatham, Hall, Swaim.

FOOTBALL

BASKETBALL



Row one: Harris, Freeman, Myers, Carpenter, Hall. Row two: Byrd, Reece, Atkinson, Lawrence, Henric. Row three: Coach Grissom, Noe.

note! whom Dr. & see beside Me!

J. V. S P O R T S



Now, let's not get in each other's way!



Hot off the press!



Music is our business—our only business!!



Chow time at last!



Daytona, here we come!

Let's get out of here! It's already 30 seconds past 3:00 o'clock!!



And the "savages" plan their attack.



Ah! Nonconformity!!



Presenting The Elk Staff



Row one: Reg Harris, Advertising Manager; Gary Jennings, Art Editor; George Carson, Business Manager. Row two: Carolyn Hampton, Photography Editor; Annette Hayes, Class Editor; Jo Ann Foster, Assistant Editor. Row three: Harry Jennings, Sports Editor; Jane Cranford, Editor-in-chief. Absent: Hilda Carter, Circulation Manager.

ADVERTISING 78-92
AUTOGRAPHS 93-96

a d v e r t i s i n g

Congratulations to the Students and Faculty
of Elkin High School

VISIT THE CHATHAM COUNTRY STORE

For All Sorts of Bargains

Blankets, Upholstery, Apparel Fabrics

Woven Rugs, Odds and Ends

Chatham Manufacturing Company



Compliments of
The Bank of Elkin
Member of the Federal Deposit Insurance Corporation

ELKIN

JONESVILLE

NORTH CAROLINA

Phone



Compliments of
**The North Wilkesboro
Coca-Cola Bottling Company, Inc.**

810-816 Elkin Road

North Wilkesboro, N. C.

Phone 32



Compliments of
**COLLINS PURE OIL
SERVICE STATION**

204 West Main Street
Elkin, N. C.

Compliments of
JEWEL BOX, INC.

"Your Friendly Jeweler"

122 West Main Street
Elkin, N. C.
Phone 835-3527

Firestone

**SPEAS HOME & AUTO
SUPPLY**

Philco

Compliments of

SURRY HARDWARE CO.

Phone 835-2940

Compliments of

**McDANIEL'S DEPARTMENT
STORE**

Elkin, N. C.

Compliments of

J. C. PENNEY CO.

Phone 835-1850 — 108 East Main St.
"ELKIN'S MOST MODERN
DEPT. STORE"
Elkin, N. C.

Compliments of

ABERNETHY'S PHARMACY

THE REXALL STORE

Compliments of

JONESVILLE ESSO SERVICE

Highway 21 at 67

Phone 835-9054

**PEPSI-COLA BOTTLING CO.
OF WINSTON-SALEM, INC.**

Elkin Branch
P. O. Box 289
Telephone 835-3434
Elkin, N. C.

Compliments of
ALEXANDER-STEVENSON

FUNERAL HOME

Phone 835-2424
Elkin, N. C.

Compliments of
MARTIN BAKE SHOP

Telephone 835-3140
Jonesville, N. C.

Compliments of
JOE E. HARRIS
GWYN INSURANCE AGENCY, INC.

Elkin, North Carolina

Compliments of
LOWE'S
OLDSMOBILE, INC.

Phone 835-2411
OLDSMOBILE & GMC TRUCKS

**BOOSE FLOWER &
GIFT SHOP**

Flowers for Every Occasion
Located on Boonville Road
Phone 835-2259

G & B ESSO
E. C. BOYLES
Wholesale and Retail

Phone 835-3607

SUPER TIRE SERVICE
FIRESTONE
"New, Silent Safti-Grip Retreading"
John Bean, Visualiner and Balancer
A. DAN HUDSPETH, Owner
689 North Bridge St.
Phone 835-2611 Elkin, N. C.

**CASH & CARRY
STORES, INC.**

WHOLESALE GROCERIES
AND NOTIONS
Phone 835-4405

ROSE & DAY, INC.

Pontiac—Lark—Vauxhall
Sales and Service
Phone 835-1831 — 835-4871
24-HOUR-WRECKER-SERVICE

Compliments of

HARRIS & WAGONER, INC.

ELKIN'S AND NORTH WILKESBORO'S
LEADING CLOTHIERS
Elkin and North Wilkesboro, N. C.

Compliments of

LAWRENCE DRY CLEANERS

Elkin, N. C.

Congratulations and Best Wishes
to the Class of 1961

**ELKIN-JONESVILLE
BUILDING AND LOAN
ASSOCIATION**

Compliments of

HOLCOMB BROTHERS

Phone 835-1251

Compliments of

CHAPPELL JEWELERS

Elkin, North Carolina

Compliments of

WESTERN AUTO

"Home Owned"

Mercury Motors
Elkin, N. C.

Jerry,
I have enjoyed going to school with you.
Thanks for being such a nice guy. Best wishes
always.

A friend,
Barbara Cockerham

Elkin Furniture Co.

Manufacturers of
Bedroom Furniture

Charlie,
I have enjoyed
all the classes with
you this year. Hope
to see a lot of you
at H.S. Good luck!
Janice

F. A. BRENDLE & SON, INC.

Fresh Meats and Groceries

Call 835-1515

for Delivery Service

Jerry,
Thanks a lot for
getting me my annual,
Best of luck!
R.D. Lamer, Jr.

J. H. BEESON

Mutual Insurance

Phone 835-2119

Elkin, N. C.

Compliments of

THOMASSON FLORIST

Dear Jerry,
I certainly have en-
joyed being in high
school with you. Thanks
for being so nice to us
"little eighth graders". Be
good this summer and
take care of those ingrown
toe nails!

ISENHOUR'S JEWELRY

Gifts That Last

Main Street

Elkin, N. C.

Always,
Hanne
Gentru

*Jerry hope
struggle hope
you and the folks
have a good year
Johnnie*

Compliments of
KLONDIKE FARM

Elkin, N. C.

Serving Elkin, Jonesville and Winston-Salem areas with
Klondike Golden Guernsey Milk. Finest Milk Produced Anywhere.

Get It at Your Favorite Store or for Home Delivery

Call 835-4232

*Jerry enjoyed
I have enjoyed with
being in the milk football
game and on the good
team with you. Good
luck through the next
years to come. "Donnie Cooper"*

**DAVIS INSURANCE
AGENCY**

FOR PROTECTION.

We're Proud of Our Claims Department

State Building, Elkin, N. C.

Phone 835-2944

X X X X X X
X X X
X X X

JERRY

Compliments of
DUN-WELL CLEANERS

"It's Done Well at

DUN-WELL"

Phone 835-4065

Jonesville, N. C.

**ELKIN LUMBER &
MFG. COMPANY**

(Incorporated)

Manufacturers and Dealers in Lumber
and Building Materials

"Everything to Build Anything"

Elkin, N. C.

Compliments of
**RUMPLE
FURNITURE COMPANY**

Where Most Folks Trade

Open Till 7:30 P.M.

Phone 835-2013

132 Market St.

GRIFFIN'S

Sporting Goods and Gifts

Elkin, N. C.

Athletic Equipment

Office and School Supplies

Compliments of
**YADKIN VALLEY
PACKERS, INC.**

Processors of

"Piedmont's Best"

Compliments of

Belk - Doughton Company

"REMEMBER YOU SAVE AT BELK'S"

Elkin, North Carolina

CAROLINA BLOOMER COMPANY

Phone 835-4651

209 East Main St.

Elkin, N. C.

Manufacturer of

WOMEN'S AND CHILDREN'S

FINE QUALITY LINGERIE

Compliments of

ELK PHARMACY

Luke and Dwayne Urwin

Phone 835-2621

Elkin, N. C.

Always at Your Service

*Jerry, finally!
Well, be through.
made it through a miserable
Latin! That's a Latin II.
for me. Now found like
Doesn't that sound like
fun. It's been a real good
year. Yours a real good
kid.
Rosemary*

WALL'S JEWELERS

Watch and Jewelry Repairing

Elkin, Mt. Airy, North Wilkesboro,

North Carolina

I have enjoyed the pleasure of being in school with you. I had a great time next year at school. I enjoyed the football team.

WHITE BROTHERS

Blocks and Building Materials
Well, Road, and Drain Tile
Ruscoe and Steel Windows
Plumbing Supplies
Phone 835-3025
Boonville Highway

**MATHIS-PARDUE
FURNITURE COMPANY**

Hotpoint, TV, and Appliances
Guaranteed Best Quality
at Lower Prices
Elkin, N. C.

Compliments of
**BLACKWELDER
FURNITURE CO.**
The Home of Quality Furniture
For Less Money
Open til 7:30 P.M.
Jonesville - Phone 835-1424

**J. W. SHEPHERD
CONSTRUCTION, INC.**

Phone 835-2531
Commercial & Residential Building
FHA, VA & Conventional Loans
"We Stress Quality"

ELKIN BUSINESS COLLEGE

"The Gateway to Business Success"
Complete Courses in
Individual Subjects
Including IBM Card Punch Machines
112 Church Street
State Building
Elkin, North Carolina

**YADKIN
FINANCE CORPORATION**

"Home Company For
Home Folks"
Elkin, N. C.

F. W. CHEVROLET, INC.

Elkin, N. C.
Sales and Super Service
Wrecker Service
Phone 835-2165

VESTAL'S CASH GROCERY

Western Meats
Fresh Vegetables Delivered Daily
For Thurs., Fri., Sat.
Delivery Call

DOBBINS OIL CO.

Distributor of Pure Oil Products

Phone 835-3860

Elkin, N. C.

Compliments of

**LUCY GRAY'S
BEAUTY SHOPPE**

Phone 835-4061

Elkin, N. C.

**ROYALL DRUG COMPANY,
INC.**

TEACHERS AND STUDENTS

HEADQUARTERS

Elkin, N. C.

**WINEBARGER MOTOR
COMPANY**

FORD FALCON MERCURY

Service and Sales

Phone 835-2861 Elkin, N. C.

*Jerry, are a very nice
boy. I like you. Lots of luck
in the coming year
at E.H.S. Have a good
summer and a lot
of fun. God Bless you.
Makala
"Halek"*

Compliments of

Spainhour's

A MODERN DEPARTMENT STORE

Elkin, N. C.

*Jerry
It has been
nice being in
school with you again
Even since kindergarten
I've been one step behind you.
One day I'll catch up with
you!*

REEVES THEATER

Movies Are Your Best

Entertainment

Elkin, N. C.

Phone 835-4705

Chris

ROBERT'S MEN SHOP

The Place for Something New
and Something Different

SPECIALTIES

Form Fit Shirts

Pants—Cat, Ivy League, and Skeet

Sport Coats—Jackets

Cat Hats

Compliments of

WHITE SWAN LAUNDRY

Dry Cleaning

*Jerry
I have truly enjoyed
telling jokes and joking with
you.
Gary*

SPRINKLE'S SERVICE

Roger W. Sprinkle, Proprietor

Tire Recapping—Sinclair Products,

Goodyear Tires and Batteries

302 East Main Street

Phone 835-1996 — Elkin, N. C.

Compliments of

HOTEL ELKIN

North Bridge St.

Elkin, N. C.

Phone 835-3623

Compliments of

5 & 10 BEN FRANKLIN 5 & 10

HOME OF ONWARD

SCHOOL SUPPLIES

Elkin, North Carolina

Compliments of

HALL-KNOTT &

EDWARDS

117 East Main St.

Elkin, N. C.

Compliments of

ROYALL-COX AGENCY,

INC.

109 North Bridge Street

Elkin, N. C.

*Jerry, has
been a friendship
with Royall-Cox Agency
other. I've enjoyed
many of the services.
Thank you,
Gary
(in blue)
Just kidding*

Jerry:
It's sure been nice to see you around to see you still be in the rates (I'm going)

**BRENDLE
FEED, SEED & HARDWARE**

Evinrude Motors
Lone Star and Glasspar Boats

E. H. Swaim
next year (I'll be in the 8th grade though)

SWAIM BROS. GULF SERVICE

Gulf Gasoline - Oils - Greases

215 No. Bridge St.

Elkin, N. C.

Jackie

Compliments of

VETERAN SHEET METAL CO.

Phone 835-4703

Elkin, N. C.

Compliments of

BON-TON GRILL

East Main Street

Elkin, N. C.

Compliments of

THE ELKIN TRIBUNE

"YOUR HOME NEWSPAPER"

Compliments

of

TRIPLETT USED CARS

West Main Street

Elkin, N. C.

Compliments of

**NEWMAN BROTHERS
WELL DRILLING COMPANY**

Elkin, N. C.

Phone 835-4914

DAIRY BAR AND

RESTAURANT

Good Home Cooked Meals

Church Street

Elkin, N. C.

*Dear Jerry,
whee at time
goes on it seems
that you takes get everyone
face gets uglier, and you
personality gets more morbid.
all the same you are still the
same great guy, even if you are brilliant
in biology. I wish you happiness and love
throughout life.
Love
Jack
Laughton & Eleanor*

Compliments of

JOE G. BIVENS

INSURANCE AGENCY

Compliments of

MITCHELL'S FIVE & TEN

Jonesville, N. C.

Compliments of

TRI-COUNTY CURB MARKET

North Bridge St.
Elkin, N. C.

Compliments of

BUTNER MOTOR SALES

North Bridge St.
Elkin, N. C.

ROY'S RESTAURANT

"We Specialize in Steaks,
Seafoods, and Home-Made Desserts"

1111 North Bridge St.
Elkin, N. C.

*Jerry,
our friendship has been
a great experience.
all that more can I say?
RBA*

Compliments of

SURRY TRACTOR COMPANY

North Bridge Street
Elkin, N. C.

**COLONIAL DISTRIBUTORS,
INC.**

Gulf Oil Produces
Fuel Oil Kerosene
Elkin & Jonesville
Phone 835-4919

JONESVILLE DRUGS

Walgreen Agency
JONESVILLE SHOPPING CENTER
Phone 835-3024

ELECTRIC
COMFORT
HEATING



CLEAN
THRIFTY
TROUBLE-FREE
SAFE

DRAFT-FREE COMFORT

**Installs in baseboards,
slab floors or ceilings**

Ask for details from your
heating specialist at

DUKE
POWER COMPANY

Compliments of
ROSE'S 5, 10, & 25c STORE

SCHOOL SUPPLIES

Main Street Phone 835-2026
Elkin

Compliments of

COCKERHAM BARBER SHOP

Phone 835-3719

Compliments of

ED SNYDER'S

Philco-RCA

Phone 835-2822

Compliments of

MORRISON'S FLOWER SHOP

"Flowers for All Occasions"

FLORISTS' TELEGRAPH DELIVERY

Phone 835-4856

Compliments of

KENNEDY AUTO SUPPLY

Auto Accessories

Records

Phone 835-4547

Compliments of

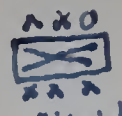
ROGERS SHOE SHOP

Main Street

Elkin, N. C.

Autographs

Dear Fellow Mad Reader,
I have enjoyed all
the wonderful times we have
spent together this year & have
thought I am moving to Danville.
I still hope that you will be one
of my best friends in the future you every want
to write me in the future my address will
be Tommy Shore, 240 West Main St., Danville, Va. I
doubt if you will write unless I get killed
or subscribe to "Mad" again.



"Hold the funeral, fellas!
My pants are slipping"

In closing I would like to wish you all
the success in the world and I hope you never
run out of movie. I am sure if you keep reading
'Mad' Alfred E. Newman will look over your shoulder.



Your mad friend,
Thomas H. Shore III.

P.S.
I hope you will
visit me this summer.

Wynne Dillon.
It has really been fun to
have you in my room.

Pike Sullivan

Johnny Dockery

Mary Jennings

Frank Curtis

Edgar Royall

Floyd VanAntwerp, Jr

Ann U. Sagar

Carolyn Walters

Susan Taylor

Joe Bivins

Hilda Day Carter

Walt Metz

Sue Ann Pennell

Jo Ann Foster

Harry Jennings

Betty Ann Sloop

Carolyn Hampton

Betty Jane Weaver

Stephen Martin

Jerry Blackburn

Molly Barker

Eleanor Weaver

Alice Calhoun

Lanny Ellis

Martha Pardue

Jerrell Hollaway

Carole Knight

Annette Hayes

Steve M. Freeman

Sara Mathis

Jane Cranford

Judy Harris

Anne Howland

Mike Carroll

Linda Scott

Bat Lyon

Betty Sprinkle

Wayne Wilmoth

Joe Newman

Bill Chappell

Barry Landford

Young Carpenter

Ann Wampler Patsy Darnell

Robert Tillon

Linda Carlton

Maurice Bungamer

John Ford

Alma Harmon

Fatie

Billy Phillips

Pita Brinegar

Ronnie Long

Frank

Gary Dally

Reggie Harris

George Carson

Patsy White

R.O. Lanier, Jr.

Ray Henson

Larry Stewart

Ann Haddell

Gabriella Parks

Sybil Byrd

Leth Harris

Tommy Chipman

Dale Jordan

Carol Darnell

Steve M. Holloway

Betty Kimber

Sam Waddell

Anita Shore

Andrew Jackson

Jackie Bates
Willie Mae Wilbur

Genevieve Jaque

Margaret Sparks

Vivian Johnston

Bonny Shore

W. Arney Weaver II

AUTOGRAPHS

Dear Charles Gould,

Another year has rolled past
and a school year has almost ended.
Thanks so much for your friendship
this year. You're a great guy and I
hope to beat you in tennis this summer
or in the future. Thanks for your
help in Biology and everything else.

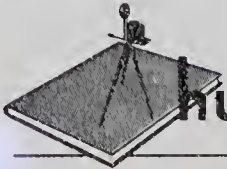
Please forget the statement about hatred.

OK?! Good Luck and God Bless you.

P.S. Have a nice summer!

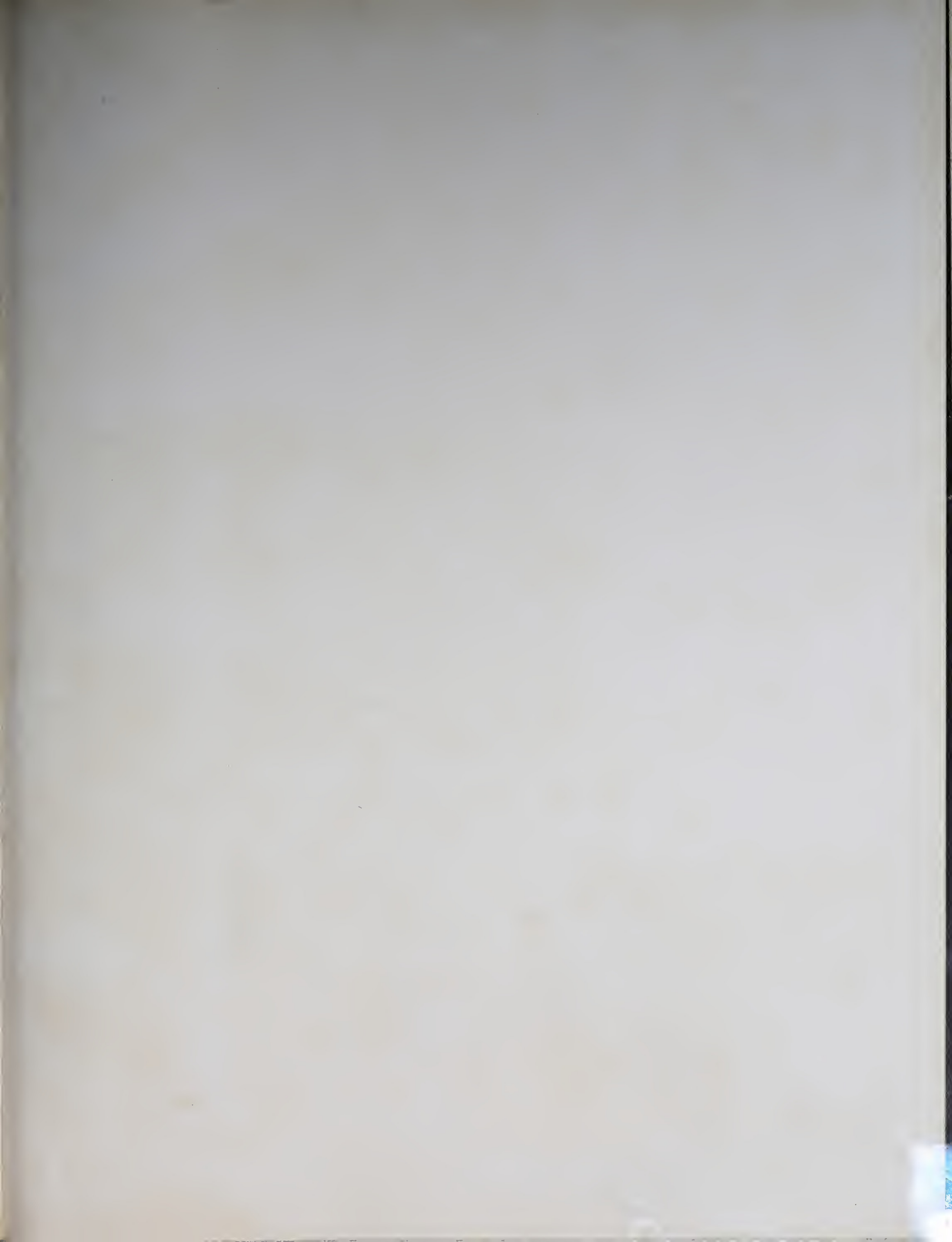
Love,
Janice (Carolyn Hayes)
(you)

A Product of



Hunter Publishing
COMPANY

333 INDIANA AVENUE
WINSTON-SALEM, N.C.







HUNTER
PUBLISHING
COMPANY
WILMINGTON, N.C.